

# DELAWARE VITAL STATISTICS ANNUAL REPORT POPULATION, 2016



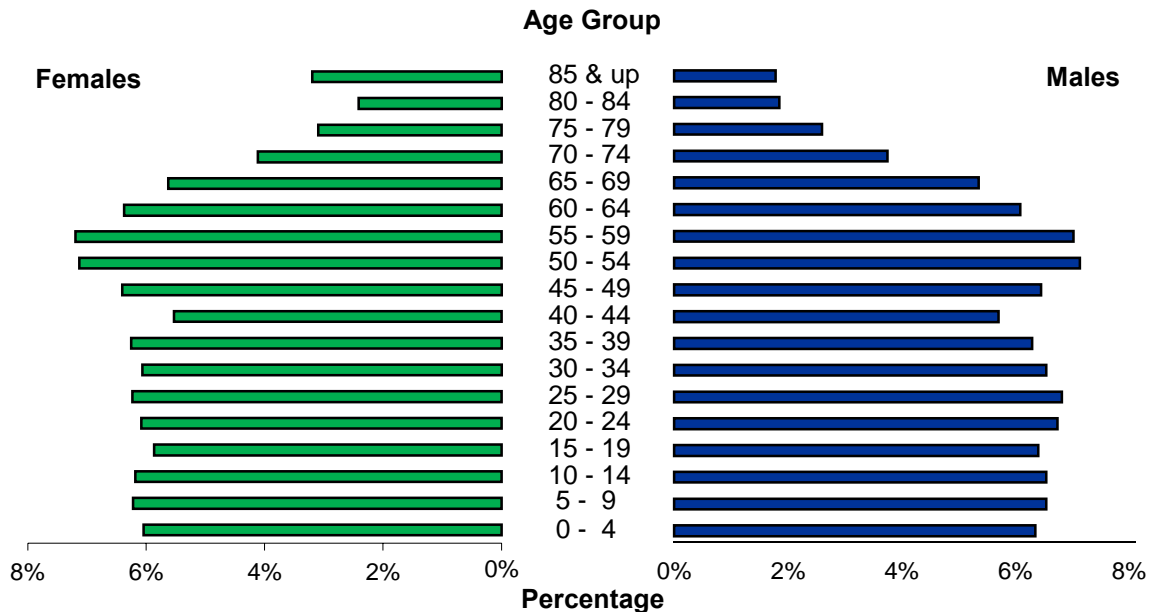
*Suggested Citation:*

Delaware Health Statistics Center. *Delaware Vital Statistics Annual Report, 2016.*  
Delaware Health and Social Services, Division of Public Health: 2018.

## POPULATION

In 2016, just over 51 percent of Delaware's population was female. Females made up a greater proportion of the older age groups, which reflects the longer female life expectancy. Delaware females born in 2016 can expect to live an average of 81.8 years versus males who could expect to live 75.7 years.

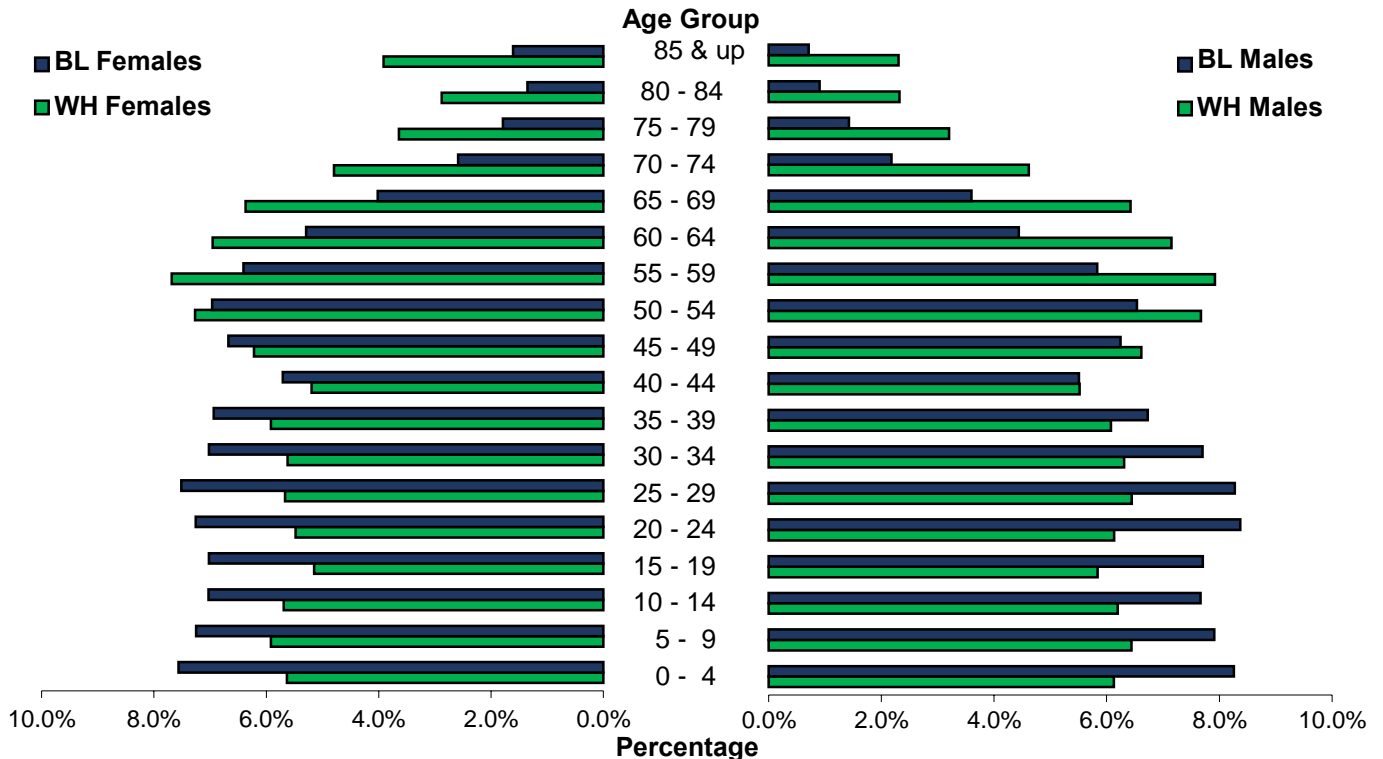
**Figure 3. Population by Gender and Age, Delaware, 2016**



Source: Delaware Department of Health and Social Services, Division of Public Health, Delaware Health Statistics Center

When the population was broken down by race, the highest proportion of females in the older age groups appeared in the white population. However, both black males and females had a greater percentage of their population in the 0-39 year age range than white males and females. In the 50 and above age range for both males and females, whites made up a greater proportion of the population.

**Figure 4. Population by Gender and Race, Delaware, 2016**



Source: Delaware Department of Health and Social Services, Division of Public Health, Delaware Health Statistics Center

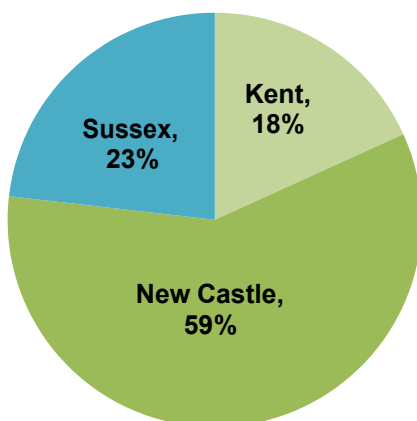
## POPULATION

Delaware's three counties continued their increasing population trend, though they grew at different rates. Between 2000 and 2016, county populations grew annually by 2.3 percent for Kent, 0.7 percent for New Castle, and 2.5 percent for Sussex. Delaware's statewide increase was 1.3 percent.

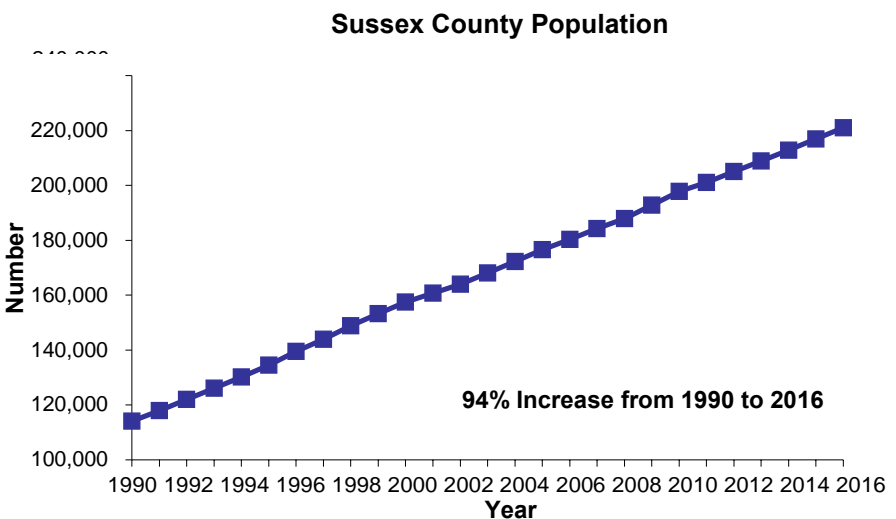
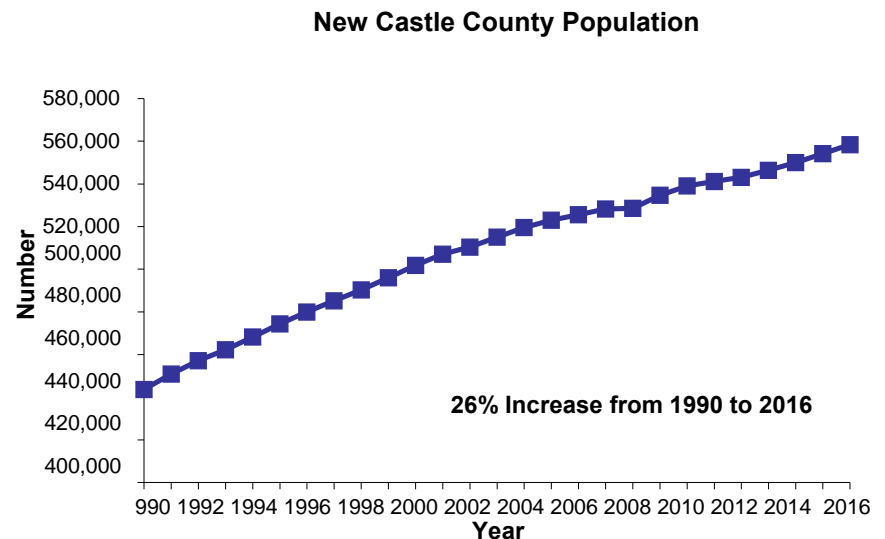
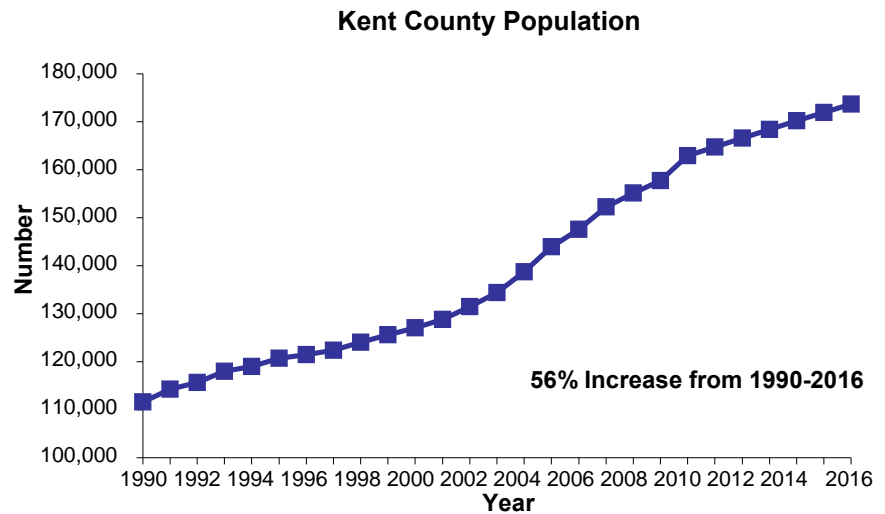
In 2016, just over half of Delaware's 65 and older population resided in New Castle County. However, residents 65 and older represented a much larger proportion of the Sussex County population, where one in four residents was 65 or older, versus New Castle and Kent counties, where approximately one in seven residents was 65 or older.

Over half of Delaware's total population resides in New Castle County.

**Figure 6. Percent of Population by County, Delaware, 2016**



**Figure 5. Delaware Resident Population by County, 1990-2016**



Source: Delaware Department of Health and Social Services, Division of Public Health, Health Statistics Center

Source: Delaware Department of Health and Social Services, Division of Public Health, Health Statistics Center

**TABLE A-1. PERCENT CHANGE IN POPULATION BY SEX, COUNTY, CITY OF DOVER, CITY OF NEWARK, AND CITY OF WILMINGTON, DELAWARE, 1970-2020**

Area/ Sex	1970	1980	% Change 1970-1980	1990	% Change 1980-1990	2000	% Change 1990-2000	2010	% Change 2000-2010	2020*	% Change 2010-2020	% Change 2000-2020
<b>Delaware</b>	548,104	594,338	8.4	666,168	12.1	786,393	18.0	899,773	14.4	952,986	5.9	21.2
Male	267,332	286,599	7.2	322,966	12.7	381,690	18.2	437,346	14.6	463,657	6.0	21.5
Female	280,772	307,739	9.6	343,202	11.5	404,703	17.9	462,427	14.3	489,329	5.8	20.9
<b>Kent</b>	81,892	98,219	19.9	110,993	13.0	127,230	14.6	162,916	28.0	173,668	6.6	36.5
Male	41,337	48,254	16.7	54,300	12.5	61,325	12.9	78,394	27.8	83,539	6.6	36.2
Female	40,555	49,965	23.2	56,693	13.5	65,905	16.2	84,522	28.2	90,129	6.6	36.8
<b>Dover</b>	17,488	23,512	34.4	27,630	17.5	32,135	16.3	36,063	12.2	40,475	12.2	26.0
Male	8,319	11,695	40.6	13,408	14.6	15,114	12.7	16,798	11.1	18,606	10.8	23.1
Female	9,169	11,817	28.9	14,222	20.4	17,021	19.7	19,266	13.2	21,869	13.5	28.5
<b>New Castle</b>	385,856	398,115	3.2	441,946	11.0	501,846	13.6	538,987	7.4	558,345	3.6	11.3
Male	187,124	191,176	2.2	213,869	11.9	243,587	13.9	262,091	7.6	271,644	3.6	11.5
Female	198,732	206,939	4.1	228,077	10.2	258,259	13.2	276,896	7.2	286,701	3.5	11.0
<b>Newark</b>	20,757	25,247	21.6	26,463	4.8	28,457	7.5	31,465	10.6	34,790	10.6	22.3
Male	10,242	11,993	17.1	12,408	3.5	13,085	5.5	14,695	12.3	16,251	10.6	24.2
Female	10,515	13,254	26.0	14,055	6.0	15,372	9.4	16,770	9.1	18,539	10.5	20.6
<b>Wilmington</b>	80,386	70,195	-12.7	71,529	1.9	72,730	1.7	70,839	-2.6	70,119	-1.0	-3.6
Male	36,968	31,458	-14.9	33,249	5.7	34,759	4.5	34,568	-0.5	34,540	-0.1	-0.6
Female	43,418	38,737	-10.8	38,280	-1.2	37,971	-0.8	36,271	-4.5	35,579	-1.9	-6.3
<b>Sussex</b>	80,356	98,004	22.0	113,229	15.5	157,317	38.9	197,870	25.8	220,973	11.7	40.5
Male	38,871	47,169	21.3	54,797	16.2	76,778	40.1	96,861	26.2	108,474	12.0	41.3
Female	41,485	50,835	22.5	58,432	14.9	80,539	37.8	101,009	25.4	112,499	11.4	39.7

Note:

\*Numbers for this year are projections.

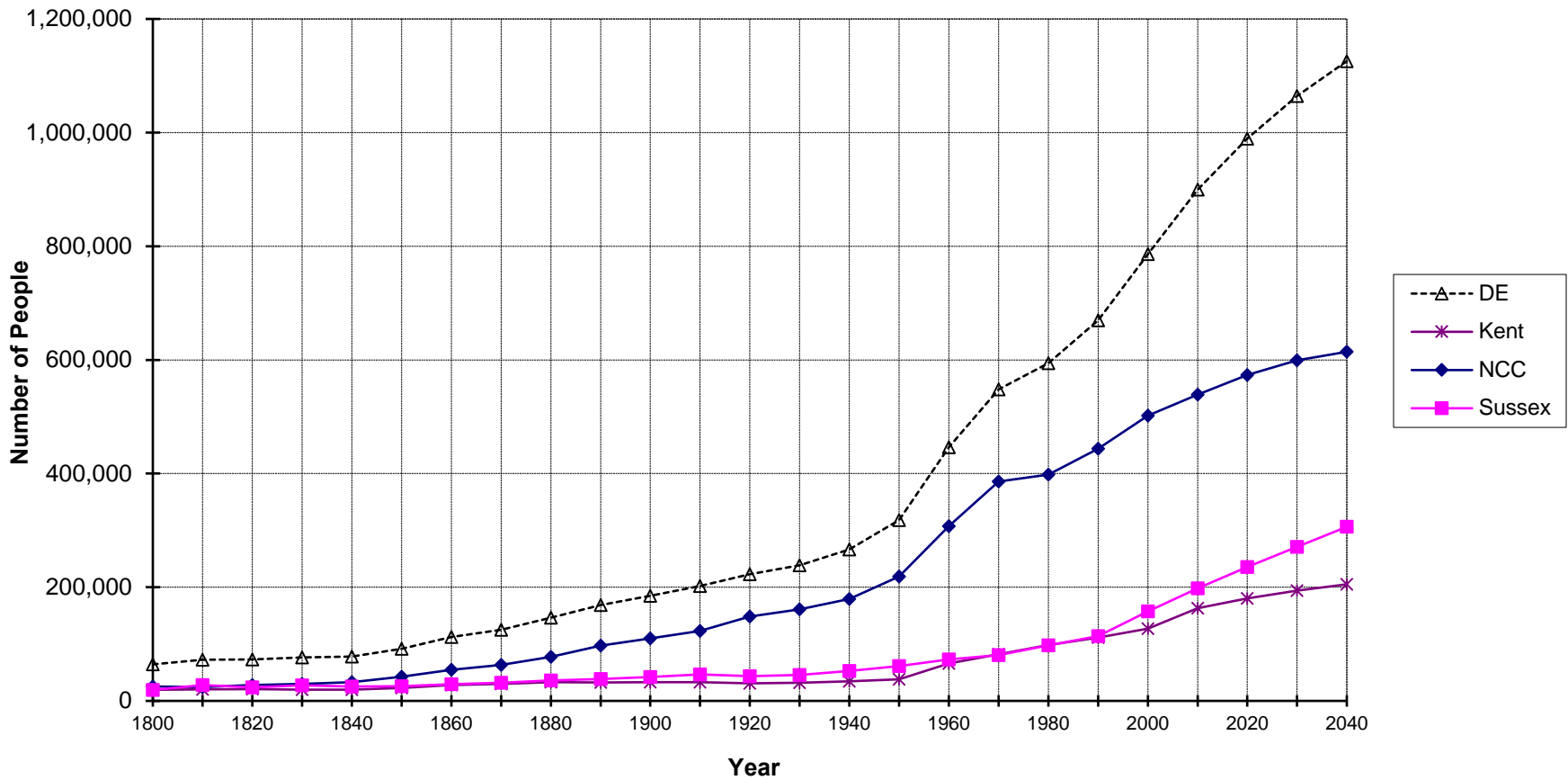
Sources:

Delaware Department of Health and Social Services, Division of Public Healths, Delaware Health Statistics Center

Delaware Population Consortium

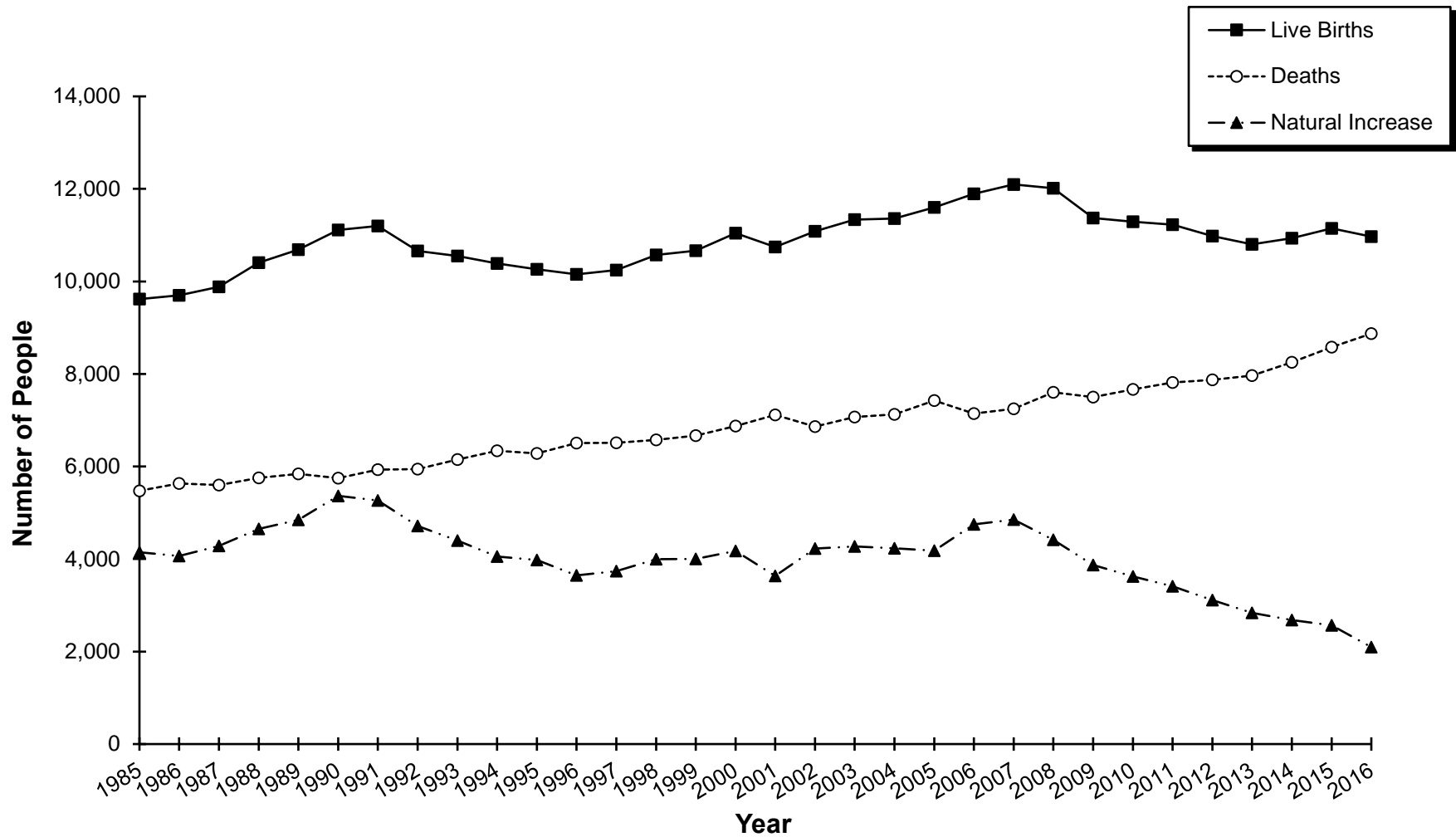
U.S. Bureau of the Census

**Figure A-1. Population Growth, Delaware and Counties, 1800-2040**



Sources: Delaware Department of Health and Social Services, Division of Public Health, Delaware Health Statistics Center  
 Delaware Population Consortium

**Figure A-2. Live Births, Deaths, and Natural Increase, Delaware, 1985-2016**



Source: Delaware Department of Health and Social Services, Division of Public Health, Delaware Health Statistics Center

**TABLE A-2. POPULATION ESTIMATES BY SEX, RACE, AGE, COUNTY, CITY OF DOVER, CITY OF NEWARK, AND CITY OF WILMINGTON, DELAWARE, 2016**

Area/ Sex/Race	Age																	
	Total	0-4	5-9	10-14	15-19	20-24	25-29	30-34	35-39	40-44	45-49	50-54	55-59	60-64	65-69	70-74	75-79	80-84
<b>Delaware</b>	952,986	59,033	60,778	60,613	58,379	61,010	62,120	60,015	59,777	53,508	61,266	67,949	67,755	59,408	52,382	37,541	27,184	20,380
Male	463,657	29,471	30,353	30,348	29,695	31,271	31,627	30,348	29,186	26,447	29,922	33,079	32,557	28,228	24,850	17,403	12,040	8,574
White	326,217	19,353	20,329	19,564	18,431	19,365	20,355	19,914	19,188	17,433	20,895	24,227	25,010	22,565	20,272	14,586	10,119	7,336
Black	101,589	8,390	8,038	7,788	7,828	8,501	8,407	7,822	6,839	5,598	6,345	6,641	5,925	4,511	3,658	2,215	1,447	916
Female	489,329	29,562	30,425	30,265	28,684	29,739	30,493	29,667	30,591	27,061	31,344	34,870	35,198	31,180	27,532	20,138	15,144	11,806
White	344,036	19,383	20,360	19,582	17,723	18,861	19,506	19,332	20,365	17,864	21,402	25,011	26,426	23,931	21,910	16,505	12,526	9,888
Black	111,785	8,457	8,108	7,856	7,848	8,112	8,399	7,853	7,758	6,380	7,460	7,786	7,164	5,917	4,486	2,891	2,003	1,512
<b>Kent</b>	173,668	11,646	11,729	11,441	11,510	11,927	12,571	11,999	11,504	9,751	10,829	12,469	11,853	9,713	8,274	5,847	4,347	3,174
Male	83,539	5,815	5,854	5,708	5,770	6,127	6,341	5,936	5,577	4,591	5,233	5,934	5,632	4,468	3,879	2,621	1,810	1,283
White	57,778	3,999	4,022	3,849	3,759	3,975	4,167	3,857	3,436	3,143	3,709	4,302	4,186	3,359	2,894	2,054	1,379	962
Black	20,749	1,620	1,632	1,580	1,590	1,763	1,757	1,763	1,726	1,019	1,157	1,198	1,073	888	788	458	331	236
Female	90,129	5,831	5,875	5,733	5,740	5,800	6,230	6,063	5,927	5,160	5,596	6,535	6,221	5,245	4,395	3,226	2,537	1,891
White	61,316	4,000	4,025	3,852	3,667	3,809	4,122	3,944	3,360	3,371	3,837	4,608	4,444	3,716	3,183	2,431	1,921	1,409
Black	23,067	1,634	1,649	1,600	1,660	1,603	1,714	1,785	2,194	1,307	1,321	1,446	1,376	1,167	895	592	428	336
<b>New Castle</b>	558,345	34,327	36,162	36,516	35,935	37,700	37,680	35,920	38,232	33,624	38,308	40,304	38,759	32,898	27,998	19,261	13,211	9,647
Male	271,644	17,121	18,040	18,237	18,330	19,255	19,287	18,167	18,410	16,783	18,662	19,785	18,618	15,577	13,047	8,727	5,820	3,910
White	180,087	10,181	11,200	11,338	10,887	11,356	11,804	11,410	12,091	10,614	12,413	13,729	13,533	11,733	9,999	6,806	4,570	3,153
Black	67,748	5,627	5,302	5,149	5,210	5,644	5,545	4,992	4,268	3,918	4,448	4,600	4,073	3,082	2,462	1,502	938	558
Female	286,701	17,206	18,122	18,279	18,445	18,445	18,393	17,753	19,822	16,841	19,646	20,519	20,141	17,321	14,951	10,534	7,391	5,737
White	189,727	10,220	11,253	11,392	10,385	11,116	11,057	10,976	13,427	10,551	12,555	13,793	14,242	12,474	11,175	8,143	5,741	4,562
Black	74,643	5,679	5,351	5,190	5,199	5,473	5,549	5,019	4,731	4,427	5,316	5,418	4,885	4,015	3,060	1,930	1,296	961
Wilmington*	70,119	5,463	5,125	4,832	4,183	4,940	5,795	5,541	4,798	4,528	4,482	4,361	4,157	3,615	3,029	1,969	1,319	930
Male	34,540	2,789	2,630	2,482	2,174	2,558	2,917	2,825	2,477	2,386	2,280	2,225	1,979	1,675	1,323	794	473	299
White	12,290	766	728	720	552	706	1,117	1,158	931	1,062	855	763	743	675	577	398	229	152
Black	19,385	1,768	1,684	1,570	1,411	1,568	1,498	1,369	1,273	1,128	1,252	1,331	1,143	922	666	354	221	136
Female	35,579	2,674	2,495	2,350	2,009	2,382	2,878	2,716	2,321	2,142	2,202	2,136	2,178	1,940	1,706	1,175	846	631
White	11,846	720	660	614	446	592	977	962	746	837	681	620	719	751	751	584	406	295
Black	21,110	1,711	1,628	1,559	1,405	1,542	1,626	1,470	1,383	1,143	1,357	1,393	1,358	1,098	877	544	404	314
<b>Sussex</b>	220,973	13,060	12,887	12,656	10,934	11,383	11,869	12,096	10,041	10,133	12,129	15,176	17,143	16,797	16,110	12,433	9,626	7,559
Male	108,474	6,535	6,459	6,403	5,595	5,889	5,999	6,245	5,199	5,073	6,027	7,360	8,307	8,183	7,924	6,055	4,410	3,381
White	88,352	5,173	5,107	4,377	3,785	4,034	4,384	4,647	3,661	3,676	4,773	6,196	7,291	7,473	7,379	5,726	4,170	3,221
Black	13,092	1,143	1,104	1,059	1,028	1,094	1,105	1,067	845	661	740	843	779	541	408	255	178	122
Female	112,499	6,525	6,428	6,253	5,339	5,494	5,870	5,851	4,842	5,060	6,102	7,816	8,836	8,614	8,186	6,378	5,216	4,178
White	92,993	5,163	5,082	4,338	3,671	3,936	4,327	4,412	3,578	3,942	5,010	6,610	7,740	7,741	7,552	5,931	4,864	3,917
Black	14,075	1,144	1,108	1,066	989	1,036	1,136	1,049	833	646	823	922	903	735	531	369	279	215

Sources: Delaware Department of Health and Social Services, Division of Public Health, Delaware Health Statistics Center  
Delaware Population Consortium