



## Weekly Influenza Report Week 11 (03/15/09-03/21/09)

### National Synopsis:

During week 10 (March 8-14, 2009), influenza activity decreased slightly in the United States.

- One thousand one hundred two (21.7%) specimens tested by U.S. World Health Organization (WHO) and National Respiratory and Enteric Virus Surveillance System (NREVSS) collaborating laboratories and reported to CDC/Influenza Division were positive for influenza.
- The proportion of deaths attributed to pneumonia and influenza (P&I) was below the epidemic threshold.
- Six influenza-associated pediatric deaths were reported.
- The proportion of outpatient visits for influenza-like illness (ILI) was above the national baseline. ILI decreased nationally and in eight of the nine regions compared to the previous week. Eight of nine surveillance regions reported ILI above their region-specific baselines.
- Thirty states reported widespread influenza activity, 18 states reported regional activity; two states reported local influenza activity; and Puerto Rico and the District of Columbia reported sporadic influenza activity.

### Delaware Influenza Surveillance:

**Total Laboratory Confirmed Cases: 643**

**Influenza A: 415**

**Influenza B: 226**

**Influenza A&B: 2**

**Counties:**

- **New Castle – 281**
- **Kent – 214**
- **Sussex – 148**

**Age Range: 20 days – 94 yo**

**Deaths: 0**

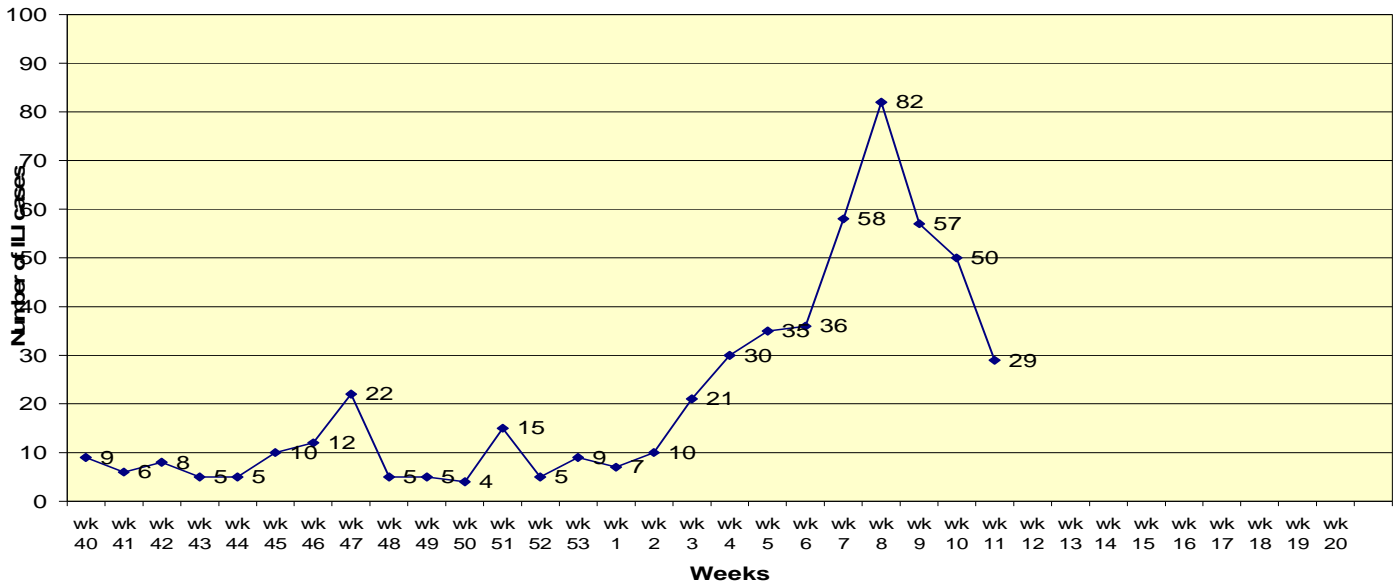
**Total Unconfirmed Cases: 104**

**Influenza Activity for Week 11: Widespread**

Note: Beginning in Week 8, the DPH Lab requested that each hospital submit only 3-5 specimens per week for confirmatory testing; this may affect the number of unconfirmed cases in the future weeks.

- **No Activity:** No laboratory-confirmed cases of influenza and no reported increase in the number of cases of ILI.
- **Sporadic:** Small numbers or isolated cases of laboratory-confirmed influenza cases or a single laboratory-confirmed influenza outbreak has been reported, but there is no increase in cases of ILI.
- **Local:** Outbreaks of influenza or increases in ILI cases and recent laboratory-confirmed influenza in a single region of the state.
- **Regional:** Outbreaks of influenza or increases in ILI and recent laboratory confirmed influenza in at least 2 but less than half the regions of the state. (This level of activity does not apply for small states with 4 or fewer regions.)
- **Widespread:** Outbreaks of influenza or increases in ILI cases and recent laboratory-confirmed influenza in at least half the regions of the state.

**ILI cases reported from Sentinel providers**  
**5 of 12 sentinel providers reporting**



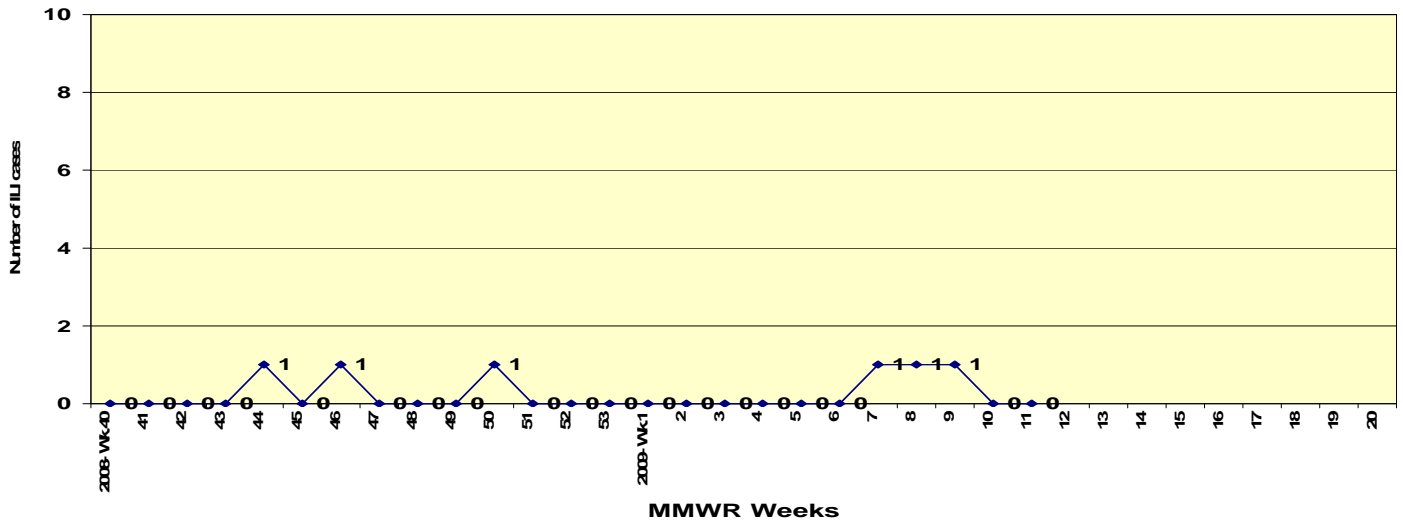
**Note: This data is current as of distribution date and is subject to change.**

**Note: Week 5 – No sentinel providers reported ILI to DPH (n=0). Therefore, the zero does not indicate there were no cases.**

**ILI cases reported from corporations/LTCF**

**3 of 5\* sites reporting**

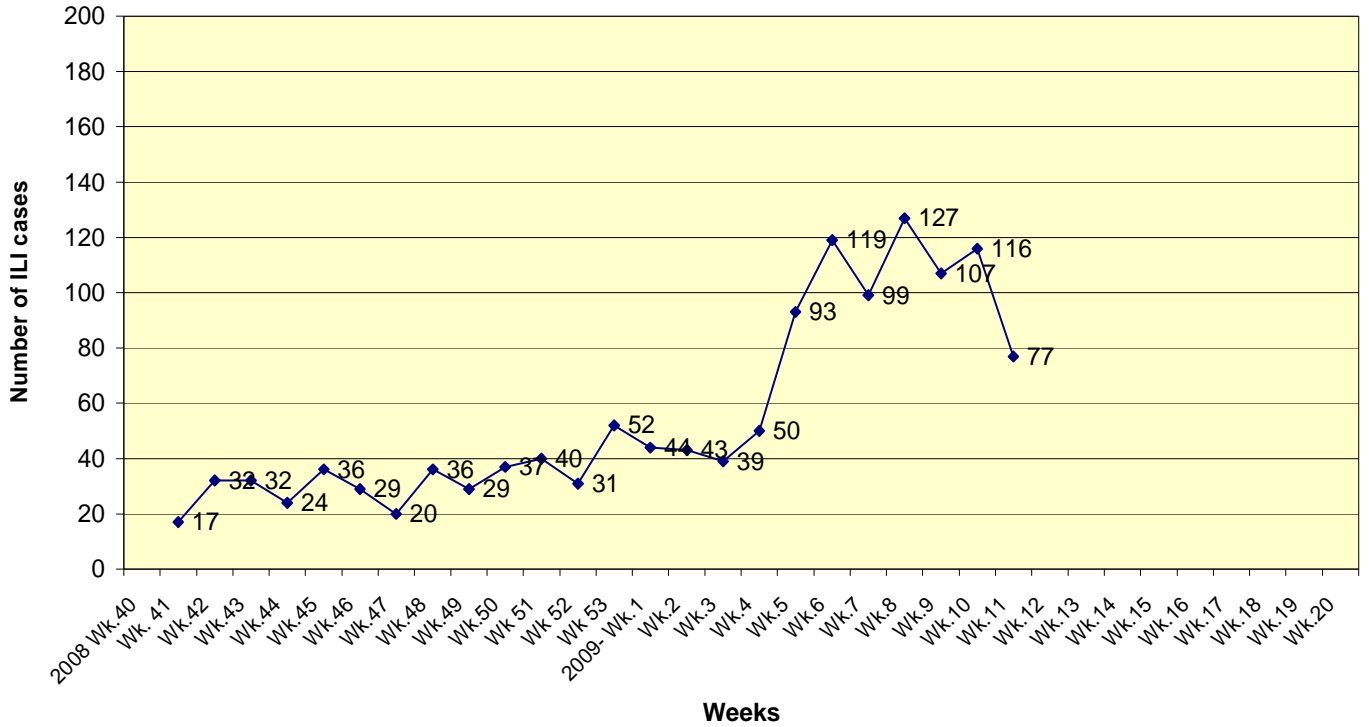
**(\*one organization that previously reported is no longer participating)**



**Note: This data is current as of distribution date and is subject to change**

# Hospital ILI Cases

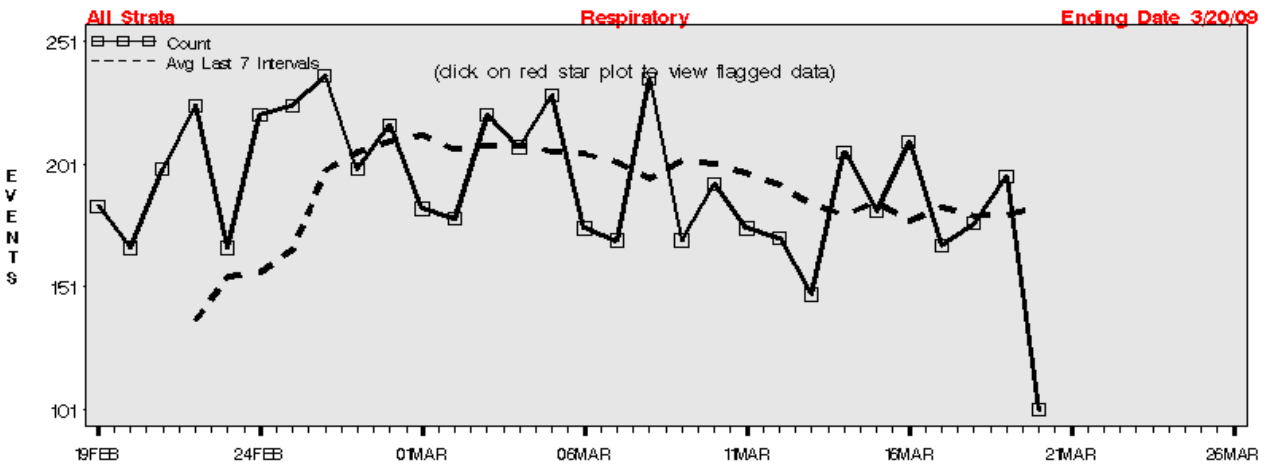
## 8 of 8 hospitals reporting



## Respiratory – Syndromic Surveillance

### Early Aberration Reporting System (EARS)

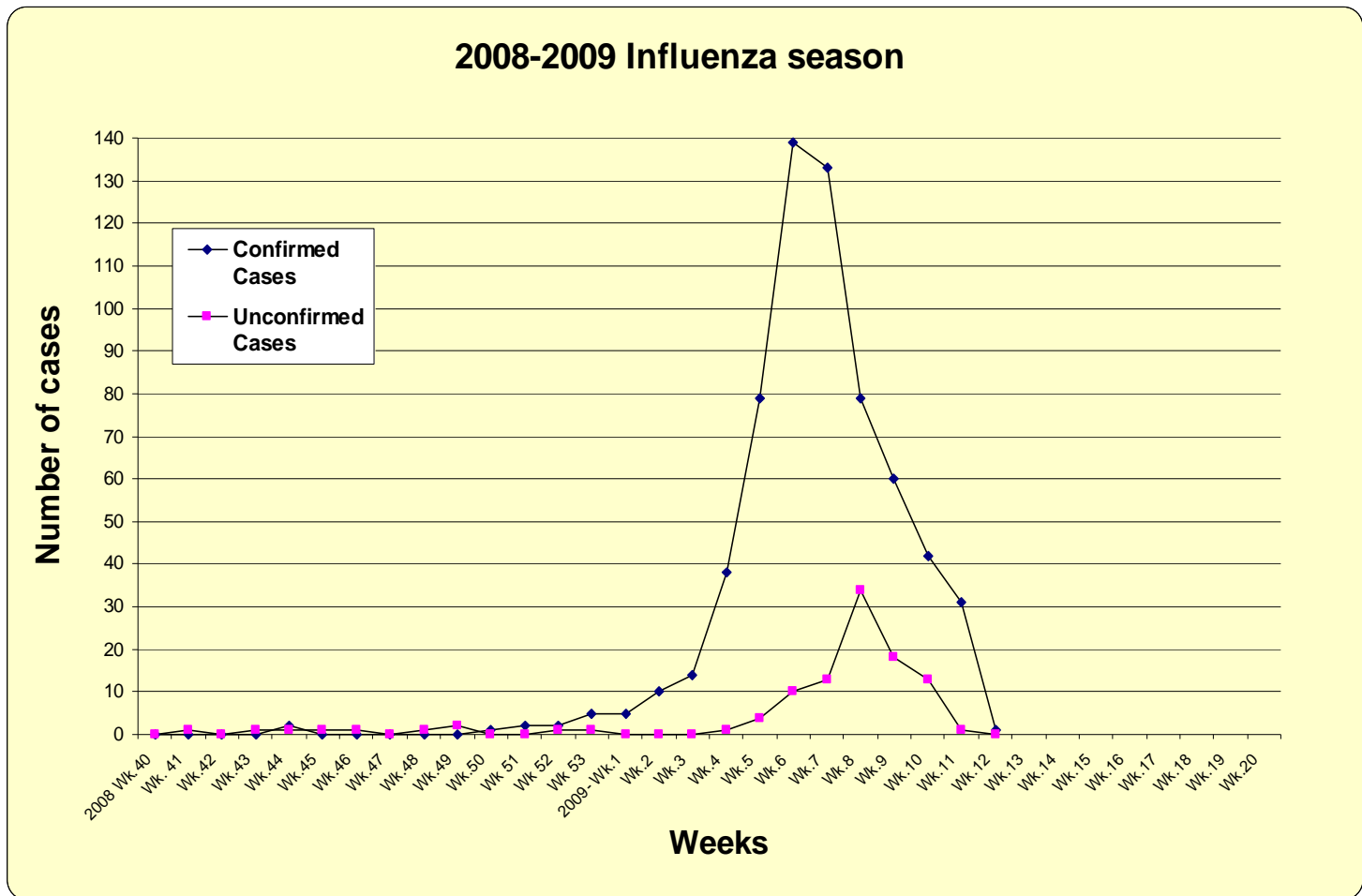
#### Hospital Syndromic Surveillance



C *	184	199	167	225	199	183	221	229	170	170	175	148	182	168	196	
F**		167	225	221	237	217	179	208	175	236	193	171	206	210	177	101

**C1= Mild Sensitivity    C2= Moderate Sensitivity    C3= Ultra Sensitivity**  
**\*C = total count (last three digits)    \*\*F are flags 1= C1 2= C2 3= C3 4= C1C3 5= C2C3 6= C1C2C3**

**2008-2009 Influenza season  
Confirmed and Unconfirmed Cases\***



**\*Note:**

**Confirmed cases: PCR (Polymerase Chain Reaction) positive or Influenza culture positive.  
Unconfirmed cases: Rapid assay positive, not confirmed with PCR or culture.**