



Delaware Vital Statistics Annual Report Fetal and Perinatal Mortality, 2013

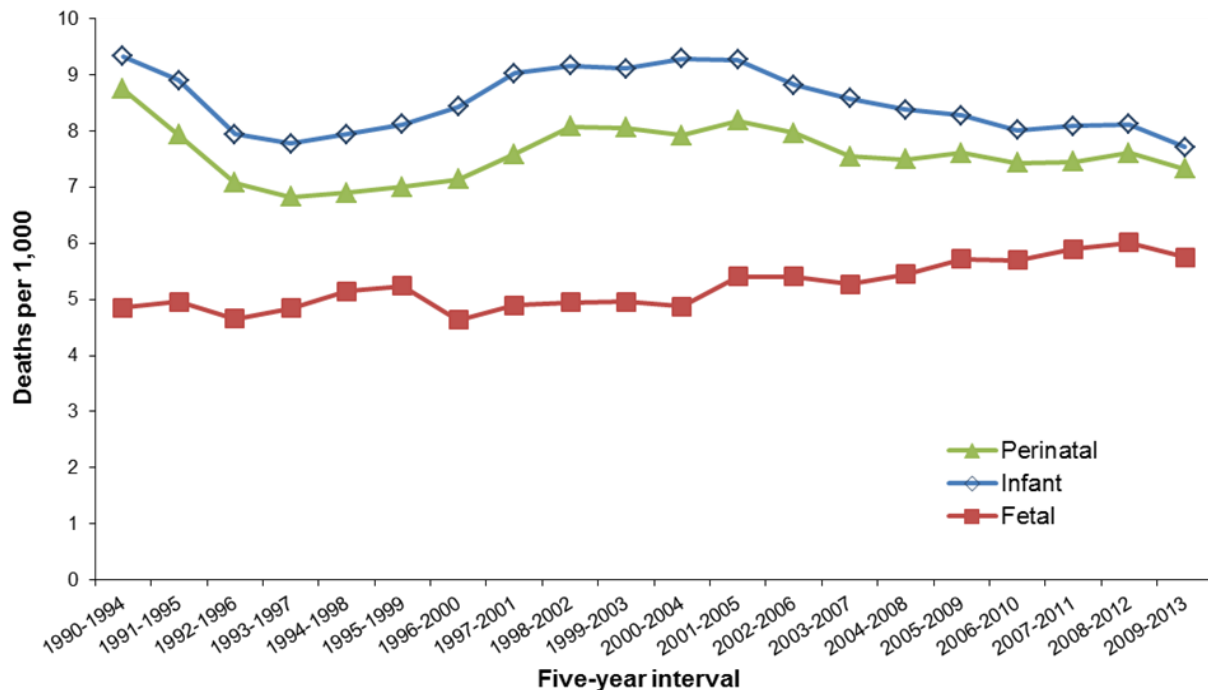
Suggested Citation:

*Delaware Health Statistics Center. Delaware Vital Statistics Annual Report, 2016.
Delaware Department of Health and Social Services, Division of Public Health: 2016.*

FETAL AND PERINATAL DEATHS

Perinatal mortality refers to deaths occurring in the period around delivery, and includes late fetal deaths (>28 weeks gestation) and early infant deaths (<7 days of age). Perinatal mortality trends paralleled those of infant mortality, decreasing from 1990-1994 to their lowest level in 1993-1997, and then increasing through 2001-2005, after which they began a gradual decrease through 2009-2013.

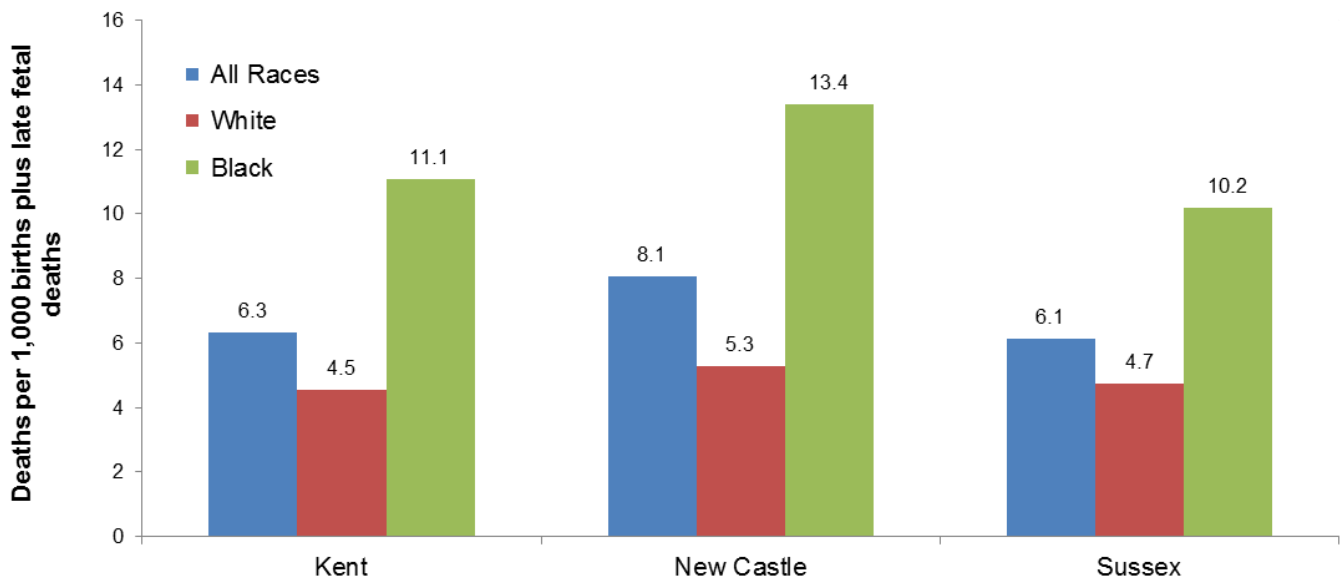
**Five-year Fetal, Perinatal, and Infant Mortality Rates
Delaware, 1990-2013**



Source: Delaware Health Statistics Center

Like infant mortality rates, perinatal mortality rates for black women were substantially higher than the perinatal mortality rates for white women, regardless of county. In all three counties, the perinatal mortality rate for black women was more than double that of white women.

**Five-year Average Perinatal Mortality Rates by Race and County
Delaware, 2009-2013**



Source: Delaware Health Statistics Center

FETAL AND PERINATAL DEATHS

In 2013, there were 55 reported fetal deaths in Delaware. In 2009-2013, the fetal mortality rate was 5.8 fetal deaths per 1,000 live births and fetal deaths. Fetal mortality rates for black women have been consistently higher than the rates for white women, and in 2009-2013 they were 55 percent higher than the rate of white women (8.4 versus 4.8).

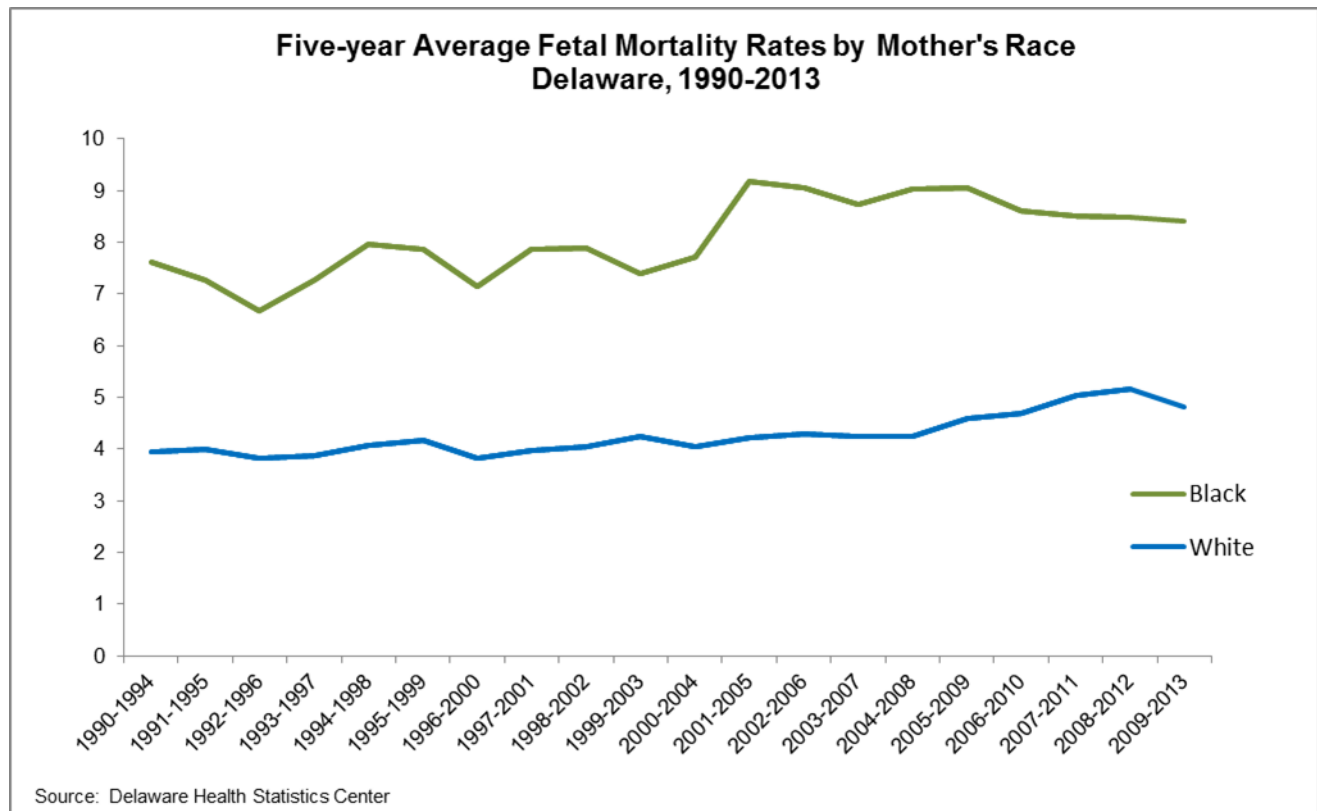


TABLE D-1
NUMBER OF FETAL DEATHS BY RACE, HISPANIC ORIGIN, AND AGE OF WOMAN

DELAWARE AND COUNTIES, 2013

Area/ Age	Race-Hispanic Origin				
	All Races	White	Black	Other	Hispanic*
Delaware	55	24	26	5	5
<20	4	2	2	0	0
20-24	15	8	7	0	3
25-34	24	8	13	3	1
35+	12	6	4	2	1
Unknown	0	0	0	0	0
Kent	17	7	9	1	1
<20	2	1	1	0	0
20-24	3	1	2	0	1
25-34	9	3	5	1	0
35+	3	2	1	0	0
Unknown	0	0	0	0	0
New Castle	30	11	15	4	2
<20	1	0	1	0	0
20-24	9	4	5	0	1
25-34	12	4	6	2	1
35+	8	3	3	2	0
Unknown	0	0	0	0	0
Sussex	8	6	2	0	2
<20	1	1	0	0	0
20-24	3	3	0	0	1
25-34	3	1	2	0	0
35+	1	1	0	0	1
Unknown	0	0	0	0	0

Notes:

Fetal deaths are reportable events if the fetus weighs at least 350 grams, or if weight is unknown, has reached at least 20 weeks of gestation. For more details, see "Basic Definitions".

*People of Hispanic origin may be of any race.

Source:

Delaware Health Statistics Center

PRAGERACECTY

TABLE D-2
NUMBER FETAL DEATHS BY RACE, HISPANIC ORIGIN, AND EDUCATION OF WOMAN
DELAWARE, 2013

Education	Race-Hispanic Origin				
	All Races	White	Black	Other	Hispanic*
Total	55	24	26	5	5
<9	2	2	0	0	2
9 to 11	6	3	3	0	0
H.S. Grad	18	6	11	1	3
1 to 3 College	11	4	7	0	0
4+ College	18	9	5	4	0
Unknown	0	0	0	0	0

PEDURACE

Notes:

Fetal deaths are reportable events if the fetus weighs at least 350 grams, or if weight is unknown, has reached at least 20 weeks of gestation. For more details, see "Basic Definitions".

*People of Hispanic origin may be of any race.

Source:

Delaware Health Statistics Center

TABLE D-3
NUMBER OF FETAL DEATHS BY RACE, HISPANIC ORIGIN, AND MARITAL STATUS OF WOMAN
DELAWARE AND COUNTIES, 2013

Area/ Marital Status	Race-Hispanic Origin				
	All Races	White	Black	Other	Hispanic*
Delaware	55	24	26	5	5
Married	25	14	7	4	2
Single	30	10	19	1	3
Kent	17	7	9	1	1
Married	8	5	2	1	0
Single	9	2	7	0	1
New Castle	30	11	15	4	2
Married	13	6	4	3	1
Single	17	5	11	1	1
Sussex	8	6	2	0	2
Married	4	3	1	0	1
Single	4	3	1	0	1

PRMARIT

Note:

Fetal deaths are reportable events if the fetus weighs at least 350 grams, or if weight is unknown, has reached at least 20 weeks of gestation. For more details, see "Basic Definitions".

*People of Hispanic origin may be of any race.

Source:

Delaware Health Statistics Center

TABLE D-4
NUMBER OF FETAL DEATHS BY WEIGHT OF FETUS IN GRAMS AND RACE OF WOMAN

DELAWARE AND COUNTIES, 2013

Area/ Weight	Race			
	All Races	White	Black	Other
Delaware	55	24	26	5
<500	19	6	8	5
500-749	11	2	9	0
750-999	1	1	0	0
1000-1499	4	2	2	0
1500-1999	5	3	2	0
2000-2499	6	4	2	0
2500+	9	6	3	0
Unknown	0	0	0	0
Kent	17	7	9	1
<500	5	2	2	1
500-749	6	2	4	0
750-999	0	0	0	0
1000-1499	2	1	1	0
1500-1999	2	1	1	0
2000-2499	1	1	0	0
2500+	1	0	1	0
Unknown	0	0	0	0
New Castle	30	11	15	4
<500	11	2	5	4
500-749	5	0	5	0
750-999	1	1	0	0
1000-1499	1	1	0	0
1500-1999	3	2	1	0
2000-2499	3	1	2	0
2500+	6	4	2	0
Unknown	0	0	0	0
Sussex	8	6	2	0
<500	3	2	1	0
500-749	0	0	0	0
750-999	0	0	0	0
1000-1499	1	0	1	0
1500-1999	0	0	0	0
2000-2499	2	2	0	0
2500+	2	2	0	0
Unknown	0	0	0	0

FDWTRACE

Note:

Fetal deaths are reportable events if the fetus weighs at least 350 grams, or if weight is unknown, has reached at least 20 weeks of gestation. For more details, see "Basic Definitions."

Source:

Delaware Health Statistics Center

TABLE D-5
NUMBER OF FETAL DEATHS BY WEEKS OF GESTATION AND RACE OF WOMAN

DELAWARE AND COUNTIES, 2013

Area/ Age	Race			
	All Races	White	Black	Other
Delaware	55	24	26	5
<20 Weeks	0	0	0	0
20-24 Weeks	26	6	15	5
25-29 Weeks	8	5	3	0
30-34 Weeks	7	4	3	0
35-39 Weeks	8	4	4	0
40+ Weeks	6	5	1	0
Unknown	0	0	0	0
Kent	17	7	9	1
<20 Weeks	0	0	0	0
20-24 Weeks	10	4	5	1
25-29 Weeks	2	1	1	0
30-34 Weeks	3	1	2	0
35-39 Weeks	1	0	1	0
40+ Weeks	1	1	0	0
Unknown	0	0	0	0
New Castle	30	11	15	4
<20 Weeks	0	0	0	0
20-24 Weeks	15	2	9	4
25-29 Weeks	4	2	2	0
30-34 Weeks	4	3	1	0
35-39 Weeks	3	1	2	0
40+ Weeks	4	3	1	0
Unknown	0	0	0	0
Sussex	8	6	2	0
<20 Weeks	0	0	0	0
20-24 Weeks	1	0	1	0
25-29 Weeks	2	2	0	0
30-34 Weeks	0	0	0	0
35-39 Weeks	4	3	1	0
40+ Weeks	1	1	0	0
Unknown	0	0	0	0

Note:

FDGESRAC

Fetal deaths are reportable events if the fetus weighs at least 350 grams, or if weight is unknown, has reached at least 20 weeks of gestation. For more details, see "Basic Definitions".

Source:

Delaware Health Statistics Center

TABLE D-6
FIVE-YEAR AVERAGE PERINATAL MORTALITY RATES BY RACE

DELAWARE AND COUNTIES, 1995-2013

Area/ Race	1995 -1999	1996 -2000	1997 -2001	1998 -2002	1999 -2003	2000 -2004	2001 -2005	2002 -2006	2003 -2007	2004 -2008	2005 -2009	2006 -2010	2007 -2011	2008 -2012	2009 -2013
Delaware															
All Races	7.0	7.1	7.6	8.1	8.1	7.9	8.2	8.0	7.5	7.5	7.6	7.4	7.4	7.6	7.3
White	5.4	5.6	5.8	6.2	6.3	6.3	6.2	6.2	6.0	5.9	5.7	5.6	5.5	5.3	5.0
Black	12.0	12.4	13.8	14.4	14.2	13.4	14.3	13.5	12.6	12.5	12.9	12.3	12.3	12.9	12.5
Kent															
All Races	7.6	7.5	7.3	8.9	8.7	8.2	8.7	8.0	5.8	6.0	6.3	5.9	6.2	7.1	6.3
White	5.8	6.0	6.2	8.1	7.8	7.3	6.9	5.9	3.6	3.8	3.7	4.4	4.8	5.1	4.5
Black	13.3	12.9	11.7	11.8	12.1	10.7	13.8	13.7	11.5	11.8	13.7	10.4	10.0	12.4	11.1
New Castle															
All Races	6.9	7.3	7.9	8.3	8.5	8.3	8.5	8.3	8.1	8.1	8.2	8.0	8.3	8.4	8.1
White	4.9	5.3	5.6	5.8	6.2	6.3	6.4	6.3	6.4	6.3	6.4	5.7	5.8	5.7	5.3
Black	13.1	13.7	15.3	16.3	15.9	14.9	15.0	14.1	13.4	13.2	12.7	13.1	13.7	13.6	13.4
Sussex															
All Races	6.6	6.3	6.6	6.4	5.9	6.2	6.6	6.9	7.3	7.0	7.0	7.3	6.1	5.9	6.1
White	6.5	6.1	5.7	5.5	5.1	5.3	5.2	6.1	6.9	6.4	5.7	6.5	5.4	4.5	4.7
Black	6.6	6.6	9.7	9.6	9.1	9.8	12.0	10.3	10.7	10.6	12.9	10.8	8.9	10.6	10.2

Note:

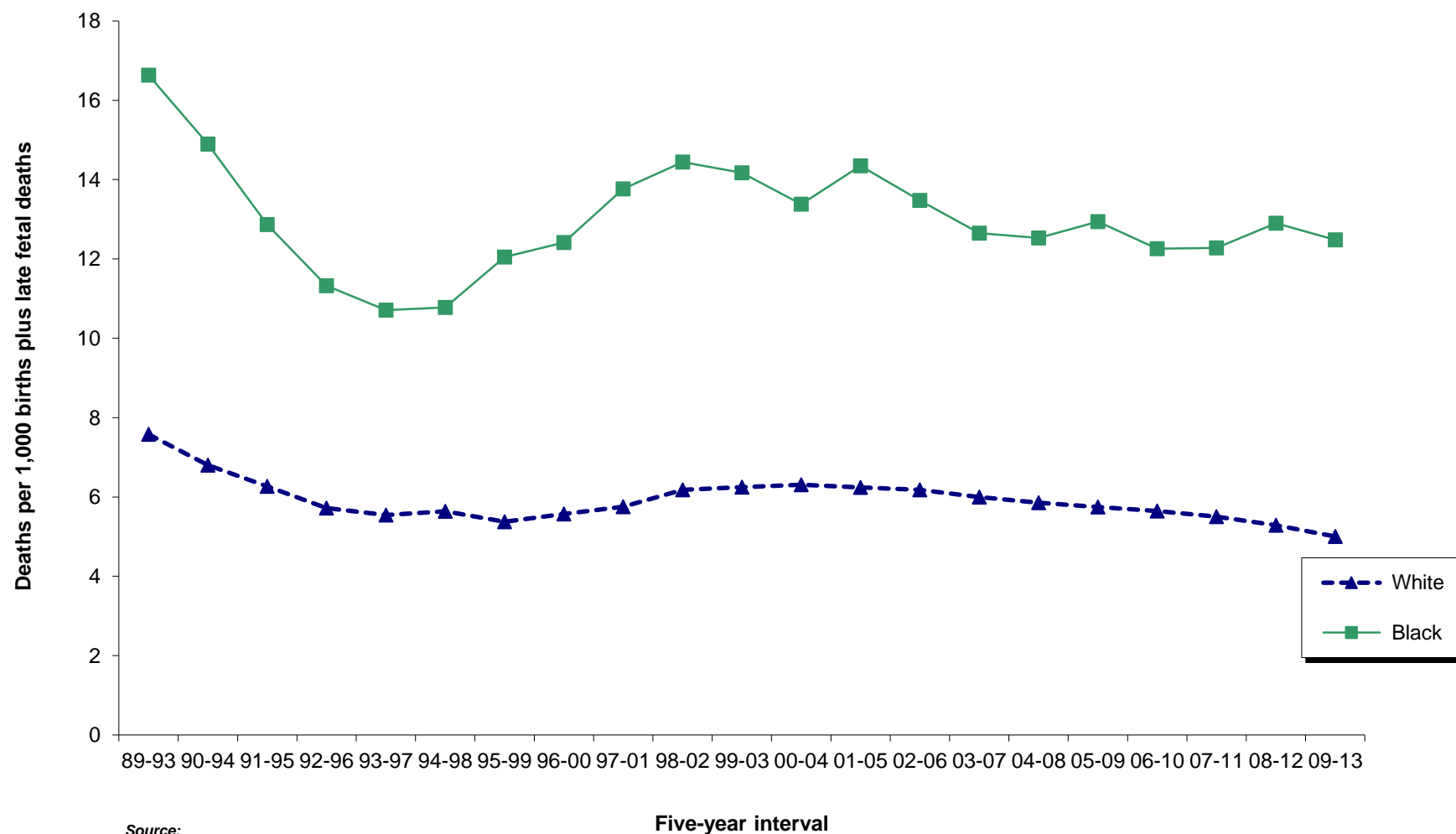
Perinatal mortality rate defined as: Infant deaths of less than 7 days and fetal deaths with gestation of 28 weeks or more, per 1,000 live births and specified fetal deaths.

Source:

Delaware Health Statistics Center

Peri_ra

Figure D-1
Five-year Average Perinatal Mortality Rates by Race
Delaware, 1989-2013



Source:
Delaware Health Statistics Center