



Delaware Weekly Influenza Surveillance Report

Week 9 (February 27 – March 5, 2011)
Delaware Division of Public Health

National Synopsis-2010-2011:

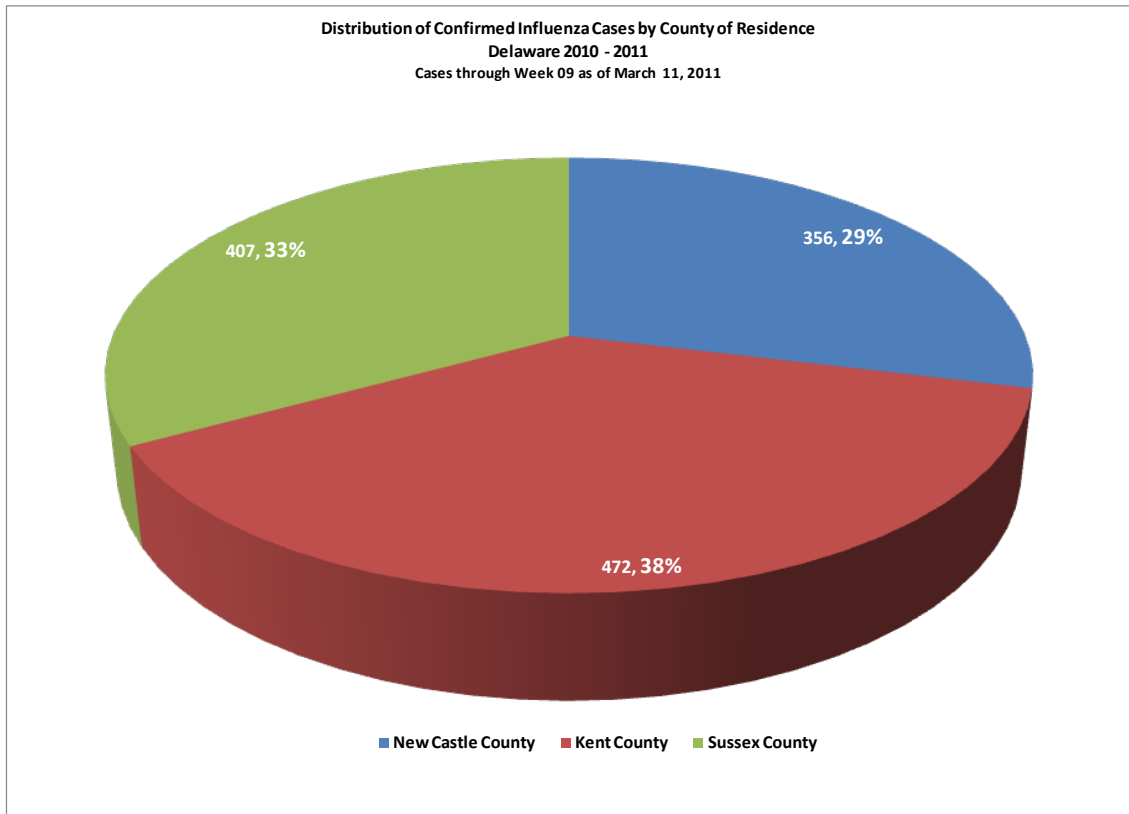
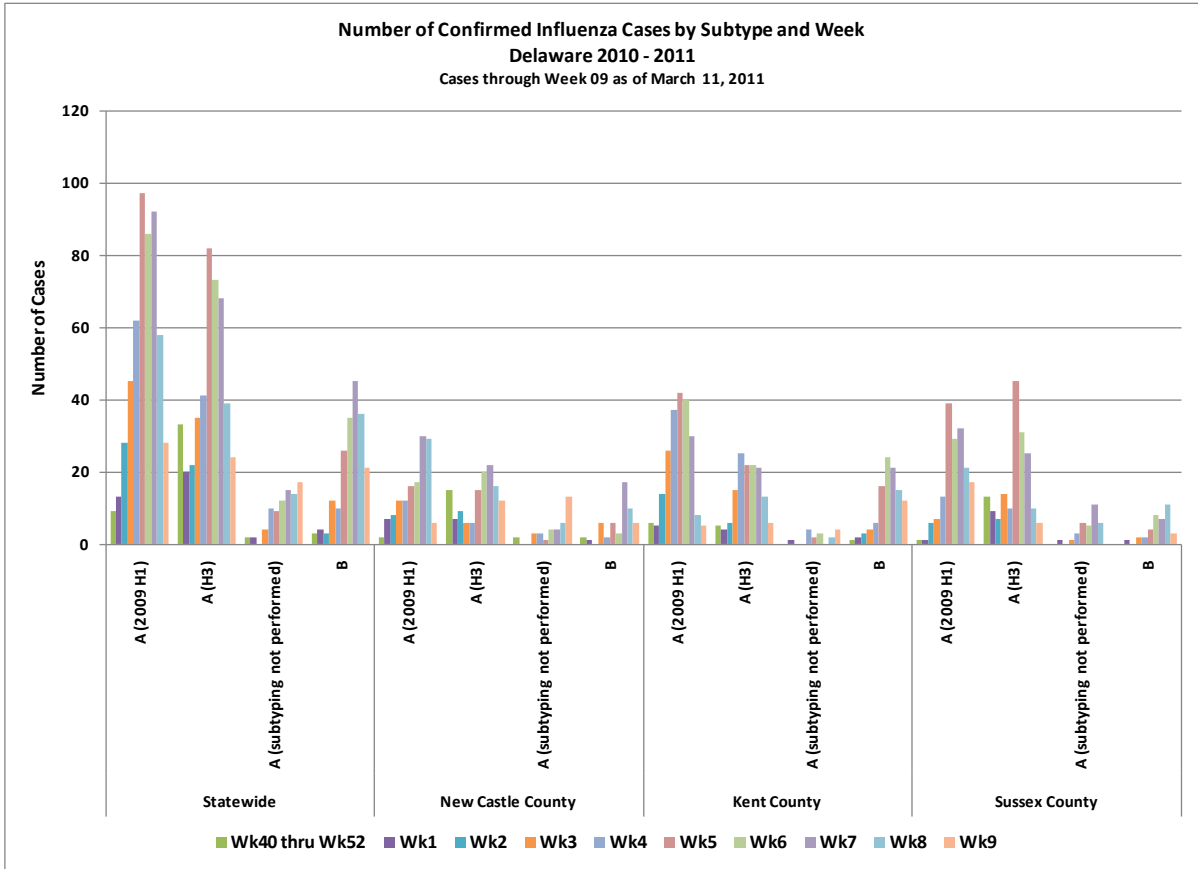
NOTE: National data is updated Friday of each week. Please visit <http://www.cdc.gov/flu/weekly/> for the most current information.

Delaware Influenza Surveillance-2010-2011:

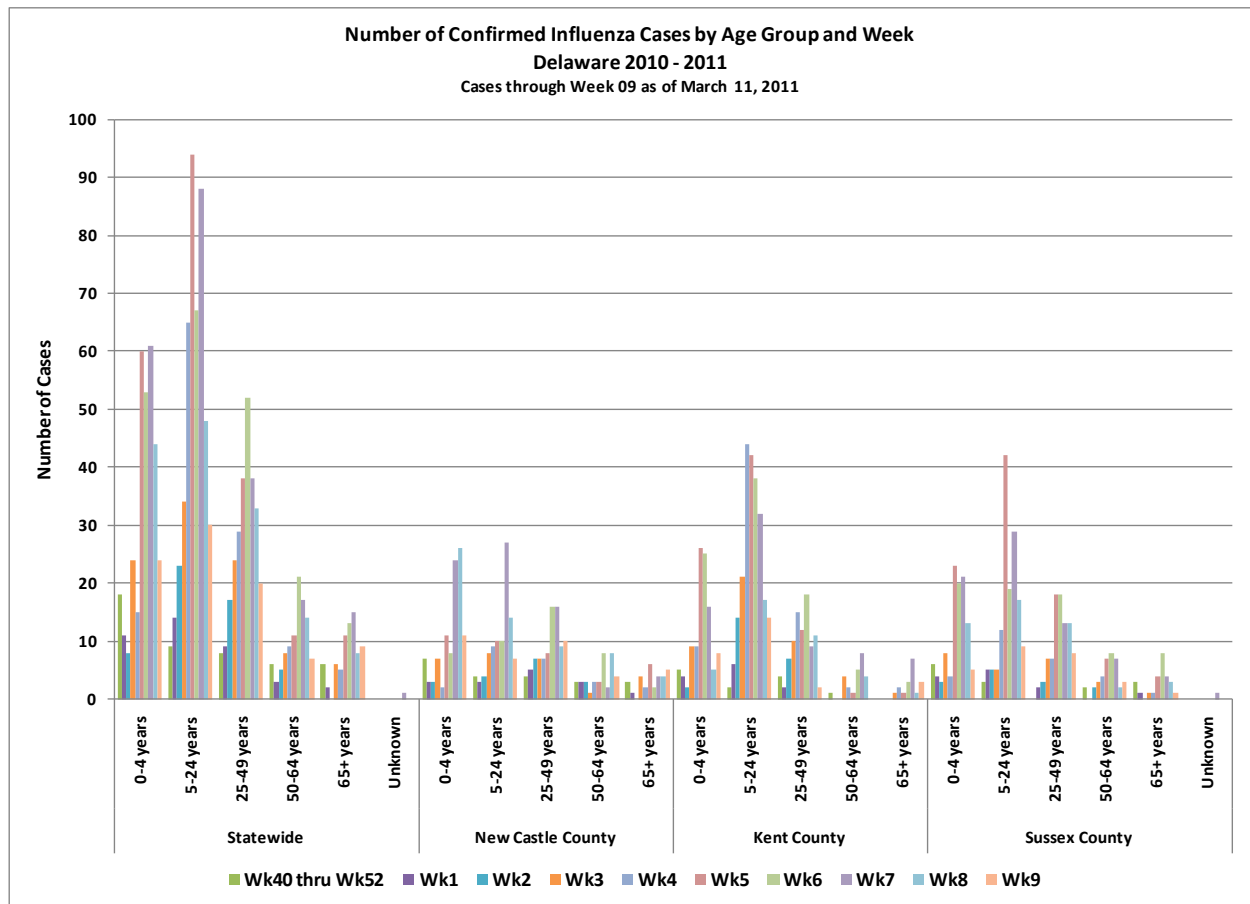
† Influenza Positive and Confirmed Cases Reported through Week 09 (Week ending March 5, 2011)

Confirmed Flu Cases by Subtype		2010	2011											
		Wk40 thru Wk52	Wk1	Wk2	Wk3	Wk4	Wk5	Wk6	Wk7	Wk8	Wk9	YTD	Total	Pct of Total
Statewide	A (2009 H1)	9	13	28	45	62	97	86	92	58	28	518	1235	
	A (H3)	33	20	22	35	41	82	73	68	39	24	437		
	A (subtyping not performed)	2	2		4	10	9	12	15	14	17	85		
	B	3	4	3	12	10	26	35	45	36	21	195		
New Castle County	A (2009 H1)	2	7	8	12	12	16	17	30	29	6	139	356	28.8%
	A (H3)	15	7	9	6	6	15	20	22	16	12	128		
	A (subtyping not performed)	2			3	3	1	4	4	6	13	36		
	B	2	1		6	2	6	3	17	10	6	53		
Kent County	A (2009 H1)	6	5	14	26	37	42	40	30	8	5	213	472	38.2%
	A (H3)	5	4	6	15	25	22	22	21	13	6	139		
	A (subtyping not performed)	0	1			4	2	3	0	2	4	16		
	B	1	2	3	4	6	16	24	21	15	12	104		
Sussex County	A (2009 H1)	1	1	6	7	13	39	29	32	21	17	166	407	33.0%
	A (H3)	13	9	7	14	10	45	31	25	10	6	170		
	A (subtyping not performed)	0	1		1	3	6	5	11	6	0	33		
	B	0	1		2	2	4	8	7	11	3	38		

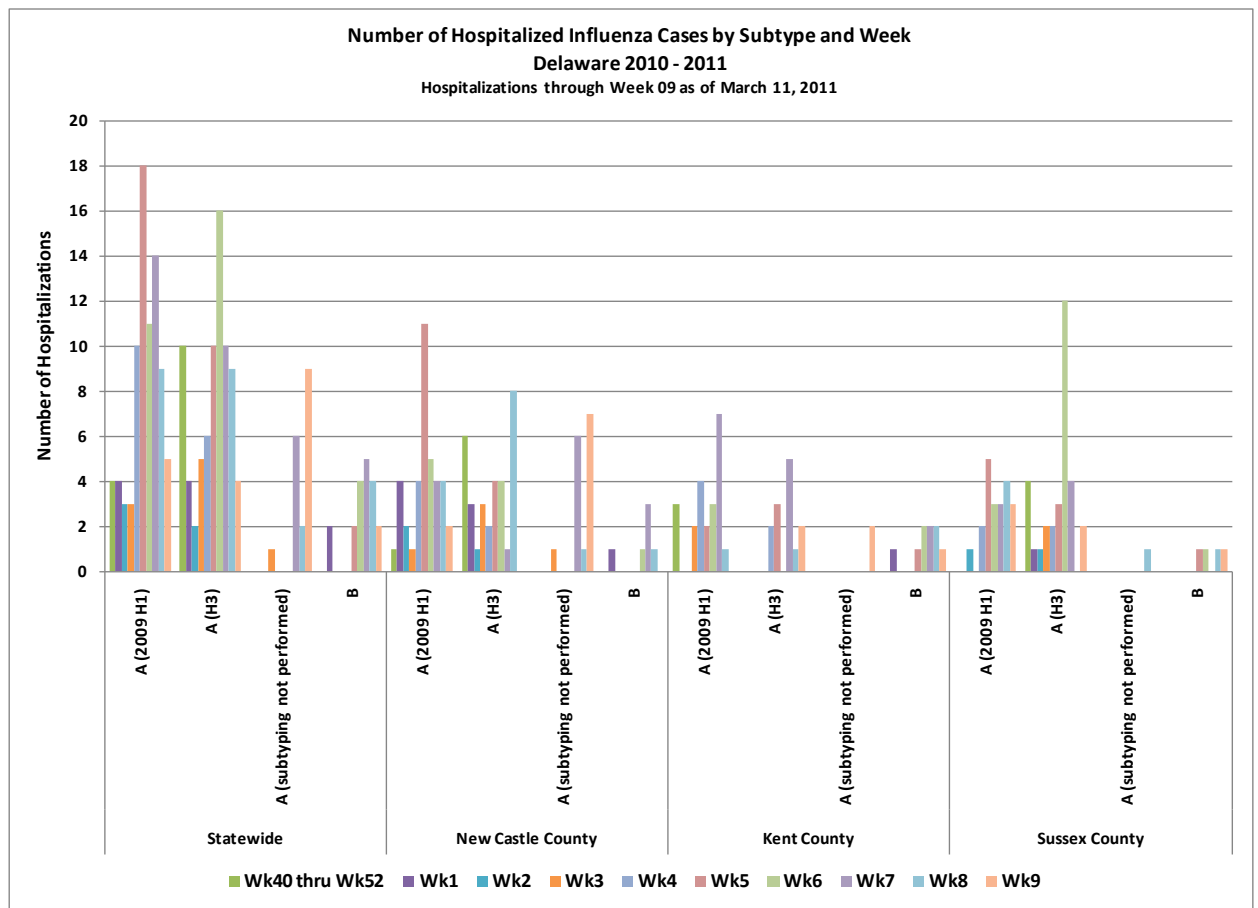
- 1,040 of the 1,235 (84.2%) of confirmed influenza cases were type A
 - Of these, 518 (49.8%) were subtype 2009 H1, and
 - 437 (42.0%) were subtype H3N2.
 - The remaining 85 (8.2%) were of unknown subtype.
- 195 of the 1,235 (15.8%) confirmed influenza cases were type B.
- Distribution of confirmed influenza cases across county were as follows (see also graphic on following page):
 - 38.2% occurred among Kent County residents
 - 28.8% occurred among New Castle County residents
 - 33.0% occurred among Sussex County residents



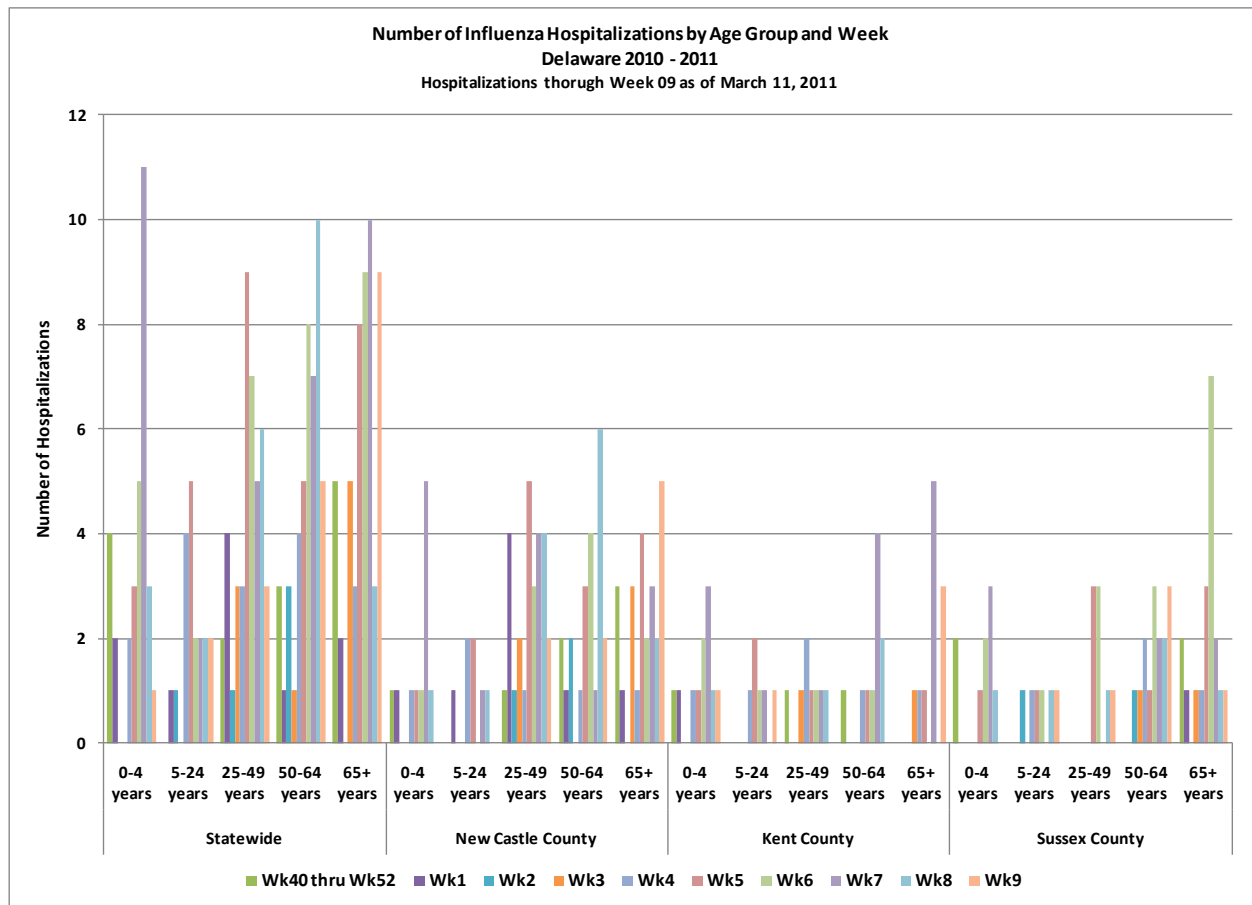
Confirmed Flu Cases by Age Group		2010	2011												
		Wk40 thru Wk52	Wk1	Wk2	Wk3	Wk4	Wk5	Wk6	Wk7	Wk8	Wk9	YTD	Total	Pct of Total	
Statewide	0-4 years	18	11	8	24	15	60	53	61	44	24	318	1235		
	5-24 years	9	14	23	34	65	94	67	88	48	30	472			
	25-49 years	8	9	17	24	29	38	52	38	33	20	268			
	50-64 years	6	3	5	8	9	11	21	17	14	7	101			
	65+ years	6	2		6	5	11	13	15	8	9	75			
	Unknown	0	0	0	0	0	0	0	1	0	0	1			
New Castle County	0-4 years	7	3	3	7	2	11	8	24	26	11	102	356	28.8%	
	5-24 years	4	3	4	8	9	10	10	27	14	7	96			
	25-49 years	4	5	7	7	7	8	16	16	9	10	89			
	50-64 years	3	3	3	1	3	3	8	2	8	4	38			
	65+ years	3	1		4	2	6	2	4	4	5	31			
Kent County	0-4 years	5	4	2	9	9	26	25	16	5	8	109	472	38.2%	
	5-24 years	2	6	14	21	44	42	38	32	17	14	230			
	25-49 years	4	2	7	10	15	12	18	9	11	2	90			
	50-64 years	1			4	2	1	5	8	4	0	25			
	65+ years	0			1	2	1	3	7	1	3	18			
Sussex County	0-4 years	6	4	3	8	4	23	20	21	13	5	107	407	33.0%	
	5-24 years	3	5	5	5	12	42	19	29	17	9	146			
	25-49 years	0	2	3	7	7	18	18	13	13	8	89			
	50-64 years	2		2	3	4	7	8	7	2	3	38			
	65+ years	3	1		1	1	4	8	4	3	1	26			
	Unknown								1	0	0	1			



Flu Hospitalizations by Subtype		2010	2011													
		Wk40 thru Wk52	Wk1	Wk2	Wk3	Wk4	Wk5	Wk6	Wk7	Wk8	Wk9	YTD	Total	Pct of Total		
Statewide	A (2009 H1)	4	4	3	3	10	18	11	14	9	5	81	194			
	A (H3)	10	4	2	5	6	10	16	10	9	4	76				
	A (subtyping not performed)	0			1		0	0	6	2	9	18				
	B	0	2				2	4	5	4	2	19				
New Castle County	A (2009 H1)	1	4	2	1	4	11	5	4	4	2	38	91	46.9%		
	A (H3)	6	3	1	3	2	4	4	1	8	0	32				
	A (subtyping not performed)	0			1		0	0	6	1	7	15				
	B	0	1				0	1	3	1	0	6				
Kent County	A (2009 H1)	3			2	4	2	3	7	1	0	22	46	23.7%		
	A (H3)	0				2	3	0	5	1	2	13				
	A (subtyping not performed)	0					0	0	0	0	2	2				
	B	0	1				1	2	2	2	1	9				
Sussex County	A (2009 H1)	0		1		2	5	3	3	4	3	21	57	29.4%		
	A (H3)	4	1	1	2	2	3	12	4	0	2	31				
	A (subtyping not performed)	0					0	0	0	1	0	1				
	B	0					1	1	0	1	1	4				



Flu Hospitalizations by Age Group		2010	2011													
		Wk40 thru Wk52	Wk1	Wk2	Wk3	Wk4	Wk5	Wk6	Wk7	Wk8	Wk9	YTD	Total	Pct of Total		
Statewide	0-4 years	4	2			2	3	5	11	3	1	31	194			
	5-24 years	0	1	1		4	5	2	2	2	2	19				
	25-49 years	2	4	1	3	3	9	7	5	6	3	43				
	50-64 years	3	1	3	1	4	5	8	7	10	5	47				
	65+ years	5	2		5	3	8	9	10	3	9	54				
New Castle County	0-4 years	1	1			1	1	1	5	1	0	11	91	46.9%		
	5-24 years	0	1			2	2	0	1	1	0	7				
	25-49 years	1	4	1	2	1	5	3	4	4	2	27				
	50-64 years	2	1	2		1	3	4	1	6	2	22				
	65+ years	3	1		3	1	4	2	3	2	5	24				
Kent County	0-4 years	1	1			1	1	2	3	1	1	11	46	23.7%		
	5-24 years	0				1	2	1	1	0	1	6				
	25-49 years	1			1	2	1	1	1	1	0	8				
	50-64 years	1				1	1	1	4	2	0	10				
	65+ years	0			1	1	1	0	5	0	3	11				
Sussex County	0-4 years	2					1	2	3	1	0	9	57	29.4%		
	5-24 years	0		1		1	1	1	0	1	1	6				
	25-49 years	0					3	3	0	1	1	8				
	50-64 years	0		1	1	2	1	3	2	2	3	15				
	65+ years	2	1		1	1	3	7	2	1	1	19				



Total Flu-related Deaths in Delaware 2010 – 2011 Influenza Season	Wk40 thru Wk52	Wk01 thru Wk09	YTD
	0	4	4

Annual Seasonal Flu Case Totals	
2004	995
2005	541
2006	508
2007	1401
2008	738
2009-2010	2,247
2010-2011	1,235

* Based on patients with positive nucleic acid and viral culture test results reported to the Division of Public Health.

† Reports are by date of specimen collection, not the date the results are obtained. As a result, prior weeks may be adjusted to reflect additional cases.

§§ Confirmed Influenza cases from all reporting sources (including State Lab)

NOTE: The data provided may not be a true reflection of the total number of people who have been infected with influenza virus in Delaware, chiefly due to the following:

- Many people ill with influenza-like symptoms do not seek medical care; and
- Many who do seek medical care are not tested for influenza.

Level of Influenza Activity in Delaware, Week 09:

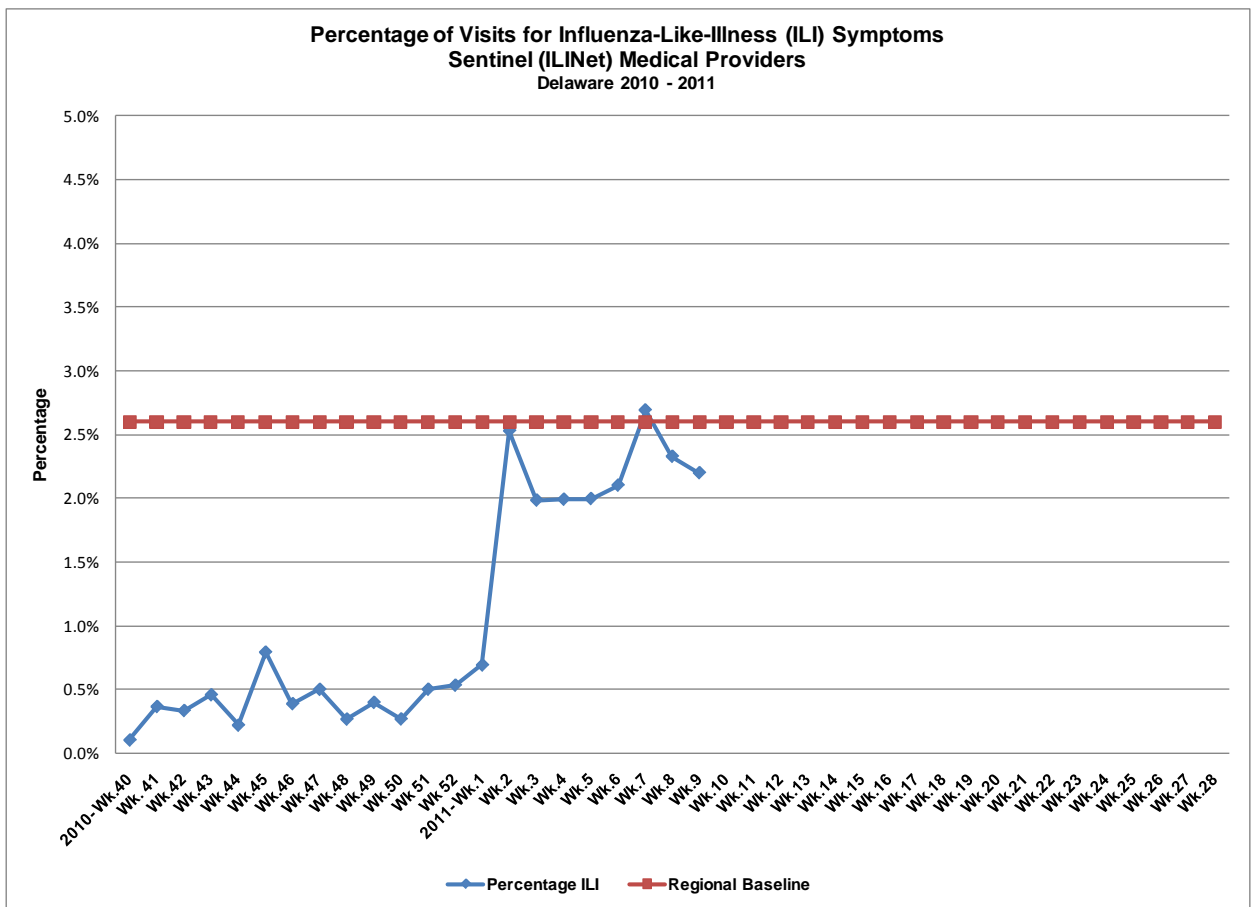
Widespread	➔ Increase in ILI reports above the regional baseline and/or institutional outbreaks of influenza (ILI or lab confirmed) AND recent (within the past 3 weeks) laboratory confirmed influenza in at least two of the three counties.
Influenza-like illness (ILI) is defined as patients presenting with fever over 100° F, cough and/or sore throat in the absence of a known cause other than influenza.	

- ➔ **No Activity:** No laboratory confirmed cases of influenza and no increase in the number of reports of ILI above regional baseline for the season.
- ➔ **Sporadic:** Isolated laboratory confirmed cases **OR** a laboratory confirmed outbreak in one institution but no increase in reports of ILI from the regional baseline for the season.
- ➔ **Local:** Increased ILI above the regional baseline for the season in a single county; ILI activity in other counties is not increased above baseline AND recent (within the past three weeks) laboratory evidence of influenza in the county with increased ILI **OR** two or more institutional outbreaks (ILI or laboratory confirmed flu) in a single county AND recent (within the past three weeks) laboratory evidence of influenza in the county with the outbreaks; virus activity is no greater than sporadic in other counties.
- ➔ **Regional:** Outbreaks of influenza or increases in ILI and recent laboratory confirmed influenza in at least 2 but less than half the regions of the state. (This level of activity does not apply for small states with 4 or fewer regions.)
- ➔ **Widespread:** Increase in ILI reports above the regional baseline and/or institutional outbreaks of influenza (ILI or lab confirmed) AND recent (within the past 3 weeks) laboratory confirmed influenza in at least two of the three counties.

ILINet (Sentinel) Provider Surveillance Network:

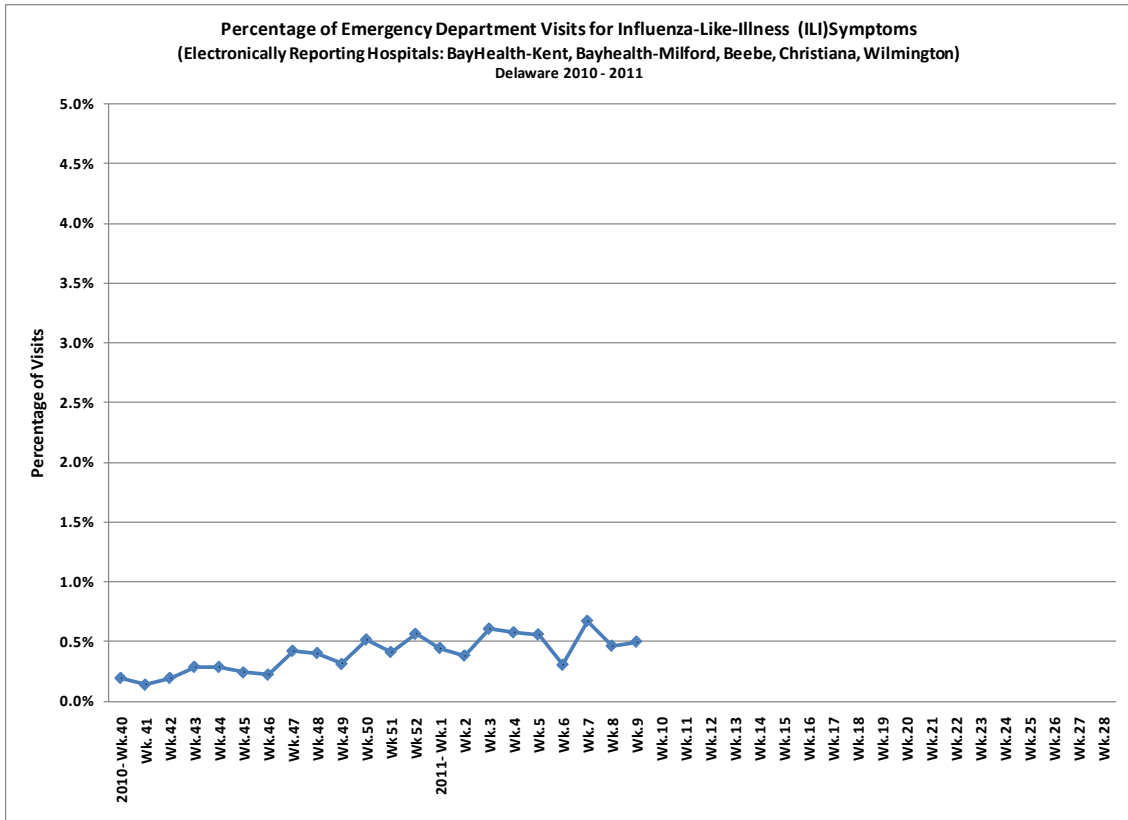
An ILINet (Sentinel) provider conducts surveillance for influenza-like illness (ILI) in collaboration with the state health department and the Centers for Disease Control and Prevention. Data reported by ILINet (Sentinel) providers, in combination with other influenza surveillance data, provide a national and statewide picture of influenza virus and ILI activity in the U.S.

**Influenza-like illness reported from ILINet (Sentinel) Providers
Delaware 2010-2011
11 of 17 Sentinels reporting**

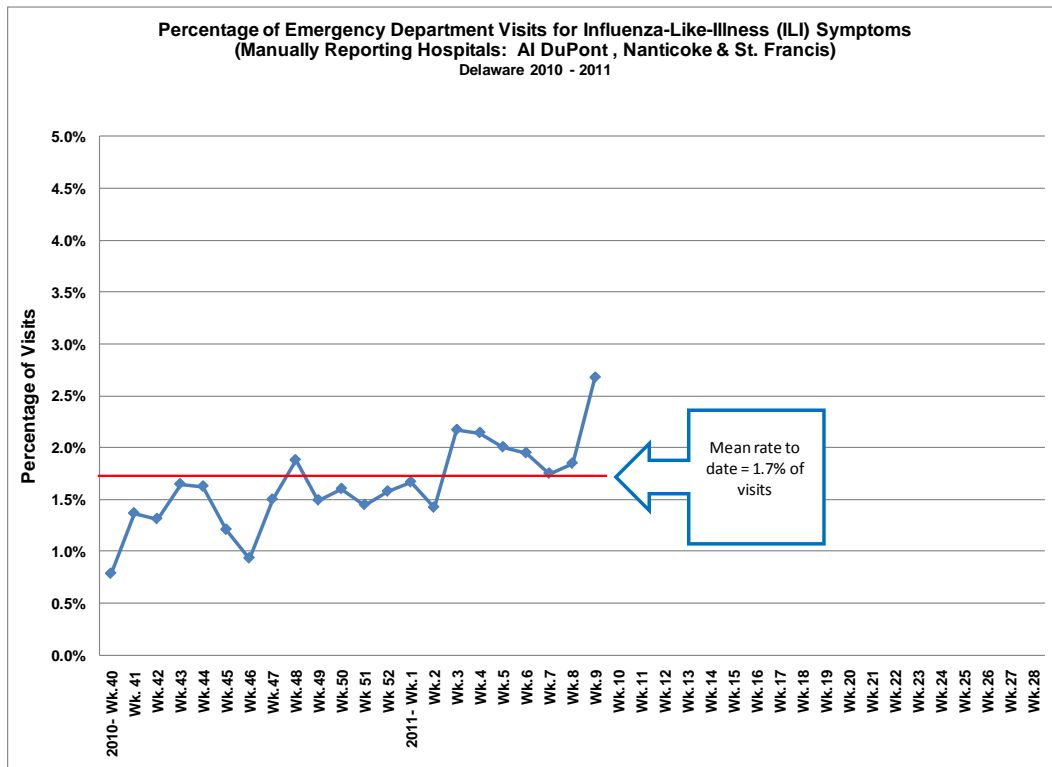


Regional Baseline for 2010-2011 applicable to: Region 3 (Delaware, District of Columbia, Maryland, Pennsylvania, Virginia & West Virginia); baseline= 2.6%.

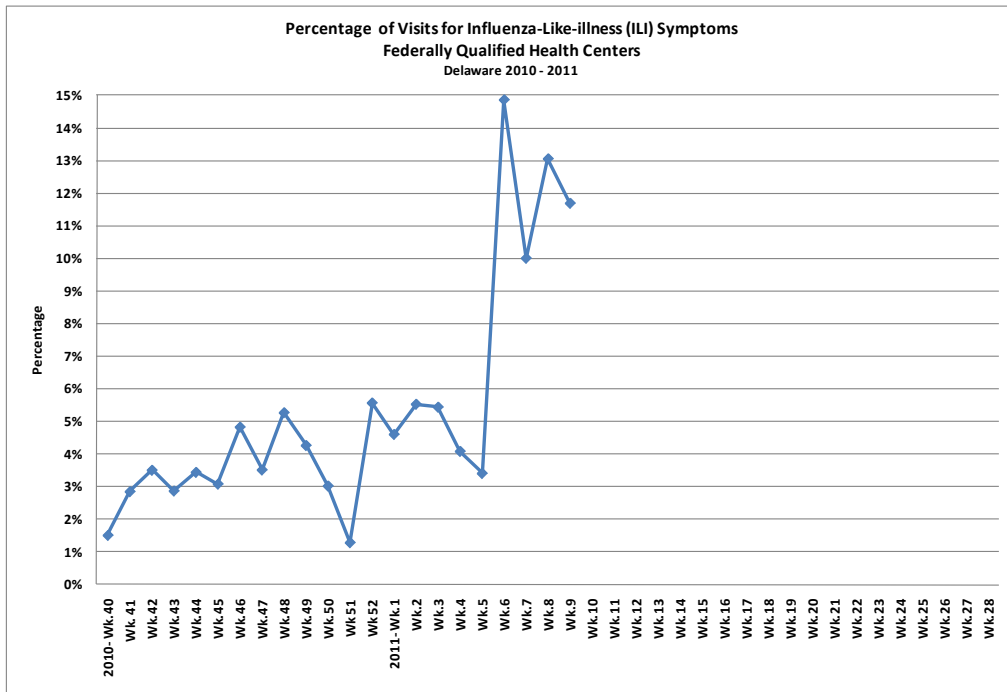
Hospital Electronic Surveillance Data: Delaware 2010-2011 5 of 5 hospitals reporting



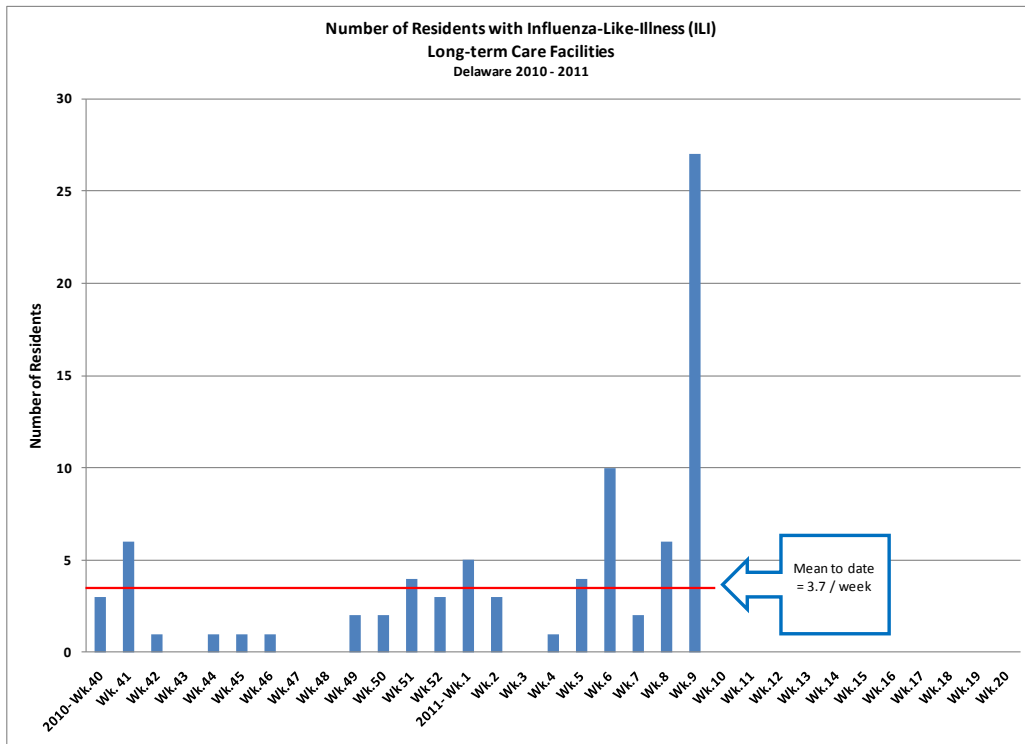
Hospital Manual Surveillance Data: Delaware 2010-2011 3 of 3 hospitals reporting



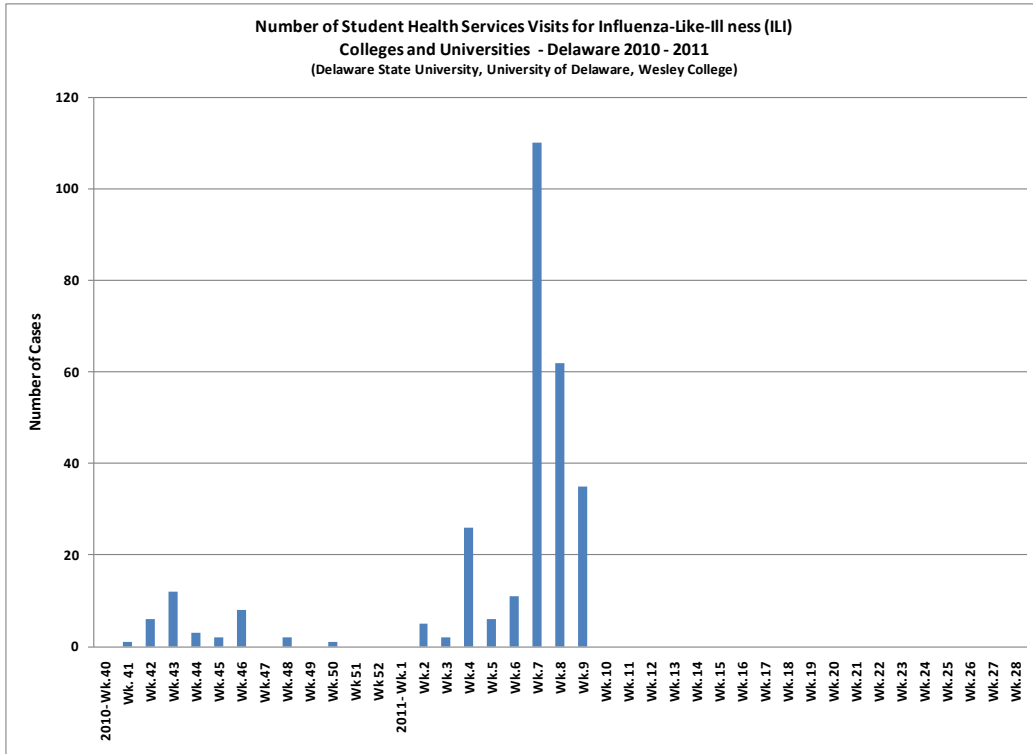
Influenza-like illness reported from Federally Qualified Health Centers (FQHCs):
 Delaware 2010-2011
 1 of 2 facilities reporting (Henrietta Johnson)



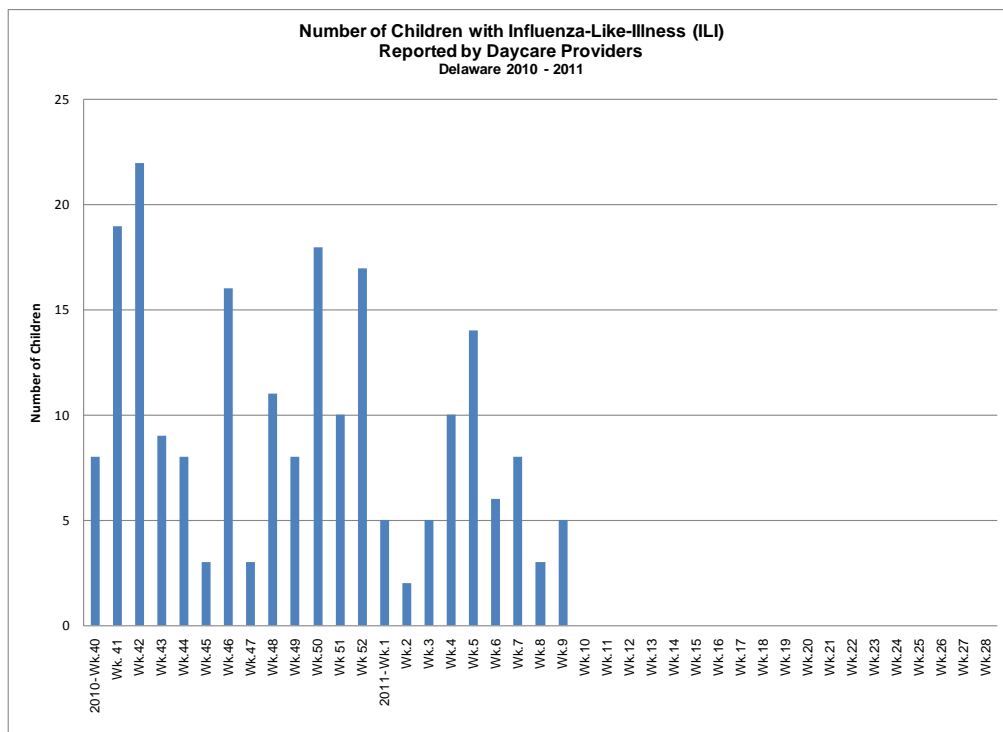
Influenza-like illness reported from Long-Term Care Facilities (LTCFs):
 Delaware 2010-2011
 8 of 19 facilities reporting



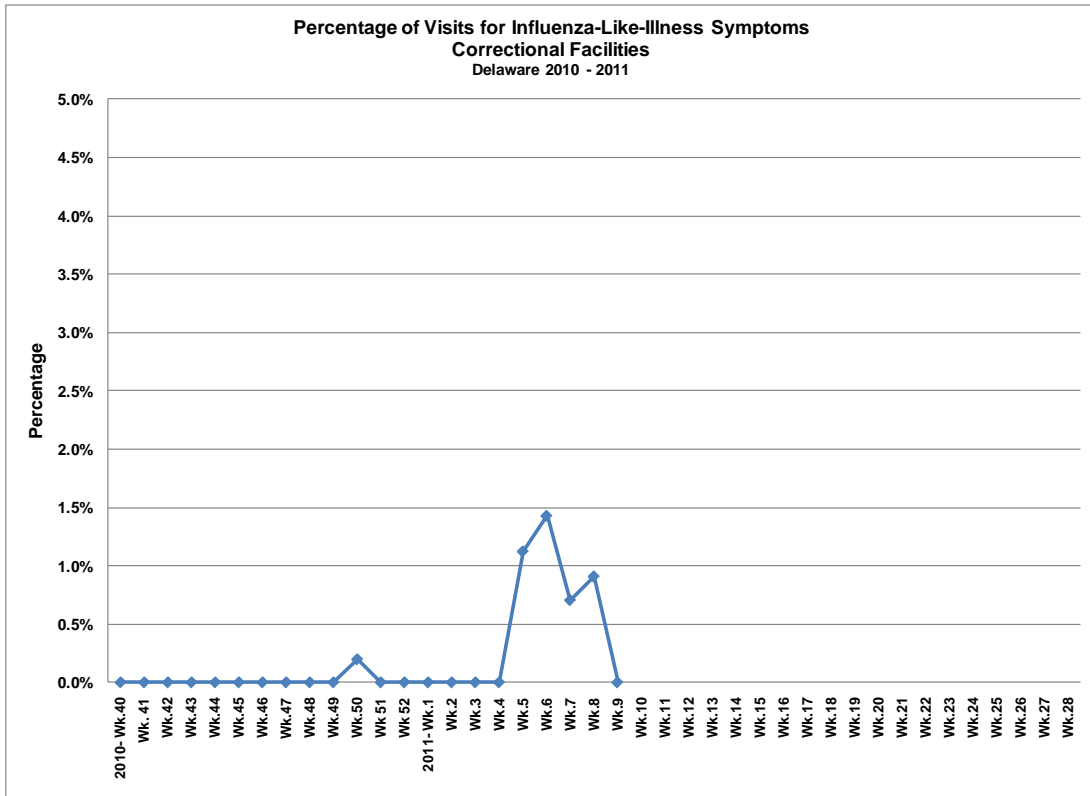
Influenza-like illness reported from Colleges/Universities: Delaware 2010-2011
Delaware 2010 – 2011
2 of 3 schools reporting (Delaware State University & University of Delaware)



Influenza-like illness reported from Daycare Providers: Delaware 2010-2011
4 of 13 providers reporting



**Influenza-like illness reported from DE Correctional Facilities:
Delaware 2010-2011
2 of 3 facilities reporting (Howard R. Young & Sussex Correctional)**



The Division of Public Health is committed to serving you better. If you have not found the answers to your questions, please visit flu.delaware.gov or call (302) 744-4704.