

2011 MEDICAL MONITORING PROJECT RESPONSE CARDS

RESPONSE CARD A

<u>Monthly Income</u>		<u>Yearly Income</u>	
a.	\$0 to \$417	a.	\$0 to \$4,999
b.	\$418 to \$833	b.	\$5,000 to \$9,999
c.	\$834 to \$1250	c.	\$10,000 to \$14,999
d.	\$1251 to \$1667	d.	\$15,000 to \$19,999
e.	\$1668 to \$2500	e.	\$20,000 to \$29,999
f.	\$2501 to \$3333	f.	\$30,000 to \$39,999
g.	\$3334 to \$4167	g.	\$40,000 to \$49,999
h.	\$4168 to \$6250	h.	\$50,000 to \$74,999
i.	\$6251 or more	i.	\$75,000 or more

RESPONSE CARD B

I asked them <u>not to tell any</u> of my partners
I asked them <u>to tell only some</u> of my partners
I asked them <u>to tell all</u> of my partners
I told them that I did not have any partners

RESPONSE CARD C

HIV case management services

Counseling about how to prevent the spread of HIV

Medicine through the AIDS Drug Assistance Program (ADAP)

Professional help remembering to take your HIV medicines on time or correctly

HIV peer group support

Dental care

Mental health services

Drug or alcohol counseling or treatment

Public benefits including Supplemental Security Income (SSI) or Social Security Disability Insurance (SSDI)

Domestic violence services

Shelter or housing services

Meal or food services

Home health services

Transportation assistance

Childcare services

Interpreter services

Other HIV-related services

RESPONSE CARD D

Always

Most of the time

About half of the time

Rarely

Never

RESPONSE CARD E

Never Rarely About half of the time Most of the time Always

RESPONSE CARD E-1

Never
Rarely
About half of the time
Most of the time
Always
Been on medications less than 30 days

RESPONSE CARD F

Within the past **week**

1–2 **weeks** ago

3–4 **weeks** ago

1–3 **months** ago

More than 3 **months** ago

Never skip medicines

RESPONSE CARD G

Not at all sure	Somewhat sure	Very sure	Extremely sure
<input type="checkbox"/>	<input type="checkbox"/>	<input type="checkbox"/>	<input type="checkbox"/>
0	1	2	3

RESPONSE CARD H

Very dissatisfied	Somewhat dissatisfied	Somewhat satisfied	Very satisfied
<input type="checkbox"/>	<input type="checkbox"/>	<input type="checkbox"/>	<input type="checkbox"/>
0	1	2	3

RESPONSE CARD I

Not at all	A little	Somewhat	A lot
<input type="checkbox"/>	<input type="checkbox"/>	<input type="checkbox"/>	<input type="checkbox"/>
0	1	2	3

RESPONSE CARD J

Daily	Weekly	Monthly	Less than Monthly	Never
-------	--------	---------	-------------------	-------

ALCOHOL RESPONSE CARD



RESPONSE CARD K

Not at all

Several days

More than half the days

Nearly every day

RESPONSE CARD L

0–49

50–99

100–199

200–349

350–499

500 or more

RESPONSE CARD M

Below the level of detection, undetectable

Detectable but less than 5,000 viral copies/ml

5,000 to 100,000 viral copies/m

Greater than 100,000 viral copies/ml

RESPONSE CARD N

Strongly disagree...Somewhat disagree...Neutral/no opinion...Somewhat agree...Strongly agree

2010 CALENDAR

January

Su	Mo	Tu	We	Th	Fr	Sa
					1	2
3	4	5	6	7	8	9
10	11	12	13	14	15	16
17	18	19	20	21	22	23
24	25	26	27	28	29	30
31						

February

Su	Mo	Tu	We	Th	Fr	Sa
	1	2	3	4	5	6
7	8	9	10	11	12	13
14	15	16	17	18	19	20
21	22	23	24	25	26	27
28						

March

Su	Mo	Tu	We	Th	Fr	Sa
	1	2	3	4	5	6
7	8	9	10	11	12	13
14	15	16	17	18	19	20
21	22	23	24	25	26	27
28	29	30	31			

April

Su	Mo	Tu	We	Th	Fr	Sa
				1	2	3
4	5	6	7	8	9	10
11	12	13	14	15	16	17
18	19	20	21	22	23	24
25	26	27	28	29	30	

May

Su	Mo	Tu	We	Th	Fr	Sa
						1
2	3	4	5	6	7	8
9	10	11	12	13	14	15
16	17	18	19	20	21	22
23	24	25	26	27	28	29
30	31					

June

Su	Mo	Tu	We	Th	Fr	Sa
			1	2	3	4
5	6	7	8	9	10	11
12	13	14	15	16	17	18
19	20	21	22	23	24	25
26	27	28	29	30		

July

Su	Mo	Tu	We	Th	Fr	Sa
				1	2	3
4	5	6	7	8	9	10
11	12	13	14	15	16	17
18	19	20	21	22	23	24
25	26	27	28	29	30	31

August

Su	Mo	Tu	We	Th	Fr	Sa
1	2	3	4	5	6	7
8	9	10	11	12	13	14
15	16	17	18	19	20	21
22	23	24	25	26	27	28
29	30	31				

September

Su	Mo	Tu	We	Th	Fr	Sa
			1	2	3	4
5	6	7	8	9	10	11
12	13	14	15	16	17	18
19	20	21	22	23	24	25
26	27	28	29	30		

October

Su	Mo	Tu	We	Th	Fr	Sa
					1	2
3	4	5	6	7	8	9
10	11	12	13	14	15	16
17	18	19	20	21	22	23
24	25	26	27	28	29	30
31						

November

Su	Mo	Tu	We	Th	Fr	Sa
	1	2	3	4	5	6
7	8	9	10	11	12	13
14	15	16	17	18	19	20
21	22	23	24	25	26	27
28	29	30				

December

Su	Mo	Tu	We	Th	Fr	Sa
			1	2	3	4
5	6	7	8	9	10	11
12	13	14	15	16	17	18
19	20	21	22	23	24	25
26	27	28	29	30	31	

2011 CALENDAR

January

Su	Mo	Tu	We	Th	Fr	Sa
						1
2	3	4	5	6	7	8
9	10	11	12	13	14	15
16	17	18	19	20	21	22
23	24	25	26	27	28	29
30	31					

February

Su	Mo	Tu	We	Th	Fr	Sa
		1	2	3	4	5
6	7	8	9	10	11	12
13	14	15	16	17	18	19
20	21	22	23	24	25	26
27	28					

March

Su	Mo	Tu	We	Th	Fr	Sa
		1	2	3	4	5
6	7	8	9	10	11	12
13	14	15	16	17	18	19
20	21	22	23	24	25	26
27	28	29	30	31		

April

Su	Mo	Tu	We	Th	Fr	Sa
					1	2
3	4	5	6	7	8	9
10	11	12	13	14	15	16
17	18	19	20	21	22	23
24	25	26	27	28	29	30

May

Su	Mo	Tu	We	Th	Fr	Sa
1	2	3	4	5	6	7
8	9	10	11	12	13	14
15	16	17	18	19	20	21
22	23	24	25	26	27	28
29	30	31				

June

Su	Mo	Tu	We	Th	Fr	Sa
			1	2	3	4
5	6	7	8	9	10	11
12	13	14	15	16	17	18
19	20	21	22	23	24	25
26	27	28	29	30		

July

Su	Mo	Tu	We	Th	Fr	Sa
					1	2
3	4	5	6	7	8	9
10	11	12	13	14	15	16
17	18	19	20	21	22	23
24	25	26	27	28	29	30
31						

August

Su	Mo	Tu	We	Th	Fr	Sa
	1	2	3	4	5	6
7	8	9	10	11	12	13
14	15	16	17	18	19	20
21	22	23	24	25	26	27
28	29	30	31			

September

Su	Mo	Tu	We	Th	Fr	Sa
				1	2	3
4	5	6	7	8	9	10
11	12	13	14	15	16	17
18	19	20	21	22	23	24
25	26	27	28	29	30	

October

Su	Mo	Tu	We	Th	Fr	Sa
						1
2	3	4	5	6	7	8
9	10	11	12	13	14	15
16	17	18	19	20	21	22
23	24	25	26	27	28	29
30	31					

November

Su	Mo	Tu	We	Th	Fr	Sa
		1	2	3	4	5
6	7	8	9	10	11	12
13	14	15	16	17	18	19
20	21	22	23	24	25	26
27	28	29	30			

December

Su	Mo	Tu	We	Th	Fr	Sa
				1	2	3
4	5	6	7	8	9	10
11	12	13	14	15	16	17
18	19	20	21	22	23	24
25	26	27	28	29	30	31

Nucleoside Analogue Combinations (Combination Treatments)

Combivir
(zidovudine/
lamivudine)



Trizivir
(abacavir/
lamivudine/
zidovudine)



Epzicom
(abacavir/
lamivudine)



Truvada
(tenofovir DF/
emtricitabine)



Atripla
(efavirenz/
emtricitabine/
tenofovir DF)



Nucleoside/Nucleotide Analogue Reverse Transcriptase Inhibitors (NRTIs or Nukes)

EpiVir
(lamivudine
or 3TC)



Videx, Videx EC
(didanosine
or ddI)



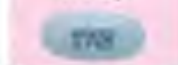
Emtriva
(emtricitabine
or FTC)



Viread
(tenofovir DF
or TDF)



Hivid*
(zalcitabine,
ddC)



* Discontinued medication

Zerit
(stavudine or d4T)



Retrovir
(zidovudine
ZDV or AZT)



Ziagen
(abacavir
or ABC)



Protease Inhibitors (PIs)

Agenerase*
(amprenavir, APV)



Invirase
(saquinavir or SQV)



Kaletra
(lopinavir/ritonavir)



Crixivan
(indinavir or IDV)



Lexiva
(fosamprenavir or 908)



Reyataz
(atazanavir or ATV)



Fortovase*
(saquinavir soft gel capsule, SQV)



Norvir
(ritonavir or RTV)



Viracept
(nelfinavir or NFV)



Aptivus
(tipranavir or TPV)



Prezista
(darunavir or DRV)



* Discontinued medications

Non-Nucleoside Reverse Transcriptase Inhibitors (NNRTIs or Non-Nukes)

Rescriptor
(delavirdine or DLV)



Viramune
(nevirapine or NVP)



Sustiva
(efavirenz or EFV)



Intence
(etravirine or ETV)



Entry/Fusion Inhibitors

Fuzeon
(enfuvirtide or T20)



Selzentry
(maraviroc or MVC)



Integrase Inhibitors

Isentress
(raltegravir or RAL)

