

Delaware Vital Statistics Annual Report

Population, 2010



Suggested Citation:

Delaware Health Statistics Center. *Delaware Vital Statistics Annual Report, 2010*.
Delaware Department of Health and Social Services, Division of Public Health: 2013.

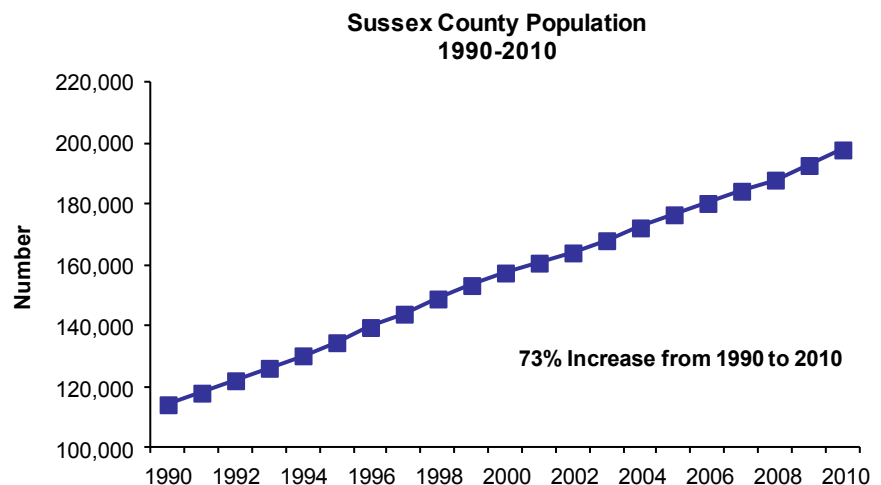
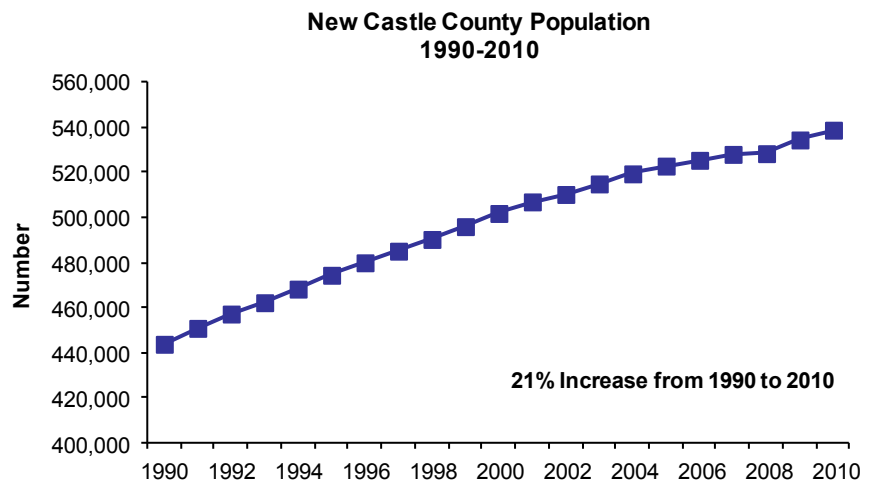
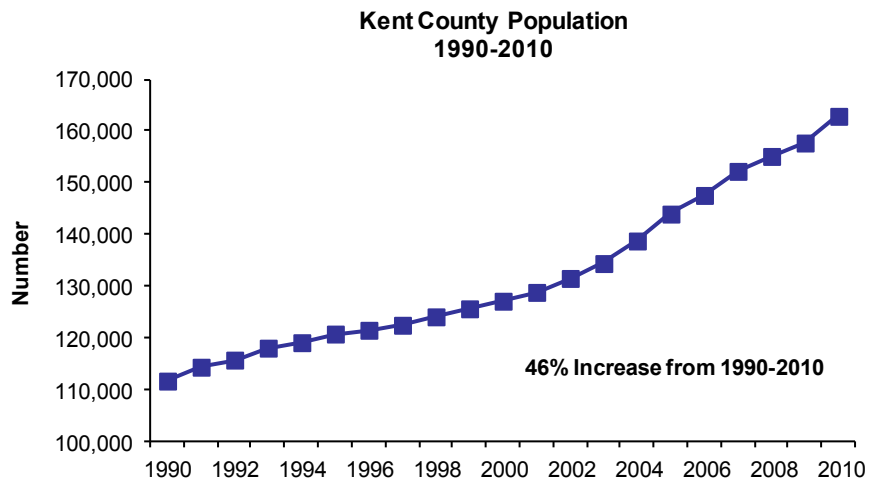
Intentionally left blank

POPULATION

Delaware's three counties continued their increasing population trend, though they grew at different rates. Between 2000 and 2010, county populations grew annually by 2.8 percent for Kent, 0.7 percent for New Castle, and 2.6 percent for Sussex. Delaware's statewide increase was 1.4 percent.

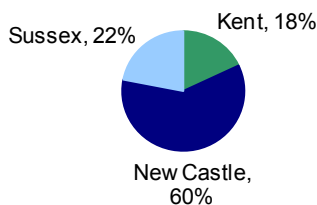
In 2010, more than half of Delaware's 65 and older population resided in New Castle County. However, residents 65 and older represented a much larger proportion of the Sussex County population, where 1 in 5 residents was 65 or older, versus New Castle and Kent counties, where approximately 1 in 8 residents was 65 or older.

Delaware Resident Population by County, 1990-2010



Over half of Delaware's total population resides in New Castle County.

Percent of Population by County Delaware, 2010

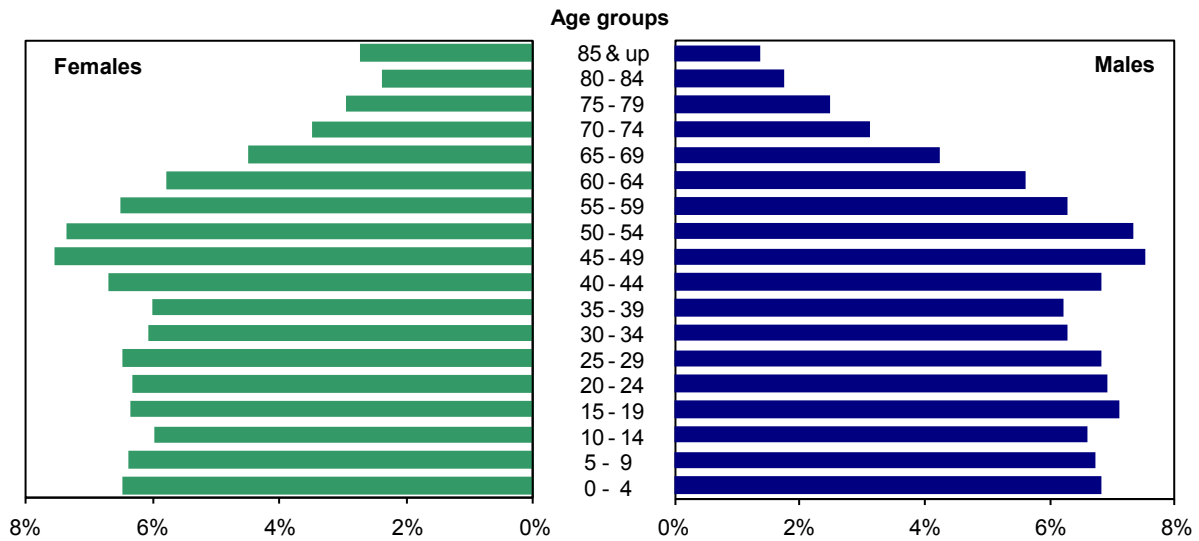


Source: Delaware Health Statistics Center

Source: Delaware Health Statistics Center

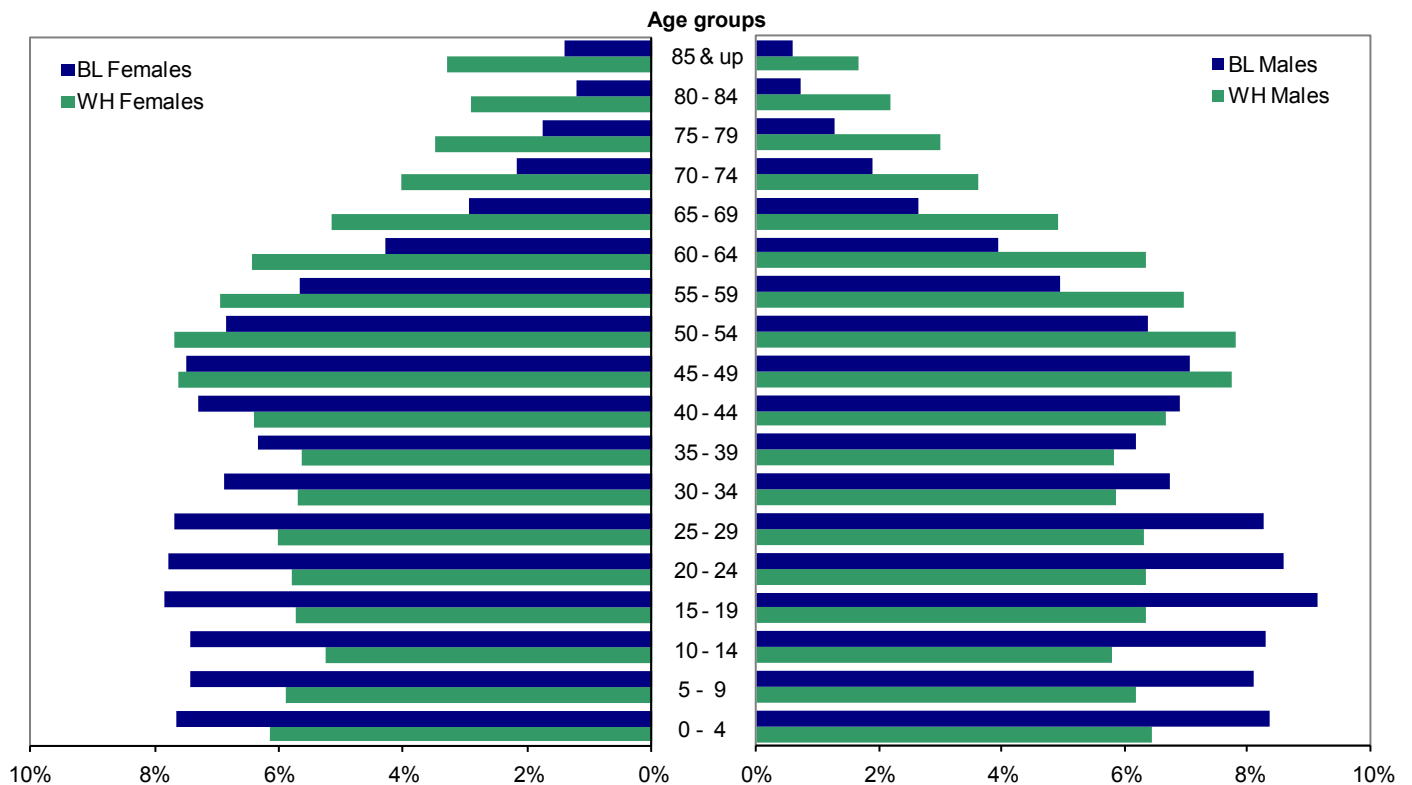
POPULATION

In 2010, just over 50 percent of Delaware's population was female. Females made up a greater proportion of the older age groups, which reflects the longer female life expectancy. Delaware females born in 2010 could expect to live an average of 81.7 years, versus males, who could expect to live 76.4 years.



Source: Delaware Health Statistics Center

When the population was broken down by race, the higher proportion of females in the older age groups appeared in the black population as well. However, both black males and females had a greater percentage of their population in the 0-44 year age range than whites; in the 45 and above age range, whites made up a greater proportion of the population.



Source: Delaware Health Statistics Center

TABLE A-1
PERCENT CHANGE IN POPULATION BY SEX

DELAWARE, COUNTIES, CITY OF DOVER, CITY OF NEWARK, AND CITY OF WILMINGTON, 1970-2020

Area/ Sex	1970	1980	% Change 1970-1980	1990	% Change 1980-1990	2000	% Change 1990-2000	2010	% Change 2000-2010	2020*	% Change 2010-2020	% Change 2000-2020
Delaware	548104	594338	8.4	666168	12.1	786393	18.0	899773	14.4	989170	9.9	25.8
Male	267332	286599	7.2	322966	12.7	381690	18.2	437346	14.6	481410	10.1	26.1
Female	280772	307739	9.6	343202	11.5	404703	17.9	462427	14.3	507760	9.8	25.5
Kent	81892	98219	19.9	110993	13.0	127230	14.6	162916	28.0	180357	10.7	41.8
Male	41337	48254	16.7	54300	12.5	61325	12.9	78394	27.8	86714	10.6	41.4
Female	40555	49965	23.2	56693	13.5	65905	16.2	84522	28.2	93643	10.8	42.1
Dover	17488	23512	34.4	27630	17.5	32135	16.3	36063	12.2	40475	12.2	26.0
Male	8319	11695	40.6	13408	14.6	15114	12.7	16798	11.1	18606	10.8	23.1
Female	9169	11817	28.9	14222	20.4	17021	19.7	19266	13.2	21869	13.5	28.5
New Castle	385856	398115	3.2	441946	11.0	501846	13.6	538987	7.4	573239	6.4	14.2
Male	187124	191176	2.2	213869	11.9	243587	13.9	262091	7.6	278844	6.4	14.5
Female	198732	206939	4.1	228077	10.2	258259	13.2	276896	7.2	294395	6.3	14.0
Newark	20757	25247	21.6	26463	4.8	28457	7.5	31465	10.6	34790	10.6	22.3
Male	10242	11993	17.1	12408	3.5	13085	5.5	14695	12.3	16251	10.6	24.2
Female	10515	13254	26.0	14055	6.0	15372	9.4	16770	9.1	18539	10.5	20.6
Wilmington	80386	70195	-12.7	71529	1.9	72730	1.7	70839	-2.6	69634	-1.7	-4.3
Male	36968	31458	-14.9	33249	5.7	34759	4.5	34568	-0.5	34461	-0.3	-0.9
Female	43418	38737	-10.8	38280	-1.2	37971	-0.8	36271	-4.5	35173	-3.0	-7.4
Sussex	80356	98004	22.0	113229	15.5	157317	38.9	197870	25.8	235574	19.1	49.7
Male	38871	47169	21.3	54797	16.2	76778	40.1	96861	26.2	115852	19.6	50.9
Female	41485	50835	22.5	58432	14.9	80539	37.8	101009	25.4	119722	18.5	48.7

Note:

*Numbers for this year are projections.

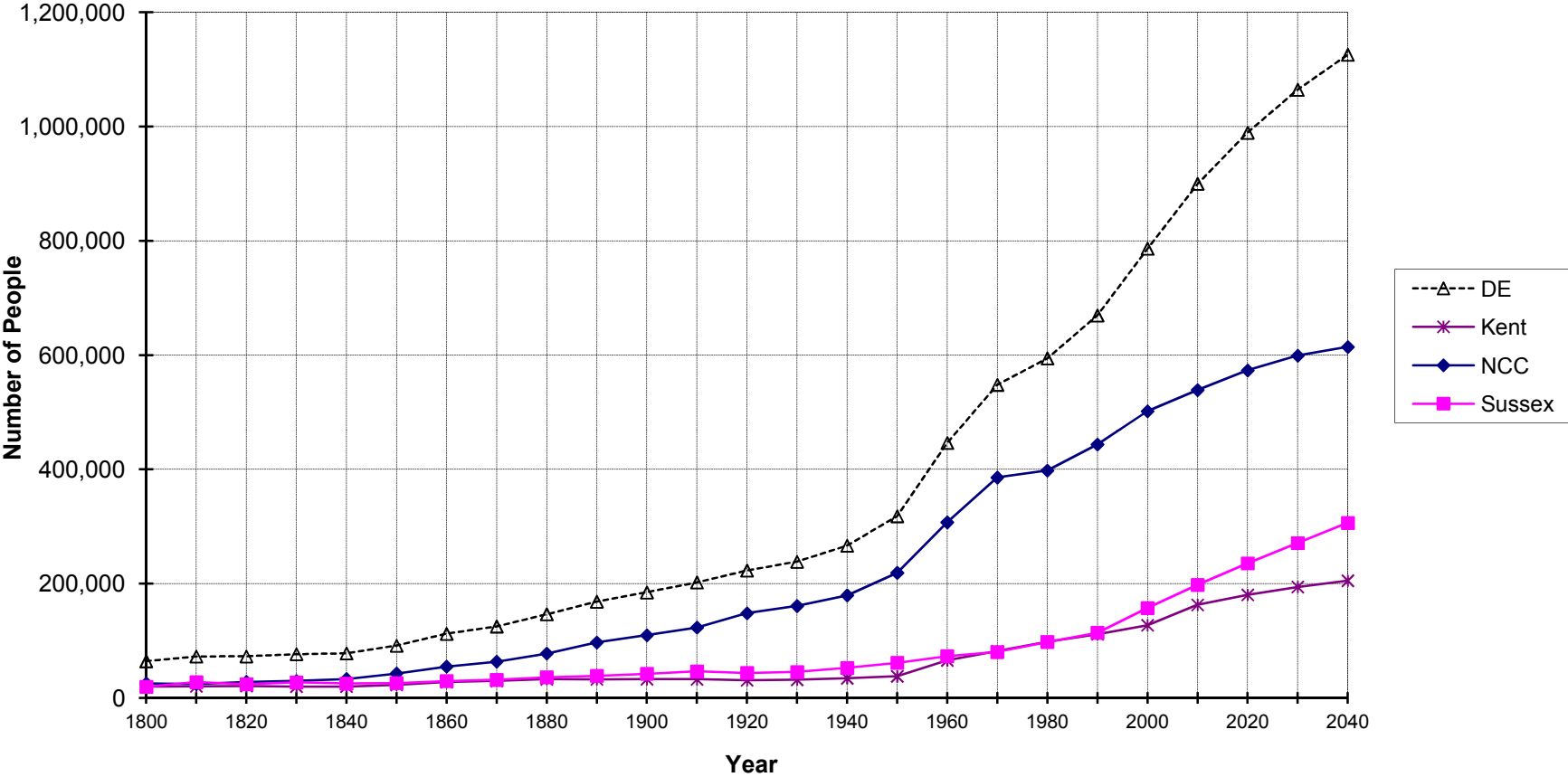
Sources:

Delaware Health Statistics Center
Delaware Population Consortium
U.S. Bureau of the Census

POPSEX

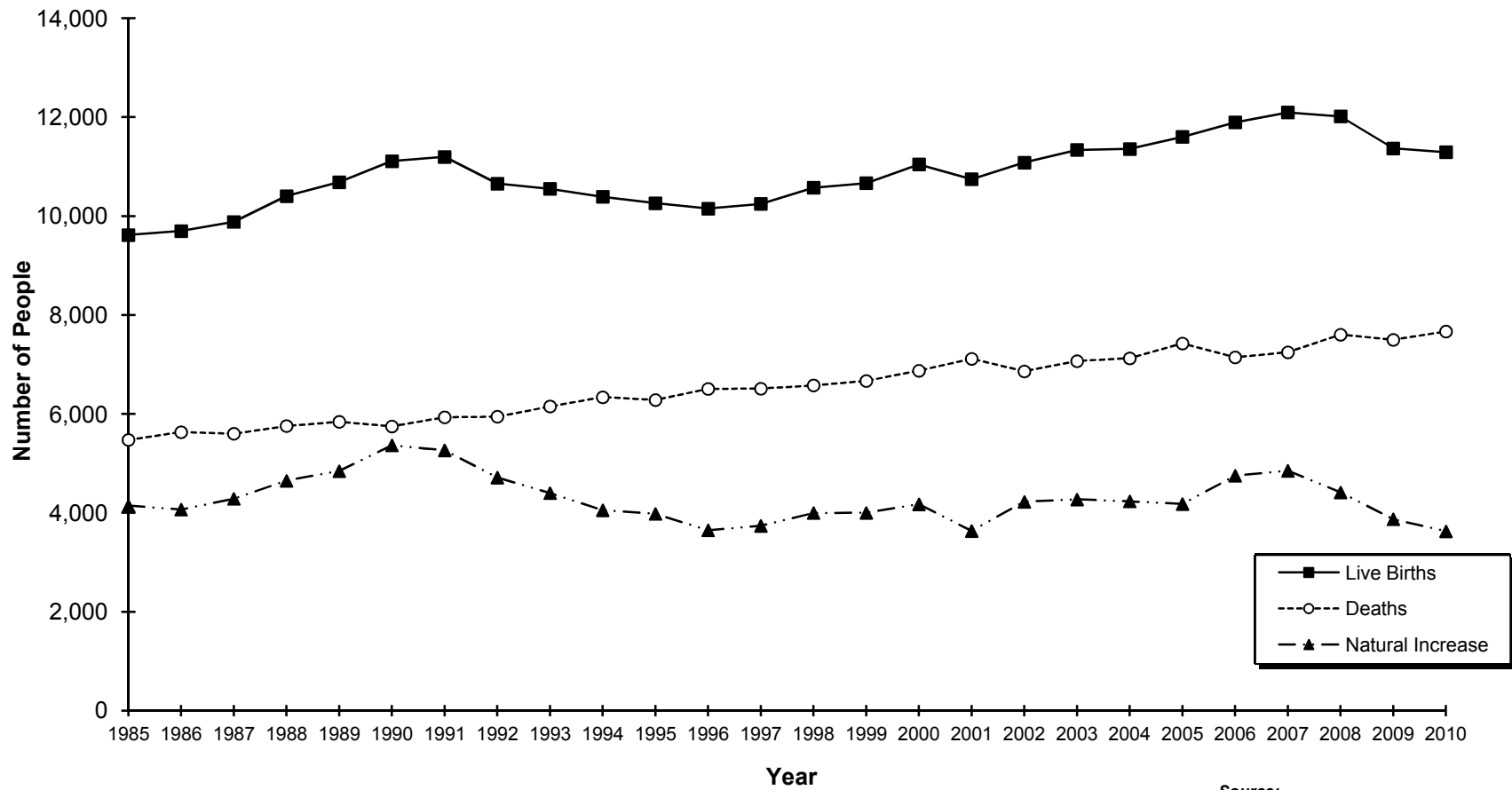
Figure A-1 Population Growth

Delaware and Counties, 1800-2040



Sources:
Delaware Health Statistics Center
Delaware Population Consortium

Figure A-2
Live Births, Deaths, and Natural Increase
Delaware, 1985-2010



Source:
 Delaware Health Statistics Center

TABLE A-2
POPULATION ESTIMATES BY SEX, RACE AND AGE

DELAWARE, COUNTIES, CITY OF DOVER, CITY OF NEWARK, AND CITY OF WILMINGTON, 2010

Area/ Sex/Race	Age																		
	Total	0-4	5-9	10-14	15-19	20-24	25-29	30-34	35-39	40-44	45-49	50-54	55-59	60-64	65-69	70-74	75-79	80-84	85+
Delaware	899773	59757	58880	56416	60439	59530	59866	55617	54927	60756	67804	66038	57591	51291	39270	29732	24585	18722	18552
Male	437346	29825	29422	28826	31097	30242	29862	27496	27132	29787	32967	32038	27518	24523	18491	13610	10869	7672	5969
White	314757	20291	19454	18257	19919	19955	19840	18429	18368	21039	24386	24614	21878	19984	15484	11370	9397	6826	5266
Black	93643	7828	7585	7774	8544	8042	7728	6305	5793	6446	6624	5984	4634	3695	2458	1760	1192	686	565
Female	462427	29932	29458	27590	29342	29288	30004	28121	27795	30969	34837	34000	30073	26768	20779	16122	13716	11050	12583
White	331857	20338	19487	17373	19045	19162	19961	18854	18711	21282	25241	25510	23033	21340	17065	13361	11544	9594	10956
Black	103142	7895	7646	7654	8093	8011	7921	7093	6530	7515	7740	7075	5843	4424	3015	2224	1790	1229	1444
Kent	162916	11346	11221	11144	11757	12154	11896	10472	9781	10806	12466	11689	9408	8323	6249	4913	4057	2739	2495
Male	78394	5664	5600	5620	6055	6115	5854	5113	4583	5249	5964	5575	4399	3939	2892	2180	1796	1063	733
White	54891	3889	3805	3639	3968	4058	3694	3257	3183	3751	4367	4161	3326	2997	2259	1684	1402	872	579
Black	18875	1557	1534	1541	1738	1671	1836	1454	1012	1118	1187	1087	887	752	522	390	309	153	127
Female	84522	5682	5621	5524	5702	6039	6042	5359	5198	5557	6502	6114	5009	4384	3357	2733	2261	1676	1762
White	58160	3891	3806	3509	3785	4027	3768	3154	3451	3849	4596	4367	3581	3214	2546	2117	1718	1352	1429
Black	21028	1573	1553	1611	1538	1646	1951	1830	1286	1302	1439	1361	1099	887	599	447	397	234	275
Dover	36063	2424	2212	2098	3199	3885	2590	2107	1887	2067	2437	2422	1998	1711	1397	1128	1055	735	713
Male	16798	1226	1169	1008	1551	1880	1228	987	850	975	1069	1138	889	787	643	465	404	306	223
Female	19266	1198	1043	1090	1647	2005	1362	1121	1037	1091	1367	1284	1109	924	754	663	651	429	490
New Castle	538987	36195	36169	35005	37813	36333	37220	36206	35315	38717	41364	39416	33525	28429	20750	14774	12083	9539	10134
Male	262091	18049	18051	17958	19393	18588	18453	17739	17640	18964	20227	19201	15969	13465	9644	6721	5155	3757	3117
White	180369	11611	11587	10901	11935	11791	12051	11856	11511	12892	14392	14182	12131	10398	7647	5261	4283	3248	2692
Black	62357	5140	5024	5183	5680	5265	4831	4052	4111	4516	4551	4104	3159	2518	1626	1144	711	410	332
Female	276896	18146	18118	17047	17745	17745	18767	18467	17675	19753	21137	20215	17556	14964	11106	8053	6928	5782	7017
White	190010	11663	11646	10281	11478	11050	12329	12514	11373	12887	14630	14527	12809	11332	8682	6282	5636	4893	5998
Black	68759	5189	5061	5074	5468	5229	4937	4468	4582	5334	5343	4807	3999	2993	2022	1461	1106	770	916
Newark	31465	897	1006	1102	6183	8618	1928	1289	1004	1185	1544	1582	1345	1107	850	585	509	409	325
Male	14695	464	536	560	2393	4146	1065	684	492	599	762	771	634	537	365	239	211	153	87
Female	16770	433	470	542	3789	4471	864	606	512	586	783	812	712	570	485	346	298	256	238
Wilmington*	70839	5672	5083	4275	5038	5321	5661	5330	5195	4838	4763	4572	3979	3296	2386	1712	1398	1072	1248
Male	34568	2895	2609	2245	2573	2687	2888	2768	2654	2435	2398	2232	1872	1474	1021	680	507	331	299
White	12276	846	770	462	526	805	1101	1168	1230	897	823	840	739	658	488	287	245	195	196
Black	19376	1787	1621	1540	1771	1602	1446	1288	1200	1344	1423	1287	1027	728	482	356	247	128	99
Female	36271	2777	2474	2030	2465	2634	2773	2562	2541	2403	2365	2340	2107	1822	1365	1032	891	741	949
White	12229	797	699	398	441	706	980	949	1025	711	670	739	807	780	617	438	415	435	622
Black	21366	1730	1569	1456	1775	1662	1487	1409	1285	1507	1550	1493	1188	959	692	551	453	286	314
Sussex	197870	12216	11490	10267	10869	11043	10750	8939	9831	11233	13974	14933	14658	14539	12271	10045	8445	6444	5923
Male	96861	6112	5771	5248	5649	5539	5555	4644	4909	5574	6776	7262	7150	7119	5955	4709	3918	2852	2119
White	79497	4791	4062	3717	4016	4106	4095	3316	3674	4396	5627	6271	6421	6589	5578	4425	3712	2706	1995
Black	12411	1131	1027	1050	1126	1106	1061	799	670	812	886	793	588	425	310	226	172	123	106
Female	101009	6104	5719	5019	5220	5504	5195	4295	4922	5659	7198	7671	7508	7420	6316	5336	4527	3592	3804
White	83687	4784	4035	3583	3782	4085	3864	3186	3887	4546	6015	6616	6643	6794	5837	4962	4190	3349	3529
Black	13355	1133	1032	969	1087	1136	1033	795	662	879	958	907	745	544	394	316	287	225	253

Sources:
Delaware Health Statistics Center
Delaware Population Consortium

POPSRA