

The background of the page is filled with a pattern of parallel, diagonal grey lines. These lines are spaced evenly and run from the top-left towards the bottom-right, creating a textured, grid-like appearance.

Population

2004

BLANK

Population Highlights

<u>Key Indicators</u>	<u>Period</u>	<u>Delaware</u>	<u>Recent Trend in Delaware*</u>	<u>Projected Trend in Delaware**</u>
Population • Total resident population (See Table A-2)	2004	830,566	Increasing	Increasing
65 and Over Population • Resident population 65 years of age or older (See Table A-2)	2004	114,540	Increasing	Increasing
75 and Over Population • Resident population 75 years of age or older (See Table A-2)	2004	54,523	Increasing	Increasing

* Trend since 1990.
** Projected trend to 2020.

Key Facts

- Sussex County had the highest percentage of residents 65 years of age and older among the three counties at 19.3% in 2004 (see Table A-2).
- Kent County had the highest percentage of black residents among the three counties at 23.9% in 2004 (see Table A-2).
- The New Castle County population accounted for 63% of the total state population in 2004 (see Table A-2).

For more detailed population information, see the Delaware Population Consortium's website at: http://www.state.de.us/planning/information/dpc_projections.shtml.

BLANK

TABLE A-1
PERCENT CHANGE IN POPULATION BY SEX

DELAWARE, COUNTIES, CITY OF DOVER, CITY OF NEWARK, AND CITY OF WILMINGTON, 1970-2020

Area/ Sex	1970	1980	% Change 1970-1980	1990	% Change 1980-1990	2000	% Change 1990-2000	2010*	% Change 2000-2010	2020*	% Change 2010-2020	% Change 2000-2020
Delaware	548104	594338	8.4	666168	12.1	786448	18.1	887875	12.9	971590	9.4	23.5
Male	267332	286599	7.2	322966	12.7	381914	18.3	428942	12.3	468009	9.1	22.5
Female	280772	307739	9.6	343202	11.5	404534	17.9	458933	13.4	503581	9.7	24.5
Kent	81892	98219	19.9	110993	13.0	127085	14.5	150231	18.2	166913	11.1	31.3
Male	41337	48254	16.7	54300	12.5	61256	12.8	69725	13.8	76269	9.4	24.5
Female	40555	49965	23.2	56693	13.5	65829	16.1	80506	22.3	90644	12.6	37.7
Dover	17488	23512	34.4	27630	17.5	32271	16.8	34499	6.9	36459	5.7	13.0
Male	8319	11695	40.6	13408	14.6	15178	13.2	16069	5.9	16760	4.3	10.4
Female	9169	11817	28.9	14222	20.4	17093	20.2	18430	7.8	19699	6.9	15.2
New Castle	385856	398115	3.2	441946	11.0	501933	13.6	543908	8.4	578256	6.3	15.2
Male	187124	191176	2.2	213869	11.9	243750	14.0	264186	8.4	280545	6.2	15.1
Female	198732	206939	4.1	228077	10.2	258183	13.2	279722	8.3	297711	6.4	15.3
Newark	20757	25247	21.6	26463	4.8	29300	10.7	31478	7.4	31864	1.2	8.8
Male	10242	11993	17.1	12408	3.5	13472	8.6	14701	9.1	14884	1.2	10.5
Female	10515	13254	26.0	14055	6.0	15828	12.6	16777	6.0	16980	1.2	7.3
Wilmington	80386	70195		71529	1.9	72664	1.6	71727	-1.3	70445	-1.8	-3.1
Male	36968	31458	-14.9	33249	5.7	34674	4.3	34950	0.8	34777	-0.5	0.3
Female	43418	38737	-10.8	38280	-1.2	37990	-0.8	36777	-3.2	35668	-3.0	-6.1
Sussex	80356	98004	22.0	113229	15.5	157430	39.0	193736	23.1	226421	16.9	43.8
Male	38871	47169	21.3	54797	16.2	76908	40.4	95031	23.6	111195	17.0	44.6
Female	41485	50835	22.5	58432	14.9	80522	37.8	98705	22.6	115226	16.7	43.1

Note:

*Numbers for this year are projections.

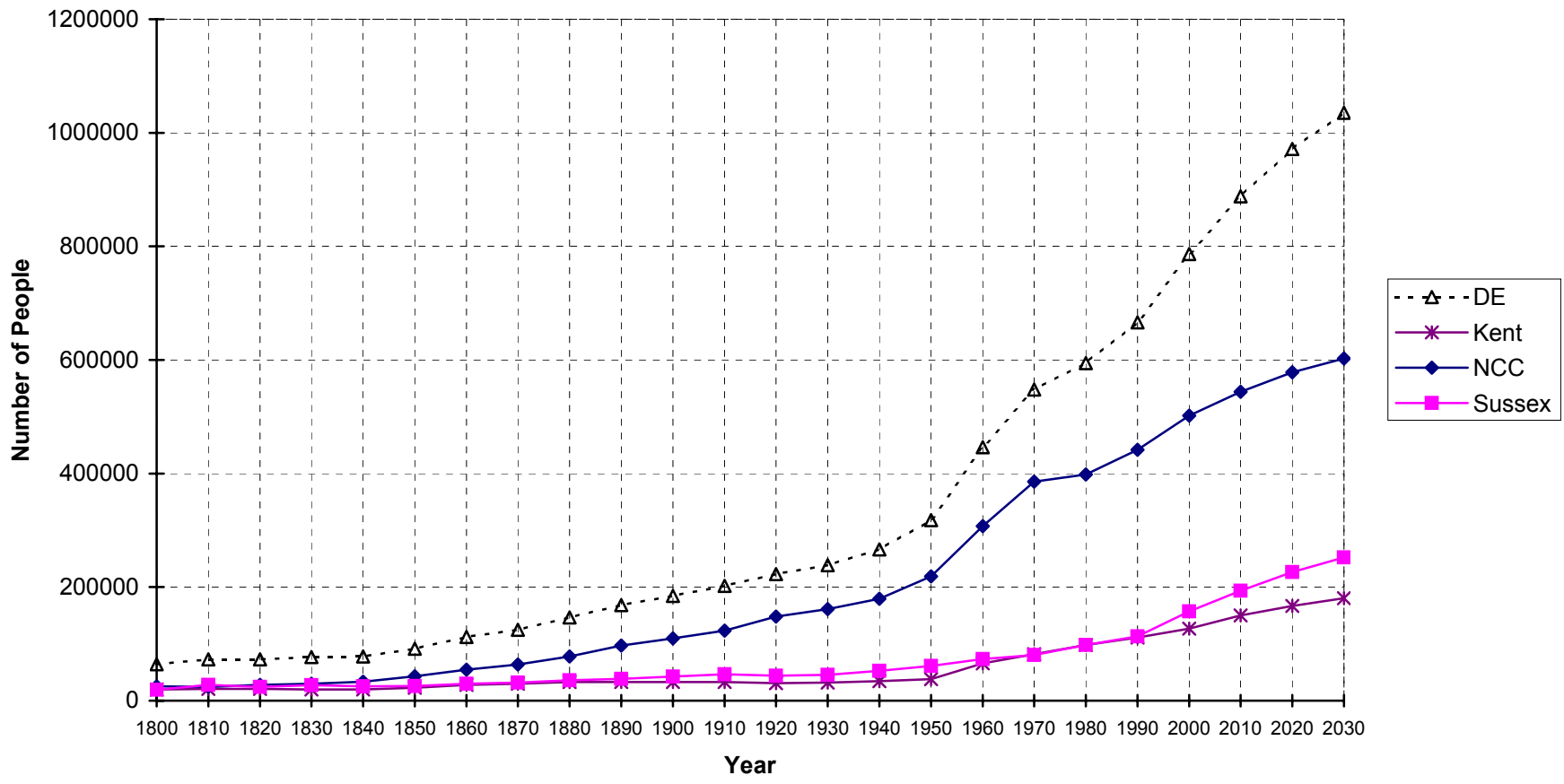
Sources:

Delaware Health Statistics Center
Delaware Population Consortium
U.S. Bureau of the Census

POPSEX

**Figure A-1
Population Growth**

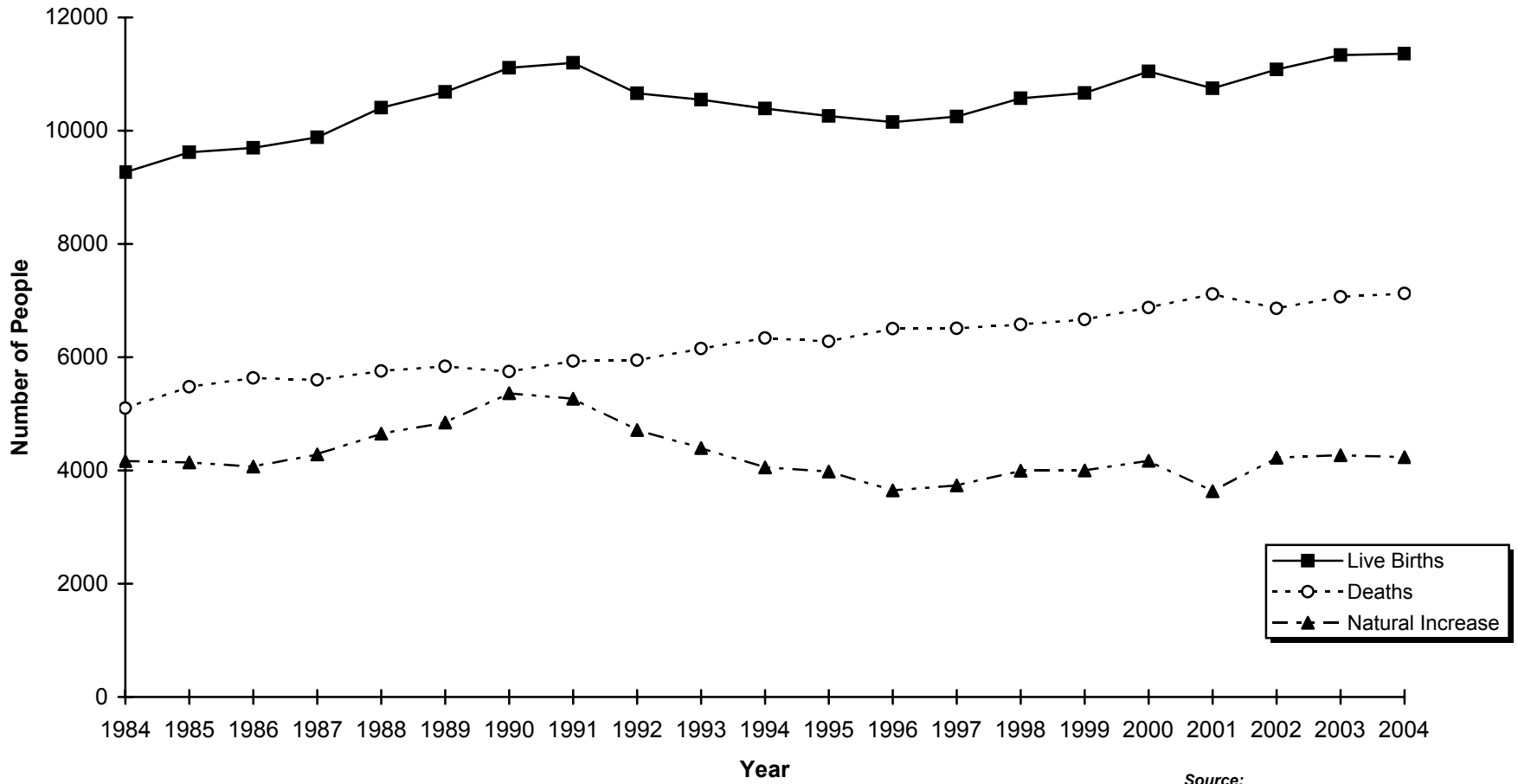
Delaware and Counties, 1800-2030



Sources:
Delaware Health Statistics Center
Delaware Population Consortium

Figure A-2
Live Births, Deaths, and Natural Increase

Delaware, 1984-2004



Source:
 Delaware Health Statistics Center

TABLE A-2
POPULATION ESTIMATES BY SEX, RACE AND AGE

DELAWARE, COUNTIES, CITY OF DOVER, CITY OF NEWARK, AND CITY OF WILMINGTON, 2004

Area/ Sex/Race	Age																		
	Total	0-4	5-9	10-14	15-19	20-24	25-29	30-34	35-39	40-44	45-49	50-54	55-59	60-64	65-69	70-74	75-79	80-84	85+
Delaware	830566	54668	53501	58808	56862	56718	50359	54556	59954	65927	62818	54436	48545	38874	31669	28348	23597	17314	13612
Male	401940	27491	27249	30035	28642	27909	24765	26894	29343	32209	30682	26160	23316	18416	14856	13028	10190	6663	4092
White	298652	19025	18017	19895	19700	19274	17202	18859	21271	24171	23785	20715	18992	15307	12430	11327	9067	5971	3644
Black	81556	6914	7204	8223	7405	6792	5332	5534	6090	6360	5637	4507	3555	2604	1975	1462	976	604	382
Female	428626	27177	26252	28773	28220	28809	25594	27662	30611	33718	32136	28276	25229	20458	16813	15320	13407	10651	9520
White	318075	18803	17284	19143	19286	20206	17859	19339	21570	24818	24207	21735	20242	16836	14015	13099	11746	9434	8453
Black	89989	6908	7004	7952	7435	6996	5877	6196	7139	7333	6692	5504	4132	3031	2339	1901	1461	1111	978
Kent	138754	9409	9525	10672	10423	9426	7937	8425	9562	10790	9877	8393	7811	6349	5476	5062	3990	3123	2504
Male	65295	4748	4765	5272	4889	4286	3611	3806	4543	5166	4687	4021	3744	3024	2583	2438	1711	1226	775
White	47392	3189	3121	3355	3233	2770	2540	2768	3352	3838	3568	3071	2922	2410	2076	1989	1455	1066	669
Black	15591	1373	1417	1719	1476	1343	875	854	995	1108	969	849	723	559	445	406	233	150	97
Female	73459	4661	4760	5400	5534	5140	4326	4619	5019	5624	5190	4372	4067	3325	2893	2624	2279	1897	1729
White	53187	3118	3124	3474	3619	3302	2936	3335	3635	4131	3781	3249	3138	2641	2348	2171	1958	1690	1537
Black	17509	1361	1421	1713	1717	1664	1177	1051	1158	1268	1197	962	781	577	450	371	273	189	179
Dover	33511	2277	2046	2161	3099	3539	2280	2029	2098	2314	2198	1944	1732	1287	1170	1074	930	682	651
Male	15688	1149	1075	1065	1488	1725	1098	949	1002	1083	972	914	783	595	536	475	336	260	183
Female	17823	1128		1096	1611	1814	1182	1080	1096	1231	1226	1030	949	692	634	599	594	422	468
New Castle	519555	35400	34149	37326	35921	37760	34194	36654	39649	42385	40206	34016	29074	21747	16600	14488	12582	9649	7755
Male	252339	17775	17465	19179	18374	18680	16955	18264	19442	20777	19744	16246	13935	10282	7731	6389	5282	3559	2260
White	184009	12318	11452	12595	12553	13027	11795	12634	13855	15389	15035	12600	11067	8253	6189	5423	4639	3165	2020
Black	53209	4452	4615	5271	4740	4389	3631	3869	4156	4231	3802	2969	2314	1650	1228	812	548	333	199
Female	267216	17625	16684	18147	17547	19080	17239	18390	20207	21608	20462	17770	15139	11465	8869	8099	7300	6090	5495
White	194030	12208	10836	11949	11940	13646	12073	12483	13802	15541	15084	13330	11754	9101	7060	6758	6305	5335	4825
Black	58915	4472	4524	5059	4562	4285	3879	4357	4985	4972	4518	3706	2763	1983	1517	1163	869	691	610
Newark	30335	927	975	1186	5724	8288	1853	1325	1156	1320	1496	1390	1185	872	708	612	560	440	318
Male	14076	479	517	606	2239	3888	1006	712	558	670	737	667	562	424	309	248	230	152	72
Female	16257	448	458	580	3485	4400	847	613	598	650	759	723	623	448	399	364	330	288	246
Wilmington*	72333	5540	4599	5467	5101	5292	5528	5955	5434	5327	5068	4347	3560	2688	2187	1916	1593	1411	1320
Male	34825	2846	2391	2784	2567	2782	2780	3039	2683	2623	2487	2062	1632	1166	927	747	569	420	320
White	12476	858	483	508	599	831	1185	1449	1069	939	944	808	761	543	363	342	303	261	230
Black	19942	1765	1691	2016	1761	1672	1344	1354	1437	1542	1452	1147	788	578	523	385	254	150	83
Female	37508	2694	2208	2683	2534	2510	2748	2916	2751	2704	2581	2285	1928	1522	1260	1169	1024	991	1000
White	12961	800	449	454	536	675	1123	1245	855	774	814	852	825	633	481	552	577	620	696
Black	22342	1700	1573	2011	1798	1605	1423	1461	1709	1796	1669	1330	1021	837	736	594	428	359	292
Sussex	172257	9859	9827	10810	10518	9532	8228	9477	10743	12752	12735	12027	11660	10778	9593	8798	7025	4542	3353
Male	84306	4968	5019	5584	5379	4943	4199	4824	5358	6266	6251	5893	5637	5110	4542	4201	3197	1878	1057
White	67251	3518	3444	3945	3914	3477	2867	3457	4064	4944	5182	5044	5003	4644	4165	3915	2973	1740	955
Black	12756	1089	1172	1233	1189	1060	826	811	939	1021	866	689	518	395	302	244	195	121	86
Female	87951	4891	4808	5226	5139	4589	4029	4653	5385	6486	6484	6134	6023	5668	5051	4597	3828	2664	2296
White	70858	3477	3324	3720	3727	3258	2850	3521	4133	5146	5342	5156	5350	5094	4607	4170	3483	2409	2091
Black	13565	1075	1059	1180	1156	1047	821	788	996	1093	977	836	588	471	372	367	319	231	189

Note:

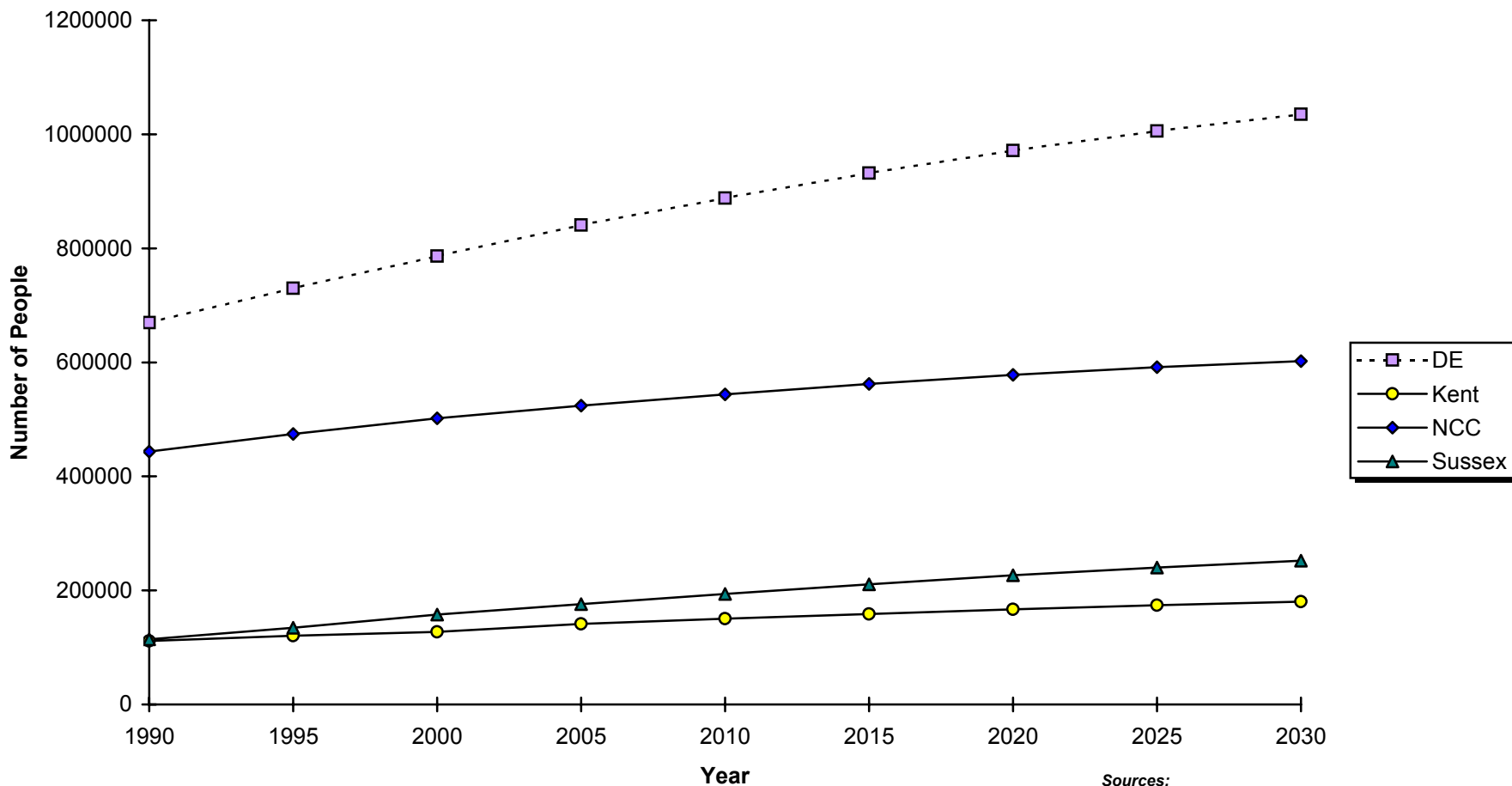
*Race estimates for the City of Wilmington are illustrative and should be interpreted with caution.

POPSRA

Sources:

Delaware Health Statistics Center
Delaware Population Consortium

**Figure A-3
Projected Population Growth
Delaware and Counties, 1990-2030**



Sources:
Delaware Health Statistics Center
Delaware Population Consortium