

# Delaware's County Health Rankings Forum



## County Health Rankings & Roadmaps

Building a Culture of Health, County by County

A Robert Wood Johnson Foundation program

# Agenda



- About Delaware Public Health Institute
- About the County Health Rankings & Roadmaps
- Where we live matters
- 2014 Delaware County Health Rankings

# Delaware Public Health Institute



Mission focuses on **enhancing population health** across Delaware by **collaborating** with organizations from multiple sectors to create a shared vision for community health

# County Health Rankings and Roadmaps



- RWJF and University of Wisconsin's Population Health Institute
- Since 2009
- Where we live matters to our health

# Why Rank?



- Simplify complex data
- Media coverage
- Add context
- Call to action
- Starting point





ZIP CODE  
**90002**

Life Expectancy

**72**

ZIP CODE  
**94301**

Life Expectancy

**86**



To learn more visit  
[www.calendow.org](http://www.calendow.org)



90002  
is the Watts  
neighborhood  
in South LA

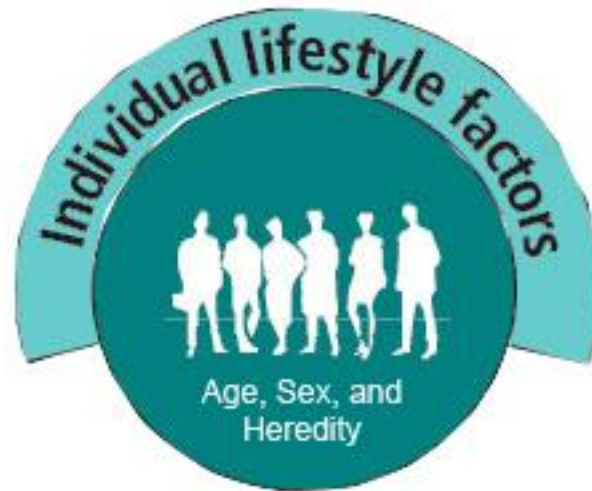
94301  
is Palo Alto,  
CA



# How where we live impacts our health



# How where we live impacts our health

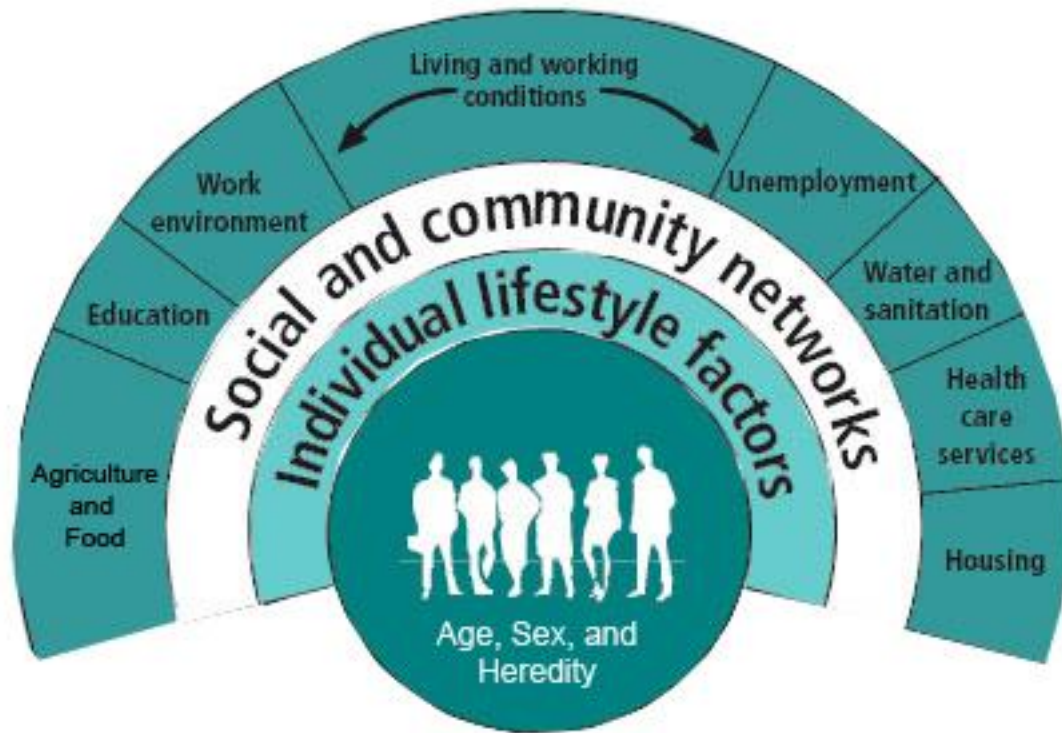




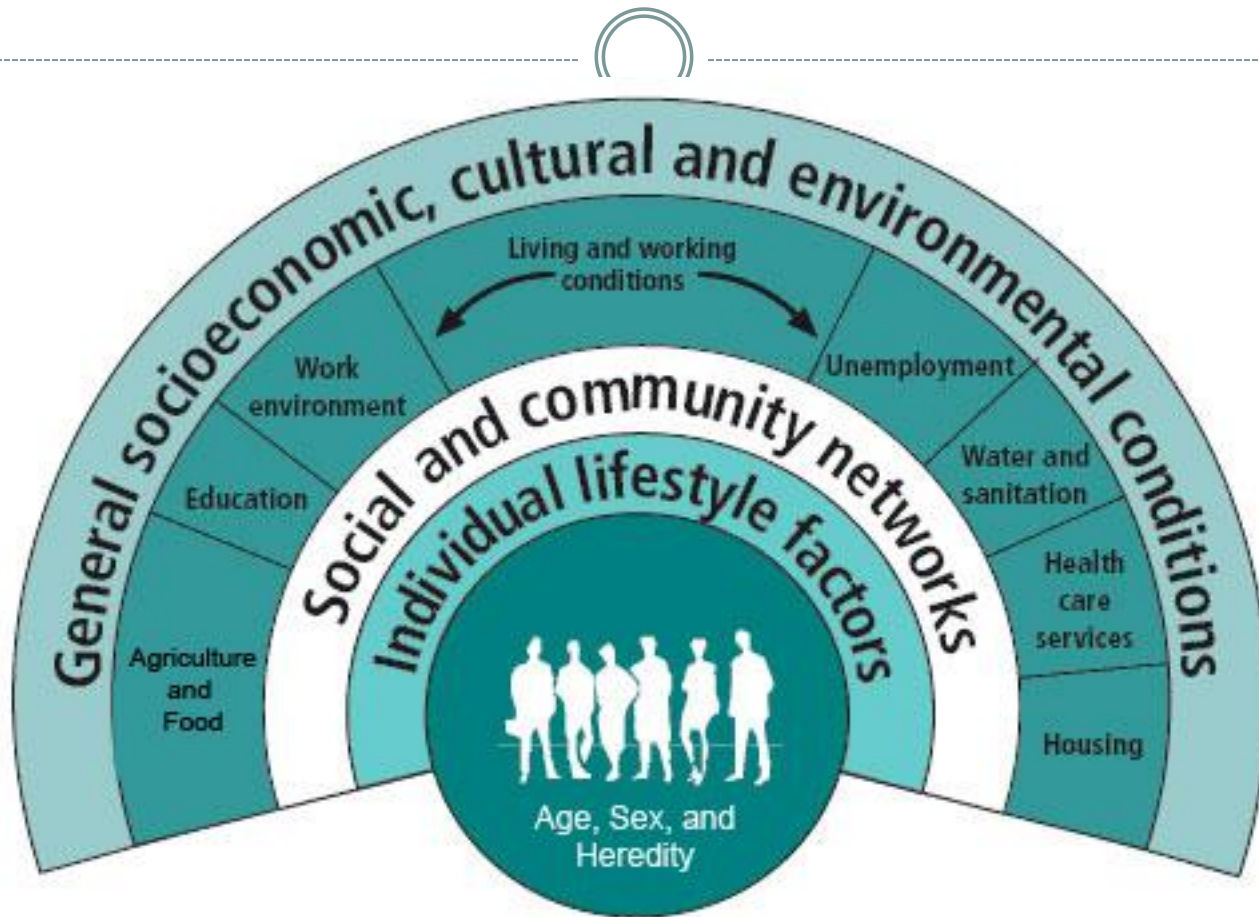
# How where we live impacts our health



# How where we live impacts our health

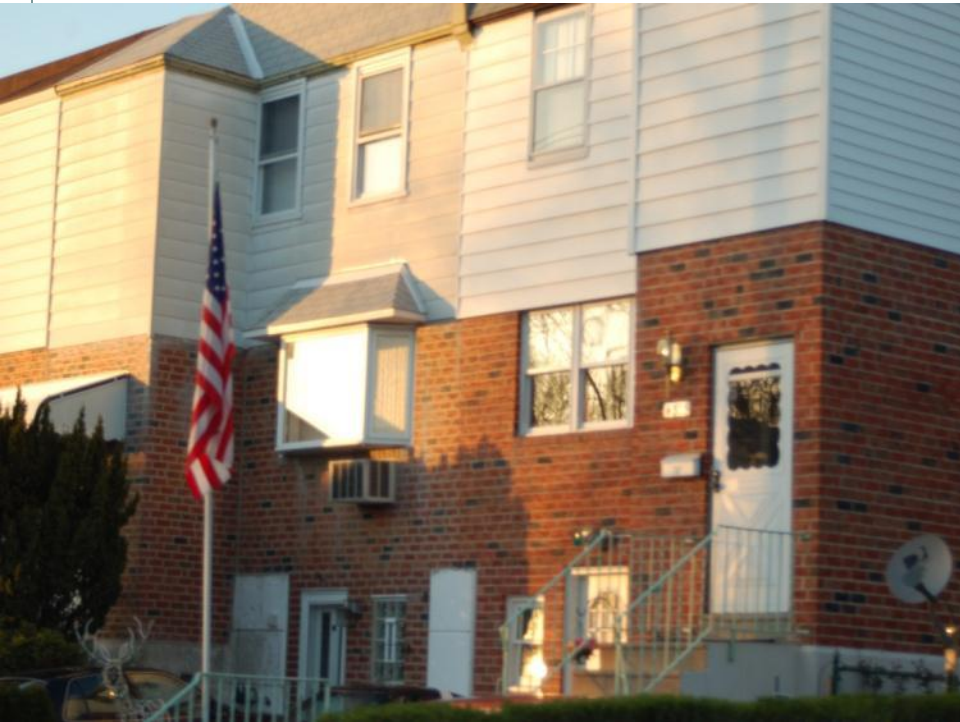


# How where we live impacts our health







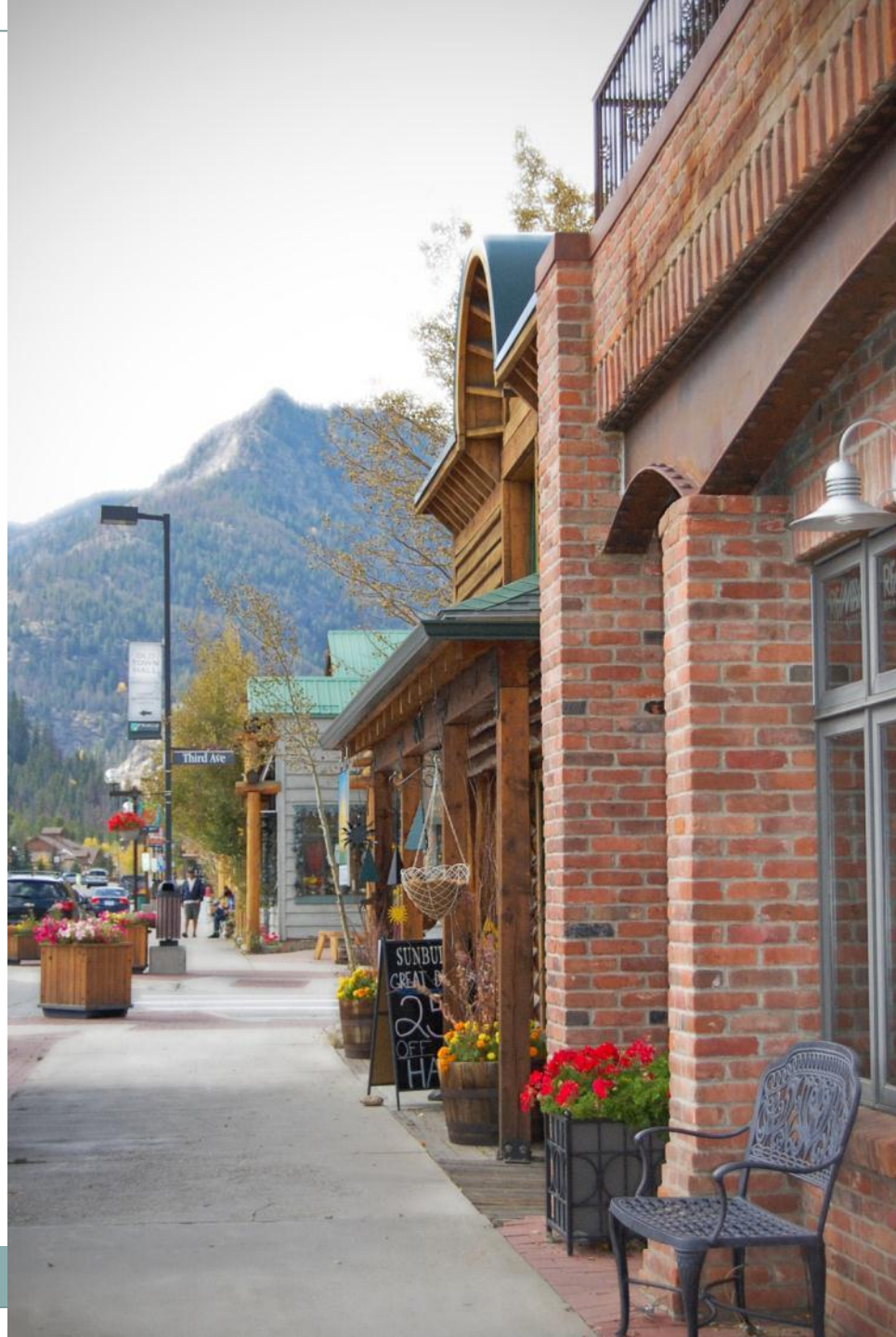




CAUTION  
MAY BE  
SLIPPERY  
WHEN WET









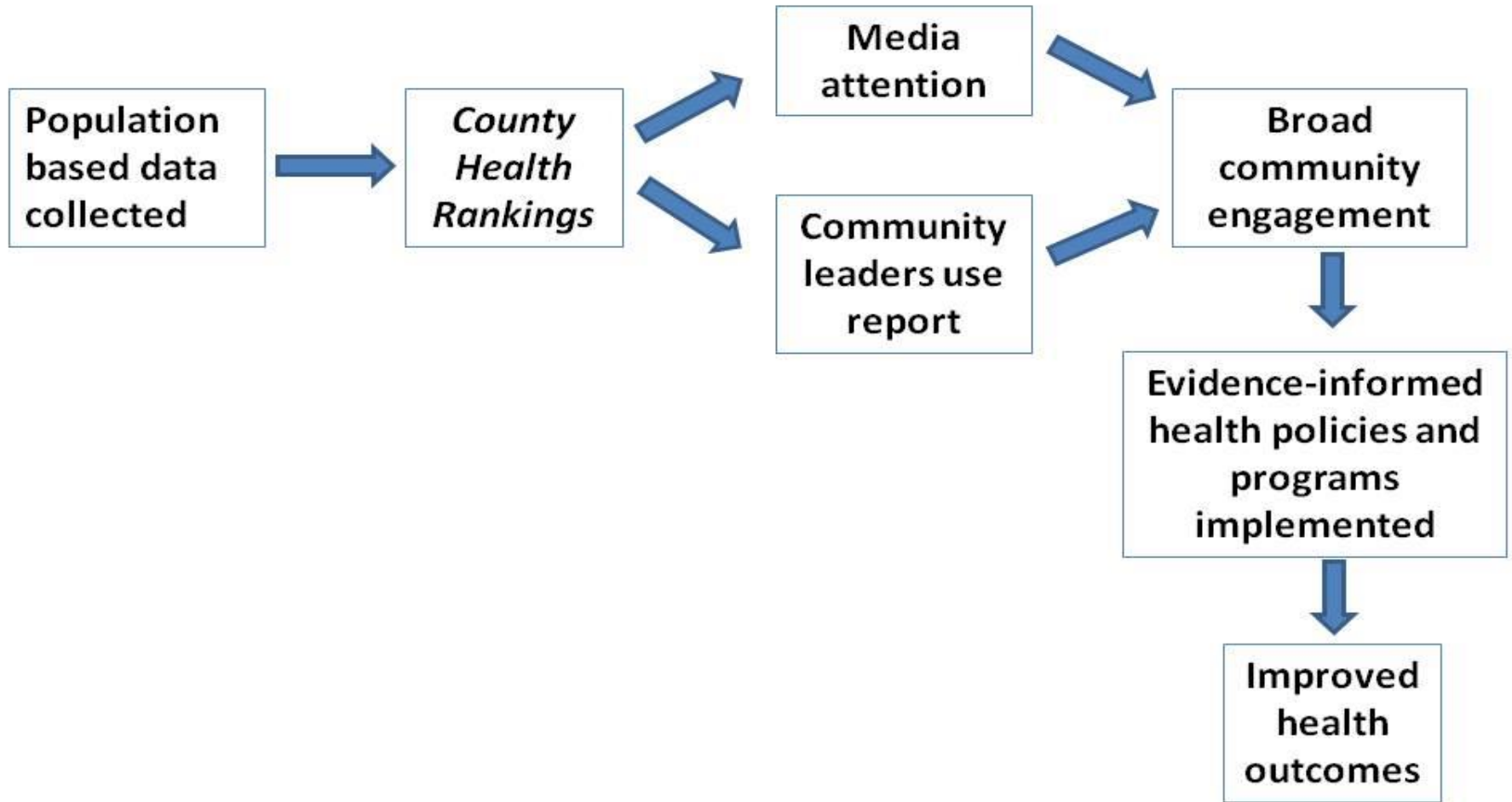








# County Health Rankings Logic Model



# County Health Rankings: 2 Rankings

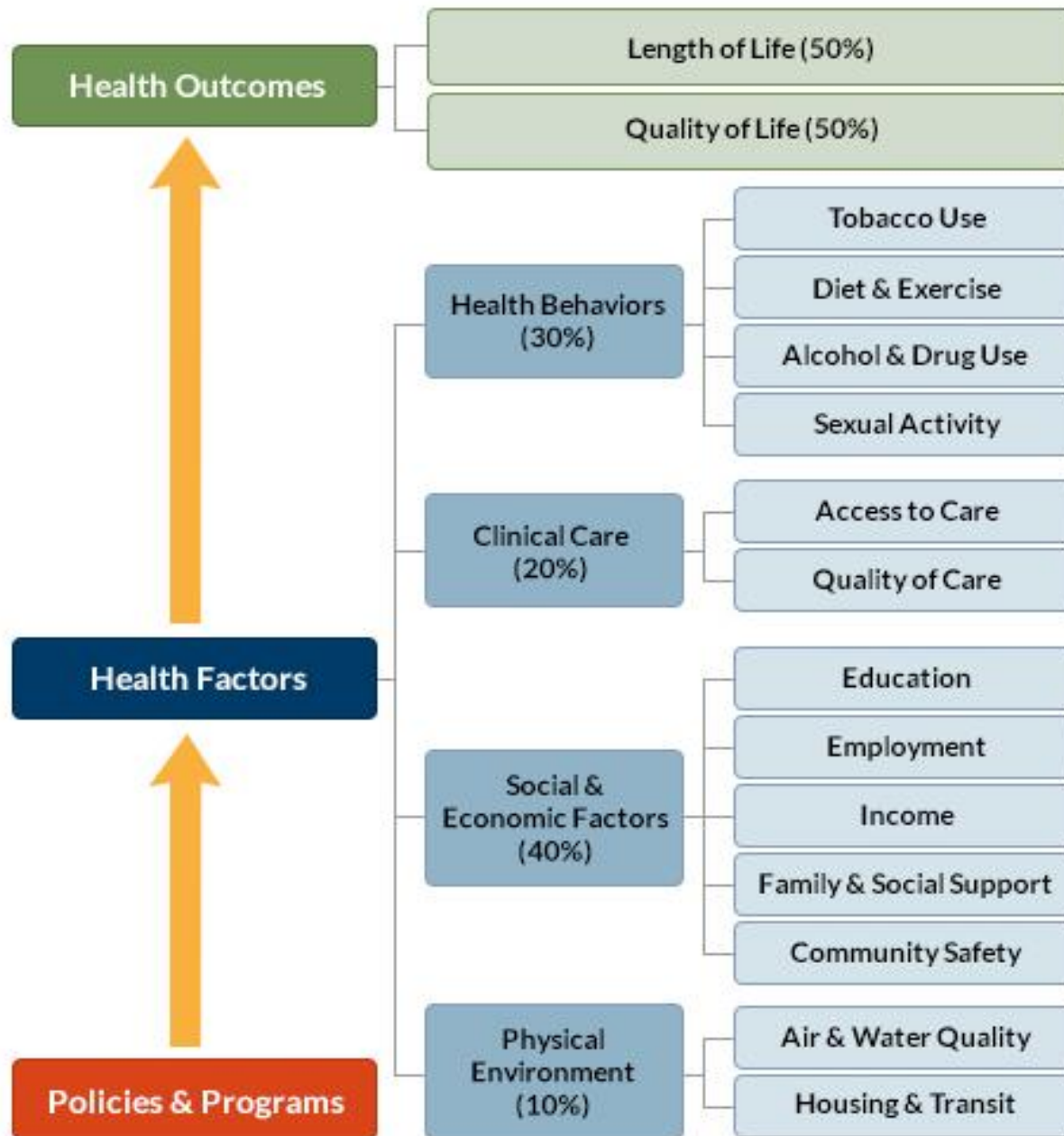


Today's  
Health



Tomorrow's  
Health





# Delaware County Rankings: Health Outcomes



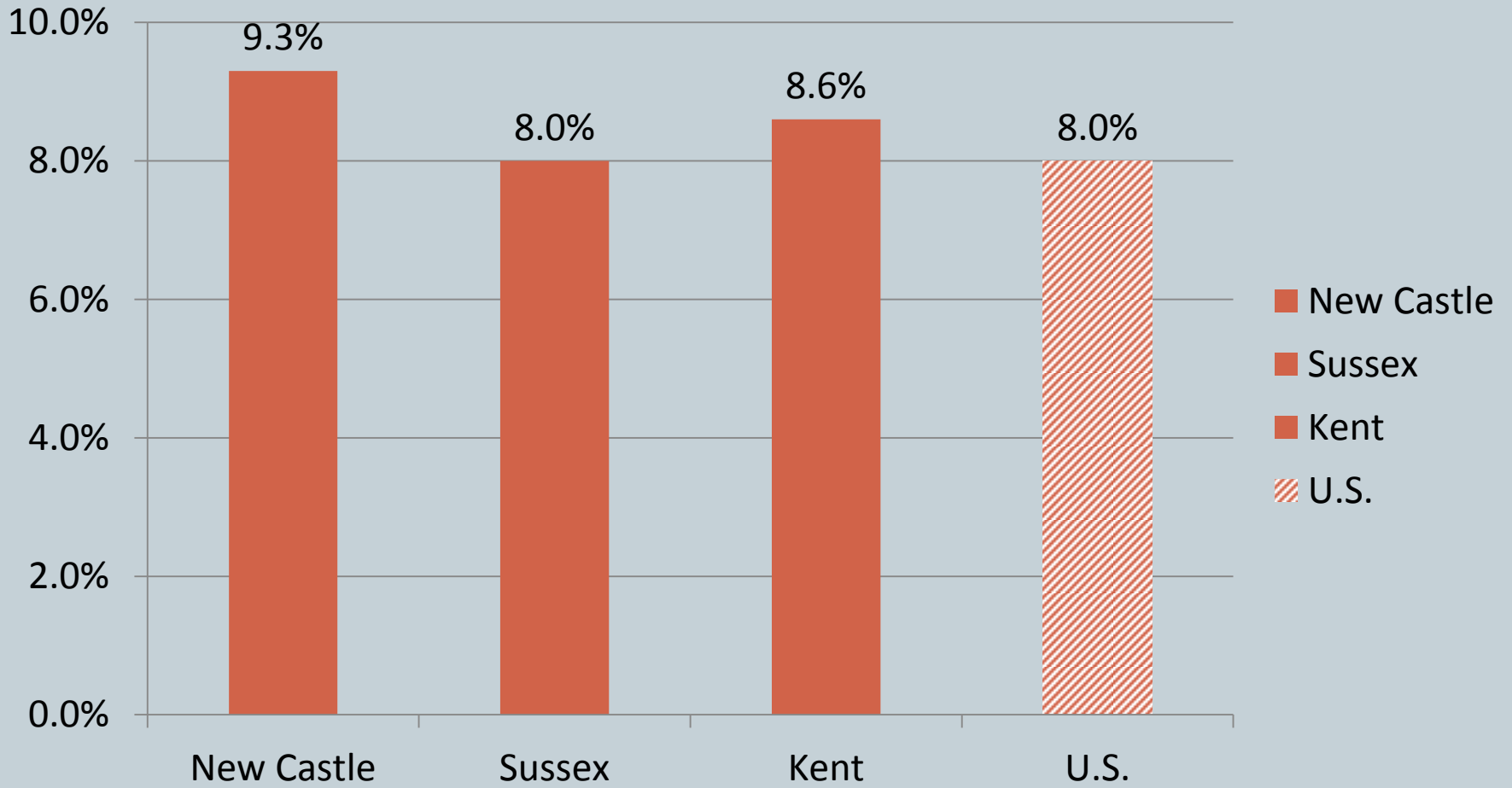
1. Length of life
2. Premature death
3. Quality of life
4. Poor or fair health
5. Poor physical health days
6. Poor mental health days
7. *Low birthweight*

1. New Castle

2. Sussex

3. Kent

# Low Birthweight



# Health Factors

1. Health Behaviors
2. Clinical Care\*
3. Social & Economical Factors
4. Physical Environment\*

1. New Castle
2. Sussex
3. Kent

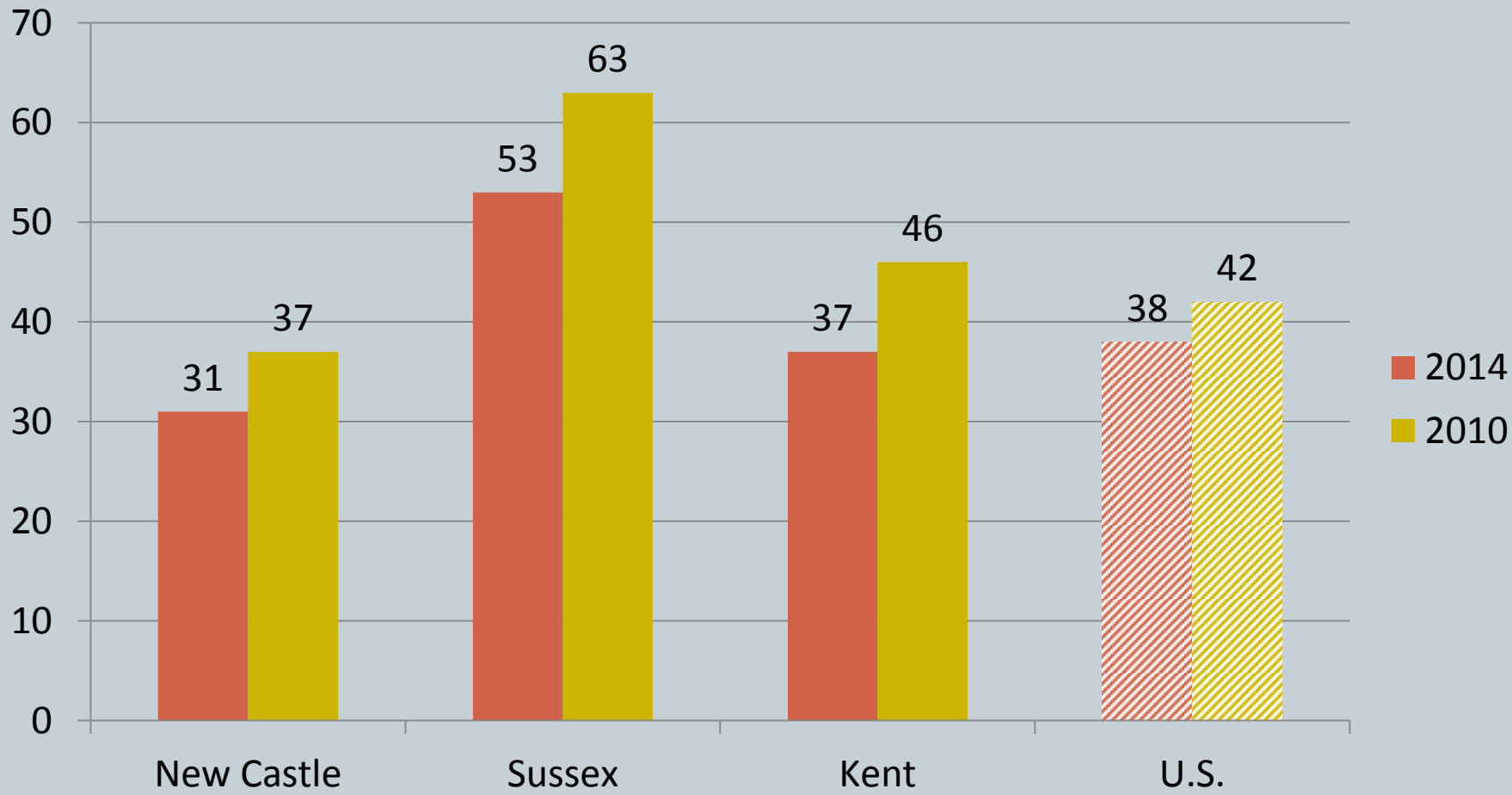
# Health Behaviors



- Smoking
- Obesity
- Physical inactivity
- Alcohol-impaired driving deaths
- Food environment
- Access to exercise opportunities
- STIs
- Teen births

# Teen Births

(per 1,000 15-19 year old females)

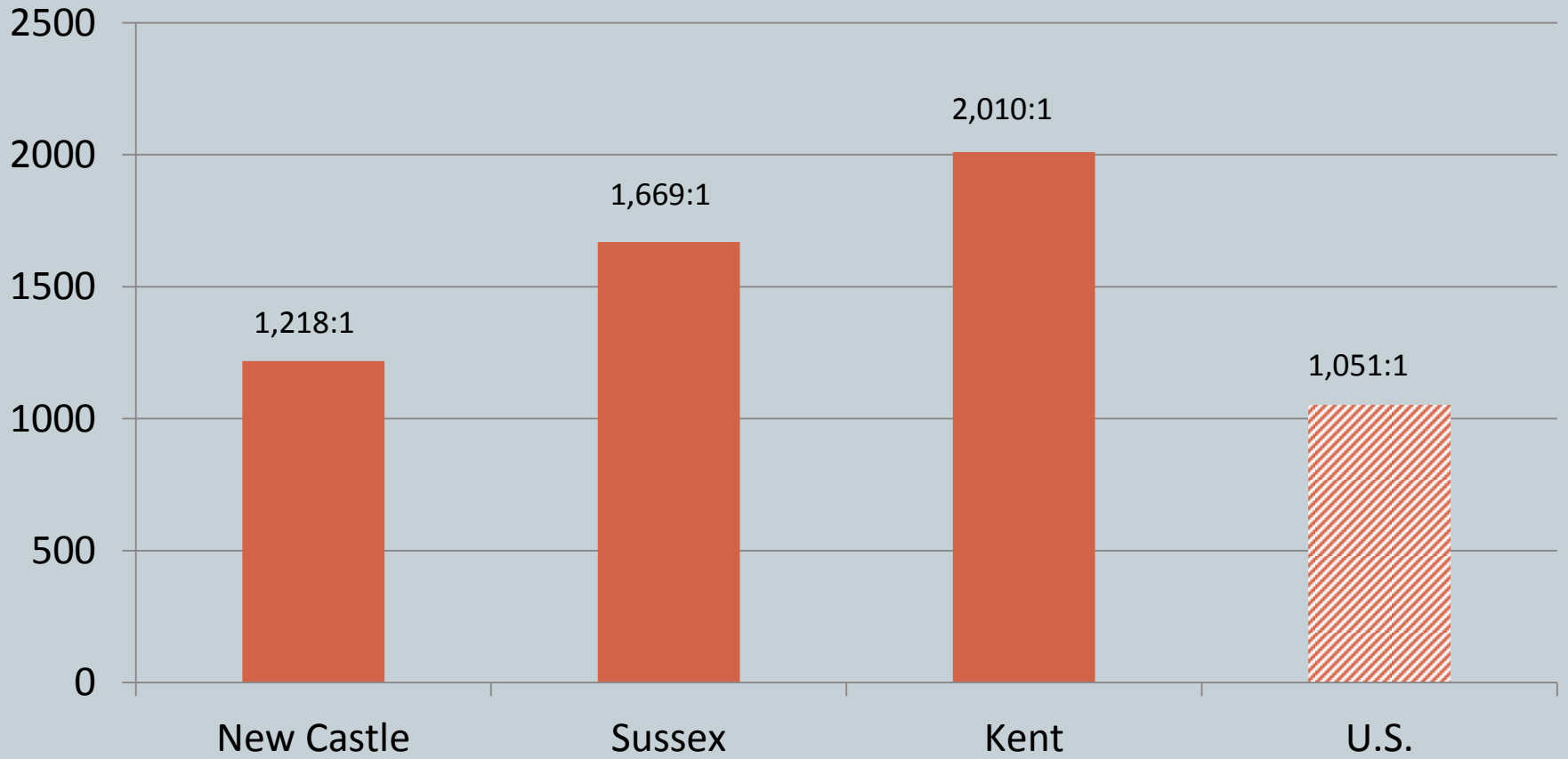


# Clinical Care



- Uninsured
- Primary care physicians
- Dentists
- Mental health providers
- Preventable hospital stays
- Diabetic screening
- Mammography screening

# Primary Care Physicians



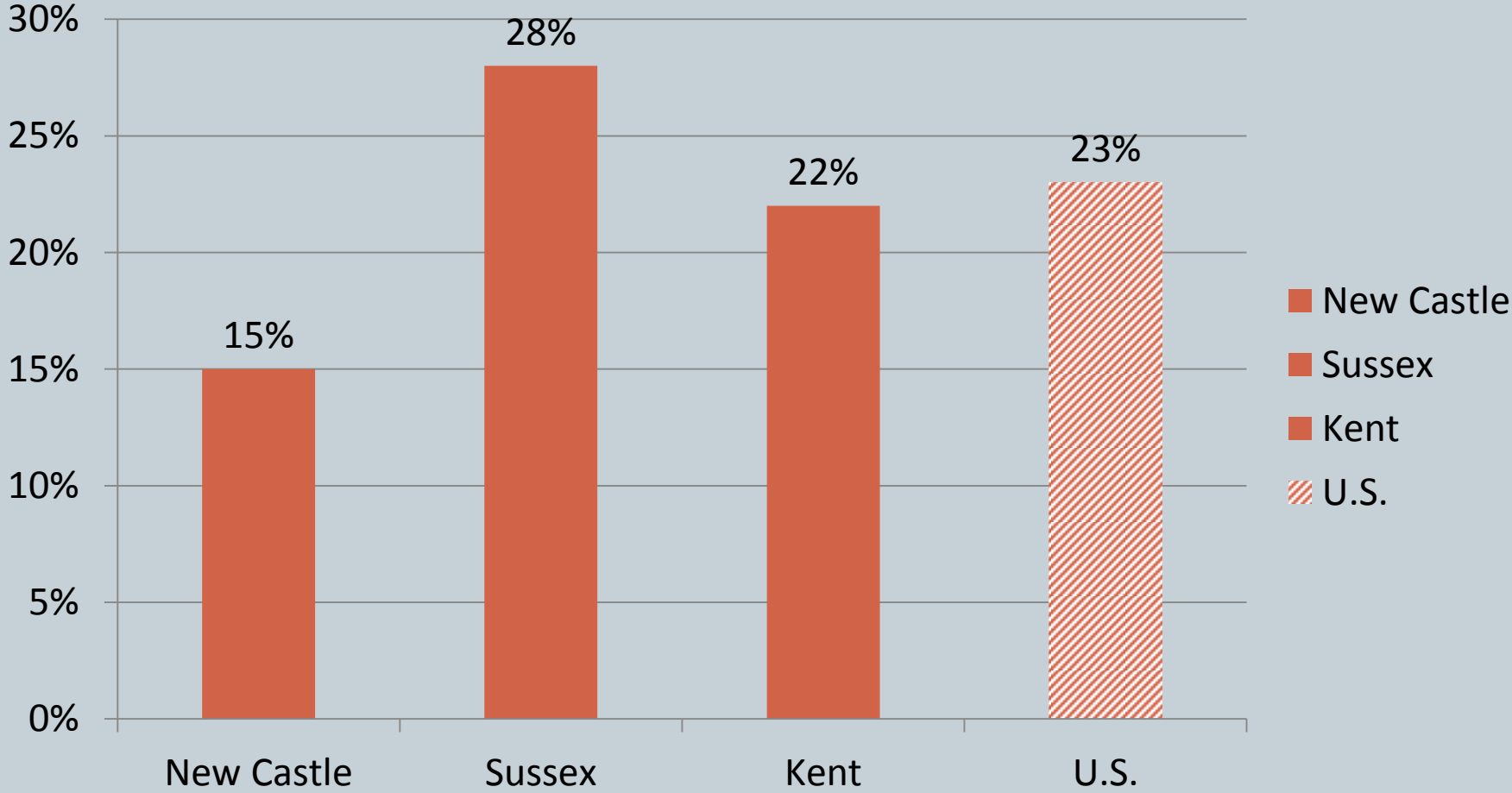


# Social & Economic Factors



- High school graduation
- Some college
- Unemployment
- Children in poverty
- Inadequate social support
- Children in single-parent households
- Violent crime
- Injury deaths

# Children in Poverty



# Physical Environment



- Air pollution
- Drinking water violations
- Severe housing problems
- Driving alone to work
- Long commute

# County Health Rankings: A Jumping-Off Point



- Use rankings to start the discussion
  - Simplify data
  - Good for comparing
- Combine with other data and first-hand experience
- Counties each have strengths and weaknesses
- Turn Data into Action
- [www.countyhealthrankings.org](http://www.countyhealthrankings.org)

# Questions?



**Thank you!**

**Francine Axler**  
**francine@phmc.org**

**Gabrielle Grode**  
**ggrode@phmc.org**