

**2021 DELAWARE NURSING HOME  
UTILIZATION STATISTICAL REPORT  
(DNHUSR)**

**May 2022**

**Delaware Health and Social Services  
Delaware Health Care Commission  
Herman M. Holloway Sr. Health and Social Services Campus  
1901 N. Dupont Highway  
New Castle, DE 19720**



*DELAWARE HEALTH AND SOCIAL SERVICES*

## EXECUTIVE SUMMARY

The Delaware Nursing Home Utilization Statistical Report (DNHUSR) is published annually by the Delaware Health Care Commission (DHCC) as a method of reporting newly-emerging trends in Delaware's long-term care and rehabilitation services landscape. The 2021 DNHUSR highlights the ongoing impacts of the COVID-19 pandemic on Delaware nursing home utilization trends. Through annual publication of the DNHUSR, Delaware will continue to monitor the long-term impacts of the COVID-19 pandemic on nursing home utilization trends statewide.

In 2021, 47 Delaware nursing homes operated a maximum of 4,926 licensed beds. With the exception of Delaware Hospital for the Chronically Ill in Smyrna, Delaware, all licensed nursing homes in Delaware were privately owned and operated in 2021. Throughout the year, the total number of licensed nursing home beds statewide fluctuated due to facility closures and increases and reductions in licensed bed counts. Delaware's aggregate number of nursing home admissions in 2021 (9,260) partially rebounded from the historic low of 2020 (8,238) but remained approximately 20% lower than pre-pandemic values. Increases in nursing home admissions varied by county. From 2020-2021, private nursing home admissions increased 2.9% in New Castle County, 30.7% in Kent County, and 22.9% in Sussex County. Relative to 2020, 2021 discharges from Delaware nursing homes increased in Kent and Sussex Counties (23.6% and 5.0%, respectively) and declined in New Castle County (11.3%), yielding an overall 2.0% decline in nursing home discharges from 2020-2021. Fifty-five percent of patients discharged from Delaware nursing homes in 2021 were discharged home. From 2020-2021, the aggregate occupancy rate for private nursing homes fell from 77% to 74%.

Admissions and discharges to Delaware nursing homes follow racial demographic proportions among Delaware's 65+ population. The Delaware Population Consortium estimates that in 2021, White residents accounted for 76% of Delaware's 65+ population, the cohort most likely to utilize nursing home and rehabilitation services. Comparably, in 2021, White patients accounted for 77% of nursing home admissions and discharges. Patients of color accounted for 23% of nursing home admissions and discharges in 2021, with Black patients representing 21% of all admissions and discharges. Patients 75-84 years and 85 years or older accounted for 32% and 31%, respectively, of 2021 Delaware nursing home admissions. Twenty-four percent of 2021 nursing home admissions were individuals ages 65-74. Individuals under the age of 65 accounted for 14% of 2021 admissions. Similar age-related trends were observed for 2020 discharges.

## TABLE OF CONTENTS

INTRODUCTION .....	1
STATEWIDE POPULATION PROJECTIONS .....	1
PART 1: 2021 DELAWARE NURSING HOME UTILIZATION STATISTICS .....	4
NUMBER OF FACILITIES AND LICENSED BEDS .....	4
BILLABLE PATIENT DAYS .....	5
OCCUPANCY RATES .....	6
ADMISSIONS .....	8
DISCHARGES .....	11
SOURCE OF PAYMENT .....	14
PART 2: 2021 FACILITY-LEVEL NURSING HOME UTILIZATION STATISTICS .....	16
APPENDIX A: 2021 NURSING HOME TRENDS AMONG THE UNDER 65 POPULATION .....	51

## **ACKNOWLEDGEMENTS**

This report was funded by the Delaware Health and Social Services, Delaware Health Care Commission. The annual Delaware Nursing Home Utilization Statistical Report is the product of collaborative support from the Delaware Health Care Facilities Association, the Division of Services for Aging and Adults with Physical Disabilities, and all Delaware nursing homes. The Delaware Health Care Commission thanks these stakeholders and other subject matter experts who provided background information, analysis, and feedback to inform the development of this report.

## INTRODUCTION

This, the 35<sup>th</sup> edition of the Delaware Nursing Home Utilization Statistical Report (DNHUSR), summarizes Delaware nursing home trend data for January through December 2021. Data summarized in the DNHUSR are submitted on a monthly basis by Delaware nursing homes<sup>1</sup>, and aggregated at the end of the reporting year to yield annual trend data by nursing home facility and county. The DNHUSR presents 2021 Delaware nursing home data in two main sections. Part 1 (Delaware Nursing Home Utilization Statistics) summarizes utilization data from 2011 through 2021 and provides a high-level view of nursing home utilization trends in Delaware over the past decade. Data presented in Part 1 are aggregated to the state- and county-levels. Part 2 (Facility-Level Nursing Home Utilization Statistics) presents facility-level data, including total patient days, occupancy rates, percentage of patients by source of payment, and annual admissions and discharges. Part 2 of the DNHUSR provides a more detailed view of utilization trends among Delaware's licensed nursing homes.

The 2021 DNHUSR reflects the ongoing impacts of the COVID-19 pandemic on Delaware nursing home utilization trends. Since 2020, the COVID-19 pandemic has profoundly impacted nursing homes and other long-term care facilities across the U.S. By May 2022, residents of long-term care facilities accounted for 954 of Delaware's 2,928 COVID-19 deaths (33%); individuals ages 65+ accounted for 79% of COVID-19 deaths in Delaware.<sup>2</sup> Delaware's aggregate number of nursing home admissions in 2021 (9,260) partially rebounded from the historic low of 2020 (8,238) but remained approximately 20% lower than pre-pandemic values. From 2020 to 2021, the aggregate occupancy rate for private Delaware nursing homes fell from 77.1% to 74.0%. Future iterations of the DNHUSR will continue to quantify the long-term impacts of the COVID-19 pandemic on nursing home utilization trends.

## STATEWIDE POPULATION PROJECTIONS

The growing size and the changing demographics of Delaware's population are central to the understanding of the distribution of nursing homes, the number of licensed nursing home beds, and their utilization. DHCC analyzed 2021 Delaware Population Consortium data to provide the context within which to evaluate Delaware's ability to meet nursing home bed demand. Figure 1 shows the projected

---

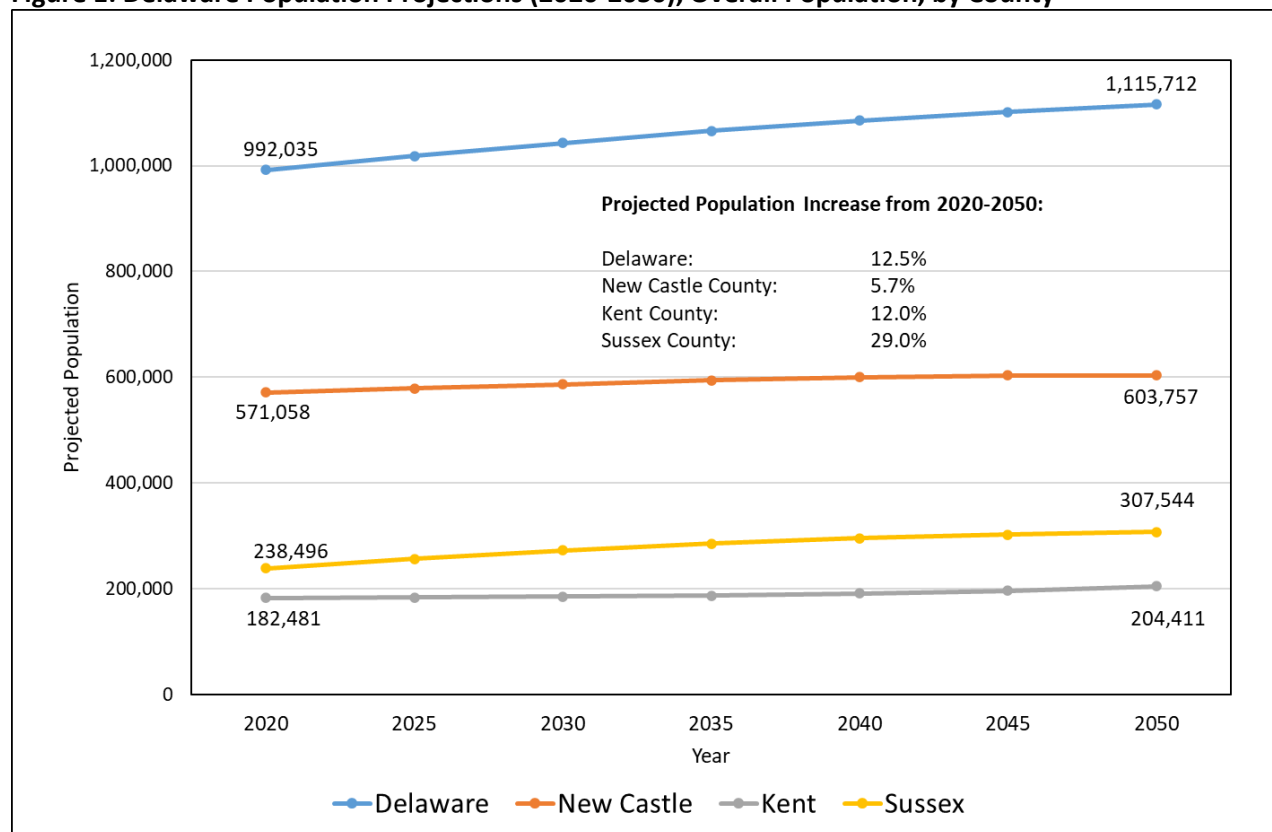
<sup>1</sup> Excluded from this report are facilities that serve individuals under the age of 18, as well as Intermediate Care Facilities for Individuals with Intellectual Developmental Disabilities (ICF/IID). ICF/IID facilities provide active and comprehensive and individualized treatment and rehabilitation services to promote functional status and independence.

<sup>2</sup> <https://myhealthycommunity.dhss.delaware.gov/locations/state/deaths>

increase of Delaware's total population from 2020 to 2050. Figure 2 shows the projected population increase over the same time period among Delawareans ages 65 and older.

Between 2020 and 2050, Delaware's total population is expected to increase 12.5% (from 992,035 in 2020 to 1,115,712 in 2050). Overall population growth is distributed unevenly across Delaware's counties. From 2020-2050, New Castle and Kent Counties are expected to experience a 5.7% and 12.0% increase in total population, respectively; total population growth for Sussex County is estimated at 29.0% for the same time period.

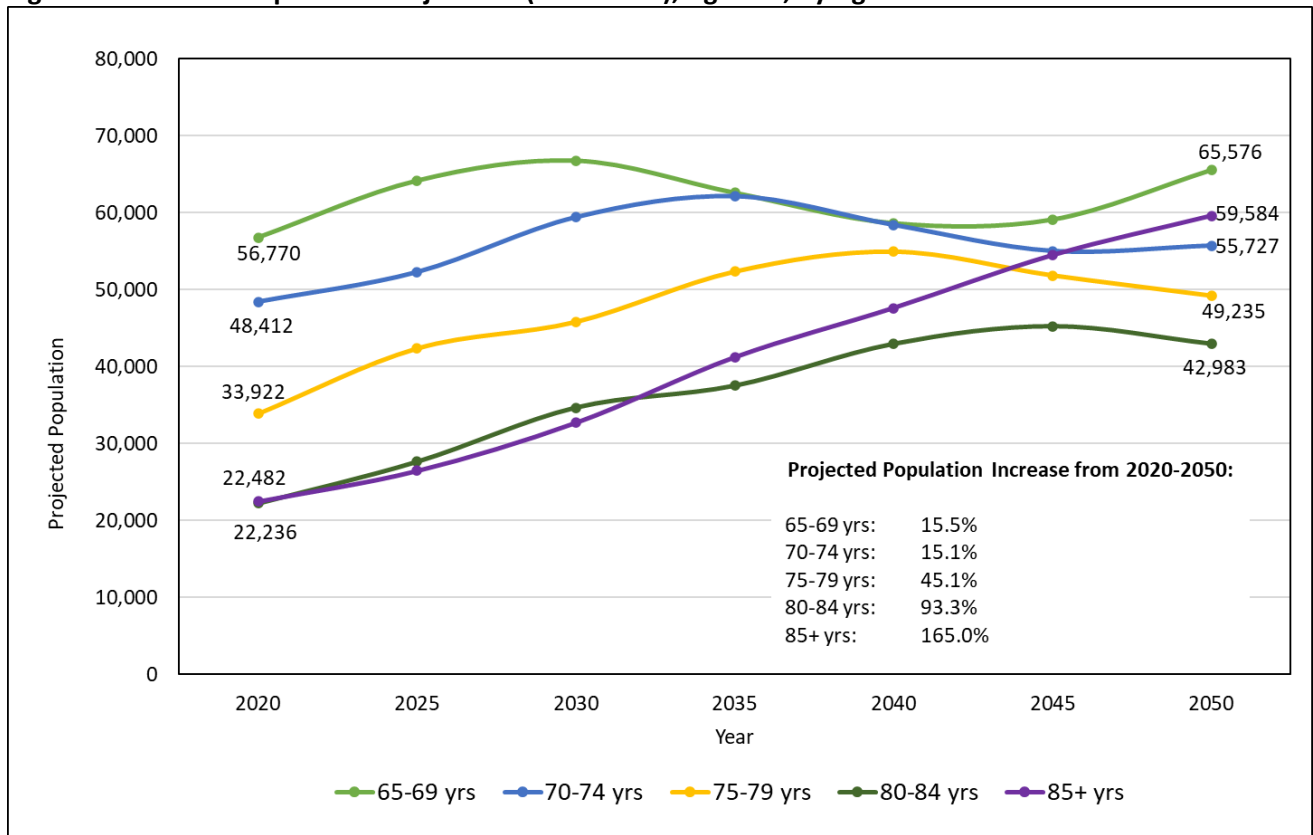
**Figure 1: Delaware Population Projections (2020-2050), Overall Population, by County**



Source: Annual Population Projections, Delaware Population Consortium, Version 2021.0, October 2021.

Projected population growth is more dramatic among older Delawareans. From 2020 to 2050, the statewide population of Delawareans ages 65 and older is expected to increase 48.6% (from 183,822 to 273,105). The most dramatic increases in cohort size are projected among the oldest subpopulations. From 2020 to 2050, the number of Delawareans ages 65-69, 75-79, 80-84, and 85+ are projected to increase 15.5%, 15.1%, 45.1%, 93.3%, and 165.0%, respectively (Figure 2).

**Figure 2: Delaware Population Projections (2020-2050), Age 65+, by Age Cohort**



Source: Annual Population Projections, Delaware Population Consortium, Version 2021.0, October 2021.

## PART 1: 2021 DELAWARE NURSING HOME UTILIZATION STATISTICS

### NUMBER OF FACILITIES AND LICENSED BEDS

In 2021, 47 Delaware nursing homes operated a maximum of 4,926 licensed beds. With the exception of one facility (Delaware Hospital for the Chronically Ill in Smyrna, Delaware), all licensed nursing homes in Delaware were privately owned and operated in 2021. Throughout the year, the total number of licensed nursing home beds statewide fluctuated due to facility closures and increases and reductions in licensed bed counts. Facility-level changes that most strongly impacted Delaware's 2021 licensed nursing home bed count include the following:

- Forwood Manor Nursing Home, a 72-bed facility in Wilmington, closed permanently on July 1, 2021. Partial-year data for Forwood Manor Nursing Home are included in the 2021 DNHUSR.
- Polaris Healthcare & Rehabilitation Center in Milford increased its licensed bed count from 26 to 86 beds in November 2021.
- Delmar Nursing and Rehabilitation in Delmar reduced its licensed bed count from 109 to 99 beds in April 2021.

Additionally, Foulk Manor South, a 46-bed facility in Wilmington, closed permanently on December 31, 2021. While complete 2021 data are presented for Foulk Manor South, this facility closure will impact Delaware's nursing home facility and bed counts in the future.

**Table 1: Delaware Nursing Home Beds, by County and Facility Type, 2011-2021**

Year	Private Facilities								Public Facilities		All Facilities	
	New Castle		Kent County		Sussex		Total		Homes	Beds	Homes	Beds
	Homes	Beds	Homes	Beds	Homes	Beds	Homes	Beds				
2011	26	2,519	6	642	11	1,234	43	4,395	3	591	46	4,986
2012	27	2,569	6	672	11	1,264	44	4,505	3	576	47	5,081
2013	27	2,649	6	672	11	1,264	44	4,585	3	522	47	5,107
2014	27	2,649	6	672	11	1,264	44	4,585	3	375	47	4,960
2015	27	2,646	6	672	11	1,264	44	4,582	3	312	47	4,894
2016	27	2,647	6	678	11	1,264	44	4,589	2	287	46	4,876
2017	27	2,641	6	678	11	1,264	44	4,583	2	283	46	4,866
2018	27	2,629	7	764	11	1,264	45	4,657	2	283	47	4,940
2019	27	2,617	7	764	11	1,264	45	4,645	2	283	47	4,928
2020	27	2,618	7	762	12	1,290	46	4,670	2	283	48	4,953
2021	27	2,621	7	762	12	1,340	46	4,721	1	205	47	4,296
2011-2021 % Change	4.0%		18.7%		8.6%		7.4%			-65.3%		-13.8%
2020-2021 % Change	0.1%		0.0%		3.9%		1.1%			-27.6%		-13.3%



## BILLABLE PATIENT DAYS

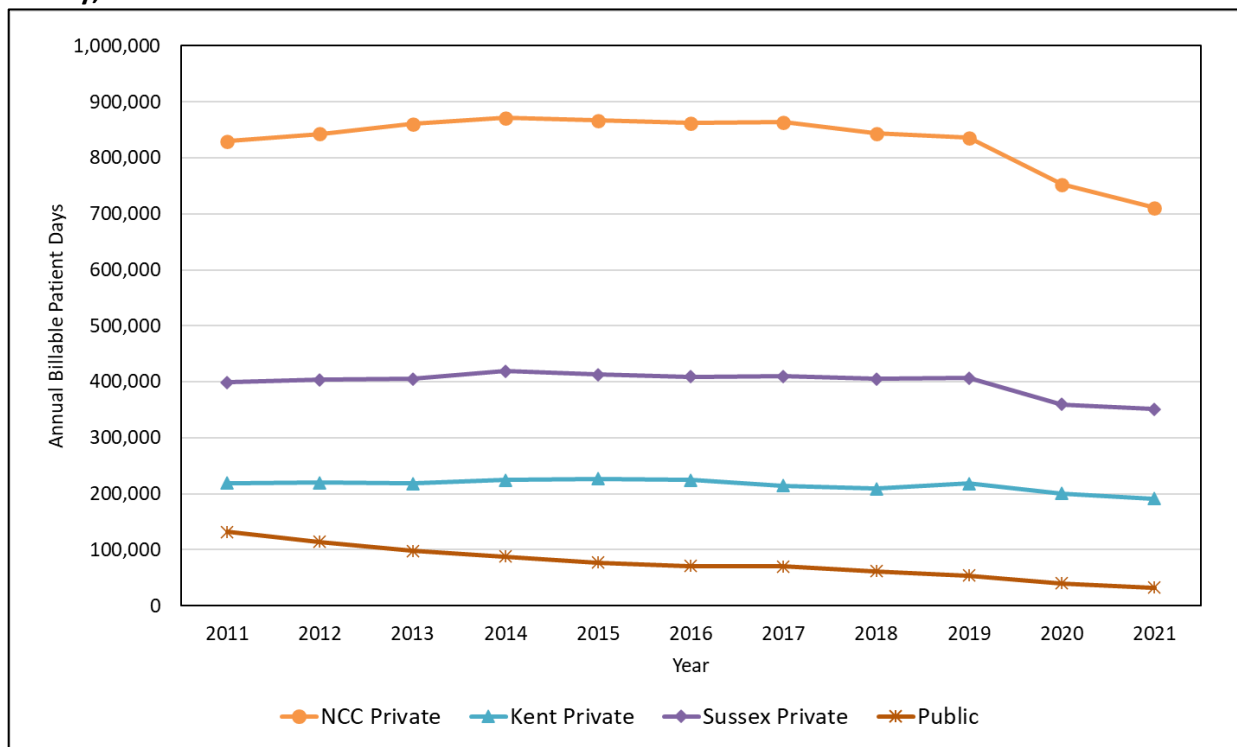
A commonly-used measure of nursing home utilization is the number of billable patient days generated by a facility over a given time period. A billable patient day represents a unit of time (i.e., one day) during which the facility's services are used by one patient. For example, if a nursing home has 100 patients on a day, the facility has generated 100 billable patient days for that 24-hour period. If a facility's number of billable patient days increases from one time period to the next, it is an indication that the facility is (a) caring for more patients, (b) caring for patients for longer periods of time, or (c) a combination of these two factors.

From 2011-2019, annual billable patient days for private facilities in all three counties remained relatively stable (Table 2; Figure 3). In 2020, billable patient days declined across New Castle, Kent, and Sussex Counties amid the COVID-19 pandemic. From 2020-2021, annual billable patient days continued to decline slightly, falling 4.5% among all private nursing homes in Delaware. Billable patient days in public facilities have steadily declined from 2011-2021.

**Table 2: Delaware Nursing Homes, Number of Billable Patient Days Utilized by Year, Facility Type, and County, 2011-2021**

Year	Private Facilities				Public Facilities	All Facilities
	New Castle County	Kent County	Sussex County	Total Private		
2011	829,974	219,302	398,550	1,447,826	131,675	1,579,501
2012	843,039	219,558	403,842	1,466,439	114,177	1,580,616
2013	860,924	218,651	404,942	1,484,517	98,108	1,582,625
2014	871,456	224,370	419,167	1,514,993	87,792	1,602,785
2015	867,015	226,841	412,646	1,506,502	76,993	1,583,495
2016	862,050	224,549	409,052	1,495,651	71,111	1,566,762
2017	864,047	214,618	409,816	1,488,481	69,703	1,551,184
2018	843,990	209,311	404,814	1,458,115	61,903	1,520,018
2019	835,845	218,157	406,828	1,460,830	54,139	1,514,969
2020	752,439	200,162	359,640	1,312,241	40,064	1,352,305
2021	710,913	191,500	350,949	1,253,362	32,286	1,285,648
2011-2021 % Change	-14.3%	-12.7%	-11.9%	-13.4%	-75.5%	-18.6%
2020-2021 % Change	-5.5%	-4.3%	-2.4%	-4.5%	-19.4%	-4.9%

**Figure 3: Delaware Nursing Homes, Number of Billable Patient Days Utilized by Year, Facility Type, and County, 2011-2021**



## OCCUPANCY RATES

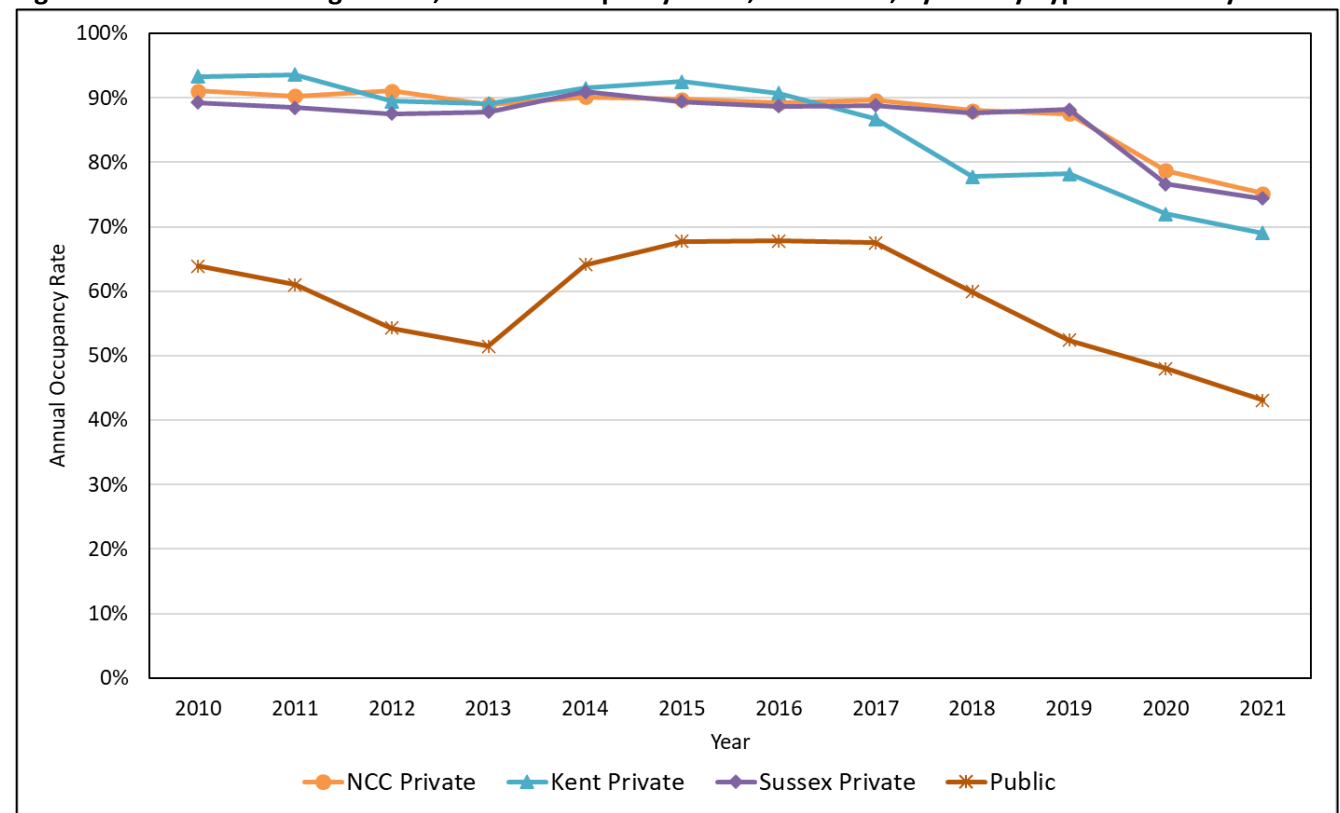
Occupancy rates are helpful for putting facilities' utilization data within the context of available resources. A facility's occupancy rate reflects the percentage of available beds occupied by patients throughout the reporting year. Occupancy rates are weighted based on the number of days a facility was open during the reporting year. Mathematically,  $\text{Occupancy Rate} = \left[ \frac{\text{Number of Billable Patient Days}}{\text{Number of Licensed Bed Days}} \right] * 100\%$  where (Number of Licensed Bed Days) equals the sum of the monthly number of licensed bed days in a facility (calculated as number of licensed beds multiplied by number of days in the month). If a facility was open fewer than 12 months, occupancy rate reflects the percentage of available beds occupied by patients during the months in which the facility was open.

In 2021, private nursing homes in New Castle, Kent, and Sussex Counties operated at 75.2%, 69.0%, and 74.4% occupancy, respectively (Table 3; Figure 4). In the decade prior to the COVID-19 pandemic (i.e., from 2011-2019) occupancy rates for private nursing homes consistently approached or exceeded 90%. The comparatively lower occupancy rate for Kent County private nursing homes relative to New Castle County and Sussex County private facilities, reflects a facility-related nuance: the Delaware Veterans Home (a larger, 150-bed facility) operates at a comparatively lower-occupancy (36.6% in 2021) due in part to admissions-based patient criteria (e.g., U.S. veteran status).

**Table 3: Delaware Nursing Homes, Weighted Occupancy Rates, 2011-2021, by Facility Type and County**

Year	Private Facilities				Public Facilities	All Facilities
	New Castle County	Kent County	Sussex County	Total Private		
2011	90.3%	93.6%	88.5%	90.3%	61.0%	86.8%
2012	91.1%	89.5%	87.5%	89.8%	54.3%	85.8%
2013	89.0%	89.1%	87.8%	88.7%	51.5%	84.9%
2014	90.1%	91.5%	90.9%	90.5%	64.1%	88.5%
2015	89.8%	92.5%	89.4%	90.1%	67.7%	88.7%
2016	89.2%	90.7%	88.7%	89.3%	67.8%	88.0%
2017	89.6%	86.7%	88.8%	89.0%	67.5%	87.7%
2018	88.0%	77.8%	87.7%	86.3%	59.9%	84.8%
2019	87.5%	78.2%	88.2%	86.2%	52.4%	84.2%
2020	78.7%	72.0%	76.6%	77.1%	48.0%	75.7%
2021	75.2%	69.0%	74.4%	74.0%	43.1%	72.6%
2011-2021 % Change	-16.7%	-26.3%	-15.9%	-18.1%	-29.3%	-16.4%
2020-2021 % Change	-4.4%	-4.1%	-2.9%	-4.0%	-10.2%	-4.1%

**Figure 4: Delaware Nursing Homes, Annual Occupancy Rates, 2011-2021, by Facility Type and County**



## ADMISSIONS

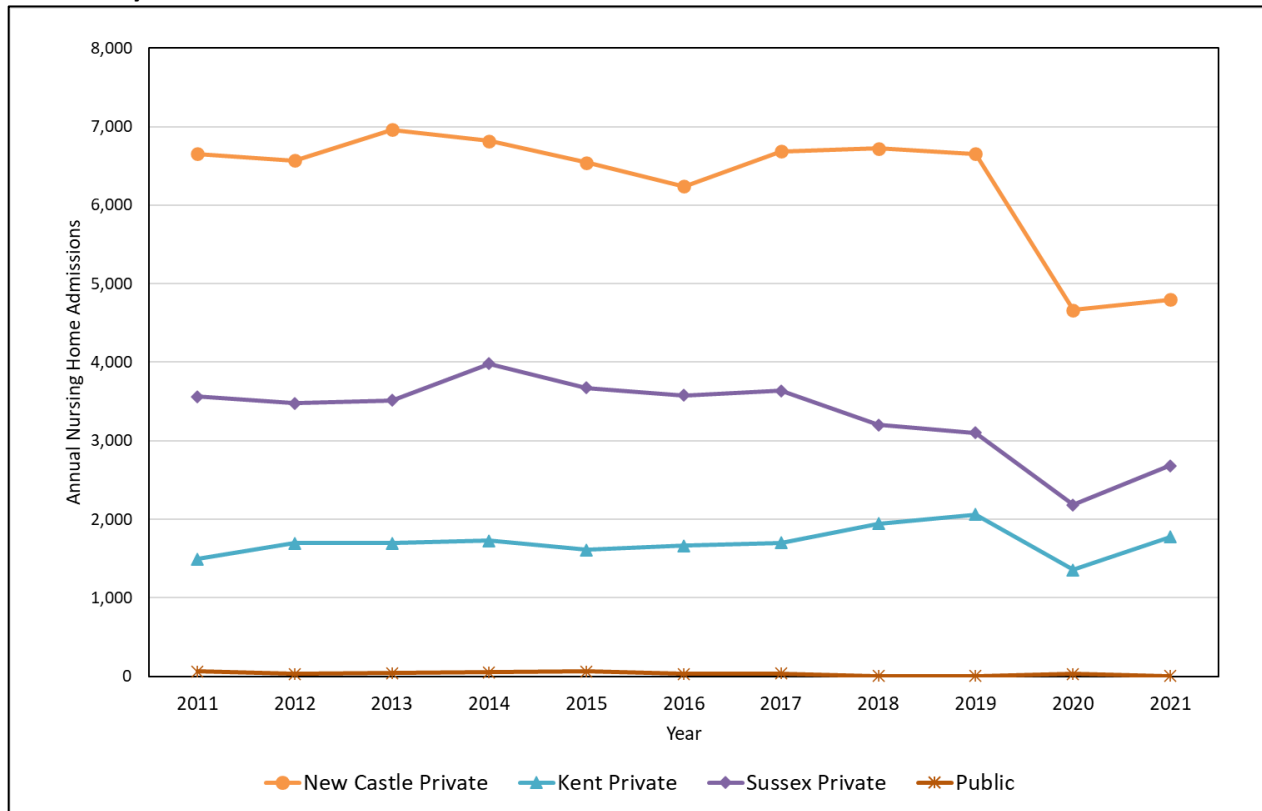
In 2021, Delaware nursing homes admitted 9,260 patients. As shown in Table 4 and Figure 5, annual admissions to private facilities sharply declined in 2020 amid the COVID-19 pandemic. In 2021, annual nursing home admissions partially rebounded from the impacts of the COVID-19 pandemic but remained approximately 20% lower than pre-pandemic values. From 2020-2021, private nursing home admissions increased 2.9% in New Castle County, 30.7% in Kent County, and 22.9% in Sussex County.

Unlike private facility admissions, annual admissions to public nursing homes have fluctuated erratically. The falling number of public facility admissions reflect facility closures and/or reduction in the number of available licensed public beds. In 2021, a total of 12 patients were admitted to Delaware's sole public nursing home facility, Delaware Hospital for the Chronically Ill.

**Table 4: Delaware Nursing Homes, Total Number of Nursing Home Admissions, 2011-2021, by Facility Type and County**

Year	Private Facilities				Public Facilities	All Facilities
	New Castle County	Kent County	Sussex County	Total Private		
2011	6,654	1,493	3,563	11,710	65	11,775
2012	6,566	1,696	3,477	11,739	31	11,770
2013	6,962	1,697	3,513	12,172	39	12,211
2014	6,816	1,726	3,983	12,525	50	12,575
2015	6,544	1,612	3,672	11,828	64	11,892
2016	6,238	1,666	3,576	11,480	33	11,513
2017	6,685	1,701	3,637	12,023	36	12,059
2018	6,722	1,944	3,199	11,865	5	11,870
2019	6,652	2,063	3,103	11,818	3	11,821
2020	4,665	1,357	2,183	8,205	33	8,238
2021	4,800	1,773	2,682	9,255	5	9,260
2011-2021 % Change	-27.9%	18.8%	-24.7%	-21.0%	-92.3%	-21.4%
2020-2021 % Change	2.9%	30.7%	22.9%	12.8%	-84.8%	12.4%

**Figure 5: Delaware Nursing Homes, Total Number of Nursing Home Admissions, 2011-2021, by Facility Type and County**

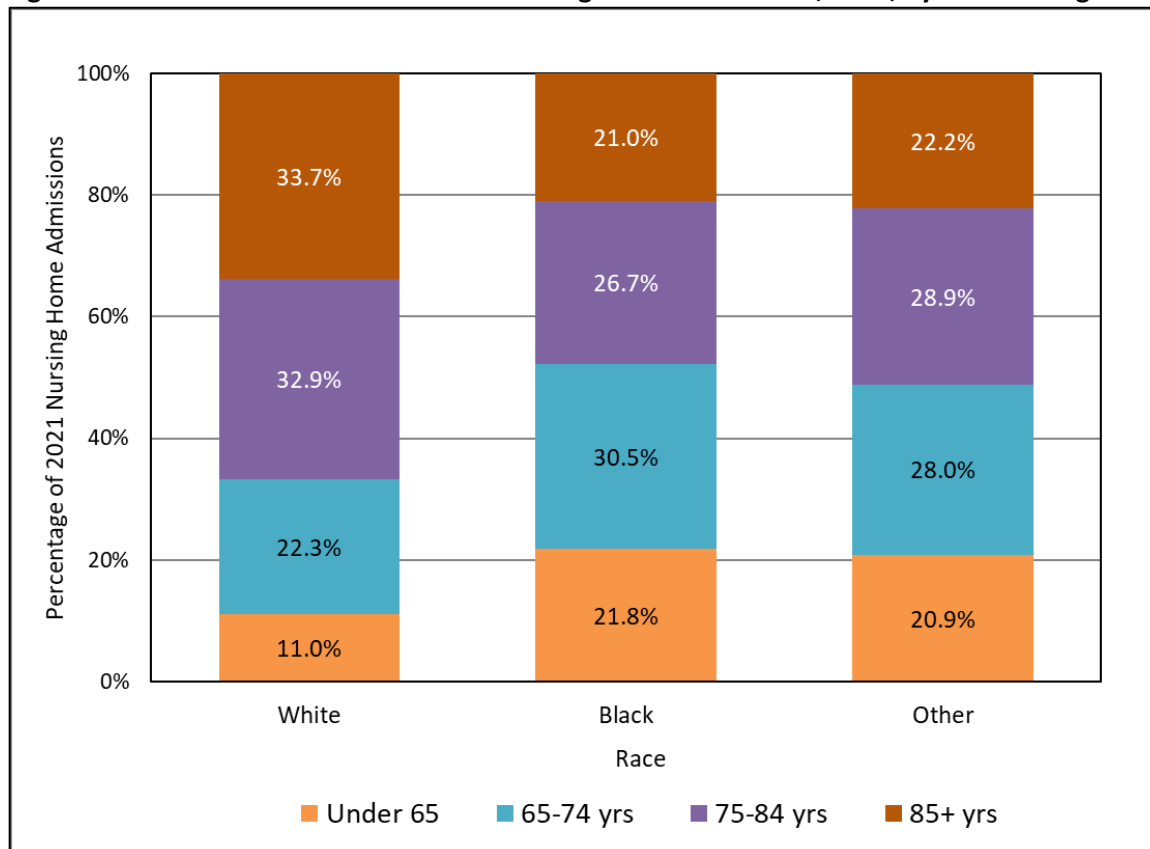


White patients accounted for 7,115 of 9,260 (76.8%) nursing home admissions in 2021 (Table 5). Black patients and patients of other races accounted for 20.7% and 2.4% of 2021 nursing home admissions, respectively. This racial breakdown of nursing home admissions is in line with Delaware’s demographic distribution. The Delaware Population Consortium estimates that in 2021, White residents accounted for 76% of Delaware’s 65+ population, the cohort most likely to utilize nursing home and rehabilitation services. Patients 75-84 years and 85 years or older accounted for 31.5% and 30.8%, respectively, of 2021 Delaware nursing home admissions. Approximately one-quarter (24.1%) of 2021 nursing home admissions were individuals ages 65-74. The youngest category of nursing home patients – those under age 65 – accounted for 13.5% of 2021 admissions. (Refer to Appendix A for further information on Delaware nursing home admissions and discharges among the under 65 population.)

**Table 5: Number (Percentage) of Delaware Nursing Home Admissions, by Race and Age, 2021**

Race	Age				Total (by race)
	Under 65	65-74 yrs.	75-84 yrs.	85+ yrs.	
White	786 (11.0%)	1,587 (22.3%)	2,343 (32.9%)	2,399 (33.7%)	7,115 (100.0%)
Black	418 (21.8%)	586 (30.5%)	513 (26.7%)	403 (21.0%)	1,920 (100.0%)
Other	47 (20.9%)	63 (28.0%)	65 (28.9%)	50 (22.2%)	225 (100.0%)
Total (by age)	1,251 (13.5%)	2,236 (24.1%)	2,921 (31.5%)	2,852 (30.8%)	9,260 (100.0%)

The percentage of 2021 admissions under the age of 65 was higher among Black patients (21.8%) and patients of other races (20.9%) relative to White patients (11.0%) (Figure 6). Individuals ages 74 or younger accounted for 52.3% of Black admissions and 48.9% of admissions among patients of other races; in comparison, just 33.3% of White admissions were patients ages 74 or younger. Accordingly, patients ages 85 or older accounted for a higher percentage of White admissions (33.7%) relative to Black admissions (21.0%) and admissions among patients of other races (22.2%).

**Figure 6: Racial Breakdown of Delaware Nursing Home Admissions, 2021, by Race and Age**

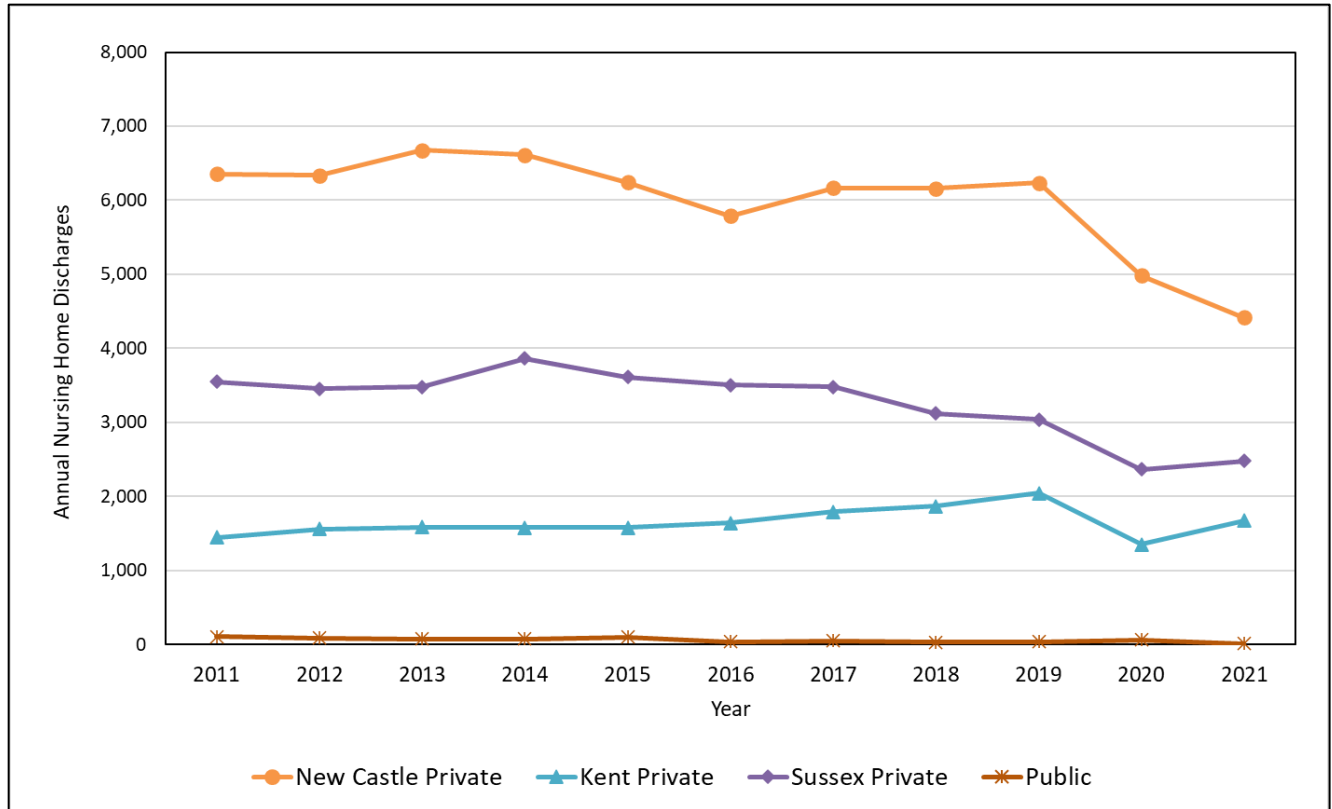
## DISCHARGES

In 2021, Delaware nursing homes discharged 8,583 patients (Table 6; Figure 7), reflecting a slight increase compared to the previous year. Increases in discharged patients were not uniform across Delaware's three counties. From 2020-2021, private nursing home discharges fell 11.3% in New Castle County and increased 23.6% and 5.0% in Kent and Sussex Counties, respectively. In recent years prior to the pandemic, (i.e., from 2011-2019), nursing home discharge trends mirrored admission trends among private facilities; that is, discharges from private nursing home facilities in all three counties fluctuated within a narrow range from approximately 5,800 to 6,700. Over the past decade, discharges from public nursing homes have fluctuated erratically. The falling number of public facility discharges reflect facility closures and/or reduction in the number of available licensed public beds.

**Table 6: Delaware Nursing Home Discharges, by Facility Type and County, 2011-2021**

Year	Private Facilities				Public Facilities	All Facilities
	New Castle County	Kent County	Sussex County	Total Private		
2011	6,356	1,447	3,551	11,354	103	11,457
2012	6,339	1,558	3,454	11,330	87	11,417
2013	6,674	1,587	3,479	11,740	74	11,814
2014	6,615	1,579	3,861	12,055	75	12,130
2015	6,239	1,576	3,614	11,429	97	11,526
2016	5,790	1,644	3,506	10,940	37	10,977
2017	6,163	1,792	3,476	11,431	48	11,479
2018	6,158	1,870	3,121	11,149	30	11,179
2019	6,235	2,044	3,040	11,319	34	11,353
2020	4,982	1,352	2,363	8,697	61	8,758
2021	4,419	1,671	2,481	8,571	12	8,583
2011-2021 % Change	-30.5%	15.5%	-30.1%	-24.5%	-88.3%	-25.1%
2020-2021 % Change	-11.3%	23.6%	5.0%	-1.4%	-80.3%	-2.0%

**Figure 7: Delaware Nursing Home Discharges, 2011-2021, by Facility Type and County**



As in previous years, in 2021, discharge destination varied greatly by facility type (Table 7). Over half (55.1%) of all patients discharged from private facilities in 2021 returned to their own home or a relative's home. Compared to private nursing home discharges, a larger percentage of patients discharged from public facilities were discharged due to death (83.3% vs. 11.0%, respectively).

**Table 7: Number (Percentage) of Delaware Nursing Home Discharges, by Facility Type and Discharge Destination, 2021**

Facility Type	Discharge Destination							
	Own or Relative's Home	Hospital	Assisted Living	Private LTCF	State Owned LTCF	Death	Other	Total
Private	4,724 (55.1%)	2,117 (24.7%)	381 (4.4%)	296 (3.5%)	9 (0.1%)	944 (11.0%)	100 (1.2%)	8,571 (100%)
Public	0 (0.0%)	0 (13.1%)	2 (16.7%)	0 (0.0%)	0 (0.0%)	10 (83.3%)	0 (0.0%)	12 (100.0%)
All Facilities	4,724 (55.0%)	2,117 (24.7%)	383 (4.5%)	296 (3.4%)	9 (0.1%)	954 (11.1%)	100 (1.2%)	8,583 (100.0%)

Discharge statistics mirror admission statistics in terms of patient race and age (Table 8; Figure 8). White patients accounted for 76.5% of Delaware nursing home discharges in 2021. Black patients and patients



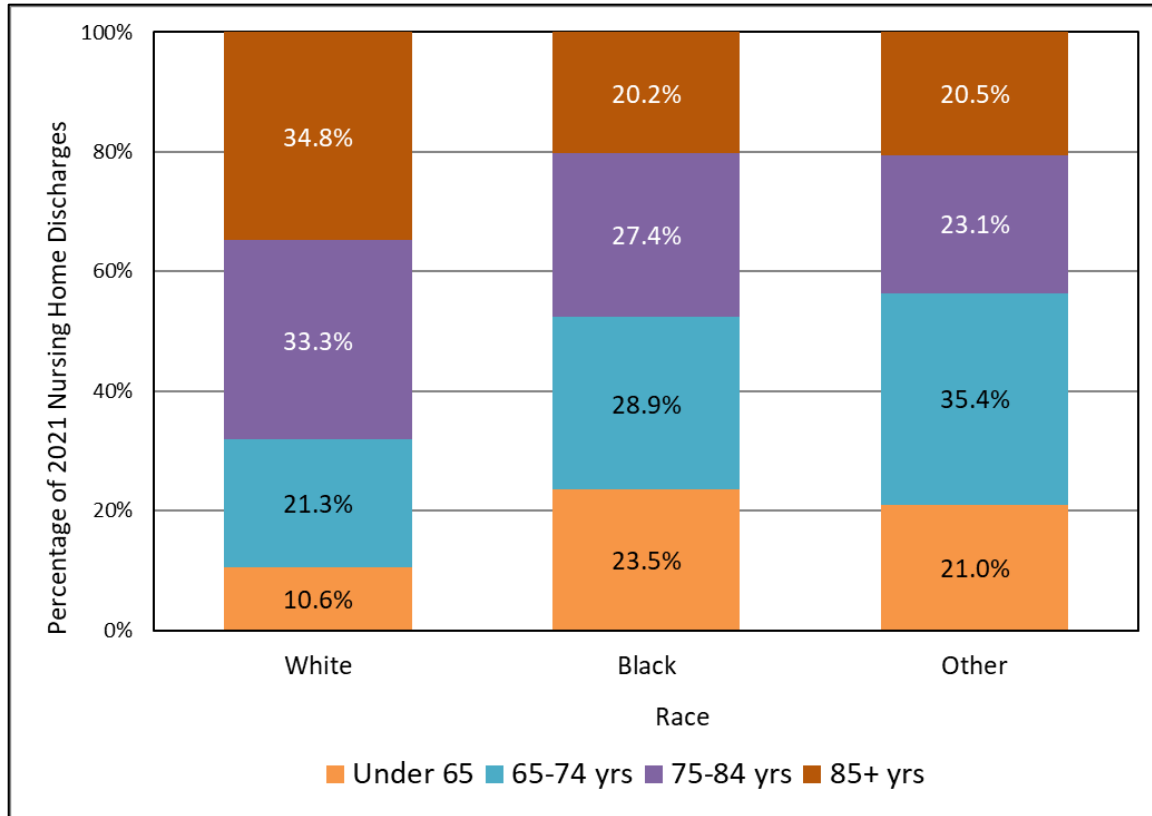
of other races accounted for 21.2% and 2.3% of 2021 nursing home discharges, respectively. Individuals 75-84 years and 85 years+ accounted for 31.8% and 31.4% of 2021 Delaware nursing home discharges, respectively. Nearly one-quarter (23.3%) of 2021 nursing home discharges were individuals ages 65-74. The youngest category of nursing home patients – those under age 65 – accounted for the remaining 13.5% of 2021 discharges.

Relative to White patients, comparatively larger percentages of Black patients and patients of other races were under the age of 74 (Figure 8). Fifty-two percent of Black discharges and 56.4% of discharges among patients of other races represented individuals ages 74 or younger; in comparison, just 31.9% of White discharges were patients ages 74 or younger. Accordingly, patients ages 85 and older accounted for a higher percentage of White discharges (34.8%) relative to Black discharges (20.2%) and discharges among patients of other races (20.5%).

**Table 8: Number (Percentage) of Delaware Nursing Home Discharges, by Race and Age, 2021**

Race	Age				Total (by race)
	Under 65	65-74 yrs.	75-84 yrs.	85+ yrs.	
White	694 (10.6%)	1,401 (21.3%)	2,190 (33.3%)	2,285 (34.8%)	6,570 (100.0%)
Black	427 (23.5%)	525 (28.9%)	498 (27.4%)	368 (20.2%)	1,818 (100.0%)
Other	41 (21.0%)	69 (35.4%)	45 (23.1%)	40 (20.5%)	195 (100.0%)
Total (by age)	1,162 (13.5%)	1,996 (23.3%)	2,732 (31.8%)	2,693 (31.4%)	8,583 (100.0%)

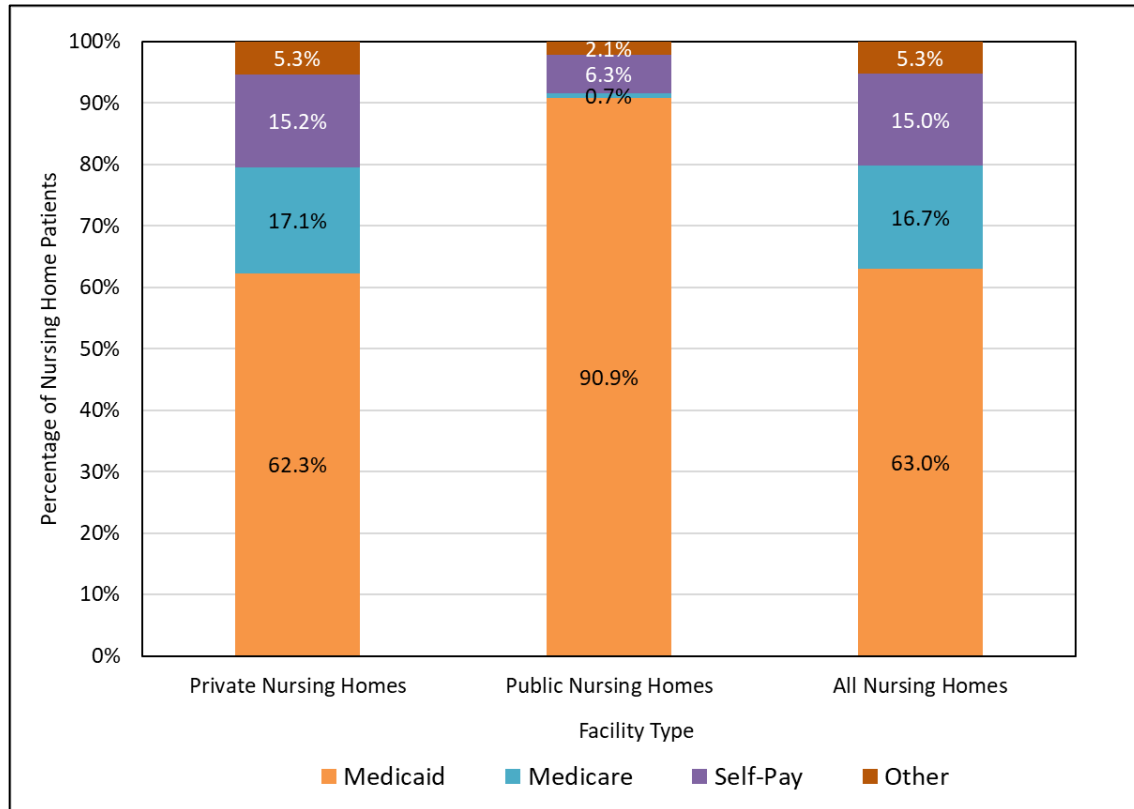
**Figure 8: Racial Breakdown of Delaware Nursing Home Discharges, 2021, by Age**



## SOURCE OF PAYMENT

Patient payment source for nursing home care varied by type of facility (Figure 9). In 2021, the majority of private and public nursing home patients used Medicaid as a source of payment, though a larger percentage of public nursing home patients used Medicaid as a source of payment relative to private nursing home patients (90.9% vs. 62.3%, respectively). In 2021, 17.1% of private Delaware nursing home patients used Medicare as a source of payment compared to just 0.7% of public nursing home patients. Fifteen percent of private nursing home residents and 6.3% of public nursing home patients self-paid for their care. A different payment source was utilized by 5.3% of private nursing home patients and 2.1% of public nursing home patients.

**Figure 9: Percentage of Delaware Nursing Home Patients by Payment Source and Facility Type, 2021**



## PART 2: 2021 FACILITY-LEVEL NURSING HOME UTILIZATION STATISTICS

**Table 9**  
**Total Billable Patient Days by Facility, 2021**

Nursing Home	2021 Patient Days	Nursing Home	2021 Patient Days
<b>New Castle County (Private)</b>		<b>Kent County (Private)</b>	
Cadia Rehab Broadmeadow	38,608	Cadia Rehab Capitol	35,222
Cadia Rehab Pike Creek	38,178	Complete Care at Silver Lake	35,627
Cadia Rehab Silverside	40,028	Courtland Manor	18,910
Churchman Village	23,832	Delaware Veterans Home	19,219
Complete Care at Brackenville	33,433	Pinnacle Health & Rehab	44,869
Complete Care at Hillside	35,426	The Center at Eden Hill	17,685
Forwood Manor	7,662	Westminster Village Health Center	19,968
Foulk Manor North	13,190	<b>Kent County (Private) Total</b>	<b>191,500</b>
Foulk Manor South	6,116		
Gilpin Hall	29,718	<b>Sussex County (Private)</b>	
Jeanne Jugan Residence	10,589	Atlantic Shores Rehab & Health Center	57,503
Kentmere Rehab & Healthcare	33,461	Cadia Rehab Renaissance	36,270
Kutz Rehab & Nursing	23,035	Country Rest Home	16,630
Millcroft Nursing Home	20,673	Delmar Nursing & Rehab	24,646
New Castle Health & Rehab	39,161	Harbor Health Care	43,272
Newark Manor	21,354	Harrison Senior Living of Georgetown	32,943
Parkview Nursing & Rehab	43,704	Lofland Park Center	33,165
ProMedica Pike Creek	29,805	Milford Center	39,284
ProMedica Wilmington	40,285	Polaris Healthcare and Rehab	7,787
Regal Heights Healthcare & Rehab	53,285	Seaford Center	36,049
Regency Healthcare & Rehab	27,594	The Moorings at Lewes	10,887
Shipley Manor Health Care	16,170	WillowBrooke Court Manor House	12,513
Springs Rehabilitation at Brandywine	44,577	<b>Sussex County (Private) Total</b>	<b>350,949</b>
Stonegates	12,094		
Weston Senior Living Center	5,374	<b>Total Private Facilities</b>	<b>1,253,362</b>
WillowBrooke Court Cokesbury Village	11,457		
WillowBrooke Court Country House	12,104	<b>Public Facilities</b>	
<b>New Castle County (Private) Total</b>	<b>710,913</b>	DE Hosp for Chronically Ill	32,286
		<b>Total All Facilities</b>	<b>1,285,648</b>

**Table 10**  
**Billable Patient Days, Licensed Bed Counts, Licensed Bed Days, and Occupancy**  
**Rates by Facility, Type, and County, 2021**

<b>Nursing Home</b>	<b>Billable Patient Days 2021</b>	<b>Number of Licensed Beds 2021</b>	<b>Licensed Bed Days 2021</b>	<b>Occupancy Rate 2021</b>
<b>New Castle County (Private)</b>				
Cadia Rehab Broadmeadow	38,608	120	43,800	88.1%
Cadia Rehab Pike Creek	38,178	122	46,776	81.6%
Cadia Rehab Silverside	40,028	128	46,720	85.7%
Churchman Village	23,832	101	36,865	64.6%
Complete Care at Brackenville	33,433	104	37,960	88.1%
Complete Care at Hillside	35,426	106	38,690	91.6%
Forwood Manor	7,662	72	13,032	58.8%
Foulk Manor North	13,190	46	16,790	78.6%
Foulk Manor South	6,116	46	16,790	36.4%
Gilpin Hall	29,718	96	35,040	84.8%
Jeanne Jugan Residence	10,589	40	14,600	72.5%
Kentmere Rehab & Healthcare	33,461	104	37,960	88.1%
Kutz Rehab & Nursing	23,035	90	32,850	70.1%
Millcroft Nursing Home	20,673	110	40,150	51.5%
New Castle Health & Rehab	39,161	120	43,800	89.4%
Newark Manor	21,354	67	24,455	87.3%
Parkview Nursing & Rehab	43,704	150	54,750	79.8%
ProMedica Pike Creek	29,805	177	64,605	46.1%
ProMedica Wilmington	40,285	138	50,370	80.0%
Regal Heights Healthcare & Rehab	53,285	172	62,780	84.9%
Regency Healthcare & Rehab	27,594	100	36,500	75.6%
Shipley Manor Health Care	16,170	82	29,930	54.0%
Springs Rehabilitation at Brandywine	44,577	169	61,685	72.3%
Stonegates	12,094	49	17,885	67.6%
Weston Senior Living Center	5,374	19	6,935	77.5%
WillowBrooke Court Cokesbury Village	11,457	45	16,425	69.8%
WillowBrooke Court Country House	12,104	48	17,520	69.1%
<b>New Castle County (Private) Total</b>	<b>710,913</b>	<b>2,621</b>	<b>945,663</b>	<b>75.2%</b>

**Table 10**  
**(Continued)**  
**Billable Patient Days, Licensed Bed Counts, Licensed Bed Days, and Occupancy**  
**Rates by Facility, Type, and County, 2021**

<b>Nursing Home</b>	<b>Billable Patient Days 2021</b>	<b>Number of Licensed Beds 2021</b>	<b>Licensed Bed Days 2021</b>	<b>Occupancy Rate 2021</b>
<b>Kent County (Private)</b>				
Cadia Rehab Capitol	35,222	120	43,800	80.4%
Complete Care at Silver Lake	35,627	120	43,800	81.3%
Courtland Manor	18,910	70	25,550	74.0%
Delaware Veterans Home	19,219	144	52,560	36.6%
Pinnacle Health & Rehab	44,869	151	55,115	81.4%
The Center at Eden Hill	17,685	80	29,200	60.6%
Westminster Village Health Center	19,968	75	27,375	72.9%
<b>Kent County (Private) Total</b>	<b>191,500</b>	<b>760</b>	<b>277,400</b>	<b>69.0%</b>
<b>Sussex County (Private)</b>				
Atlantic Shores Rehab & Health Center	57,503	181	66,065	87.0%
Cadia Rehab Renaissance	36,270	130	47,450	76.4%
Country Rest Home	16,630	56	20,440	81.4%
Delmar Nursing & Rehab	24,646	99	37,035	66.5%
Harbor Health Care	43,272	179	65,335	66.2%
Harrison Senior Living of Georgetown	32,943	139	50,735	64.9%
Lofland Park Center	33,165	110	40,150	82.6%
Milford Center	39,284	136	49,640	79.1%
Polaris Healthcare and Rehab	7,787	86	13,150	59.2%
Seaford Center	36,049	124	45,260	79.6%
The Moorings at Lewes	10,887	40	14,600	74.6%
WillowBrooke Court Manor House	12,513	60	21,900	57.1%
<b>Sussex County (Private) Total</b>	<b>350,949</b>	<b>1,340</b>	<b>471,760</b>	<b>74.4%</b>
<b>Total Private Facilities</b>	<b>1,253,362</b>	<b>4,721</b>	<b>1,694,823</b>	<b>74.0%</b>
<b>Public Facilities</b>				
DE Hosp for Chronically Ill	32,286	205	74,825	43.1%
<b>Total All Facilities</b>	<b>1,285,648</b>	<b>4,926</b>	<b>1,769,648</b>	<b>72.6%</b>

Occupancy rates for individual facilities are calculated as the ratio of Billable Patient Days and Licensed Bed Days. Licensed Bed Days are calculated as (Number of Licensed beds (as of December of the reporting year))\*(Total days the facility was open during the reporting year).

**Table 11**  
**Patient Source of Payment by Facility, Type, and County, 2021**

<b>Nursing Home</b>	<b>Medicaid</b>	<b>Medicare</b>	<b>Self-Pay</b>	<b>Other*</b>	<b>Total</b>
<b>New Castle County (Private)</b>					
Cadia Rehab Broadmeadow	58.4%	24.2%	14.2%	3.2%	100.0%
Cadia Rehab Pike Creek	53.1%	42.4%	3.1%	1.3%	100.0%
Cadia Rehab Silverside	44.5%	36.1%	8.8%	10.5%	100.0%
Churchman Village	44.4%	37.0%	11.9%	6.6%	100.0%
Complete Care at Brackenville	58.2%	13.9%	23.2%	4.7%	100.0%
Complete Care at Hillside	82.8%	10.8%	0.8%	5.6%	100.0%
Forwood Manor	34.5%	28.5%	33.7%	3.2%	100.0%
Foulk Manor North	29.6%	0.0%	70.4%	0.0%	100.0%
Foulk Manor South	0.0%	0.0%	100.0%	0.0%	100.0%
Gilpin Hall	90.2%	3.6%	3.7%	2.6%	100.0%
Jeanne Jugan Residence	78.3%	0.0%	21.7%	0.0%	100.0%
Kentmere Rehab & Healthcare	57.0%	17.7%	19.6%	5.7%	100.0%
Kutz Rehab & Nursing	68.1%	8.1%	23.8%	0.0%	100.0%
Millcroft Nursing Home	43.6%	15.6%	38.3%	2.5%	100.0%
New Castle Health & Rehab	88.1%	4.9%	4.1%	2.9%	100.0%
Newark Manor	91.8%	0.0%	8.2%	0.0%	100.0%
Parkview Nursing & Rehab	83.0%	6.7%	6.8%	3.5%	100.0%
ProMedica Pike Creek	71.7%	14.8%	6.7%	6.7%	100.0%
ProMedica Wilmington	64.4%	24.3%	6.7%	4.6%	100.0%
Regal Heights Healthcare & Rehab	67.1%	5.7%	9.2%	18.0%	100.0%
Regency Healthcare & Rehab	76.0%	11.0%	10.9%	2.1%	100.0%
Shipley Manor Health Care	39.2%	39.5%	19.5%	1.8%	100.0%
Springs Rehabilitation at Brandywine	73.2%	21.2%	3.9%	1.6%	100.0%
Stonegates	0.0%	6.3%	93.7%	0.0%	100.0%
Weston Senior Living Center	60.0%	24.2%	15.8%	0.0%	100.0%
WillowBrooke Court Cokesbury Village	0.0%	8.2%	88.6%	3.3%	100.0%
WillowBrooke Court Country House	0.0%	7.9%	89.1%	3.0%	100.0%
<b>New Castle County (Private) Total</b>	<b>62.3%</b>	<b>16.5%</b>	<b>16.6%</b>	<b>4.6%</b>	<b>100.0%</b>

**Table 11**  
**(Continued)**  
**Patient Source of Payment, by Facility, Type, and County, 2021**

<b>Nursing Home</b>	<b>Medicaid</b>	<b>Medicare</b>	<b>Self-Pay</b>	<b>Other*</b>	<b>Total</b>
<b>Kent County (Private)</b>					
Cadia Rehab Capitol	64.5%	19.3%	9.1%	7.1%	100.0%
Complete Care at Silver Lake	84.2%	8.9%	2.8%	4.1%	100.0%
Courtland Manor	87.2%	0.0%	12.2%	0.6%	100.0%
Delaware Veterans Home	36.7%	0.8%	32.9%	29.7%	100.0%
Pinnacle Health & Rehab	74.4%	14.7%	4.2%	6.8%	100.0%
The Center at Eden Hill	0.0%	82.7%	0.7%	16.6%	100.0%
Westminster Village Health Center	33.4%	26.7%	30.9%	8.9%	100.0%
<b>Kent County (Private) Total</b>	<b>59.6%</b>	<b>19.6%</b>	<b>11.7%</b>	<b>9.2%</b>	<b>100.0%</b>
<b>Sussex County (Private)</b>					
Atlantic Shores Rehab & Health Center	71.5%	19.0%	4.9%	4.6%	100.0%
Cadia Rehab Renaissance	53.4%	34.8%	8.5%	3.3%	100.0%
Country Rest Home	0.0%	0.0%	100.0%	0.0%	100.0%
Delmar Nursing & Rehab	73.8%	17.1%	7.9%	1.2%	100.0%
Harbor Health Care	69.3%	14.7%	7.6%	8.4%	100.0%
Harrison Senior Living of Georgetown	67.2%	20.5%	6.5%	6.1%	100.3%
Lofland Park Center	75.5%	16.0%	4.3%	4.3%	100.0%
Milford Center	78.3%	11.5%	3.5%	6.8%	100.0%
Polaris Healthcare and Rehab	58.7%	25.4%	9.5%	6.4%	100.0%
Seaford Center	83.3%	9.5%	3.6%	3.6%	100.0%
The Moorings at Lewes	13.7%	20.2%	64.5%	1.6%	100.0%
WillowBrooke Court Manor House	17.4%	13.3%	65.6%	3.6%	100.0%
<b>Sussex County (Private) Total</b>	<b>64.0%</b>	<b>17.1%</b>	<b>14.3%</b>	<b>4.7%</b>	<b>100.0%</b>
<b>Total Private Facilities</b>	<b>62.3%</b>	<b>17.1%</b>	<b>15.2%</b>	<b>5.3%</b>	<b>100.0%</b>
<b>Public Facilities</b>					
DE Hosp for Chronically Ill	90.9%	0.7%	6.3%	2.1%	100.0%
<b>Total All Facilities</b>	<b>63.0%</b>	<b>16.7%</b>	<b>15.0%</b>	<b>5.3%</b>	<b>100.0%</b>

Notes: The "other" payment category includes charitable pay, partial pay, private insurance, Veterans benefits, out-of-state Medicaid, and, in some cases, patients for whom medical status was pending at admissions. Percentages are based on end of month reports on the number of patients by source of payment.



**Table 12**  
**Number of Admissions by Age, Gender, County and Facility, 2021**

<b>Nursing Home</b>	<b>&lt;65 Male</b>	<b>&lt; 65 Female</b>	<b>65-74 Male</b>	<b>65-74 Female</b>	<b>75-84 Male</b>	<b>75-84 Female</b>	<b>85+ Male</b>	<b>85+ Female</b>	<b>Total Male</b>	<b>Total Female</b>	<b>Total M+F</b>
<b>New Castle County (Private)</b>											
Cadia Rehab Broadmeadow	13	22	38	47	54	86	30	76	135	231	366
Cadia Rehab Pike Creek	46	25	55	64	79	114	73	83	253	286	539
Cadia Rehab Silverside	27	13	50	62	93	84	47	85	217	244	461
Churchman Village	12	28	8	52	20	84	32	88	72	252	324
Complete Care at Brackenville	24	15	30	28	21	47	28	58	103	148	251
Complete Care at Hillside	53	38	50	38	40	35	22	21	165	132	297
Forwood Manor	0	0	2	7	15	16	15	40	32	63	95
Foulk Manor North	0	0	0	2	11	13	11	16	22	31	53
Foulk Manor South	0	0	3	0	4	1	4	10	11	11	22
Gilpin Hall	1	1	0	1	4	7	3	11	8	20	28
Jeanne Jugan Residence	0	0	0	0	3	1	0	8	3	9	12
Kentmere Rehab & Healthcare	2	0	12	35	31	42	23	89	68	166	234
Kutz Rehab & Nursing	1	0	4	2	14	9	16	28	35	39	74
Millcroft Nursing Home	0	2	4	7	8	18	30	47	42	74	116
New Castle Health & Rehab	28	13	24	32	18	24	11	29	81	98	179
Newark Manor	0	1	3	7	2	2	1	6	6	16	22
Parkview Nursing & Rehab	6	22	15	21	11	36	12	38	44	117	161
ProMedica Pike Creek	16	39	41	34	37	53	16	56	110	182	292
ProMedica Wilmington	39	37	43	52	35	42	22	44	139	175	314
Regal Heights Healthcare & Rehab	11	6	34	20	36	28	31	25	112	79	191
Regency Healthcare & Rehab	37	20	17	22	25	11	9	21	88	74	162
Shipley Manor Health Care	0	5	0	5	17	7	38	38	55	55	110
Springs Rehabilitation at Brandywine	7	11	56	37	39	80	29	48	131	176	307
Stonegates	0	0	1	0	7	3	12	19	20	22	42
Weston Senior Living Center	3	0	0	3	9	6	0	6	12	15	27
WillowBrooke Court Cokesbury Village	0	0	0	0	7	6	12	28	19	34	53
WillowBrooke Court Country House	0	0	0	0	4	24	12	28	16	52	68
<b>New Castle County (Private) Total</b>	<b>326</b>	<b>298</b>	<b>490</b>	<b>578</b>	<b>644</b>	<b>879</b>	<b>539</b>	<b>1,046</b>	<b>1,999</b>	<b>2,801</b>	<b>4,800</b>

**Table 12**  
**(Continued)**  
**Number of Admissions by Age, Gender, County and Facility, 2021**

Nursing Home	<65 Male	< 65 Female	65-74 Male	65-74 Female	75-84 Male	75-84 Female	85+ Male	85+ Female	Total Male	Total Female	Total M+F
<b>Kent County (Private)</b>											
Cadia Rehab Capitol	24	18	35	40	35	46	21	32	115	136	251
Complete Care at Silver Lake	19	29	28	32	28	39	21	32	96	132	228
Courtland Manor	0	1	1	1	1	3	0	10	2	15	17
Delaware Veterans Home	2	0	8	0	6	0	7	1	23	1	24
Pinnacle Health & Rehab	60	33	47	62	41	40	14	23	162	158	320
The Center at Eden Hill	18	24	58	85	105	124	82	218	263	451	714
Westminster Village Health Center	4	12	20	29	22	39	28	65	74	145	219
<b>Kent County (Private) Total</b>	<b>127</b>	<b>117</b>	<b>197</b>	<b>249</b>	<b>238</b>	<b>291</b>	<b>173</b>	<b>381</b>	<b>735</b>	<b>1,038</b>	<b>1,773</b>
<b>Sussex County (Private)</b>											
Atlantic Shores Rehab & Health Center	37	33	55	56	57	74	32	49	181	212	393
Cadia Rehab Renaissance	11	9	37	43	76	75	47	86	171	213	384
Country Rest Home	1	2	3	6	12	14	22	21	38	43	81
Delmar Nursing & Rehab	2	8	8	14	12	20	8	13	30	55	85
Harbor Health Care	12	6	19	29	56	56	27	52	114	143	257
Harrison Senior Living of Georgetown	6	13	51	80	38	39	9	8	104	140	244
Lofland Park Center	19	22	36	46	35	39	27	41	117	148	265
Milford Center	83	48	72	60	58	63	31	58	244	229	473
Polaris Healthcare and Rehab	7	3	10	21	12	17	7	28	36	69	105
Seaford Center	25	29	19	30	33	26	12	15	89	100	189
The Moorings at Lewes	1	0	5	11	9	19	22	50	37	80	117
WillowBrooke Court Manor House	1	2	3	6	9	20	15	33	28	61	89
<b>Sussex County (Private) Total</b>	<b>205</b>	<b>175</b>	<b>318</b>	<b>402</b>	<b>407</b>	<b>462</b>	<b>259</b>	<b>454</b>	<b>1,189</b>	<b>1,493</b>	<b>2,682</b>
<b>Total Private Facilities</b>	<b>658</b>	<b>590</b>	<b>1,005</b>	<b>1,229</b>	<b>1,289</b>	<b>1,632</b>	<b>971</b>	<b>1,881</b>	<b>3,923</b>	<b>5,332</b>	<b>9,255</b>
<b>Public Facilities</b>											
DE Hosp for Chronically Ill	3	0	1	1	0	0	0	0	4	1	5
<b>Total All Facilities</b>	<b>661</b>	<b>590</b>	<b>1,006</b>	<b>1,230</b>	<b>1,289</b>	<b>1,632</b>	<b>971</b>	<b>1,881</b>	<b>3,927</b>	<b>5,333</b>	<b>9,260</b>

**Table 13**  
**Percentage of Admissions by Age, County and Facility, 2021**

<b>Nursing Home</b>	<b>Under 65</b>	<b>65-74</b>	<b>75-84</b>	<b>85+</b>	<b>Total</b>
<b>New Castle County (Private)</b>					
Cadia Rehab Broadmeadow	9.6%	23.2%	38.3%	29.0%	100.0%
Cadia Rehab Pike Creek	13.2%	22.1%	35.8%	28.9%	100.0%
Cadia Rehab Silverside	8.7%	24.3%	38.4%	28.6%	100.0%
Churchman Village	12.3%	18.5%	32.1%	37.0%	100.0%
Complete Care at Brackenville	15.5%	23.1%	27.1%	34.3%	100.0%
Complete Care at Hillside	30.6%	29.6%	25.3%	14.5%	100.0%
Forwood Manor	0.0%	9.5%	32.6%	57.9%	100.0%
Foult Manor North	0.0%	3.8%	45.3%	50.9%	100.0%
Foult Manor South	0.0%	13.6%	22.7%	63.6%	100.0%
Gilpin Hall	7.1%	3.6%	39.3%	50.0%	100.0%
Jeanne Jugan Residence	0.0%	0.0%	33.3%	66.7%	100.0%
Kentmere Rehab & Healthcare	0.9%	20.1%	31.2%	47.9%	100.0%
Kutz Rehab & Nursing	1.4%	8.1%	31.1%	59.5%	100.0%
Millcroft Nursing Home	1.7%	9.5%	22.4%	66.4%	100.0%
New Castle Health & Rehab	22.9%	31.3%	23.5%	22.3%	100.0%
Newark Manor	4.5%	45.5%	18.2%	31.8%	100.0%
Parkview Nursing & Rehab	17.4%	22.4%	29.2%	31.1%	100.0%
ProMedica Pike Creek	18.8%	25.7%	30.8%	24.7%	100.0%
ProMedica Wilmington	24.2%	30.3%	24.5%	21.0%	100.0%
Regal Heights Healthcare & Rehab	8.9%	28.3%	33.5%	29.3%	100.0%
Regency Healthcare & Rehab	35.2%	24.1%	22.2%	18.5%	100.0%
Shipley Manor Health Care	4.5%	4.5%	21.8%	69.1%	100.0%
Springs Rehabilitation at Brandywine	5.9%	30.3%	38.8%	25.1%	100.0%
Stonegates	0.0%	2.4%	23.8%	73.8%	100.0%
Weston Senior Living Center	11.1%	11.1%	55.6%	22.2%	100.0%
WillowBrooke Court Cokesbury Village	0.0%	0.0%	24.5%	75.5%	100.0%
WillowBrooke Court Country House	0.0%	0.0%	41.2%	58.8%	100.0%
<b>New Castle County (Private) Total</b>	<b>13.0%</b>	<b>22.3%</b>	<b>31.7%</b>	<b>33.0%</b>	<b>100.0%</b>

**Table 13**  
**(Continued)**  
**Percentage of Admissions by Age, County and Facility, 2021**

<b>Nursing Home</b>	<b>Under 65</b>	<b>65-74</b>	<b>75-84</b>	<b>85+</b>	<b>Total</b>
<b>Kent County (Private)</b>					
Cadia Rehab Capitol	16.7%	29.9%	32.3%	21.1%	100.0%
Complete Care at Silver Lake	21.1%	26.3%	29.4%	23.2%	100.0%
Courtland Manor	5.9%	11.8%	23.5%	58.8%	100.0%
Delaware Veterans Home	8.3%	33.3%	25.0%	33.3%	100.0%
Pinnacle Health & Rehab	29.1%	34.1%	25.3%	11.6%	100.0%
The Center at Eden Hill	5.9%	20.0%	32.1%	42.0%	100.0%
Westminster Village Health Center	7.3%	22.4%	27.9%	42.5%	100.0%
<b>Kent County (Private) Total</b>	<b>13.8%</b>	<b>25.2%</b>	<b>29.8%</b>	<b>31.2%</b>	<b>100.0%</b>
<b>Sussex County (Private)</b>					
Atlantic Shores Rehab & Health Center	17.8%	28.2%	33.3%	20.6%	100.0%
Cadia Rehab Renaissance	5.2%	20.8%	39.3%	34.6%	100.0%
Country Rest Home	3.7%	11.1%	32.1%	53.1%	100.0%
Delmar Nursing & Rehab	11.8%	25.9%	37.6%	24.7%	100.0%
Harbor Health Care	7.0%	18.7%	43.6%	30.7%	100.0%
Harrison Senior Living of Georgetown	7.8%	53.7%	31.6%	7.0%	100.0%
Lofland Park Center	15.5%	30.9%	27.9%	25.7%	100.0%
Milford Center	27.7%	27.9%	25.6%	18.8%	100.0%
Polaris Healthcare and Rehab	9.5%	29.5%	27.6%	33.3%	100.0%
Seaford Center	28.6%	25.9%	31.2%	14.3%	100.0%
The Moorings at Lewes	0.9%	13.7%	23.9%	61.5%	100.0%
WillowBrooke Court Manor House	3.4%	10.1%	32.6%	53.9%	100.0%
<b>Sussex County (Private) Total</b>	<b>14.2%</b>	<b>26.8%</b>	<b>32.4%</b>	<b>26.6%</b>	<b>100.0%</b>
<b>Total Private Facilities</b>	<b>13.5%</b>	<b>24.1%</b>	<b>31.6%</b>	<b>30.8%</b>	<b>100.0%</b>
<b>Public Facilities</b>					
DE Hosp for Chronically Ill	60.0%	40.0%	0.0%	0.0%	100.0%
<b>Total All Facilities</b>	<b>13.5%</b>	<b>24.1%</b>	<b>31.5%</b>	<b>30.8%</b>	<b>100.0%</b>

**Table 14**  
**Percentage of Admissions by Gender, County and Facility, 2021**

<b>Nursing Home</b>	<b>Male</b>	<b>Female</b>	<b>Nursing Home</b>	<b>Male</b>	<b>Female</b>
<b>New Castle County (Private)</b>			<b>Kent County (Private)</b>		
Cadia Rehab Broadmeadow	36.9%	63.1%	Cadia Rehab Capitol	45.8%	54.2%
Cadia Rehab Pike Creek	46.9%	53.1%	Complete Care at Silver Lake	42.1%	57.9%
Cadia Rehab Silverside	47.1%	52.9%	Courtland Manor	11.8%	88.2%
Churchman Village	22.2%	77.8%	Delaware Veterans Home	95.8%	4.2%
Complete Care at Brackenville	41.0%	59.0%	Pinnacle Health & Rehab	50.6%	49.4%
Complete Care at Hillside	55.6%	44.4%	The Center at Eden Hill	36.8%	63.2%
Forwood Manor	33.7%	66.3%	Westminster Village Health Center	33.8%	66.2%
Foulk Manor North	41.5%	58.5%	<b>Kent County (Private) Total</b>	<b>41.5%</b>	<b>58.5%</b>
Foulk Manor South	50.0%	50.0%			
Gilpin Hall	28.6%	71.4%	<b>Sussex County (Private)</b>		
Jeanne Jugan Residence	25.0%	75.0%	Atlantic Shores Rehab & Health Center	46.1%	53.9%
Kentmere Rehab & Healthcare	29.1%	70.9%	Cadia Rehab Renaissance	44.5%	55.5%
Kutz Rehab & Nursing	47.3%	52.7%	Country Rest Home	46.9%	53.1%
Millcroft Nursing Home	36.2%	63.8%	Delmar Nursing & Rehab	35.3%	64.7%
New Castle Health & Rehab	45.3%	54.7%	Harbor Health Care	44.4%	55.6%
Newark Manor	27.3%	72.7%	Harrison Senior Living of Georgetown	42.6%	57.4%
Parkview Nursing & Rehab	27.3%	72.7%	Lofland Park Center	44.2%	55.8%
ProMedica Pike Creek	37.7%	62.3%	Milford Center	51.6%	48.4%
ProMedica Wilmington	44.3%	55.7%	Polaris Healthcare and Rehab	34.3%	65.7%
Regal Heights Healthcare & Rehab	58.6%	41.4%	Seaford Center	47.1%	52.9%
Regency Healthcare & Rehab	54.3%	45.7%	The Moorings at Lewes	31.6%	68.4%
Shipley Manor Health Care	50.0%	50.0%	WillowBrooke Court Manor House	31.5%	68.5%
Springs Rehabilitation at Brandywine	42.7%	57.3%	<b>Sussex County (Private) Total</b>	<b>44.3%</b>	<b>55.7%</b>
Stonegates	47.6%	52.4%			
Weston Senior Living Center	44.4%	55.6%	<b>Total Private Facilities</b>	<b>42.4%</b>	<b>57.6%</b>
WillowBrooke Court Cokesbury Village	35.8%	64.2%			
WillowBrooke Court Country House	23.5%	76.5%	<b>Public Facilities</b>		
<b>New Castle County (Private) Total</b>	<b>41.6%</b>	<b>58.4%</b>	DE Hosp for Chronically Ill	80.0%	20.0%
			<b>Total All Facilities</b>	<b>42.4%</b>	<b>57.6%</b>

**Table 15**  
**Number of White Admissions by Age, Gender, County and Facility, 2021**

Nursing Home	<65 Male	< 65 Female	65-74 Male	65-74 Female	75-84 Male	75-84 Female	85+ Male	85+ Female	Total Male	Total Female	Total M+F
<b>New Castle County (Private)</b>											
Cadia Rehab Broadmeadow	8	17	36	34	43	71	27	68	114	190	304
Cadia Rehab Pike Creek	19	23	42	47	73	104	57	70	191	244	435
Cadia Rehab Silverside	16	6	36	45	69	68	40	67	161	186	347
Churchman Village	8	12	8	36	16	80	20	84	52	212	264
Complete Care at Brackenville	15	12	22	25	15	41	22	49	74	127	201
Complete Care at Hillside	29	15	21	16	18	17	10	7	78	55	133
Forwood Manor	0	0	2	6	12	14	12	39	26	59	85
Foulk Manor North	0	0	0	2	11	13	11	16	22	31	53
Foulk Manor South	0	0	2	0	4	1	4	9	10	10	20
Gilpin Hall	1	1	0	0	2	7	2	8	5	16	21
Jeanne Jugan Residence	0	0	0	0	3	1	0	6	3	7	10
Kentmere Rehab & Healthcare	2	0	10	27	28	35	22	73	62	135	197
Kutz Rehab & Nursing	1	0	4	2	14	8	15	27	34	37	71
Millcroft Nursing Home	0	2	4	6	7	14	28	46	39	68	107
New Castle Health & Rehab	11	8	13	20	11	8	6	14	41	50	91
Newark Manor	0	1	3	7	2	2	1	5	6	15	21
Parkview Nursing & Rehab	4	11	10	7	10	28	8	34	32	80	112
ProMedica Pike Creek	8	28	34	22	27	38	10	44	79	132	211
ProMedica Wilmington	18	17	32	24	27	34	21	38	98	113	211
Regal Heights Healthcare & Rehab	6	2	14	15	18	18	23	20	61	55	116
Regency Healthcare & Rehab	14	10	6	8	11	6	2	13	33	37	70
Shipley Manor Health Care	0	5	0	5	17	7	24	31	41	48	89
Springs Rehabilitation at Brandywine	7	9	33	26	25	54	22	32	87	121	208
Stonegates	0	0	1	0	7	3	12	18	20	21	41
Weston Senior Living Center	3	0	0	3	3	3	0	6	6	12	18
WillowBrooke Court Cokesbury Village	0	0	0	0	7	6	12	28	19	34	53
WillowBrooke Court Country House	0	0	0	0	4	24	12	28	16	52	68
<b>New Castle County (Private) Total</b>	<b>170</b>	<b>179</b>	<b>333</b>	<b>383</b>	<b>484</b>	<b>705</b>	<b>423</b>	<b>880</b>	<b>1,410</b>	<b>2,147</b>	<b>3,557</b>

**Table 15  
(Continued)**

**Number of White Admissions by Age, Gender, County and Facility, 2021**

<b>Nursing Home</b>	<b>&lt;65 Male</b>	<b>&lt; 65 Female</b>	<b>65-74 Male</b>	<b>65-74 Female</b>	<b>75-84 Male</b>	<b>75-84 Female</b>	<b>85+ Male</b>	<b>85+ Female</b>	<b>Total Male</b>	<b>Total Female</b>	<b>Total M+F</b>
<b>Kent County (Private)</b>											
Cadia Rehab Capitol	14	17	23	30	21	28	12	17	70	92	162
Complete Care at Silver Lake	13	17	21	25	22	33	17	25	73	100	173
Courtland Manor	0	1	0	1	1	1	0	8	1	11	12
Delaware Veterans Home	1	0	7	0	6	0	7	1	21	1	22
Pinnacle Health & Rehab	39	27	37	40	29	30	12	17	117	114	231
The Center at Eden Hill	9	11	37	50	77	96	56	177	179	334	513
Westminster Village Health Center	2	6	13	17	19	31	26	58	60	112	172
<b>Kent County (Private) Total</b>	<b>78</b>	<b>79</b>	<b>138</b>	<b>163</b>	<b>175</b>	<b>219</b>	<b>130</b>	<b>303</b>	<b>521</b>	<b>764</b>	<b>1,285</b>
<b>Sussex County (Private)</b>											
Atlantic Shores Rehab & Health Center	29	29	46	50	46	70	27	44	148	193	341
Cadia Rehab Renaissance	11	7	34	40	73	70	43	81	161	198	359
Country Rest Home	1	2	2	6	10	13	22	21	35	42	77
Delmar Nursing & Rehab	1	5	8	11	8	19	7	13	24	48	72
Harbor Health Care	8	5	16	29	56	54	26	52	106	140	246
Harrison Senior Living of Georgetown	3	7	24	49	24	29	8	7	59	92	151
Lofland Park Center	15	18	26	38	32	36	27	37	100	129	229
Milford Center	66	22	50	46	44	45	25	47	185	160	345
Polaris Healthcare and Rehab	7	1	10	20	12	16	6	28	35	65	100
Seaford Center	20	20	16	25	25	21	11	12	72	78	150
The Moorings at Lewes	1	0	5	11	9	19	22	50	37	80	117
WillowBrooke Court Manor House	0	1	2	4	9	20	15	32	26	57	83
<b>Sussex County (Private) Total</b>	<b>162</b>	<b>117</b>	<b>239</b>	<b>329</b>	<b>348</b>	<b>412</b>	<b>239</b>	<b>424</b>	<b>988</b>	<b>1,282</b>	<b>2,270</b>
<b>Total Private Facilities</b>	<b>410</b>	<b>375</b>	<b>710</b>	<b>875</b>	<b>1,007</b>	<b>1,336</b>	<b>792</b>	<b>1,607</b>	<b>2,919</b>	<b>4,193</b>	<b>7,112</b>
<b>Public Facilities</b>											
DE Hosp for Chronically Ill	1	0	1	1	0	0	0	0	2	1	3
<b>Total All Facilities</b>	<b>411</b>	<b>375</b>	<b>711</b>	<b>876</b>	<b>1,007</b>	<b>1,336</b>	<b>792</b>	<b>1,607</b>	<b>2,921</b>	<b>4,194</b>	<b>7,115</b>

**Table 16**  
**Number of Black Admissions by Age, Gender, County and Facility, 2021**

Nursing Home	<65 Male	< 65 Female	65-74 Male	65-74 Female	75-84 Male	75-84 Female	85+ Male	85+ Female	Total Male	Total Female	Total M+F
<b>New Castle County (Private)</b>											
Cadia Rehab Broadmeadow	4	4	2	13	9	13	3	8	18	38	56
Cadia Rehab Pike Creek	27	2	7	15	3	9	13	13	50	39	89
Cadia Rehab Silverside	6	7	11	16	21	15	7	16	45	54	99
Churchman Village	0	16	0	16	4	4	8	4	12	40	52
Complete Care at Brackenville	9	0	4	3	3	3	3	7	19	13	32
Complete Care at Hillside	23	23	26	22	20	17	12	14	81	76	157
Forwood Manor	0	0	0	1	3	2	2	1	5	4	9
Foult Manor North	0	0	0	0	0	0	0	0	0	0	0
Foult Manor South	0	0	1	0	0	0	0	1	1	1	2
Gilpin Hall	0	0	0	1	2	0	1	3	3	4	7
Jeanne Jugan Residence	0	0	0	0	0	0	0	1	0	1	1
Kentmere Rehab & Healthcare	0	0	2	5	3	7	1	16	6	28	34
Kutz Rehab & Nursing	0	0	0	0	0	1	0	0	0	1	1
Millcroft Nursing Home	0	0	0	1	0	4	1	1	1	6	7
New Castle Health & Rehab	16	5	11	11	5	14	5	13	37	43	80
Newark Manor	0	0	0	0	0	0	0	1	0	1	1
Parkview Nursing & Rehab	2	11	4	13	1	8	4	3	11	35	46
ProMedica Pike Creek	5	12	5	11	10	10	6	9	26	42	68
ProMedica Wilmington	20	18	7	27	7	7	1	6	35	58	93
Regal Heights Healthcare & Rehab	5	1	20	5	14	9	8	5	47	20	67
Regency Healthcare & Rehab	19	8	11	14	12	5	7	8	49	35	84
Shipley Manor Health Care	0	0	0	0	0	0	14	7	14	7	21
Springs Rehabilitation at Brandywine	0	2	15	9	13	23	6	14	34	48	82
Stonegates	0	0	0	0	0	0	0	0	0	0	0
Weston Senior Living Center	0	0	0	0	6	3	0	0	6	3	9
WillowBrooke Court Cokesbury Village	0	0	0	0	0	0	0	0	0	0	0
WillowBrooke Court Country House	0	0	0	0	0	0	0	0	0	0	0
<b>New Castle County (Private) Total</b>	<b>136</b>	<b>109</b>	<b>126</b>	<b>183</b>	<b>136</b>	<b>154</b>	<b>102</b>	<b>151</b>	<b>500</b>	<b>597</b>	<b>1,097</b>



**Table 16  
(Continued)**

**Number of Black Admissions by Age, Gender, County and Facility, 2021**

<b>Nursing Home</b>	<b>&lt;65 Male</b>	<b>&lt; 65 Female</b>	<b>65-74 Male</b>	<b>65-74 Female</b>	<b>75-84 Male</b>	<b>75-84 Female</b>	<b>85+ Male</b>	<b>85+ Female</b>	<b>Total Male</b>	<b>Total Female</b>	<b>Total M+F</b>
<b>Kent County (Private)</b>											
Cadia Rehab Capitol	8	1	7	8	11	13	7	10	33	32	65
Complete Care at Silver Lake	6	12	7	7	6	5	4	7	23	31	54
Courtland Manor	0	0	0	0	0	2	0	0	0	2	2
Delaware Veterans Home	1	0	1	0	0	0	0	0	2	0	2
Pinnacle Health & Rehab	21	6	10	22	9	8	2	5	42	41	83
The Center at Eden Hill	5	12	21	34	28	26	24	39	78	111	189
Westminster Village Health Center	2	6	6	12	3	6	2	5	13	29	42
<b>Kent County (Private) Total</b>	<b>43</b>	<b>37</b>	<b>52</b>	<b>83</b>	<b>57</b>	<b>60</b>	<b>39</b>	<b>66</b>	<b>191</b>	<b>246</b>	<b>437</b>
<b>Sussex County (Private)</b>											
Atlantic Shores Rehab & Health Center	7	4	9	3	11	4	5	5	32	16	48
Cadia Rehab Renaissance	0	2	3	3	3	5	3	4	9	14	23
Country Rest Home	0	0	1	0	2	1	0	0	3	1	4
Delmar Nursing & Rehab	1	3	0	3	4	1	0	0	5	7	12
Harbor Health Care	4	1	3	0	0	1	1	0	8	2	10
Harrison Senior Living of Georgetown	3	4	27	27	13	10	1	1	44	42	86
Lofland Park Center	3	4	9	8	3	3	0	2	15	17	32
Milford Center	14	24	20	14	13	18	6	11	53	67	120
Polaris Healthcare and Rehab	0	2	0	1	0	1	1	0	1	4	5
Seaford Center	5	9	3	5	8	5	1	3	17	22	39
The Moorings at Lewes	0	0	0	0	0	0	0	0	0	0	0
WillowBrooke Court Manor House	1	1	1	2	0	0	0	1	2	4	6
<b>Sussex County (Private) Total</b>	<b>38</b>	<b>54</b>	<b>76</b>	<b>66</b>	<b>57</b>	<b>49</b>	<b>18</b>	<b>27</b>	<b>189</b>	<b>196</b>	<b>385</b>
<b>Total Private Facilities</b>	<b>217</b>	<b>200</b>	<b>254</b>	<b>332</b>	<b>250</b>	<b>263</b>	<b>159</b>	<b>244</b>	<b>880</b>	<b>1,039</b>	<b>1,919</b>
<b>Public Facilities</b>											
DE Hosp for Chronically Ill	1	0	0	0	0	0	0	0	1	0	1
<b>Total All Facilities</b>	<b>218</b>	<b>200</b>	<b>254</b>	<b>332</b>	<b>250</b>	<b>263</b>	<b>159</b>	<b>244</b>	<b>881</b>	<b>1,039</b>	<b>1,920</b>

**Table 17**  
**Number of Admissions by Source of Referral, 2021**

<b>Nursing Home</b>	<b>Own or Relative's Home</b>	<b>Hospital</b>	<b>Assisted Living</b>	<b>Private LTCF</b>	<b>State Owned LTCF</b>	<b>Other</b>	<b>Total</b>
<b>New Castle County (Private)</b>							
Cadia Rehab Broadmeadow	9	347	0	10	0	0	366
Cadia Rehab Pike Creek	4	534	0	1	0	0	539
Cadia Rehab Silverside	5	442	0	14	0	0	461
Churchman Village	4	320	0	0	0	0	324
Complete Care at Brackenville	7	224	4	12	0	4	251
Complete Care at Hillside	17	279	1	0	0	0	297
Forwood Manor	3	91	1	0	0	0	95
Foulk Manor North	9	13	11	18	0	2	53
Foulk Manor South	5	10	2	5	0	0	22
Gilpin Hall	14	6	6	0	0	2	28
Jeanne Jugan Residence	6	2	0	0	0	4	12
Kentmere Rehab & Healthcare	6	216	0	12	0	0	234
Kutz Rehab & Nursing	13	49	3	9	0	0	74
Millcroft Nursing Home	11	86	10	8	0	1	116
New Castle Health & Rehab	33	123	2	21	0	0	179
Newark Manor	11	2	2	4	0	3	22
Parkview Nursing & Rehab	15	135	6	4	0	1	161
ProMedica Pike Creek	0	291	0	0	0	1	292
ProMedica Wilmington	4	310	0	0	0	0	314
Regal Heights Healthcare & Rehab	18	167	1	4	0	1	191
Regency Healthcare & Rehab	24	132	0	6	0	0	162
Shipley Manor Health Care	0	110	0	0	0	0	110
Springs Rehabilitation at Brandywine	14	280	5	8	0	0	307
Stonegates	19	22	1	0	0	0	42
Weston Senior Living Center	0	27	0	0	0	0	27
WillowBrooke Court Cokesbury Village	12	33	7	0	0	1	53
WillowBrooke Court Country House	8	28	0	0	0	32	68
<b>New Castle County (Private) Total</b>	<b>271</b>	<b>4,279</b>	<b>62</b>	<b>136</b>	<b>0</b>	<b>52</b>	<b>4,800</b>

**Table 17**  
**(Continued)**  
**Number of Admissions by Source of Referral, 2021**

Nursing Home	Own or Relative's Home	Hospital	Assisted Living	Private LTCF	State Owned LTCF	Other	Total
<b>Kent County (Private)</b>							
Cadia Rehab Capitol	19	215	0	15	0	2	251
Complete Care at Silver Lake	1	218	0	9	0	0	228
Courtland Manor	11	2	0	4	0	0	17
Delaware Veterans Home	8	5	2	8	0	1	24
Pinnacle Health & Rehab	2	306	0	12	0	0	320
The Center at Eden Hill	17	694	1	1	0	1	714
Westminster Village Health Center	23	160	22	5	0	9	219
<b>Kent County (Private) Total</b>	<b>81</b>	<b>1,600</b>	<b>25</b>	<b>54</b>	<b>0</b>	<b>13</b>	<b>1,773</b>
<b>Sussex County (Private)</b>							
Atlantic Shores Rehab & Health Center	3	382	2	4	2	0	393
Cadia Rehab Renaissance	14	357	0	12	1	0	384
Country Rest Home	45	17	2	6	8	3	81
Delmar Nursing & Rehab	10	69	1	3	0	2	85
Harbor Health Care	22	225	4	6	0	0	257
Harrison Senior Living of Georgetown	29	210	3	1	1	0	244
Lofland Park Center	16	241	1	7	0	0	265
Milford Center	14	428	2	29	0	0	473
Polaris Healthcare and Rehab	11	91	0	2	0	1	105
Seaford Center	2	178	0	9	0	0	189
The Moorings at Lewes	13	93	10	1	0	0	117
WillowBrooke Court Manor House	10	62	9	7	1	0	89
<b>Sussex County (Private) Total</b>	<b>189</b>	<b>2,353</b>	<b>34</b>	<b>87</b>	<b>13</b>	<b>6</b>	<b>2,682</b>
<b>Total Private Facilities</b>	<b>541</b>	<b>8,232</b>	<b>121</b>	<b>277</b>	<b>13</b>	<b>71</b>	<b>9,255</b>
<b>Public Facilities</b>							
DE Hosp for Chronically Ill	1	2	1	0	1	0	5
<b>Total All Facilities</b>	<b>542</b>	<b>8,234</b>	<b>122</b>	<b>277</b>	<b>14</b>	<b>71</b>	<b>9,260</b>

**Table 18**  
**Percentage of Admissions by Source of Referral, County and Facility, 2021**

<b>Nursing Home</b>	<b>Own or Relative's Home</b>	<b>Hospital</b>	<b>Assisted Living</b>	<b>Private LTCF</b>	<b>State Owned LTCF</b>	<b>Other</b>	<b>Total</b>
<b>New Castle County (Private)</b>							
Cadia Rehab Broadmeadow	2.5%	94.8%	0.0%	2.7%	0.0%	0.0%	100.0%
Cadia Rehab Pike Creek	0.7%	99.1%	0.0%	0.2%	0.0%	0.0%	100.0%
Cadia Rehab Silverside	1.1%	95.9%	0.0%	3.0%	0.0%	0.0%	100.0%
Churchman Village	1.2%	98.8%	0.0%	0.0%	0.0%	0.0%	100.0%
Complete Care at Brackenville	2.8%	89.2%	1.6%	4.8%	0.0%	1.6%	100.0%
Complete Care at Hillside	5.7%	93.9%	0.3%	0.0%	0.0%	0.0%	100.0%
Forwood Manor	3.2%	95.8%	1.1%	0.0%	0.0%	0.0%	100.0%
Foulk Manor North	17.0%	24.5%	20.8%	34.0%	0.0%	3.8%	100.0%
Foulk Manor South	22.7%	45.5%	9.1%	22.7%	0.0%	0.0%	100.0%
Gilpin Hall	50.0%	21.4%	21.4%	0.0%	0.0%	7.1%	100.0%
Jeanne Jugan Residence	50.0%	16.7%	0.0%	0.0%	0.0%	33.3%	100.0%
Kentmere Rehab & Healthcare	2.6%	92.3%	0.0%	5.1%	0.0%	0.0%	100.0%
Kutz Rehab & Nursing	17.6%	66.2%	4.1%	12.2%	0.0%	0.0%	100.0%
Millcroft Nursing Home	9.5%	74.1%	8.6%	6.9%	0.0%	0.9%	100.0%
New Castle Health & Rehab	18.4%	68.7%	1.1%	11.7%	0.0%	0.0%	100.0%
Newark Manor	50.0%	9.1%	9.1%	18.2%	0.0%	13.6%	100.0%
Parkview Nursing & Rehab	9.3%	83.9%	3.7%	2.5%	0.0%	0.6%	100.0%
ProMedica Pike Creek	0.0%	99.7%	0.0%	0.0%	0.0%	0.3%	100.0%
ProMedica Wilmington	1.3%	98.7%	0.0%	0.0%	0.0%	0.0%	100.0%
Regal Heights Healthcare & Rehab	9.4%	87.4%	0.5%	2.1%	0.0%	0.5%	100.0%
Regency Healthcare & Rehab	14.8%	81.5%	0.0%	3.7%	0.0%	0.0%	100.0%
Shipley Manor Health Care	0.0%	100.0%	0.0%	0.0%	0.0%	0.0%	100.0%
Springs Rehabilitation at Brandywine	4.6%	91.2%	1.6%	2.6%	0.0%	0.0%	100.0%
Stonegates	45.2%	52.4%	2.4%	0.0%	0.0%	0.0%	100.0%
Weston Senior Living Center	0.0%	100.0%	0.0%	0.0%	0.0%	0.0%	100.0%
WillowBrooke Court Cokesbury Village	22.6%	62.3%	13.2%	0.0%	0.0%	1.9%	100.0%
WillowBrooke Court Country House	11.8%	41.2%	0.0%	0.0%	0.0%	47.1%	100.0%
<b>New Castle County (Private) Total</b>	<b>5.6%</b>	<b>89.1%</b>	<b>1.3%</b>	<b>2.8%</b>	<b>0.0%</b>	<b>1.1%</b>	<b>100.0%</b>

**Table 18**  
**(Continued)**  
**Percentage of Admissions by Source of Referral, County and Facility, 2021**

Nursing Home	Own or Relative's Home	Hospital	Assisted Living	Private LTCF	State Owned LTCF	Other	Total
<b>Kent County (Private)</b>							
Cadia Rehab Capitol	7.6%	85.7%	0.0%	6.0%	0.0%	0.8%	100.0%
Complete Care at Silver Lake	0.4%	95.6%	0.0%	3.9%	0.0%	0.0%	100.0%
Courtland Manor	64.7%	11.8%	0.0%	23.5%	0.0%	0.0%	100.0%
Delaware Veterans Home	33.3%	20.8%	8.3%	33.3%	0.0%	4.2%	100.0%
Pinnacle Health & Rehab	0.6%	95.6%	0.0%	3.8%	0.0%	0.0%	100.0%
The Center at Eden Hill	2.4%	97.2%	0.1%	0.1%	0.0%	0.1%	100.0%
Westminster Village Health Center	10.5%	73.1%	10.0%	2.3%	0.0%	4.1%	100.0%
<b>Kent County (Private) Total</b>	<b>4.6%</b>	<b>90.2%</b>	<b>1.4%</b>	<b>3.0%</b>	<b>0.0%</b>	<b>0.7%</b>	<b>100.0%</b>
<b>Sussex County (Private)</b>							
Atlantic Shores Rehab & Health Center	0.8%	97.2%	0.5%	1.0%	0.5%	0.0%	100.0%
Cadia Rehab Renaissance	3.6%	93.0%	0.0%	3.1%	0.3%	0.0%	100.0%
Country Rest Home	55.6%	21.0%	2.5%	7.4%	9.9%	3.7%	100.0%
Delmar Nursing & Rehab	11.8%	81.2%	1.2%	3.5%	0.0%	2.4%	100.0%
Harbor Health Care	8.6%	87.5%	1.6%	2.3%	0.0%	0.0%	100.0%
Harrison Senior Living of Georgetown	11.9%	86.1%	1.2%	0.4%	0.4%	0.0%	100.0%
Lofland Park Center	6.0%	90.9%	0.4%	2.6%	0.0%	0.0%	100.0%
Milford Center	3.0%	90.5%	0.4%	6.1%	0.0%	0.0%	100.0%
Polaris Healthcare and Rehab	10.5%	86.7%	0.0%	1.9%	0.0%	1.0%	100.0%
Seaford Center	1.1%	94.2%	0.0%	4.8%	0.0%	0.0%	100.0%
The Moorings at Lewes	11.1%	79.5%	8.5%	0.9%	0.0%	0.0%	100.0%
WillowBrooke Court Manor House	11.2%	69.7%	10.1%	7.9%	1.1%	0.0%	100.0%
<b>Sussex County (Private) Total</b>	<b>7.0%</b>	<b>87.7%</b>	<b>1.3%</b>	<b>3.2%</b>	<b>0.5%</b>	<b>0.2%</b>	<b>100.0%</b>
<b>Total Private Facilities</b>	<b>5.8%</b>	<b>88.9%</b>	<b>1.3%</b>	<b>3.0%</b>	<b>0.1%</b>	<b>0.8%</b>	<b>100.0%</b>
<b>Public Facilities</b>							
DE Hosp for Chronically Ill	20.0%	40.0%	20.0%	0.0%	20.0%	0.0%	100.0%
<b>Total All Facilities</b>	<b>5.9%</b>	<b>88.9%</b>	<b>1.3%</b>	<b>3.0%</b>	<b>0.2%</b>	<b>0.8%</b>	<b>100.0%</b>

**Table 19**  
**Number of Admissions by County and State of Residence, 2021**

<b>Nursing Home</b>	<b>NCC</b>	<b>Kent</b>	<b>Sussex</b>	<b>MD</b>	<b>NJ</b>	<b>PA</b>	<b>Other</b>	<b>Total</b>
<b>New Castle County (Private)</b>								
Cadia Rehab Broadmeadow	326	15	4	16	0	4	1	366
Cadia Rehab Pike Creek	522	3	0	3	1	10	0	539
Cadia Rehab Silverside	450	2	2	0	0	6	1	461
Churchman Village	304	0	0	12	0	8	0	324
Complete Care at Brackenville	227	5	3	2	2	12	0	251
Complete Care at Hillside	280	0	2	3	0	12	0	297
Forwood Manor	95	0	0	0	0	0	0	95
Foulk Manor North	52	1	0	0	0	0	0	53
Foulk Manor South	22	0	0	0	0	0	0	22
Gilpin Hall	27	0	1	0	0	0	0	28
Jeanne Jugan Residence	7	1	1	0	0	1	2	12
Kentmere Rehab & Healthcare	225	2	3	0	1	3	0	234
Kutz Rehab & Nursing	74	0	0	0	0	0	0	74
Millcroft Nursing Home	110	0	0	2	1	1	2	116
New Castle Health & Rehab	175	0	0	0	0	4	0	179
Newark Manor	20	1	0	1	0	0	0	22
Parkview Nursing & Rehab	155	1	0	1	1	3	0	161
ProMedica Pike Creek	290	0	0	0	0	2	0	292
ProMedica Wilmington	295	4	2	1	2	4	6	314
Regal Heights Healthcare & Rehab	187	0	2	1	0	1	0	191
Regency Healthcare & Rehab	156	2	0	4	0	0	0	162
Shipley Manor Health Care	110	0	0	0	0	0	0	110
Springs Rehabilitation at Brandywine	290	1	0	4	2	10	0	307
Stonegates	42	0	0	0	0	0	0	42
Weston Senior Living Center	27	0	0	0	0	0	0	27
WillowBrooke Court Cokesbury Village	53	0	0	0	0	0	0	53
WillowBrooke Court Country House	60	0	0	4	0	4	0	68
<b>New Castle County (Private) Total</b>	<b>4,581</b>	<b>38</b>	<b>20</b>	<b>54</b>	<b>10</b>	<b>85</b>	<b>12</b>	<b>4,800</b>

**Table 19**  
**(Continued)**  
**Number of Admissions by County and State of Residence, 2021**

Nursing Home	NCC	Kent	Sussex	MD	NJ	PA	Other	Total
<b>Kent County (Private)</b>								
Cadia Rehab Capitol	27	213	5	3	0	3	0	251
Complete Care at Silver Lake	7	205	7	6	1	1	1	228
Courtland Manor	0	15	2	0	0	0	0	17
Delaware Veterans Home	3	9	12	0	0	0	0	24
Pinnacle Health & Rehab	79	211	24	2	0	4	0	320
The Center at Eden Hill	20	630	45	9	1	6	3	714
Westminster Village Health Center	8	200	6	4	1	0	0	219
<b>Kent County (Private) Total</b>	<b>144</b>	<b>1,483</b>	<b>101</b>	<b>24</b>	<b>3</b>	<b>14</b>	<b>4</b>	<b>1,773</b>
<b>Sussex County (Private)</b>								
Atlantic Shores Rehab & Health Center	24	16	267	80	0	6	0	393
Cadia Rehab Renaissance	21	5	334	18	0	6	0	384
Country Rest Home	5	13	53	7	0	0	3	81
Delmar Nursing & Rehab	1	1	37	46	0	0	0	85
Harbor Health Care	4	2	247	4	0	0	0	257
Harrison Senior Living of Georgetown	1	25	213	3	2	0	0	244
Lofland Park Center	2	12	231	16	0	2	2	265
Milford Center	35	130	274	25	0	8	1	473
Polaris Healthcare and Rehab	4	22	79	0	0	0	0	105
Seaford Center	9	14	138	22	0	6	0	189
The Moorings at Lewes	0	2	114	0	0	0	1	117
WillowBrooke Court Manor House	2	1	69	12	1	3	1	89
<b>Sussex County (Private) Total</b>	<b>108</b>	<b>243</b>	<b>2,056</b>	<b>233</b>	<b>3</b>	<b>31</b>	<b>8</b>	<b>2,682</b>
<b>Total Private Facilities</b>	<b>4,833</b>	<b>1,764</b>	<b>2,177</b>	<b>311</b>	<b>16</b>	<b>130</b>	<b>24</b>	<b>9,255</b>
<b>Public Facilities</b>								
DE Hosp for Chronically Ill	3	0	1	0	0	1	0	5
<b>Total All Facilities</b>	<b>4,836</b>	<b>1,764</b>	<b>2,178</b>	<b>311</b>	<b>16</b>	<b>131</b>	<b>24</b>	<b>9,260</b>

**Table 20**  
**Percentage of Admissions by County and State of Residence, 2021**

Nursing Home	NCC	Kent	Sussex	MD	NJ	PA	Other	Total
<b>New Castle County (Private)</b>								
Cadia Rehab Broadmeadow	89.1%	4.1%	1.1%	4.4%	0.0%	1.1%	0.3%	100.0%
Cadia Rehab Pike Creek	96.8%	0.6%	0.0%	0.6%	0.2%	1.9%	0.0%	100.0%
Cadia Rehab Silverside	97.6%	0.4%	0.4%	0.0%	0.0%	1.3%	0.2%	100.0%
Churchman Village	93.8%	0.0%	0.0%	3.7%	0.0%	2.5%	0.0%	100.0%
Complete Care at Brackenville	90.4%	2.0%	1.2%	0.8%	0.8%	4.8%	0.0%	100.0%
Complete Care at Hillside	94.3%	0.0%	0.7%	1.0%	0.0%	4.0%	0.0%	100.0%
Forwood Manor	100.0%	0.0%	0.0%	0.0%	0.0%	0.0%	0.0%	100.0%
Foulk Manor North	98.1%	1.9%	0.0%	0.0%	0.0%	0.0%	0.0%	100.0%
Foulk Manor South	100.0%	0.0%	0.0%	0.0%	0.0%	0.0%	0.0%	100.0%
Gilpin Hall	96.4%	0.0%	3.6%	0.0%	0.0%	0.0%	0.0%	100.0%
Jeanne Jugan Residence	58.3%	8.3%	8.3%	0.0%	0.0%	8.3%	16.7%	100.0%
Kentmere Rehab & Healthcare	96.2%	0.9%	1.3%	0.0%	0.4%	1.3%	0.0%	100.0%
Kutz Rehab & Nursing	100.0%	0.0%	0.0%	0.0%	0.0%	0.0%	0.0%	100.0%
Millcroft Nursing Home	94.8%	0.0%	0.0%	1.7%	0.9%	0.9%	1.7%	100.0%
New Castle Health & Rehab	97.8%	0.0%	0.0%	0.0%	0.0%	2.2%	0.0%	100.0%
Newark Manor	90.9%	4.5%	0.0%	4.5%	0.0%	0.0%	0.0%	100.0%
Parkview Nursing & Rehab	96.3%	0.6%	0.0%	0.6%	0.6%	1.9%	0.0%	100.0%
ProMedica Pike Creek	99.3%	0.0%	0.0%	0.0%	0.0%	0.7%	0.0%	100.0%
ProMedica Wilmington	93.9%	1.3%	0.6%	0.3%	0.6%	1.3%	1.9%	100.0%
Regal Heights Healthcare & Rehab	97.9%	0.0%	1.0%	0.5%	0.0%	0.5%	0.0%	100.0%
Regency Healthcare & Rehab	96.3%	1.2%	0.0%	2.5%	0.0%	0.0%	0.0%	100.0%
Shipley Manor Health Care	100.0%	0.0%	0.0%	0.0%	0.0%	0.0%	0.0%	100.0%
Springs Rehabilitation at Brandywine	94.5%	0.3%	0.0%	1.3%	0.7%	3.3%	0.0%	100.0%
Stonegates	100.0%	0.0%	0.0%	0.0%	0.0%	0.0%	0.0%	100.0%
Weston Senior Living Center	100.0%	0.0%	0.0%	0.0%	0.0%	0.0%	0.0%	100.0%
WillowBrooke Court Cokesbury Village	100.0%	0.0%	0.0%	0.0%	0.0%	0.0%	0.0%	100.0%
WillowBrooke Court Country House	88.2%	0.0%	0.0%	5.9%	0.0%	5.9%	0.0%	100.0%
<b>New Castle County (Private) Total</b>	<b>95.4%</b>	<b>0.8%</b>	<b>0.4%</b>	<b>1.1%</b>	<b>0.2%</b>	<b>1.8%</b>	<b>0.3%</b>	<b>100.0%</b>



**Table 20**  
**(Continued)**  
**Percentage of Admissions by County and State of Residence, 2021**

<b>Nursing Home</b>	<b>NCC</b>	<b>Kent</b>	<b>Sussex</b>	<b>MD</b>	<b>NJ</b>	<b>PA</b>	<b>Other</b>	<b>Total</b>
<b>Kent County (Private)</b>								
Cadia Rehab Capitol	10.8%	84.9%	2.0%	1.2%	0.0%	1.2%	0.0%	100.0%
Complete Care at Silver Lake	3.1%	89.9%	3.1%	2.6%	0.4%	0.4%	0.4%	100.0%
Courtland Manor	0.0%	88.2%	11.8%	0.0%	0.0%	0.0%	0.0%	100.0%
Delaware Veterans Home	12.5%	37.5%	50.0%	0.0%	0.0%	0.0%	0.0%	100.0%
Pinnacle Health & Rehab	24.7%	65.9%	7.5%	0.6%	0.0%	1.3%	0.0%	100.0%
The Center at Eden Hill	2.8%	88.2%	6.3%	1.3%	0.1%	0.8%	0.4%	100.0%
Westminster Village Health Center	3.7%	91.3%	2.7%	1.8%	0.5%	0.0%	0.0%	100.0%
<b>Kent County (Private) Total</b>	<b>8.1%</b>	<b>83.6%</b>	<b>5.7%</b>	<b>1.4%</b>	<b>0.2%</b>	<b>0.8%</b>	<b>0.2%</b>	<b>100.0%</b>
<b>Sussex County (Private)</b>								
Atlantic Shores Rehab & Health Center	6.1%	4.1%	67.9%	20.4%	0.0%	1.5%	0.0%	100.0%
Cadia Rehab Renaissance	5.5%	1.3%	87.0%	4.7%	0.0%	1.6%	0.0%	100.0%
Country Rest Home	6.2%	16.0%	65.4%	8.6%	0.0%	0.0%	3.7%	100.0%
Delmar Nursing & Rehab	1.2%	1.2%	43.5%	54.1%	0.0%	0.0%	0.0%	100.0%
Harbor Health Care	1.6%	0.8%	96.1%	1.6%	0.0%	0.0%	0.0%	100.0%
Harrison Senior Living of Georgetown	0.4%	10.2%	87.3%	1.2%	0.8%	0.0%	0.0%	100.0%
Lofland Park Center	0.8%	4.5%	87.2%	6.0%	0.0%	0.8%	0.8%	100.0%
Milford Center	7.4%	27.5%	57.9%	5.3%	0.0%	1.7%	0.2%	100.0%
Polaris Healthcare and Rehab	3.8%	21.0%	75.2%	0.0%	0.0%	0.0%	0.0%	100.0%
Seaford Center	4.8%	7.4%	73.0%	11.6%	0.0%	3.2%	0.0%	100.0%
The Moorings at Lewes	0.0%	1.7%	97.4%	0.0%	0.0%	0.0%	0.9%	100.0%
WillowBrooke Court Manor House	2.2%	1.1%	77.5%	13.5%	1.1%	3.4%	1.1%	100.0%
<b>Sussex County (Private) Total</b>	<b>4.0%</b>	<b>9.1%</b>	<b>76.7%</b>	<b>8.7%</b>	<b>0.1%</b>	<b>1.2%</b>	<b>0.3%</b>	<b>100.0%</b>
<b>Total Private Facilities</b>	<b>52.2%</b>	<b>19.1%</b>	<b>23.5%</b>	<b>3.4%</b>	<b>0.2%</b>	<b>1.4%</b>	<b>0.3%</b>	<b>100.0%</b>
<b>Public Facilities</b>								
DE Hosp for Chronically Ill	60.0%	0.0%	20.0%	0.0%	0.0%	20.0%	0.0%	100.0%
<b>Total All Facilities</b>	<b>52.2%</b>	<b>19.0%</b>	<b>23.5%</b>	<b>3.4%</b>	<b>0.2%</b>	<b>1.4%</b>	<b>0.3%</b>	<b>100.0%</b>

**Table 21**  
**Number of Discharges by Age, Gender, County and Facility, 2021**

Nursing Home	<65 Male	< 65 Female	65-74 Male	65-74 Female	75-84 Male	75-84 Female	85+ Male	85+ Female	Total Male	Total Female	Total M+F
<b>New Castle County (Private)</b>											
Cadia Rehab Broadmeadow	11	19	28	38	49	76	31	76	119	209	328
Cadia Rehab Pike Creek	20	27	45	63	76	97	61	104	202	291	493
Cadia Rehab Silverside	21	12	38	50	76	69	42	73	177	204	381
Churchman Village	8	24	12	44	8	64	32	64	60	196	256
Complete Care at Brackenville	23	11	21	19	27	38	28	63	99	131	230
Complete Care at Hillside	51	38	52	37	39	30	28	27	170	132	302
Forwood Manor	0	0	3	6	12	20	19	40	34	66	100
Foulk Manor North	0	0	0	0	4	1	10	19	14	20	34
Foulk Manor South	0	2	5	0	6	4	5	17	16	23	39
Gilpin Hall	2	0	0	1	1	3	5	13	8	17	25
Jeanne Jugan Residence	0	0	0	0	1	1	4	2	5	3	8
Kentmere Rehab & Healthcare	2	0	11	26	35	39	19	75	67	140	207
Kutz Rehab & Nursing	0	0	3	3	12	11	17	36	32	50	82
Millcroft Nursing Home	0	0	2	4	8	10	29	45	39	59	98
New Castle Health & Rehab	18	4	12	16	10	15	10	12	50	47	97
Newark Manor	0	1	0	0	1	2	2	5	3	8	11
Parkview Nursing & Rehab	11	20	14	20	13	40	15	42	53	122	175
ProMedica Pike Creek	18	40	39	36	40	50	17	46	114	172	286
ProMedica Wilmington	44	38	60	65	39	61	46	52	189	216	405
Regal Heights Healthcare & Rehab	5	6	20	8	23	18	18	12	66	44	110
Regency Healthcare & Rehab	23	13	10	25	22	14	10	24	65	76	141
Shipley Manor Health Care	0	5	0	0	12	46	27	62	39	113	152
Springs Rehabilitation at Brandywine	6	8	55	30	35	66	30	52	126	156	282
Stonegates	0	0	0	0	5	5	11	20	16	25	41
Weston Senior Living Center	3	3	0	0	6	0	6	3	15	6	21
WillowBrooke Court Cokesbury Village	0	0	0	0	3	5	15	24	18	29	47
WillowBrooke Court Country House	0	0	0	0	8	20	20	20	28	40	68
<b>New Castle County (Private) Total</b>	<b>266</b>	<b>271</b>	<b>430</b>	<b>491</b>	<b>571</b>	<b>805</b>	<b>557</b>	<b>1,028</b>	<b>1,824</b>	<b>2,595</b>	<b>4,419</b>

**Table 21**  
**(Continued)**  
**Number of Discharges by Age, Gender, County and Facility, 2021**

Nursing Home	<65 Male	< 65 Female	65-74 Male	65-74 Female	75-84 Male	75-84 Female	85+ Male	85+ Female	Total Male	Total Female	Total M+F
<b>Kent County (Private)</b>											
Cadia Rehab Capitol	21	13	29	36	23	26	23	33	96	108	204
Complete Care at Silver Lake	18	34	31	30	25	32	14	33	88	129	217
Courtland Manor	0	1	2	2	0	5	0	13	2	21	23
Delaware Veterans Home	0	0	3	0	5	0	18	2	26	2	28
Pinnacle Health & Rehab	55	27	48	54	41	52	15	26	159	159	318
The Center at Eden Hill	40	44	68	113	115	139	56	120	279	416	695
Westminster Village Health Center	6	9	28	18	18	33	24	50	76	110	186
<b>Kent County (Private) Total</b>	<b>140</b>	<b>128</b>	<b>209</b>	<b>253</b>	<b>227</b>	<b>287</b>	<b>150</b>	<b>277</b>	<b>726</b>	<b>945</b>	<b>1,671</b>
<b>Sussex County (Private)</b>											
Atlantic Shores Rehab & Health Center	35	30	53	58	68	69	34	61	190	218	408
Cadia Rehab Renaissance	12	10	26	38	74	70	53	77	165	195	360
Country Rest Home	0	1	4	5	7	9	16	22	27	37	64
Delmar Nursing & Rehab	2	8	8	9	8	21	8	13	26	51	77
Harbor Health Care	10	4	21	21	51	70	26	48	108	143	251
Harrison Senior Living of Georgetown	13	11	42	64	26	21	5	8	86	104	190
Lofland Park Center	22	21	33	36	40	39	25	43	120	139	259
Milford Center	56	57	55	51	72	55	34	43	217	206	423
Polaris Healthcare and Rehab	5	3	6	17	12	10	6	25	29	55	84
Seaford Center	22	25	16	30	34	28	13	18	85	101	186
The Moorings at Lewes	2	0	5	8	12	16	18	42	37	66	103
WillowBrooke Court Manor House	1	2	2	2	8	19	16	26	27	49	76
<b>Sussex County (Private) Total</b>	<b>180</b>	<b>172</b>	<b>271</b>	<b>339</b>	<b>412</b>	<b>427</b>	<b>254</b>	<b>426</b>	<b>1,117</b>	<b>1,364</b>	<b>2,481</b>
<b>Total Private Facilities</b>	<b>586</b>	<b>571</b>	<b>910</b>	<b>1,083</b>	<b>1,210</b>	<b>1,519</b>	<b>961</b>	<b>1,731</b>	<b>3,667</b>	<b>4,904</b>	<b>8,571</b>
<b>Public Facilities</b>											
DE Hosp for Chronically Ill	4	1	2	1	1	2	0	1	7	5	12
<b>Total All Facilities</b>	<b>590</b>	<b>572</b>	<b>912</b>	<b>1,084</b>	<b>1,211</b>	<b>1,521</b>	<b>961</b>	<b>1,732</b>	<b>3,674</b>	<b>4,909</b>	<b>8,583</b>

**Table 22**  
**Percentage of Discharges by Age, Facility Type, County and Facility, 2021**

<b>Nursing Home</b>	<b>Under 65</b>	<b>65-74</b>	<b>75-84</b>	<b>85+</b>	<b>Total</b>
<b>New Castle County (Private)</b>					
Cadia Rehab Broadmeadow	9.1%	20.1%	38.1%	32.6%	100.0%
Cadia Rehab Pike Creek	9.5%	21.9%	35.1%	33.5%	100.0%
Cadia Rehab Silverside	8.7%	23.1%	38.1%	30.2%	100.0%
Churchman Village	12.5%	21.9%	28.1%	37.5%	100.0%
Complete Care at Brackenville	14.8%	17.4%	28.3%	39.6%	100.0%
Complete Care at Hillside	29.5%	29.5%	22.8%	18.2%	100.0%
Forwood Manor	0.0%	9.0%	32.0%	59.0%	100.0%
Foulk Manor North	0.0%	0.0%	14.7%	85.3%	100.0%
Foulk Manor South	5.1%	12.8%	25.6%	56.4%	100.0%
Gilpin Hall	8.0%	4.0%	16.0%	72.0%	100.0%
Jeanne Jugan Residence	0.0%	0.0%	25.0%	75.0%	100.0%
Kentmere Rehab & Healthcare	1.0%	17.9%	35.7%	45.4%	100.0%
Kutz Rehab & Nursing	0.0%	7.3%	28.0%	64.6%	100.0%
Millcroft Nursing Home	0.0%	6.1%	18.4%	75.5%	100.0%
New Castle Health & Rehab	22.7%	28.9%	25.8%	22.7%	100.0%
Newark Manor	9.1%	0.0%	27.3%	63.6%	100.0%
Parkview Nursing & Rehab	17.7%	19.4%	30.3%	32.6%	100.0%
ProMedica Pike Creek	20.3%	26.2%	31.5%	22.0%	100.0%
ProMedica Wilmington	20.2%	30.9%	24.7%	24.2%	100.0%
Regal Heights Healthcare & Rehab	10.0%	25.5%	37.3%	27.3%	100.0%
Regency Healthcare & Rehab	25.5%	24.8%	25.5%	24.1%	100.0%
Shipley Manor Health Care	3.3%	0.0%	38.2%	58.6%	100.0%
Springs Rehabilitation at Brandywine	5.0%	30.1%	35.8%	29.1%	100.0%
Stonegates	0.0%	0.0%	24.4%	75.6%	100.0%
Weston Senior Living Center	28.6%	0.0%	28.6%	42.9%	100.0%
WillowBrooke Court Cokesbury Village	0.0%	0.0%	17.0%	83.0%	100.0%
WillowBrooke Court Country House	0.0%	0.0%	41.2%	58.8%	100.0%
<b>New Castle County (Private) Total</b>	<b>12.2%</b>	<b>20.8%</b>	<b>31.1%</b>	<b>35.9%</b>	<b>100.0%</b>

**Table 22  
(Continued)**

**Percentage of Discharges by Age, Facility Type, County and Facility, 2021**

<b>Nursing Home</b>	<b>Under 65</b>	<b>65-74</b>	<b>75-84</b>	<b>85+</b>	<b>Total</b>
<b>Kent County (Private)</b>					
Cadia Rehab Capitol	16.7%	31.9%	24.0%	27.5%	100.0%
Complete Care at Silver Lake	24.0%	28.1%	26.3%	21.7%	100.0%
Courtland Manor	4.3%	17.4%	21.7%	56.5%	100.0%
Delaware Veterans Home	0.0%	10.7%	17.9%	71.4%	100.0%
Pinnacle Health & Rehab	25.8%	32.1%	29.2%	12.9%	100.0%
The Center at Eden Hill	12.1%	26.0%	36.5%	25.3%	100.0%
Westminster Village Health Center	8.1%	24.7%	27.4%	39.8%	100.0%
<b>Kent County (Private) Total</b>	<b>16.0%</b>	<b>27.6%</b>	<b>30.8%</b>	<b>25.6%</b>	<b>100.0%</b>
<b>Sussex County (Private)</b>					
Atlantic Shores Rehab & Health Center	15.9%	27.2%	33.6%	23.3%	100.0%
Cadia Rehab Renaissance	6.1%	17.8%	40.0%	36.1%	100.0%
Country Rest Home	1.6%	14.1%	25.0%	59.4%	100.0%
Delmar Nursing & Rehab	13.0%	22.1%	37.7%	27.3%	100.0%
Harbor Health Care	5.6%	16.7%	48.2%	29.5%	100.0%
Harrison Senior Living of Georgetown	12.6%	55.8%	24.7%	6.8%	100.0%
Lofland Park Center	16.6%	26.6%	30.5%	26.3%	100.0%
Milford Center	26.7%	25.1%	30.0%	18.2%	100.0%
Polaris Healthcare and Rehab	9.5%	27.4%	26.2%	36.9%	100.0%
Seaford Center	25.3%	24.7%	33.3%	16.7%	100.0%
The Moorings at Lewes	1.9%	12.6%	27.2%	58.3%	100.0%
WillowBrooke Court Manor House	3.9%	5.3%	35.5%	55.3%	100.0%
<b>Sussex County (Private) Total</b>	<b>14.2%</b>	<b>24.6%</b>	<b>33.8%</b>	<b>27.4%</b>	<b>100.0%</b>
<b>Total Private Facilities</b>	<b>13.5%</b>	<b>23.3%</b>	<b>31.8%</b>	<b>31.4%</b>	<b>100.0%</b>
<b>Public Facilities</b>					
DE Hosp for Chronically Ill	41.7%	25.0%	25.0%	8.3%	100.0%
<b>Total All Facilities</b>	<b>13.5%</b>	<b>23.3%</b>	<b>31.8%</b>	<b>31.4%</b>	<b>100.0%</b>

**Table 23**  
**Percentage of Discharges by Gender, Facility Type, County and Facility Name, 2021**

<b>Nursing Home</b>	<b>Male</b>	<b>Female</b>	<b>Nursing Home</b>	<b>Male</b>	<b>Female</b>
<b>New Castle County (Private)</b>			<b>Kent County (Private)</b>		
Cadia Rehab Broadmeadow	36.3%	63.7%	Cadia Rehab Capitol	47.1%	52.9%
Cadia Rehab Pike Creek	41.0%	59.0%	Complete Care at Silver Lake	40.6%	59.4%
Cadia Rehab Silverside	46.5%	53.5%	Courtland Manor	8.7%	91.3%
Churchman Village	23.4%	76.6%	Delaware Veterans Home	92.9%	7.1%
Complete Care at Brackenville	43.0%	57.0%	Pinnacle Health & Rehab	50.0%	50.0%
Complete Care at Hillside	56.3%	43.7%	The Center at Eden Hill	40.1%	59.9%
Forwood Manor	34.0%	66.0%	Westminster Village Health Center	40.9%	59.1%
Foulk Manor North	41.2%	58.8%	<b>Kent County (Private) Total</b>	<b>43.4%</b>	<b>56.6%</b>
Foulk Manor South	41.0%	59.0%			
Gilpin Hall	32.0%	68.0%	<b>Sussex County (Private)</b>		
Jeanne Jugan Residence	62.5%	37.5%	Atlantic Shores Rehab & Health Center	46.6%	53.4%
Kentmere Rehab & Healthcare	32.4%	67.6%	Cadia Rehab Renaissance	45.8%	54.2%
Kutz Rehab & Nursing	39.0%	61.0%	Country Rest Home	42.2%	57.8%
Millcroft Nursing Home	39.8%	60.2%	Delmar Nursing & Rehab	33.8%	66.2%
New Castle Health & Rehab	51.5%	48.5%	Harbor Health Care	43.0%	57.0%
Newark Manor	27.3%	72.7%	Harrison Senior Living of Georgetown	45.3%	54.7%
Parkview Nursing & Rehab	30.3%	69.7%	Lofland Park Center	46.3%	53.7%
ProMedica Pike Creek	39.9%	60.1%	Milford Center	51.3%	48.7%
ProMedica Wilmington	46.7%	53.3%	Polaris Healthcare and Rehab	34.5%	65.5%
Regal Heights Healthcare & Rehab	60.0%	40.0%	Seaford Center	45.7%	54.3%
Regency Healthcare & Rehab	46.1%	53.9%	The Moorings at Lewes	35.9%	64.1%
Shipley Manor Health Care	25.7%	74.3%	WillowBrooke Court Manor House	35.5%	64.5%
Springs Rehabilitation at Brandywine	44.7%	55.3%	<b>Sussex County (Private) Total</b>	<b>45.0%</b>	<b>55.0%</b>
Stonegates	39.0%	61.0%			
Weston Senior Living Center	71.4%	28.6%	<b>Total Private Facilities</b>	<b>42.8%</b>	<b>57.2%</b>
WillowBrooke Court Cokesbury Village	38.3%	61.7%			
WillowBrooke Court Country House	41.2%	58.8%	<b>Public Facilities</b>		
<b>New Castle County (Private) Total</b>	<b>41.3%</b>	<b>58.7%</b>	DE Hosp for Chronically Ill	<b>58.3%</b>	<b>41.7%</b>
			<b>Total All Facilities</b>	<b>42.8%</b>	<b>57.2%</b>

**Table 24**  
**Number of White Discharges by Age, Gender, County and Facility, 2021**

Nursing Home	<65 Male	< 65 Female	65-74 Male	65-74 Female	75-84 Male	75-84 Female	85+ Male	85+ Female	Total Male	Total Female	Total M+F
<b>New Castle County (Private)</b>											
Cadia Rehab Broadmeadow	5	15	26	31	40	63	27	67	98	176	274
Cadia Rehab Pike Creek	11	18	35	45	68	80	47	91	161	234	395
Cadia Rehab Silverside	12	4	25	41	61	48	32	63	130	156	286
Churchman Village	4	12	12	24	8	60	16	64	40	160	200
Complete Care at Brackenville	13	8	18	14	24	31	22	56	77	109	186
Complete Care at Hillside	21	12	23	13	16	17	16	10	76	52	128
Forwood Manor	0	0	3	6	10	17	16	39	29	62	91
Foulk Manor North	0	0	0	0	4	1	9	19	13	20	33
Foulk Manor South	0	2	5	0	6	3	4	17	15	22	37
Gilpin Hall	2	0	0	0	1	3	5	8	8	11	19
Jeanne Jugan Residence	0	0	0	0	1	1	4	2	5	3	8
Kentmere Rehab & Healthcare	2	0	9	16	28	31	18	61	57	108	165
Kutz Rehab & Nursing	0	0	3	2	12	9	17	32	32	43	75
Millcroft Nursing Home	0	0	2	3	7	8	26	42	35	53	88
New Castle Health & Rehab	6	3	6	11	3	8	8	6	23	28	51
Newark Manor	0	1	0	0	1	0	2	5	3	6	9
Parkview Nursing & Rehab	4	11	11	6	11	29	7	35	33	81	114
ProMedica Pike Creek	6	24	30	25	33	41	11	34	80	124	204
ProMedica Wilmington	22	17	31	38	29	46	34	35	116	136	252
Regal Heights Healthcare & Rehab	1	5	7	5	10	10	11	11	29	31	60
Regency Healthcare & Rehab	4	7	2	10	12	6	2	14	20	37	57
Shipley Manor Health Care	0	5	0	0	12	46	27	62	39	113	152
Springs Rehabilitation at Brandywine	6	7	31	23	18	39	20	39	75	108	183
Stonegates	0	0	0	0	5	5	11	20	16	25	41
Weston Senior Living Center	3	3	0	0	3	0	6	3	12	6	18
WillowBrooke Court Cokesbury Village	0	0	0	0	3	5	15	24	18	29	47
WillowBrooke Court Country House	0	0	0	0	8	20	20	20	28	40	68
<b>New Castle County (Private) Total</b>	<b>122</b>	<b>154</b>	<b>279</b>	<b>313</b>	<b>434</b>	<b>627</b>	<b>433</b>	<b>879</b>	<b>1,268</b>	<b>1,973</b>	<b>3,241</b>

**Table 24**  
**(Continued)**  
**Number of White Discharges by Age, Gender, County and Facility, 2021**

Nursing Home	<65 Male	< 65 Female	65-74 Male	65-74 Female	75-84 Male	75-84 Female	85+ Male	85+ Female	Total Male	Total Female	Total M+F
<b>Kent County (Private)</b>											
Cadia Rehab Capitol	12	10	18	27	13	19	14	22	57	78	135
Complete Care at Silver Lake	12	20	21	26	19	25	13	27	65	98	163
Courtland Manor	0	1	0	2	0	5	0	9	0	17	17
Delaware Veterans Home	0	0	3	0	5	0	17	2	25	2	27
Pinnacle Health & Rehab	43	23	33	39	27	44	12	18	115	124	239
The Center at Eden Hill	13	17	41	66	99	114	50	98	203	295	498
Westminster Village Health Center	3	6	24	12	16	23	22	48	65	89	154
<b>Kent County (Private) Total</b>	<b>83</b>	<b>77</b>	<b>140</b>	<b>172</b>	<b>179</b>	<b>230</b>	<b>128</b>	<b>224</b>	<b>530</b>	<b>703</b>	<b>1,233</b>
<b>Sussex County (Private)</b>											
Atlantic Shores Rehab & Health Center	29	27	44	51	52	66	29	54	154	198	352
Cadia Rehab Renaissance	12	7	26	36	69	64	48	73	155	180	335
Country Rest Home	0	1	4	5	4	9	16	22	24	37	61
Delmar Nursing & Rehab	1	4	8	8	5	20	6	12	20	44	64
Harbor Health Care	8	3	17	21	47	57	26	38	98	119	217
Harrison Senior Living of Georgetown	4	7	35	45	19	16	4	8	62	76	138
Lofland Park Center	17	18	23	31	36	35	24	41	100	125	225
Milford Center	41	29	36	28	55	40	28	34	160	131	291
Polaris Healthcare and Rehab	5	1	6	16	12	9	4	24	27	50	77
Seaford Center	17	19	15	25	26	23	12	15	70	82	152
The Moorings at Lewes	2	0	5	8	12	16	18	42	37	66	103
WillowBrooke Court Manor House	0	1	1	1	8	19	16	26	25	47	72
<b>Sussex County (Private) Total</b>	<b>136</b>	<b>117</b>	<b>220</b>	<b>275</b>	<b>345</b>	<b>374</b>	<b>231</b>	<b>389</b>	<b>932</b>	<b>1,155</b>	<b>2,087</b>
<b>Total Private Facilities</b>	<b>341</b>	<b>348</b>	<b>639</b>	<b>760</b>	<b>958</b>	<b>1,231</b>	<b>792</b>	<b>1,492</b>	<b>2,730</b>	<b>3,831</b>	<b>6,561</b>
<b>Public Facilities</b>											
DE Hosp for Chronically Ill	4	1	1	1	0	1	0	1	5	4	9
<b>Total All Facilities</b>	<b>345</b>	<b>349</b>	<b>640</b>	<b>761</b>	<b>958</b>	<b>1,232</b>	<b>792</b>	<b>1,493</b>	<b>2,735</b>	<b>3,835</b>	<b>6,570</b>



**Table 25**  
**Number of Black Discharges by Age, Gender, Facility Type, County and Facility, 2021**

<b>Nursing Home</b>	<b>&lt;65 Male</b>	<b>&lt; 65 Female</b>	<b>65-74 Male</b>	<b>65-74 Female</b>	<b>75-84 Male</b>	<b>75-84 Female</b>	<b>85+ Male</b>	<b>85+ Female</b>	<b>Total Male</b>	<b>Total Female</b>	<b>Total M+F</b>
<b>New Castle County (Private)</b>											
Cadia Rehab Broadmeadow	4	3	1	7	7	12	4	9	16	31	47
Cadia Rehab Pike Creek	9	8	7	13	6	17	14	13	36	51	87
Cadia Rehab Silverside	8	6	12	9	14	20	10	9	44	44	88
Churchman Village	0	12	0	20	0	4	12	0	12	36	48
Complete Care at Brackenville	10	1	2	5	3	5	4	3	19	14	33
Complete Care at Hillside	29	26	24	24	22	12	12	17	87	79	166
Forwood Manor	0	0	0	0	2	3	2	1	4	4	8
Foulk Manor North	0	0	0	0	0	0	0	0	0	0	0
Foulk Manor South	0	0	0	0	0	1	0	0	0	1	1
Gilpin Hall	0	0	0	1	0	0	0	5	0	6	6
Jeanne Jugan Residence	0	0	0	0	0	0	0	0	0	0	0
Kentmere Rehab & Healthcare	0	0	2	7	7	7	1	14	10	28	38
Kutz Rehab & Nursing	0	0	0	1	0	2	0	4	0	7	7
Millcroft Nursing Home	0	0	0	1	0	2	2	3	2	6	8
New Castle Health & Rehab	10	1	6	5	4	6	2	6	22	18	40
Newark Manor	0	0	0	0	0	2	0	0	0	2	2
Parkview Nursing & Rehab	7	9	3	13	2	11	7	7	19	40	59
ProMedica Pike Creek	10	15	7	9	7	5	6	8	30	37	67
ProMedica Wilmington	19	19	22	27	10	13	10	17	61	76	137
Regal Heights Healthcare & Rehab	4	0	13	3	13	8	5	1	35	12	47
Regency Healthcare & Rehab	17	6	8	15	8	8	8	10	41	39	80
Shipley Manor Health Care	0	0	0	0	0	0	0	0	0	0	0
Springs Rehabilitation at Brandywine	0	1	13	5	16	26	9	12	38	44	82
Stonegates	0	0	0	0	0	0	0	0	0	0	0
Weston Senior Living Center	0	0	0	0	3	0	0	0	3	0	3
WillowBrooke Court Cokesbury Village	0	0	0	0	0	0	0	0	0	0	0
WillowBrooke Court Country House	0	0	0	0	0	0	0	0	0	0	0
<b>New Castle County (Private) Total</b>	<b>127</b>	<b>107</b>	<b>120</b>	<b>165</b>	<b>124</b>	<b>164</b>	<b>108</b>	<b>139</b>	<b>479</b>	<b>575</b>	<b>1,054</b>

**Table 25  
(Continued)**

**Number of Black Discharges by Age, Gender, Facility Type, County and Facility, 2021**

<b>Nursing Home</b>	<b>&lt;65 Male</b>	<b>&lt; 65 Female</b>	<b>65-74 Male</b>	<b>65-74 Female</b>	<b>75-84 Male</b>	<b>75-84 Female</b>	<b>85+ Male</b>	<b>85+ Female</b>	<b>Total Male</b>	<b>Total Female</b>	<b>Total M+F</b>
<b>Kent County (Private)</b>											
Cadia Rehab Capitol	9	3	6	5	7	5	8	8	30	21	51
Complete Care at Silver Lake	5	13	10	4	6	7	1	6	22	30	52
Courtland Manor	0	0	2	0	0	0	0	1	2	1	3
Delaware Veterans Home	0	0	0	0	0	0	1	0	1	0	1
Pinnacle Health & Rehab	12	4	14	14	9	8	3	8	38	34	72
The Center at Eden Hill	19	27	26	46	16	25	6	21	67	119	186
Westminster Village Health Center	3	3	3	6	2	9	2	2	10	20	30
<b>Kent County (Private) Total</b>	<b>48</b>	<b>50</b>	<b>61</b>	<b>75</b>	<b>40</b>	<b>54</b>	<b>21</b>	<b>46</b>	<b>170</b>	<b>225</b>	<b>395</b>
<b>Sussex County (Private)</b>											
Atlantic Shores Rehab & Health Center	5	3	9	4	15	3	2	7	31	17	48
Cadia Rehab Renaissance	0	3	0	2	5	6	5	4	10	15	25
Country Rest Home	0	0	0	0	3	0	0	0	3	0	3
Delmar Nursing & Rehab	1	4	0	1	3	1	0	1	4	7	11
Harbor Health Care	2	1	4	0	2	12	0	10	8	23	31
Harrison Senior Living of Georgetown	8	4	7	17	7	5	1	0	23	26	49
Lofland Park Center	5	3	7	5	4	4	1	1	17	13	30
Milford Center	15	26	19	19	16	14	6	9	56	68	124
Polaris Healthcare and Rehab	0	2	0	1	0	1	2	1	2	5	7
Seaford Center	5	6	1	5	8	5	1	3	15	19	34
The Moorings at Lewes	0	0	0	0	0	0	0	0	0	0	0
WillowBrooke Court Manor House	1	1	1	1	0	0	0	0	2	2	4
<b>Sussex County (Private) Total</b>	<b>42</b>	<b>53</b>	<b>48</b>	<b>55</b>	<b>63</b>	<b>51</b>	<b>18</b>	<b>36</b>	<b>171</b>	<b>195</b>	<b>366</b>
<b>Total Private Facilities</b>	<b>217</b>	<b>210</b>	<b>229</b>	<b>295</b>	<b>227</b>	<b>269</b>	<b>147</b>	<b>221</b>	<b>820</b>	<b>995</b>	<b>1,815</b>
<b>Public Facilities</b>											
DE Hosp for Chronically Ill	0	0	1	0	1	1	0	0	2	1	3
<b>Total All Facilities</b>	<b>217</b>	<b>210</b>	<b>230</b>	<b>295</b>	<b>228</b>	<b>270</b>	<b>147</b>	<b>221</b>	<b>822</b>	<b>996</b>	<b>1,818</b>

**Table 26**  
**Number of Discharges by Disposition, Facility Type, County and Facility Name, 2021**

Nursing Home	Own or Relative's Home	Hospital	Assisted Living	Private LTCF	State Owned LTCF	Death	Other	Total
<b>New Castle County (Private)</b>								
Cadia Rehab Broadmeadow	203	89	12	9	0	15	0	328
Cadia Rehab Pike Creek	312	138	15	17	0	10	1	493
Cadia Rehab Silverside	225	101	25	19	0	11	0	381
Churchman Village	188	56	0	4	0	8	0	256
Complete Care at Brackenville	134	35	11	9	0	30	11	230
Complete Care at Hillside	200	80	1	6	0	15	0	302
Forwood Manor	64	15	9	1	0	11	0	100
Foult Manor North	4	0	6	1	0	23	0	34
Foult Manor South	0	5	3	21	0	10	0	39
Gilpin Hall	1	10	0	0	0	13	1	25
Jeanne Jugan Residence	0	4	0	0	0	4	0	8
Kentmere Rehab & Healthcare	99	65	9	3	0	26	5	207
Kutz Rehab & Nursing	16	20	16	0	0	28	2	82
Millcroft Nursing Home	32	23	14	3	0	23	3	98
New Castle Health & Rehab	38	53	0	4	0	2	0	97
Newark Manor	0	1	0	0	0	10	0	11
Parkview Nursing & Rehab	72	53	7	2	1	30	10	175
ProMedica Pike Creek	191	69	3	9	0	13	1	286
ProMedica Wilmington	246	73	25	10	0	50	1	405
Regal Heights Healthcare & Rehab	68	26	1	0	0	15	0	110
Regency Healthcare & Rehab	103	25	0	2	0	11	0	141
Shipley Manor Health Care	47	70	5	0	0	30	0	152
Springs Rehabilitation at Brandywine	75	160	8	23	2	14	0	282
Stonegates	24	5	1	1	0	10	0	41
Weston Senior Living Center	6	12	0	0	0	3	0	21
WillowBrooke Court Cokesbury Village	15	4	9	1	0	18	0	47
WillowBrooke Court Country House	4	12	0	0	0	28	24	68
<b>New Castle County (Private) Total</b>	<b>2,367</b>	<b>1,204</b>	<b>180</b>	<b>145</b>	<b>3</b>	<b>461</b>	<b>59</b>	<b>4,419</b>

**Table 26  
(Continued)**

**Number of Discharges by Disposition, Facility Type, County and Facility Name, 2021**

<b>Nursing Home</b>	<b>Own or Relative's Home</b>	<b>Hospital</b>	<b>Assisted Living</b>	<b>Private LTCF</b>	<b>State Owned LTCF</b>	<b>Death</b>	<b>Other</b>	<b>Total</b>
<b>Kent County (Private)</b>								
Cadia Rehab Capitol	116	61	5	5	0	17	0	204
Complete Care at Silver Lake	106	63	10	12	0	26	0	217
Courtland Manor	4	6	0	0	0	13	0	23
Delaware Veterans Home	1	2	0	0	0	24	1	28
Pinnacle Health & Rehab	140	128	2	8	0	25	15	318
The Center at Eden Hill	477	115	36	40	0	27	0	695
Westminster Village Health Center	79	44	29	4	1	20	9	186
<b>Kent County (Private) Total</b>	<b>923</b>	<b>419</b>	<b>82</b>	<b>69</b>	<b>1</b>	<b>152</b>	<b>25</b>	<b>1,671</b>
<b>Sussex County (Private)</b>								
Atlantic Shores Rehab & Health Center	185	143	14	11	0	55	0	408
Cadia Rehab Renaissance	217	93	11	2	0	36	1	360
Country Rest Home	12	6	3	0	1	42	0	64
Delmar Nursing & Rehab	51	7	5	1	0	11	2	77
Harbor Health Care	162	38	3	10	0	38	0	251
Harrison Senior Living of Georgetown	140	14	15	0	0	21	0	190
Lofland Park Center	166	38	9	11	1	32	2	259
Milford Center	246	71	19	29	3	47	8	423
Polaris Healthcare and Rehab	56	21	2	2	0	2	1	84
Seaford Center	108	43	4	14	0	17	0	186
The Moorings at Lewes	65	7	15	0	0	15	1	103
WillowBrooke Court Manor House	26	13	19	2	0	15	1	76
<b>Sussex County (Private) Total</b>	<b>1,434</b>	<b>494</b>	<b>119</b>	<b>82</b>	<b>5</b>	<b>331</b>	<b>16</b>	<b>2,481</b>
<b>Total Private Facilities</b>	<b>4,724</b>	<b>2,117</b>	<b>381</b>	<b>296</b>	<b>9</b>	<b>944</b>	<b>100</b>	<b>8,571</b>
<b>Public Facilities</b>								
DE Hosp for Chronically Ill	0	0	2	0	0	10	0	12
<b>Total All Facilities</b>	<b>4,724</b>	<b>2,117</b>	<b>383</b>	<b>296</b>	<b>9</b>	<b>954</b>	<b>100</b>	<b>8,583</b>

**Table 27**  
**Percentage of Discharges by Disposition, Facility Type, County and Facility Name, 2021**

Nursing Home	Own or Relative's Home	Hospital	Assisted Living	Private LTCF	State Owned LTCF	Death	Other	Total
<b>New Castle County (Private)</b>								
Cadia Rehab Broadmeadow	61.9%	27.1%	3.7%	2.7%	0.0%	4.6%	0.0%	100.0%
Cadia Rehab Pike Creek	63.3%	28.0%	3.0%	3.4%	0.0%	2.0%	0.2%	100.0%
Cadia Rehab Silverside	59.1%	26.5%	6.6%	5.0%	0.0%	2.9%	0.0%	100.0%
Churchman Village	73.4%	21.9%	0.0%	1.6%	0.0%	3.1%	0.0%	100.0%
Complete Care at Brackenville	58.3%	15.2%	4.8%	3.9%	0.0%	13.0%	4.8%	100.0%
Complete Care at Hillside	66.2%	26.5%	0.3%	2.0%	0.0%	5.0%	0.0%	100.0%
Forwood Manor	64.0%	15.0%	9.0%	1.0%	0.0%	11.0%	0.0%	100.0%
Foulk Manor North	11.8%	0.0%	17.6%	2.9%	0.0%	67.6%	0.0%	100.0%
Foulk Manor South	0.0%	12.8%	7.7%	53.8%	0.0%	25.6%	0.0%	100.0%
Gilpin Hall	4.0%	40.0%	0.0%	0.0%	0.0%	52.0%	4.0%	100.0%
Jeanne Jugan Residence	0.0%	50.0%	0.0%	0.0%	0.0%	50.0%	0.0%	100.0%
Kentmere Rehab & Healthcare	47.8%	31.4%	4.3%	1.4%	0.0%	12.6%	2.4%	100.0%
Kutz Rehab & Nursing	19.5%	24.4%	19.5%	0.0%	0.0%	34.1%	2.4%	100.0%
Millcroft Nursing Home	32.7%	23.5%	14.3%	3.1%	0.0%	23.5%	3.1%	100.0%
New Castle Health & Rehab	39.2%	54.6%	0.0%	4.1%	0.0%	2.1%	0.0%	100.0%
Newark Manor	0.0%	9.1%	0.0%	0.0%	0.0%	90.9%	0.0%	100.0%
Parkview Nursing & Rehab	41.1%	30.3%	4.0%	1.1%	0.6%	17.1%	5.7%	100.0%
ProMedica Pike Creek	66.8%	24.1%	1.0%	3.1%	0.0%	4.5%	0.3%	100.0%
ProMedica Wilmington	60.7%	18.0%	6.2%	2.5%	0.0%	12.3%	0.2%	100.0%
Regal Heights Healthcare & Rehab	61.8%	23.6%	0.9%	0.0%	0.0%	13.6%	0.0%	100.0%
Regency Healthcare & Rehab	73.0%	17.7%	0.0%	1.4%	0.0%	7.8%	0.0%	100.0%
Shipley Manor Health Care	30.9%	46.1%	3.3%	0.0%	0.0%	19.7%	0.0%	100.0%
Springs Rehabilitation at Brandywine	26.6%	56.7%	2.8%	8.2%	0.7%	5.0%	0.0%	100.0%
Stonegates	58.5%	12.2%	2.4%	2.4%	0.0%	24.4%	0.0%	100.0%
Weston Senior Living Center	28.6%	57.1%	0.0%	0.0%	0.0%	14.3%	0.0%	100.0%
WillowBrooke Court Cokesbury Village	31.9%	8.5%	19.1%	2.1%	0.0%	38.3%	0.0%	100.0%
WillowBrooke Court Country House	5.9%	17.6%	0.0%	0.0%	0.0%	41.2%	35.3%	100.0%
<b>New Castle County (Private) Total</b>	<b>53.6%</b>	<b>27.2%</b>	<b>4.1%</b>	<b>3.3%</b>	<b>0.1%</b>	<b>10.4%</b>	<b>1.3%</b>	<b>100.0%</b>

**Table 27  
(Continued)**

**Percentage of Discharges by Disposition, Facility Type, County and Facility Name, 2021**

<b>Nursing Home</b>	<b>Own or Relative's Home</b>	<b>Hospital</b>	<b>Assisted Living</b>	<b>Private LTCF</b>	<b>State Owned LTCF</b>	<b>Death</b>	<b>Other</b>	<b>Total</b>
<b>Kent County (Private)</b>								
Cadia Rehab Capitol	56.9%	29.9%	2.5%	2.5%	0.0%	8.3%	0.0%	100.0%
Complete Care at Silver Lake	48.8%	29.0%	4.6%	5.5%	0.0%	12.0%	0.0%	100.0%
Courtland Manor	17.4%	26.1%	0.0%	0.0%	0.0%	56.5%	0.0%	100.0%
Delaware Veterans Home	3.6%	7.1%	0.0%	0.0%	0.0%	85.7%	3.6%	100.0%
Pinnacle Health & Rehab	44.0%	40.3%	0.6%	2.5%	0.0%	7.9%	4.7%	100.0%
The Center at Eden Hill	68.6%	16.5%	5.2%	5.8%	0.0%	3.9%	0.0%	100.0%
Westminster Village Health Center	42.5%	23.7%	15.6%	2.2%	0.5%	10.8%	4.8%	100.0%
<b>Kent County (Private) Total</b>	<b>55.2%</b>	<b>25.1%</b>	<b>4.9%</b>	<b>4.1%</b>	<b>0.1%</b>	<b>9.1%</b>	<b>1.5%</b>	<b>100.0%</b>
<b>Sussex County (Private)</b>								
Atlantic Shores Rehab & Health Center	45.3%	35.0%	3.4%	2.7%	0.0%	13.5%	0.0%	100.0%
Cadia Rehab Renaissance	60.3%	25.8%	3.1%	0.6%	0.0%	10.0%	0.3%	100.0%
Country Rest Home	18.8%	9.4%	4.7%	0.0%	1.6%	65.6%	0.0%	100.0%
Delmar Nursing & Rehab	66.2%	9.1%	6.5%	1.3%	0.0%	14.3%	2.6%	100.0%
Harbor Health Care	64.5%	15.1%	1.2%	4.0%	0.0%	15.1%	0.0%	100.0%
Harrison Senior Living of Georgetown	73.7%	7.4%	7.9%	0.0%	0.0%	11.1%	0.0%	100.0%
Lofland Park Center	64.1%	14.7%	3.5%	4.2%	0.4%	12.4%	0.8%	100.0%
Milford Center	58.2%	16.8%	4.5%	6.9%	0.7%	11.1%	1.9%	100.0%
Polaris Healthcare and Rehab	66.7%	25.0%	2.4%	2.4%	0.0%	2.4%	1.2%	100.0%
Seaford Center	58.1%	23.1%	2.2%	7.5%	0.0%	9.1%	0.0%	100.0%
The Moorings at Lewes	63.1%	6.8%	14.6%	0.0%	0.0%	14.6%	1.0%	100.0%
WillowBrooke Court Manor House	34.2%	17.1%	25.0%	2.6%	0.0%	19.7%	1.3%	100.0%
<b>Sussex County (Private) Total</b>	<b>57.8%</b>	<b>19.9%</b>	<b>4.8%</b>	<b>3.3%</b>	<b>0.2%</b>	<b>13.3%</b>	<b>0.6%</b>	<b>100.0%</b>
<b>Total Private Facilities</b>	<b>55.1%</b>	<b>24.7%</b>	<b>4.4%</b>	<b>3.5%</b>	<b>0.1%</b>	<b>11.0%</b>	<b>1.2%</b>	<b>100.0%</b>
<b>Public Facilities</b>								
DE Hosp for Chronically Ill	0.0%	0.0%	16.7%	0.0%	0.0%	83.3%	0.0%	100.0%
<b>Total All Facilities</b>	<b>55.0%</b>	<b>24.7%</b>	<b>4.5%</b>	<b>3.4%</b>	<b>0.1%</b>	<b>11.1%</b>	<b>1.2%</b>	<b>100.0%</b>

## **APPENDIX A: 2021 NURSING HOME TRENDS AMONG THE UNDER 65 POPULATION**

Beginning with the 2019 DNHUSR, the DHCC began collecting cohort-specific admissions, discharge, and billable patient days data on the Under 65 nursing home patient population. Prior to the 2019 annual report, data pertaining to this cohort were consolidated in an Under 65 category. Currently, Delaware nursing homes report monthly utilization data for populations age 18-34, 35-44, 45-54, and 55-64, and the DHCC uses these data to track nursing home utilization metrics among younger populations.

In 2021, patients under the age of 65 accounted for 1,251 of 9,260 (13.5%) nursing home admissions and 1,162 of 8,583 (13.5%) nursing home discharges (Tables A1 and A2). Males accounted for 661 of 1,251 (52.8%) of admissions and 590 of 1,162 (50.8%) of discharges among the Under 65 population in 2021. In the same year, White patients accounted for 786 (62.8%) admissions and 694 (59.7%) discharges among the Under 65 population. The number of admissions and discharges among the Under 65 population increased with age across the 18-34, 35-44, 45-54, and 55-64 age groups. The majority (40 of 47; 85.1%) of Delaware nursing homes admitted at least one patient under the age of 65 in 2021. Seven Delaware nursing homes (14.9%) admitted at least one patient ages 18-34 in 2021.

**Table A1: Delaware Nursing Home Admissions among the Under 65 Patient Population, by Sex, Race, and Facility Type, and County, 2021**

	Under 65: Age Cohort				
	18-34 yrs.	35-44 yrs.	45-54 yrs.	55-64 yrs.	Total
Sex					
Male	19 (2.9%)	45 (6.8%)	89 (13.5%)	508 (76.9%)	661 (100.0%)
Female	4 (0.7%)	18 (3.1%)	97 (16.4%)	471 (79.8%)	590 (100.0%)
Race					
White	4 (0.5%)	46 (5.9%)	110 (14.0%)	626 (79.6%)	786 (100.0%)
Black	17 (4.1%)	12 (2.9%)	70 (16.7%)	319 (76.3%)	418 (100.0%)
Other	2 (4.3%)	5 (10.6%)	6 (12.8%)	34 (72.3%)	47 (100.0%)
Facility Type and County					
Private Facilities	23 (1.8%)	62 (5.0%)	186 (14.9%)	977 (78.3%)	1,248 (100.0%)
New Castle	14 (2.2%)	28 (4.5%)	87 (13.9%)	495 (79.3%)	624 (100.0%)
Kent	2 (0.8%)	5 (2.0%)	18 (7.4%)	219 (89.8%)	244 (100.0%)
Sussex	7 (1.8%)	29 (7.6%)	81 (21.3%)	263 (69.2%)	380 (100.0%)
Public Facilities	0 (0.0%)	1 (33.3%)	0 (0.0%)	2 (66.7%)	3 (100.0%)
<b>Total Admissions Under 65</b>	<b>23 (1.8%)</b>	<b>63 (5.0%)</b>	<b>186 (14.9%)</b>	<b>979 (78.3%)</b>	<b>1,251 (100.0%)</b>



**Table A2: Delaware Nursing Home Discharges among the Under 65 Patient Population, by Sex, Race, and Facility Type, and County, 2021**

	Under 65: Age Cohort				
	18-34 yrs.	35-44 yrs.	45-54 yrs.	55-64 yrs.	Total
<b>Sex</b>					
Male	7 (1.2%)	30 (5.1%)	92 (15.6%)	461 (78.1%)	590 (100.0%)
Female	5 (0.9%)	27 (4.7%)	84 (14.7%)	456 (79.7%)	572 (100.0%)
<b>Race</b>					
White	4 (0.6%)	42 (6.1%)	90 (13.0%)	558 (80.4%)	694 (100.0%)
Black	7 (1.6%)	14 (3.3%)	76 (17.8%)	330 (77.3%)	427 (100.0%)
Other	1 (2.4%)	1 (2.4%)	10 (24.4%)	29 (70.7%)	41 (100.0%)
<b>Facility Type and County</b>					
Private Facilities	11 (1.0%)	56 (4.8%)	175 (15.1%)	915 (79.1%)	1,157 (100.0%)
New Castle	5 (0.9%)	15 (2.8%)	78 (14.5%)	439 (81.8%)	537 (100.0%)
Kent	1 (0.4%)	11 (4.1%)	30 (11.2%)	226 (84.3%)	268 (100.0%)
Sussex	5 (1.4%)	30 (8.5%)	67 (19.0%)	250 (71.0%)	352 (100.0%)
Public Facilities	1 (20.0%)	1 (20.0%)	1 (20.0%)	2 (40.0%)	5 (100.0%)
<b>Total Discharges Under 65</b>	<b>12 (1.0%)</b>	<b>57 (4.9%)</b>	<b>176 (15.1%)</b>	<b>917 (78.9%)</b>	<b>1,162 (100.0%)</b>