

# **2020 DELAWARE NURSING HOME UTILIZATION STATISTICAL REPORT**

**June 2021**

**Delaware Health and Social Services  
Delaware Health Care Commission  
Herman M. Holloway Sr. Health and Social Services Campus  
1901 N. Dupont Highway  
New Castle, DE 19720**



*DELAWARE HEALTH AND SOCIAL SERVICES*

## EXECUTIVE SUMMARY

In 2020, 48 Delaware nursing homes operated 4,953 licensed beds. Most Delaware nursing homes (46 of 48; 96%) were privately owned and operated in 2020. Private facilities operated 94% of all nursing home beds in Delaware. Delaware's two publicly-operated nursing home facilities (Governor Bacon Health Center (GBHC) and the Delaware Hospital for the Chronically Ill) operated the remaining 6% of nursing home beds in 2020.

In 2020, 8,238 patients were admitted to Delaware nursing homes. In the same year, nursing homes discharged 8,758 patients. Fifty-one percent of patients discharged from Delaware nursing homes in 2020 were discharged home. Admissions and discharges to Delaware nursing homes follow racial demographic trends across Delaware. In 2020, White patients accounted for 76% of nursing home admissions and discharges. Patients of color accounted for 24% of nursing home admissions and discharges in 2020, with Black patients representing 22% of all admissions and discharges. Patients 75-84 years and 85 years or older accounted for 31% and 30%, respectively, of 2020 Delaware nursing home admissions. Twenty-four percent of 2020 nursing home admissions were individuals ages 65-74. Individuals under the age of 65 accounted for 16% of 2020 admissions. Similar age-related trends were observed for 2020 discharges.

The 2020 Delaware Nursing Home Utilization Statistical Report (DNHUSR) highlights many of the effects of the COVID-19 pandemic on Delaware nursing home utilization trends. Nationwide, the COVID-19 pandemic profoundly impacted nursing homes and other long-term care facilities that cared for individuals most vulnerable to the effects of the coronavirus. By June 2021, residents of long-term care facilities accounted for 758 of Delaware's 1,677 COVID-19 deaths (45%); individuals ages 65+ accounted for 83% of COVID-19 deaths in Delaware. In 2020, Delaware nursing homes admitted 30% fewer patients compared to 2019. From 2019 to 2020, the aggregate occupancy rate for private Delaware nursing homes fell from 86% to 77%. Future versions of the DNHUSR will monitor the long-term impacts of the COVID-19 pandemic on nursing home utilization trends.

The Delaware Health Care Commission (DHCC) continues to monitor annual nursing home admissions data to identify newly-emerging trends pertaining to long-term care and rehabilitations services within Delaware. Long-term care utilization surveillance includes monitoring projected changes in population size at the county and state levels. The growing size and the changing demographics of Delaware's population are central to the understanding of the distribution of nursing homes, the number of licensed nursing home beds, and their utilization.

## TABLE OF CONTENTS

INTRODUCTION .....	1
STATEWIDE POPULATION PROJECTIONS .....	1
PART 1: 2020 DELAWARE NURSING HOME UTILIZATION STATISTICS .....	4
NUMBER OF FACILITIES AND LICENSED BEDS .....	4
BILLABLE PATIENT DAYS .....	4
OCCUPANCY RATES .....	7
ADMISSIONS .....	9
DISCHARGES .....	12
SOURCE OF PAYMENT .....	16
PART 2: 2020 FACILITY-LEVEL NURSING HOME UTILIZATION STATISTICS .....	17
APPENDIX A: 2020 NURSING HOME TRENDS AMONG THE UNDER 65 POPULATION .....	52

## **ACKNOWLEDGEMENTS**

This report was funded by the Delaware Health and Social Services, Health Care Commission; it is the product of collaborative support from the Delaware Health Care Facilities Association, the Division of Services for Aging and Adults with Physical Disabilities, and all Delaware nursing homes. The Health Care Commission thanks these stakeholders and other subject matter experts who provided background information, analysis, and feedback to inform the development of this report.

## INTRODUCTION

This, the 34<sup>th</sup> edition of the Delaware Nursing Home Utilization Statistical Report (DNHUSR), summarizes Delaware nursing home trend data for January 2020 – December 2020. Data summarized in the DNHUSR are submitted on a monthly basis by Delaware nursing homes<sup>1</sup>, and aggregated at the end of the reporting year to yield annual trend data by nursing home facility and county. The DNHUSR presents 2020 Delaware nursing home data in two main sections. Part 1, Delaware Nursing Home Utilization Statistics, highlights historical facility utilization trend data from 2010 through 2020. Data presented in this section are aggregated to the state- and county-levels. Part 2, Facility-Level Nursing Home Utilization Statistics, presents facility data, including total patient days, occupancy rates, percentage of patients by source of payment, and annual admissions and discharges.

The 2020 DNHUSR highlights many of the effects of the COVID-19 pandemic on Delaware nursing home utilization trends. Nationwide, the COVID-19 pandemic profoundly impacted nursing homes and other long-term care facilities that cared for individuals most vulnerable to the effects of the coronavirus. By June 2021, residents of long-term care facilities accounted for 758 of Delaware's 1,677 COVID-19 deaths (45%); individuals ages 65+ accounted for 83% of COVID-19 deaths in Delaware.<sup>2</sup> In 2020, Delaware nursing homes admitted 30.3% fewer patients compared to 2019. From 2019 to 2020, the aggregate occupancy rate for private Delaware nursing homes fell from 86.2% to 77.1%. Future iterations of the DNHUSR will monitor the long-term impacts of the COVID-19 pandemic on nursing home utilization trends.

## STATEWIDE POPULATION PROJECTIONS

The growing size and the changing demographics of Delaware's population are central to the understanding of the distribution of nursing homes, the number of licensed nursing home beds, and their utilization. DHCC analyzed 2020 Delaware Population Consortium data to provide the context within which to evaluate Delaware's ability to meet nursing home bed demand. Figure 1 shows the projected increase of Delaware's total population from 2020 to 2050. Figure 2 shows the projected population increase over the same time period among Delawareans ages 65 and older.

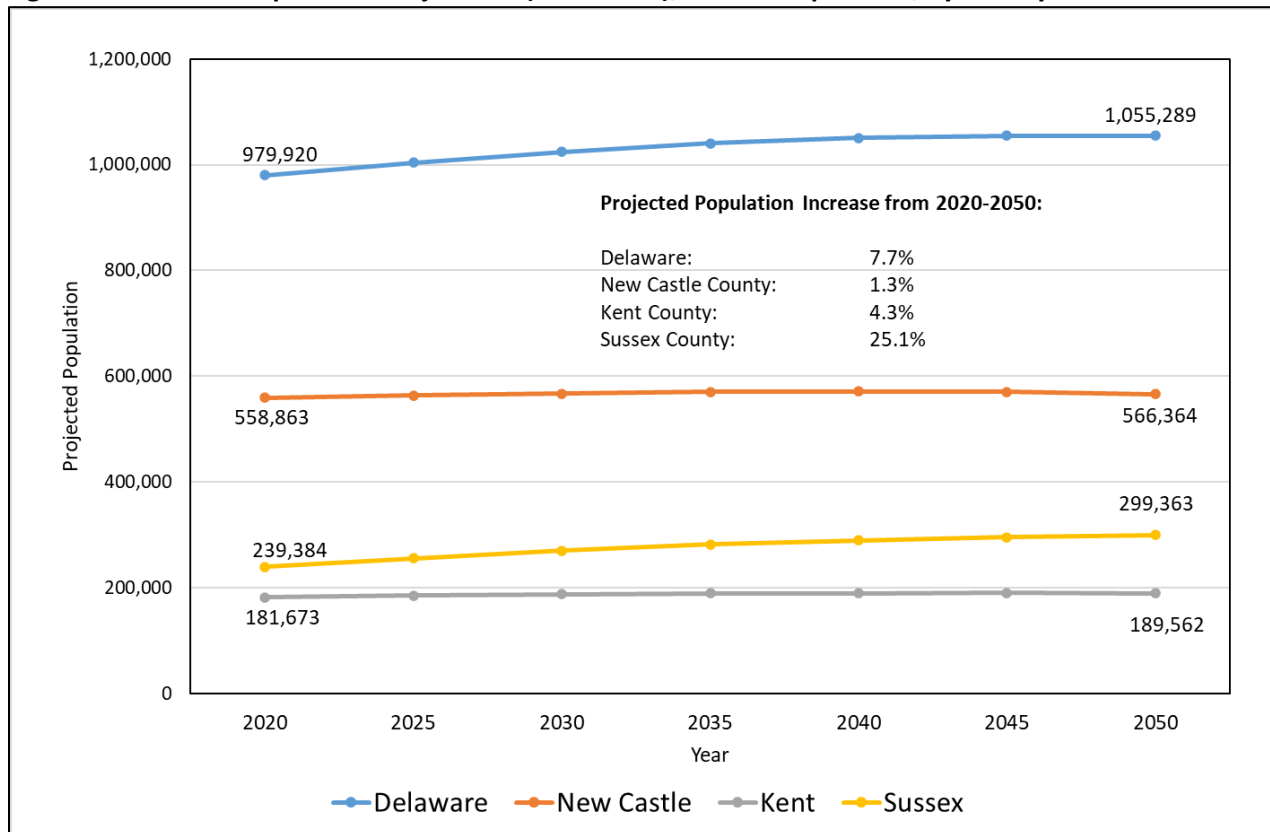
---

<sup>1</sup> Excluded from this report are facilities that serve individuals under the age of 18, as well as Intermediate Care Facilities for Individuals with Intellectual Developmental Disabilities (ICF/IID). ICF/IID facilities provide active and comprehensive and individualized treatment and rehabilitation services to promote functional status and independence.

<sup>2</sup> <https://myhealthycommunity.dhss.delaware.gov/locations/state/deaths>

Between 2020 and 2050, Delaware's total population is expected to increase 7.7% (from 979,920 in 2020 to 1,055,289 in 2050). Overall population growth is distributed unevenly across Delaware's counties. From 2020-2050, New Castle and Kent Counties are expected to experience a 1.3% and 4.3% increase in total population, respectively; total population growth for Sussex County is estimated at 25.1% for the same time period.

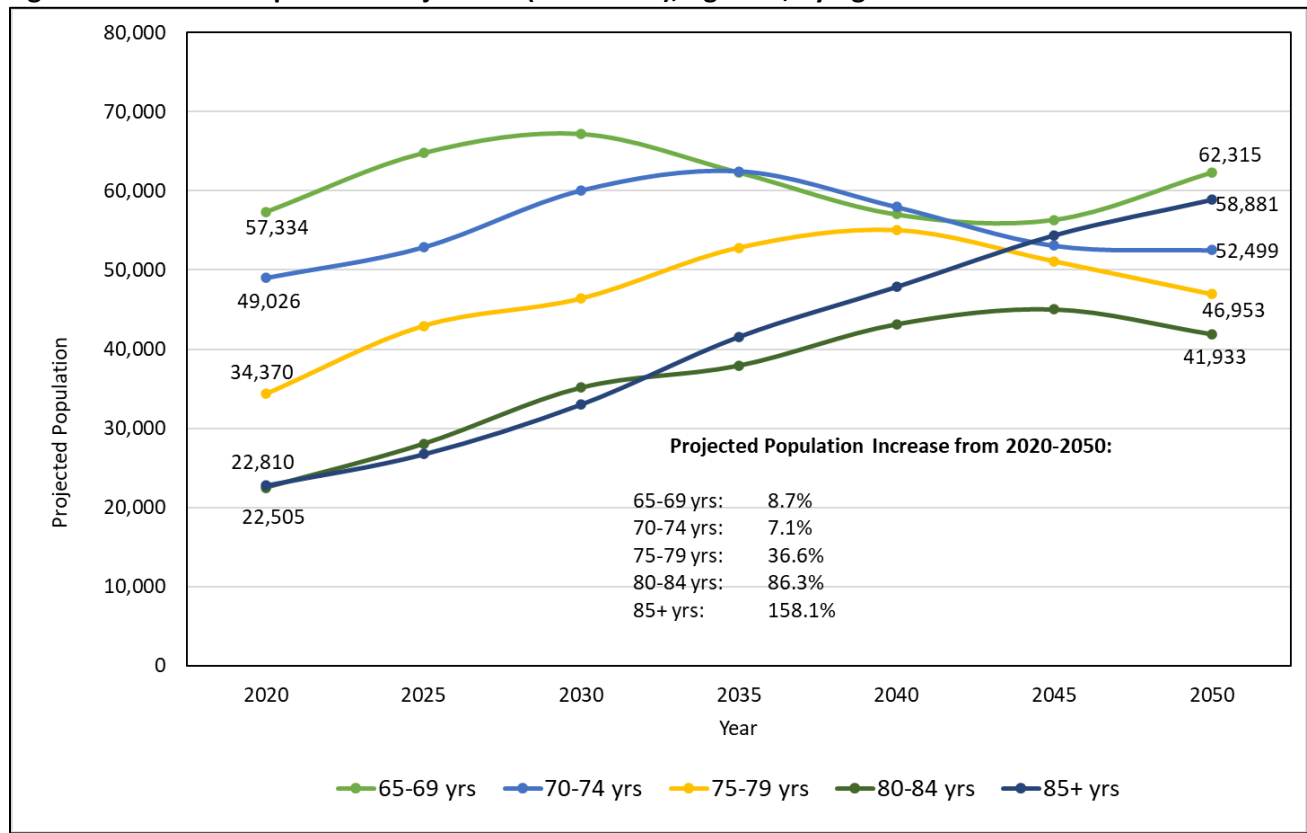
**Figure 1: Delaware Population Projections (2020-2050), Overall Population, by County**



Source: Annual Population Projections, Delaware Population Consortium, Version 2020.0, October 2020.

Projected population growth is more dramatic among older Delawareans. From 2020 to 2050, the statewide population of Delawareans ages 65 and older is expected to increase 41.1% (from 186,045 to 262,581). The most dramatic increases in cohort size are projected among the oldest subpopulations. From 2020 to 2050, the number of Delawareans ages 65-69, 75-79, 80-84, and 85+ are projected to increase 8.7%, 7.1%, 36.6%, 86.3%, and 158.1%, respectively (Figure 2).

**Figure 2: Delaware Population Projections (2020-2050), Age 65+, by Age Cohort**



Source: Annual Population Projections, Delaware Population Consortium, Version 2020.0, October 2020.

## PART 1: 2020 DELAWARE NURSING HOME UTILIZATION STATISTICS

### NUMBER OF FACILITIES AND LICENSED BEDS

In 2020, 48 Delaware nursing homes operated 4,953 licensed beds. Most Delaware nursing homes – 46 out of 48 (96%) – were privately owned and operated in 2020. Private facilities operated 94% of all nursing home beds in Delaware. Delaware’s two publicly-operated nursing home facilities (Governor Bacon Health Center (GBHC) and the Delaware Hospital for the Chronically Ill) operated the remaining 6% of nursing home beds in 2020. In March 2020, Polaris Healthcare & Rehabilitation Center, a 26-bed private nursing home facility in Sussex County, opened to patients. In June 2020, GBHC, a 78-bed public nursing home in New Castle County, closed permanently. Partial-year data for GBHC is included in the 2020 DNHUSR.

**Table 1: Delaware Nursing Home Beds, by County and Facility Type, 2010-2020**

Year	Private Facilities								Public Facilities		All Facilities	
	New Castle County		Kent County		Sussex County		Total Private		Homes	Beds	Homes	Beds
2010	26	2,519	6	642	11	1,234	43	4,395	3	591	46	4,986
2011	26	2,519	6	642	11	1,234	43	4,395	3	591	46	4,986
2012	27	2,569	6	672	11	1,264	44	4,505	3	576	47	5,081
2013	27	2,649	6	672	11	1,264	44	4,585	3	522	47	5,107
2014	27	2,649	6	672	11	1,264	44	4,585	3	375	47	4,960
2015	27	2,646	6	672	11	1,264	44	4,582	3	312	47	4,894
2016	27	2,647	6	678	11	1,264	44	4,589	2	287	46	4,876
2017	27	2,641	6	678	11	1,264	44	4,583	2	283	46	4,866
2018	27	2,629	7	764	11	1,264	45	4,657	2	283	47	4,940
2019	27	2,617	7	764	11	1,264	45	4,645	2	283	47	4,928
2020	27	2,618	7	762	12	1,290	46	4,670	2	283	48	4,953
2010-2020 % Change		3.9%		18.7%		4.5%		6.3%		-54.8%		-0.7%
2019-2020 % Change		0.0%		-0.3%		2.1%		0.5%		0.0%		0.5%

### BILLABLE PATIENT DAYS

A commonly-used measure of nursing home utilization is the number of billable patient days generated by a facility over a given time period. A billable patient day represents a unit of time (i.e., one day) during which the facility’s services are used by one patient. For example, if a nursing home has 100 patients



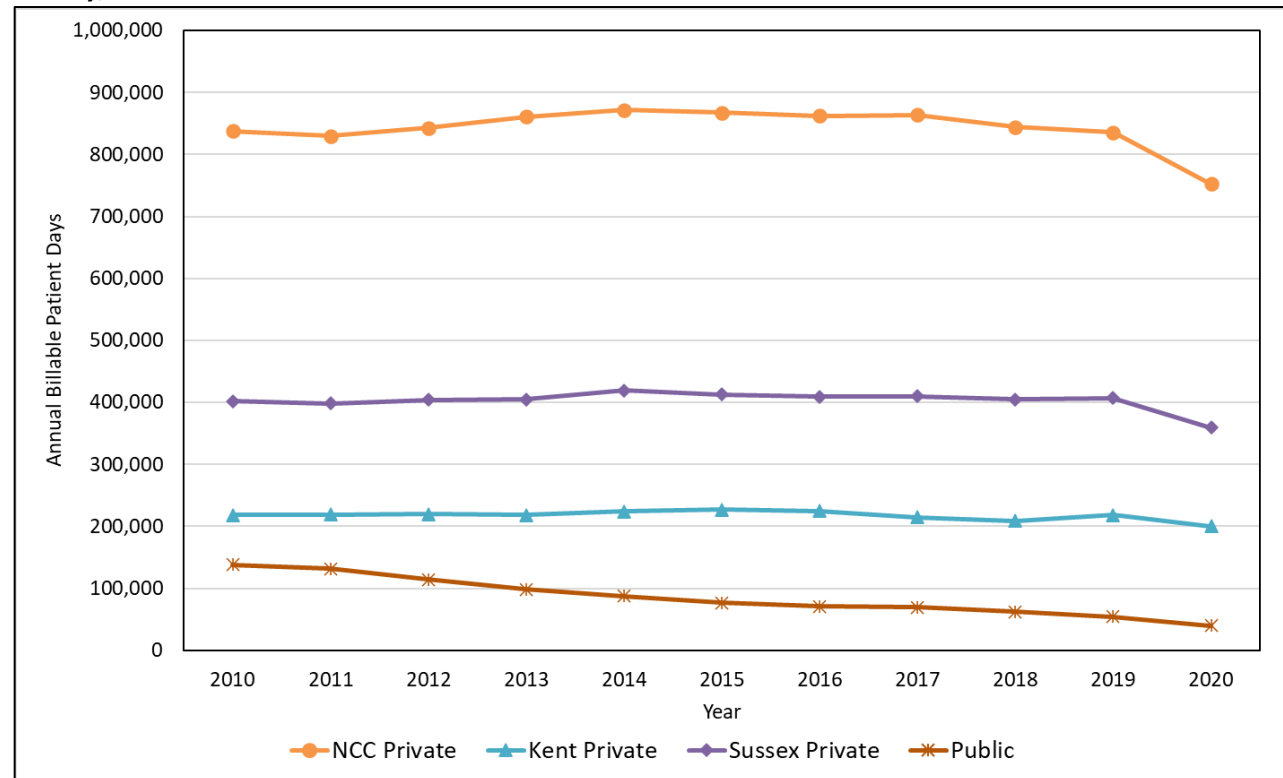
on a day, the facility has generated 100 billable patient days for that 24-hour period. If a facility's number of billable patient days increases from one time period to the next, it is an indication that the facility is caring for more patients, caring for patients for longer periods of time, or a combination of these two factors. Mathematically, billable patient days per facility per year are calculated by summing each facility's monthly billable patient days over a 12-month period.

From 2010-2019, annual billable patient days for private facilities in Kent, and Sussex remained stable (Table 2; Figure 3). Private facilities in New Castle County experienced an increase in annual billable patient days from 2010-2014 before stabilizing from 2015-2019. Consistent trends in annual billable patient days are observed even within the context of ongoing national expansion of home and community-based services and supports that shift the locus of long-term care away from nursing homes. In 2020, the COVID-19 pandemic reduced the number of billable patient days private facilities in all three counties. From 2019-2020, annual billable patient days declined 10.0%, 8.2%, and 11.6% in privately-owned New Castle, Kent, and Sussex nursing home facilities. Billable patient days in public facilities have steadily declined from 2010-2020.

**Table 2: Delaware Nursing Homes, Number of Billable Patient Days Utilized by Year, Facility Type, and County, 2010-2020**

Year	Private Facilities				Public Facilities	All Facilities
	New Castle County	Kent County	Sussex County	Total Private		
2010	838,037	218,593	402,188	1,458,818	137,824	1,596,642
2011	829,974	219,302	398,550	1,447,826	131,675	1,579,501
2012	843,039	219,558	403,842	1,466,439	114,177	1,580,616
2013	860,924	218,651	404,942	1,484,517	98,108	1,582,625
2014	871,456	224,370	419,167	1,514,993	87,792	1,602,785
2015	867,015	226,841	412,646	1,506,502	76,993	1,583,495
2016	862,050	224,549	409,052	1,495,651	71,111	1,566,762
2017	864,047	214,618	409,816	1,488,481	69,703	1,551,184
2018	843,990	209,311	404,814	1,458,115	61,903	1,520,018
2019	835,845	218,157	406,828	1,460,830	54,139	1,514,969
2020	752,439	200,162	359,640	1,312,241	40,064	1,352,305
2010-2020 % Change	-10.2%	-8.4%	-10.6%	-10.0%	-70.9%	-15.3%
2019-2020 % Change	-10.0%	-8.2%	-11.6%	-10.2%	-26.0%	-10.7%

**Figure 3: Delaware Nursing Homes, Number of Billable Patient Days Utilized by Year, Facility Type, and County, 2010-2020**



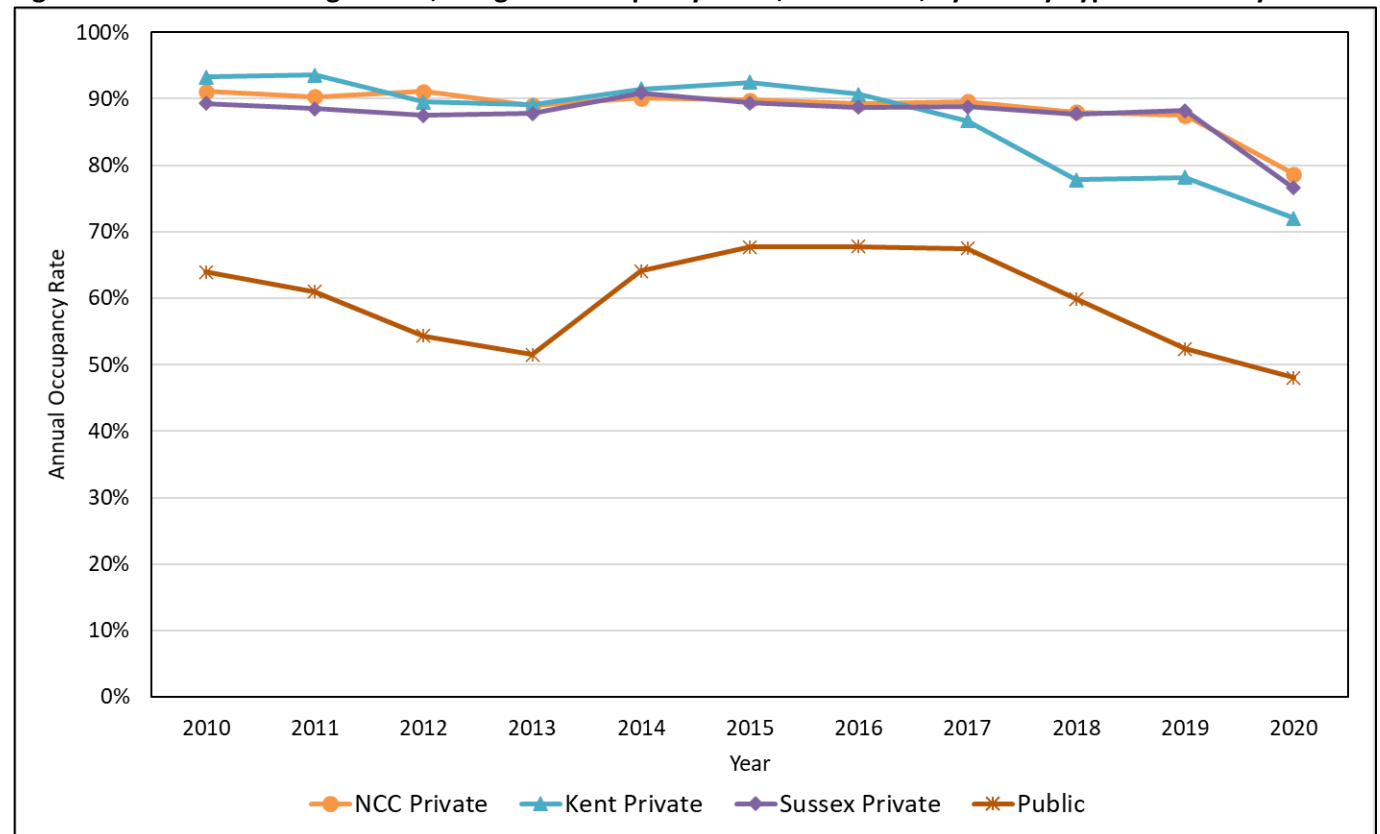
## OCCUPANCY RATES

Occupancy rates are helpful for putting facilities' utilization data within the context of available resources. A facility's occupancy rate reflects the percentage of available beds occupied by patients throughout the reporting year. Occupancy rates were weighted based on the number of days a facility was open during the reporting year. Mathematically, for facilities that were open 365 days of the reporting year,  $\text{Weighted Occupancy Rate} = [(\text{Number of Billable Patient Days}) / (\text{Number of Licensed Bed Days})] * 100\%$  where (Number of Licensed Bed Days) equaled the number of licensed beds in a facility (calculated as the average number of beds over the entire 12-month period) multiplied by 365. If a facility was open fewer than 365 days of the reporting year, the same weighted occupancy formula was used with the exception that (Number of Licensed Bed Days) equaled the number of licensed beds multiplied by the actual number of days the facility was open.

In 2020, private nursing homes in New Castle, Kent, and Sussex Counties operated at 78.7%, 72.0%, and 76.6% occupancy, respectively (Table 3; Figure 4). In 2020, Delaware's two public nursing homes collectively operated at 48.0% occupancy. Prior to the pandemic (i.e., from 2010-2019) occupancy rates for private nursing homes consistently approached or exceeded 90%. The comparatively lower occupancy rate for Kent County private nursing homes relative to New Castle County and Sussex County private facilities, reflects a facility-related nuance: the Delaware Veterans Home (a larger, 150-bed facility) operates at a comparatively lower-occupancy (46.0% in 2020) due to admissions-based patient criteria.

**Table 3: Delaware Nursing Homes, Weighted Occupancy Rates, 2010-2020, by Facility Type and County**

Year	Private Facilities				Public Facilities	All Facilities
	New Castle County	Kent County	Sussex County	Total Private		
2010	91.1%	93.3%	89.3%	90.9%	63.9%	87.7%
2011	90.3%	93.6%	88.5%	90.3%	61.0%	86.8%
2012	91.1%	89.5%	87.5%	89.8%	54.3%	85.8%
2013	89.0%	89.1%	87.8%	88.7%	51.5%	84.9%
2014	90.1%	91.5%	90.9%	90.5%	64.1%	88.5%
2015	89.8%	92.5%	89.4%	90.1%	67.7%	88.7%
2016	89.2%	90.7%	88.7%	89.3%	67.8%	88.0%
2017	89.6%	86.7%	88.8%	89.0%	67.5%	87.7%
2018	88.0%	77.8%	87.7%	86.3%	59.9%	84.8%
2019	87.5%	78.2%	88.2%	86.2%	52.4%	84.2%
2020	78.7%	72.0%	76.6%	77.1%	48.0%	75.7%
2010-2020 % Change	-13.6%	-22.8%	-14.2%	-15.2%	-24.9%	-13.7%
2019-2020 % Change	-10.1%	-7.9%	-13.2%	-10.6%	-8.4%	-10.1%

**Figure 4: Delaware Nursing Homes, Weighted Occupancy Rates, 2010-2020, by Facility Type and County**

## **ADMISSIONS**

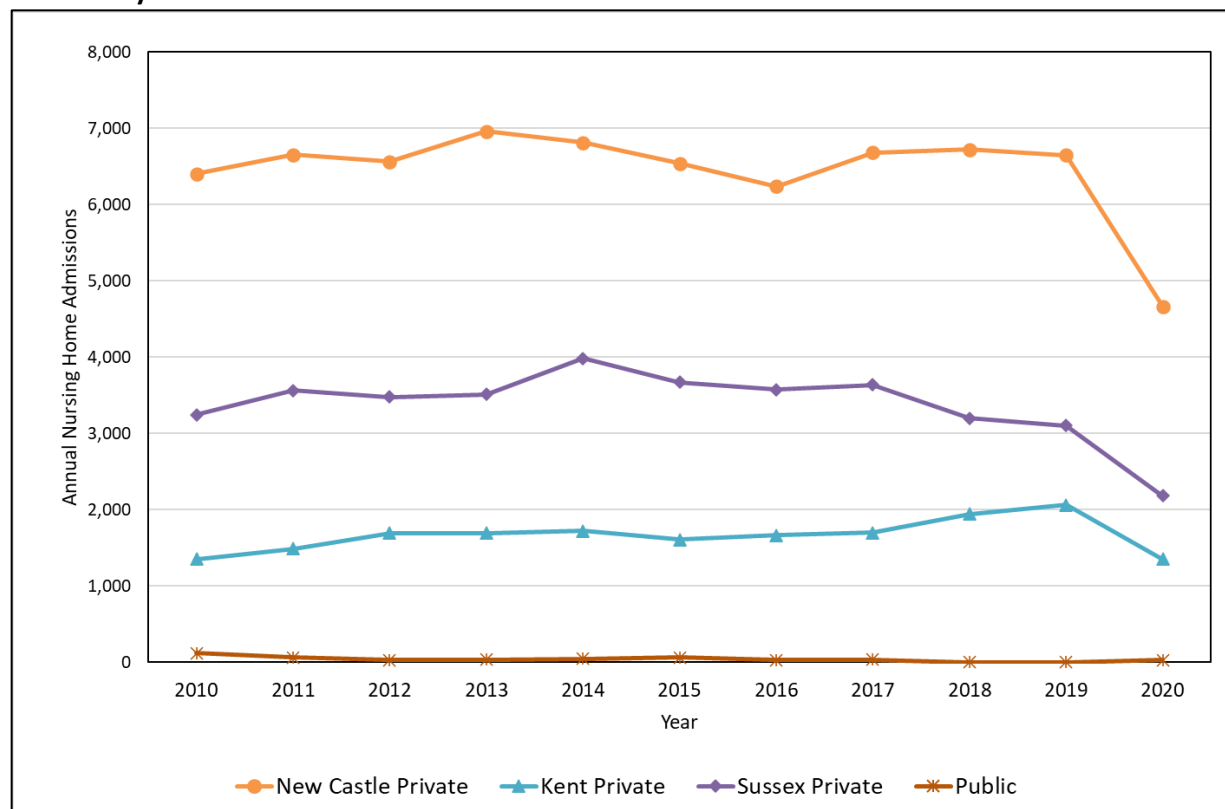
In 2020, Delaware nursing homes admitted 8,238 patients. As shown in Table 4 and Figure 5, annual admissions to private facilities sharply declined in 2020 amid the COVID-19 pandemic. From 2019-2020, private nursing home admissions fell 29.9%, 34.2%, and 29.6% in New Castle, Kent, and Sussex Counties, respectively. Prior to the pandemic (i.e., from 2010-2019), private nursing home admissions in all three counties fluctuated within a fairly narrow range: approximately 6,000-7,000 admissions per year in New Castle County, approximately 3,000-4,000 admissions per year in Kent County, and approximately 1,300-2,000 admissions per year in Sussex County.

Conversely, annual admissions to public nursing homes have fluctuated erratically. Over the past decade, public nursing home admissions peaked in 2010 (119 admissions) before declining through 2019. The falling number of public facility admissions reflect facility closures and/or reduction in the number of available licensed public beds. In 2020, public nursing home admissions rose sharply to 33; however, this data point reflects the transfer of patients from one public nursing home facility to another (i.e., from GBHC to Delaware Hospital for the Chronically Ill) prior to the closure of GBHC in June 2020.

**Table 4: Delaware Nursing Homes, Total Number of Nursing Home Admissions, 2010-2020, by Facility Type and County**

Year	Private Facilities				Public Facilities	All Facilities
	New Castle County	Kent County	Sussex County	Total Private		
2010	6,406	1,353	3,247	11,006	119	11,125
2011	6,654	1,493	3,563	11,710	65	11,775
2012	6,566	1,696	3,477	11,739	31	11,770
2013	6,962	1,697	3,513	12,172	39	12,211
2014	6,816	1,726	3,983	12,525	50	12,575
2015	6,544	1,612	3,672	11,828	64	11,892
2016	6,238	1,666	3,576	11,480	33	11,513
2017	6,685	1,701	3,637	12,023	36	12,059
2018	6,722	1,944	3,199	11,865	5	11,870
2019	6,652	2,063	3,103	11,818	3	11,821
2020	4,665	1,357	2,183	8,205	33	8,238
2010-2020 % Change	-27.2%	0.3%	-32.8%	-25.4%	-72.3%	-26.0%
2019-2020 % Change	-29.9%	-34.2%	-29.6%	-30.6%	1000.0%	-30.3%

**Figure 5: Delaware Nursing Homes, Total Number of Nursing Home Admissions, 2010-2020, by Facility Type and County**



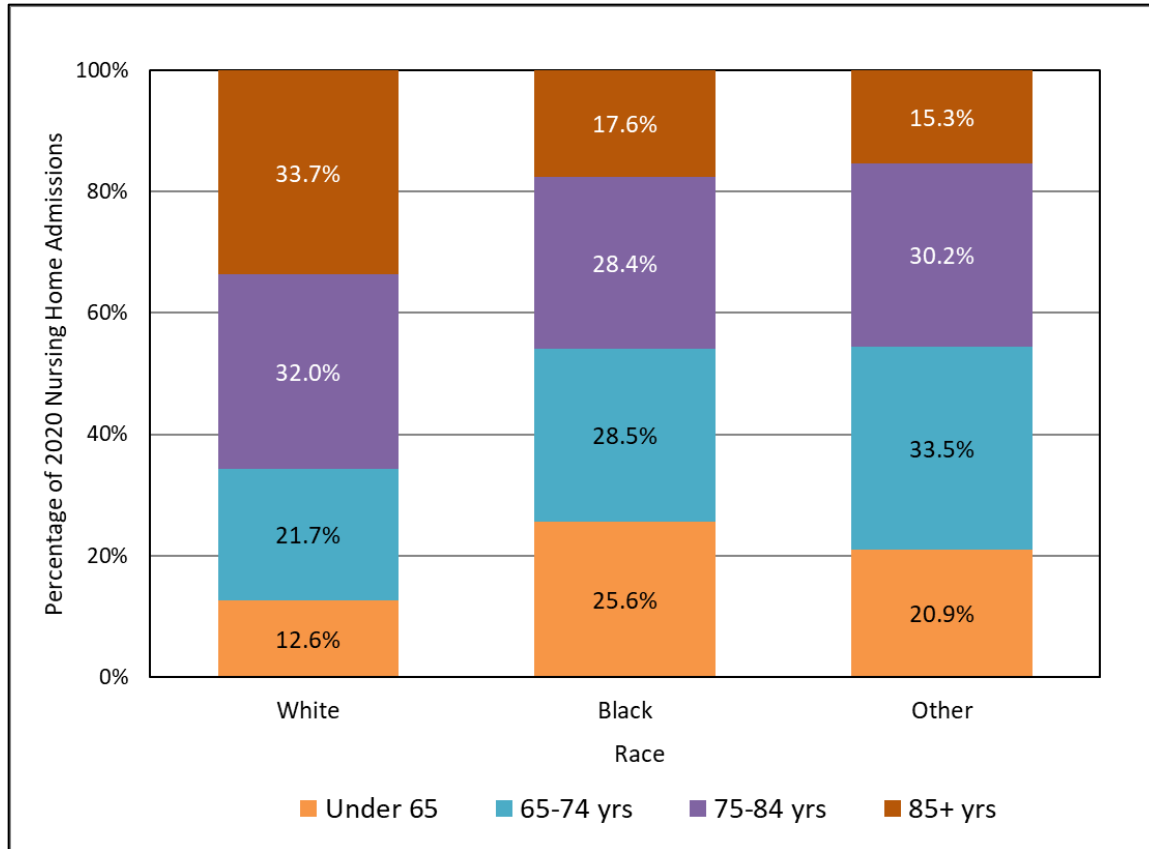
White patients accounted for 75.8% of all 2020 Delaware nursing home admissions (Table 5). Black patients and patients of other races accounted for 21.6% and 2.6% of 2020 nursing home admissions, respectively. This racial breakdown of nursing home admissions is in line with Delaware’s demographic distribution. Patients 75-84 years and 85 years or older accounted for 31.2% and 29.7%, respectively, of 2020 Delaware nursing home admissions. Twenty-three percent of 2020 nursing home admissions were individuals ages 65-74. The youngest category of nursing home patients – those under age 65 – accounted for 15.6% of 2020 admissions. (Refer to Appendix A for further information on Delaware nursing home admissions and discharges among the under 65 population.)

**Table 5: Number (Percentage) of Delaware Nursing Home Admissions, by Race and Age, 2020**

Race	Age				Total (by race)
	Under 65	65-74 yrs.	75-84 yrs.	85+ yrs.	
White	785 (12.6%)	1,358 (21.7%)	1,999 (32.0%)	2,104 (33.7%)	6,246 (75.8%)
Black	455 (25.6%)	506 (28.5%)	504 (28.4%)	312 (17.6%)	1,777 (21.6%)
Other	45 (20.9%)	72 (33.5%)	65 (30.2%)	33 (15.3%)	215 (2.6%)
Total (by age)	1,285 (15.6%)	1,936 (23.5%)	2,568 (31.2%)	2,449 (29.7%)	8,238 (100.0%)

The percentage of 2020 admissions under the age of 65 was higher among Black patients (25.6%) and patients of other races (20.9%) relative to White patients (12.6%) (Figure 6). Individuals under the age of 74 accounted for 54% of Black admissions and 54.1% of admissions among patients of other races; in comparison, just 34.3% of White admissions were patients under the age of 74. Accordingly, patients ages 85 and older accounted for a higher percentage of White admissions (33.7%) relative to Black admissions (17.6%) and admissions among patients of other races (15.3%).

**Figure 6: Racial Breakdown of Delaware Nursing Home Admissions, 2020, by Race and Age**



## DISCHARGES

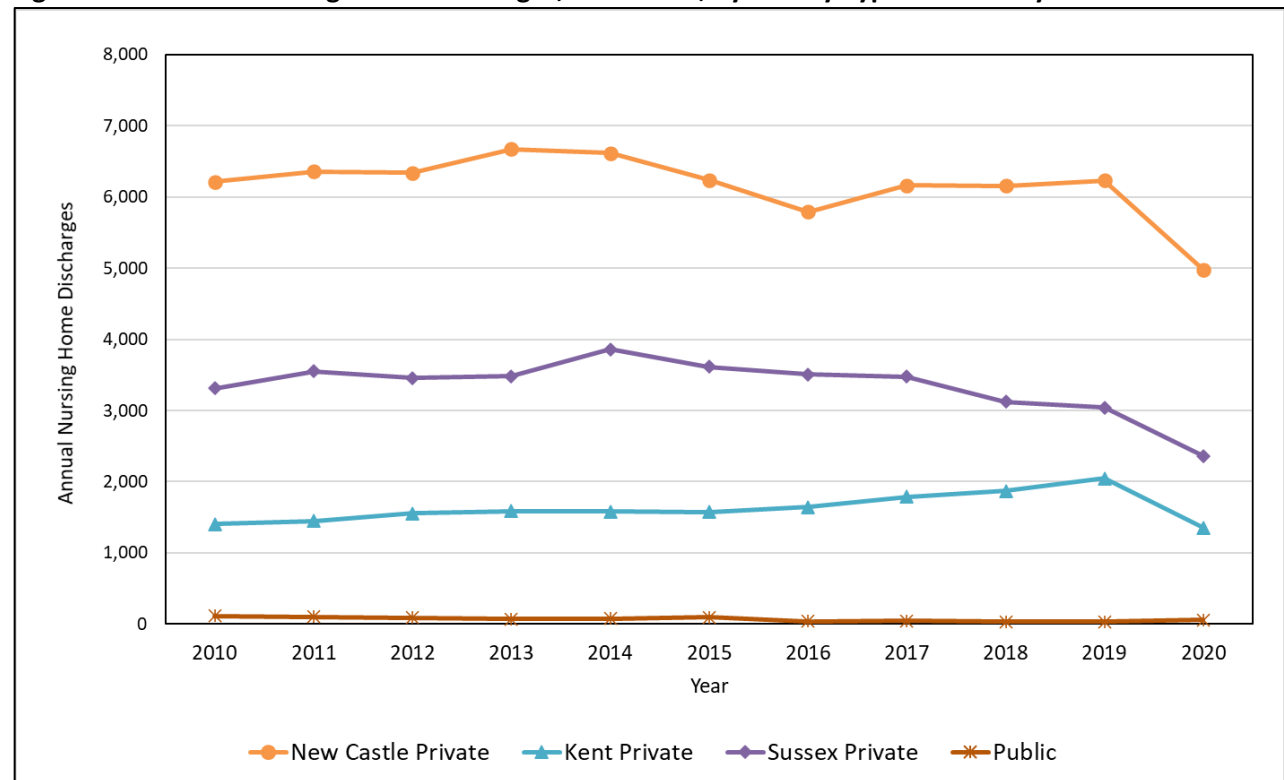
In 2020, Delaware nursing homes discharged 8,758 patients (Table 6; Figure 7), reflecting a sharp decline in discharges relative to the previous year and coinciding with the COVID-19 pandemic. From 2019-2020, private nursing home discharges fell 20.1%, 33.9%, and 22.3% in New Castle, Kent, and Sussex Counties, respectively. Prior to the pandemic (i.e., from 2010-2019), private nursing home discharge trends mirrored admission trends; that is, discharges from private nursing home facilities in all three counties fluctuated within a narrow range. Similar to public nursing home admissions, discharges from public nursing homes have fluctuated erratically over time. The falling number of public facility discharges reflect facility closures and/or reduction in the number of available licensed public beds. From 2019-2020, public nursing home discharges increased from 34 to 61; this increase largely reflects discharged patients from GBHC prior to the facility's closure in June 2020.



**Table 6: Delaware Nursing Home Discharges, by Facility Type and County, 2010-2020**

Year	Private Facilities				Public Facilities	All Facilities
	New Castle County	Kent County	Sussex County	Total Private		
2010	6,214	1,404	3,313	10,931	117	11,048
2011	6,356	1,447	3,551	11,354	103	11,457
2012	6,339	1,558	3,454	11,330	87	11,417
2013	6,674	1,587	3,479	11,740	74	11,814
2014	6,615	1,579	3,861	12,055	75	12,130
2015	6,239	1,576	3,614	11,429	97	11,526
2016	5,790	1,644	3,506	10,940	37	10,977
2017	6,163	1,792	3,476	11,431	48	11,479
2018	6,158	1,870	3,121	11,149	30	11,179
2019	6,235	2,044	3,040	11,319	34	11,353
2020	4,982	1,352	2,363	8,697	61	8,758
2010-2020 % Change	-19.8%	-3.7%	-28.7%	-20.4%	-47.9%	-20.7%
2019-2020 % Change	-20.1%	-33.9%	-22.3%	-23.2%	79.4%	-22.9%

**Figure 7: Delaware Nursing Home Discharges, 2010-2020, by Facility Type and County**



As in previous years, in 2020, discharge destination varied greatly by facility type (Table 7). Half of all patients discharged from private facilities in 2020 returned to their own home or a relative's home. Compared to private nursing home discharges, a larger percentage of patients discharged from public facilities were discharged due to death (49.2% vs. 16.1%, respectively).

**Table 7: Number (Percentage) of Delaware Nursing Home Discharges, by Facility Type and Discharge Destination, 2020**

Facility Type	Discharge Destination							
	Own or Relative's Home	Hospital	Assisted Living	Private LTCF	State Owned LTCF	Death	Other	Total
Private	4,531 (52.1%)	2,106 (24.2%)	310 (3.6%)	239 (2.7%)	19 (0.2%)	1,401 (16.1%)	91 (1.0%)	8,697 (100%)
Public	0 (0.0%)	8 (13.1%)	0 (0.0%)	1 (1.6%)	22 (36.1%)	30 (49.2%)	0 (0.0%)	61 (100.0%)
All Facilities	4,531 (51.7%)	2,114 (24.1%)	310 (3.5%)	240 (2.7%)	41 (0.5%)	1,431 (16.3%)	91 (1.0%)	8,758 (100.0%)

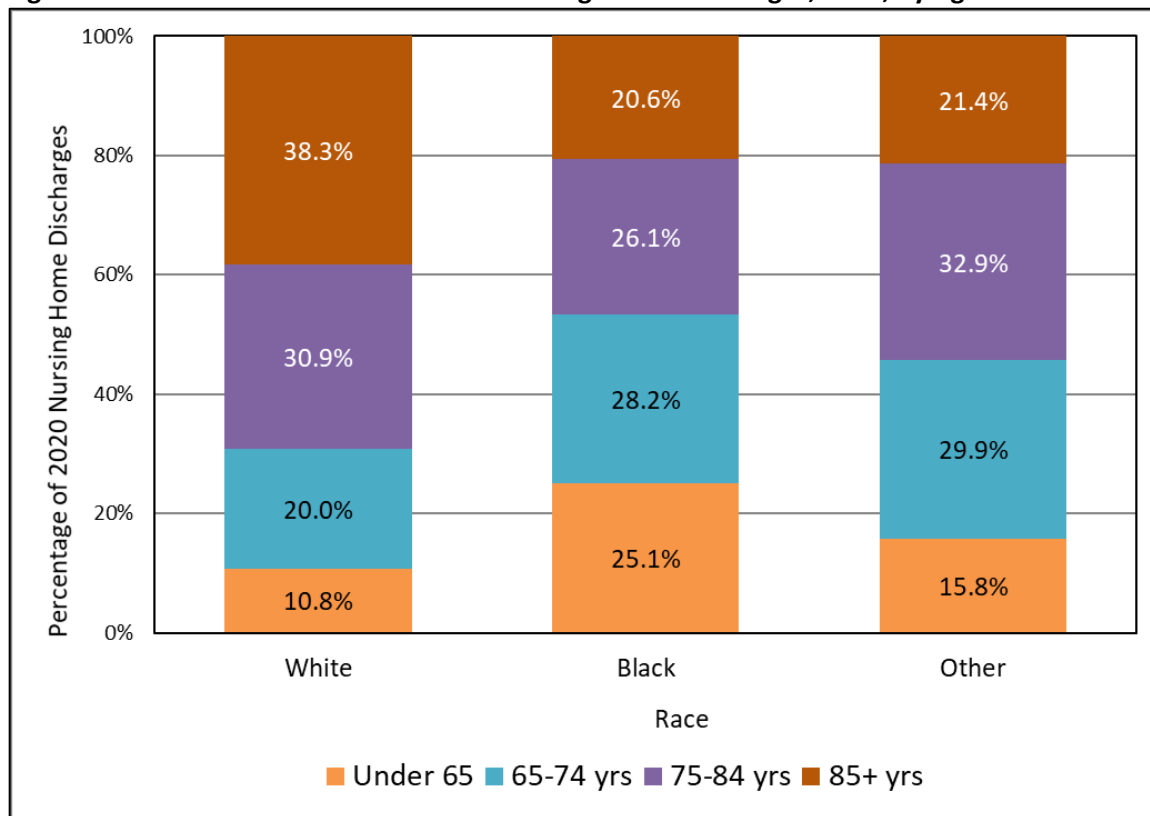
Discharge statistics mirror admission statistics in terms of patient race and age (Table 8; Figure 8). White patients accounted for 75.7% of Delaware nursing home discharges in 2020. Black patients and patients of other races accounted for 21.6% and 2.7% of 2020 nursing home discharges, respectively. Individuals 75-84 years and 85 years+ accounted for 29.9% and 34.0% of 2020 Delaware nursing home discharges, respectively. Just over one-fifth (22.1%) of 2020 nursing home discharges were individuals ages 65-74. The youngest category of nursing home patients – those under age 65 – accounted for the remaining 14.0% of 2020 discharges.

Relative to White patients, comparatively larger percentages of Black patients and patients of other were under the age of 74 (Figure 8). Fifty-three percent of Black discharges and 45.7% of discharges among patients of other races represented individuals under the age of 74; in comparison, just 30.8% of White discharges were patients ages 74 and younger. Accordingly, patients ages 85 and older accounted for a higher percentage of White discharges (38.3%) relative to Black discharges (20.6%) and discharges among patients of other races (21.4%).

**Table 8: Number (Percentage) of Delaware Nursing Home Discharges, by Race and Age, 2020**

Race	Age				Total (by race)
	Under 65	65-74 yrs.	75-84 yrs.	85+ yrs.	
White	713 (10.8%)	1,327 (20.0%)	2,051 (30.9%)	2,537 (38.3%)	6,628 (75.7%)
Black	475 (25.1%)	535 (28.2%)	495 (26.1%)	391 (20.6%)	1,896 (21.6%)
Other	37 (15.8%)	70 (29.9%)	77 (32.9%)	50 (21.4%)	234 (2.7%)
Total (by age)	1,225 (14.0%)	1,933 (22.1%)	2,622 (29.9%)	2,978 (34.0%)	8,758 (75.8%)

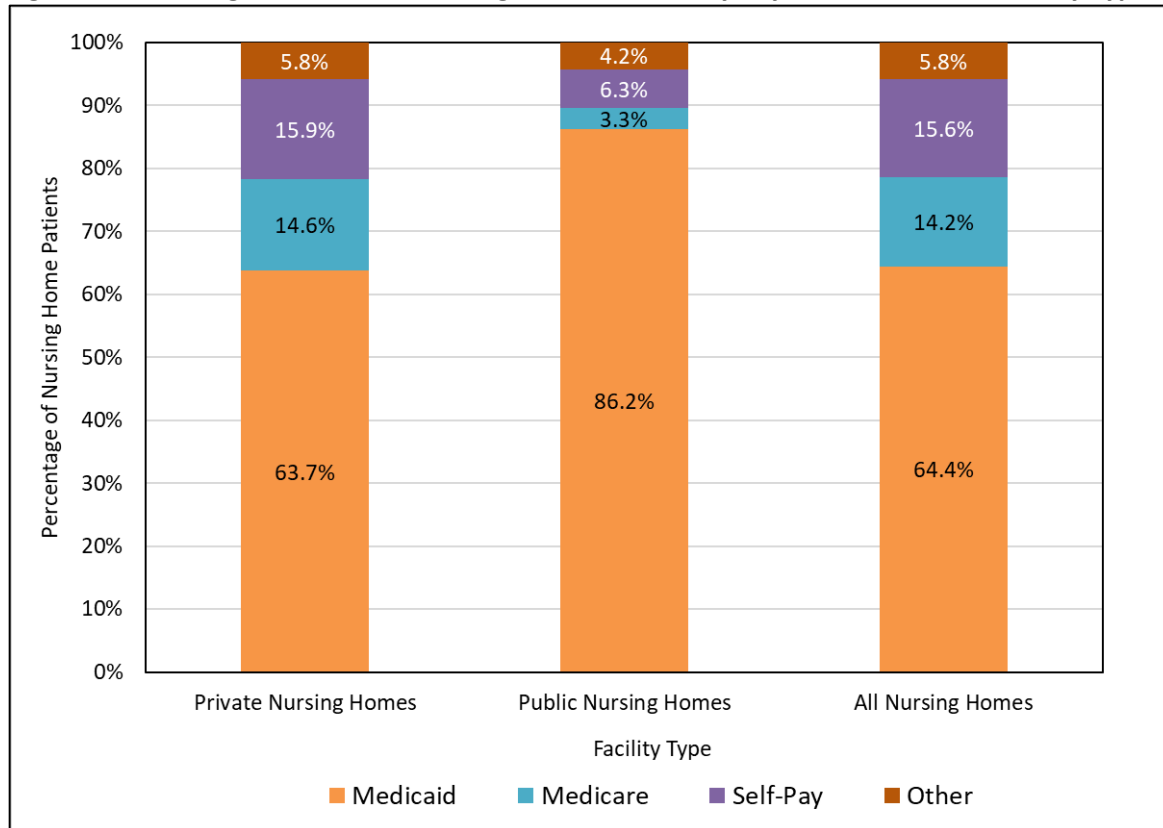
**Figure 8: Racial Breakdown of Delaware Nursing Home Discharges, 2020, by Age**



## SOURCE OF PAYMENT

Patient payment source for nursing home care varied by type of facility (Figure 9). In 2020, the majority of private and public nursing home patients used Medicaid as a source of payment, though a larger percentage of public nursing home patients used Medicaid as a source of payment relative to private nursing home patients (86.2% vs. 63.7%, respectively). In 2020, 14.6% of private Delaware nursing home patients used Medicare as a source of payment compared to just 3.3% of public nursing home patients. Sixteen percent of private nursing home residents and 6.3% of public nursing home patients self-paid for their care. A different payment source was utilized by 5.8% of private nursing home patients and 4.2% of public nursing home patients.

**Figure 9: Percentage of Delaware Nursing Home Patients by Payment Source and Facility Type, 2020**



## PART 2: 2020 FACILITY-LEVEL NURSING HOME UTILIZATION STATISTICS

**Table 9**  
**Total Billable Patient Days by Facility, 2020**

Nursing Home	2020 Patient Days	Nursing Home	2020 Patient Days
<b>NCC (Private)</b>		<b>Kent County (Private)</b>	
Brackenville Center	31,413	Cadia Rehab Capitol	36,594
Brandywine Nursing & Rehab	46,710	Courtland Manor	21,219
Cadia Rehab Broadmeadow	35,935	Delaware Veterans Home	24,619
Cadia Rehab Pike Creek	37,406	Pinnacle Rehab & Health	45,969
Cadia Rehab Silverside	38,193	Silver Lake Center	37,612
Churchman Village	28,538	The Center at Eden Hill	13,487
Forwood Manor	15,324	Westminster Village	20,662
Foulk Manor North	13,108	<b>Kent County (Private) Total</b>	<b>200,162</b>
Foulk Manor South	10,120		
Gilpin Hall	31,030	<b>Sussex County (Private)</b>	
Hillside Center	35,426	Atlantic Shores	57,516
Jeanne Jugan Residence	10,543	Cadia Rehab Renaissance	36,180
Kentmere Rehab & Healthcare	33,649	Country Rest Home	18,145
Kutz Rehab & Nursing	28,132	Delmar Nursing & Rehab	27,302
ManorCare Pike Creek	44,240	Harbor Health Care	50,316
ManorCare Wilmington	40,285	Harrison Senior Living	34,167
Millcroft	20,864	Lofland Park Center	35,010
New Castle Health & Rehab	39,341	Milford Center	34,077
Newark Manor	21,247	Polaris Healthcare	2,522
Parkview Nursing & Rehab	43,199	Seaford Center	37,247
Regal Heights Healthcare & Rehab	55,390	The Moorings at Lewes	11,151
Regency Healthcare & Rehab	31,242	WBC Manor House	16,007
Shipley Manor Health Care	16,282	<b>Sussex County (Private) Total</b>	<b>359,640</b>
Stonegates	13,069		
Weston Senior Living Center	5,374	<b>Total Private Facilities</b>	<b>1,312,241</b>
WBC Cokesbury Village	12,686		
WBC Country House	13,693	<b>Public Facilities</b>	
<b>NCC (Private) Total</b>	<b>752,439</b>	DE Hosp for Chronically Ill	36,277
		Governor Bacon Health Center	3,787
		<b>Public Total</b>	<b>40,064</b>
		<b>Total All Facilities</b>	<b>1,352,305</b>

Notes: NCC=New Castle County.

**Table 10**  
**Weighted Occupancy Rates by Facility, Type, and County, 2020**

<b>Nursing Home</b>	<b>Billable Patient Days 2020</b>	<b>Number of Licensed Beds 2020 (weighted)</b>	<b>Licensed Bed Days 2020 (weighted)</b>	<b>Occupancy Rate 2020 (weighted)</b>
<b>NCC (Private)</b>				
Brackenville Center	31,413	104	37,960	82.8%
Brandywine Nursing & Rehab	46,710	169	61,685	75.7%
Cadia Rehab Broadmeadow	35,935	120	43,800	82.0%
Cadia Rehab Pike Creek	37,406	130	47,450	78.8%
Cadia Rehab Silverside	38,193	117	42,705	89.4%
Churchman Village	28,538	101	36,865	77.4%
Forwood Manor	15,324	72	26,280	58.3%
Foulk Manor North	13,108	46	16,790	78.1%
Foulk Manor South	10,120	46	16,790	60.3%
Gilpin Hall	31,030	96	35,040	88.6%
Hillside Center	35,426	106	38,690	91.6%
Jeanne Jugan Residence	10,543	40	14,600	72.2%
Kentmere Rehab & Healthcare	33,649	104	37,960	88.6%
Kutz Rehab & Nursing	28,132	90	32,850	85.6%
ManorCare Pike Creek	44,240	177	64,605	68.5%
ManorCare Wilmington	40,285	138	50,370	80.0%
Millcroft	20,864	110	40,150	52.0%
New Castle Health & Rehab	39,341	120	43,800	89.8%
Newark Manor	21,247	67	24,455	86.9%
Parkview Nursing & Rehab	43,199	150	54,750	78.9%
Regal Heights Healthcare & Rehab	55,390	172	62,780	88.2%
Regency Healthcare & Rehab	31,242	100	36,500	85.6%
Shipley Manor Health Care	16,282	82	29,930	54.4%
Stonegates	13,069	49	17,885	73.1%
Weston Senior Living Center	5,374	19	6,935	77.5%
WBC Cokesbury Village	12,686	45	16,425	77.2%
WBC Country House	13,693	48	17,520	78.2%
<b>NCC (Private) Total</b>	<b>752,439</b>	<b>2,618</b>	<b>955,570</b>	<b>78.7%</b>

**Table 10**  
**(Continued)**  
**Weighted Occupancy Rates by Facility, Type, and County, 2020**

<b>Nursing Home</b>	<b>Billable Patient Days 2020</b>	<b>Number of Licensed Beds 2020 (weighted)</b>	<b>Licensed Bed Days 2020 (weighted)</b>	<b>Occupancy Rate 2020 (weighted)</b>
<b>Kent County (Private)</b>				
Cadia Rehab Capitol	36,594	120	43,800	83.5%
Courtland Manor	21,219	70	25,550	83.0%
Delaware Veterans Home	24,619	147	53,473	46.0%
Pinnacle Rehab & Health	45,969	151	55,115	83.4%
Silver Lake Center	37,612	120	43,800	85.9%
The Center at Eden Hill	13,487	80	29,200	46.2%
Westminster Village	20,662	74	27,010	76.5%
<b>Kent County (Private) Total</b>	<b>200,162</b>	<b>762</b>	<b>277,948</b>	<b>72.0%</b>
<b>Sussex County (Private)</b>				
Atlantic Shores	57,516	181	66,065	87.1%
Cadia Rehab Renaissance	36,180	130	47,450	76.2%
Country Rest Home	18,145	56	20,440	88.8%
Delmar Nursing & Rehab	27,302	109	39,785	68.6%
Harbor Health Care	50,316	179	65,335	77.0%
Harrison Senior Living	34,167	139	50,735	67.3%
Lofland Park Center	35,010	110	40,150	87.2%
Milford Center	34,077	136	49,640	68.6%
Polaris Healthcare	2,522	26	7,930	31.8%
Seaford Center	37,247	124	45,260	82.3%
The Moorings at Lewes	11,151	40	14,600	76.4%
WBC Manor House	16,007	60	21,900	73.1%
<b>Sussex County (Private) Total</b>	<b>359,640</b>	<b>1,290</b>	<b>469,290</b>	<b>76.6%</b>
<b>Total Private Facilities</b>	<b>1,312,241</b>	<b>4,670</b>	<b>1,702,808</b>	<b>77.1%</b>
<b>Public Facilities</b>				
DE Hosp for Chronically Ill	36,277	205	74,825	48.5%
Governor Bacon Health Center	3,787	78	8,664	43.7%
<b>Public Total</b>	<b>40,064</b>	<b>283</b>	<b>83,489</b>	<b>48.0%</b>
<b>Total All Facilities</b>	<b>1,352,305</b>	<b>4,953</b>	<b>1,786,297</b>	<b>75.7%</b>

Notes: NCC=New Castle County. Weighted occupancy rates for individual facilities are calculated as the ratio of Billable Patient Days and Licensed Bed Days. Licensed Bed Days are calculated as (Number of Licensed beds (as of December of the reporting year))\*(Total days the facility was open during the reporting year). Weighted occupancy rates at county, facility type, and state levels are calculated as the ratio of Billable Patient Days (sum of each facility in the category) and Licensed Bed Days (sum of each facility in the category).

**Table 11**  
**Patient Source of Payment by Facility, Type, and County, 2020**

<b>Nursing Home</b>	<b>Medicaid</b>	<b>Medicare</b>	<b>Self-Pay</b>	<b>Other*</b>	<b>Total</b>
<b>NCC (Private Facilities)</b>					
Brackenville Center	58.4%	12.7%	23.6%	5.0%	100%
Brandywine Nursing & Rehab	85.5%	8.8%	5.7%	0.0%	100%
Cadia Rehab Broadmeadow	62.8%	22.3%	9.0%	5.9%	100%
Cadia Rehab Pike Creek	49.0%	31.1%	6.8%	13.1%	100%
Cadia Rehab Silverside	40.6%	27.7%	10.7%	21.0%	100%
Churchman Village	65.0%	19.2%	9.8%	6.0%	100%
Forwood Manor	34.5%	28.5%	33.7%	3.2%	100%
Foulk Manor North	34.0%	0.0%	66.0%	0.0%	100%
Foulk Manor South	0.0%	0.0%	100.0%	0.0%	100%
Gilpin Hall	90.2%	5.3%	3.8%	0.7%	100%
Hillside Center	82.8%	10.8%	0.8%	5.6%	100%
Jeanne Jagan Residence	79.7%	0.0%	20.3%	0.0%	100%
Kentmere Rehab & Healthcare	62.1%	19.9%	14.6%	3.4%	100%
Kutz Rehab & Nursing	65.9%	9.4%	24.7%	0.0%	100%
ManorCare Pike Creek	57.3%	20.7%	8.4%	13.5%	100%
ManorCare Wilmington	64.4%	24.3%	6.7%	4.6%	100%
Millcroft	50.1%	13.5%	36.2%	0.1%	100%
New Castle Health & Rehab	83.7%	6.5%	6.2%	3.5%	100%
Newark Manor	82.7%	0.0%	17.3%	0.0%	100%
Parkview Nursing & Rehab	84.8%	7.6%	4.6%	3.1%	100%
Regal Heights Healthcare & Rehab	70.6%	4.2%	7.9%	17.2%	100%
Regency Healthcare & Rehab	80.5%	7.9%	7.5%	4.1%	100%
Shipley Manor Health Care	65.7%	23.9%	9.7%	0.7%	100%
Stonegates	0.0%	5.6%	94.4%	0.0%	100%
Weston Senior Living Center	60.0%	24.2%	15.8%	0.0%	100%
WBC Cokesbury Village	0.0%	7.1%	90.9%	2.0%	100%
WBC Country House	0.0%	3.6%	93.5%	2.9%	100%
<b>NCC (Private) Total</b>	<b>63.1%</b>	<b>13.8%</b>	<b>17.3%</b>	<b>5.9%</b>	<b>100%</b>



**Table 11**  
**(Continued)**  
**Patient Source of Payment, by Facility, Type, and County, 2020**

<b>Nursing Home</b>	<b>Medicaid</b>	<b>Medicare</b>	<b>Self-Pay</b>	<b>Other*</b>	<b>Total</b>
<b>Kent County (Private)</b>					
Cadia Rehab Capitol	75.4%	15.8%	5.1%	3.7%	100.0%
Courtland Manor	86.8%	0.3%	12.0%	0.9%	100.0%
Delaware Veterans Home	35.4%	0.0%	37.0%	27.5%	100.0%
Pinnacle Rehab & Health	76.8%	17.1%	3.3%	2.9%	100.0%
Silver Lake Center	86.0%	7.8%	2.2%	4.0%	100.0%
The Center at Eden Hill	0.0%	84.8%	0.9%	14.3%	100.0%
Westminster Village	43.9%	19.4%	30.2%	6.5%	100.0%
<b>Kent County (Private) Total</b>	<b>65.4%</b>	<b>16.0%</b>	<b>11.4%</b>	<b>7.2%</b>	<b>100.0%</b>
<b>Sussex County (Private)</b>					
Atlantic Shores	68.1%	24.0%	5.6%	2.3%	100.0%
Cadia Rehab Renaissance	67.6%	23.4%	5.1%	3.9%	100.0%
Country Rest Home	0.0%	0.0%	99.5%	0.5%	100.0%
Delmar Nursing & Rehab	77.8%	16.6%	4.9%	0.7%	100.0%
Harbor Health Care	70.4%	11.1%	7.2%	11.3%	100.0%
Harrison Senior Living	60.7%	15.6%	13.5%	10.2%	100.0%
Lofland Park Center	76.1%	15.8%	3.6%	4.5%	100.0%
Milford Center	78.7%	12.2%	3.5%	5.6%	100.0%
Polaris Healthcare	39.5%	48.8%	7.0%	4.7%	100.0%
Seaford Center	82.4%	10.0%	4.1%	3.5%	100.0%
The Moorings at Lewes	5.1%	22.8%	70.9%	1.1%	100.0%
WBC Manor House	22.2%	3.9%	69.7%	4.1%	100.0%
<b>Sussex County (Private) Total</b>	<b>64.2%</b>	<b>15.5%</b>	<b>15.4%</b>	<b>5.0%</b>	<b>100.0%</b>
<b>Total Private Facilities</b>	<b>63.7%</b>	<b>14.6%</b>	<b>15.9%</b>	<b>5.8%</b>	<b>100.0%</b>
<b>Public Facilities</b>					
DE Hosp for Chronically Ill	85.9%	3.6%	6.5%	4.0%	100.0%
Governor Bacon Health Center	89.1%	0.0%	4.2%	6.7%	100.0%
<b>Public Total</b>	<b>86.2%</b>	<b>3.3%</b>	<b>6.3%</b>	<b>4.2%</b>	<b>100.0%</b>
<b>Total All Facilities</b>	<b>64.4%</b>	<b>14.2%</b>	<b>15.6%</b>	<b>5.8%</b>	<b>100.0%</b>

Notes: The "other" payment category includes charitable pay, partial pay, private insurance, Veterans benefits, out-of-state Medicaid, and, in some cases, patients for whom medical status was pending at admissions. Percentages are based on end of month reports on the number of patients by source of payment.

**Table 12**  
**Number of Admissions by Age, Gender, County and Facility, 2020**

Nursing Home	<65 Male	< 65 Female	65-74 Male	65-74 Female	75-84 Male	75-84 Female	85+ Male	85+ Female	Total Male	Total Female	Total M+F
<b>NCC (Private)</b>											
Brackenville Center	14	13	24	38	26	47	21	66	85	164	249
Brandywine Nursing & Rehab	5	2	30	21	18	29	31	38	84	90	174
Cadia Rehab Broadmeadow	11	22	29	51	43	73	39	63	122	209	331
Cadia Rehab Pike Creek	109	84	49	79	55	57	29	63	242	283	525
Cadia Rehab Silverside	34	19	52	56	58	76	28	79	172	230	402
Churchman Village	15	8	16	20	18	30	24	34	73	92	165
Forwood Manor	0	0	4	14	30	32	30	80	64	126	190
Foulk Manor North	0	0	0	1	5	0	8	18	13	19	32
Foulk Manor South	0	0	0	1	0	4	3	5	3	10	13
Gilpin Hall	0	3	3	1	2	6	2	7	7	17	24
Hillside Center	53	38	50	38	40	35	22	21	165	132	297
Jeanne Jugan Residence	0	0	0	1	1	5	2	2	3	8	11
Kentmere Rehab &	4	5	18	17	39	48	29	72	90	142	232
Kutz Rehab & Nursing	1	2	3	6	11	15	14	23	29	46	75
ManorCare Pike Creek	70	66	81	103	83	107	77	92	311	368	679
ManorCare Wilmington	39	37	43	52	35	42	22	44	139	175	314
Millcroft	1	0	3	4	10	19	17	37	31	60	91
New Castle Health & Rehab	30	23	27	34	13	25	9	14	79	96	175
Newark Manor	0	0	0	1	0	17	3	5	3	23	26
Parkview Nursing & Rehab	14	9	19	24	12	23	12	28	57	84	141
Regal Heights Healthcare &	7	4	25	8	25	21	18	28	75	61	136
Regency Healthcare & Rehab	9	9	10	14	7	28	6	9	32	60	92
ShIPLEY Manor Health Care	0	1	0	3	7	23	18	42	25	69	94
Stonegates	0	0	1	2	2	9	11	19	14	30	44
Weston Senior Living Center	3	0	0	3	9	6	0	6	12	15	27
WBC Cokesbury Village	0	0	0	1	2	7	14	31	16	39	55
WBC Country House	0	0	0	0	5	18	17	31	22	49	71
<b>NCC (Private) Total</b>	<b>419</b>	<b>345</b>	<b>487</b>	<b>593</b>	<b>556</b>	<b>802</b>	<b>506</b>	<b>957</b>	<b>1,968</b>	<b>2,697</b>	<b>4,665</b>

**Table 12**  
**(Continued)**  
**Number of Admissions by Age, Gender, County and Facility, 2020**

Nursing Home	<65 Male	< 65 Female	65-74 Male	65-74 Female	75-84 Male	75-84 Female	85+ Male	85+ Female	Total Male	Total Female	Total M+F
<b>Kent County (Private)</b>											
Cadia Rehab Capitol	12	7	18	20	19	23	22	36	71	86	157
Courtland Manor	0	1	1	0	0	5	4	5	5	11	16
Delaware Veterans Home	0	0	2	0	4	1	4	1	10	2	12
Pinnacle Rehab & Health	38	28	57	39	46	39	15	19	156	125	281
Silver Lake Center	38	28	35	29	35	35	18	42	126	134	260
The Center at Eden Hill	19	26	42	79	75	103	55	86	191	294	485
Westminster Village	2	6	13	15	20	28	16	46	51	95	146
<b>Kent County (Private) Total</b>	<b>109</b>	<b>96</b>	<b>168</b>	<b>182</b>	<b>199</b>	<b>234</b>	<b>134</b>	<b>235</b>	<b>610</b>	<b>747</b>	<b>1,357</b>
<b>Sussex County (Private)</b>											
Atlantic Shores	34	28	56	40	47	55	37	53	174	176	350
Cadia Rehab Renaissance	9	4	25	38	56	87	35	66	125	195	320
Country Rest Home	0	0	3	1	12	10	8	20	23	31	54
Delmar Nursing & Rehab	1	2	4	6	9	13	12	10	26	31	57
Harbor Health Care	6	1	15	17	19	33	18	27	58	78	136
Harrison Senior Living	4	14	33	26	52	72	24	51	113	163	276
Lofland Park Center	17	25	24	39	40	37	28	31	109	132	241
Milford Center	55	47	34	40	50	55	21	31	160	173	333
Polaris Healthcare	8	5	5	12	7	14	3	17	23	48	71
Seaford Center	29	17	26	39	29	24	5	15	89	95	184
The Moorings at Lewes	0	0	6	2	15	25	14	36	35	63	98
WBC Manor House	0	0	1	3	4	5	13	37	18	45	63
<b>Sussex County (Private) Total</b>	<b>163</b>	<b>143</b>	<b>232</b>	<b>263</b>	<b>340</b>	<b>430</b>	<b>218</b>	<b>394</b>	<b>953</b>	<b>1,230</b>	<b>2,183</b>
<b>Total Private Facilities</b>	<b>691</b>	<b>584</b>	<b>887</b>	<b>1,038</b>	<b>1,095</b>	<b>1,466</b>	<b>858</b>	<b>1,586</b>	<b>3,531</b>	<b>4,674</b>	<b>8,205</b>
<b>Public Facilities</b>											
DE Hosp for Chronically Ill	4	6	5	6	2	5	1	4	12	21	33
Governor Bacon Health Center	0	0	0	0	0	0	0	0	0	0	0
<b>Public Total</b>	<b>4</b>	<b>6</b>	<b>5</b>	<b>6</b>	<b>2</b>	<b>5</b>	<b>1</b>	<b>4</b>	<b>12</b>	<b>21</b>	<b>33</b>
<b>Total All Facilities</b>	<b>695</b>	<b>590</b>	<b>892</b>	<b>1,044</b>	<b>1,097</b>	<b>1,471</b>	<b>859</b>	<b>1,590</b>	<b>3,543</b>	<b>4,695</b>	<b>8,238</b>

Notes: NCC=New Castle County.

**Table 13**  
**Percentage of Admissions by Age, County and Facility, 2020**

Nursing Home	Under 65	65-74	75-84	85+	Total
<b>NCC (Private)</b>					
Brackenville Center	10.8%	24.9%	29.3%	34.9%	100.0%
Brandywine Nursing & Rehab	4.0%	29.3%	27.0%	39.7%	100.0%
Cadia Rehab Broadmeadow	10.0%	24.2%	35.0%	30.8%	100.0%
Cadia Rehab Pike Creek	36.8%	24.4%	21.3%	17.5%	100.0%
Cadia Rehab Silverside	13.2%	26.9%	33.3%	26.6%	100.0%
Churchman Village	13.9%	21.8%	29.1%	35.2%	100.0%
Forwood Manor	0.0%	9.5%	32.6%	57.9%	100.0%
Foult Manor North	0.0%	3.1%	15.6%	81.3%	100.0%
Foult Manor South	0.0%	7.7%	30.8%	61.5%	100.0%
Gilpin Hall	12.5%	16.7%	33.3%	37.5%	100.0%
Hillside Center	30.6%	29.6%	25.3%	14.5%	100.0%
Jeanne Jugan Residence	0.0%	9.1%	54.5%	36.4%	100.0%
Kentmere Rehab & Healthcare	3.9%	15.1%	37.5%	43.5%	100.0%
Kutz Rehab & Nursing	4.0%	12.0%	34.7%	49.3%	100.0%
ManorCare Pike Creek	20.0%	27.1%	28.0%	24.9%	100.0%
ManorCare Wilmington	24.2%	30.3%	24.5%	21.0%	100.0%
Millcroft	1.1%	7.7%	31.9%	59.3%	100.0%
New Castle Health & Rehab	30.3%	34.9%	21.7%	13.1%	100.0%
Newark Manor	0.0%	3.8%	65.4%	30.8%	100.0%
Parkview Nursing & Rehab	16.3%	30.5%	24.8%	28.4%	100.0%
Regal Heights Healthcare & Rehab	8.1%	24.3%	33.8%	33.8%	100.0%
Regency Healthcare & Rehab	19.6%	26.1%	38.0%	16.3%	100.0%
Shipley Manor Health Care	1.1%	3.2%	31.9%	63.8%	100.0%
Stonegates	0.0%	6.8%	25.0%	68.2%	100.0%
Weston Senior Living Center	11.1%	11.1%	55.6%	22.2%	100.0%
WBC Cokesbury Village	0.0%	1.8%	16.4%	81.8%	100.0%
WBC Country House	0.0%	0.0%	32.4%	67.6%	100.0%
<b>NCC (Private) Total</b>	<b>16.4%</b>	<b>23.2%</b>	<b>29.1%</b>	<b>31.4%</b>	<b>100.0%</b>

**Table 13**  
**(Continued)**  
**Percentage of Admissions by Age, County and Facility, 2020**

Nursing Home	Under 65	65-74	75-84	85+	Total
<b>Kent County (Private)</b>					
Cadia Rehab Capitol	12.1%	24.2%	26.8%	36.9%	100.0%
Courtland Manor	6.3%	6.3%	31.3%	56.3%	100.0%
Delaware Veterans Home	0.0%	16.7%	41.7%	41.7%	100.0%
Pinnacle Rehab & Health	23.5%	34.2%	30.2%	12.1%	100.0%
Silver Lake Center	25.4%	24.6%	26.9%	23.1%	100.0%
The Center at Eden Hill	9.3%	24.9%	36.7%	29.1%	100.0%
Westminster Village	5.5%	19.2%	32.9%	42.5%	100.0%
<b>Kent County (Private) Total</b>	<b>15.1%</b>	<b>25.8%</b>	<b>31.9%</b>	<b>27.2%</b>	<b>100.0%</b>
<b>Sussex County (Private)</b>	<b>14.0%</b>	<b>22.7%</b>	<b>35.3%</b>	<b>28.0%</b>	<b>100.0%</b>
Atlantic Shores	17.7%	27.4%	29.1%	25.7%	100.0%
Cadia Rehab Renaissance	4.1%	19.7%	44.7%	31.6%	100.0%
Country Rest Home	0.0%	7.4%	40.7%	51.9%	100.0%
Delmar Nursing & Rehab	5.3%	17.5%	38.6%	38.6%	100.0%
Harbor Health Care	5.1%	23.5%	38.2%	33.1%	100.0%
Harrison Senior Living	6.5%	21.4%	44.9%	27.2%	100.0%
Lofland Park Center	17.4%	26.1%	32.0%	24.5%	100.0%
Milford Center	30.6%	22.2%	31.5%	15.6%	100.0%
Polaris Healthcare	18.3%	23.9%	29.6%	28.2%	100.0%
Seaford Center	25.0%	35.3%	28.8%	10.9%	100.0%
The Moorings at Lewes	0.0%	8.2%	40.8%	51.0%	100.0%
WBC Manor House	0.0%	6.3%	14.3%	79.4%	100.0%
<b>Sussex County (Private) Total</b>	<b>15.5%</b>	<b>23.5%</b>	<b>31.2%</b>	<b>29.8%</b>	<b>100.0%</b>
<b>Total Private Facilities</b>					
<b>Public Facilities</b>					
DE Hosp for Chronically Ill	30.3%	33.3%	21.2%	15.2%	100.0%
Governor Bacon Health Center	N/A	N/A	N/A	N/A	N/A
<b>Public Total</b>	<b>30.3%</b>	<b>33.3%</b>	<b>21.2%</b>	<b>15.2%</b>	<b>100.0%</b>
<b>Total All Facilities</b>	<b>15.6%</b>	<b>23.5%</b>	<b>31.2%</b>	<b>29.7%</b>	<b>100.0%</b>

Note: NCC=New Castle County.

**Table 14**  
**Percentage of Admissions by Gender, County and Facility, 2020**

<b>Nursing Home</b>	<b>Male</b>	<b>Female</b>	<b>Nursing Home</b>	<b>Male</b>	<b>Female</b>
<b>NCC (Private)</b>			<b>Kent County (Private)</b>		
Brackenville Center	34.1%	65.9%	Cadia Rehab Capitol	45.2%	54.8%
Brandywine Nursing & Rehab	48.3%	51.7%	Courtland Manor	31.3%	68.8%
Cadia Rehab Broadmeadow	36.9%	63.1%	Delaware Veterans Home	83.3%	16.7%
Cadia Rehab Pike Creek	46.1%	53.9%	Pinnacle Rehab & Health	55.5%	44.5%
Cadia Rehab Silverside	42.8%	57.2%	Silver Lake Center	48.5%	51.5%
Churchman Village	44.2%	55.8%	The Center at Eden Hill	39.4%	60.6%
Forwood Manor	33.7%	66.3%	Westminster Village	34.9%	65.1%
Foulk Manor North	40.6%	59.4%	<b>Kent County (Private) Total</b>	<b>45.0%</b>	<b>55.0%</b>
Foulk Manor South	23.1%	76.9%			
Gilpin Hall	29.2%	70.8%	<b>Sussex County (Private)</b>		
Hillside Center	55.6%	44.4%	Atlantic Shores	49.7%	50.3%
Jeanne Jugan Residence	27.3%	72.7%	Cadia Rehab Renaissance	39.1%	60.9%
Kentmere Rehab & Healthcare	38.8%	61.2%	Country Rest Home	42.6%	57.4%
Kutz Rehab & Nursing	38.7%	61.3%	Delmar Nursing & Rehab	45.6%	54.4%
ManorCare Pike Creek	45.8%	54.2%	Harbor Health Care	42.6%	57.4%
ManorCare Wilmington	44.3%	55.7%	Harrison Senior Living	40.9%	59.1%
Millcroft	34.1%	65.9%	Lofland Park Center	45.2%	54.8%
New Castle Health & Rehab	45.1%	54.9%	Milford Center	48.0%	52.0%
Newark Manor	11.5%	88.5%	Polaris Healthcare	32.4%	67.6%
Parkview Nursing & Rehab	40.4%	59.6%	Seaford Center	48.4%	51.6%
Regal Heights Healthcare & Rehab	55.1%	44.9%	The Moorings at Lewes	35.7%	64.3%
Regency Healthcare & Rehab	34.8%	65.2%	WBC Manor House	28.6%	71.4%
Shipley Manor Health Care	26.6%	73.4%	<b>Sussex County (Private) Total</b>	<b>43.7%</b>	<b>56.3%</b>
Stonegates	31.8%	68.2%			
Weston Senior Living Center	44.4%	55.6%	<b>Total Private Facilities</b>	<b>43.0%</b>	<b>57.0%</b>
WBC Cokesbury Village	29.1%	70.9%			
WBC Country House	31.0%	69.0%	<b>Public Facilities</b>		
<b>NCC (Private) Total</b>	<b>42.2%</b>	<b>57.8%</b>	DE Hosp for Chronically Ill	36.4%	63.6%
			Governor Bacon Health Center	N/A	N/A
			<b>Public Total</b>	<b>36.4%</b>	<b>63.6%</b>
			<b>Total All Facilities</b>	<b>43.0%</b>	<b>57.0%</b>

Note: NCC=New Castle County

**Table 15**  
**Number of White Admissions by Age, Gender, County and Facility, 2020**

Nursing Home	<65 Male	< 65 Female	65-74 Male	65-74 Female	75-84 Male	75-84 Female	85+ Male	85+ Female	Total Male	Total Female	Total M+F
<b>NCC (Private)</b>											
Brackenville Center	10	9	17	32	21	33	19	61	67	135	202
Brandywine Nursing & Rehab	4	2	17	12	7	17	22	31	50	62	112
Cadia Rehab Broadmeadow	7	15	21	42	31	60	31	55	90	172	262
Cadia Rehab Pike Creek	52	53	28	49	37	39	26	47	143	188	331
Cadia Rehab Silverside	16	11	33	36	41	55	24	65	114	167	281
Churchman Village	15	5	11	15	15	25	23	32	64	77	141
Forwood Manor	0	0	4	12	24	28	24	78	52	118	170
Foulk Manor North	0	0	0	1	3	0	8	17	11	18	29
Foulk Manor South	0	0	0	1	0	4	3	5	3	10	13
Gilpin Hall	0	2	3	0	2	3	0	4	5	9	14
Hillside Center	29	15	21	16	18	17	10	7	78	55	133
Jeanne Jugan Residence	0	0	0	1	1	5	2	2	3	8	11
Kentmere Rehab & Healthcare	1	3	12	8	30	39	19	48	62	98	160
Kutz Rehab & Nursing	0	2	3	6	10	13	13	22	26	43	69
ManorCare Pike Creek	45	37	59	77	59	83	61	75	224	272	496
ManorCare Wilmington	18	17	32	24	27	34	21	38	98	113	211
Millcroft	0	0	2	4	8	16	17	31	27	51	78
New Castle Health & Rehab	12	11	15	17	7	14	7	7	41	49	90
Newark Manor	0	0	0	0	0	16	3	5	3	21	24
Parkview Nursing & Rehab	4	8	11	12	7	15	5	23	27	58	85
Regal Heights Healthcare &	2	0	12	4	21	17	14	28	49	49	98
Regency Healthcare & Rehab	6	2	3	5	5	13	3	1	17	21	38
Shipley Manor Health Care	0	1	0	3	6	23	17	42	23	69	92
Stonegates	0	0	1	2	2	9	11	19	14	30	44
Weston Senior Living Center	3	0	0	3	3	3	0	6	6	12	18
WBC Cokesbury Village	0	0	0	1	1	7	14	30	15	38	53
WBC Country House	0	0	0	0	5	18	17	31	22	49	71
<b>NCC (Private) Total</b>	<b>224</b>	<b>193</b>	<b>305</b>	<b>383</b>	<b>391</b>	<b>606</b>	<b>414</b>	<b>810</b>	<b>1,334</b>	<b>1,992</b>	<b>3,326</b>

**Table 15**  
**(Continued)**

**Number of White Admissions by Age, Gender, County and Facility, 2020**

<b>Nursing Home</b>	<b>&lt;65 Male</b>	<b>&lt; 65 Female</b>	<b>65-74 Male</b>	<b>65-74 Female</b>	<b>75-84 Male</b>	<b>75-84 Female</b>	<b>85+ Male</b>	<b>85+ Female</b>	<b>Total Male</b>	<b>Total Female</b>	<b>Total M+F</b>
<b>Kent County (Private)</b>											
Cadia Rehab Capitol	9	6	9	20	16	19	19	32	53	77	130
Courtland Manor	0	1	0	0	0	4	3	2	3	7	10
Delaware Veterans Home	0	0	2	0	3	1	4	1	9	2	11
Pinnacle Rehab & Health	31	22	30	28	29	26	14	17	104	93	197
Silver Lake Center	21	18	24	22	25	23	12	31	82	94	176
The Center at Eden Hill	11	14	33	57	63	72	47	75	154	218	372
Westminster Village	1	3	9	13	14	22	15	43	39	81	120
<b>Kent County (Private) Total</b>	<b>73</b>	<b>64</b>	<b>107</b>	<b>140</b>	<b>150</b>	<b>167</b>	<b>114</b>	<b>201</b>	<b>444</b>	<b>572</b>	<b>1,016</b>
<b>Sussex County (Private)</b>											
Atlantic Shores	30	26	44	33	43	52	31	45	148	156	304
Cadia Rehab Renaissance	8	3	24	34	49	79	34	62	115	178	293
Country Rest Home	0	0	3	1	11	10	8	20	22	31	53
Delmar Nursing & Rehab	0	2	3	2	6	12	9	7	18	23	41
Harbor Health Care	4	1	11	16	18	29	17	27	50	73	123
Harrison Senior Living	3	13	31	25	49	60	23	43	106	141	247
Lofland Park Center	13	17	16	32	37	30	24	29	90	108	198
Milford Center	39	23	25	37	43	40	20	28	127	128	255
Polaris Healthcare	7	5	2	11	7	14	3	17	19	47	66
Seaford Center	18	12	22	34	23	21	5	13	68	80	148
The Moorings at Lewes	0	0	6	2	14	25	14	35	34	62	96
WBC Manor House	0	0	1	3	4	5	13	37	18	45	63
<b>Sussex County (Private) Total</b>	<b>122</b>	<b>102</b>	<b>188</b>	<b>230</b>	<b>304</b>	<b>377</b>	<b>201</b>	<b>363</b>	<b>815</b>	<b>1,072</b>	<b>1,887</b>
<b>Total Private Facilities</b>	<b>419</b>	<b>359</b>	<b>600</b>	<b>753</b>	<b>845</b>	<b>1,150</b>	<b>729</b>	<b>1,374</b>	<b>2,593</b>	<b>3,636</b>	<b>6,229</b>
<b>Public Facilities</b>											
DE Hosp for Chronically Ill	4	3	2	3	1	3	0	1	7	10	17
Governor Bacon Health Center	0	0	0	0	0	0	0	0	0	0	0
<b>Public Total</b>	<b>4</b>	<b>3</b>	<b>2</b>	<b>3</b>	<b>1</b>	<b>3</b>	<b>0</b>	<b>1</b>	<b>7</b>	<b>10</b>	<b>17</b>
<b>Total All Facilities</b>	<b>423</b>	<b>362</b>	<b>602</b>	<b>756</b>	<b>846</b>	<b>1,153</b>	<b>729</b>	<b>1,375</b>	<b>2,600</b>	<b>3,646</b>	<b>6,246</b>

Notes: NCC=New Castle County.



**Table 16**  
**Number of Black Admissions by Age, Gender, County and Facility, 2020**

Nursing Home	<65 Male	< 65 Female	65-74 Male	65-74 Female	75-84 Male	75-84 Female	85+ Male	85+ Female	Total Male	Total Female	Total M+F
<b>NCC (Private)</b>											
Brackenville Center	4	4	4	6	3	10	0	5	11	25	36
Brandywine Nursing & Rehab	1	0	9	8	11	11	9	5	30	24	54
Cadia Rehab Broadmeadow	4	6	7	8	11	13	7	8	29	35	64
Cadia Rehab Pike Creek	51	31	13	25	10	9	3	13	77	78	155
Cadia Rehab Silverside	8	7	17	20	13	18	3	11	41	56	97
Churchman Village	0	3	2	5	3	5	1	2	6	15	21
Forwood Manor	0	0	0	2	6	4	4	2	10	8	18
Foulk Manor North	0	0	0	0	1	0	0	1	1	1	2
Foulk Manor South	0	0	0	0	0	0	0	0	0	0	0
Gilpin Hall	0	1	0	1	0	3	2	3	2	8	10
Hillside Center	23	23	26	22	20	17	12	14	81	76	157
Jeanne Jugan Residence	0	0	0	0	0	0	0	0	0	0	0
Kentmere Rehab & Healthcare	3	2	6	7	9	9	10	24	28	42	70
Kutz Rehab & Nursing	1	0	0	0	0	1	1	1	2	2	4
ManorCare Pike Creek	22	27	18	22	22	21	14	14	76	84	160
ManorCare Wilmington	20	18	7	27	7	7	1	6	35	58	93
Millcroft	1	0	1	0	2	3	0	6	4	9	13
New Castle Health & Rehab	17	9	10	17	6	10	2	7	35	43	78
Newark Manor	0	0	0	1	0	1	0	0	0	2	2
Parkview Nursing & Rehab	10	1	6	10	5	8	6	5	27	24	51
Regal Heights Healthcare & Rehab	5	4	12	2	4	4	4	0	25	10	35
Regency Healthcare & Rehab	1	7	7	9	1	15	3	8	12	39	51
Shipleigh Manor Health Care	0	0	0	0	1	0	1	0	2	0	2
Stonegates	0	0	0	0	0	0	0	0	0	0	0
Weston Senior Living Center	0	0	0	0	6	3	0	0	6	3	9
WBC Cokesbury Village	0	0	0	0	0	0	0	1	0	1	1
WBC Country House	0	0	0	0	0	0	0	0	0	0	0
<b>NCC (Private) Total</b>	<b>171</b>	<b>143</b>	<b>145</b>	<b>192</b>	<b>141</b>	<b>172</b>	<b>83</b>	<b>136</b>	<b>540</b>	<b>643</b>	<b>1,183</b>

**Table 16  
(Continued)**

**Number of Black Admissions by Age, Gender, County and Facility, 2020**

<b>Nursing Home</b>	<b>&lt;65 Male</b>	<b>&lt; 65 Female</b>	<b>65-74 Male</b>	<b>65-74 Female</b>	<b>75-84 Male</b>	<b>75-84 Female</b>	<b>85+ Male</b>	<b>85+ Female</b>	<b>Total Male</b>	<b>Total Female</b>	<b>Total M+F</b>
<b>Kent County (Private)</b>											
Cadia Rehab Capitol	3	1	9	0	3	4	3	4	18	9	27
Courtland Manor	0	0	1	0	0	0	1	3	2	3	5
Delaware Veterans Home	0	0	0	0	1	0	0	0	1	0	1
Pinnacle Rehab & Health	7	6	27	10	16	11	1	2	51	29	80
Silver Lake Center	15	10	11	6	10	12	6	10	42	38	80
The Center at Eden Hill	7	10	8	19	11	30	6	9	32	68	100
Westminster Village	1	3	4	2	6	6	1	3	12	14	26
<b>Kent County (Private) Total</b>	<b>33</b>	<b>30</b>	<b>60</b>	<b>37</b>	<b>47</b>	<b>63</b>	<b>18</b>	<b>31</b>	<b>158</b>	<b>161</b>	<b>319</b>
<b>Sussex County (Private)</b>											
Atlantic Shores	3	2	11	7	4	2	4	8	22	19	41
Cadia Rehab Renaissance	1	1	0	3	6	7	0	3	7	14	21
Country Rest Home	0	0	0	0	1	0	0	0	1	0	1
Delmar Nursing & Rehab	1	0	1	4	3	1	2	2	7	7	14
Harbor Health Care	2	0	4	1	1	3	1	0	8	4	12
Harrison Senior Living	1	1	2	1	3	11	1	8	7	21	28
Lofland Park Center	4	8	6	7	2	7	3	2	15	24	39
Milford Center	14	20	4	3	6	11	1	2	25	36	61
Polaris Healthcare	1	0	3	1	0	0	0	0	4	1	5
Seaford Center	11	5	4	5	6	3	0	2	21	15	36
The Moorings at Lewes	0	0	0	0	1	0	0	1	1	1	2
WBC Manor House	0	0	0	0	0	0	0	0	0	0	0
<b>Sussex County (Private) Total</b>	<b>38</b>	<b>37</b>	<b>35</b>	<b>32</b>	<b>33</b>	<b>45</b>	<b>12</b>	<b>28</b>	<b>118</b>	<b>142</b>	<b>260</b>
<b>Total Private Facilities</b>	<b>242</b>	<b>210</b>	<b>240</b>	<b>261</b>	<b>221</b>	<b>280</b>	<b>113</b>	<b>195</b>	<b>816</b>	<b>946</b>	<b>1,762</b>
<b>Public Facilities</b>											
DE Hosp for Chronically Ill	0	3	3	2	1	2	1	3	5	10	15
Governor Bacon Health Center	0	0	0	0	0	0	0	0	0	0	0
<b>Public Total</b>	<b>0</b>	<b>3</b>	<b>3</b>	<b>2</b>	<b>1</b>	<b>2</b>	<b>1</b>	<b>3</b>	<b>5</b>	<b>10</b>	<b>15</b>
<b>Total All Facilities</b>	<b>242</b>	<b>213</b>	<b>243</b>	<b>263</b>	<b>222</b>	<b>282</b>	<b>114</b>	<b>198</b>	<b>821</b>	<b>956</b>	<b>1,777</b>

Notes: NCC=New Castle County.

**Table 17**  
**Number of Admissions by Source of Referral, 2020**

<b>Nursing Home</b>	<b>Own or Relative's Home</b>	<b>Hospital</b>	<b>Assisted Living</b>	<b>Private LTCF</b>	<b>State Owned LTCF</b>	<b>Other</b>	<b>Total</b>
<b>NCC (Private)</b>							
Brackenville Center	25	201	2	10	0	11	249
Brandywine Nursing & Rehab	12	132	17	0	13	0	174
Cadia Rehab Broadmeadow	1	306	1	21	0	2	331
Cadia Rehab Pike Creek	6	517	0	0	0	2	525
Cadia Rehab Silverside	6	393	1	2	0	0	402
Churchman Village	14	151	0	0	0	0	165
Forwood Manor	6	182	2	0	0	0	190
Foulk Manor North	13	8	6	4	0	1	32
Foulk Manor South	1	5	5	2	0	0	13
Gilpin Hall	12	4	7	1	0	0	24
Hillside Center	17	279	1	0	0	0	297
Jeanne Jugan Residence	6	0	0	2	0	3	11
Kentmere Rehab & Healthcare	4	223	2	0	0	3	232
Kutz Rehab & Nursing	7	54	4	8	0	2	75
ManorCare Pike Creek	18	656	0	4	0	1	679
ManorCare Wilmington	4	310	0	0	0	0	314
Millcroft	0	86	2	1	0	2	91
New Castle Health & Rehab	19	154	0	0	2	0	175
Newark Manor	11	8	5	0	0	2	26
Parkview Nursing & Rehab	23	110	6	2	0	0	141
Regal Heights Healthcare &	32	101	1	0	1	1	136
Regency Healthcare & Rehab	9	83	0	0	0	0	92
Shipley Manor Health Care	1	89	3	1	0	0	94
Stonegates	22	21	0	1	0	0	44
Weston Senior Living Center	0	27	0	0	0	0	27
WBC Cokesbury Village	15	33	7	0	0	0	55
WBC Country House	4	39	0	3	0	25	71
<b>NCC (Private) Total</b>	<b>288</b>	<b>4,172</b>	<b>72</b>	<b>62</b>	<b>16</b>	<b>55</b>	<b>4,665</b>

**Table 17**  
**(Continued)**  
**Number of Admissions by Source of Referral, 2020**

Nursing Home	Own or Relative's Home	Hospital	Assisted Living	Private LTCF	State Owned LTCF	Other	Total
<b>Kent County (Private)</b>							
Cadia Rehab Capitol	10	127	2	16	2	0	157
Courtland Manor	11	1	0	4	0	0	16
Delaware Veterans Home	6	3	1	2	0	0	12
Pinnacle Rehab & Health	2	278	0	1	0	0	281
Silver Lake Center	0	253	1	6	0	0	260
The Center at Eden Hill	16	461	0	0	0	8	485
Westminster Village	25	70	26	1	0	24	146
<b>Kent County (Private) Total</b>	<b>70</b>	<b>1,193</b>	<b>30</b>	<b>30</b>	<b>2</b>	<b>32</b>	<b>1,357</b>
<b>Sussex County (Private)</b>							
Atlantic Shores	8	332	0	9	1	0	350
Cadia Rehab Renaissance	12	295	0	11	1	1	320
Country Rest Home	24	10	2	2	8	8	54
Delmar Nursing & Rehab	12	43	1	0	0	1	57
Harbor Health Care	2	128	0	4	0	2	136
Harrison Senior Living	15	254	0	0	2	5	276
Lofland Park Center	21	206	0	12	2	0	241
Milford Center	10	313	0	10	0	0	333
Polaris Healthcare	0	65	0	6	0	0	71
Seaford Center	5	159	0	20	0	0	184
The Moorings at Lewes	1	93	0	2	0	2	98
WBC Manor House	7	36	16	4	0	0	63
<b>Sussex County (Private) Total</b>	<b>117</b>	<b>1,934</b>	<b>19</b>	<b>80</b>	<b>14</b>	<b>19</b>	<b>2,183</b>
<b>Total Private Facilities</b>							
	<b>475</b>	<b>7,299</b>	<b>121</b>	<b>172</b>	<b>32</b>	<b>106</b>	<b>8,205</b>
<b>Public Facilities</b>							
DE Hosp for Chronically Ill	1	2	0	0	30	0	33
Governor Bacon Health Center	0	0	0	0	0	0	0
<b>Public Total</b>	<b>1</b>	<b>2</b>	<b>0</b>	<b>0</b>	<b>30</b>	<b>0</b>	<b>33</b>
<b>Total All Facilities</b>							
	<b>476</b>	<b>7,301</b>	<b>121</b>	<b>172</b>	<b>62</b>	<b>106</b>	<b>8,238</b>

Note: NCC=New Castle County.

**Table 18**  
**Percentage of Admissions by Source of Referral, County and Facility, 2020**

Nursing Home	Own or Relative's Home	Hospital	Assisted Living	Private LTCF	State Owned LTCF	Other	Total
<b>NCC (Private)</b>							
Brackenville Center	10.0%	80.7%	0.8%	4.0%	0.0%	4.4%	100.0%
Brandywine Nursing & Rehab	6.9%	75.9%	9.8%	0.0%	7.5%	0.0%	100.0%
Cadia Rehab Broadmeadow	0.3%	92.4%	0.3%	6.3%	0.0%	0.6%	100.0%
Cadia Rehab Pike Creek	1.1%	98.5%	0.0%	0.0%	0.0%	0.4%	100.0%
Cadia Rehab Silverside	1.5%	97.8%	0.2%	0.5%	0.0%	0.0%	100.0%
Churchman Village	8.5%	91.5%	0.0%	0.0%	0.0%	0.0%	100.0%
Forwood Manor	3.2%	95.8%	1.1%	0.0%	0.0%	0.0%	100.0%
Foulk Manor North	40.6%	25.0%	18.8%	12.5%	0.0%	3.1%	100.0%
Foulk Manor South	7.7%	38.5%	38.5%	15.4%	0.0%	0.0%	100.0%
Gilpin Hall	50.0%	16.7%	29.2%	4.2%	0.0%	0.0%	100.0%
Hillside Center	5.7%	93.9%	0.3%	0.0%	0.0%	0.0%	100.0%
Jeanne Jugan Residence	54.5%	0.0%	0.0%	18.2%	0.0%	27.3%	100.0%
Kentmere Rehab & Healthcare	1.7%	96.1%	0.9%	0.0%	0.0%	1.3%	100.0%
Kutz Rehab & Nursing	9.3%	72.0%	5.3%	10.7%	0.0%	2.7%	100.0%
ManorCare Pike Creek	2.7%	96.6%	0.0%	0.6%	0.0%	0.1%	100.0%
ManorCare Wilmington	1.3%	98.7%	0.0%	0.0%	0.0%	0.0%	100.0%
Millcroft	0.0%	94.5%	2.2%	1.1%	0.0%	2.2%	100.0%
New Castle Health & Rehab	10.9%	88.0%	0.0%	0.0%	1.1%	0.0%	100.0%
Newark Manor	42.3%	30.8%	19.2%	0.0%	0.0%	7.7%	100.0%
Parkview Nursing & Rehab	16.3%	78.0%	4.3%	1.4%	0.0%	0.0%	100.0%
Regal Heights Healthcare & Rehab	23.5%	74.3%	0.7%	0.0%	0.7%	0.7%	100.0%
Regency Healthcare & Rehab	9.8%	90.2%	0.0%	0.0%	0.0%	0.0%	100.0%
Shipley Manor Health Care	1.1%	94.7%	3.2%	1.1%	0.0%	0.0%	100.0%
Stonegates	50.0%	47.7%	0.0%	2.3%	0.0%	0.0%	100.0%
Weston Senior Living Center	0.0%	100.0%	0.0%	0.0%	0.0%	0.0%	100.0%
WBC Cokesbury Village	27.3%	60.0%	12.7%	0.0%	0.0%	0.0%	100.0%
WBC Country House	5.6%	54.9%	0.0%	4.2%	0.0%	35.2%	100.0%
<b>NCC (Private) Total</b>	<b>6.2%</b>	<b>89.4%</b>	<b>1.5%</b>	<b>1.3%</b>	<b>0.3%</b>	<b>1.2%</b>	<b>100.0%</b>

**Table 18  
(Continued)**

**Percentage of Admissions by Source of Referral, County and Facility, 2020**

<b>Nursing Home</b>	<b>Own or Relative's Home</b>	<b>Hospital</b>	<b>Assisted Living</b>	<b>Private LTCF</b>	<b>State Owned LTCF</b>	<b>Other</b>	<b>Total</b>
<b>Kent County (Private)</b>							
Cadia Rehab Capitol	6.4%	80.9%	1.3%	10.2%	1.3%	0.0%	100.0%
Courtland Manor	68.8%	6.3%	0.0%	25.0%	0.0%	0.0%	100.0%
Delaware Veterans Home	50.0%	25.0%	8.3%	16.7%	0.0%	0.0%	100.0%
Pinnacle Rehab & Health	0.7%	98.9%	0.0%	0.4%	0.0%	0.0%	100.0%
Silver Lake Center	0.0%	97.3%	0.4%	2.3%	0.0%	0.0%	100.0%
The Center at Eden Hill	3.3%	95.1%	0.0%	0.0%	0.0%	1.6%	100.0%
Westminster Village	17.1%	47.9%	17.8%	0.7%	0.0%	16.4%	100.0%
<b>Kent County (Private) Total</b>	<b>5.2%</b>	<b>87.9%</b>	<b>2.2%</b>	<b>2.2%</b>	<b>0.1%</b>	<b>2.4%</b>	<b>100.0%</b>
<b>Sussex County (Private)</b>							
Atlantic Shores	2.3%	94.9%	0.0%	2.6%	0.3%	0.0%	100.0%
Cadia Rehab Renaissance	3.8%	92.2%	0.0%	3.4%	0.3%	0.3%	100.0%
Country Rest Home	44.4%	18.5%	3.7%	3.7%	14.8%	14.8%	100.0%
Delmar Nursing & Rehab	21.1%	75.4%	1.8%	0.0%	0.0%	1.8%	100.0%
Harbor Health Care	1.5%	94.1%	0.0%	2.9%	0.0%	1.5%	100.0%
Harrison Senior Living	5.4%	92.0%	0.0%	0.0%	0.7%	1.8%	100.0%
Lofland Park Center	8.7%	85.5%	0.0%	5.0%	0.8%	0.0%	100.0%
Milford Center	3.0%	94.0%	0.0%	3.0%	0.0%	0.0%	100.0%
Polaris Healthcare	0.0%	91.5%	0.0%	8.5%	0.0%	0.0%	100.0%
Seaford Center	2.7%	86.4%	0.0%	10.9%	0.0%	0.0%	100.0%
The Moorings at Lewes	1.0%	94.9%	0.0%	2.0%	0.0%	2.0%	100.0%
WBC Manor House	11.1%	57.1%	25.4%	6.3%	0.0%	0.0%	100.0%
<b>Sussex County (Private) Total</b>	<b>5.4%</b>	<b>88.6%</b>	<b>0.9%</b>	<b>3.7%</b>	<b>0.6%</b>	<b>0.9%</b>	<b>100.0%</b>
<b>Total Private Facilities</b>	<b>5.8%</b>	<b>89.0%</b>	<b>1.5%</b>	<b>2.1%</b>	<b>0.4%</b>	<b>1.3%</b>	<b>100.0%</b>
<b>Public Facilities</b>							
DE Hosp for Chronically Ill	3.0%	6.1%	0.0%	0.0%	90.9%	0.0%	100.0%
Governor Bacon Health Center	N/A	N/A	N/A	N/A	N/A	N/A	N/A
<b>Public Total</b>	<b>3.0%</b>	<b>6.1%</b>	<b>0.0%</b>	<b>0.0%</b>	<b>90.9%</b>	<b>0.0%</b>	<b>100.0%</b>
<b>Total All Facilities</b>	<b>5.8%</b>	<b>88.6%</b>	<b>1.5%</b>	<b>2.1%</b>	<b>0.8%</b>	<b>1.3%</b>	<b>100.0%</b>

Note: NCC=New Castle County.

**Table 19**  
**Number of Admissions by County and State of Residence, 2020**

<b>Nursing Home</b>	<b>NCC</b>	<b>Kent</b>	<b>Sussex</b>	<b>MD</b>	<b>NJ</b>	<b>PA</b>	<b>Other</b>	<b>Total</b>
<b>NCC (Private)</b>								
Brackenville Center	205	8	7	6	2	18	3	249
Brandywine Nursing & Rehab	172	0	1	1	0	0	0	174
Cadia Rehab Broadmeadow	291	20	6	9	0	5	0	331
Cadia Rehab Pike Creek	499	6	2	5	1	12	0	525
Cadia Rehab Silverside	381	3	5	1	1	11	0	402
Churchman Village	156	0	1	4	0	4	0	165
Forwood Manor	190	0	0	0	0	0	0	190
Foulk Manor North	24	0	0	0	0	7	1	32
Foulk Manor South	13	0	0	0	0	0	0	13
Gilpin Hall	23	1	0	0	0	0	0	24
Hillside Center	280	0	2	3	0	12	0	297
Jeanne Jugan Residence	11	0	0	0	0	0	0	11
Kentmere Rehab & Healthcare	224	1	0	0	0	7	0	232
Kutz Rehab & Nursing	75	0	0	0	0	0	0	75
ManorCare Pike Creek	664	2	0	1	0	12	0	679
ManorCare Wilmington	295	4	2	1	2	4	6	314
Millcroft	91	0	0	0	0	0	0	91
New Castle Health & Rehab	174	0	0	0	0	1	0	175
Newark Manor	24	0	0	0	0	2	0	26
Parkview Nursing & Rehab	134	3	1	0	0	3	0	141
Regal Heights Healthcare & Rehab	131	0	2	0	0	1	2	136
Regency Healthcare & Rehab	91	1	0	0	0	0	0	92
Shipleigh Manor Health Care	94	0	0	0	0	0	0	94
Stonegates	44	0	0	0	0	0	0	44
Weston Senior Living Center	27	0	0	0	0	0	0	27
WBC Cokesbury Village	54	0	0	0	0	1	0	55
WBC Country House	70	0	0	1	0	0	0	71
<b>NCC (Private) Total</b>	<b>4,437</b>	<b>49</b>	<b>29</b>	<b>32</b>	<b>6</b>	<b>100</b>	<b>12</b>	<b>4,665</b>

**Table 19**  
**(Continued)**  
**Number of Admissions by County and State of Residence, 2020**

<b>Nursing Home</b>	<b>NCC</b>	<b>Kent</b>	<b>Sussex</b>	<b>MD</b>	<b>NJ</b>	<b>PA</b>	<b>Other</b>	<b>Total</b>
<b>Kent County (Private)</b>								
Cadia Rehab Capitol	2	152	3	0	0	0	0	157
Courtland Manor	1	13	2	0	0	0	0	16
Delaware Veterans Home	0	4	7	1	0	0	0	12
Pinnacle Rehab & Health	35	227	8	0	0	11	0	281
Silver Lake Center	6	236	16	2	0	0	0	260
The Center at Eden Hill	7	412	48	12	0	2	4	485
Westminster Village	6	137	2	1	0	0	0	146
<b>Kent County (Private) Total</b>	<b>57</b>	<b>1,181</b>	<b>86</b>	<b>16</b>	<b>0</b>	<b>13</b>	<b>4</b>	<b>1,357</b>
<b>Sussex County (Private)</b>								
Atlantic Shores	28	35	205	72	0	7	3	350
Cadia Rehab Renaissance	16	5	287	12	0	0	0	320
Country Rest Home	4	12	34	3	0	0	1	54
Delmar Nursing & Rehab	0	1	29	27	0	0	0	57
Harbor Health Care	9	9	111	3	0	3	1	136
Harrison Senior Living	2	22	238	12	0	2	0	276
Lofland Park Center	1	21	211	5	1	0	2	241
Milford Center	27	95	188	7	0	16	0	333
Polaris Healthcare	1	14	55	0	0	1	0	71
Seaford Center	3	24	129	23	0	5	0	184
The Moorings at Lewes	0	1	91	4	0	1	1	98
WBC Manor House	0	0	60	2	0	1	0	63
<b>Sussex County (Private) Total</b>	<b>91</b>	<b>239</b>	<b>1,638</b>	<b>170</b>	<b>1</b>	<b>36</b>	<b>8</b>	<b>2,183</b>
<b>Total Private Facilities</b>	<b>4,585</b>	<b>1,469</b>	<b>1,753</b>	<b>218</b>	<b>7</b>	<b>149</b>	<b>24</b>	<b>8,205</b>
<b>Public Facilities</b>								
DE Hosp for Chronically Ill	30	2	1	0	0	0	0	33
Governor Bacon Health Center	0	0	0	0	0	0	0	0
<b>Public Total</b>	<b>30</b>	<b>2</b>	<b>1</b>	<b>0</b>	<b>0</b>	<b>0</b>	<b>0</b>	<b>33</b>
<b>Total All Facilities</b>	<b>4,615</b>	<b>1,471</b>	<b>1,754</b>	<b>218</b>	<b>7</b>	<b>149</b>	<b>24</b>	<b>8,238</b>

Note: NCC=New Castle County.



**Table 20**  
**Percentage of Admissions by County and State of Residence, 2020**

<b>Nursing Home</b>	<b>NCC</b>	<b>Kent</b>	<b>Sussex</b>	<b>MD</b>	<b>NJ</b>	<b>PA</b>	<b>Other</b>	<b>Total</b>
<b>NCC (Private)</b>								
Brackenville Center	82.3%	3.2%	2.8%	2.4%	0.8%	7.2%	1.2%	100.0%
Brandywine Nursing & Rehab	98.9%	0.0%	0.6%	0.6%	0.0%	0.0%	0.0%	100.0%
Cadia Rehab Broadmeadow	87.9%	6.0%	1.8%	2.7%	0.0%	1.5%	0.0%	100.0%
Cadia Rehab Pike Creek	95.0%	1.1%	0.4%	1.0%	0.2%	2.3%	0.0%	100.0%
Cadia Rehab Silverside	94.8%	0.7%	1.2%	0.2%	0.2%	2.7%	0.0%	100.0%
Churchman Village	94.5%	0.0%	0.6%	2.4%	0.0%	2.4%	0.0%	100.0%
Forwood Manor	100.0%	0.0%	0.0%	0.0%	0.0%	0.0%	0.0%	100.0%
Foulk Manor North	75.0%	0.0%	0.0%	0.0%	0.0%	21.9	3.1%	100.0%
Foulk Manor South	100.0%	0.0%	0.0%	0.0%	0.0%	0.0%	0.0%	100.0%
Gilpin Hall	95.8%	4.2%	0.0%	0.0%	0.0%	0.0%	0.0%	100.0%
Hillside Center	94.3%	0.0%	0.7%	1.0%	0.0%	4.0%	0.0%	100.0%
Jeanne Jugan Residence	100.0%	0.0%	0.0%	0.0%	0.0%	0.0%	0.0%	100.0%
Kentmere Rehab & Healthcare	96.6%	0.4%	0.0%	0.0%	0.0%	3.0%	0.0%	100.0%
Kutz Rehab & Nursing	100.0%	0.0%	0.0%	0.0%	0.0%	0.0%	0.0%	100.0%
ManorCare Pike Creek	97.8%	0.3%	0.0%	0.1%	0.0%	1.8%	0.0%	100.0%
ManorCare Wilmington	93.9%	1.3%	0.6%	0.3%	0.6%	1.3%	1.9%	100.0%
Millcroft	100.0%	0.0%	0.0%	0.0%	0.0%	0.0%	0.0%	100.0%
New Castle Health & Rehab	99.4%	0.0%	0.0%	0.0%	0.0%	0.6%	0.0%	100.0%
Newark Manor	92.3%	0.0%	0.0%	0.0%	0.0%	7.7%	0.0%	100.0%
Parkview Nursing & Rehab	95.0%	2.1%	0.7%	0.0%	0.0%	2.1%	0.0%	100.0%
Regal Heights Healthcare & Rehab	96.3%	0.0%	1.5%	0.0%	0.0%	0.7%	1.5%	100.0%
Regency Healthcare & Rehab	98.9%	1.1%	0.0%	0.0%	0.0%	0.0%	0.0%	100.0%
Shipley Manor Health Care	100.0%	0.0%	0.0%	0.0%	0.0%	0.0%	0.0%	100.0%
Stonegates	100.0%	0.0%	0.0%	0.0%	0.0%	0.0%	0.0%	100.0%
Weston Senior Living Center	100.0%	0.0%	0.0%	0.0%	0.0%	0.0%	0.0%	100.0%
WBC Cokesbury Village	98.2%	0.0%	0.0%	0.0%	0.0%	1.8%	0.0%	100.0%
WBC Country House	98.6%	0.0%	0.0%	1.4%	0.0%	0.0%	0.0%	100.0%
<b>NCC (Private) Total</b>	<b>95.1%</b>	<b>1.1%</b>	<b>0.6%</b>	<b>0.7%</b>	<b>0.1%</b>	<b>2.1%</b>	<b>0.3%</b>	<b>100.0%</b>

**Table 20  
(Continued)**

**Percentage of Admissions by County and State of Residence, 2020**

<b>Nursing Home</b>	<b>NCC</b>	<b>Kent</b>	<b>Sussex</b>	<b>MD</b>	<b>NJ</b>	<b>PA</b>	<b>Other</b>	<b>Total</b>
<b>Kent County (Private)</b>								
Cadia Rehab Capitol	1.3%	96.8%	1.9%	0.0%	0.0%	0.0%	0.0%	100.0%
Courtland Manor	6.3%	81.3%	12.5%	0.0%	0.0%	0.0%	0.0%	100.0%
Delaware Veterans Home	0.0%	33.3%	58.3%	8.3%	0.0%	0.0%	0.0%	100.0%
Pinnacle Rehab & Health	12.5%	80.8%	2.8%	0.0%	0.0%	3.9%	0.0%	100.0%
Silver Lake Center	2.3%	90.8%	6.2%	0.8%	0.0%	0.0%	0.0%	100.0%
The Center at Eden Hill	1.4%	84.9%	9.9%	2.5%	0.0%	0.4%	0.8%	100.0%
Westminster Village	4.1%	93.8%	1.4%	0.7%	0.0%	0.0%	0.0%	100.0%
<b>Kent County (Private) Total</b>	<b>4.2%</b>	<b>87.0%</b>	<b>6.3%</b>	<b>1.2%</b>	<b>0.0%</b>	<b>1.0%</b>	<b>0.3%</b>	<b>100.0%</b>
<b>Sussex County (Private)</b>								
Atlantic Shores	8.0%	10.0%	58.6%	20.6%	0.0%	2.0%	0.9%	100.0%
Cadia Rehab Renaissance	5.0%	1.6%	89.7%	3.8%	0.0%	0.0%	0.0%	100.0%
Country Rest Home	7.4%	22.2%	63.0%	5.6%	0.0%	0.0%	1.9%	100.0%
Delmar Nursing & Rehab	0.0%	1.8%	50.9%	47.4%	0.0%	0.0%	0.0%	100.0%
Harbor Health Care	6.6%	6.6%	81.6%	2.2%	0.0%	2.2%	0.7%	100.0%
Harrison Senior Living	0.7%	8.0%	86.2%	4.3%	0.0%	0.7%	0.0%	100.0%
Lofland Park Center	0.4%	8.7%	87.6%	2.1%	0.4%	0.0%	0.8%	100.0%
Milford Center	8.1%	28.5%	56.5%	2.1%	0.0%	4.8%	0.0%	100.0%
Polaris Healthcare	1.4%	19.7%	77.5%	0.0%	0.0%	1.4%	0.0%	100.0%
Seaford Center	1.6%	13.0%	70.1%	12.5%	0.0%	2.7%	0.0%	100.0%
The Moorings at Lewes	0.0%	1.0%	92.9%	4.1%	0.0%	1.0%	1.0%	100.0%
WBC Manor House	0.0%	0.0%	95.2%	3.2%	0.0%	1.6%	0.0%	100.0%
<b>Sussex County (Private) Total</b>	<b>4.2%</b>	<b>10.9%</b>	<b>75.0%</b>	<b>7.8%</b>	<b>0.0%</b>	<b>1.6%</b>	<b>0.4%</b>	<b>100.0%</b>
<b>Total Private Facilities</b>	<b>55.9%</b>	<b>17.9%</b>	<b>21.4%</b>	<b>2.7%</b>	<b>0.1%</b>	<b>1.8%</b>	<b>0.3%</b>	<b>100.0%</b>
<b>Public Facilities</b>								
DE Hosp for Chronically Ill	90.9%	6.1%	3.0%	0.0%	0.0%	0.0%	0.0%	100.0%
Governor Bacon Health Center	N/A	N/A	N/A	N/A	N/A	N/A	N/A	N/A
<b>Public Total</b>	<b>90.9%</b>	<b>6.1%</b>	<b>3.0%</b>	<b>0.0%</b>	<b>0.0%</b>	<b>0.0%</b>	<b>0.0%</b>	<b>100.0%</b>
<b>Total All Facilities</b>	<b>56.0%</b>	<b>17.9%</b>	<b>21.3%</b>	<b>2.6%</b>	<b>0.1%</b>	<b>1.8%</b>	<b>0.3%</b>	<b>100.0%</b>

Note: NCC=New Castle County.

**Table 21**  
**Number of Discharges by Age, Gender, County and Facility, 2020**

Nursing Home	<65 Male	< 65 Female	65-74 Male	65-74 Female	75-84 Male	75-84 Female	85+ Male	85+ Female	Total Male	Total Female	Total M+F
<b>NCC (Private)</b>											
Brackenville Center	9	9	11	37	30	53	29	72	79	171	250
Brandywine Nursing & Rehab	6	4	45	25	34	33	52	77	137	139	276
Cadia Rehab Broadmeadow	14	19	26	42	42	70	46	76	128	207	335
Cadia Rehab Pike Creek	99	94	46	76	60	65	31	74	236	309	545
Cadia Rehab Silverside	32	20	57	51	56	66	31	79	176	216	392
Churchman Village	19	3	8	26	38	34	26	52	91	115	206
Forwood Manor	0	0	6	12	25	39	38	80	69	131	200
Foulk Manor North	0	0	1	1	2	6	5	18	8	25	33
Foulk Manor South	0	0	1	2	0	5	12	16	13	23	36
Gilpin Hall	0	4	1	2	1	1	7	21	9	28	37
Hillside Center	51	38	52	37	39	30	28	27	170	132	302
Jeanne Jugan Residence	0	0	0	2	1	4	2	14	3	20	23
Kentmere Rehab & Healthcare	4	3	13	14	33	38	23	87	73	142	215
Kutz Rehab & Nursing	1	1	5	8	8	18	12	30	26	57	83
ManorCare Pike Creek	69	61	89	108	93	114	93	104	344	387	731
ManorCare Wilmington	44	38	60	65	39	61	46	52	189	216	405
Millcroft	3	0	2	4	14	17	22	47	41	68	109
New Castle Health & Rehab	7	13	11	12	8	6	3	4	29	35	64
Newark Manor	0	0	0	0	0	2	2	11	2	13	15
Parkview Nursing & Rehab	16	12	22	23	28	32	12	35	78	102	180
Regal Heights Healthcare &	4	2	14	14	26	27	20	33	64	76	140
Regency Healthcare & Rehab	12	3	10	23	4	12	6	12	32	50	82
Shipley Manor Health Care	0	0	3	2	18	19	23	52	44	73	117
Stonegates	0	0	1	0	2	10	10	19	13	29	42
Weston Senior Living Center	3	3	0	0	6	0	6	3	15	6	21
WBC Cokesbury Village	0	0	0	0	3	7	17	35	20	42	62
WBC Country House	0	0	0	0	6	20	15	40	21	60	81
<b>NCC (Private) Total</b>	<b>393</b>	<b>327</b>	<b>484</b>	<b>586</b>	<b>616</b>	<b>789</b>	<b>617</b>	<b>1,170</b>	<b>2,110</b>	<b>2,872</b>	<b>4,982</b>

**Table 21**  
**(Continued)**  
**Number of Discharges by Age, Gender, County and Facility, 2020**

Nursing Home	<65 Male	< 65 Female	65-74 Male	65-74 Female	75-84 Male	75-84 Female	85+ Male	85+ Female	Total Male	Total Female	Total M+F
<b>Kent County (Private)</b>											
Cadia Rehab Capitol	14	9	21	17	19	30	18	43	72	99	171
Courtland Manor	0	1	1	0	0	2	4	14	5	17	22
Delaware Veterans Home	3	0	3	0	7	0	10	4	23	4	27
Pinnacle Rehab & Health	28	22	44	39	48	38	13	17	133	116	249
Silver Lake Center	36	27	27	23	35	28	18	34	116	112	228
The Center at Eden Hill	16	29	42	82	80	104	63	97	201	312	513
Westminster Village	2	5	15	16	19	20	24	41	60	82	142
<b>Kent County (Private) Total</b>	<b>99</b>	<b>93</b>	<b>153</b>	<b>177</b>	<b>208</b>	<b>222</b>	<b>150</b>	<b>250</b>	<b>610</b>	<b>742</b>	<b>1,352</b>
<b>Sussex County (Private)</b>											
Atlantic Shores	35	30	45	44	44	51	42	62	166	187	353
Cadia Rehab Renaissance	7	7	19	36	56	86	46	96	128	225	353
Country Rest Home	0	1	2	1	11	11	7	25	20	38	58
Delmar Nursing & Rehab	2	1	7	6	9	21	10	15	28	43	71
Harbor Health Care	6	4	22	16	24	33	27	35	79	88	167
Harrison Senior Living	5	13	42	44	53	76	39	75	139	208	347
Lofland Park Center	11	22	19	31	32	35	18	36	80	124	204
Milford Center	42	44	44	42	40	61	28	40	154	187	341
Polaris Healthcare	6	4	4	8	7	9	2	16	19	37	56
Seaford Center	33	24	28	37	28	30	6	18	95	109	204
The Moorings at Lewes	0	0	9	4	16	25	13	47	38	76	114
WBC Manor House	0	0	1	4	3	9	21	57	25	70	95
<b>Sussex County (Private) Total</b>	<b>147</b>	<b>150</b>	<b>242</b>	<b>273</b>	<b>323</b>	<b>447</b>	<b>259</b>	<b>522</b>	<b>971</b>	<b>1,392</b>	<b>2,363</b>
<b>Total Private Facilities</b>	<b>639</b>	<b>570</b>	<b>879</b>	<b>1,036</b>	<b>1,147</b>	<b>1,458</b>	<b>1,026</b>	<b>1,942</b>	<b>3,691</b>	<b>5,006</b>	<b>8,697</b>
<b>Public Facilities</b>											
DE Hosp for Chronically Ill	3	5	7	2	8	4	1	5	19	16	35
Governor Bacon Health	1	7	2	7	0	5	0	4	3	23	26
<b>Public Total</b>	<b>4</b>	<b>12</b>	<b>9</b>	<b>9</b>	<b>8</b>	<b>9</b>	<b>1</b>	<b>9</b>	<b>22</b>	<b>39</b>	<b>61</b>
<b>Total All Facilities</b>	<b>643</b>	<b>582</b>	<b>888</b>	<b>1,045</b>	<b>1,155</b>	<b>1,467</b>	<b>1,027</b>	<b>1,951</b>	<b>3,713</b>	<b>5,045</b>	<b>8,758</b>

Note: NCC=New Castle County.

**Table 22**  
**Percentage of Discharges by Age, Facility Type, County and Facility, 2020**

<b>Nursing Home</b>	<b>Under 65</b>	<b>65-74</b>	<b>75-84</b>	<b>85+</b>	<b>Total</b>
<b>NCC (Private)</b>					
Brackenville Center	7.2%	19.2%	33.2%	40.4%	100.0%
Brandywine Nursing & Rehab	3.6%	25.4%	24.3%	46.7%	100.0%
Cadia Rehab Broadmeadow	9.9%	20.3%	33.4%	36.4%	100.0%
Cadia Rehab Pike Creek	35.4%	22.4%	22.9%	19.3%	100.0%
Cadia Rehab Silverside	13.3%	27.6%	31.1%	28.1%	100.0%
Churchman Village	10.7%	16.5%	35.0%	37.9%	100.0%
Forwood Manor	0.0%	9.0%	32.0%	59.0%	100.0%
Foulk Manor North	0.0%	6.1%	24.2%	69.7%	100.0%
Foulk Manor South	0.0%	8.3%	13.9%	77.8%	100.0%
Gilpin Hall	10.8%	8.1%	5.4%	75.7%	100.0%
Hillside Center	29.5%	29.5%	22.8%	18.2%	100.0%
Jeanne Jugan Residence	0.0%	8.7%	21.7%	69.6%	100.0%
Kentmere Rehab & Healthcare	3.3%	12.6%	33.0%	51.2%	100.0%
Kutz Rehab & Nursing	2.4%	15.7%	31.3%	50.6%	100.0%
ManorCare Pike Creek	17.8%	26.9%	28.3%	26.9%	100.0%
ManorCare Wilmington	20.2%	30.9%	24.7%	24.2%	100.0%
Millcroft	2.8%	5.5%	28.4%	63.3%	100.0%
New Castle Health & Rehab	31.3%	35.9%	21.9%	10.9%	100.0%
Newark Manor	0.0%	0.0%	13.3%	86.7%	100.0%
Parkview Nursing & Rehab	15.6%	25.0%	33.3%	26.1%	100.0%
Regal Heights Healthcare & Rehab	4.3%	20.0%	37.9%	37.9%	100.0%
Regency Healthcare & Rehab	18.3%	40.2%	19.5%	22.0%	100.0%
Shipley Manor Health Care	0.0%	4.3%	31.6%	64.1%	100.0%
Stonegates	0.0%	2.4%	28.6%	69.0%	100.0%
Weston Senior Living Center	28.6%	0.0%	28.6%	42.9%	100.0%
WBC Cokesbury Village	0.0%	0.0%	16.1%	83.9%	100.0%
WBC Country House	0.0%	0.0%	32.1%	67.9%	100.0%
<b>NCC (Private) Total</b>	<b>14.5%</b>	<b>21.5%</b>	<b>28.2%</b>	<b>35.9%</b>	<b>100.0%</b>

**Table 22**  
**(Continued)**  
**Percentage of Discharges by Age, Facility Type, County and Facility, 2020**

<b>Nursing Home</b>	<b>Under 65</b>	<b>65-74</b>	<b>75-84</b>	<b>85+</b>	<b>Total</b>
<b>Kent County (Private)</b>					
Cadia Rehab Capitol	13.5%	22.2%	28.7%	35.7%	100.0%
Courtland Manor	4.5%	4.5%	9.1%	81.8%	100.0%
Delaware Veterans Home	11.1%	11.1%	25.9%	51.9%	100.0%
Pinnacle Rehab & Health	20.1%	33.3%	34.5%	12.0%	100.0%
Silver Lake Center	27.6%	21.9%	27.6%	22.8%	100.0%
The Center at Eden Hill	8.8%	24.2%	35.9%	31.2%	100.0%
Westminster Village	4.9%	21.8%	27.5%	45.8%	100.0%
<b>Kent County (Private) Total</b>	<b>14.2%</b>	<b>24.4%</b>	<b>31.8%</b>	<b>29.6%</b>	<b>100.0%</b>
<b>Sussex County (Private)</b>					
Atlantic Shores	18.4%	25.2%	26.9%	29.5%	100.0%
Cadia Rehab Renaissance	4.0%	15.6%	40.2%	40.2%	100.0%
Country Rest Home	1.7%	5.2%	37.9%	55.2%	100.0%
Delmar Nursing & Rehab	4.2%	18.3%	42.3%	35.2%	100.0%
Harbor Health Care	6.0%	22.8%	34.1%	37.1%	100.0%
Harrison Senior Living	5.2%	24.8%	37.2%	32.9%	100.0%
Lofland Park Center	16.2%	24.5%	32.8%	26.5%	100.0%
Milford Center	25.2%	25.2%	29.6%	19.9%	100.0%
Polaris Healthcare	17.9%	21.4%	28.6%	32.1%	100.0%
Seaford Center	27.9%	31.9%	28.4%	11.8%	100.0%
The Moorings at Lewes	0.0%	11.4%	36.0%	52.6%	100.0%
WBC Manor House	0.0%	5.3%	12.6%	82.1%	100.0%
<b>Sussex County (Private) Total</b>	<b>12.6%</b>	<b>21.8%</b>	<b>32.6%</b>	<b>33.1%</b>	<b>100.0%</b>
<b>Total Private Facilities</b>	<b>13.9%</b>	<b>22.0%</b>	<b>30.0%</b>	<b>34.1%</b>	<b>100.0%</b>
<b>Public Facilities</b>					
DE Hosp for Chronically Ill	22.9%	25.7%	34.3%	17.1%	100.0%
Governor Bacon Health Center	30.8%	34.6%	19.2%	15.4%	100.0%
<b>Public Total</b>	<b>26.2%</b>	<b>29.5%</b>	<b>27.9%</b>	<b>16.4%</b>	<b>100.0%</b>
<b>Total All Facilities</b>	<b>14.0%</b>	<b>22.1%</b>	<b>29.9%</b>	<b>34.0%</b>	<b>100.0%</b>

Note: NCC=New Castle County.

**Table 23**  
**Percentage of Discharges by Gender, Facility Type, County and Facility Name, 2020**

<b>Nursing Home</b>	<b>Male</b>	<b>Female</b>	<b>Nursing Home</b>	<b>Male</b>	<b>Female</b>
<b>NCC (Private)</b>			<b>Kent County (Private)</b>		
Brackenville Center	31.6%	68.4%	Cadia Rehab Capitol	42.1%	57.9%
Brandywine Nursing & Rehab	49.6%	50.4%	Courtland Manor	22.7%	77.3%
Cadia Rehab Broadmeadow	38.2%	61.8%	Delaware Veterans Home	85.2%	14.8%
Cadia Rehab Pike Creek	43.3%	56.7%	Pinnacle Rehab & Health	53.4%	46.6%
Cadia Rehab Silverside	44.9%	55.1%	Silver Lake Center	50.9%	49.1%
Churchman Village	44.2%	55.8%	The Center at Eden Hill	39.2%	60.8%
Forwood Manor	34.5%	65.5%	Westminster Village	42.3%	57.7%
Foulk Manor North	24.2%	75.8%	<b>Kent County (Private) Total</b>	<b>45.1%</b>	<b>54.9%</b>
Foulk Manor South	36.1%	63.9%			
Gilpin Hall	24.3%	75.7%	<b>Sussex County (Private)</b>		
Hillside Center	56.3%	43.7%	Atlantic Shores	47.0%	53.0%
Jeanne Jugan Residence	13.0%	87.0%	Cadia Rehab Renaissance	36.3%	63.7%
Kentmere Rehab & Healthcare	34.0%	66.0%	Country Rest Home	34.5%	65.5%
Kutz Rehab & Nursing	31.3%	68.7%	Delmar Nursing & Rehab	39.4%	60.6%
ManorCare Pike Creek	47.1%	52.9%	Harbor Health Care	47.3%	52.7%
ManorCare Wilmington	46.7%	53.3%	Harrison Senior Living	40.1%	59.9%
Millcroft	37.6%	62.4%	Lofland Park Center	39.2%	60.8%
New Castle Health & Rehab	45.3%	54.7%	Milford Center	45.2%	54.8%
Newark Manor	13.3%	86.7%	Polaris Healthcare	33.9%	66.1%
Parkview Nursing & Rehab	43.3%	56.7%	Seaford Center	46.6%	53.4%
Regal Heights Healthcare & Rehab	45.7%	54.3%	The Moorings at Lewes	33.3%	66.7%
Regency Healthcare & Rehab	39.0%	61.0%	WBC Manor House	26.3%	73.7%
Shipley Manor Health Care	37.6%	62.4%	<b>Sussex County (Private) Total</b>	<b>41.1%</b>	<b>58.9%</b>
Stonegates	31.0%	69.0%			
Weston Senior Living Center	71.4%	28.6%	<b>Total Private Facilities</b>	<b>42.4%</b>	<b>57.6%</b>
WBC Cokesbury Village	32.3%	67.7%			
WBC Country House	25.9%	74.1%	<b>Public Facilities</b>		
<b>NCC (Private) Total</b>	<b>42.4%</b>	<b>57.6%</b>	DE Hosp for Chronically Ill	54.3%	45.7%
			Governor Bacon Health Center	11.5%	88.5%
			<b>Public Total</b>	<b>36.1%</b>	<b>63.9%</b>
			<b>Total All Facilities</b>	<b>42.4%</b>	<b>57.6%</b>

Note: NCC=New Castle County.

**Table 24**  
**Number of White Discharges by Age, Gender, County and Facility, 2020**

Nursing Home	<65 Male	< 65 Female	65-74 Male	65-74 Female	75-84 Male	75-84 Female	85+ Male	85+ Female	Total Male	Total Female	Total M+F
<b>NCC (Private)</b>											
Brackenville Center	7	8	7	32	26	45	24	64	64	149	213
Brandywine Nursing & Rehab	3	3	27	11	18	19	43	57	91	90	181
Cadia Rehab Broadmeadow	10	12	18	33	31	60	36	63	95	168	263
Cadia Rehab Pike Creek	45	63	25	53	42	48	27	55	139	219	358
Cadia Rehab Silverside	11	11	32	30	40	46	25	63	108	150	258
Churchman Village	13	2	7	19	34	25	23	48	77	94	171
Forwood Manor	0	0	6	12	21	33	32	78	59	123	182
Foulk Manor North	0	0	1	1	2	4	5	17	8	22	30
Foulk Manor South	0	0	1	2	0	5	12	15	13	22	35
Gilpin Hall	0	4	1	2	0	1	5	15	6	22	28
Hillside Center	21	12	23	13	16	17	16	10	76	52	128
Jeanne Jugan Residence	0	0	0	2	1	4	2	14	3	20	23
Kentmere Rehab & Healthcare	0	3	10	8	25	27	13	63	48	101	149
Kutz Rehab & Nursing	1	1	5	8	8	17	12	29	26	55	81
ManorCare Pike Creek	44	38	64	71	67	84	75	89	250	282	532
ManorCare Wilmington	22	17	31	38	29	46	34	35	116	136	252
Millcroft	1	0	1	4	11	13	22	44	35	61	96
New Castle Health & Rehab	2	6	7	5	2	3	1	1	12	15	27
Newark Manor	0	0	0	0	0	0	2	10	2	10	12
Parkview Nursing & Rehab	3	4	7	12	21	16	7	23	38	55	93
Regal Heights Healthcare &	0	0	6	10	19	20	18	28	43	58	101
Regency Healthcare & Rehab	1	0	6	7	3	7	5	6	15	20	35
Shipley Manor Health Care	0	0	3	1	15	17	22	52	40	70	110
Stonegates	0	0	1	0	2	10	10	19	13	29	42
Weston Senior Living Center	3	3	0	0	3	0	6	3	12	6	18
WBC Cokesbury Village	0	0	0	0	2	7	17	34	19	41	60
WBC Country House	0	0	0	0	6	20	15	40	21	60	81
<b>NCC (Private) Total</b>	<b>187</b>	<b>187</b>	<b>289</b>	<b>374</b>	<b>444</b>	<b>594</b>	<b>509</b>	<b>975</b>	<b>1,429</b>	<b>2,130</b>	<b>3,559</b>



**Table 24**  
**(Continued)**  
**Number of White Discharges by Age, Gender, County and Facility, 2020**

Nursing Home	<65 Male	< 65 Female	65-74 Male	65-74 Female	75-84 Male	75-84 Female	85+ Male	85+ Female	Total Male	Total Female	Total M+F
<b>Kent County (Private)</b>											
Cadia Rehab Capitol	9	7	9	14	15	26	16	32	49	79	128
Courtland Manor	0	1	0	0	0	2	3	11	3	14	17
Delaware Veterans Home	2	0	3	0	6	0	9	4	20	4	24
Pinnacle Rehab & Health	22	16	24	27	28	25	11	14	85	82	167
Silver Lake Center	17	14	18	18	24	20	11	23	70	75	145
The Center at Eden Hill	12	16	32	57	67	75	56	86	167	234	401
Westminster Village	1	3	9	14	13	16	23	36	46	69	115
<b>Kent County (Private) Total</b>	<b>63</b>	<b>57</b>	<b>95</b>	<b>130</b>	<b>153</b>	<b>164</b>	<b>129</b>	<b>206</b>	<b>440</b>	<b>557</b>	<b>997</b>
<b>Sussex County (Private)</b>											
Atlantic Shores	31	25	36	38	40	49	36	55	143	167	310
Cadia Rehab Renaissance	6	5	18	33	46	81	39	85	109	204	313
Country Rest Home	0	1	2	1	11	11	7	25	20	38	58
Delmar Nursing & Rehab	1	1	4	5	6	16	8	12	19	34	53
Harbor Health Care	2	2	17	16	19	28	25	33	63	79	142
Harrison Senior Living	5	10	34	43	48	72	39	65	126	190	316
Lofland Park Center	8	18	15	25	28	32	14	34	65	109	174
Milford Center	27	26	29	36	33	47	25	38	114	147	261
Polaris Healthcare	6	4	0	8	7	9	2	14	15	35	50
Seaford Center	19	15	22	29	23	27	6	16	70	87	157
The Moorings at Lewes	0	0	9	4	15	25	13	46	37	75	112
WBC Manor House	0	0	1	4	3	9	21	57	25	70	95
<b>Sussex County (Private) Total</b>	<b>105</b>	<b>107</b>	<b>187</b>	<b>242</b>	<b>279</b>	<b>406</b>	<b>235</b>	<b>480</b>	<b>806</b>	<b>1,235</b>	<b>2,041</b>
<b>Total Private Facilities</b>	<b>355</b>	<b>351</b>	<b>571</b>	<b>746</b>	<b>876</b>	<b>1,164</b>	<b>873</b>	<b>1,661</b>	<b>2,675</b>	<b>3,922</b>	<b>6,597</b>
<b>Public Facilities</b>											
DE Hosp for Chronically Ill	3	1	3	1	4	3	1	1	11	6	17
Governor Bacon Health	0	3	2	4	0	4	0	1	2	12	14
<b>Public Total</b>	<b>3</b>	<b>4</b>	<b>5</b>	<b>5</b>	<b>4</b>	<b>7</b>	<b>1</b>	<b>2</b>	<b>13</b>	<b>18</b>	<b>31</b>
<b>Total All Facilities</b>	<b>358</b>	<b>355</b>	<b>576</b>	<b>751</b>	<b>880</b>	<b>1,171</b>	<b>874</b>	<b>1,663</b>	<b>2,688</b>	<b>3,940</b>	<b>6,628</b>

Note: NCC=New Castle County.

**Table 25**  
**Number of Black Discharges by Age, Gender, Facility Type, County and Facility, 2020**

Nursing Home	<65 Male	< 65 Female	65-74 Male	65-74 Female	75-84 Male	75-84 Female	85+ Male	85+ Female	Total Male	Total Female	Total M+F
<b>NCC (Private)</b>											
Brackenville Center	2	1	3	5	1	5	3	7	9	18	27
Brandywine Nursing &	2	1	12	12	12	13	9	18	35	44	79
Cadia Rehab Broadmeadow	4	6	6	9	10	8	9	13	29	36	65
Cadia Rehab Pike Creek	50	31	12	20	10	8	3	16	75	75	150
Cadia Rehab Silverside	13	8	21	21	12	18	5	13	51	60	111
Churchman Village	6	1	0	6	3	9	2	3	11	19	30
Forwood Manor	0	0	0	0	4	6	4	2	8	8	16
Foulk Manor North	0	0	0	0	0	2	0	1	0	3	3
Foulk Manor South	0	0	0	0	0	0	0	1	0	1	1
Gilpin Hall	0	0	0	0	1	0	2	6	3	6	9
Hillside Center	29	26	24	24	22	12	12	17	87	79	166
Jeanne Jugan Residence	0	0	0	0	0	0	0	0	0	0	0
Kentmere Rehab &	4	0	3	6	8	11	10	24	25	41	66
Kutz Rehab & Nursing	0	0	0	0	0	0	0	1	0	1	1
ManorCare Pike Creek	23	21	22	33	24	24	16	12	85	90	175
ManorCare Wilmington	19	19	22	27	10	13	10	17	61	76	137
Millcroft	2	0	1	0	3	4	0	3	6	7	13
New Castle Health & Rehab	5	6	3	7	6	3	2	3	16	19	35
Newark Manor	0	0	0	0	0	2	0	1	0	3	3
Parkview Nursing & Rehab	12	8	14	11	7	16	5	11	38	46	84
Regal Heights Healthcare &	3	2	8	4	7	6	2	4	20	16	36
Regency Healthcare &	9	3	2	16	1	5	0	6	12	30	42
Shipley Manor Health Care	0	0	0	1	2	2	1	0	3	3	6
Stonegates	0	0	0	0	0	0	0	0	0	0	0
Weston Senior Living Center	0	0	0	0	3	0	0	0	3	0	3
WBC Cokesbury Village	0	0	0	0	0	0	0	1	0	1	1
WBC Country House	0	0	0	0	0	0	0	0	0	0	0
<b>NCC (Private) Total</b>	<b>183</b>	<b>133</b>	<b>153</b>	<b>202</b>	<b>146</b>	<b>167</b>	<b>95</b>	<b>180</b>	<b>577</b>	<b>682</b>	<b>1,259</b>

**Table 25  
(Continued)**

**Number of Black Discharges by Age, Gender, Facility Type, County and Facility, 2020**

<b>Nursing Home</b>	<b>&lt;65 Male</b>	<b>&lt; 65 Female</b>	<b>65-74 Male</b>	<b>65-74 Female</b>	<b>75-84 Male</b>	<b>75-84 Female</b>	<b>85+ Male</b>	<b>85+ Female</b>	<b>Total Male</b>	<b>Total Female</b>	<b>Total M+F</b>
<b>Kent County (Private)</b>											
Cadia Rehab Capitol	5	2	12	3	4	4	2	10	23	19	42
Courtland Manor	0	0	1	0	0	0	1	3	2	3	5
Delaware Veterans Home	1	0	0	0	1	0	1	0	3	0	3
Pinnacle Rehab & Health	5	6	20	10	19	10	1	3	45	29	74
Silver Lake Center	17	13	9	4	11	8	7	10	44	35	79
The Center at Eden Hill	4	10	8	23	12	29	4	9	28	71	99
Westminster Village	1	2	6	2	6	3	1	1	14	8	22
<b>Kent County (Private) Total</b>	<b>33</b>	<b>33</b>	<b>56</b>	<b>42</b>	<b>53</b>	<b>54</b>	<b>17</b>	<b>36</b>	<b>159</b>	<b>165</b>	<b>324</b>
<b>Sussex County (Private)</b>											
Atlantic Shores	3	5	7	6	4	1	5	7	19	19	38
Cadia Rehab Renaissance	1	2	0	2	8	3	5	9	14	16	30
Country Rest Home	0	0	0	0	0	0	0	0	0	0	0
Delmar Nursing & Rehab	1	0	3	1	3	5	2	2	9	8	17
Harbor Health Care	4	2	5	0	4	4	2	1	15	7	22
Harrison Senior Living	0	3	8	1	5	3	0	10	13	17	30
Lofland Park Center	3	4	4	6	1	3	4	2	12	15	27
Milford Center	15	18	9	5	6	11	3	1	33	35	68
Polaris Healthcare	0	0	4	0	0	0	0	2	4	2	6
Seaford Center	14	9	6	8	4	3	0	1	24	21	45
The Moorings at Lewes	0	0	0	0	1	0	0	1	1	1	2
WBC Manor House	0	0	0	0	0	0	0	0	0	0	0
<b>Sussex County (Private) Total</b>	<b>41</b>	<b>43</b>	<b>46</b>	<b>29</b>	<b>36</b>	<b>33</b>	<b>21</b>	<b>36</b>	<b>144</b>	<b>141</b>	<b>285</b>
<b>Total Private Facilities</b>	<b>257</b>	<b>209</b>	<b>255</b>	<b>273</b>	<b>235</b>	<b>254</b>	<b>133</b>	<b>252</b>	<b>880</b>	<b>988</b>	<b>1,868</b>
<b>Public Facilities</b>											
DE Hosp for Chronically Ill	0	4	4	1	4	1	0	3	8	9	17
Governor Bacon Health Center	1	4	0	2	0	1	0	3	1	10	11
<b>Public Total</b>	<b>1</b>	<b>8</b>	<b>4</b>	<b>3</b>	<b>4</b>	<b>2</b>	<b>0</b>	<b>6</b>	<b>9</b>	<b>19</b>	<b>28</b>
<b>Total All Facilities</b>	<b>258</b>	<b>217</b>	<b>259</b>	<b>276</b>	<b>239</b>	<b>256</b>	<b>133</b>	<b>258</b>	<b>889</b>	<b>1,007</b>	<b>1,896</b>

Note: NCC=New Castle County.

**Table 26**  
**Number of Discharges by Disposition, Facility Type, County and Facility Name, 2020**

Nursing Home	Own or Relative's Home	Hospital	Assisted Living	Private LTCF	State Owned LTCF	Death	Other	Total
<b>NCC (Private)</b>								
Brackenville Center	114	39	18	3	1	64	11	250
Brandywine Nursing & Rehab	22	185	9	0	0	60	0	276
Cadia Rehab Broadmeadow	204	88	8	14	2	18	1	335
Cadia Rehab Pike Creek	354	157	17	5	0	12	0	545
Cadia Rehab Silverside	305	42	8	7	0	30	0	392
Churchman Village	161	18	4	1	0	22	0	206
Forwood Manor	128	30	18	2	0	22	0	200
Foult Manor North	8	0	1	3	0	20	1	33
Foult Manor South	6	5	3	4	1	17	0	36
Gilpin Hall	0	6	3	3	0	25	0	37
Hillside Center	200	80	1	6	0	15	0	302
Jeanne Jugan Residence	5	0	0	0	0	18	0	23
Kentmere Rehab & Healthcare	114	52	13	2	0	32	2	215
Kutz Rehab & Nursing	19	25	3	2	0	33	1	83
ManorCare Pike Creek	427	200	25	18	0	61	0	731
ManorCare Wilmington	246	73	25	10	0	50	1	405
Millcroft	39	34	13	2	0	20	1	109
New Castle Health & Rehab	16	43	0	2	0	1	2	64
Newark Manor	0	0	2	0	0	13	0	15
Parkview Nursing & Rehab	75	37	3	2	0	61	2	180
Regal Heights Healthcare & Rehab	68	33	3	0	0	36	0	140
Regency Healthcare & Rehab	28	45	0	1	0	8	0	82
Shipley Manor Health Care	42	22	7	14	0	25	7	117
Stonegates	18	5	0	0	0	19	0	42
Weston Senior Living Center	6	12	0	0	0	3	0	21
WBC Cokesbury Village	20	6	10	2	0	24	0	62
WBC Country House	4	16	0	2	0	28	31	81
<b>NCC (Private) Total</b>	<b>2,629</b>	<b>1,253</b>	<b>194</b>	<b>105</b>	<b>4</b>	<b>737</b>	<b>60</b>	<b>4,982</b>

**Table 26  
(Continued)**

**Number of Discharges by Disposition, Facility Type, County and Facility Name, 2020**

<b>Nursing Home</b>	<b>Own or Relative's Home</b>	<b>Hospital</b>	<b>Assisted Living</b>	<b>Private LTCF</b>	<b>State Owned LTCF</b>	<b>Death</b>	<b>Other</b>	<b>Total</b>
<b>Kent County (Private)</b>								
Cadia Rehab Capitol	93	20	4	11	0	42	1	171
Courtland Manor	6	1	0	1	0	14	0	22
Delaware Veterans Home	1	1	0	0	0	25	0	27
Pinnacle Rehab & Health	83	106	2	12	0	40	6	249
Silver Lake Center	98	78	4	12	0	36	0	228
The Center at Eden Hill	372	99	26	5	7	4	0	513
Westminster Village	64	21	17	3	0	29	8	142
<b>Kent County (Private) Total</b>	<b>717</b>	<b>326</b>	<b>53</b>	<b>44</b>	<b>7</b>	<b>190</b>	<b>15</b>	<b>1,352</b>
<b>Sussex County (Private)</b>								
Atlantic Shores	156	134	12	8	0	43	0	353
Cadia Rehab Renaissance	214	76	1	19	0	43	0	353
Country Rest Home	4	6	4	0	3	41	0	58
Delmar Nursing & Rehab	26	7	1	2	0	35	0	71
Harbor Health Care	79	31	4	0	0	53	0	167
Harrison Senior Living	160	102	8	0	1	73	3	347
Lofland Park Center	119	28	3	6	2	45	1	204
Milford Center	171	62	0	29	1	68	10	341
Polaris Healthcare	40	11	1	0	0	3	1	56
Seaford Center	120	42	1	22	0	19	0	204
The Moorings at Lewes	69	14	9	1	0	20	1	114
WBC Manor House	27	14	19	3	1	31	0	95
<b>Sussex County (Private) Total</b>	<b>1,185</b>	<b>527</b>	<b>63</b>	<b>90</b>	<b>8</b>	<b>474</b>	<b>16</b>	<b>2,363</b>
<b>Total Private Facilities</b>								
	<b>4,531</b>	<b>2,106</b>	<b>310</b>	<b>239</b>	<b>19</b>	<b>1,401</b>	<b>91</b>	<b>8,697</b>
<b>Public Facilities</b>								
DE Hosp for Chronically Ill	0	8	0	0	0	27	0	35
Governor Bacon Health Center	0	0	0	1	22	3	0	26
<b>Public Total</b>	<b>0</b>	<b>8</b>	<b>0</b>	<b>1</b>	<b>22</b>	<b>30</b>	<b>0</b>	<b>61</b>
<b>Total All Facilities</b>								
	<b>4,531</b>	<b>2,114</b>	<b>310</b>	<b>240</b>	<b>41</b>	<b>1,431</b>	<b>91</b>	<b>8,758</b>

Note: NCC=New Castle County.

**Table 27**  
**Percentage of Discharges by Disposition, Facility Type, County and Facility Name, 2020**

Nursing Home	Own or Relative's Home	Hospital	Assisted Living	Private LTCF	State Owned LTCF	Death	Other	Total
<b>NCC (Private)</b>								
Brackenville Center	45.6%	15.6%	7.2%	1.2%	0.4%	25.6%	4.4%	100.0%
Brandywine Nursing & Rehab	8.0%	67.0%	3.3%	0.0%	0.0%	21.7%	0.0%	100.0%
Cadia Rehab Broadmeadow	60.9%	26.3%	2.4%	4.2%	0.6%	5.4%	0.3%	100.0%
Cadia Rehab Pike Creek	65.0%	28.8%	3.1%	0.9%	0.0%	2.2%	0.0%	100.0%
Cadia Rehab Silverside	77.8%	10.7%	2.0%	1.8%	0.0%	7.7%	0.0%	100.0%
Churchman Village	78.2%	8.7%	1.9%	0.5%	0.0%	10.7%	0.0%	100.0%
Forwood Manor	64.0%	15.0%	9.0%	1.0%	0.0%	11.0%	0.0%	100.0%
Foulk Manor North	24.2%	0.0%	3.0%	9.1%	0.0%	60.6%	3.0%	100.0%
Foulk Manor South	16.7%	13.9%	8.3%	11.1%	2.8%	47.2%	0.0%	100.0%
Gilpin Hall	0.0%	16.2%	8.1%	8.1%	0.0%	67.6%	0.0%	100.0%
Hillside Center	66.2%	26.5%	0.3%	2.0%	0.0%	5.0%	0.0%	100.0%
Jeanne Jugan Residence	21.7%	0.0%	0.0%	0.0%	0.0%	78.3%	0.0%	100.0%
Kentmere Rehab & Healthcare	53.0%	24.2%	6.0%	0.9%	0.0%	14.9%	0.9%	100.0%
Kutz Rehab & Nursing	22.9%	30.1%	3.6%	2.4%	0.0%	39.8%	1.2%	100.0%
ManorCare Pike Creek	58.4%	27.4%	3.4%	2.5%	0.0%	8.3%	0.0%	100.0%
ManorCare Wilmington	60.7%	18.0%	6.2%	2.5%	0.0%	12.3%	0.2%	100.0%
Millcroft	35.8%	31.2%	11.9%	1.8%	0.0%	18.3%	0.9%	100.0%
New Castle Health & Rehab	25.0%	67.2%	0.0%	3.1%	0.0%	1.6%	3.1%	100.0%
Newark Manor	0.0%	0.0%	13.3%	0.0%	0.0%	86.7%	0.0%	100.0%
Parkview Nursing & Rehab	41.7%	20.6%	1.7%	1.1%	0.0%	33.9%	1.1%	100.0%
Regal Heights Healthcare &	48.6%	23.6%	2.1%	0.0%	0.0%	25.7%	0.0%	100.0%
Regency Healthcare & Rehab	34.1%	54.9%	0.0%	1.2%	0.0%	9.8%	0.0%	100.0%
Shipley Manor Health Care	35.9%	18.8%	6.0%	12.0%	0.0%	21.4%	6.0%	100.0%
Stonegates	42.9%	11.9%	0.0%	0.0%	0.0%	45.2%	0.0%	100.0%
Weston Senior Living Center	28.6%	57.1%	0.0%	0.0%	0.0%	14.3%	0.0%	100.0%
WBC Cokesbury Village	32.3%	9.7%	16.1%	3.2%	0.0%	38.7%	0.0%	100.0%
WBC Country House	4.9%	19.8%	0.0%	2.5%	0.0%	34.6%	38.3%	100.0%
<b>NCC (Private) Total</b>	<b>52.8%</b>	<b>25.2%</b>	<b>3.9%</b>	<b>2.1%</b>	<b>0.1%</b>	<b>14.8%</b>	<b>1.2%</b>	<b>100.0%</b>

**Table 27  
(Continued)**

**Percentage of Discharges by Disposition, Facility Type, County and Facility Name, 2020**

<b>Nursing Home</b>	<b>Own or Relative's Home</b>	<b>Hospital</b>	<b>Assisted Living</b>	<b>Private LTCF</b>	<b>State Owned LTCF</b>	<b>Death</b>	<b>Other</b>	<b>Total</b>
<b>Kent County (Private)</b>								
Cadia Rehab Capitol	54.4%	11.7%	2.3%	6.4%	0.0%	24.6%	0.6%	100.0%
Courtland Manor	27.3%	4.5%	0.0%	4.5%	0.0%	63.6%	0.0%	100.0%
Delaware Veterans Home	3.7%	3.7%	0.0%	0.0%	0.0%	92.6%	0.0%	100.0%
Pinnacle Rehab & Health	33.3%	42.6%	0.8%	4.8%	0.0%	16.1%	2.4%	100.0%
Silver Lake Center	43.0%	34.2%	1.8%	5.3%	0.0%	15.8%	0.0%	100.0%
The Center at Eden Hill	72.5%	19.3%	5.1%	1.0%	1.4%	0.8%	0.0%	100.0%
Westminster Village	45.1%	14.8%	12.0%	2.1%	0.0%	20.4%	5.6%	100.0%
<b>Kent County (Private) Total</b>	<b>53.0%</b>	<b>24.1%</b>	<b>3.9%</b>	<b>3.3%</b>	<b>0.5%</b>	<b>14.1%</b>	<b>1.1%</b>	<b>100.0%</b>
<b>Sussex County (Private)</b>								
Atlantic Shores	44.2%	38.0%	3.4%	2.3%	0.0%	12.2%	0.0%	100.0%
Cadia Rehab Renaissance	60.6%	21.5%	0.3%	5.4%	0.0%	12.2%	0.0%	100.0%
Country Rest Home	6.9%	10.3%	6.9%	0.0%	5.2%	70.7%	0.0%	100.0%
Delmar Nursing & Rehab	36.6%	9.9%	1.4%	2.8%	0.0%	49.3%	0.0%	100.0%
Harbor Health Care	47.3%	18.6%	2.4%	0.0%	0.0%	31.7%	0.0%	100.0%
Harrison Senior Living	46.1%	29.4%	2.3%	0.0%	0.3%	21.0%	0.9%	100.0%
Lofland Park Center	58.3%	13.7%	1.5%	2.9%	1.0%	22.1%	0.5%	100.0%
Milford Center	50.1%	18.2%	0.0%	8.5%	0.3%	19.9%	2.9%	100.0%
Polaris Healthcare	71.4%	19.6%	1.8%	0.0%	0.0%	5.4%	1.8%	100.0%
Seaford Center	58.8%	20.6%	0.5%	10.8%	0.0%	9.3%	0.0%	100.0%
The Moorings at Lewes	60.5%	12.3%	7.9%	0.9%	0.0%	17.5%	0.9%	100.0%
WBC Manor House	28.4%	14.7%	20.0%	3.2%	1.1%	32.6%	0.0%	100.0%
<b>Sussex County (Private) Total</b>	<b>50.1%</b>	<b>22.3%</b>	<b>2.7%</b>	<b>3.8%</b>	<b>0.3%</b>	<b>20.1%</b>	<b>0.7%</b>	<b>100.0%</b>
<b>Total Private Facilities</b>	<b>52.1%</b>	<b>24.2%</b>	<b>3.6%</b>	<b>2.7%</b>	<b>0.2%</b>	<b>16.1%</b>	<b>1.0%</b>	<b>100.0%</b>
<b>Public Facilities</b>								
DE Hosp for Chronically Ill	0.0%	22.9%	0.0%	0.0%	0.0%	77.1%	0.0%	100.0%
Governor Bacon Health Center	0.0%	0.0%	0.0%	3.8%	84.6%	11.5%	0.0%	100.0%
<b>Public Total</b>	<b>0.0%</b>	<b>13.1%</b>	<b>0.0%</b>	<b>1.6%</b>	<b>36.1%</b>	<b>49.2%</b>	<b>0.0%</b>	<b>100.0%</b>
<b>Total All Facilities</b>	<b>51.7%</b>	<b>24.1%</b>	<b>3.5%</b>	<b>2.7%</b>	<b>0.5%</b>	<b>16.3%</b>	<b>1.0%</b>	<b>100.0%</b>

Note: NCC=New Castle County.

## APPENDIX A: 2020 NURSING HOME TRENDS AMONG THE UNDER 65 POPULATION

In 2020, the DHCC began collecting cohort-specific admissions, discharge, and billable patient days data on the Under 65 nursing home patient population. Prior to 2019, data pertaining to this cohort were consolidated in an Under 65 category. Beginning in 2019, Delaware nursing homes report monthly utilization data for the following Under 65 categories: ages 18-34, ages 35-44, ages 45-54, and ages 55-64. The DHCC uses these data to track age-specific nursing home metrics among younger populations.

Tables A1 and A2 include 2020 admissions and discharge data among sub-cohorts in the Under 65 population. Patients under the age of 65 accounted for 1,285 nursing home admissions (15.6%) and 1,225 nursing home discharges (14.0%). Males accounted for 54.1% of admissions and 52.5% of discharges among the Under 65 population in 2020. White patients accounted for 61.1% of admissions and 58.2% of discharges among the Under 65 population. The number of admissions and discharges among the Under 65 population increased with age across the 18-34, 35-44, 45-54, and 55-64 age groups. The majority (37 of 48; 77.1%) of Delaware nursing homes admitted at least one patient under the age of 65 in 2020. Eight Delaware nursing homes (16.7%) admitted at least one patient ages 18-34 in 2020.

**Table A1: Delaware Nursing Home Admissions among the Under 65 Patient Population, by Sex, Race, and Facility Type, and County, 2020**

	Under 65: Age Cohort				
	18-34 yrs.	35-44 yrs.	45-54 yrs.	55-64 yrs.	Total
<b>Sex</b>					
Male	18 (2.6%)	53 (7.6%)	112 (16.1%)	512 (73.7%)	695 (100.0%)
Female	4 (0.7%)	21 (3.6%)	107 (18.1%)	458 (77.6%)	590 (100.0%)
<b>Race</b>					
White	4 (0.5%)	45 (5.7%)	137 (17.5%)	599 (76.3%)	785 (100.0%)
Black	14 (3.1%)	25 (5.5%)	74 (16.3%)	342 (75.2%)	455 (100.0%)
Other	4 (8.9%)	4 (8.9%)	8 (17.8%)	29 (64.4%)	45 (100.0%)
<b>Facility Type and County</b>					
Private Facilities					
New Castle	16 (2.1%)	57 (7.5%)	130 (17.0%)	561 (73.4%)	764 (100.0%)
Kent	3 (1.4%)	4 (1.9%)	33 (15.3%)	175 (81.4%)	215 (100.0%)
Sussex	3 (1.0%)	13 (4.2%)	64 (20.9%)	226 (73.9%)	306 (100.0%)
Public Facilities	0 (0.0%)	0 (0.0%)	2 (20.0%)	8 (80.0%)	10 (100.0%)
<b>Total Admissions Under 65</b>	<b>22 (1.7%)</b>	<b>74 (5.8%)</b>	<b>219 (17.0%)</b>	<b>970 (75.5%)</b>	<b>1,285 (100.0%)</b>



**Table A2: Delaware Nursing Home Discharges among the Under 65 Patient Population, by Sex, Race, and Facility Type, and County, 2020**

	Under 65: Age Cohort				
	18-34 yrs.	35-44 yrs.	45-54 yrs.	55-64 yrs.	Total
<b>Sex</b>					
Male	21 (3.3%)	42 (6.5%)	109 (17.0%)	471 (73.3%)	643 (100.0%)
Female	6 (1.0%)	26 (4.5%)	114 (19.6%)	436 (74.9%)	582 (100.0%)
<b>Race</b>					
White	7 (1.0%)	39 (5.5%)	138 (19.4%)	529 (74.2%)	713 (100.0%)
Black	17 (3.6%)	27 (5.7%)	76 (16.0%)	355 (74.7%)	475 (100.0%)
Other	3 (8.1%)	2 (5.4%)	9 (24.3%)	23 (62.2%)	37 (100.0%)
<b>Facility Type and County</b>					
Private Facilities					
New Castle	17 (2.4%)	48 (6.7%)	124 (17.2%)	531 (73.8%)	720 (100.0%)
Kent	2 (1.0%)	6 (3.1%)	22 (11.5%)	162 (84.4%)	192 (100.0%)
Sussex	8 (2.7%)	14 (4.7%)	72 (24.2%)	203 (68.4%)	297 (100.0%)
Public Facilities	0 (0.0%)	0 (0.0%)	5 (31.3%)	11 (68.8%)	16 (100.0%)
<b>Total Discharges Under 65</b>	<b>27 (2.2%)</b>	<b>68 (5.6%)</b>	<b>223 (18.2%)</b>	<b>907 (74.0%)</b>	<b>1,225 (100.0%)</b>