

2019 DELAWARE NURSING HOME UTILIZATION STATISTICAL REPORT

**Delaware Health and Social Services
Health Care Commission
410 Federal Street
Dover, DE 19901**



DELAWARE HEALTH AND SOCIAL SERVICES

EXECUTIVE SUMMARY

In 2019, 47 Delaware nursing homes operated a total of 4,928 licensed beds. Most Delaware nursing homes (45 of 47) were privately owned and operated in 2019. Private facilities operated 94.3% of all nursing home beds in Delaware. Delaware's two publicly-operated nursing home facilities (Governor Bacon Health Center and the Delaware Hospital for the Chronically Ill) operated the remaining 5.7% of nursing home beds. In 2019, private nursing homes in New Castle, Kent, and Sussex Counties operated at 87.5%, 78.2%, and 88.2% occupancy, respectively; Delaware's public nursing homes operated at 52.4% occupancy.

In 2019, a total of 11,821 patients were admitted to Delaware nursing homes. In the same year, facilities discharged 11,353 patients. Sixty-one percent of patients discharged from Delaware nursing homes in 2019 were discharged home. Admissions and discharges to Delaware nursing homes follow demographic trends across Delaware. In 2019, White patients accounted for 78.6% of admissions and 79.2% of discharges; Black patients accounted for 19.1% of admissions and 18.7% of discharges. Patients 75-84 years and 85 years or older accounted for 31.5% and 32.7%, respectively, of 2019 Delaware nursing home admissions. Twenty-two percent of 2019 nursing home admissions were individuals ages 65-74. Individuals under the age of 65 accounted for 13.5% of 2019 admissions. Similar age-related trends were observed for 2019 discharges.

The Delaware Health Care Commission (DHCC) continues to monitor annual nursing home admissions data to identify newly-emerging trends pertaining to long-term care and rehabilitations services within Delaware. Long-term care utilization surveillance includes monitoring projected changes in population size at the county and state levels. The growing size and the changing demographics of Delaware's population are central to the understanding of the distribution of nursing homes, the number of licensed nursing home beds, and their utilization.

Between 2020 and 2050, Delaware's total population is expected to increase 7.6% (from 977,780 in 2020 to 1,051,762 in 2050). Overall population growth is distributed unevenly across Delaware's counties (New Castle: 2.3%; Kent: 5.4%; Sussex: 21.9%). Projected population growth is more dramatic among older Delawareans. From 2020 to 2050, the statewide population of Delawareans age 65 and older is expected to increase 39.2% (from 185,011 to 257,590). Among this subpopulation, cohorts of the oldest Delawareans are expected to increase most rapidly in size. Between 2020 and 2050, statewide percentages of residents age 65-69, 75-79, 80-84, and 85+ are projected to increase 8.3%, 5.9%, 34.3%, 82.7%, and 153.6%, respectively.

TABLE OF CONTENTS

INTRODUCTION	1
STATEWIDE POPULATION PROJECTIONS	1
PART 1: 2019 DELAWARE NURSING HOME UTILIZATION STATISTICS	4
NUMBER OF NURSING HOME BEDS	4
UTILIZATION	4
OCCUPANCY	5
ADMISSIONS.....	6
DISCHARGES.....	9
SOURCE OF PAYMENT	12
PART 2: 2019 FACILITY-LEVEL NURSING HOME UTILIZATION STATISTICS.....	14
APPENDIX A: 2019 NURSING HOME TRENDS AMONG THE UNDER 65 POPULATION	49
APPENDIX B: 2019 FACILITY CHANGES	52

ACKNOWLEDGEMENTS

This report was funded by the Delaware Health and Social Services, Health Care Commission; it is the product of collaborative support from the Delaware Health Care Facilities Association, the Division of Services for Aging and Adults with Physical Disabilities, and all Delaware nursing homes. The Health Care Commission thanks these stakeholders and other subject matter experts who provided background information, analysis, and feedback to inform the development of this report.

INTRODUCTION

This, the 33rd edition of the Delaware Nursing Home Utilization Statistical Report (DNHUSR), summarizes 2019 data submitted by Delaware nursing homes¹. On a monthly basis, from January through December 2019, Delaware nursing homes submitted utilization data to the Delaware Health Care Commission (DHCC). DHCC contacted nursing home facilities on the first day of each month via e-mail to request facility utilization data for the previous month; if a facility's monthly data submission was delayed, follow-up contact was made via fax and telephone. Upon initial data submission, DHCC converted the data to an electronic format and reviewed each facility's report for internal consistency and monitoring. At the end of the reporting year, DHCC aggregated monthly data to yield annual estimates by facility and county.

The DNHUSR presents 2019 Delaware nursing home data in two main sections. **Part 1: Delaware Nursing Home Utilization Statistics** highlights historical facility utilization trend data from 2009 through 2019. Most data presented in this section are aggregated to the state- and county-levels. **Part 2: Facility-Level Nursing Home Utilization Statistics** presents facility-level measures, including total patient days, occupancy rates, percentage of patients by source of payment, and annual admissions and discharges. Percentages in any given data category may not sum to 100% due to numerical rounding. Refer to Appendix B for changes in facilities' names and/or number of licensed beds that occurred in 2019.

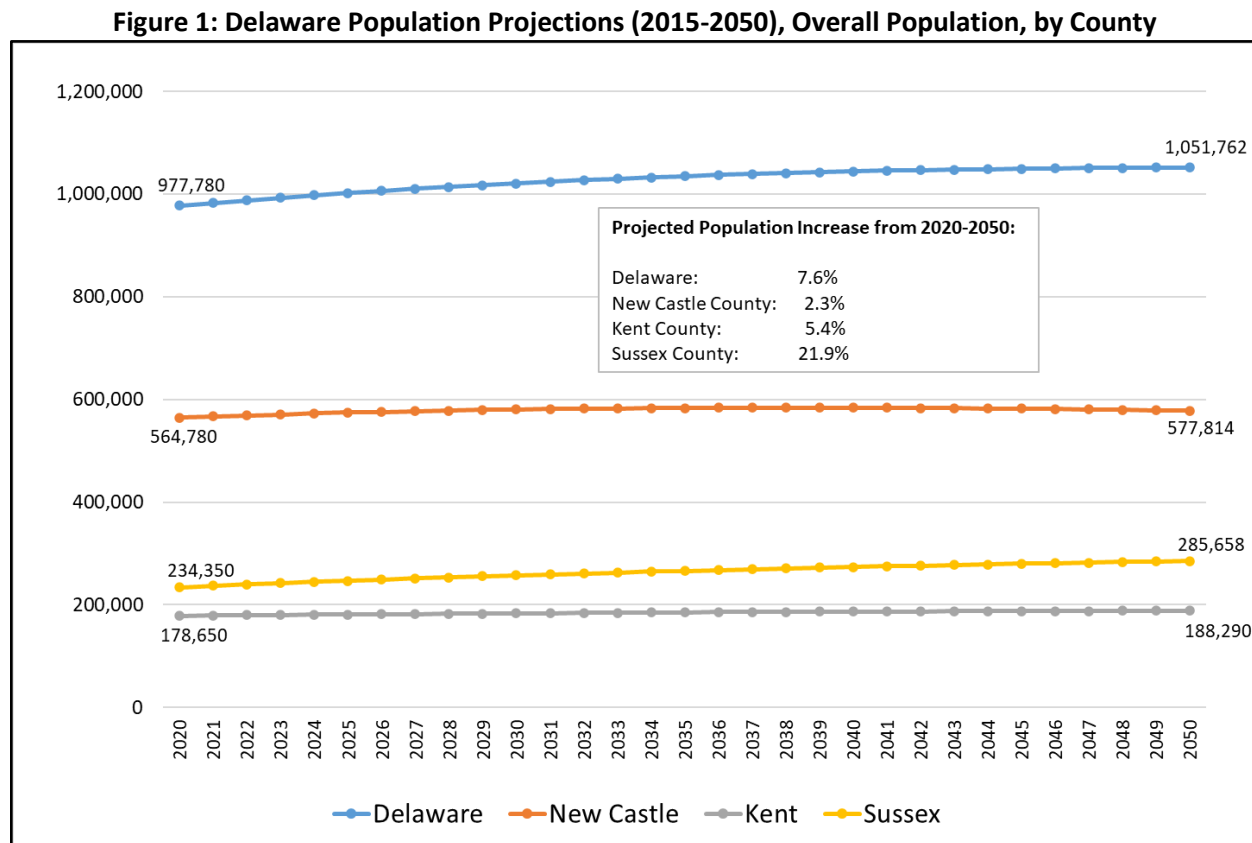
STATEWIDE POPULATION PROJECTIONS

The growing size and the changing demographics of Delaware's population are central to the understanding of the distribution of nursing homes, the number of licensed nursing home beds, and their utilization. DHCC analyzed 2019 Delaware Population Consortium data to provide the context within which to evaluate Delaware's ability to meet nursing home bed demand. Figure 1 shows the projected increase of Delaware's total population from 2020 to 2050. Figure 2 shows the projected population increase over the same time period among Delawareans age 65 and older.

Between 2020 and 2050, Delaware's total population is expected to increase 7.6% (from 977,780 in 2020 to 1,051,762 in 2050). Overall population growth is distributed unevenly across Delaware's

¹ Excluded from this report are facilities that serve individuals under the age of 18, as well as Intermediate Care Facilities for Individuals with Intellectual Developmental Disabilities (ICF/IID). ICF/IID facilities provide active and comprehensive and individualized treatment and rehabilitation services to promote functional status and independence.

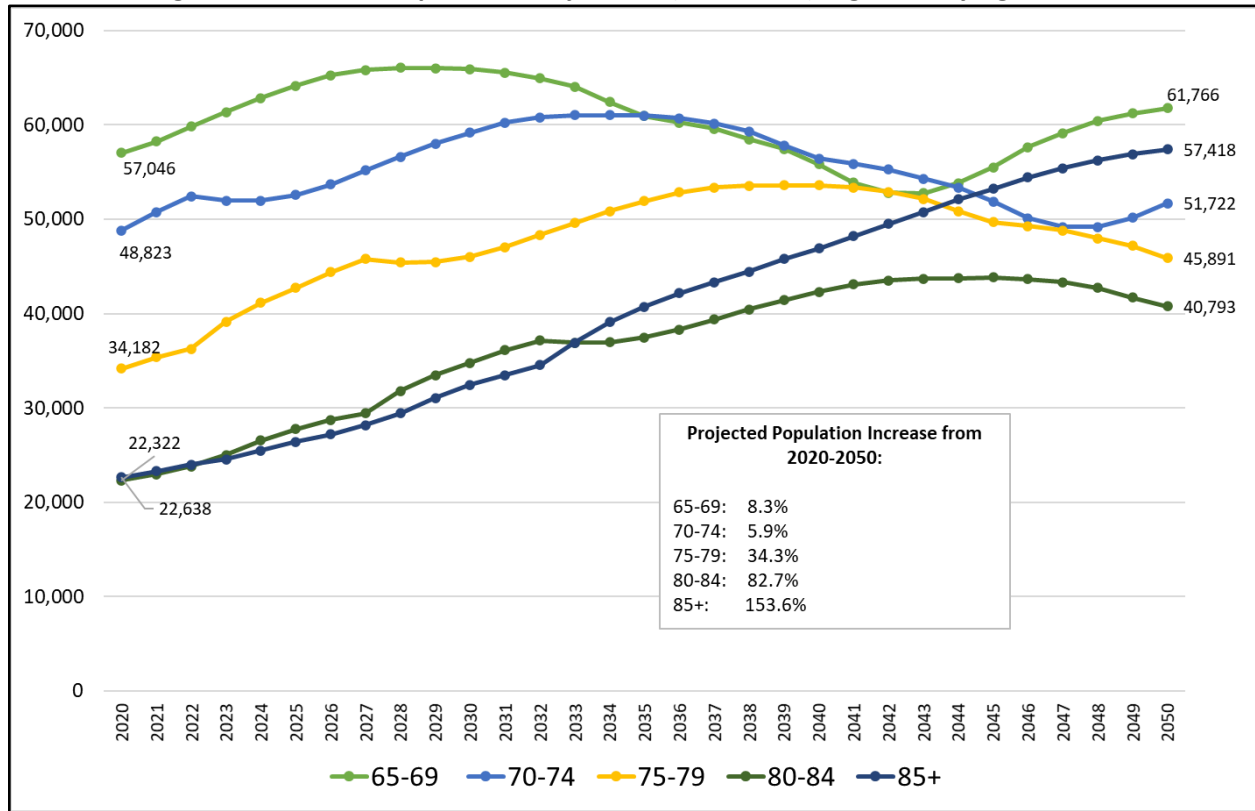
counties. From 2020-2050, New Castle and Kent Counties are expected to experience a 2.3% and 5.4% increase in total population, respectively; total population growth for Sussex County is estimated at 21.9% for the same time period.



Source: Annual Population Projections, Delaware Population Consortium, Version 2019.0, October 2019.

Projected population growth is more dramatic among older Delawareans. From 2020 to 2050, the statewide population of Delawareans age 65 and older is expected to increase 39.2% (from 185,011 to 257,590). Among this subpopulation, cohorts of the oldest Delawareans are expected to increase most rapidly in size. Between 2020 and 2050, statewide percentages of residents age 65-69, 75-79, 80-84, and 85+ are projected to increase 8.3%, 5.9%, 34.3%, 82.7%, and 153.6%, respectively (Figure 2).

Figure 2: Delaware Population Projections (2020-2050), Age 65+, by Age Cohort



Source: Annual Population Projections, Delaware Population Consortium, Version 2019.0, October 2019.

PART 1: 2019 DELAWARE NURSING HOME UTILIZATION STATISTICS

NUMBER OF NURSING HOME BEDS

In 2019, 47 Delaware nursing homes operated 4,928 licensed beds. Most Delaware nursing homes – 45 out of 47 – were privately owned and operated in 2019. Private facilities operated 94.3% of all nursing home beds in Delaware. Delaware’s two publicly-operated nursing home facilities (Governor Bacon Health Center and the Delaware Hospital for the Chronically Ill) operated the remaining 5.7% of nursing home beds.

Table 1: Delaware Nursing Home Beds, by County and Facility Type, 2009-2019

Year	Private Facilities								Public Facilities		All Facilities	
	New Castle County		Kent County		Sussex County		Total Private					
	Homes	Beds	Homes	Beds	Homes	Beds	Homes	Beds	Homes	Beds	Homes	Beds
2009	26	2,519	6	642	11	1,234	43	4,395	4	626	47	5,021
2010	26	2,519	6	642	11	1,234	43	4,395	3	591	46	4,986
2011	26	2,519	6	642	11	1,234	43	4,395	3	591	46	4,986
2012	27	2,569	6	672	11	1,264	44	4,505	3	576	47	5,081
2013	27	2,649	6	672	11	1,264	44	4,585	3	522	47	5,107
2014	27	2,649	6	672	11	1,264	44	4,585	3	375	47	4,960
2015	27	2,646	6	672	11	1,264	44	4,582	3	312	47	4,894
2016	27	2,647	6	678	11	1,264	44	4,589	2	287	46	4,876
2017	27	2,641	6	678	11	1,264	44	4,583	2	283	46	4,866
2018	27	2,629	7	764	11	1,264	45	4,657	2	283	47	4,940
2019	27	2,617	7	764	11	1,264	45	4,645	2	283	47	4,928
2009-2019 % Change		3.9%		19.0%		2.4%		5.7%		-54.8%		-1.9%

UTILIZATION

A commonly-used measure of nursing home utilization is the number of billable patient days generated by a facility over a given time period. A billable patient day represents a unit of time (i.e., one day) during which the facility’s services are used by one patient. For example, if a nursing home has 100 patients on a day, the facility has generated 100 billable patient days for that 24-hour period. If a facility’s number of billable patient days increases from one time period to the next, it is an indication that the facility is caring for more patients, caring for patients for longer periods of time, or a combination of these two factors. Mathematically, billable patient days per facility per year are calculated by summing each facility’s monthly billable patient days over a 12-month period.

In 2014, annual billable patient days for private facilities in New Castle and Sussex Counties began gradually declining. These declines may reflect national trends by which the expansion of home and community-based services and supports has shifted the locus of long-term care away from nursing homes. The increase in billable patient days among private facilities in Kent County from 2018 (209,311) to 2019 (218,157) is partially explained by the impact of The Center for Eden Hill, an 80-bed private facility in Kent County that became operational in April 2018. Following its opening, the facility experienced an accompanying ramp-up period during which occupancy rates averaged 34.4%; the corresponding 2019 occupancy rate for The Center for Eden Hill was 64.4%.

Table 2: Number of Billable Patient Days Utilized by Year, Facility Type, and County, 2009-2019

Year	Private Facilities				Public Facilities	All Facilities
	New Castle County	Kent County	Sussex County	Total Private		
2009	824,262	219,019	404,234	1,447,515	137,584	1,585,099
2010	838,037	218,593	402,188	1,458,818	137,824	1,596,642
2011	829,974	219,302	398,550	1,447,826	131,675	1,579,501
2012	843,039	219,558	403,842	1,466,439	114,177	1,580,616
2013	860,924	218,651	404,942	1,484,517	98,108	1,582,625
2014	871,456	224,370	419,167	1,514,993	87,792	1,602,785
2015	867,015	226,841	412,646	1,506,502	76,993	1,583,495
2016	862,050	224,549	409,052	1,495,651	71,111	1,566,762
2017	864,047	214,618	409,816	1,488,481	69,703	1,551,184
2018	843,990	209,311	404,814	1,458,115	61,903	1,520,018
2019	835,845	218,157	406,828	1,460,830	54,139	1,514,969
2009-2019 % Change	1.4%	-0.4%	0.6%	0.9%	-60.7%	-4.4%

OCCUPANCY

Occupancy rates are helpful for putting facilities' utilization data within the context of available resources. A facility's occupancy rate reflects the percentage of available beds occupied by patients throughout the reporting year. Occupancy rates were weighted based on the number of days a facility was open during the reporting year. Mathematically, for facilities that were open 365 days of the reporting year, **Weighted Occupancy Rate** = [(Number of Billable Patient Days) / (Number of Licensed Bed Days)] * 100% where (Number of Licensed Bed Days) equaled the number of licensed beds in a facility (calculated as the average number of beds over the entire 12-month period) multiplied by 365. If a facility was open fewer than 365 days of the reporting year, the same weighted occupancy formula was used with the exception that

(Number of Licensed Bed Days) equaled the number of licensed beds multiplied by the actual number of days the facility was open.

In 2019, private nursing homes in New Castle, Kent, and Sussex Counties operated at 87.5%, 78.2%, and 88.2% occupancy, respectively (Table 3). In 2019, Delaware's two public nursing homes collectively operated at 52.4% occupancy. Since 2009, occupancy rates for private nursing homes have hovered in the high 80th percentile or low 90th percentile. The comparatively lower occupancy rate for Kent County private nursing homes, in comparison to New Castle and Sussex County private nursing homes, reflects a facility-related nuance: the Delaware Veterans Home (a larger, 150-bed facility) operates at a comparatively lower-occupancy (47.0% in 2019) due to admissions-based patient criteria.

Table 3: Weighted Occupancy Rates, 2009-2019, by Facility Type and County

Year	Private Facilities				Public Facilities	All Facilities
	New Castle County	Kent County	Sussex County	Total Private		
2009	89.6%	93.5%	89.7%	90.2%	60.2%	86.5%
2010	91.1%	93.3%	89.3%	90.9%	63.9%	87.7%
2011	90.3%	93.6%	88.5%	90.3%	61.0%	86.8%
2012	91.1%	89.5%	87.5%	89.8%	54.3%	85.8%
2013	89.0%	89.1%	87.8%	88.7%	51.5%	84.9%
2014	90.1%	91.5%	90.9%	90.5%	64.1%	88.5%
2015	89.8%	92.5%	89.4%	90.1%	67.7%	88.7%
2016	89.2%	90.7%	88.7%	89.3%	67.8%	88.0%
2017	89.6%	86.7%	88.8%	89.0%	67.5%	87.7%
2018	88.0%	77.8%	87.7%	86.3%	59.9%	84.8%
2019	87.5%	78.2%	88.2%	86.2%	52.4%	84.2%
2009-2019 % Change	-2.3%	-16.4%	-1.7%	-4.4%	-13.0%	-2.7%

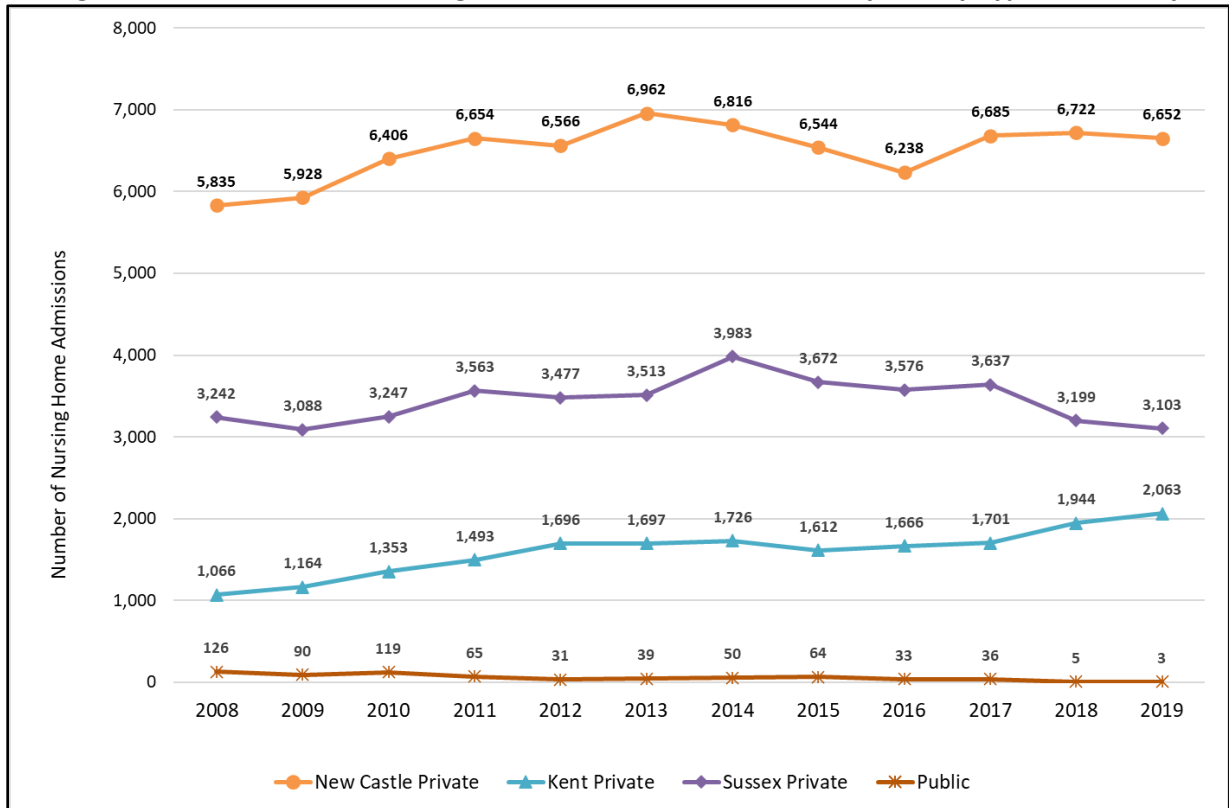
ADMISSIONS

As shown in Table 4 and Figure 3, annual admissions to private facilities in New Castle remained fairly stable since 2010, while Kent County private nursing home admissions gradually increased from 2009-2019. From 2009-2019, Sussex County private nursing home admissions fluctuated annually while remaining between 3,000 and 4,000. Conversely, annual admissions to public nursing homes have fluctuated erratically. Over the past decade, public nursing home admissions peaked in 2010. As public facilities closed and/or reduced their number of available beds, admissions to public nursing homes declined. In 2019, just three patients were admitted to Delaware's two public nursing homes.

Table 4: Total Number of Nursing Home Admissions, 2009-2019, by Facility Type and County

Year	Private Facilities				Public Facilities	All Facilities
	New Castle County	Kent County	Sussex County	Total Private		
2009	5,928	1,164	3,088	10,180	90	10,270
2010	6,406	1,353	3,247	11,006	119	11,125
2011	6,654	1,493	3,563	11,710	65	11,775
2012	6,566	1,696	3,477	11,739	31	11,770
2013	6,962	1,697	3,513	12,172	39	12,211
2014	6,816	1,726	3,983	12,525	50	12,575
2015	6,544	1,612	3,672	11,828	64	11,892
2016	6,238	1,666	3,576	11,480	33	11,513
2017	6,685	1,701	3,637	12,023	36	12,059
2018	6,722	1,944	3,199	11,865	5	11,870
2019	6,652	2,063	3,103	11,818	3	11,821
2009-2019 % Change	12.2%	77.2%	0.5%	16.1%	-96.7%	15.1%

Figure 3: Total Number of Nursing Home Admissions, 2009-2019, by Facility Type and County



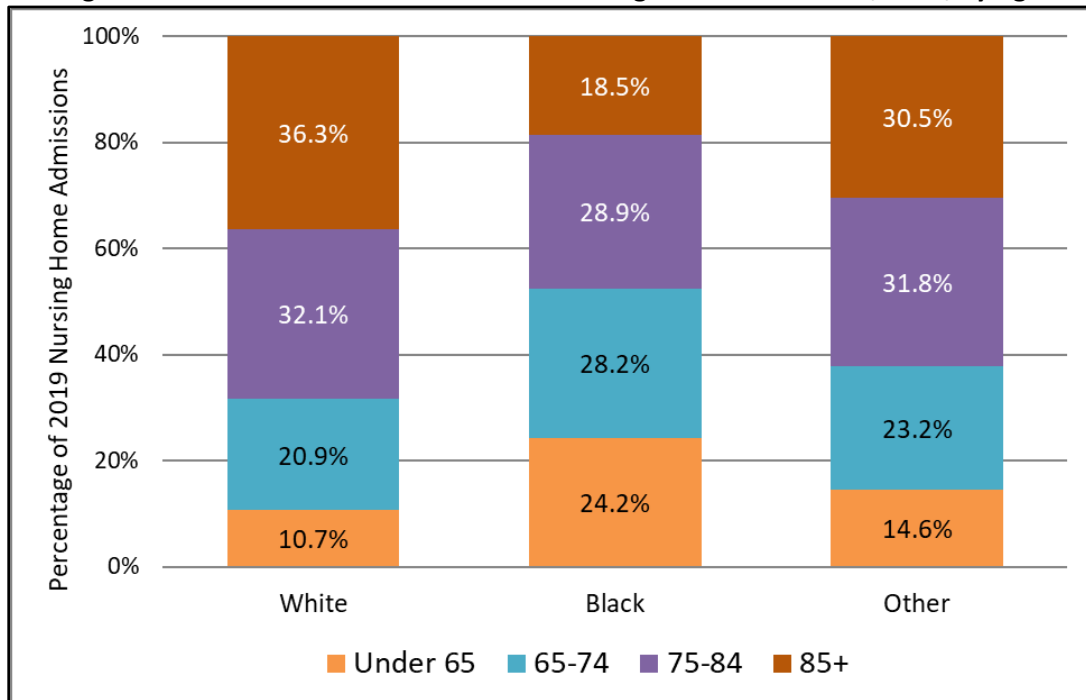
White patients accounted for 78.6% of all 2019 Delaware nursing home admissions (Table 5). Black patients and patients of other races accounted for 19.1% and 2.0% of 2019 nursing home admissions, respectively. This racial breakdown of nursing home admissions is in line with Delaware’s demographic distribution. Patients 75-84 years and 85 years or older accounted for 31.5% and 32.7%, respectively, of 2019 Delaware nursing home admissions. Twenty-two percent of 2019 nursing home admissions were individuals ages 65-74. The youngest category of nursing home patients – those under age 65 – accounted for 13.5% of 2019 admissions. (Refer to Appendix A for further information on Delaware nursing home admissions and discharges among the Under 65 population.)

Table 5: Percentage of Total Delaware Nursing Home Admissions, by Race and Age, 2019

	Age Groups				Total Admissions (by Race)
	Under 65	65-74	75-84	85+	
White Admissions (N=9,287)	10.7%	20.9%	32.1%	36.3%	78.6%
Black Admissions (N=2,301)	24.2%	28.2%	28.9%	18.5%	19.5%
Other Admissions (N=233)	14.6%	23.2%	31.8%	30.5%	2.0%
Total Admissions (by Age) (N=11,821)	13.5%	22.4%	31.5%	32.7%	100.0%

Although Black patients and patients of other races comprised a combined 21.5% of all 2019 nursing home admissions, they represent overall younger populations compared to White patients admitted to nursing homes. As shown in Figure 4, in 2019, just 10.7% of all White nursing home admissions were under the age of 65. Relative to this, individuals under the age of 65 accounted for 24.2% of Black admissions. Among Black patients admitted to Delaware nursing homes in 2019, 52.4% were age 74 and under; in comparison, 31.6% of White admissions were under the age of 74. Thus, while White patients accounted for substantially more nursing home admissions overall, Black patients and patients of other races tended to be younger when they admitted to Delaware nursing homes.

Figure 4: Racial Breakdown of Delaware Nursing Home Admissions, 2019, by Age



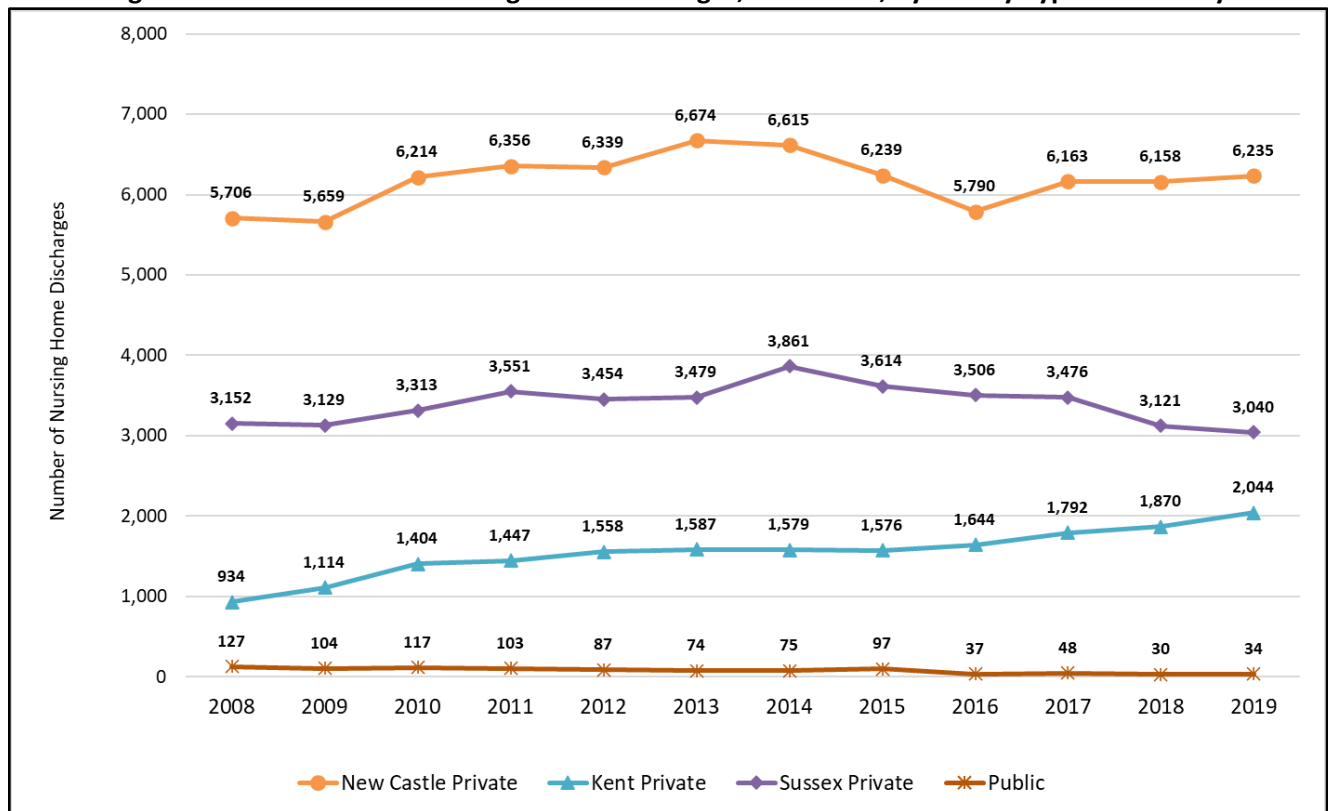
DISCHARGES

In 2019, Delaware nursing homes discharged 11,353 patients (Table 6). From 2009 to 2013, discharges from private facilities increased across all three counties; beginning in 2014 and 2015, annual discharges from private facilities began to decline in New Castle County and Sussex County, respectively. Annual private nursing home discharges have gradually increased in Kent County from 2009 to 2019. Annual discharges from public nursing homes substantially declined from 2009 to 2019. As public facilities closed and/or reduced their number of available beds, discharges from public nursing homes drastically declined.

Table 6: Total Number of Nursing Home Discharges, 2009-2019, by Facility Type and County

Year	Private Facilities				Public Facilities	All Facilities
	New Castle County	Kent County	Sussex County	Total Private		
2009	5,659	1,114	3,129	9,902	104	10,006
2010	6,214	1,404	3,313	10,931	117	11,048
2011	6,356	1,447	3,551	11,354	103	11,457
2012	6,339	1,558	3,454	11,330	87	11,417
2013	6,674	1,587	3,479	11,740	74	11,814
2014	6,615	1,579	3,861	12,055	75	12,130
2015	6,239	1,576	3,614	11,429	97	11,526
2016	5,790	1,644	3,506	10,940	37	10,977
2017	6,163	1,792	3,476	11,431	48	11,479
2018	6,158	1,870	3,121	11,149	30	11,179
2019	6,235	2,044	3,040	11,319	34	11,353
2009-2019 % Change	9.3%	118.8%	-3.6%	15.6%	-73.2%	14.5%

Figure 5: Total Number of Nursing Home Discharges, 2009-2019, by Facility Type and County



As in previous years, in 2019, discharge destination varied greatly by facility type (Table 7). A larger percentage of patients discharged from private facilities returned home compared to patients discharged from public facilities (61.5% vs. 8.8%, respectively). Compared to private nursing home discharges, a larger percentage of patients discharged from public facilities were discharged due to death (61.8% vs. 10.5%, respectively).

Table 7: Percentage of 2019 Nursing Home Discharges, by Discharge Destination

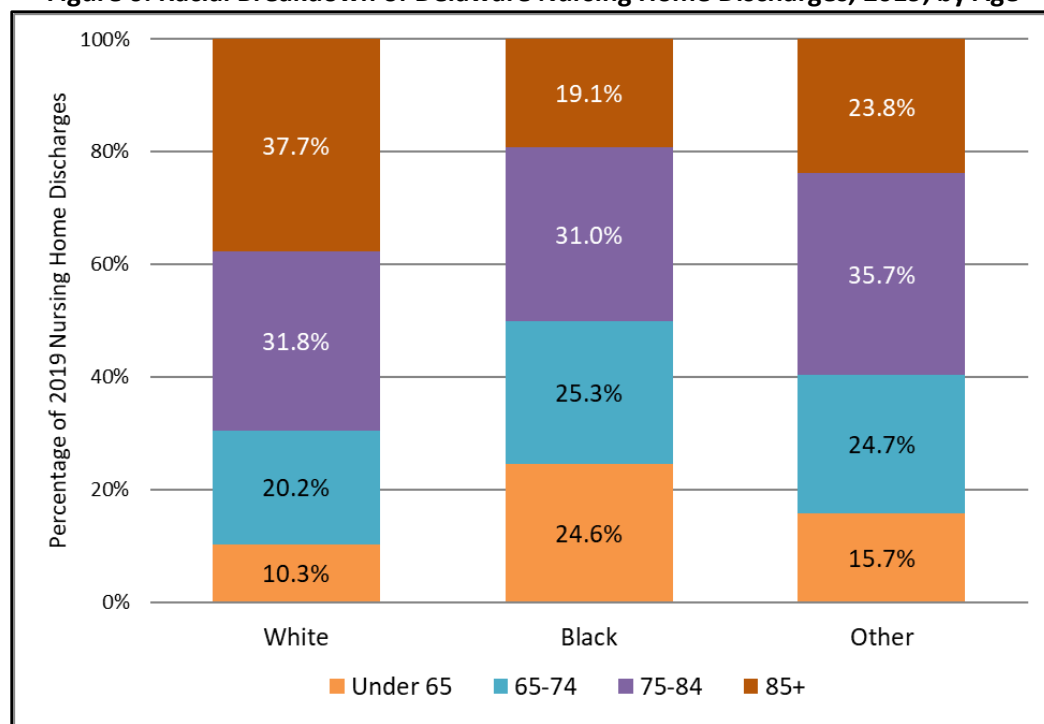
	Discharge Destination						
Facility Type	Home	Hospital	Assisted Living	Private LTCF	State Owned LTCF	Death	Other
Private (N=11,319)	61.5%	19.7%	4.0%	2.7%	0.5%	10.5%	1.1%
Public (N=34)	8.8%	29.4%	0.0%	0.0%	0.0%	61.8%	0.0%
All facilities (N=11,353)	61.3%	19.7%	4.0%	2.7%	0.4%	10.7%	1.1%

Discharge statistics mirror admission statistics in terms of patient race and age (Table 8). White patients accounted for 79.2% of Delaware nursing home discharges in 2019. Black patients and patients of other races accounted for 18.7% and 2.1% of 2019 nursing home discharges, respectively. Individuals 75-84 years and 85 years+ accounted for 31.7% and 33.9% of Delaware nursing home discharges, respectively. One-fifth (21.3%) of 2019 nursing home discharges were individuals ages 65-74. The youngest category of nursing home patients – those under age 65 – accounted for the remaining 13.1% of 2019 discharges.

As with nursing home admissions, Black patients and patients of other races discharged from Delaware nursing homes represent and overall younger population (Figure 6). Thus, while White patients accounted for substantially more nursing home discharges overall, Black patients and patients of other races discharged from Delaware nursing homes represent a younger population in general.

Table 8: Percentage of Total Delaware Nursing Home Discharges, by Race and Age, 2019

	Age Groups				Total Discharges (by Race)
	Under 65	65-74	75-84	85+	
White Discharges (N=8,994)	10.3%	20.2%	31.8%	37.7%	79.2%
Black Discharges (N=2,124)	24.6%	25.3%	31.0%	19.1%	18.7%
Other Discharges (N=235)	15.7%	24.7%	35.7%	23.8%	2.1%
Total Discharges (by Age) (N=11,353)	13.1%	21.3%	31.7%	33.9%	100.0%

Figure 6: Racial Breakdown of Delaware Nursing Home Discharges, 2019, by Age

SOURCE OF PAYMENT

Patient payment source for nursing home care varied by type of facility (Table 9). In 2019, the majority of both private and public nursing home residents used Medicaid as a source of payment (private: 63.1%, public: 86.2%). Fifteen percent of private Delaware nursing home patients used Medicare as a source of payment compared to just 0.8% of public nursing home patients. Sixteen percent of private nursing home residents and 8.1 percent of public nursing home patients self-paid for their care. A different payment source was utilized by 5.7% of private nursing home patients and 4.9% of public nursing home patients.

Table 9: Percentage of Delaware Nursing Home Patients by Payment Source and Nursing Home Status, 2009-2019

Source of Payment	2009	2010	2011	2012	2013	2014	2015	2016	2017	2018	2019
Medicaid											
Private NH Patients	53.0%	53.3%	53.0%	55.3%	56.4%	57.0%	59.2%	59.7%	60.1%	60.9%	63.1%
Public NH Patients	74.2%	80.7%	84.0%	81.2%	81.9%	83.4%	88.0%	87.2%	84.5%	85.6%	86.2%
Total NH Patients	54.9%	55.7%	56.0%	57.1%	58.0%	58.4%	60.6%	61.0%	61.2%	61.9%	63.9%
Medicare											
Private NH Patients	17.0%	18.1%	19.0%	18.8%	19.0%	19.0%	18.2%	17.6%	17.3%	16.5%	15.2%
Public NH Patients	3.8%	0.5%	0.0%	0.3%	0.5%	0.5%	0.4%	1.1%	0.4%	0.7%	0.8%
Total NH Patients	16.0%	16.6%	17.0%	17.4%	17.8%	18.0%	17.3%	16.9%	16.5%	15.9%	14.7%
Self-Pay											
Private NH Patients	23.7%	22.5%	22.0%	21.0%	20.0%	19.0%	18.6%	17.8%	16.9%	16.7%	16.0%
Public NH Patients	17.3%	16.3%	13.0%	13.1%	11.7%	10.9%	8.5%	3.6%	12.4%	10.1%	8.1%
Total NH Patients	23.1%	21.9%	21.0%	20.4%	19.5%	18.6%	18.1%	17.4%	16.7%	16.4%	15.7%
Other											
Private NH Patients	6.1%	6.1%	6.0%	5.0%	4.6%	5.0%	4.1%	4.9%	5.7%	5.9%	5.7%
Public NH Patients	4.7%	2.4%	3.0%	5.4%	5.9%	5.2%	3.1%	3.6%	2.7%	3.6%	4.9%
Total NH Patients	6.0%	5.8%	6.0%	5.0%	4.6%	5.0%	4.0%	4.8%	5.5%	5.8%	5.7%

PART 2: 2019 FACILITY-LEVEL NURSING HOME UTILIZATION STATISTICS

Table 10
Total Billable Patient Days by Facility, 2019

Nursing Home	2019 Patient Days	Nursing Home	2019 Patient Days
NCC (Private)		Kent County (Private)	
Brackenville Center	37,117	Cadia Rehab Capitol	41,369
Brandywine Nursing & Rehab	59,832	Courtland Manor	20,567
Cadia Rehab Broadmeadow	40,934	Delaware Veterans Home	25,718
Cadia Rehab Pike Creek	41,676	Pinnacle Rehab & Health	51,563
Cadia Rehab Silverside	41,020	Silver Lake Center	39,722
Churchman Village	33,359	The Center at Eden Hill	18,806
Forwood Manor	13,989	Westminster Village	20,412
Foulk Manor North	13,042	Kent County (Private) Total	218,157
Foulk Manor South	12,172		
Gilpin Hall	33,876	Sussex County (Private)	
Hillside Center	35,426	Atlantic Shores	60,921
Jeanne Jugan Residence	14,130	Cadia Rehab Renaissance	43,122
Kentmere Rehab & Healthcare	35,940	Country Rest Home	18,397
Kutz Rehab & Nursing	30,709	Delmar Nursing & Rehab	31,998
ManorCare Pike Creek	54,595	Harbor Health Care	56,095
ManorCare Wilmington	45,933	Harrison Senior Living	47,416
Millcroft	25,394	Lofland Park Center	37,485
New Castle Health & Rehab	33,524	Milford Center	42,607
Newark Manor	21,247	Seaford Center	37,737
Parkview Nursing & Rehab	50,260	The Moorings at Lewes	12,534
Regal Heights Healthcare & Rehab	61,405	WBC Manor House	18,516
Regency Healthcare & Rehab	34,376	Sussex County (Private) Total	406,828
Shipley Manor Health Care	16,807		
Stonegates	13,899	Total Private Facilities	1,460,830
Weston Senior Living Center	5,374		
WBC Cokesbury Village	14,908	Public Facilities	
WBC Country House	14,901	DE Hosp for Chronically Ill	37,557
NCC (Private) Total	835,845	Governor Bacon Health Center	16,582
		Public Total	54,139
		Total All Facilities	1,514,969

Notes: NCC=New Castle County.

Table 11
Weighted Occupancy Rates by Facility, Type, and County, 2019

Nursing Home	Billable Patient Days 2019	Number of Licensed Beds 2019	Total Days Facility Open 2019	Licensed Bed Days 2019	Weighted Occupancy Rate 2019
NCC (Private)					
Brackenville Center	37,117	104	365	37,960	97.8%
Brandywine Nursing & Rehab	59,832	169	365	61,685	97.0%
Cadia Rehab Broadmeadow	40,934	120	365	43,800	93.5%
Cadia Rehab Pike Creek	41,676	130	365	47,450	87.8%
Cadia Rehab Silverside	41,020	116	365	42,340	96.9%
Churchman Village	33,359	101	365	36,865	90.5%
Forwood Manor	13,989	72	365	26,280	53.2%
Foult Manor North	13,042	46	365	16,790	77.7%
Foult Manor South	12,172	46	365	16,790	72.5%
Gilpin Hall	33,876	96	365	35,040	96.7%
Hillside Center	35,426	106	365	38,690	91.6%
Jeanne Jugan Residence	14,130	40	365	14,600	96.8%
Kentmere Rehab & Healthcare	35,940	104	365	37,960	94.7%
Kutz Rehab & Nursing	30,709	90	365	32,850	93.5%
ManorCare Pike Creek	54,595	177	365	64,605	84.5%
ManorCare Wilmington	45,933	138	365	50,370	91.2%
Millcroft	25,394	110	365	40,150	63.2%
New Castle Health & Rehab	33,524	120	365	43,800	76.5%
Newark Manor	21,247	67	365	24,455	86.9%
Parkview Nursing & Rehab	50,260	150	365	54,750	91.8%
Regal Heights Healthcare & Rehab	61,405	172	365	62,780	97.8%
Regency Healthcare & Rehab	34,376	100	365	36,500	94.2%
Shipley Manor Health Care	16,807	82	365	29,930	56.2%
Stonegates	13,899	49	365	17,885	77.7%
Weston Senior Living Center	5,374	19	365	6,935	77.5%
WBC Cokesbury Village	14,908	45	365	16,425	90.8%
WBC Country House	14,901	48	365	17,520	85.1%
NCC (Private) Total	835,845	2,617	365	955,205	88.0%

Table 11
(Continued)
Weighted Occupancy Rates by Facility, Type, and County, 2019

Nursing Home	Billable Patient Days 2019	Number of Licensed Beds 2019	Total Days Facility Open 2019	Licensed Bed Days 2019	Weighted Occupancy Rate 2019
Kent County (Private)					
Cadia Rehab Capitol	41,369	120	365	43,800	94.4%
Courtland Manor	20,567	70	365	25,550	80.5%
Delaware Veterans Home	25,718	150	365	54,750	47.0%
Pinnacle Rehab & Health	51,563	151	365	55,115	93.6%
Silver Lake Center	39,722	120	365	43,800	90.7%
The Center at Eden Hill	18,806	80	243	29,200	64.4%
Westminster Village	20,412	73	365	26,645	76.6%
Kent County (Private)	218,157	764	365	278,860	78.2%
Sussex County (Private)					
Atlantic Shores	60,921	181	365	66,065	92.2%
Cadia Rehab Renaissance	43,122	130	365	47,450	90.9%
Country Rest Home	18,397	56	365	20,440	90.0%
Delmar Nursing & Rehab	31,998	109	365	39,785	80.4%
Harbor Health Care	56,095	179	365	65,335	85.9%
Harrison Senior Living	47,416	139	365	50,735	93.5%
Lofland Park Center	37,485	110	365	40,150	93.4%
Milford Center	42,607	136	365	49,640	85.8%
Seaford Center	37,737	124	365	45,260	83.4%
The Moorings at Lewes	12,534	40	365	14,600	85.8%
WBC Manor House	18,516	60	365	21,900	84.5%
Sussex County (Private)	406,828	1,264	365	461,360	88.2%
Total Private Facilities	1,460,830	4,645	365	1,695,425	86.2%
Public Facilities					
DE Hosp for Chronically Ill	37,557	205	365	74,825	50.2%
Governor Bacon Health	16,582	78	365	28,470	58.2%
Public Total	54,139	283	365	103,295	52.4%
Total All Facilities	1,514,969	4,928	365	1,798,720	84.2%

Notes: NCC=New Castle County. Weighted occupancy rates for individual facilities are calculated as the ratio of Billable Patient Days and Licensed Bed Days. Licensed Bed Days are calculated as (Number of Licensed beds (as of December of the reporting year))*(Total days the facility was open during the reporting year). Weighted occupancy rates at county, facility type, and state levels are calculated as the ratio of Billable Patient Days (sum of each facility in the category) and Licensed Bed Days (sum of each facility in the category).

Table 12
Patient Source of Payment by Facility, Type, and County, 2019

Nursing Home	Medicaid	Medicare	Self-Pay	Other*	Total
NCC (Private Facilities)					
Brackenville Center	60.9%	13.5%	22.9%	2.7%	100%
Brandywine Nursing & Rehab	84.2%	7.3%	8.3%	0.2%	100%
Cadia Rehab Broadmeadow	61.3%	22.1%	9.5%	7.0%	100%
Cadia Rehab Pike Creek	48.3%	38.7%	6.1%	6.9%	100%
Cadia Rehab Silverside	48.5%	22.3%	11.2%	18.0%	100%
Churchman Village	57.9%	23.9%	10.8%	7.5%	100%
Forwood Manor	41.4%	33.7%	24.7%	0.2%	100%
Foulk Manor North	35.0%	0.0%	65.0%	0.0%	100%
Foulk Manor South	0.0%	0.0%	100.0%	0.0%	100%
Gilpin Hall	88.8%	3.8%	3.1%	4.3%	100%
Hillside Center	82.8%	10.8%	0.8%	5.6%	100%
Jeanne Jugan Residence	81.3%	0.0%	18.8%	0.0%	100%
Kentmere Rehab & Healthcare	63.1%	16.6%	13.7%	6.6%	100%
Kutz Rehab & Nursing	65.0%	8.6%	26.4%	0.0%	100%
ManorCare Pike Creek	50.2%	27.2%	6.8%	15.8%	100%
ManorCare Wilmington	64.8%	27.4%	5.5%	2.3%	100%
Millcroft	39.1%	18.1%	40.2%	2.6%	100%
New Castle Health & Rehab	79.4%	15.0%	2.8%	2.9%	100%
Newark Manor	82.7%	0.0%	17.3%	0.0%	100%
Parkview Nursing & Rehab	87.8%	4.4%	5.2%	2.5%	100%
Regal Heights Healthcare & Rehab	66.4%	3.2%	14.4%	16.1%	100%
Regency Healthcare & Rehab	80.2%	8.9%	8.5%	2.4%	100%
Shipley Manor Health Care	60.5%	20.5%	14.1%	5.0%	100%
Stonegates	0.0%	6.1%	93.9%	0.0%	100%
Weston Senior Living Center	60.0%	24.2%	15.8%	0.0%	100%
WBC Cokesbury Village	0.0%	9.1%	86.3%	4.6%	100%
WBC Country House	0.0%	5.9%	89.0%	5.1%	100%
NCC (Private) Total	62.1%	14.7%	17.4%	5.8%	100%

Table 12
(Continued)
Patient Source of Payment, by Facility, Type, and County, 2019

Nursing Home	Medicaid	Medicare	Self-Pay	Other*	Total
Kent County (Private)					
Cadia Rehab Capitol	79.5%	11.1%	6.3%	3.1%	100.0%
Courtland Manor	82.8%	0.6%	16.1%	0.5%	100.0%
Delaware Veterans Home	38.2%	1.1%	35.3%	25.4%	100.0%
Pinnacle Rehab & Health	74.7%	16.0%	5.4%	3.9%	100.0%
Silver Lake Center	81.6%	9.0%	4.1%	5.4%	100.0%
The Center at Eden Hill	0.3%	92.2%	1.0%	6.5%	100.0%
Westminster Village	41.1%	26.8%	31.0%	1.2%	100.0%
Kent County (Private) Total	63.9%	18.0%	11.9%	6.2%	100.0%
Sussex County (Private)					
Atlantic Shores	66.4%	25.8%	4.1%	3.7%	100.0%
Cadia Rehab Renaissance	64.3%	24.9%	4.5%	6.3%	100.0%
Country Rest Home	0.0%	0.0%	100.0%	0.0%	100.0%
Delmar Nursing & Rehab	85.5%	8.9%	3.3%	2.3%	100.0%
Harbor Health Care	73.7%	8.4%	9.2%	8.7%	100.0%
Harrison Senior Living	65.9%	12.1%	15.1%	6.9%	100.0%
Lofland Park Center	72.8%	15.1%	4.3%	7.8%	100.0%
Milford Center	77.5%	12.0%	4.2%	6.3%	100.0%
Seaford Center	79.9%	12.9%	2.9%	4.4%	100.0%
The Moorings at Lewes	6.0%	26.7%	65.3%	1.9%	100.0%
WBC Manor House	20.7%	9.5%	66.1%	3.8%	100.0%
Sussex County (Private) Total	64.6%	14.9%	15.2%	5.4%	100.0%
Total Private Facilities	63.1%	15.2%	16.0%	5.7%	100.0%
Public Facilities					
DE Hosp for Chronically Ill	86.2%	1.2%	8.6%	4.0%	100.0%
Governor Bacon Health Center	86.3%	0.0%	6.8%	6.9%	100.0%
Public Total	86.2%	0.8%	8.1%	4.9%	100.0%
Total All Facilities	63.9%	14.7%	15.7%	5.7%	100.0%

Notes: The "other" payment category includes charitable pay, partial pay, private insurance, Veterans benefits, out-of-state Medicaid, and, in some cases, patients for whom medical status was pending at admissions. Percentages are based on end of month reports on the number of patients by source of payment.

Table 13
Number of Admissions by Age, Gender, County and Facility, 2019

Nursing Home	<65 Male	< 65 Female	65-74 Male	65-74 Female	75-84 Male	75-84 Female	85+ Male	85+ Female	Total Male	Total Female	Total M+F
NCC (Private)											
Brackenville Center	11	16	20	38	35	45	33	61	99	160	259
Brandywine Nursing & Rehab	10	18	50	27	26	57	29	77	115	179	294
Cadia Rehab Broadmeadow	17	35	46	76	62	101	42	86	167	298	465
Cadia Rehab Pike Creek	18	35	50	68	84	125	77	132	229	360	589
Cadia Rehab Silverside	42	33	51	79	69	124	44	129	206	365	571
Churchman Village	26	31	38	40	59	73	57	63	180	207	387
Forwood Manor	0	0	13	3	6	33	19	113	38	149	187
Foulk Manor North	1	1	2	2	0	6	8	18	11	27	38
Foulk Manor South	0	1	0	4	0	3	10	13	10	21	31
Gilpin Hall	0	1	1	4	6	11	4	10	11	26	37
Hillside Center	53	38	50	38	40	35	22	21	165	132	297
Jeanne Jugan Residence	0	0	0	0	0	5	1	5	1	10	11
Kentmere Rehab &	3	7	13	40	47	92	44	122	107	261	368
Kutz Rehab & Nursing	0	2	6	5	6	19	16	33	28	59	87
ManorCare Pike Creek	132	87	116	155	147	210	107	197	502	649	1151
ManorCare Wilmington	55	58	72	101	70	93	47	93	244	345	589
Millcroft	3	0	6	5	19	25	23	62	51	92	143
New Castle Health & Rehab	29	34	36	79	12	37	12	14	89	164	253
Newark Manor	0	0	0	1	0	17	3	5	3	23	26
Parkview Nursing & Rehab	8	20	16	30	14	16	9	26	47	92	139
Regal Heights Healthcare &	7	12	19	18	16	24	26	36	68	90	158
Regency Healthcare & Rehab	10	8	8	35	28	22	17	24	63	89	152
Shipley Manor Health Care	0	0	1	6	5	33	29	60	35	99	134
Stonegates	0	0	1	2	5	10	20	23	26	35	61
Weston Senior Living Center	0	0	0	0	24	0	2	8	26	8	34
WBC Cokesbury Village	0	0	0	0	4	18	23	36	27	54	81
WBC Country House	0	0	1	3	17	18	25	46	43	67	110
NCC (Private) Total	425	437	616	859	801	1,252	749	1,513	2,591	4,061	6,652

Table 13
(Continued)
Number of Admissions by Age, Gender, County and Facility, 2019

Nursing Home	<65 Male	< 65 Female	65-74 Male	65-74 Female	75-84 Male	75-84 Female	85+ Male	85+ Female	Total Male	Total Female	Total M+F
Kent County (Private)											
Cadia Rehab Capitol	20	30	28	32	29	42	21	52	98	156	254
Courtland Manor	3	2	4	2	3	9	1	15	11	28	39
Delaware Veterans Home	0	0	6	0	11	0	29	1	46	1	47
Pinnacle Rehab & Health	43	51	65	47	47	58	26	45	181	201	382
Silver Lake Center	57	61	40	77	32	72	24	43	153	253	406
The Center at Eden Hill	22	32	61	103	118	147	70	134	271	416	687
Westminster Village	0	4	0	4	16	48	68	108	84	164	248
Kent County (Private) Total	145	180	204	265	256	376	239	398	844	1,219	2,063
Sussex County (Private)											
Atlantic Shores	37	51	54	46	78	92	67	87	236	276	512
Cadia Rehab Renaissance	20	25	72	92	102	131	58	136	252	384	636
Country Rest Home	4	1	4	5	15	23	18	36	41	65	106
Delmar Nursing & Rehab	9	9	15	13	18	28	14	19	56	69	125
Harbor Health Care	2	5	24	22	22	40	26	68	74	135	209
Harrison Senior Living	9	8	41	32	61	62	33	73	144	175	319
Lofland Park Center	31	18	33	34	55	71	30	46	149	169	318
Milford Center	56	40	39	45	32	53	20	44	147	182	329
Seaford Center	30	47	48	54	35	42	12	18	125	161	286
The Moorings at Lewes	0	0	5	6	16	27	35	56	56	89	145
WBC Manor House	0	0	3	11	8	27	21	48	32	86	118
Sussex County (Private) Total	198	204	338	360	442	596	334	631	1,312	1,791	3,103
Total Private Facilities	768	821	1,158	1,484	1,499	2,224	1,322	2,542	4,747	7,071	11,818
Public Facilities											
DE Hosp for Chronically Ill	0	1	1	0	0	1	0	0	1	2	3
Governor Bacon Health Center	0	0	0	0	0	0	0	0	0	0	0
Public Total	0	1	1	0	0	1	0	0	1	2	3
Total All Facilities	768	822	1,159	1,484	1,499	2,225	1,322	2,542	4,478	7,073	11,821

Notes: NCC=New Castle County.

Table 13.1
Percentage of Admissions by Age, County and Facility, 2019

Nursing Home	Under 65	65-74	75-84	85+	Total
NCC (Private)					
Brackenville Center	10.4%	22.4%	30.9%	36.3%	100%
Brandywine Nursing & Rehab	9.5%	26.2%	28.2%	36.1%	100%
Cadia Rehab Broadmeadow	11.2%	26.2%	35.1%	27.5%	100%
Cadia Rehab Pike Creek	9.0%	20.0%	35.5%	35.5%	100%
Cadia Rehab Silverside	13.1%	22.8%	33.8%	30.3%	100%
Churchman Village	14.7%	20.2%	34.1%	31.0%	100%
Forwood Manor	0.0%	8.6%	20.9%	70.6%	100%
Foulk Manor North	5.3%	10.5%	15.8%	68.4%	100%
Foulk Manor South	3.2%	12.9%	9.7%	74.2%	100%
Gilpin Hall	2.7%	13.5%	45.9%	37.8%	100%
Hillside Center	30.6%	29.6%	25.3%	14.5%	100%
Jeanne Jugan Residence	0.0%	0.0%	45.5%	54.5%	100%
Kentmere Rehab & Healthcare	2.7%	14.4%	37.8%	45.1%	100%
Kutz Rehab & Nursing	2.3%	12.6%	28.7%	56.3%	100%
ManorCare Pike Creek	19.0%	23.5%	31.0%	26.4%	100%
ManorCare Wilmington	19.2%	29.4%	27.7%	23.8%	100%
Millcroft	2.1%	7.7%	30.8%	59.4%	100%
New Castle Health & Rehab	24.9%	45.5%	19.4%	10.3%	100%
Newark Manor	0.0%	3.8%	65.4%	30.8%	100%
Parkview Nursing & Rehab	20.1%	33.1%	21.6%	25.2%	100%
Regal Heights Healthcare & Rehab	12.0%	23.4%	25.3%	39.2%	100%
Regency Healthcare & Rehab	11.8%	28.3%	32.9%	27.0%	100%
Shipley Manor Health Care	0.0%	5.2%	28.4%	66.4%	100%
Stonegates	0.0%	4.9%	24.6%	70.5%	100%
Weston Senior Living Center	0.0%	0.0%	70.6%	29.4%	100%
WBC Cokesbury Village	0.0%	0.0%	27.2%	72.8%	100%
WBC Country House	0.0%	3.6%	31.8%	64.5%	100%
NCC (Private) Total	13.0%	22.2%	30.9%	34.0%	100%

Table 13.1
(Continued)
Percentage of Admissions by Age, County and Facility, 2019

Nursing Home	Under 65	65-74	75-84	85+	Total
Kent County (Private)					
Cadia Rehab Capitol	19.7%	23.6%	28.0%	28.7%	100.0%
Courtland Manor	12.8%	15.4%	30.8%	41.0%	100.0%
Delaware Veterans Home	0.0%	12.8%	23.4%	63.8%	100.0%
Pinnacle Rehab & Health	24.6%	29.3%	27.5%	18.6%	100.0%
Silver Lake Center	29.1%	28.8%	25.6%	16.5%	100.0%
The Center at Eden Hill	7.9%	23.9%	38.6%	29.7%	100.0%
Westminster Village	1.6%	1.6%	25.8%	71.0%	100.0%
Kent County (Private) Total	15.8%	22.7%	30.6%	30.9%	100.0%
Sussex County (Private)					
Atlantic Shores	17.2%	19.5%	33.2%	30.1%	100.0%
Cadia Rehab Renaissance	7.1%	25.8%	36.6%	30.5%	100.0%
Country Rest Home	4.7%	8.5%	35.8%	50.9%	100.0%
Delmar Nursing & Rehab	14.4%	22.4%	36.8%	26.4%	100.0%
Harbor Health Care	3.3%	22.0%	29.7%	45.0%	100.0%
Harrison Senior Living	5.3%	22.9%	38.6%	33.2%	100.0%
Lofland Park Center	15.4%	21.1%	39.6%	23.9%	100.0%
Milford Center	29.2%	25.5%	25.8%	19.5%	100.0%
Seaford Center	26.9%	35.7%	26.9%	10.5%	100.0%
The Moorings at Lewes	0.0%	7.6%	29.7%	62.8%	100.0%
WBC Manor House	0.0%	11.9%	29.7%	58.5%	100.0%
Sussex County (Private) Total	13.0%	22.5%	33.5%	31.1%	100.0%
Total Private Facilities	13.4%	22.4%	31.5%	32.7%	100.0%
Public Facilities					
DE Hosp for Chronically Ill	33.3%	33.3%	33.3%	0.0%	100.0%
Governor Bacon Health Center	N/A	N/A	N/A	N/A	100.0%
Public Total	33.3%	33.3%	33.3%	0.0%	100.0%
Total All Facilities	13.5%	22.4%	31.5%	32.7%	100.0%

Note: NCC=New Castle County.

Table 13.2
Percentage of Admissions by Gender, County and Facility, 2019

Nursing Home	Male	Female	Nursing Home	Male	Female
NCC (Private)			Kent County (Private)		
Brackenville Center	38.2%	61.8%	Cadia Rehab Capitol	38.6%	61.4%
Brandywine Nursing & Rehab	39.1%	60.9%	Courtland Manor	28.2%	71.8%
Cadia Rehab Broadmeadow	35.9%	64.1%	Delaware Veterans Home	97.9%	2.1%
Cadia Rehab Pike Creek	38.9%	61.1%	Pinnacle Rehab & Health	47.4%	52.6%
Cadia Rehab Silverside	36.1%	63.9%	Silver Lake Center	37.7%	62.3%
Churchman Village	46.5%	53.5%	The Center at Eden Hill	39.4%	60.6%
Forwood Manor	20.3%	79.7%	Westminster Village	33.9%	66.1%
Foulk Manor North	28.9%	71.1%	Kent County (Private) Total	40.9%	59.1%
Foulk Manor South	32.3%	67.7%			
Gilpin Hall	29.7%	70.3%	Sussex County (Private)		
Hillside Center	55.6%	44.4%	Atlantic Shores	46.1%	53.9%
Jeanne Jugan Residence	9.1%	90.9%	Cadia Rehab Renaissance	39.6%	60.4%
Kentmere Rehab & Healthcare	29.1%	70.9%	Country Rest Home	38.7%	61.3%
Kutz Rehab & Nursing	32.2%	67.8%	Delmar Nursing & Rehab	44.8%	55.2%
ManorCare Pike Creek	43.6%	56.4%	Harbor Health Care	35.4%	64.6%
ManorCare Wilmington	41.4%	58.6%	Harrison Senior Living	45.1%	54.9%
Millcroft	35.7%	64.3%	Lofland Park Center	46.9%	53.1%
New Castle Health & Rehab	35.2%	64.8%	Milford Center	44.7%	55.3%
Newark Manor	11.5%	88.5%	Seaford Center	43.7%	56.3%
Parkview Nursing & Rehab	33.8%	66.2%	The Moorings at Lewes	38.6%	61.4%
Regal Heights Healthcare & Rehab	43.0%	57.0%	WBC Manor House	27.1%	72.9%
Regency Healthcare & Rehab	41.4%	58.6%	Sussex County (Private) Total	42.3%	57.7%
Shipley Manor Health Care	26.1%	73.9%			
Stonegates	42.6%	57.4%	Total Private Facilities	40.2%	59.8%
Weston Senior Living Center	76.5%	23.5%			
WBC Cokesbury Village	33.3%	66.7%	Public Facilities		
WBC Country House	39.1%	60.9%	DE Hosp for Chronically Ill	33.3%	66.7%
NCC (Private) Total	39.0%	61.0%	Governor Bacon Health Center	N/A	N/A
			Public Total	33.3%	66.7%
			Total All Facilities	40.2%	59.8%

Table 13.3
Number of White Admissions by Age, Gender, County and Facility, 2019

Nursing Home	<65 Male	< 65 Female	65-74 Male	65-74 Female	75-84 Male	75-84 Female	85+ Male	85+ Female	Total Male	Total Female	Total M+F
NCC (Private)											
Brackenville Center	7	9	16	35	26	37	28	54	77	135	212
Brandywine Nursing & Rehab	3	13	35	20	17	40	25	68	80	141	221
Cadia Rehab Broadmeadow	14	25	37	65	52	86	40	73	143	249	392
Cadia Rehab Pike Creek	10	19	41	55	73	116	72	121	196	311	507
Cadia Rehab Silverside	21	17	32	47	54	97	40	103	147	264	411
Churchman Village	21	14	26	31	40	60	47	47	134	152	286
Forwood Manor	0	0	13	3	6	32	19	110	38	145	183
Foulk Manor North	1	1	2	1	0	6	8	16	11	24	35
Foulk Manor South	0	1	0	3	0	3	10	9	10	16	26
Gilpin Hall	0	1	1	2	3	7	3	7	7	17	24
Hillside Center	29	15	21	16	18	17	10	7	78	55	133
Jeanne Jugan Residence	0	0	0	0	0	5	1	5	1	10	11
Kentmere Rehab & Healthcare	1	1	8	18	33	52	40	98	82	169	251
Kutz Rehab & Nursing	0	2	6	5	6	16	15	30	27	53	80
ManorCare Pike Creek	81	60	82	98	121	169	81	176	365	503	868
ManorCare Wilmington	34	26	48	70	42	70	32	73	156	239	395
Millcroft	1	0	5	3	16	21	20	57	42	81	123
New Castle Health & Rehab	4	33	24	44	1	13	12	1	41	91	132
Newark Manor	0	0	0	0	0	16	3	5	3	21	24
Parkview Nursing & Rehab	1	7	10	12	10	10	6	20	27	49	76
Regal Heights Healthcare &	3	10	8	12	11	14	22	27	44	63	107
Regency Healthcare & Rehab	0	3	4	10	18	14	8	9	30	36	66
Shipley Manor Health Care	0	0	1	4	3	28	29	59	33	91	124
Stonegates	0	0	1	2	4	10	20	23	25	35	60
Weston Senior Living Center	0	0	0	0	24	0	2	8	26	8	34
WBC Cokesbury Village	0	0	0	0	3	18	23	36	26	54	80
WBC Country House	0	0	1	3	17	18	25	46	43	67	110
NCC (Private) Total	231	257	422	559	598	975	641	1,288	1,892	3,079	4,971

**Table 13.3
(Continued)**

Number of White Admissions by Age, Gender, County and Facility, 2019

Nursing Home	<65 Male	< 65 Female	65-74 Male	65-74 Female	75-84 Male	75-84 Female	85+ Male	85+ Female	Total Male	Total Female	Total M+F
Kent County (Private)											
Cadia Rehab Capitol	16	17	19	24	19	35	20	40	74	116	190
Courtland Manor	0	2	2	2	0	9	0	13	2	26	28
Delaware Veterans Home	0	0	4	0	10	0	27	1	41	1	42
Pinnacle Rehab & Health	30	38	44	34	32	44	22	29	128	145	273
Silver Lake Center	29	45	30	65	18	57	17	37	94	204	298
The Center at Eden Hill	15	21	45	79	100	122	59	113	219	335	554
Westminster Village	0	0	0	4	8	36	60	108	68	148	216
Kent County (Private) Total	90	123	144	208	187	303	205	341	626	975	1,601
Sussex County (Private)											
Atlantic Shores	34	33	42	39	64	82	58	83	198	237	435
Cadia Rehab Renaissance	19	22	70	89	97	122	54	130	240	363	603
Country Rest Home	4	1	4	5	14	18	17	36	39	60	99
Delmar Nursing & Rehab	7	6	14	8	17	18	12	12	50	44	94
Harbor Health Care	2	5	23	22	21	37	25	65	71	129	200
Harrison Senior Living	7	5	33	31	49	58	30	70	119	164	283
Lofland Park Center	17	10	23	28	47	63	23	41	110	142	252
Milford Center	35	28	30	41	27	46	15	38	107	153	260
Seaford Center	23	34	41	39	32	36	10	16	106	125	231
The Moorings at Lewes	0	0	5	6	14	27	35	56	54	89	143
WBC Manor House	0	0	3	10	7	26	21	46	31	82	113
Sussex County (Private) Total	148	144	288	318	389	533	300	593	1,125	1,588	2,713
Total Private Facilities	469	524	854	1,085	1,174	1,811	1,146	2,222	3,643	5,642	9,285
Public Facilities											
DE Hosp for Chronically Ill	0	1	1	0	0	0	0	0	1	1	2
Governor Bacon Health Center	0	0	0	0	0	0	0	0	0	0	0
Public Total	0	1	1	0	0	0	0	0	1	1	2
Total All Facilities	469	525	855	1,085	1,174	1,811	1,146	2,222	3,644	5,643	9,287

Notes: NCC=New Castle County.

Table 13.4
Number of Black Admissions by Age, Gender, County and Facility, 2019

Nursing Home	<65 Male	< 65 Female	65-74 Male	65-74 Female	75-84 Male	75-84 Female	85+ Male	85+ Female	Total Male	Total Female	Total M+F
NCC (Private)											
Brackenville Center	3	6	4	3	6	3	2	4	15	16	31
Brandywine Nursing & Rehab	7	5	14	7	7	16	3	9	31	37	68
Cadia Rehab Broadmeadow	3	10	8	7	10	12	2	12	23	41	64
Cadia Rehab Pike Creek	7	16	6	11	9	7	3	7	25	41	66
Cadia Rehab Silverside	17	15	18	28	12	26	3	21	50	90	140
Churchman Village	4	16	7	9	19	10	10	15	40	50	90
Forwood Manor	0	0	0	0	0	1	0	3	0	4	4
Foulk Manor North	0	0	0	1	0	0	0	2	0	3	3
Foulk Manor South	0	0	0	1	0	0	0	4	0	5	5
Gilpin Hall	0	0	0	2	3	4	1	3	4	9	13
Hillside Center	23	23	26	22	20	17	12	14	81	76	157
Jeanne Jugan Residence	0	0	0	0	0	0	0	0	0	0	0
Kentmere Rehab & Healthcare	2	5	4	21	14	40	4	24	24	90	114
Kutz Rehab & Nursing	0	0	0	0	0	3	1	2	1	5	6
ManorCare Pike Creek	47	27	34	51	26	35	13	10	120	123	243
ManorCare Wilmington	21	31	23	31	21	23	11	20	76	105	181
Millcroft	2	0	1	2	2	4	1	5	6	11	17
New Castle Health & Rehab	25	1	12	35	11	24	0	13	48	73	121
Newark Manor	0	0	0	1	0	1	0	0	0	2	2
Parkview Nursing & Rehab	6	13	5	17	4	6	3	6	18	42	60
Regal Heights Healthcare & Rehab	4	2	10	6	4	10	3	8	21	26	47
Regency Healthcare & Rehab	8	5	3	24	9	7	9	15	29	51	80
Shipley Manor Health Care	0	0	0	2	2	5	0	1	2	8	10
Stonegates	0	0	0	0	0	0	0	0	0	0	0
Weston Senior Living Center	0	0	0	0	0	0	0	0	0	0	0
WBC Cokesbury Village	0	0	0	0	0	0	0	0	0	0	0
WBC Country House	0	0	0	0	0	0	0	0	0	0	0
NCC (Private) Total	179	175	175	281	179	254	81	198	614	908	1,522

Table 13.4
(Continued)

Number of Black Admissions by Age, Gender, County and Facility, 2019

Nursing Home	<65 Male	< 65 Female	65-74 Male	65-74 Female	75-84 Male	75-84 Female	85+ Male	85+ Female	Total Male	Total Female	Total M+F
Kent County (Private)											
Cadia Rehab Capitol	3	11	9	7	9	7	1	11	22	36	58
Courtland Manor	3	0	2	0	3	0	1	2	9	2	11
Delaware Veterans Home	0	0	2	0	1	0	2	0	5	0	5
Pinnacle Rehab & Health	12	13	19	12	15	13	4	14	50	52	102
Silver Lake Center	26	15	10	12	13	14	7	6	56	47	103
The Center at Eden Hill	5	10	14	21	15	22	7	20	41	73	114
Westminster Village	0	4	0	0	8	12	8	0	16	16	32
Kent County (Private) Total	49	53	56	52	64	68	30	53	199	226	425
Sussex County (Private)											
Atlantic Shores	2	18	12	7	13	7	9	3	36	35	71
Cadia Rehab Renaissance	1	3	2	3	4	8	3	4	10	18	28
Country Rest Home	0	0	0	0	1	5	1	0	2	5	7
Delmar Nursing & Rehab	2	3	1	5	1	8	2	5	6	21	27
Harbor Health Care	0	0	1	0	1	2	1	3	3	5	8
Harrison Senior Living	2	3	6	1	12	4	3	3	23	11	34
Lofland Park Center	14	8	7	6	8	8	7	5	36	27	63
Milford Center	19	12	7	4	5	5	4	6	35	27	62
Seaford Center	6	13	7	15	3	4	2	2	18	34	52
The Moorings at Lewes	0	0	0	0	0	0	0	0	0	0	0
WBC Manor House	0	0	0	1	0	0	0	0	0	1	1
Sussex County (Private) Total	46	60	43	42	48	51	32	31	169	184	353
Total Private Facilities	274	288	274	375	291	373	143	282	982	1,318	2,300
Public Facilities											
DE Hosp for Chronically Ill	0	0	0	0	0	1	0	0	0	1	1
Governor Bacon Health Center	0	0	0	0	0	0	0	0	0	0	0
Public Total	0	0	0	0	0	1	0	0	0	1	1
Total All Facilities	274	288	274	375	291	374	143	282	982	1,319	2,301

Notes: NCC=New Castle County.

Table 14
Number of Admissions by Source of Referral, 2019

Nursing Home	Home	Hospital	Assisted Living	Private LTCF	State Owned LTCF	Other	Total
NCC (Private)							
Brackenville Center	11	204	6	35	0	3	259
Brandywine Nursing & Rehab	38	203	52	0	1	0	294
Cadia Rehab Broadmeadow	32	418	0	13	2	0	465
Cadia Rehab Pike Creek	7	575	7	0	0	0	589
Cadia Rehab Silverside	21	546	0	4	0	0	571
Churchman Village	106	280	0	1	0	0	387
Forwood Manor	16	151	15	5	0	0	187
Foulk Manor North	3	23	7	5	0	0	38
Foulk Manor South	3	7	14	7	0	0	31
Gilpin Hall	16	7	6	8	0	0	37
Hillside Center	17	279	1	0	0	0	297
Jeanne Jugan Residence	5	0	0	0	0	6	11
Kentmere Rehab & Healthcare	2	355	2	1	0	8	368
Kutz Rehab & Nursing	13	63	5	6	0	0	87
ManorCare Pike Creek	956	0	171	24	0	0	1151
ManorCare Wilmington	19	564	4	0	0	2	589
Millcroft	4	128	6	4	0	1	143
New Castle Health & Rehab	228	25	0	0	0	0	253
Newark Manor	11	8	5	0	0	2	26
Parkview Nursing & Rehab	44	84	2	9	0	0	139
Regal Heights Healthcare &	40	97	6	9	3	3	158
Regency Healthcare & Rehab	37	107	1	7	0	0	152
Shipley Manor Health Care	1	132	0	1	0	0	134
Stonegates	30	31	0	0	0	0	61
Weston Senior Living Center	1	33	0	0	0	0	34
WBC Cokesbury Village	15	55	10	1	0	0	81
WBC Country House	3	77	0	4	0	26	110
NCC (Private) Total	1,679	4,452	320	144	6	51	6,652

Table 14
(Continued)
Number of Admissions by Source of Referral, 2019

Nursing Home	Home	Hospital	Assisted Living	Private LTCF	State Owned	Other	Total
Kent County (Private)							
Cadia Rehab Capitol	9	230	0	15	0	0	254
Courtland Manor	15	14	1	9	0	0	39
Delaware Veterans Home	26	1	4	15	0	1	47
Pinnacle Rehab & Health	21	356	1	3	0	1	382
Silver Lake Center	1	403	0	2	0	0	406
The Center at Eden Hill	19	666	0	2	0	0	687
Westminster Village	20	220	8	0	0	0	248
Kent County (Private) Total	111	1,890	14	46	0	2	2,063
Sussex County (Private)							
Atlantic Shores	21	482	2	7	0	0	512
Cadia Rehab Renaissance	12	606	4	9	0	5	636
Country Rest Home	67	24	3	0	6	6	106
Delmar Nursing & Rehab	29	80	9	3	2	2	125
Harbor Health Care	13	172	5	16	0	3	209
Harrison Senior Living	37	260	0	0	15	7	319
Lofland Park Center	53	250	2	6	3	4	318
Milford Center	11	308	2	8	0	0	329
Seaford Center	20	256	0	5	3	2	286
The Moorings at Lewes	6	131	3	3	0	2	145
WBC Manor House	21	85	9	2	1	0	118
Sussex County (Private) Total	290	2,654	39	59	30	31	3,103
Total Private Facilities	2,080	8,996	373	249	36	84	11,818
Public Facilities							
DE Hosp for Chronically Ill	1	2	0	0	0	0	3
Governor Bacon Health Center	0	0	0	0	0	0	0
Public Total	1	2	0	0	0	0	3
Total All Facilities	2,081	8,998	373	249	36	84	11,821

Note: NCC=New Castle County.

Table 14.1
Percentage of Admissions by Source of Referral, County and Facility, 2019

Nursing Home	Home	Hospital	Assisted Living	Private LTCF	State Owned LTCF	Other	Total
NCC (Private)							
Brackenville Center	4.2%	78.8%	2.3%	13.5%	0.0%	1.2%	100%
Brandywine Nursing & Rehab	12.9%	69.0%	17.7%	0.0%	0.3%	0.0%	100%
Cadia Rehab Broadmeadow	6.9%	89.9%	0.0%	2.8%	0.4%	0.0%	100%
Cadia Rehab Pike Creek	1.2%	97.6%	1.2%	0.0%	0.0%	0.0%	100%
Cadia Rehab Silverside	3.7%	95.6%	0.0%	0.7%	0.0%	0.0%	100%
Churchman Village	27.4%	72.4%	0.0%	0.3%	0.0%	0.0%	100%
Forwood Manor	8.6%	80.7%	8.0%	2.7%	0.0%	0.0%	100%
Foult Manor North	7.9%	60.5%	18.4%	13.2%	0.0%	0.0%	100%
Foult Manor South	9.7%	22.6%	45.2%	22.6%	0.0%	0.0%	100%
Gilpin Hall	43.2%	18.9%	16.2%	21.6%	0.0%	0.0%	100%
Hillside Center	5.7%	93.9%	0.3%	0.0%	0.0%	0.0%	100%
Jeanne Jugan Residence	45.5%	0.0%	0.0%	0.0%	0.0%	54.5%	100%
Kentmere Rehab & Healthcare	0.5%	96.5%	0.5%	0.3%	0.0%	2.2%	100%
Kutz Rehab & Nursing	14.9%	72.4%	5.7%	6.9%	0.0%	0.0%	100%
ManorCare Pike Creek	83.1%	0.0%	14.9%	2.1%	0.0%	0.0%	100%
ManorCare Wilmington	3.2%	95.8%	0.7%	0.0%	0.0%	0.3%	100%
Millcroft	2.8%	89.5%	4.2%	2.8%	0.0%	0.7%	100%
New Castle Health & Rehab	90.1%	9.9%	0.0%	0.0%	0.0%	0.0%	100%
Newark Manor	42.3%	30.8%	19.2%	0.0%	0.0%	7.7%	100%
Parkview Nursing & Rehab	31.7%	60.4%	1.4%	6.5%	0.0%	0.0%	100%
Regal Heights Healthcare & Rehab	25.3%	61.4%	3.8%	5.7%	1.9%	1.9%	100%
Regency Healthcare & Rehab	24.3%	70.4%	0.7%	4.6%	0.0%	0.0%	100%
Shipley Manor Health Care	0.7%	98.5%	0.0%	0.7%	0.0%	0.0%	100%
Stonegates	49.2%	50.8%	0.0%	0.0%	0.0%	0.0%	100%
Weston Senior Living Center	2.9%	97.1%	0.0%	0.0%	0.0%	0.0%	100%
WBC Cokesbury Village	18.5%	67.9%	12.3%	1.2%	0.0%	0.0%	100%
WBC Country House	2.7%	70.0%	0.0%	3.6%	0.0%	23.6%	100%
NCC (Private) Total	25.2%	66.9%	4.8%	2.2%	0.1%	0.8%	100%

Table 14.1
(Continued)
Percentage of Admissions by Source of Referral, County and Facility, 2019

Nursing Home	Home	Hospital	Assisted Living	Private LTCF	State Owned	Other	Total
Kent County (Private)							
Cadia Rehab Capitol	3.5%	90.6%	0.0%	5.9%	0.0%	0.0%	100%
Courtland Manor	38.5%	35.9%	2.6%	23.1%	0.0%	0.0%	100%
Delaware Veterans Home	55.3%	2.1%	8.5%	31.9%	0.0%	2.1%	100%
Pinnacle Rehab & Health	5.5%	93.2%	0.3%	0.8%	0.0%	0.3%	100%
Silver Lake Center	0.2%	99.3%	0.0%	0.5%	0.0%	0.0%	100%
The Center at Eden Hill	2.8%	96.9%	0.0%	0.3%	0.0%	0.0%	100%
Westminster Village	8.1%	88.7%	3.2%	0.0%	0.0%	0.0%	100%
Kent County (Private) Total	5.4%	91.6%	0.7%	2.2%	0.0%	0.1%	100%
Sussex County (Private)							
Atlantic Shores	4.1%	94.1%	0.4%	1.4%	0.0%	0.0%	100%
Cadia Rehab Renaissance	1.9%	95.3%	0.6%	1.4%	0.0%	0.8%	100%
Country Rest Home	63.2%	22.6%	2.8%	0.0%	5.7%	5.7%	100%
Delmar Nursing & Rehab	23.2%	64.0%	7.2%	2.4%	1.6%	1.6%	100%
Harbor Health Care	6.2%	82.3%	2.4%	7.7%	0.0%	1.4%	100%
Harrison Senior Living	11.6%	81.5%	0.0%	0.0%	4.7%	2.2%	100%
Lofland Park Center	16.7%	78.6%	0.6%	1.9%	0.9%	1.3%	100%
Milford Center	3.3%	93.6%	0.6%	2.4%	0.0%	0.0%	100%
Seaford Center	7.0%	89.5%	0.0%	1.7%	1.0%	0.7%	100%
The Moorings at Lewes	4.1%	90.3%	2.1%	2.1%	0.0%	1.4%	100%
WBC Manor House	17.8%	72.0%	7.6%	1.7%	0.8%	0.0%	100%
Sussex County (Private) Total	9.3%	85.5%	1.3%	1.9%	1.0%	1.0%	100%
Total Private Facilities	17.6%	76.1%	3.2%	2.1%	0.3%	0.7%	100%
Public Facilities							
DE Hosp for Chronically Ill	33.3%	66.7%	0.0%	0.0%	0.0%	0.0%	100%
Governor Bacon Health Center	N/A	N/A	N/A	N/A	N/A	N/A	N/A
Public Total	33.3%	66.7%	0.0%	0.0%	0.0%	0.0%	100%
Total All Facilities	17.6%	76.1%	3.2%	2.1%	0.3%	0.7%	100%

Note: NCC=New Castle County.

Table 15
Number of Admissions by County and State of Residence, 2019

Nursing Home	NCC	Kent	Sussex	MD	NJ	PA	Other	Total
NCC (Private)								
Brackenville Center	223	6	2	3	2	20	3	259
Brandywine Nursing & Rehab	288	0	1	1	0	2	2	294
Cadia Rehab Broadmeadow	388	28	9	32	0	7	1	465
Cadia Rehab Pike Creek	586	0	0	2	1	0	0	589
Cadia Rehab Silverside	537	0	1	3	0	30	0	571
Churchman Village	386	0	0	1	0	0	0	387
Forwood Manor	186	0	0	0	1	0	0	187
Foulk Manor North	35	0	0	0	0	2	1	38
Foulk Manor South	31	0	0	0	0	0	0	31
Gilpin Hall	35	0	0	0	2	0	0	37
Hillside Center	280	0	2	3	0	12	0	297
Jeanne Jugan Residence	11	0	0	0	0	0	0	11
Kentmere Rehab & Healthcare	350	1	0	0	0	16	1	368
Kutz Rehab & Nursing	84	0	0	0	0	1	2	87
ManorCare Pike Creek	1115	0	0	8	3	25	0	1151
ManorCare Wilmington	558	6	4	1	7	11	2	589
Millcroft	139	0	0	3	0	1	0	143
New Castle Health & Rehab	242	0	0	0	11	0	0	253
Newark Manor	24	0	0	0	0	2	0	26
Parkview Nursing & Rehab	127	1	2	0	0	6	3	139
Regal Heights Healthcare & Rehab	146	3	1	1	2	3	2	158
Regency Healthcare & Rehab	149	1	0	0	0	2	0	152
Shipley Manor Health Care	133	0	0	0	0	1	0	134
Stonegates	60	0	0	0	0	1	0	61
Weston Senior Living Center	34	0	0	0	0	0	0	34
WBC Cokesbury Village	81	0	0	0	0	0	0	81
WBC Country House	109	0	0	0	0	0	1	110
NCC (Private) Total	6,337	46	22	58	29	142	18	6,652

Table 15
(Continued)
Number of Admissions by County and State of Residence, 2019

Nursing Home	NCC	Kent	Sussex	MD	NJ	PA	Other	Total
Kent County (Private)								
Cadia Rehab Capitol	0	250	4	0	0	0	0	254
Courtland Manor	0	33	5	0	0	1	0	39
Delaware Veterans Home	7	22	18	0	0	0	0	47
Pinnacle Rehab & Health	79	285	7	5	0	5	1	382
Silver Lake Center	5	376	18	4	1	2	0	406
The Center at Eden Hill	9	625	35	15	0	2	1	687
Westminster Village	10	234	0	4	0	0	0	248
Kent County (Private) Total	110	1,825	87	28	1	10	2	2,063
Sussex County (Private)								
Atlantic Shores	18	25	378	80	0	8	3	512
Cadia Rehab Renaissance	0	1	629	4	1	0	1	636
Country Rest Home	4	37	60	3	0	2	0	106
Delmar Nursing & Rehab	1	6	68	50	0	0	0	125
Harbor Health Care	12	16	168	5	0	5	3	209
Harrison Senior Living	4	6	298	4	0	0	7	319
Lofland Park Center	0	5	298	14	0	0	1	318
Milford Center	16	80	225	2	0	5	1	329
Seaford Center	21	24	196	31	3	8	3	286
The Moorings at Lewes	1	0	143	0	1	0	0	145
WBC Manor House	2	1	97	12	0	3	3	118
Sussex County (Private) Total	79	201	2,560	205	5	31	22	3,103
Total Private Facilities	6,526	2,072	2,669	291	35	183	42	11,818
Public Facilities								
DE Hosp for Chronically Ill	2	1	0	0	0	0	0	3
Governor Bacon Health Center	0	0	0	0	0	0	0	0
Public Total	2	1	0	0	0	0	0	3
Total All Facilities	6,528	2,073	2,669	291	35	183	42	11,821

Note: NCC=New Castle County.

Table 15.1
Percentage of Admissions by County and State of Residence, 2019

Nursing Home	NCC	Kent	Sussex	MD	NJ	PA	Other	Total
NCC (Private)								
Brackenville Center	86.1%	2.3%	0.8%	1.2%	0.8%	7.7%	1.2%	100.0%
Brandywine Nursing & Rehab	98.0%	0.0%	0.3%	0.3%	0.0%	0.7%	0.7%	100.0%
Cadia Rehab Broadmeadow	83.4%	6.0%	1.9%	6.9%	0.0%	1.5%	0.2%	100.0%
Cadia Rehab Pike Creek	99.5%	0.0%	0.0%	0.3%	0.2%	0.0%	0.0%	100.0%
Cadia Rehab Silverside	94.0%	0.0%	0.2%	0.5%	0.0%	5.3%	0.0%	100.0%
Churchman Village	99.7%	0.0%	0.0%	0.3%	0.0%	0.0%	0.0%	100.0%
Forwood Manor	99.5%	0.0%	0.0%	0.0%	0.5%	0.0%	0.0%	100.0%
Foulk Manor North	92.1%	0.0%	0.0%	0.0%	0.0%	5.3%	2.6%	100.0%
Foulk Manor South	100.0	0.0%	0.0%	0.0%	0.0%	0.0%	0.0%	100.0%
Gilpin Hall	94.6%	0.0%	0.0%	0.0%	5.4%	0.0%	0.0%	100.0%
Hillside Center	94.3%	0.0%	0.7%	1.0%	0.0%	4.0%	0.0%	100.0%
Jeanne Jugan Residence	100.0	0.0%	0.0%	0.0%	0.0%	0.0%	0.0%	100.0%
Kentmere Rehab & Healthcare	95.1%	0.3%	0.0%	0.0%	0.0%	4.3%	0.3%	100.0%
Kutz Rehab & Nursing	96.6%	0.0%	0.0%	0.0%	0.0%	1.1%	2.3%	100.0%
ManorCare Pike Creek	96.9%	0.0%	0.0%	0.7%	0.3%	2.2%	0.0%	100.0%
ManorCare Wilmington	94.7%	1.0%	0.7%	0.2%	1.2%	1.9%	0.3%	100.0%
Millcroft	97.2%	0.0%	0.0%	2.1%	0.0%	0.7%	0.0%	100.0%
New Castle Health & Rehab	95.7%	0.0%	0.0%	0.0%	4.3%	0.0%	0.0%	100.0%
Newark Manor	92.3%	0.0%	0.0%	0.0%	0.0%	7.7%	0.0%	100.0%
Parkview Nursing & Rehab	91.4%	0.7%	1.4%	0.0%	0.0%	4.3%	2.2%	100.0%
Regal Heights Healthcare & Rehab	92.4%	1.9%	0.6%	0.6%	1.3%	1.9%	1.3%	100.0%
Regency Healthcare & Rehab	98.0%	0.7%	0.0%	0.0%	0.0%	1.3%	0.0%	100.0%
Shipley Manor Health Care	99.3%	0.0%	0.0%	0.0%	0.0%	0.7%	0.0%	100.0%
Stonegates	98.4%	0.0%	0.0%	0.0%	0.0%	1.6%	0.0%	100.0%
Weston Senior Living Center	100.0	0.0%	0.0%	0.0%	0.0%	0.0%	0.0%	100.0%
WBC Cokesbury Village	100.0	0.0%	0.0%	0.0%	0.0%	0.0%	0.0%	100.0%
WBC Country House	99.1%	0.0%	0.0%	0.0%	0.0%	0.0%	0.9%	100.0%
NCC (Private) Total	95.3%	0.7%	0.3%	0.9	0.4%	2.1%	0.3%	100.0%

Table 15.1
(Continued)
Percentage of Admissions by County and State of Residence, 2019

Nursing Home	NCC	Kent	Sussex	MD	NJ	PA	Other	Total
Kent County (Private)								
Cadia Rehab Capitol	0.0%	98.4%	1.6%	0.0%	0.0%	0.0%	0.0%	100.0%
Courtland Manor	0.0%	84.6%	12.8%	0.0%	0.0%	2.6%	0.0%	100.0%
Delaware Veterans Home	14.9%	46.8%	38.3%	0.0%	0.0%	0.0%	0.0%	100.0%
Pinnacle Rehab & Health	20.7%	74.6%	1.8%	1.3%	0.0%	1.3%	0.3%	100.0%
Silver Lake Center	1.2%	92.6%	4.4%	1.0%	0.2%	0.5%	0.0%	100.0%
The Center at Eden Hill	1.3%	91.0%	5.1%	2.2%	0.0%	0.3%	0.1%	100.0%
Westminster Village	4.0%	94.4%	0.0%	1.6%	0.0%	0.0%	0.0%	100.0%
Kent County (Private) Total	5.3%	88.5%	4.2%	1.4%	0.0%	0.5%	0.1%	100.0%
Sussex County (Private)								
Atlantic Shores	3.5%	4.9%	73.8%	15.6%	0.0%	1.6%	0.6%	100.0%
Cadia Rehab Renaissance	0.0%	0.2%	98.9%	0.6%	0.2%	0.0%	0.2%	100.0%
Country Rest Home	3.8%	34.9%	56.6%	2.8%	0.0%	1.9%	0.0%	100.0%
Delmar Nursing & Rehab	0.8%	4.8%	54.4%	40.0%	0.0%	0.0%	0.0%	100.0%
Harbor Health Care	5.7%	7.7%	80.4%	2.4%	0.0%	2.4%	1.4%	100.0%
Harrison Senior Living	1.3%	1.9%	93.4%	1.3%	0.0%	0.0%	2.2%	100.0%
Lofland Park Center	0.0%	1.6%	93.7%	4.4%	0.0%	0.0%	0.3%	100.0%
Milford Center	4.9%	24.3%	68.4%	0.6%	0.0%	1.5%	0.3%	100.0%
Seaford Center	7.3%	8.4%	68.5%	10.8%	1.0%	2.8%	1.0%	100.0%
The Moorings at Lewes	0.7%	0.0%	98.6%	0.0%	0.7%	0.0%	0.0%	100.0%
WBC Manor House	1.7%	0.8%	82.2%	10.2%	0.0%	2.5%	2.5%	100.0%
Sussex County (Private) Total	2.5%	6.5%	82.5%	6.6%	0.2%	1.0%	0.7%	100.0%
Total Private Facilities	55.2%	17.5%	22.6%	2.5%	0.3%	1.5%	0.4%	100.0%
Public Facilities								
DE Hosp for Chronically Ill	66.7%	33.3%	0.0%	0.0%	0.0%	0.0%	0.0%	100.0%
Governor Bacon Health Center	N/A	N/A	N/A	N/A	N/A	N/A	N/A	N/A
Public Total	66.7%	33.3%	0.0%	0.0%	0.0%	0.0%	0.0%	100.0%
Total All Facilities	55.2%	17.5%	22.6%	2.5%	0.3%	1.5%	0.4%	100.0%

Note: NCC=New Castle County.

Table 16
Number of Discharges by Age, Gender, County and Facility, 2019

Nursing Home	<65 Male	< 65 Female	65-74 Male	65-74 Female	75-84 Male	75-84 Female	85+ Male	85+ Female	Total Male	Total Female	Total M+F
NCC (Private)											
Brackenville Center	7	10	27	29	35	44	36	58	105	141	246
Brandywine Nursing & Rehab	17	18	46	38	34	54	40	95	137	205	342
Cadia Rehab Broadmeadow	14	30	46	59	50	89	44	81	154	259	413
Cadia Rehab Pike Creek	15	30	53	52	82	115	66	128	216	325	541
Cadia Rehab Silverside	42	29	43	70	68	114	38	129	191	342	533
Churchman Village	20	26	44	48	50	44	52	64	166	182	348
Forwood Manor	0	1	4	2	14	42	25	106	43	151	194
Foulk Manor North	1	0	2	3	1	8	12	19	16	30	46
Foulk Manor South	0	1	0	1	2	4	7	15	9	21	30
Gilpin Hall	0	1	0	1	1	3	7	22	8	27	35
Hillside Center	51	38	52	37	39	30	28	27	170	132	302
Jeanne Jugan Residence	0	0	1	0	0	2	0	10	1	12	13
Kentmere Rehab & Healthcare	3	7	12	39	37	77	36	109	88	232	320
Kutz Rehab & Nursing	0	1	4	4	8	15	18	41	30	61	91
ManorCare Pike Creek	90	128	102	117	109	184	97	183	398	612	1010
ManorCare Wilmington	54	52	73	84	76	71	57	94	260	301	561
Millcroft	2	0	6	5	15	23	19	60	42	88	130
New Castle Health & Rehab	23	13	14	13	46	36	11	22	94	84	178
Newark Manor	0	0	0	0	0	2	2	11	2	13	15
Parkview Nursing & Rehab	9	15	15	24	18	24	7	25	49	88	137
Regal Heights Healthcare &	11	9	19	10	22	21	28	36	80	76	156
Regency Healthcare & Rehab	11	11	13	40	27	16	15	21	66	88	154
Shipley Manor Health Care	0	0	1	8	10	24	25	59	36	91	127
Stonegates	0	0	1	3	4	9	20	29	25	41	66
Weston Senior Living Center	0	0	2	3	12	17	2	6	16	26	42
WBC Cokesbury Village	0	0	0	0	5	17	29	36	34	53	87
WBC Country House	0	0	3	3	20	24	29	39	52	66	118
NCC (Private) Total	370	420	583	693	785	1,109	750	1,525	2,488	3,747	6,235

Table 16
(Continued)
Number of Discharges by Age, Gender, County and Facility, 2019

Nursing Home	<65 Male	< 65 Female	65-74 Male	65-74 Female	75-84 Male	75-84 Female	85+ Male	85+ Female	Total Male	Total Female	Total M+F
Kent County (Private)											
Cadia Rehab Capitol	21	26	24	25	30	54	20	46	95	151	246
Courtland Manor	0	1	2	7	4	13	0	17	6	38	44
Delaware Veterans Home	2	0	1	0	8	0	33	1	44	1	45
Pinnacle Rehab & Health	40	53	56	48	49	61	25	42	170	204	374
Silver Lake Center	46	54	40	63	23	75	18	47	127	239	366
The Center at Eden Hill	21	34	60	102	123	162	64	135	268	433	701
Westminster Village	0	4	0	8	12	80	48	116	60	208	268
Kent County (Private) Total	130	172	183	253	249	445	208	404	770	1,274	2,044
Sussex County (Private)											
Atlantic Shores	39	50	58	43	72	84	58	82	227	259	486
Cadia Rehab Renaissance	19	23	76	92	112	135	65	138	272	388	660
Country Rest Home	6	1	3	4	20	20	16	36	45	61	106
Delmar Nursing & Rehab	10	11	14	14	14	27	12	15	50	67	117
Harbor Health Care	5	6	26	25	24	33	31	76	86	140	226
Harrison Senior Living	9	4	44	36	50	66	33	78	136	184	320
Lofland Park Center	33	18	33	42	41	53	28	55	135	168	303
Milford Center	55	35	31	47	44	51	23	43	153	176	329
Seaford Center	29	33	39	51	29	38	13	19	110	141	251
The Moorings at Lewes	0	0	2	7	17	25	33	46	52	78	130
WBC Manor House	0	0	3	5	11	33	16	44	30	82	112
Sussex County (Private) Total	205	181	329	366	434	565	328	632	1,296	1,744	3,040
Total Private Facilities	705	773	1,095	1,312	1,468	2,119	1,286	2,561	4,554	6,765	11,319
Public Facilities											
DE Hosp for Chronically Ill	6	2	3	0	2	5	0	1	11	8	19
Governor Bacon Health	2	0	1	2	5	2	2	1	10	5	15
Public Total	8	2	4	2	7	7	2	2	21	13	34
Total All Facilities	713	775	1,099	1,314	1,475	2,126	1,288	2,563	4,575	6,778	11,353

Note: NCC=New Castle County.

Table 16.1
Percentage of Discharges by Age, Facility Type, County and Facility, 2019

Nursing Home	Under 65	65-74	75-84	85+	Total
NCC (Private)					
Brackenville Center	6.9%	22.8%	32.1%	38.2%	100.0%
Brandywine Nursing & Rehab	10.2%	24.6%	25.7%	39.5%	100.0%
Cadia Rehab Broadmeadow	10.7%	25.4%	33.7%	30.3%	100.0%
Cadia Rehab Pike Creek	8.3%	19.4%	36.4%	35.9%	100.0%
Cadia Rehab Silverstone	13.3%	21.2%	34.1%	31.3%	100.0%
Churchman Village	13.2%	26.4%	27.0%	33.3%	100.0%
Forwood Manor	0.5%	3.1%	28.9%	67.5%	100.0%
Foulk Manor North	2.2%	10.9%	19.6%	67.4%	100.0%
Foulk Manor South	3.3%	3.3%	20.0%	73.3%	100.0%
Gilpin Hall	2.9%	2.9%	11.4%	82.9%	100.0%
Hillside Center	29.5%	29.5%	22.8%	18.2%	100.0%
Jeanne Jugan Residence	0.0%	7.7%	15.4%	76.9%	100.0%
Kentmere Rehab & Healthcare	3.1%	15.9%	35.6%	45.3%	100.0%
Kutz Rehab & Nursing	1.1%	8.8%	25.3%	64.8%	100.0%
ManorCare Pike Creek	21.6%	21.7%	29.0%	27.7%	100.0%
ManorCare Wilmington	18.9%	28.0%	26.2%	26.9%	100.0%
Millcroft	1.5%	8.5%	29.2%	60.8%	100.0%
New Castle Health & Rehab	20.2%	15.2%	46.1%	18.5%	100.0%
Newark Manor	0.0%	0.0%	13.3%	86.7%	100.0%
Parkview Nursing & Rehab	17.5%	28.5%	30.7%	23.4%	100.0%
Regal Heights Healthcare & Rehab	12.8%	18.6%	27.6%	41.0%	100.0%
Regency Healthcare & Rehab	14.3%	34.4%	27.9%	23.4%	100.0%
Shipley Manor Health Care	0.0%	7.1%	26.8%	66.1%	100.0%
Stonegates	0.0%	6.1%	19.7%	74.2%	100.0%
Weston Senior Living Center	0.0%	11.9%	69.0%	19.0%	100.0%
WBC Cokesbury Village	0.0%	0.0%	25.3%	74.7%	100.0%
WBC Country House	0.0%	5.1%	37.3%	57.6%	100.0%
NCC (Private) Total	12.7%	20.5%	30.4%	36.5%	100.0%

**Table 16.1
(Continued)**

Percentage of Discharges by Age, Facility Type, County and Facility, 2019

Nursing Home	Under 65	65-74	75-84	85+	Total
Kent County (Private)					
Cadia Rehab Capitol	19.1%	19.9%	34.1%	26.8%	100.0%
Courtland Manor	2.3%	20.5%	38.6%	38.6%	100.0%
Delaware Veterans Home	4.4%	2.2%	17.8%	75.6%	100.0%
Pinnacle Rehab & Health	24.9%	27.8%	29.4%	17.9%	100.0%
Silver Lake Center	27.3%	28.1%	26.8%	17.8%	100.0%
The Center at Eden Hill	7.8%	23.1%	40.7%	28.4%	100.0%
Westminster Village	1.5%	3.0%	34.3%	61.2%	100.0%
Kent County (Private) Total	14.8%	21.3%	34.0%	29.9%	100.0%
Sussex County (Private)					
Atlantic Shores	18.3%	20.8%	32.1%	28.8%	100.0%
Cadia Rehab Renaissance	6.4%	25.5%	37.4%	30.8%	100.0%
Country Rest Home	6.6%	6.6%	37.7%	49.1%	100.0%
Delmar Nursing & Rehab	17.9%	23.9%	35.0%	23.1%	100.0%
Harbor Health Care	4.9%	22.6%	25.2%	47.3%	100.0%
Harrison Senior Living	4.1%	25.0%	36.3%	34.7%	100.0%
Lofland Park Center	16.8%	24.8%	31.0%	27.4%	100.0%
Milford Center	27.4%	23.7%	28.9%	20.1%	100.0%
Seaford Center	24.7%	35.9%	26.7%	12.7%	100.0%
The Moorings at Lewes	0.0%	6.9%	32.3%	60.8%	100.0%
WBC Manor House	0.0%	7.1%	39.3%	53.6%	100.0%
Sussex County (Private) Total	12.7%	22.9%	32.9%	31.6%	100.0%
Total Private Facilities	13.1%	21.3%	31.7%	34.0%	100.0%
Public Facilities					
DE Hosp for Chronically Ill	42.1%	15.8%	36.8%	5.3%	100.0%
Governor Bacon Health Center	13.3%	20.0%	46.7%	20.0%	100.0%
Public Total	29.4%	17.6%	41.2%	11.8%	100.0%
Total All Facilities	13.1%	21.3%	31.7%	33.9%	100.0%

Note: NCC=New Castle County.

Table 16.2
Percentage of Discharges by Gender, Facility Type, County and Facility Name, 2019

Nursing Home	Male	Female	Nursing Home	Male	Female
NCC (Private)			Kent County (Private)		
Brackenville Center	42.7%	57.3%	Cadia Rehab Capitol	38.6%	61.4%
Brandywine Nursing & Rehab	40.1%	59.9%	Courtland Manor	13.6%	86.4%
Cadia Rehab Broadmeadow	37.3%	62.7%	Delaware Veterans Home	97.8%	2.2%
Cadia Rehab Pike Creek	39.9%	60.1%	Pinnacle Rehab & Health	45.5%	54.5%
Cadia Rehab Silverside	35.8%	64.2%	Silver Lake Center	34.7%	65.3%
Churchman Village	47.7%	52.3%	The Center at Eden Hill	38.2%	61.8%
Forwood Manor	22.2%	77.8%	Westminster Village	22.4%	77.6%
Foulk Manor North	34.8%	65.2%	Kent County (Private) Total	37.7%	62.3%
Foulk Manor South	30.0%	70.0%			
Gilpin Hall	22.9%	77.1%	Sussex County (Private)		
Hillside Center	56.3%	43.7%	Atlantic Shores	46.7%	53.3%
Jeanne Jugan Residence	7.7%	92.3%	Cadia Rehab Renaissance	41.2%	58.8%
Kentmere Rehab & Healthcare	27.5%	72.5%	Country Rest Home	42.5%	57.5%
Kutz Rehab & Nursing	33.0%	67.0%	Delmar Nursing & Rehab	42.7%	57.3%
ManorCare Pike Creek	39.4%	60.6%	Harbor Health Care	38.1%	61.9%
ManorCare Wilmington	46.3%	53.7%	Harrison Senior Living	42.5%	57.5%
Millcroft	32.3%	67.7%	Lofland Park Center	44.6%	55.4%
New Castle Health & Rehab	52.8%	47.2%	Milford Center	46.5%	53.5%
Newark Manor	13.3%	86.7%	Seaford Center	43.8%	56.2%
Parkview Nursing & Rehab	35.8%	64.2%	The Moorings at Lewes	40.0%	60.0%
Regal Heights Healthcare & Rehab	51.3%	48.7%	WBC Manor House	26.8%	73.2%
Regency Healthcare & Rehab	42.9%	57.1%	Sussex County (Private) Total	42.6%	57.4%
Shipley Manor Health Care	28.3%	71.7%			
Stonegates	37.9%	62.1%	Total Private Facilities	40.2%	59.8%
Weston Senior Living Center	38.1%	61.9%			
WBC Cokesbury Village	39.1%	60.9%	Public Facilities		
WBC Country House	44.1%	55.9%	DE Hosp for Chronically Ill	57.9%	42.1%
NCC (Private) Total	39.9%	60.1%	Governor Bacon Health Center	66.7%	33.3%
			Public Total	61.8%	38.2%
			Total All Facilities	40.3%	59.7%

Note: NCC=New Castle County.

Table 16.3
Number of White Discharges by Age, Gender, County and Facility, 2019

Nursing Home	<65 Male	< 65 Female	65-74 Male	65-74 Female	75-84 Male	75-84 Female	85+ Male	85+ Female	Total Male	Total Female	Total M+F
NCC (Private)											
Brackenville Center	4	7	24	23	30	33	33	49	91	112	203
Brandywine Nursing & Rehab	3	14	31	25	19	36	37	81	90	156	246
Cadia Rehab Broadmeadow	10	20	39	50	43	70	42	68	134	208	342
Cadia Rehab Pike Creek	9	15	43	40	72	102	62	119	186	276	462
Cadia Rehab Silverside	24	18	25	38	53	86	33	103	135	245	380
Churchman Village	16	17	33	40	32	29	42	50	123	136	259
Forwood Manor	0	1	4	2	14	41	25	99	43	143	186
Foulk Manor North	1	0	2	2	1	8	12	17	16	27	43
Foulk Manor South	0	0	0	1	2	4	7	13	9	18	27
Gilpin Hall	0	0	0	1	0	3	5	16	5	20	25
Hillside Center	21	12	23	13	16	17	16	10	76	52	128
Jeanne Jugan Residence	0	0	1	0	0	2	0	9	1	11	12
Kentmere Rehab & Healthcare	1	1	7	17	29	44	33	87	70	149	219
Kutz Rehab & Nursing	0	1	4	3	7	14	17	37	28	55	83
ManorCare Pike Creek	53	85	82	86	90	147	81	164	306	482	788
ManorCare Wilmington	27	26	49	62	43	54	39	78	158	220	378
Millcroft	0	0	5	2	13	21	17	55	35	78	113
New Castle Health & Rehab	12	2	12	1	2	22	11	22	37	47	84
Newark Manor	0	0	0	0	0	0	2	10	2	10	12
Parkview Nursing & Rehab	2	5	9	12	11	14	5	16	27	47	74
Regal Heights Healthcare &	7	7	9	6	14	13	23	25	53	51	104
Regency Healthcare & Rehab	8	4	4	10	15	6	8	12	35	32	67
Shipley Manor Health Care	0	0	1	8	5	20	25	58	31	86	117
Stonegates	0	0	1	3	4	9	20	29	25	41	66
Weston Senior Living Center	0	0	2	3	12	17	2	6	16	26	42
WBC Cokesbury Village	0	0	0	0	3	17	29	36	32	53	85
WBC Country House	0	0	3	3	20	24	29	39	52	66	118
NCC (Private) Total	198	235	413	451	550	853	655	1,308	1,816	2,847	4,663

Table 16.3
(Continued)
Number of White Discharges by Age, Gender, County and Facility, 2019

Nursing Home	<65 Male	< 65 Female	65-74 Male	65-74 Female	75-84 Male	75-84 Female	85+ Male	85+ Female	Total Male	Total Female	Total M+F
Kent County (Private)											
Cadia Rehab Capitol	17	14	14	20	22	45	19	36	72	115	187
Courtland Manor	0	1	1	5	1	11	0	15	2	32	34
Delaware Veterans Home	2	0	0	0	7	0	31	1	40	1	41
Pinnacle Rehab & Health	27	40	44	36	29	48	22	27	122	151	273
Silver Lake Center	26	42	29	56	13	64	15	38	83	200	283
The Center at Eden Hill	16	21	47	78	105	133	55	111	223	343	566
Westminster Village	0	0	0	8	4	64	44	116	48	188	236
Kent County (Private) Total	88	118	135	203	181	365	186	344	590	1,030	1,620
Sussex County (Private)											
Atlantic Shores	34	32	48	38	58	72	50	77	190	219	409
Cadia Rehab Renaissance	16	18	74	90	105	124	62	130	257	362	619
Country Rest Home	6	1	3	4	20	15	16	36	45	56	101
Delmar Nursing & Rehab	8	6	13	12	13	25	10	12	44	55	99
Harbor Health Care	3	4	25	25	22	31	29	72	79	132	211
Harrison Senior Living	9	4	36	36	44	62	30	75	119	177	296
Lofland Park Center	18	13	26	36	37	46	22	49	103	144	247
Milford Center	37	27	16	43	37	43	18	37	108	150	258
Seaford Center	23	26	35	36	26	33	11	18	95	113	208
The Moorings at Lewes	0	0	2	7	17	25	33	46	52	78	130
WBC Manor House	0	0	3	5	11	33	16	44	30	82	112
Sussex County (Private) Total	154	131	281	332	390	509	297	596	1,122	1,568	2,690
Total Private Facilities	440	484	829	986	1,121	1,727	1,138	2,248	3,528	5,445	8,973
Public Facilities											
DE Hosp for Chronically Ill	2	1	1	0	1	4	0	1	4	6	10
Governor Bacon Health	1	0	1	1	4	1	2	1	8	3	11
Public Total	3	1	2	1	5	5	2	2	12	9	21
Total All Facilities	443	485	831	987	1,126	1,732	1,140	2,250	3,540	5,454	8,994

Note: NCC=New Castle County.

Table 16.4
Number of Black Discharges by Age, Gender, Facility Type, County and Facility, 2019

Nursing Home	<65 Male	< 65 Female	65-74 Male	65-74 Female	75-84 Male	75-84 Female	85+ Male	85+ Female	Total Male	Total Female	Total M+F
NCC (Private)											
Brackenville Center	2	2	3	5	2	7	2	5	9	19	28
Brandywine Nursing &	14	4	12	7	9	17	3	14	38	42	80
Cadia Rehab Broadmeadow	4	10	6	7	7	13	2	12	19	42	61
Cadia Rehab Pike Creek	4	15	7	10	8	12	4	5	23	42	65
Cadia Rehab Silverside	12	11	18	28	13	27	4	23	47	89	136
Churchman Village	4	8	10	7	17	12	9	12	40	39	79
Forwood Manor	0	0	0	0	0	1	0	7	0	8	8
Foulk Manor North	0	0	0	1	0	0	0	2	0	3	3
Foulk Manor South	0	1	0	0	0	0	0	2	0	3	3
Gilpin Hall	0	1	0	0	1	0	1	6	2	7	9
Hillside Center	29	26	24	24	22	12	12	17	87	79	166
Jeanne Jugan Residence	0	0	0	0	0	0	0	1	0	1	1
Kentmere Rehab &	2	5	4	21	8	33	3	22	17	81	98
Kutz Rehab & Nursing	0	0	0	1	1	1	1	3	2	5	7
ManorCare Pike Creek	31	43	20	28	3	28	7	19	61	118	179
ManorCare Wilmington	27	26	21	22	28	17	14	16	90	81	171
Millcroft	2	0	1	3	2	2	0	5	5	10	15
New Castle Health & Rehab	11	11	2	12	44	14	0	0	57	37	94
Newark Manor	0	0	0	0	0	2	0	1	0	3	3
Parkview Nursing & Rehab	6	10	5	11	7	10	2	8	20	39	59
Regal Heights Healthcare &	4	2	10	3	7	7	4	7	25	19	44
Regency Healthcare &	3	7	8	26	11	9	7	9	29	51	80
Shipley Manor Health Care	0	0	0	0	5	4	0	1	5	5	10
Stonegates	0	0	0	0	0	0	0	0	0	0	0
Weston Senior Living Center	0	0	0	0	0	0	0	0	0	0	0
WBC Cokesbury Village	0	0	0	0	1	0	0	0	1	0	1
WBC Country House	0	0	0	0	0	0	0	0	0	0	0
NCC (Private) Total	155	182	151	216	196	228	75	197	577	823	1,400

**Table 16.4
(Continued)**

Number of Black Discharges by Age, Gender, Facility Type, County and Facility, 2019

Nursing Home	<65 Male	< 65 Female	65-74 Male	65-74 Female	75-84 Male	75-84 Female	85+ Male	85+ Female	Total Male	Total Female	Total M+F
Kent County (Private)											
Cadia Rehab Capitol	3	10	10	5	8	9	1	9	22	33	55
Courtland Manor	0	0	1	1	3	2	0	2	4	5	9
Delaware Veterans Home	0	0	1	0	1	0	2	0	4	0	4
Pinnacle Rehab & Health	11	13	11	11	19	13	3	12	44	49	93
Silver Lake Center	18	11	11	7	10	11	3	9	42	38	80
The Center at Eden Hill	4	11	11	22	15	26	7	22	37	81	118
Westminster Village	0	4	0	0	8	16	4	0	12	20	32
Kent County (Private) Total	36	49	45	46	64	77	20	54	165	226	391
Sussex County (Private)											
Atlantic Shores	3	18	10	5	12	8	8	3	33	34	67
Cadia Rehab Renaissance	2	5	2	2	6	11	2	7	12	25	37
Country Rest Home	0	0	0	0	0	5	0	0	0	5	5
Delmar Nursing & Rehab	2	5	1	2	1	2	2	1	6	10	16
Harbor Health Care	2	2	1	0	2	1	2	4	7	7	14
Harrison Senior Living	0	0	7	0	6	4	3	3	16	7	23
Lofland Park Center	14	5	6	6	4	7	6	5	30	23	53
Milford Center	17	8	11	4	7	7	4	6	39	25	64
Seaford Center	5	7	4	15	3	4	2	1	14	27	41
The Moorings at Lewes	0	0	0	0	0	0	0	0	0	0	0
WBC Manor House	0	0	0	0	0	0	0	0	0	0	0
Sussex County (Private) Total	45	50	42	34	41	49	29	30	157	163	320
Total Private Facilities	236	281	238	296	301	354	124	281	899	1,212	2,111
Public Facilities											
DE Hosp for Chronically Ill	4	1	2	0	1	1	0	0	7	2	9
Governor Bacon Health Center	1	0	0	1	1	1	0	0	2	2	4
Public Total	5	1	2	1	2	2	0	0	9	4	13
Total All Facilities	241	282	240	297	303	356	124	281	908	1,216	2,124

Note: NCC=New Castle County.

Table 17
Number of Discharges by Disposition, Facility Type, County and Facility Name, 2019

Nursing Home	Home	Hospital	Assisted Living	Private LTCF	State Owned LTCF	Death	Other	Total
NCC (Private)								
Brackenville Center	145	39	7	8	1	41	5	246
Brandywine Nursing & Rehab	39	222	11	0	0	70	0	342
Cadia Rehab Broadmeadow	332	15	22	10	2	16	16	413
Cadia Rehab Pike Creek	506	22	8	2	0	0	3	541
Cadia Rehab Silverside	429	64	5	3	14	18	0	533
Churchman Village	286	44	5	6	0	7	0	348
Forwood Manor	123	35	6	14	0	16	0	194
Foulk Manor North	1	5	9	12	0	18	1	46
Foulk Manor South	4	0	6	4	0	16	0	30
Gilpin Hall	2	1	2	1	0	29	0	35
Hillside Center	200	80	1	6	0	15	0	302
Jeanne Jugan Residence	1	1	0	0	0	11	0	13
Kentmere Rehab & Healthcare	175	85	21	4	0	34	1	320
Kutz Rehab & Nursing	26	16	10	4	0	35	0	91
ManorCare Pike Creek	795	47	102	42	0	24	0	1010
ManorCare Wilmington	350	130	22	24	1	29	5	561
Millcroft	53	26	22	0	0	24	5	130
New Castle Health & Rehab	52	88	11	3	0	24	0	178
Newark Manor	0	0	2	0	0	13	0	15
Parkview Nursing & Rehab	85	19	1	3	0	27	2	137
Regal Heights Healthcare &	73	27	8	3	3	39	3	156
Regency Healthcare & Rehab	94	41	1	3	0	13	2	154
Shipley Manor Health Care	58	28	15	17	0	9	0	127
Stonegates	47	4	0	0	0	15	0	66
Weston Senior Living Center	22	12	0	0	0	8	0	42
WBC Cokesbury Village	38	5	10	0	0	34	0	87
WBC Country House	10	28	0	3	0	22	55	118
NCC (Private) Total	3,946	1,084	307	172	21	607	98	6,235

Table 17
(Continued)

Number of Discharges by Disposition, Facility Type, County and Facility Name, 2019

Nursing Home	Home	Hospital	Assisted Living	Private LTCF	State Owned LTCF	Death	Other	Total
Kent County (Private)								
Cadia Rehab Capitol	172	45	6	4	1	13	5	246
Courtland Manor	18	4	0	3	0	19	0	44
Delaware Veterans Home	2	9	0	1	0	31	2	45
Pinnacle Rehab & Health	179	137	2	16	4	33	3	374
Silver Lake Center	209	103	4	15	0	35	0	366
The Center at Eden Hill	493	156	23	16	0	13	0	701
Westminster Village	84	100	32	0	0	52	0	268
Kent County (Private) Total	1,157	554	67	55	5	196	10	2,044
Sussex County (Private)								
Atlantic Shores	292	107	5	22	2	58	0	486
Cadia Rehab Renaissance	471	123	17	19	0	27	3	660
Country Rest Home	49	5	0	0	6	44	2	106
Delmar Nursing & Rehab	72	12	0	3	3	26	1	117
Harbor Health Care	119	42	15	6	0	41	3	226
Harrison Senior Living	187	76	4	1	8	41	3	320
Lofland Park Center	190	50	2	5	2	54	0	303
Milford Center	179	90	5	11	1	42	1	329
Seaford Center	159	52	1	8	2	26	3	251
The Moorings at Lewes	85	6	14	5	0	19	1	130
WBC Manor House	50	26	19	4	1	12	0	112
Sussex County (Private) Total	1,853	589	82	84	25	390	17	3,040
Total Private Facilities								
	6,956	2,227	456	311	51	1,193	125	11,319
Public Facilities								
DE Hosp for Chronically Ill	3	8	0	0	0	8	0	19
Governor Bacon Health Center	0	2	0	0	0	13	0	15
Public Total	3	10	0	0	0	21	0	34
Total All Facilities								
	6,959	2,237	456	311	51	1,214	125	11,353

Note: NCC=New Castle County.

Table 17.1
Percentage of Discharges by Disposition, Facility Type, County and Facility Name, 2019

Nursing Home	Home	Hospital	Assisted Living	Private LTCF	State Owned LTCF	Death	Other	Total
NCC (Private)								
Brackenville Center	58.9%	15.9%	2.8%	3.3%	0.4%	16.7%	2.0%	100.0%
Brandywine Nursing & Rehab	11.4%	64.9%	3.2%	0.0%	0.0%	20.5%	0.0%	100.0%
Cadia Rehab Broadmeadow	80.4%	3.6%	5.3%	2.4%	0.5%	3.9%	3.9%	100.0%
Cadia Rehab Pike Creek	93.5%	4.1%	1.5%	0.4%	0.0%	0.0%	0.6%	100.0%
Cadia Rehab Silverside	80.5%	12.0%	0.9%	0.6%	2.6%	3.4%	0.0%	100.0%
Churchman Village	82.2%	12.6%	1.4%	1.7%	0.0%	2.0%	0.0%	100.0%
Forwood Manor	63.4%	18.0%	3.1%	7.2%	0.0%	8.2%	0.0%	100.0%
Foult Manor North	2.2%	10.9%	19.6%	26.1%	0.0%	39.1%	2.2%	100.0%
Foult Manor South	13.3%	0.0%	20.0%	13.3%	0.0%	53.3%	0.0%	100.0%
Gilpin Hall	5.7%	2.9%	5.7%	2.9%	0.0%	82.9%	0.0%	100.0%
Hillside Center	66.2%	26.5%	0.3%	2.0%	0.0%	5.0%	0.0%	100.0%
Jeanne Jugan Residence	7.7%	7.7%	0.0%	0.0%	0.0%	84.6%	0.0%	100.0%
Kentmere Rehab & Healthcare	54.7%	26.6%	6.6%	1.3%	0.0%	10.6%	0.3%	100.0%
Kutz Rehab & Nursing	28.6%	17.6%	11.0%	4.4%	0.0%	38.5%	0.0%	100.0%
ManorCare Pike Creek	78.7%	4.7%	10.1%	4.2%	0.0%	2.4%	0.0%	100.0%
ManorCare Wilmington	62.4%	23.2%	3.9%	4.3%	0.2%	5.2%	0.9%	100.0%
Millcroft	40.8%	20.0%	16.9%	0.0%	0.0%	18.5%	3.8%	100.0%
New Castle Health & Rehab	29.2%	49.4%	6.2%	1.7%	0.0%	13.5%	0.0%	100.0%
Newark Manor	0.0%	0.0%	13.3%	0.0%	0.0%	86.7%	0.0%	100.0%
Parkview Nursing & Rehab	62.0%	13.9%	0.7%	2.2%	0.0%	19.7%	1.5%	100.0%
Regal Heights Healthcare &	46.8%	17.3%	5.1%	1.9%	1.9%	25.0%	1.9%	100.0%
Regency Healthcare & Rehab	61.0%	26.6%	0.6%	1.9%	0.0%	8.4%	1.3%	100.0%
Shipley Manor Health Care	45.7%	22.0%	11.8%	13.4%	0.0%	7.1%	0.0%	100.0%
Stonegates	71.2%	6.1%	0.0%	0.0%	0.0%	22.7%	0.0%	100.0%
Weston Senior Living Center	52.4%	28.6%	0.0%	0.0%	0.0%	19.0%	0.0%	100.0%
WBC Cokesbury Village	43.7%	5.7%	11.5%	0.0%	0.0%	39.1%	0.0%	100.0%
WBC Country House	8.5%	23.7%	0.0%	2.5%	0.0%	18.6%	46.6%	100.0%
NCC (Private) Total	63.3%	17.4%	4.9%	2.8%	0.3%	9.7%	1.6%	100.0%

**Table 17.1
(Continued)**

Percentage of Discharges by Disposition, Facility Type, County and Facility Name, 2019

Nursing Home	Home	Hospital	Assisted Living	Private LTCF	State Owned LTCF	Death	Other	Total
Kent County (Private)								
Cadia Rehab Capitol	69.9%	18.3%	2.4%	1.6%	0.4%	5.3%	2.0%	100.0%
Courtland Manor	40.9%	9.1%	0.0%	6.8%	0.0%	43.2%	0.0%	100.0%
Delaware Veterans Home	4.4%	20.0%	0.0%	2.2%	0.0%	68.9%	4.4%	100.0%
Pinnacle Rehab & Health	47.9%	36.6%	0.5%	4.3%	1.1%	8.8%	0.8%	100.0%
Silver Lake Center	57.1%	28.1%	1.1%	4.1%	0.0%	9.6%	0.0%	100.0%
The Center at Eden Hill	70.3%	22.3%	3.3%	2.3%	0.0%	1.9%	0.0%	100.0%
Westminster Village	31.3%	37.3%	11.9%	0.0%	0.0%	19.4%	0.0%	100.0%
Kent County (Private) Total	56.6%	27.1%	3.3%	2.7%	0.2%	9.6%	0.5%	100.0%
Sussex County (Private)								
Atlantic Shores	60.1%	22.0%	1.0%	4.5%	0.4%	11.9%	0.0%	100.0%
Cadia Rehab Renaissance	71.4%	18.6%	2.6%	2.9%	0.0%	4.1%	0.5%	100.0%
Country Rest Home	46.2%	4.7%	0.0%	0.0%	5.7%	41.5%	1.9%	100.0%
Delmar Nursing & Rehab	61.5%	10.3%	0.0%	2.6%	2.6%	22.2%	0.9%	100.0%
Harbor Health Care	52.7%	18.6%	6.6%	2.7%	0.0%	18.1%	1.3%	100.0%
Harrison Senior Living	58.4%	23.8%	1.3%	0.3%	2.5%	12.8%	0.9%	100.0%
Lofland Park Center	62.7%	16.5%	0.7%	1.7%	0.7%	17.8%	0.0%	100.0%
Milford Center	54.4%	27.4%	1.5%	3.3%	0.3%	12.8%	0.3%	100.0%
Seaford Center	63.3%	20.7%	0.4%	3.2%	0.8%	10.4%	1.2%	100.0%
The Moorings at Lewes	65.4%	4.6%	10.8%	3.8%	0.0%	14.6%	0.8%	100.0%
WBC Manor House	44.6%	23.2%	17.0%	3.6%	0.9%	10.7%	0.0%	100.0%
Sussex County (Private) Total	61.0%	19.4%	2.7%	2.8%	0.8%	12.8%	0.6%	100.0%
Total Private Facilities	61.5%	19.7%	4.0%	2.7%	0.5%	10.5%	1.1%	100.0%
Public Facilities								
DE Hosp for Chronically Ill	15.8%	42.1%	0.0%	0.0%	0.0%	42.1%	0.0%	100.0%
Governor Bacon Health Center	0.0%	13.3%	0.0%	0.0%	0.0%	86.7%	0.0%	100.0%
Public Total	8.8%	29.4%	0.0%	0.0%	0.0%	61.8%	0.0%	100.0%
Total All Facilities	61.3%	19.7%	4.0%	2.7%	0.4%	10.7%	1.1%	100.0%

Note: NCC=New Castle County.

APPENDIX A: 2019 NURSING HOME TRENDS AMONG THE UNDER 65 POPULATION

In February 2019, the DHCC began collecting new admissions, discharge, and billable patient days data on the Under 65 nursing home patient population. In previous years, data pertaining to this cohort were consolidated into an Under 65 category. Revised data collection forms asked facilities to report data for this cohort using the following sub-cohort categories: ages 18-34, 35-44, 45-54, and 55-64. The DHCC used the new data to begin tracking age-specific key nursing home metrics among younger populations. The 2019 data for the nursing home patient population age 18-34, 35-44, 45-54, and 55-64 serve as baseline data for future surveillance efforts. Below is a summary of data obtained for these sub-cohort age categories.

In 2019, 82% of monthly surveillance reports submitted by Nursing Homes were submitted using the revised form to include key metric data for the 18-34, 35-44, 45-54, and 55-64 sub-cohorts. Tables A1 and A2 include 2019 admissions and discharge data among sub-cohorts within the Under 65 population. Patients under the age of 65 accounted for 1,590 admissions to and 1,488 discharges from Delaware nursing homes in 2019. Age-specific data by sub-cohort were submitted for 1,395 admissions (87.7%) and 1,316 discharges (88.4%). Number of admissions and discharges among the Under 65 population increase with age across the 18-34, 35-44, 45-54, and 55-64 age groups.

The majority of Delaware nursing home admitted at least one patient under the age of 65 in 2019. Eleven private facilities (NCC: 8; Kent: 1; Sussex: 2) and one public facility reported zero admissions among the Under 65 population in 2019 (refer to Tables 13 and 13.1 for more information). Nine private facilities (NCC: 7; Sussex: 2) reported zero discharges among the Under 65 population in 2019 (refer to Tables 16 and 16.1 for more information).

As shown below in Figure A1, apart from the 35-44 sub-cohort, White nursing home patients accounted for a larger share of 2019 admissions among sub-cohorts under the age of 65. Similar trends were observed for 2019 discharges among the Under 65 population (Figure A2).

Figure A1: Racial Breakdown of Delaware Nursing Home Admissions among the Under 65 Patient Population, by Age, 2019

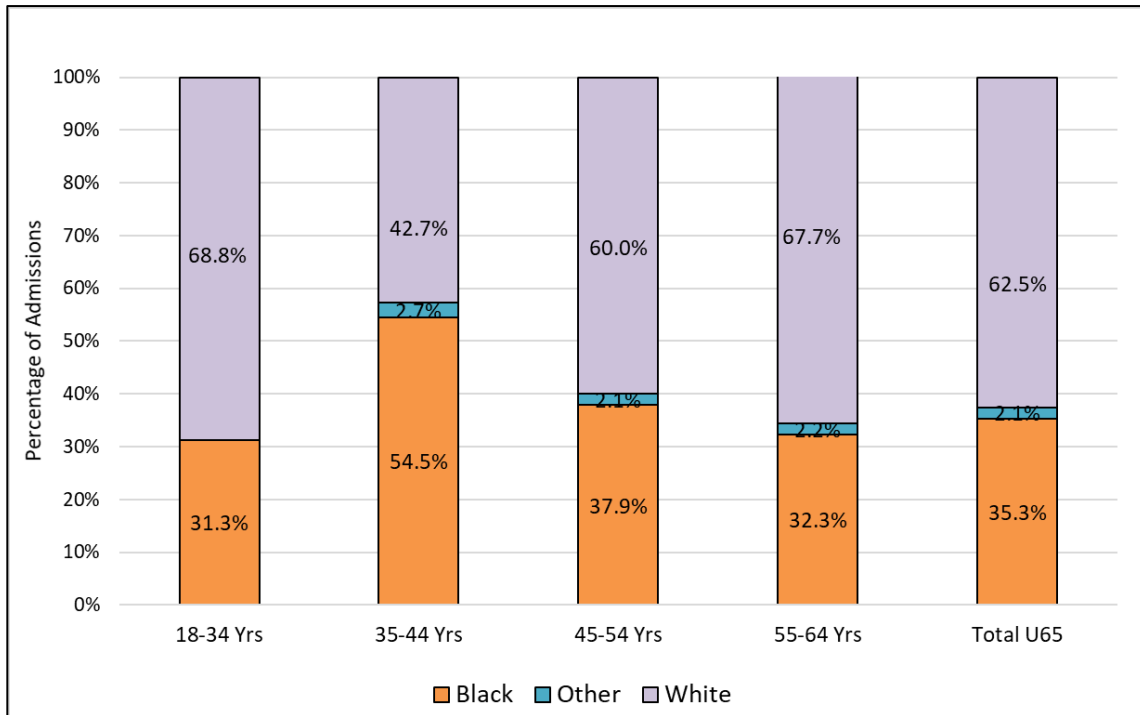


Figure A2: Racial Breakdown of Delaware Nursing Home Discharges among the Under 65 Patient Population, by Age, 2019

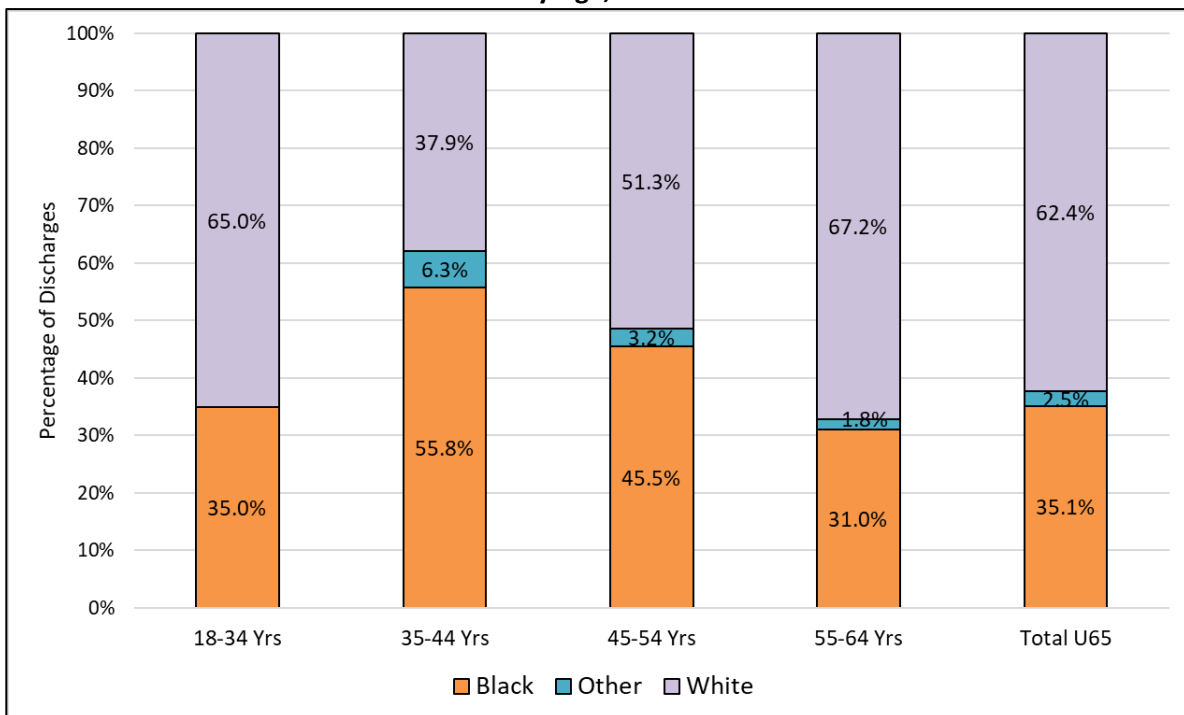


Table A1: Private Nursing Home Admissions among the Under 65 Patient Population, by Age Cohort, 2019

	18-34		35-44		45-54		55-64		Total U65: Partial Data	Total U65
	Male	Female	Male	Female	Male	Female	Male	Female		
New Castle	2	4	54	10	61	77	238	278	724	862
Kent	1	0	3	7	16	18	115	147	307	325
Sussex	4	5	10	26	34	29	133	122	363	402
All Private Facilities	7	9	67	43	111	124	486	547	1,394	1,589
Public Facilities	0	0	0	0	0	0	0	1	1	1
Total	7	9	67	43	111	124	486	548	1,395	1,590

Note: Table includes partial data for ages 18-34, 35-44, 45-54, and 55-64 due to a change in data collection procedures in 2019.

Table A2: Private Nursing Home Discharges among the Under 65 Patient Population, by Age Cohort, 2019

	18-34		35-44		45-54		55-64		Total U65: Partial Data	Total U65
	Male	Female	Male	Female	Male	Female	Male	Female		
New Castle	12	19	34	18	26	76	232	260	677	790
Kent	1	0	2	7	15	22	102	136	285	302
Sussex	3	5	11	22	27	20	142	115	345	386
All Private Facilities	16	24	47	47	68	118	476	511	1,307	1,478
Public Facilities	0	0	1	0	1	0	6	1	9	10
Total	16	24	48	47	69	118	482	512	1,316	1,488

Note: Table includes partial data for ages 18-34, 35-44, 45-54, and 55-64 due to a change in data collection procedures in 2019.

APPENDIX B: 2019 FACILITY CHANGES

The chart below reflects all major changes to Delaware nursing homes that occurred in 2019, including the opening of any new facilities, as well as increases and/or decreases in facilities' bed counts.

Table B1: 2019 Delaware Nursing Homes Changes by Facility Name

Facility	Change	Date of Change
WillowBrooke Court County House	In July 2019, WillowBrooke Court Country House decreased its licensed SNF bed count from 60 to 48	July 2019