

**2019 DELAWARE ASSISTED LIVING AND REST RESIDENTIAL  
UTILIZATION STATISTICAL REPORT**

**Delaware Health and Social Services  
Health Care Commission  
410 Federal Street  
Dover, DE 19901**



*DELAWARE HEALTH AND SOCIAL SERVICES*

## EXECUTIVE SUMMARY

In 2019, 32 private assisted living facilities and two private rest residential facilities were operational in the State of Delaware. Delaware has no public assisted living or rest residential (AL/RR) facilities. Delaware's 34 AL/RR facilities operated 1,922 units and 2,254 licensed beds in 2019. Most AL/RR facilities (N=24) are in New Castle County; Kent and Sussex County are home to four and six AL/RR facilities, respectively. Similarly, New Castle County accounted for 61.7% of licensed AL/RR beds in 2019; Kent and Sussex Counties accounted for 16.8% and 21.5% of licensed AL/RR beds, respectively. In 2019, AL/RR facilities in New Castle, Kent, and Sussex Counties operated at 76.6%, 76.3%, and 78.6% occupancy, respectively.

Statewide, 896 residents moved into AL/RR facilities in 2019 (32.5% male; 67.5% female). Ninety-five percent of 2019 move-ins were accounted for by White residents. The largest proportion of resident move-ins (65.7%) represented residents transitioning to an AL/RR facility from their own home or a relative's home. In the same year, 857 residents moved out of AL/RR facilities. White residents accounted for 95.9% of 2019 move-outs. The largest proportion of resident move-outs (40.8%) were due to death. Thirty-three percent of move-outs represented AL/RR residents transitioning from an AL/RR to a nursing home facility. Most move-ins (58.7%) and move-outs (71.1%) represented adults age 85 or older.

The Delaware Health Care Commission (DHCC) continues to monitor annual AL/RR residency and occupation data to identify newly-emerging trends pertaining to long-term care and rehabilitations services within Delaware. Long-term care utilization surveillance includes monitoring projected changes in population size at the county and state levels. The growing size and the changing demographics of Delaware's population are important for understanding the distribution of AL/RR facilities, the number of licensed AL/RR beds, and their utilization.

Between 2020 and 2050, Delaware's total population is expected to increase 7.6% (from 977,780 in 2020 to 1,051,762 in 2050). Overall population growth is distributed unevenly across Delaware's counties (New Castle: 2.3%; Kent: 5.4%; Sussex: 21.9%). Projected population growth is more dramatic among older Delawareans. From 2020 to 2050, the statewide population of Delawareans age 65 and older is expected to increase 39.2% (from 185,011 to 257,590). Among this subpopulation, cohorts of the oldest Delawareans are expected to increase most rapidly in size. Between 2020 and 2050, statewide percentages of residents age 65-69, 75-79, 80-84, and 85+ are projected to increase 8.3%, 5.9%, 34.3%, 82.7%, and 153.6%, respectively.

**TABLE OF CONTENTS**

INTRODUCTION ..... 1

STATEWIDE POPULATION PROJECTIONS ..... 2

PART 1: 2019 DELAWARE AL/RR LANDSCAPE..... 5

NUMBER OF FACILITIES, UNITS, AND BEDS ..... 5

UTILIZATION ..... 6

OCCUPANCY ..... 6

RESIDENT MOVE-INS..... 6

RESIDENT MOVE-OUTS ..... 7

SOURCE OF REFERRAL AND MOVE-OUT DISPOSITION ..... 8

SOURCE OF PAYMENT ..... 8

PART 2: 2019 FACILITY-LEVEL AL/RR UTILIZATION STATISTICS..... 10

APPENDIX A: 2019 AL/RR TRENDS AMONG THE UNDER 65 POPULATION..... 37

## **ACKNOWLEDGEMENTS**

This report was funded by the Delaware Health and Social Services, Health Care Commission; it is the product of collaborative support from the Delaware Health Care Facilities Association, the Division of Services for Aging and Adults with Physical Disabilities, and all Delaware Assisted Living and Rest Residential Facilities. The Health Care Commission thanks these stakeholders and other subject matter experts who provided background information, analysis, and feedback to inform the development of this report.

## INTRODUCTION

This, the ninth edition of the Delaware Assisted Living and Rest Residential Utilization Statistical Report (DALRRUSR), summarizes 2019 data submitted by Delaware assisted living and rest residential (AL/RR) facilities. Information in this report is presented in accordance with Title 16, Chapter 20 of Delaware Code (Uniform Health Data):

*“It is the policy of this State to foster appropriate and efficient use of health-care resources by requiring information for evaluating utilization patterns and costs to the community and the State for healthcare services.*

*This information shall be available to health-care purchasers, health-care insurers, health-care providers, health-care planners, and the general public without compromise of patient confidentiality. Such information will improve decision making with regard to access, identified needs, patterns of health-care delivery, charges and use of health-care services.”*

*(16 DE Code §2001)*

AL/RR facilities are an important component of the long-term care (LTC) landscape, primarily serving the elderly and individuals with disabilities. AL/RR facilities are typically congregate residential settings with 24-hour services; their design generally minimizes the need to move and prioritizes residents’ quality of life, socialization, independence, and safety. AL/RR facilities strive to meet the social, emotional, intellectual, and spiritual health of residents, and provide a friendly and understanding atmosphere to maintain residents’ self-esteem and role as a contributing member of the community. AL facilities provide a combination of housing, supportive services, supervision, personal assistance, and health care services designed to meet residents’ needs for assistance with activities of daily living. Rest residential (RR) facilities provide resident beds and personal care services for individuals who are normally able to manage activities of daily living without assistance.

On a monthly basis, from January through December 2019, Delaware AL/RR facilities submitted utilization data to the Delaware Health Care Commission (DHCC). DHCC contacted facilities on the first day of each month via e-mail to request facility utilization data for the previous month; if a facility’s monthly data submission was delayed, follow-up contact was made via email and telephone. Upon initial data submission, DHCC converted the data to an electronic format and reviewed each facility’s report for internal consistency and monitoring. At the end of the reporting year, DHCC aggregated monthly data to yield annual estimates by facility and county.

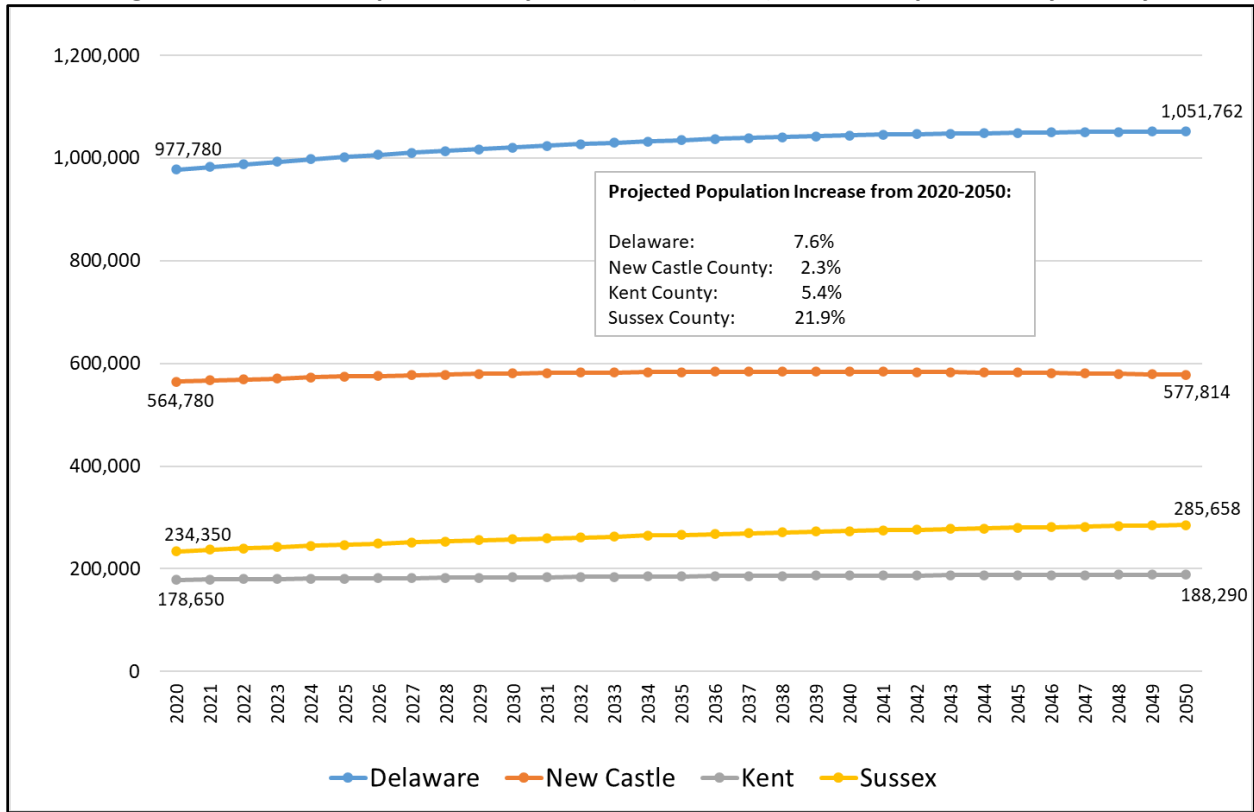
The DALRRUSR presents 2019 Delaware AL/RR data in two main sections. Part 1: Delaware Assisted Living and Rest Residential (AL/RR) Landscape highlights utilization trends at the state- and county-levels including annual move-ins and move-outs, resident billable days, occupancy rates, source of referral / move-out disposition, and source of payment. Part 2: Facility-Level Utilization Statistics presents these metrics at the facility-level. Percentages in any given data category may not sum to 100% due to numerical rounding.

## **STATEWIDE POPULATION PROJECTIONS**

The growing size and the changing demographics of Delaware's population are central to the understanding of the distribution of assisted living and rest residential facilities and the number of licensed beds. DHCC analyzed 2019 Delaware Population Consortium data to provide the context within which to evaluate Delaware's ability to meet assisted living and rest residential facility bed demand. Figure 1 shows the projected increase of Delaware's total population from 2020 to 2050. Figure 2 shows the projected population increase over the same time period among Delawareans age 65 and older.

Between 2020 and 2050, Delaware's total population is expected to increase 7.6% (from 977,780 in 2020 to 1,051,762 in 2050). Overall population growth is distributed unevenly across Delaware's counties. From 2020-2050, New Castle and Kent Counties are expected to experience a 2.3% and 5.4% increase in total population, respectively; total population growth for Sussex County is estimated at 21.9% for the same time period.

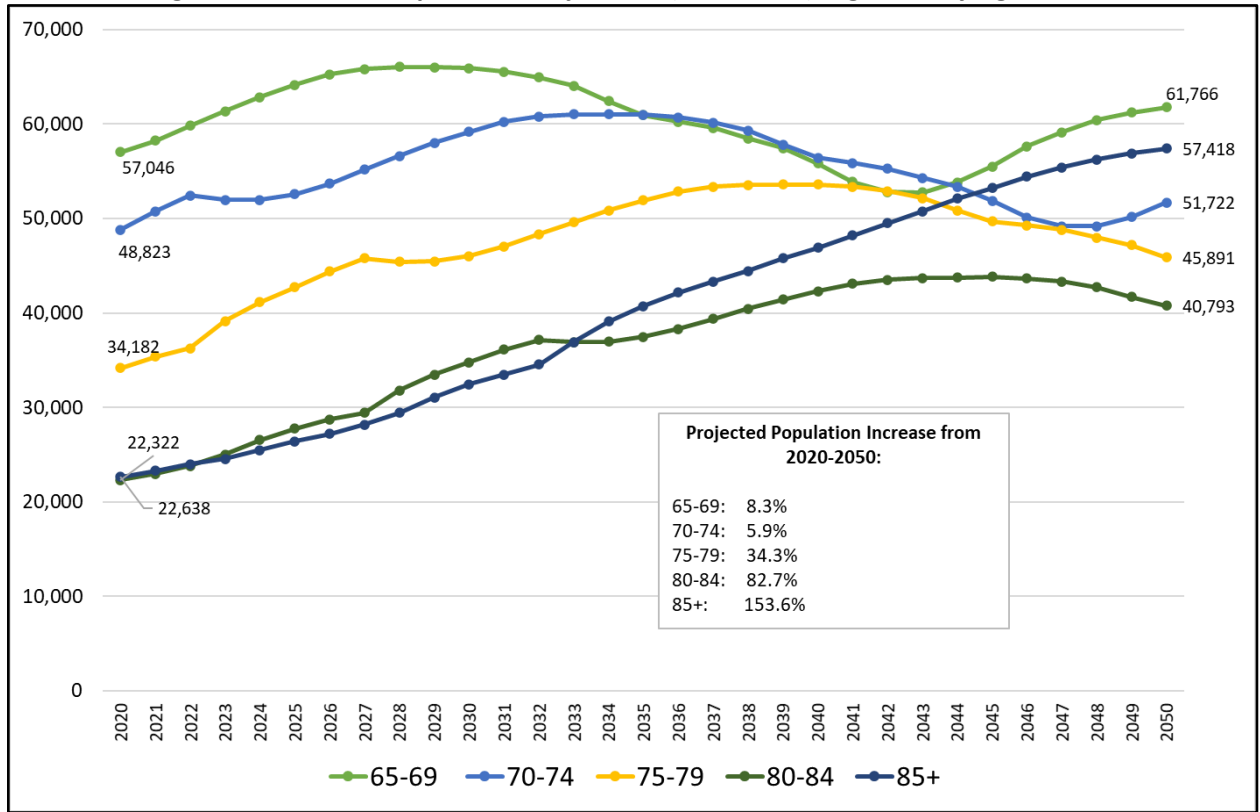
**Figure 1: Delaware Population Projections (2015-2050), Overall Population, by County**



Source: Annual Population Projections, Delaware Population Consortium, Version 2019.0, October 2019.

Projected population growth is more dramatic among older Delawareans. From 2020 to 2050, the statewide population of Delawareans age 65 and older is expected to increase 39.2% (from 185,011 to 257,590). Among this subpopulation, cohorts of the oldest Delawareans are expected to increase most rapidly in size. Between 2020 and 2050, statewide percentages of residents age 65-69, 75-79, 80-84, and 85+ are projected to increase 8.3%, 5.9%, 34.3%, 82.7%, and 153.6%, respectively (Figure 2).

**Figure 2: Delaware Population Projections (2020-2050), Age 65+, by Age Cohort**



Source: Annual Population Projections, Delaware Population Consortium, Version 2019.0, October 2019.



## PART 1: 2019 DELAWARE AL/RR LANDSCAPE

This section summarizes aggregate data for Delaware’s AL/RR facilities including the following metrics:

- i. Number of Facilities, Units, and Beds
- ii. Utilization
- iii. Occupancy
- iv. Resident Move-Ins
- v. Resident Move-Outs
- vi. Source of Referral / Move-Out Disposition
- vii. Source of Payment

Aggregate data for metrics i-v are summarized in Table 1 and described in further detail, below.

**Table 1: Delaware AL/RR Facility Characteristics, by County 2019**

	New Castle County	Kent County	Sussex County	Total: Delaware
<b>Number of Facilities</b>	24	4	6	34
<b>Number of Units</b>	1,219	267	436	1,922
<b>Number of Licensed Beds</b>	1,391	378	485	2,254
<b>Number of Billable Patient Days</b>	388,865	105,208	139,075	633,148
<b>Weighted Occupancy Rate</b>	76.6%	76.3%	78.6%	77.0%
<b>Number Move-Ins</b>	570	136	190	896
<b>Number Move-Outs</b>	539	164	154	857

### NUMBER OF FACILITIES, UNITS, AND BEDS

AL/RR facilities are comprised of units and rooms providing individual (and occasionally, dual occupancy) living space for residents. Facilities are licensed according to the number of resident beds and not by the number of units. In 2019, 32 private assisted living facilities and two private rest residential facilities were operational in the State of Delaware. Delaware has no public AL/RR facilities. Delaware’s 34 AL/RR facilities operated 1,922 units and 2,254 licensed beds in 2019. Most AL/RR facilities (N=24; 70.1%) are in New Castle County; Kent and Sussex County are home to four and six AL/RR facilities, respectively.

## **UTILIZATION**

A commonly-used measure of AL/RR utilization is the number of billable patient days generated by a facility over a given time period. A billable patient day represents a unit of time (i.e., one day) during which the facility's services are used by one resident. For example, if a facility has 100 residents on a day, the facility has generated 100 billable patient days for that 24-hour period. If a facility's number of billable patient days increases from one time period to the next, it is an indication that the facility has gained residents, residents are residing in the facility for longer periods of time, or a combination of these two factors. Mathematically, billable patient days per facility per year are calculated by summing each facility's monthly billable patient days over a 12-month period. In 2019, Delaware AL/RR facilities generated a total of 633,148 billable patient days.

## **OCCUPANCY**

A facility's occupancy rate reflects the percentage of available beds occupied by residents throughout the reporting year. Occupancy rates were weighted based on the number of days a facility was open during the reporting year. Mathematically, for facilities that were open 365 days of the reporting year,

Weighted Occupancy Rate = [(Number of Billable Patient Days) / (Number of Licensed Bed Days)] \* 100%.

If a facility was open fewer than 365 days of the reporting year, the same weighted occupancy formula was used with the exception that (Number of Licensed Bed Days) equaled the number of licensed beds multiplied by the actual number of days the facility was open. In 2019, AL/RR facilities in New Castle, Kent, and Sussex Counties operated at 76.6%, 76.3%, and 78.6% occupancy, respectively.

## **RESIDENT MOVE-INS**

Statewide, 896 residents moved into Delaware AL/RR facilities in 2019. White residents accounted for 94.5% of all 2019 Delaware AL/RR move-ins (Table 2). Black residents and residents of other races accounted for 5.1% and 0.33% of 2019 move-ins, respectively. Residents 75-84 years and 85 years or older accounted for 30.1% and 58.6%, respectively, of 2019 Delaware AL/RR move-ins. Ten percent of 2019 AL/RR move-ins were individuals ages 74 or younger. The youngest category of AL/RR residents – those under age 65 – accounted for 1.7% of 2019 move-ins. (Refer to Appendix A for further information on Delaware AL/RR admissions and discharges among the Under 65 population.)

**Table 2: Percentage of Delaware AL/RR Move-Ins, by Race and Age, 2019**

	Age Groups				Total Move-Ins (by Race)
	Under 65	65-74	75-84	85+	
<b>White</b>	1.4% (N=12)	8.6% (N=73)	31.3% (N=265)	58.7% (N=497)	94.5% (N=847)
<b>Black</b>	4.3% (N=2)	8.7% (N=4)	19.6% (N=9)	67.4% (N=31)	5.1% (N=46)
<b>Other Race</b>	33.3% (N=1)	33.3% (N=1)	0.0%	33.3% (N=1)	0.33% (N=3)
<b>Total</b>	1.7% (N=15)	8.3% (N=78)	30.1% (N=274)	58.6% (N=529)	100.0% (N=896)

## RESIDENT MOVE-OUTS

Statewide, 857 residents moved out of Delaware AL/RR facilities in 2019. Move-out statistics mirror move-in statistics in terms of patient race and age (Table 3). White residents accounted for 95.9% of Delaware AL/RR move-outs in 2019. Black residents and residents of other races accounted for 3.6% and 0.47% of 2019 AL/RR move-outs, respectively. Individuals 75-84 years and 85 years+ accounted for 21.5% and 71.1% of all Delaware AL/RR move-outs, respectively. Just under 8 percent of 2019 AL/RR move-outs were individuals ages age 74 or younger. The youngest category of AL/RR residents – those under age 65 – accounted for 3.2% of 2019 move-outs.

**Table 3: Percentage of Total Delaware AL/RR Move-Outs, by Race and Age, 2019**

	Age Groups				Total Move-Outs (by Race)
	Under 65	65-74	75-84	85+	
<b>White</b>	3.0% (N=25)	3.8% (N=31)	21.8% (N=179)	71.4% (N=587)	95.9% (N=822)
<b>Black</b>	3.2% (N=1)	16.1% (N=5)	16.1% (N=5)	64.5% (N=20)	3.6% (N=31)
<b>Other Race</b>	25.0% (N=1)	25.0% (N=1)	0.0% (N=0)	50.0% (N=2)	0.47% (N=4)
<b>Total</b>	3.2% (N=27)	4.3% (N=37)	21.5% (N=184)	71.1% (N=609)	100.0% (N=857)

## SOURCE OF REFERRAL AND MOVE-OUT DISPOSITION

Sixty-six percent of 2019 AL/RR move-ins represented individuals transitioning from their own home or a relative’s home (Table 4). Sixteen percent and 8.0% of move-ins represented individuals transitioning to a AL/RR facility from a nursing home or an acute care hospital, respectively. Forty-one percent of 2019 move-outs from AL/RR facilities represented resident deaths. One-third of AL/RR move-outs represented individuals transitioning from an AL/RR facility to a nursing home facility.

**Table 4: Percentage and Number of Delaware AL/RR Move-Ins (by Source of Referral) and Move-Outs (by Disposition), 2019**

	<b>Move-Ins By Source of Referral</b>	<b>Move-Outs By Disposition</b>
<b>Own or Relative’s Home</b>	65.7% (N=589)	11.7% (N=100)
<b>Acute Care Hospital</b>	8.1% (N=73)	5.1% (N=44)
<b>Nursing Home</b>	16.0% (N=143)	33.3% (N=285)
<b>Other AL/RR Facility</b>	7.8% (N=70)	7.0% (N=60)
<b>Death</b>	N/A	40.8% (N=350)
<b>Other</b>	2.3% (N=21)	2.1% (N=18)
<b>Total</b>	100.0% (N=896)	100.0% (N=857)

## SOURCE OF PAYMENT

In 2019, most AL/RR residents (88.1%) self-paid for their care (Table 5). In New Castle County, the proportion of AL/RR residents who self-paid for their care was comparatively higher than Kent and Sussex Counties (80.9% and 82.8%, respectively). Statewide, 11.2% of AL/RR residents utilized Medicaid to pay for their residential stays; the proportion of AL/RR residents who utilized Medicaid was comparatively lower in New Castle County (7.6%) than in Kent and Sussex Counties (16.1% and 17.2%, respectively).

**Table 5: Percentage of Delaware AL/RR Residents by Payment Source, 2019**

	New Castle County	Kent County	Sussex County	Total: Delaware
Self-Pay	92.1%	80.9%	82.8%	88.1%
Medicaid	7.6%	16.1%	17.2%	11.2%
Other Source of Payment	0.3%	3.0%	0.0%	0.7%
<b>Total</b>	<b>100.0%</b>	<b>100.0%</b>	<b>100.0%</b>	<b>100.0%</b>

## PART 2: 2019 FACILITY-LEVEL AL/RR UTILIZATION STATISTICS

**Table 6**  
**Total Billable Resident Days by Facility, 2019**

AL/RR Facility	2019 Resident Days	AL/RR Facility	2019 Resident Days
<b>New Castle County</b>		<b>Kent County</b>	
Arden Courts of Wilmington	18,866	Brookdale Dover	23,808
Brookdale Hockessin	17,932	Dover Place	28,247
Foorwood Manor	11,172	State Street Assisted Living	31,901
Foulk Manor North	12,069	Westminster Village	21,252
Foulk Manor South	17,000	<b>Kent County Total</b>	<b>105,208</b>
Gilpin Hall	4,406		
HarborChase Wilmington	19,231	<b>Sussex County</b>	
Ingleside Assisted Living	19,234	Brandywine at Seaside Pointe	44,892
Ivy Gables	5,354	Brandywine Living at Fenwick Island	30,042
Jeanne Jugan Residence	6,426	Milford Place	26,468
Lodge Lane	18,177	OakBridge Terrace at Manor House	17,117
Luther Towers I	8,012	Peach Tree Health Group	7,136
Millcroft Assisted Living	7,296	The Moorings at Lewes	13,420
OakBridge Terrace at Cokesbury	15,822	<b>Sussex County Total</b>	<b>139,075</b>
OakBridge Terrace at Country House	11,476		
Paramount Senior Living	28,153	<b>Total All Facilities</b>	<b>633,148</b>
Rockland Place	34,200		
Serenity Gardens	4,930		
Shipley Manor	4,653		
Somerford House	17,552		
Somerford Place	13,127		
Sunrise Senior Living of Wilmington	27,241		
The Lorelton	30,189		
The Summit	36,347		
<b>New Castle County Total</b>	<b>388,865</b>		

**Table 7  
Weighted Occupancy Rates by Facility and County, 2019**

<b>AL/RR Facility</b>	<b>Billable Resident Days 2019</b>	<b>Number of Licensed Beds 2019</b>	<b>Total Days Facility Open 2019</b>	<b>Licensed Bed Days 2019</b>	<b>Weighted Occupancy Rate 2019</b>
<b>New Castle County</b>					
Arden Courts of Wilmington	18,866	56	365	20,440	92.3%
Brookdale Hockessin	17,932	66	365	24,090	74.4%
Foorwood Manor	11,172	37	365	13,505	82.7%
Foulk Manor North	12,069	44	365	16,060	75.1%
Foulk Manor South	17,000	62	365	22,630	75.1%
Gilpin Hall	4,406	18	365	6,570	67.1%
HarborChase Wilmington	19,231	120	365	43,800	43.9%
Ingleside Assisted Living	19,234	60	365	21,900	87.8%
Ivy Gables	5,354	24	365	8,760	61.1%
Jeanne Jugan Residence	6,426	26	365	9,490	67.7%
Lodge Lane	18,177	60	365	21,900	83.0%
Luther Towers I	8,012	41	365	14,965	53.5%
Millcroft Assisted Living	7,296	28	365	10,220	71.4%
OakBridge Terrace at Cokesbury Village	15,822	49	365	17,885	88.5%
OakBridge Terrace at Country House	11,476	40	365	14,600	78.6%
Paramount Senior Living	28,153	111	365	40,515	69.5%
Rockland Place	34,200	95	365	34,675	98.6%
Serenity Gardens	4,930	16	365	5,840	84.4%
Shipley Manor	4,653	17	365	6,205	75.0%
Somerford House	17,552	59	365	21,535	81.5%
Somerford Place	13,127	52	365	18,980	69.2%
Sunrise Senior Living of Wilmington	27,241	90	365	32,850	82.9%
The Lorelton	30,189	100	365	36,500	82.7%
The Summit	36,347	120	365	43,800	83.0%
<b>New Castle County Total</b>	<b>388,865</b>	<b>1,391</b>	<b>365</b>	<b>507,715</b>	<b>76.6%</b>

**Table 7  
(Continued)  
Weighted Occupancy Rates by Facility and County, 2019**

AL/RR Facility	Billable Resident Days 2019	Number of Licensed Beds 2019	Total Days Facility Open 2019	Licensed Bed Days 2019	Weighted Occupancy Rate 2019
<b>Kent County</b>					
Brookdale Dover	23,808	96	365	35,040	67.9%
Dover Place	28,247	85	365	31,025	91.0%
State Street Assisted Living	31,901	98	365	35,770	89.2%
Westminster Village	21,252	99	365	36,135	58.8%
<b>Kent County Total</b>	<b>105,208</b>	<b>378</b>	<b>365</b>	<b>137,970</b>	<b>76.3%</b>
<b>Sussex County</b>					
Brandywine at Seaside Pointe	44,892	135	365	49,275	91.1%
Brandywine Living at Fenwick	30,042	125	365	45,625	65.8%
Milford Place	26,468	85	365	31,025	85.3%
OakBridge Terrace at Manor House	17,117	75	365	27,375	62.5%
Peach Tree Health Group	7,136	20	365	7,300	97.8%
The Moorings at Lewes	13,420	45	365	16,425	81.7%
<b>Sussex County Total</b>	<b>139,075</b>	<b>485</b>	<b>365</b>	<b>177,025</b>	<b>78.6%</b>
<b>Total All Facilities</b>	<b>633,148</b>	<b>2,254</b>	<b>365</b>	<b>822,710</b>	<b>77.0%</b>

Notes: Weighted occupancy rates for individual facilities are calculated as the ratio of Billable Resident Days and Licensed Bed Days. Licensed Bed Days are calculated as (Number of Licensed beds (as of December of the reporting year))\*(Total days the facility was open during the reporting year). Weighted occupancy rates at county, facility type, and state levels are calculated as the ratio of Billable Resident Days (sum of each facility in the category) and Licensed Bed Days (sum of each facility in the category).



**Table 8  
Resident Source of Payment by Facility and County, 2019**

<b>AL/RR Facility</b>	<b>Medicaid</b>	<b>Self-Pay</b>	<b>Other</b>	<b>Total</b>
<b>New Castle County</b>				
Arden Courts of Wilmington	0.0%	100.0%	0.0%	100.0%
Brookdale Hockessin	16.8%	83.2%	0.0%	100.0%
Foorwood Manor	0.0%	100.0%	0.0%	100.0%
Foulk Manor North	0.0%	100.0%	0.0%	100.0%
Foulk Manor South	0.0%	100.0%	0.0%	100.0%
Gilpin Hall	0.0%	100.0%	0.0%	100.0%
HarborChase Wilmington	0.0%	100.0%	0.0%	100.0%
Ingleside Assisted Living	57.0%	43.0%	0.0%	100.0%
Ivy Gables	0.0%	100.0%	0.0%	100.0%
Jeanne Jugan Residence	0.0%	100.0%	0.0%	100.0%
Lodge Lane	0.0%	100.0%	0.0%	100.0%
Luther Towers I	100.0%	0.0%	0.0%	100.0%
Millcroft Assisted Living	0.0%	100.0%	0.0%	100.0%
OakBridge Terrace at Cokesbury Village	0.0%	95.6%	4.4%	100.0%
OakBridge Terrace at Country House	0.0%	97.6%	2.4%	100.0%
Paramount Senior Living	11.7%	88.3%	0.0%	100.0%
Rockland Place	0.0%	100.0%	0.0%	100.0%
Serenity Gardens	0.0%	100.0%	0.0%	100.0%
Shiplely Manor	0.0%	100.0%	0.0%	100.0%
Somerford House	3.6%	96.1%	0.3%	100.0%
Somerford Place	9.5%	90.0%	0.5%	100.0%
Sunrise Senior Living of Wilmington	0.0%	100.0%	0.0%	100.0%
The Lorelton	2.3%	97.7%	0.0%	100.0%
The Summit	0.0%	100.0%	0.0%	100.0%
<b>New Castle County Total</b>	<b>7.6%</b>	<b>92.1%</b>	<b>0.3%</b>	<b>100.0%</b>

**Table 8  
(Continued)  
Resident Source of Payment, by Facility and County, 2019**

AL/RR Facility	Medicaid	Self-Pay	Other	Total
<b>Kent County</b>				
Brookdale Dover	37.5%	62.5%	0.0%	100.0%
Dover Place	14.6%	85.4%	0.0%	100.0%
State Street Assisted Living	12.6%	87.4%	0.0%	100.0%
Westminster Village	0.0%	84.9%	15.1%	100.0%
<b>Kent County Total</b>	<b>16.1%</b>	<b>80.9%</b>	<b>3.0%</b>	<b>100.0%</b>
<b>Sussex County</b>				
Brandywine at Seaside Pointe	14.6%	85.4%	0.0%	100.0%
Brandywine Living at Fenwick Island	16.8%	83.2%	0.0%	100.0%
Milford Place	19.3%	80.7%	0.0%	100.0%
OakBridge Terrace at Manor House	0.0%	99.8%	0.2%	100.0%
Peach Tree Health Group	100.0%	0.0%	0.0%	100.0%
The Moorings at Lewes	0.0%	100.0%	0.0%	100.0%
<b>Sussex County Total</b>	<b>17.2%</b>	<b>82.8%</b>	<b>0.0%</b>	<b>100.0%</b>
<b>Total All Facilities</b>	<b>11.2%</b>	<b>88.1%</b>	<b>0.7%</b>	<b>100.0%</b>

Notes: The "other" payment category includes charitable pay, partial pay, private insurance, Veterans benefits, out-of-state Medicaid, and, in some cases, residents for whom medical status was pending at admissions.

**Table 9  
Number of Move-Ins by Age, Gender, County and Facility, 2019**

AL/RR Facility	<65 Male	< 65 Female	65-74 Male	65-74 Female	75-84 Male	75-84 Female	85+ Male	85+ Female	Total Male	Total Female	Total M+F
<b>New Castle County</b>											
Arden Courts of Wilmington	0	0	8	4	14	2	10	12	32	18	50
Brookdale Hockessin	0	1	0	2	4	7	5	15	9	25	34
Foorwood Manor	0	0	0	0	0	0	0	20	0	20	20
Foulk Manor North	0	1	1	3	5	4	9	12	15	20	35
Foulk Manor South	0	0	0	1	2	4	4	15	6	20	26
Gilpin Hall	0	0	0	0	2	0	0	5	2	5	7
HarborChase Wilmington	0	0	2	4	2	8	9	36	13	48	61
Ingleside Assisted Living	1	1	4	4	2	2	0	5	7	12	19
Ivy Gables	0	0	0	0	0	1	2	10	2	11	13
Jeanne Jugan Residence	0	0	1	0	0	0	0	0	1	0	1
Lodge Lane	0	0	2	2	3	2	5	13	10	17	27
Luther Towers I	0	0	1	0	0	5	2	1	3	6	9
Millcroft Assisted Living	0	0	2	2	2	2	2	2	6	6	12
OakBridge Terrace at Cokesbury Village	0	0	0	0	0	1	4	9	4	10	14
OakBridge Terrace at Country House	0	1	0	1	4	6	10	14	14	22	36
Paramount Senior Living	0	0	3	9	9	11	1	3	13	23	36
Rockland Place	0	0	0	0	0	0	6	12	6	12	18
Serenity Gardens	1	0	0	2	0	1	2	3	3	6	9
Shipley Manor	0	0	0	0	0	0	4	4	4	4	8
Somerford House	0	0	1	0	5	7	6	8	12	15	27
Somerford Place	0	0	0	3	3	4	3	9	6	16	22
Sunrise Senior Living of Wilmington	0	0	0	0	2	6	2	12	4	18	22
The Lorelton	0	0	0	0	5	8	6	18	11	26	37
The Summit	1	0	3	0	3	12	5	3	12	15	27
<b>New Castle County Total</b>	<b>3</b>	<b>4</b>	<b>28</b>	<b>37</b>	<b>67</b>	<b>93</b>	<b>97</b>	<b>241</b>	<b>195</b>	<b>375</b>	<b>570</b>

**Table 9  
(Continued)  
Number of Move-Ins by Age, Gender, County and Facility, 2019**

AL/RR Facility	<65 Male	< 65 Female	65-74 Male	65-74 Female	75-84 Male	75-84 Female	85+ Male	85+ Female	Total Male	Total Female	Total M+F
<b>Kent County</b>											
Brookdale Dover	0	1	2	2	2	2	2	13	6	18	24
Dover Place	0	0	0	1	3	5	3	8	6	14	20
State Street Assisted Living	0	0	0	1	8	13	13	23	21	37	58
Westminster Village	0	0	1	0	2	8	3	20	6	28	34
<b>Kent County Total</b>	<b>0</b>	<b>1</b>	<b>3</b>	<b>4</b>	<b>15</b>	<b>28</b>	<b>21</b>	<b>64</b>	<b>39</b>	<b>97</b>	<b>136</b>
<b>Sussex County</b>											
Brandywine at Seaside Pointe	1	0	3	3	15	19	4	17	23	39	62
Brandywine Living at Fenwick	0	1	0	0	2	6	7	22	9	29	38
Milford Place	0	2	0	0	5	10	6	14	11	26	37
OakBridge Terrace at Manor House	0	0	0	0	2	4	5	16	7	20	27
Peach Tree Health Group	3	0	0	0	0	0	0	0	3	0	3
The Moorings at Lewes	0	0	0	0	1	7	3	12	4	19	23
<b>Sussex County Total</b>	<b>4</b>	<b>3</b>	<b>3</b>	<b>3</b>	<b>25</b>	<b>46</b>	<b>25</b>	<b>81</b>	<b>57</b>	<b>133</b>	<b>190</b>
<b>Total All Facilities</b>	<b>7</b>	<b>8</b>	<b>34</b>	<b>44</b>	<b>107</b>	<b>167</b>	<b>143</b>	<b>386</b>	<b>291</b>	<b>605</b>	<b>896</b>

**Table 10  
Percentage of Move-Ins by Age, County and Facility, 2019**

<b>AL/RR Facility</b>	<b>Under 65</b>	<b>65-74</b>	<b>75-84</b>	<b>85+</b>	<b>Total</b>
<b>New Castle County</b>					
Arden Courts of Wilmington	0.0%	24.0%	32.0%	44.0%	100.0%
Brookdale Hockessin	2.9%	5.9%	32.4%	58.8%	100.0%
Foorwood Manor	0.0%	0.0%	0.0%	100.0%	100.0%
Foulk Manor North	2.9%	11.4%	25.7%	60.0%	100.0%
Foulk Manor South	0.0%	3.8%	23.1%	73.1%	100.0%
Gilpin Hall	0.0%	0.0%	28.6%	71.4%	100.0%
HarborChase Wilmington	0.0%	9.8%	16.4%	73.8%	100.0%
Ingleside Assisted Living	10.5%	42.1%	21.1%	26.3%	100.0%
Ivy Gables	0.0%	0.0%	7.7%	92.3%	100.0%
Jeanne Jugan Residence	0.0%	100.0%	0.0%	0.0%	100.0%
Lodge Lane	0.0%	14.8%	18.5%	66.7%	100.0%
Luther Towers I	0.0%	11.1%	55.6%	33.3%	100.0%
Millcroft Assisted Living	0.0%	33.3%	33.3%	33.3%	100.0%
OakBridge Terrace at Cokesbury Village	0.0%	0.0%	7.1%	92.9%	100.0%
OakBridge Terrace at Country House	2.8%	2.8%	27.8%	66.7%	100.0%
Paramount Senior Living	0.0%	33.3%	55.6%	11.1%	100.0%
Rockland Place	0.0%	0.0%	0.0%	100.0%	100.0%
Serenity Gardens	11.1%	22.2%	11.1%	55.6%	100.0%
Shipleigh Manor	0.0%	0.0%	0.0%	100.0%	100.0%
Somerford House	0.0%	3.7%	44.4%	51.9%	100.0%
Somerford Place	0.0%	13.6%	31.8%	54.5%	100.0%
Sunrise Senior Living of Wilmington	0.0%	0.0%	36.4%	63.6%	100.0%
The Lorelton	0.0%	0.0%	35.1%	64.9%	100.0%
The Summit	3.7%	11.1%	55.6%	29.6%	100.0%
<b>New Castle County Total</b>	<b>1.2%</b>	<b>11.4%</b>	<b>28.1%</b>	<b>59.3%</b>	<b>100.0%</b>

**Table 10  
(Continued)  
Percentage of Move-Ins by Age, County and Facility, 2019**

AL/RR Facility	Under 65	65-74	75-84	85+	Total
<b>Kent County</b>					
Brookdale Dover	4.2%	16.7%	16.7%	62.5%	100.0%
Dover Place	0.0%	5.0%	40.0%	55.0%	100.0%
State Street Assisted Living	0.0%	1.7%	36.2%	62.1%	100.0%
Westminster Village	0.0%	2.9%	29.4%	67.6%	100.0%
<b>Kent County Total</b>	<b>0.7%</b>	<b>5.1%</b>	<b>31.6%</b>	<b>62.5%</b>	<b>100.0%</b>
<b>Sussex County</b>					
Brandywine at Seaside Pointe	1.6%	9.7%	54.8%	33.9%	100.0%
Brandywine Living at Fenwick Island	2.6%	0.0%	21.1%	76.3%	100.0%
Milford Place	5.4%	0.0%	40.5%	54.1%	100.0%
OakBridge Terrace at Manor House	0.0%	0.0%	22.2%	77.8%	100.0%
Peach Tree Health Group	100.0%	0.0%	0.0%	0.0%	100.0%
The Moorings at Lewes	0.0%	0.0%	34.8%	65.2%	100.0%
<b>Sussex County Total</b>	<b>3.7%</b>	<b>3.2%</b>	<b>37.4%</b>	<b>55.8%</b>	<b>100.0%</b>
<b>Total All Facilities</b>	<b>1.7%</b>	<b>8.7%</b>	<b>30.6%</b>	<b>59.0%</b>	<b>100.0%</b>

**Table 11  
Percentage of Move-Ins by Gender, County and Facility, 2019**

<b>AL/RR Facility</b>	<b>Male</b>	<b>Female</b>	<b>AL/RR Facility</b>	<b>Male</b>	<b>Female</b>
<b>New Castle County</b>			<b>Kent County</b>		
Arden Courts of Wilmington	64.0%	36.0%	Brookdale Dover	25.0%	75.0%
Brookdale Hockessin	26.5%	73.5%	Dover Place	30.0%	70.0%
Foorwood Manor	0.0%	100.0%	State Street Assisted Living	36.2%	63.8%
Foulk Manor North	42.9%	57.1%	Westminster Village	17.6%	82.4%
Foulk Manor South	23.1%	76.9%	<b>Kent County Total</b>	<b>28.7%</b>	<b>71.3%</b>
Gilpin Hall	28.6%	71.4%			
HarborChase Wilmington	21.3%	78.7%	<b>Sussex County</b>		
Ingleside Assisted Living	36.8%	63.2%	Brandywine at Seaside Pointe	37.1%	62.9%
Ivy Gables	15.4%	84.6%	Brandywine Living at Fenwick Island	23.7%	76.3%
Jeanne Jugan Residence	100.0%	0.0%	Milford Place	29.7%	70.3%
Lodge Lane	37.0%	63.0%	OakBridge Terrace at Manor House	25.9%	74.1%
Luther Towers I	33.3%	66.7%	Peach Tree Health Group	100.0%	0.0%
Millcroft Assisted Living	50.0%	50.0%	The Moorings at Lewes	17.4%	82.6%
OakBridge Terrace at Cokesbury Village	28.6%	71.4%	<b>Sussex County Total</b>	<b>30.0%</b>	<b>70.0%</b>
OakBridge Terrace at Country House	38.9%	61.1%			
Paramount Senior Living	36.1%	63.9%	<b>Total All Facilities</b>	<b>32.5%</b>	<b>67.5%</b>
Rockland Place	33.3%	66.7%			
Serenity Gardens	33.3%	66.7%			
Shipleigh Manor	50.0%	50.0%			
Somerford House	44.4%	55.6%			
Somerford Place	27.3%	72.7%			
Sunrise Senior Living of Wilmington	18.2%	81.8%			
The Lorelton	29.7%	70.3%			
The Summit	44.4%	55.6%			
<b>New Castle County Total</b>	<b>34.2%</b>	<b>65.8%</b>			

**Table 12  
Number of Move-Ins by Source of Referral, 2019**

AL/RR Facility	Own or Relatives' Home	Acute Care Hospital	Nursing Home	Other AL/RR	Other	Total
<b>New Castle County</b>						
Arden Courts of Wilmington	18	10	10	6	6	50
Brookdale Hockessin	14	0	18	1	1	34
Foorwood Manor	8	0	12	0	0	20
Foulk Manor North	18	7	4	6	0	35
Foulk Manor South	8	1	10	5	2	26
Gilpin Hall	7	0	0	0	0	7
HarborChase Wilmington	36	0	10	15	0	61
Ingleside Assisted Living	8	4	0	0	7	19
Ivy Gables	7	0	6	0	0	13
Jeanne Jugan Residence	1	0	0	0	0	1
Lodge Lane	16	0	7	3	1	27
Luther Towers I	6	0	1	0	2	9
Millcroft Assisted Living	12	0	0	0	0	12
OakBridge Terrace at Cokesbury Village	13	0	1	0	0	14
OakBridge Terrace at Country House	7	10	19	0	0	36
Paramount Senior Living	28	2	0	6	0	36
Rockland Place	12	0	0	6	0	18
Serenity Gardens	1	2	5	0	1	9
Shipley Manor	5	1	1	1	0	8
Somerford House	22	4	0	1	0	27
Somerford Place	13	6	0	3	0	22
Sunrise Senior Living of Wilmington	22	0	0	0	0	22
The Lorelton	28	1	6	2	0	37
The Summit	25	0	1	1	0	27
<b>New Castle County Total</b>	<b>335</b>	<b>48</b>	<b>111</b>	<b>56</b>	<b>20</b>	<b>570</b>



**Table 12**  
**(Continued)**  
**Number of Move-Ins by Source of Referral, 2019**

AL/RR Facility	Own or Relatives' Home	Acute Care Hospital	Nursing Home	Other AL/RR	Other	Total
<b>Kent County</b>						
Brookdale Dover	0	12	12	0	0	24
Dover Place	18	1	0	1	0	20
State Street Assisted Living	50	0	5	3	0	58
Westminster Village	34	0	0	0	0	34
<b>Kent County Total</b>	<b>102</b>	<b>13</b>	<b>17</b>	<b>4</b>	<b>0</b>	<b>136</b>
<b>Sussex County</b>						
Brandywine at Seaside Pointe	52	6	1	3	0	62
Brandywine Living at Fenwick Island	33	2	0	3	0	38
Milford Place	28	4	3	2	0	37
OakBridge Terrace at Manor House	24	0	2	1	0	27
Peach Tree Health Group	1	0	1	1	0	3
The Moorings at Lewes	14	0	8	0	1	23
<b>Sussex County Total</b>	<b>152</b>	<b>12</b>	<b>15</b>	<b>10</b>	<b>1</b>	<b>190</b>
<b>Total All Facilities</b>	<b>589</b>	<b>73</b>	<b>143</b>	<b>70</b>	<b>21</b>	<b>896</b>

**Table 13**  
**Percentage of Move-Ins by Source of Referral, County and Facility, 2019**

AL/RR Facility	Own or Relatives' Home	Acute Care Hospital	Nursing Home	Other AL/RR	Other	Total
<b>New Castle County</b>						
Arden Courts of Wilmington	36.0%	20.0%	20.0%	12.0%	12.0%	100.0%
Brookdale Hockessin	41.2%	0.0%	52.9%	2.9%	2.9%	100.0%
Foorwood Manor	40.0%	0.0%	60.0%	0.0%	0.0%	100.0%
Foulk Manor North	51.4%	20.0%	11.4%	17.1%	0.0%	100.0%
Foulk Manor South	30.8%	3.8%	38.5%	19.2%	7.7%	100.0%
Gilpin Hall	100.0%	0.0%	0.0%	0.0%	0.0%	100.0%
HarborChase Wilmington	59.0%	0.0%	16.4%	24.6%	0.0%	100.0%
Ingleside Assisted Living	42.1%	21.1%	0.0%	0.0%	36.8%	100.0%
Ivy Gables	53.8%	0.0%	46.2%	0.0%	0.0%	100.0%
Jeanne Jugan Residence	100.0%	0.0%	0.0%	0.0%	0.0%	100.0%
Lodge Lane	59.3%	0.0%	25.9%	11.1%	3.7%	100.0%
Luther Towers I	66.7%	0.0%	11.1%	0.0%	22.2%	100.0%
Millcroft Assisted Living	100.0%	0.0%	0.0%	0.0%	0.0%	100.0%
OakBridge Terrace at Cokesbury Village	92.9%	0.0%	7.1%	0.0%	0.0%	100.0%
OakBridge Terrace at Country House	19.4%	27.8%	52.8%	0.0%	0.0%	100.0%
Paramount Senior Living	77.8%	5.6%	0.0%	16.7%	0.0%	100.0%
Rockland Place	66.7%	0.0%	0.0%	33.3%	0.0%	100.0%
Serenity Gardens	11.1%	22.2%	55.6%	0.0%	11.1%	100.0%
Shipley Manor	62.5%	12.5%	12.5%	12.5%	0.0%	100.0%
Somerford House	81.5%	14.8%	0.0%	3.7%	0.0%	100.0%
Somerford Place	59.1%	27.3%	0.0%	13.6%	0.0%	100.0%
Sunrise Senior Living of Wilmington	100.0%	0.0%	0.0%	0.0%	0.0%	100.0%
The Lorelton	75.7%	2.7%	16.2%	5.4%	0.0%	100.0%
The Summit	92.6%	0.0%	3.7%	3.7%	0.0%	100.0%
<b>New Castle County Total</b>	<b>58.8%</b>	<b>8.4%</b>	<b>19.5%</b>	<b>9.8%</b>	<b>3.5%</b>	<b>100.0%</b>

**Table 13**  
**(Continued)**  
**Percentage of Move-Ins by Source of Referral, County and Facility, 2019**

<b>AL/RR Facility</b>	<b>Own or Relatives' Home</b>	<b>Acute Care Hospital</b>	<b>Nursing Home</b>	<b>Other AL/RR</b>	<b>Other</b>	<b>Total</b>
<b>Kent County</b>						
Brookdale Dover	0.0%	50.0%	50.0%	0.0%	0.0%	100.0%
Dover Place	90.0%	5.0%	0.0%	5.0%	0.0%	100.0%
State Street Assisted Living	86.2%	0.0%	8.6%	5.2%	0.0%	100.0%
Westminster Village	100.0%	0.0%	0.0%	0.0%	0.0%	100.0%
<b>Kent County Total</b>	<b>75.0%</b>	<b>9.6%</b>	<b>12.5%</b>	<b>2.9%</b>	<b>0.0%</b>	<b>100.0%</b>
<b>Sussex County</b>						
Brandywine at Seaside Pointe	83.9%	9.7%	1.6%	4.8%	0.0%	100.0%
Brandywine Living at Fenwick Island	86.8%	5.3%	0.0%	7.9%	0.0%	100.0%
Milford Place	75.7%	10.8%	8.1%	5.4%	0.0%	100.0%
OakBridge Terrace at Manor House	88.9%	0.0%	7.4%	3.7%	0.0%	100.0%
Peach Tree Health Group	33.3%	0.0%	33.3%	33.3%	0.0%	100.0%
The Moorings at Lewes	60.9%	0.0%	34.8%	0.0%	4.3%	100.0%
<b>Sussex County Total</b>	<b>80.0%</b>	<b>6.3%</b>	<b>7.9%</b>	<b>5.3%</b>	<b>0.5%</b>	<b>100.0%</b>
<b>Total All Facilities</b>	<b>65.7%</b>	<b>8.1%</b>	<b>16.0%</b>	<b>7.8%</b>	<b>2.3%</b>	<b>100.0%</b>

**Table 14**  
**Number of Move-Ins by County and State of Residence, 2019**

AL/RR Facility	NCC	Kent	Sussex	MD	NJ	PA	Other	Total
<b>New Castle County</b>								
Arden Courts of Wilmington	36	4	0	2	0	8	0	50
Brookdale Hockessin	26	1	3	0	0	1	3	34
Foorwood Manor	20	0	0	0	0	0	0	20
Foulk Manor North	34	0	0	0	0	1	0	35
Foulk Manor South	20	1	0	0	0	3	2	26
Gilpin Hall	7	0	0	0	0	0	0	7
HarborChase Wilmington	48	1	0	0	4	4	4	61
Ingleside Assisted Living	16	0	0	2	0	1	0	19
Ivy Gables	12	0	0	0	0	1	0	13
Jeanne Jugan Residence	1	0	0	0	0	0	0	1
Lodge Lane	22	0	0	0	2	1	2	27
Luther Towers I	9	0	0	0	0	0	0	9
Millcroft Assisted Living	12	0	0	0	0	0	0	12
OakBridge Terrace at Cokesbury Village	14	0	0	0	0	0	0	14
OakBridge Terrace at Country House	34	0	0	0	0	2	0	36
Paramount Senior Living	36	0	0	0	0	0	0	36
Rockland Place	18	0	0	0	0	0	0	18
Serenity Gardens	8	1	0	0	0	0	0	9
Shipleigh Manor	8	0	0	0	0	0	0	8
Somerford House	27	0	0	0	0	0	0	27
Somerford Place	20	0	0	0	0	0	2	22
Sunrise Senior Living of Wilmington	22	0	0	0	0	0	0	22
The Lorelton	37	0	0	0	0	0	0	37
The Summit	23	0	0	3	1	0	0	27
<b>New Castle County Total</b>	<b>510</b>	<b>8</b>	<b>3</b>	<b>7</b>	<b>7</b>	<b>22</b>	<b>13</b>	<b>570</b>

**Table 14**  
**(Continued)**  
**Number of Move-Ins by County and State of Residence, 2019**

AL/RR Facility	NCC	Kent	Sussex	MD	NJ	PA	Other	Total
<b>Kent County</b>								
Brookdale Dover	0	24	0	0	0	0	0	24
Dover Place	1	17	0	1	0	0	1	20
State Street Assisted Living	0	55	0	0	2	0	1	58
Westminster Village	1	27	2	1	0	2	1	34
<b>Kent County Total</b>	<b>2</b>	<b>123</b>	<b>2</b>	<b>2</b>	<b>2</b>	<b>2</b>	<b>3</b>	<b>136</b>
<b>Sussex County</b>								
Brandywine at Seaside Pointe	2	1	45	7	0	1	6	62
Brandywine Living at Fenwick Island	3	0	15	12	1	3	4	38
Milford Place	2	5	24	1	0	2	3	37
OakBridge Terrace at Manor House	1	0	23	1	0	2	0	27
Peach Tree Health Group	0	0	2	0	0	0	1	3
The Moorings at Lewes	2	0	19	1	1	0	0	23
<b>Sussex County Total</b>	<b>10</b>	<b>6</b>	<b>128</b>	<b>22</b>	<b>2</b>	<b>8</b>	<b>14</b>	<b>190</b>
<b>Total All Facilities</b>	<b>522</b>	<b>137</b>	<b>133</b>	<b>31</b>	<b>11</b>	<b>32</b>	<b>30</b>	<b>896</b>

**Table 15**  
**Percentage of Move-Ins by County and State of Residence, 2019**

<b>AL/RR Facility</b>	<b>NCC</b>	<b>Kent</b>	<b>Sussex</b>	<b>MD</b>	<b>NJ</b>	<b>PA</b>	<b>Other</b>	<b>Total</b>
<b>New Castle County</b>								
Arden Courts of Wilmington	72.0%	8.0%	0.0%	4.0%	0.0%	16.0%	0.0%	100.0%
Brookdale Hockessin	76.5%	2.9%	8.8%	0.0%	0.0%	2.9%	8.8%	100.0%
Foorwood Manor	100.0%	0.0%	0.0%	0.0%	0.0%	0.0%	0.0%	100.0%
Foulk Manor North	97.1%	0.0%	0.0%	0.0%	0.0%	2.9%	0.0%	100.0%
Foulk Manor South	76.9%	3.8%	0.0%	0.0%	0.0%	11.5%	7.7%	100.0%
Gilpin Hall	100.0%	0.0%	0.0%	0.0%	0.0%	0.0%	0.0%	100.0%
HarborChase Wilmington	78.7%	1.6%	0.0%	0.0%	6.6%	6.6%	6.6%	100.0%
Ingleside Assisted Living	84.2%	0.0%	0.0%	10.5%	0.0%	5.3%	0.0%	100.0%
Ivy Gables	92.3%	0.0%	0.0%	0.0%	0.0%	7.7%	0.0%	100.0%
Jeanne Jugan Residence	100.0%	0.0%	0.0%	0.0%	0.0%	0.0%	0.0%	100.0%
Lodge Lane	81.5%	0.0%	0.0%	0.0%	7.4%	3.7%	7.4%	100.0%
Luther Towers I	100.0%	0.0%	0.0%	0.0%	0.0%	0.0%	0.0%	100.0%
Millcroft Assisted Living	100.0%	0.0%	0.0%	0.0%	0.0%	0.0%	0.0%	100.0%
OakBridge Terrace at Cokesbury Village	100.0%	0.0%	0.0%	0.0%	0.0%	0.0%	0.0%	100.0%
OakBridge Terrace at Country House	94.4%	0.0%	0.0%	0.0%	0.0%	5.6%	0.0%	100.0%
Paramount Senior Living	100.0%	0.0%	0.0%	0.0%	0.0%	0.0%	0.0%	100.0%
Rockland Place	100.0%	0.0%	0.0%	0.0%	0.0%	0.0%	0.0%	100.0%
Serenity Gardens	88.9%	11.1%	0.0%	0.0%	0.0%	0.0%	0.0%	100.0%
Shipley Manor	100.0%	0.0%	0.0%	0.0%	0.0%	0.0%	0.0%	100.0%
Somerford House	100.0%	0.0%	0.0%	0.0%	0.0%	0.0%	0.0%	100.0%
Somerford Place	90.9%	0.0%	0.0%	0.0%	0.0%	0.0%	9.1%	100.0%
Sunrise Senior Living of Wilmington	100.0%	0.0%	0.0%	0.0%	0.0%	0.0%	0.0%	100.0%
The Lorelton	100.0%	0.0%	0.0%	0.0%	0.0%	0.0%	0.0%	100.0%
The Summit	85.2%	0.0%	0.0%	11.1%	3.7%	0.0%	0.0%	100.0%
<b>New Castle County Total</b>	<b>89.5%</b>	<b>1.4%</b>	<b>0.5%</b>	<b>1.2%</b>	<b>1.2%</b>	<b>3.9%</b>	<b>2.3%</b>	<b>100.0%</b>

**Table 15  
(Continued)  
Percentage of Move-Ins by County and State of Residence, 2019**

AL/RR Facility	NCC	Kent	Sussex	MD	NJ	PA	Other	Total
<b>Kent County</b>								
Brookdale Dover	0.0%	100.0%	0.0%	0.0%	0.0%	0.0%	0.0%	100.0%
Dover Place	5.0%	85.0%	0.0%	5.0%	0.0%	0.0%	5.0%	100.0%
State Street Assisted Living	0.0%	94.8%	0.0%	0.0%	3.4%	0.0%	1.7%	100.0%
Westminster Village	2.9%	79.4%	5.9%	2.9%	0.0%	5.9%	2.9%	100.0%
<b>Kent County Total</b>	<b>1.5%</b>	<b>90.4%</b>	<b>1.5%</b>	<b>1.5%</b>	<b>1.5%</b>	<b>1.5%</b>	<b>2.2%</b>	<b>100.0%</b>
<b>Sussex County</b>								
Brandywine at Seaside Pointe	3.2%	1.6%	72.6%	11.3%	0.0%	1.6%	9.7%	100.0%
Brandywine Living at Fenwick Island	7.9%	0.0%	39.5%	31.6%	2.6%	7.9%	10.5%	100.0%
Milford Place	5.4%	13.5%	64.9%	2.7%	0.0%	5.4%	8.1%	100.0%
OakBridge Terrace at Manor House	3.7%	0.0%	85.2%	3.7%	0.0%	7.4%	0.0%	100.0%
Peach Tree Health Group	0.0%	0.0%	66.7%	0.0%	0.0%	0.0%	33.3%	100.0%
The Moorings at Lewes	8.7%	0.0%	82.6%	4.3%	4.3%	0.0%	0.0%	100.0%
<b>Sussex County Total</b>	<b>5.3%</b>	<b>3.2%</b>	<b>67.4%</b>	<b>11.6%</b>	<b>1.1%</b>	<b>4.2%</b>	<b>7.4%</b>	<b>100.0%</b>
<b>Total All Facilities</b>	<b>58.3%</b>	<b>15.3%</b>	<b>14.8%</b>	<b>3.5%</b>	<b>1.2%</b>	<b>3.6%</b>	<b>3.3%</b>	<b>100.0%</b>

**Table 16  
Number of Move-Outs by Age, Gender, County and Facility, 2019**

AL/RR Facility	<65 Male	< 65 Female	65-74 Male	65-74 Female	75-84 Male	75-84 Female	85+ Male	85+ Female	Total Male	Total Female	Total M+F
<b>New Castle County</b>											
Arden Courts of Wilmington	0	2	8	0	10	4	12	14	30	20	50
Brookdale Hockessin	0	4	1	2	6	1	5	12	12	19	31
Foorwood Manor	0	0	0	0	0	0	0	20	0	20	20
Foulk Manor North	0	0	0	3	2	4	8	16	10	23	33
Foulk Manor South	0	1	0	1	1	3	6	8	7	13	20
Gilpin Hall	0	0	0	0	1	0	0	2	1	2	3
HarborChase Wilmington	0	0	0	0	0	3	3	7	3	10	13
Ingleside Assisted Living	2	0	0	2	1	1	8	2	11	5	16
Ivy Gables	0	0	0	0	0	0	1	15	1	15	16
Jeanne Jugan Residence	0	0	0	0	0	4	3	2	3	6	9
Lodge Lane	0	0	3	1	3	4	5	7	11	12	23
Luther Towers I	0	0	1	0	0	3	5	2	6	5	11
Millcroft Assisted Living	0	0	0	0	12	0	0	0	12	0	12
OakBridge Terrace at Cokesbury Village	0	0	0	0	0	3	7	17	7	20	27
OakBridge Terrace at Country House	0	0	0	1	2	7	7	16	9	24	33
Paramount Senior Living	0	0	0	1	5	4	3	2	8	7	15
Rockland Place	0	0	0	0	0	0	6	30	6	30	36
Serenity Gardens	0	0	0	1	0	2	1	5	1	8	9
Shipleigh Manor	0	0	0	0	0	1	2	3	2	4	6
Somerford House	1	0	0	2	4	1	9	14	14	17	31
Somerford Place	0	0	0	0	1	5	6	16	7	21	28
Sunrise Senior Living of Wilmington	0	0	0	2	0	3	4	16	4	21	25
The Lorelton	0	0	1	0	2	9	3	15	6	24	30
The Summit	0	0	0	1	9	11	7	14	16	26	42
<b>New Castle County Total</b>	<b>3</b>	<b>7</b>	<b>14</b>	<b>17</b>	<b>59</b>	<b>73</b>	<b>111</b>	<b>255</b>	<b>187</b>	<b>352</b>	<b>539</b>



**Table 16  
(Continued)**

**Number of Move-Outs by Age, Gender, County and Facility, 2019**

<b>AL/RR Facility</b>	<b>&lt;65 Male</b>	<b>&lt; 65 Female</b>	<b>65-74 Male</b>	<b>65-74 Female</b>	<b>75-84 Male</b>	<b>75-84 Female</b>	<b>85+ Male</b>	<b>85+ Female</b>	<b>Total Male</b>	<b>Total Female</b>	<b>Total M+F</b>
<b>Kent County</b>											
Brookdale Dover	12	0	0	0	0	0	12	24	24	24	48
Dover Place	0	0	1	1	5	3	3	9	9	13	22
State Street Assisted Living	0	0	0	2	1	7	20	36	21	45	66
Westminster Village	0	0	0	0	0	5	3	20	3	25	28
<b>Kent County Total</b>	<b>12</b>	<b>0</b>	<b>1</b>	<b>3</b>	<b>6</b>	<b>15</b>	<b>38</b>	<b>89</b>	<b>57</b>	<b>107</b>	<b>164</b>
<b>Sussex County</b>											
Brandywine at Seaside Pointe	1	0	1	0	3	7	4	33	9	40	49
Brandywine Living at Fenwick Island	0	3	0	0	0	2	7	20	7	25	32
Milford Place	0	1	1	0	5	4	7	14	13	19	32
OakBridge Terrace at Manor House	0	0	0	0	1	1	10	12	11	13	24
Peach Tree Health Group	0	0	0	0	0	0	0	0	0	0	0
The Moorings at Lewes	0	0	0	0	3	5	1	8	4	13	17
<b>Sussex County Total</b>	<b>1</b>	<b>4</b>	<b>2</b>	<b>0</b>	<b>12</b>	<b>19</b>	<b>29</b>	<b>87</b>	<b>44</b>	<b>110</b>	<b>154</b>
<b>Total All Facilities</b>	<b>16</b>	<b>11</b>	<b>17</b>	<b>20</b>	<b>77</b>	<b>107</b>	<b>178</b>	<b>431</b>	<b>288</b>	<b>569</b>	<b>857</b>

**Table 17**  
**Percentage of Move-Outs by Age, Facility Type, County and Facility, 2019**

AL/RR Facility	Under 65	65-74	75-84	85+	Total
<b>New Castle County</b>					
Arden Courts of Wilmington	4.0%	16.0%	28.0%	52.0%	100.0%
Brookdale Hockessin	12.9%	9.7%	22.6%	54.8%	100.0%
Foorwood Manor	0.0%	0.0%	0.0%	100.0%	100.0%
Foulk Manor North	0.0%	9.1%	18.2%	72.7%	100.0%
Foulk Manor South	5.0%	5.0%	20.0%	70.0%	100.0%
Gilpin Hall	0.0%	0.0%	33.3%	66.7%	100.0%
HarborChase Wilmington	0.0%	0.0%	23.1%	76.9%	100.0%
Ingleside Assisted Living	12.5%	12.5%	12.5%	62.5%	100.0%
Ivy Gables	0.0%	0.0%	0.0%	100.0%	100.0%
Jeanne Jugan Residence	0.0%	0.0%	44.4%	55.6%	100.0%
Lodge Lane	0.0%	17.4%	30.4%	52.2%	100.0%
Luther Towers I	0.0%	9.1%	27.3%	63.6%	100.0%
Millcroft Assisted Living	0.0%	0.0%	100.0%	0.0%	100.0%
OakBridge Terrace at Cokesbury Village	0.0%	0.0%	11.1%	88.9%	100.0%
OakBridge Terrace at Country House	0.0%	3.0%	27.3%	69.7%	100.0%
Paramount Senior Living	0.0%	6.7%	60.0%	33.3%	100.0%
Rockland Place	0.0%	0.0%	0.0%	100.0%	100.0%
Serenity Gardens	0.0%	11.1%	22.2%	66.7%	100.0%
Shipleigh Manor	0.0%	0.0%	16.7%	83.3%	100.0%
Somerford House	3.2%	6.5%	16.1%	74.2%	100.0%
Somerford Place	0.0%	0.0%	21.4%	78.6%	100.0%
Sunrise Senior Living of Wilmington	0.0%	8.0%	12.0%	80.0%	100.0%
The Lorelton	0.0%	3.3%	36.7%	60.0%	100.0%
The Summit	0.0%	2.4%	47.6%	50.0%	100.0%
<b>New Castle County Total</b>	<b>1.9%</b>	<b>5.8%</b>	<b>24.5%</b>	<b>67.9%</b>	<b>100.0%</b>

**Table 17  
(Continued)**

**Percentage of Move-Outs by Age, Facility Type, County and Facility, 2019**

AL/RR Facility	Under 65	65-74	75-84	85+	Total
<b>Kent County</b>					
Brookdale Dover	25.0%	0.0%	0.0%	75.0%	100.0%
Dover Place	0.0%	9.1%	36.4%	54.5%	100.0%
State Street Assisted Living	0.0%	3.0%	12.1%	84.8%	100.0%
Westminster Village	0.0%	0.0%	17.9%	82.1%	100.0%
<b>Kent County Total</b>	<b>7.3%</b>	<b>2.4%</b>	<b>12.8%</b>	<b>77.4%</b>	<b>100.0%</b>
<b>Sussex County</b>					
Brandywine at Seaside Pointe	2.0%	2.0%	20.4%	75.5%	100.0%
Brandywine Living at Fenwick Island	9.4%	0.0%	6.3%	84.4%	100.0%
Milford Place	3.1%	3.1%	28.1%	65.6%	100.0%
OakBridge Terrace at Manor House	0.0%	0.0%	8.3%	91.7%	100.0%
Peach Tree Health Group	N/A	N/A	N/A	N/A	N/A
The Moorings at Lewes	0.0%	0.0%	47.1%	52.9%	100.0%
<b>Sussex County Total</b>	<b>3.2%</b>	<b>1.3%</b>	<b>20.1%</b>	<b>75.3%</b>	<b>100.0%</b>
<b>Total All Facilities</b>	<b>3.2%</b>	<b>4.3%</b>	<b>21.5%</b>	<b>71.1%</b>	<b>100.0%</b>

**Table 18**  
**Percentage of Move-Outs by Gender, Facility Type, County and Facility Name, 2019**

AL/RR Facility	Male	Female	AL/RR Facility	Male	Female
<b>New Castle County</b>			<b>Kent County</b>		
Arden Courts of Wilmington	60.0%	40.0%	Brookdale Dover	50.0%	50.0%
Brookdale Hockessin	38.7%	61.3%	Dover Place	40.9%	59.1%
Foorwood Manor	0.0%	100.0%	State Street Assisted Living	31.8%	68.2%
Foulk Manor North	30.3%	69.7%	Westminster Village	10.7%	89.3%
Foulk Manor South	35.0%	65.0%	<b>Kent County Total</b>	<b>34.8%</b>	<b>65.2%</b>
Gilpin Hall	33.3%	66.7%			
HarborChase Wilmington	23.1%	76.9%	<b>Sussex County</b>		
Ingleside Assisted Living	68.8%	31.3%	Brandywine at Seaside Pointe	18.4%	81.6%
Ivy Gables	6.3%	93.8%	Brandywine Living at Fenwick Island	21.9%	78.1%
Jeanne Jugan Residence	33.3%	66.7%	Milford Place	40.6%	59.4%
Lodge Lane	47.8%	52.2%	OakBridge Terrace at Manor House	45.8%	54.2%
Luther Towers I	54.5%	45.5%	Peach Tree Health Group	N/A	N/A
Millcroft Assisted Living	100.0%	0.0%	The Moorings at Lewes	23.5%	76.5%
OakBridge Terrace at Cokesbury Village	25.9%	74.1%	<b>Sussex County Total</b>	<b>28.6%</b>	<b>71.4%</b>
OakBridge Terrace at Country House	27.3%	72.7%			
Paramount Senior Living	53.3%	46.7%	<b>Total All Facilities</b>	<b>33.6%</b>	<b>66.4%</b>
Rockland Place	16.7%	83.3%			
Serenity Gardens	11.1%	88.9%			
Shiplely Manor	33.3%	66.7%			
Somerford House	45.2%	54.8%			
Somerford Place	25.0%	75.0%			
Sunrise Senior Living of Wilmington	16.0%	84.0%			
The Lorelton	20.0%	80.0%			
The Summit	38.1%	61.9%			
<b>New Castle County Total</b>	<b>34.7%</b>	<b>65.3%</b>			

**Table 19**  
**Number of Move-Outs by Disposition, Facility Type, County and Facility Name, 2019**

AL/RR Facility	Own or Relatives' Home	Acute Care Hospital	Nursing Home	Other AL/RR	Death	Other	Total
<b>New Castle County</b>							
Arden Courts of Wilmington	12	2	8	8	20	0	50
Brookdale Hockessin	3	0	15	3	10	0	31
Foorwood Manor	0	0	16	0	4	0	20
Foulk Manor North	5	4	12	7	5	0	33
Foulk Manor South	0	1	18	0	0	1	20
Gilpin Hall	0	0	2	1	0	0	3
HarborChase Wilmington	1	0	1	0	11	0	13
Ingleside Assisted Living	3	0	8	0	4	1	16
Ivy Gables	3	2	3	2	6	0	16
Jeanne Jugan Residence	0	0	8	1	0	0	9
Lodge Lane	2	0	11	0	9	1	23
Luther Towers I	5	2	2	0	2	0	11
Millcroft Assisted Living	0	0	12	0	0	0	12
OakBridge Terrace at Cokesbury Village	0	1	22	0	4	0	27
OakBridge Terrace at Country House	3	16	11	0	3	0	33
Paramount Senior Living	2	0	4	1	8	0	15
Rockland Place	6	6	0	12	12	0	36
Serenity Gardens	1	0	1	1	5	1	9
Shipleigh Manor	0	0	2	2	2	0	6
Somerford House	4	1	5	2	15	4	31
Somerford Place	3	0	7	0	16	2	28
Sunrise Senior Living of Wilmington	5	0	0	2	18	0	25
The Lorelton	4	0	13	0	13	0	30
The Summit	0	0	12	7	21	2	42
<b>New Castle County Total</b>	<b>62</b>	<b>35</b>	<b>193</b>	<b>49</b>	<b>188</b>	<b>12</b>	<b>539</b>

**Table 19  
(Continued)**

**Number of Move-Outs by Disposition, Facility Type, County and Facility Name, 2019**

AL/RR Facility	Own or Relatives' Home	Acute Care Hospital	Nursing Home	Other AL/RR	Death	Other	Total
<b>Kent County</b>							
Brookdale Dover	0	0	12	0	36	0	48
Dover Place	5	0	4	0	13	0	22
State Street Assisted Living	7	0	10	1	48	0	66
Westminster Village	5	0	21	2	0	0	28
<b>Kent County Total</b>	<b>17</b>	<b>0</b>	<b>47</b>	<b>3</b>	<b>97</b>	<b>0</b>	<b>164</b>
<b>Sussex County</b>							
Brandywine at Seaside Pointe	18	0	7	2	22	0	49
Brandywine Living at Fenwick Island	2	2	13	3	12	0	32
Milford Place	0	1	7	3	15	6	32
OakBridge Terrace at Manor House	0	4	8	0	12	0	24
Peach Tree Health Group	0	0	0	0	0	0	0
The Moorings at Lewes	1	2	10	0	4	0	17
<b>Sussex County Total</b>	<b>21</b>	<b>9</b>	<b>45</b>	<b>8</b>	<b>65</b>	<b>6</b>	<b>154</b>
<b>Total All Facilities</b>	<b>100</b>	<b>44</b>	<b>285</b>	<b>60</b>	<b>350</b>	<b>18</b>	<b>857</b>

**Table 20**  
**Percentage of Move-Outs by Disposition, Facility Type, County and Facility Name, 2019**

AL/RR Facility	Own or Relatives' Home	Acute Care Hospital	Nursing Home	Other AL/RR	Death	Other	Total
<b>New Castle County</b>							
Arden Courts of Wilmington	24.0%	4.0%	16.0%	16.0%	40.0%	0.0%	100.0%
Brookdale Hockessin	9.7%	0.0%	48.4%	9.7%	32.3%	0.0%	100.0%
Foorwood Manor	0.0%	0.0%	80.0%	0.0%	20.0%	0.0%	100.0%
Foulk Manor North	15.2%	12.1%	36.4%	21.2%	15.2%	0.0%	100.0%
Foulk Manor South	0.0%	5.0%	90.0%	0.0%	0.0%	5.0%	100.0%
Gilpin Hall	0.0%	0.0%	66.7%	33.3%	0.0%	0.0%	100.0%
HarborChase Wilmington	7.7%	0.0%	7.7%	0.0%	84.6%	0.0%	100.0%
Ingleside Assisted Living	18.8%	0.0%	50.0%	0.0%	25.0%	6.3%	100.0%
Ivy Gables	18.8%	12.5%	18.8%	12.5%	37.5%	0.0%	100.0%
Jeanne Jugan Residence	0.0%	0.0%	88.9%	11.1%	0.0%	0.0%	100.0%
Lodge Lane	8.7%	0.0%	47.8%	0.0%	39.1%	4.3%	100.0%
Luther Towers I	45.5%	18.2%	18.2%	0.0%	18.2%	0.0%	100.0%
Millcroft Assisted Living	0.0%	0.0%	100.0%	0.0%	0.0%	0.0%	100.0%
OakBridge Terrace at Cokesbury Village	0.0%	3.7%	81.5%	0.0%	14.8%	0.0%	100.0%
OakBridge Terrace at Country House	9.1%	48.5%	33.3%	0.0%	9.1%	0.0%	100.0%
Paramount Senior Living	13.3%	0.0%	26.7%	6.7%	53.3%	0.0%	100.0%
Rockland Place	16.7%	16.7%	0.0%	33.3%	33.3%	0.0%	100.0%
Serenity Gardens	11.1%	0.0%	11.1%	11.1%	55.6%	11.1%	100.0%
Shipley Manor	0.0%	0.0%	33.3%	33.3%	33.3%	0.0%	100.0%
Somerford House	12.9%	3.2%	16.1%	6.5%	48.4%	12.9%	100.0%
Somerford Place	10.7%	0.0%	25.0%	0.0%	57.1%	7.1%	100.0%
Sunrise Senior Living of Wilmington	20.0%	0.0%	0.0%	8.0%	72.0%	0.0%	100.0%
The Lorelton	13.3%	0.0%	43.3%	0.0%	43.3%	0.0%	100.0%
The Summit	0.0%	0.0%	28.6%	16.7%	50.0%	4.8%	100.0%
<b>New Castle County Total</b>	<b>11.5%</b>	<b>6.5%</b>	<b>35.8%</b>	<b>9.1%</b>	<b>34.9%</b>	<b>2.2%</b>	<b>100.0%</b>

**Table 20  
(Continued)**

**Percentage of Move-Outs by Disposition, Facility Type, County and Facility Name, 2019**

<b>AL/RR Facility</b>	<b>Own or Relatives' Home</b>	<b>Acute Care Hospital</b>	<b>Nursing Home</b>	<b>Other AL/RR</b>	<b>Death</b>	<b>Other</b>	<b>Total</b>
<b>Kent County</b>							
Brookdale Dover	0.0%	0.0%	25.0%	0.0%	75.0%	0.0%	100.0%
Dover Place	22.7%	0.0%	18.2%	0.0%	59.1%	0.0%	100.0%
State Street Assisted Living	10.6%	0.0%	15.2%	1.5%	72.7%	0.0%	100.0%
Westminster Village	17.9%	0.0%	75.0%	7.1%	0.0%	0.0%	100.0%
<b>Kent County Total</b>	<b>10.4%</b>	<b>0.0%</b>	<b>28.7%</b>	<b>1.8%</b>	<b>59.1%</b>	<b>0.0%</b>	<b>100.0%</b>
<b>Sussex County</b>							
Brandywine at Seaside Pointe	36.7%	0.0%	14.3%	4.1%	44.9%	0.0%	100.0%
Brandywine Living at Fenwick Island	6.3%	6.3%	40.6%	9.4%	37.5%	0.0%	100.0%
Milford Place	0.0%	3.1%	21.9%	9.4%	46.9%	18.8%	100.0%
OakBridge Terrace at Manor House	0.0%	16.7%	33.3%	0.0%	50.0%	0.0%	100.0%
Peach Tree Health Group	N/A	N/A	N/A	N/A	N/A	N/A	N/A
The Moorings at Lewes	5.9%	11.8%	58.8%	0.0%	23.5%	0.0%	100.0%
<b>Sussex County Total</b>	<b>13.6%</b>	<b>5.8%</b>	<b>29.2%</b>	<b>5.2%</b>	<b>42.2%</b>	<b>3.9%</b>	<b>100.0%</b>
<b>Total All Facilities</b>	<b>11.7%</b>	<b>5.1%</b>	<b>33.3%</b>	<b>7.0%</b>	<b>40.8%</b>	<b>2.1%</b>	<b>100.0%</b>



## **APPENDIX A: 2019 AL/RR TRENDS AMONG THE UNDER 65 POPULATION**

In February 2019, the DHCC began collecting new move-in, move-out, utilization, and occupancy data on the Under 65 AL/RR population. In previous years, data pertaining to this cohort were consolidated into an Under 65 category. Revised data collection forms asked facilities to report data for this cohort using the following sub-cohort categories: ages 18-34, 35-44, 45-54, and 55-64. The DHCC used the new data to begin tracking age-specific key AL/RR metrics among younger populations.

In 2019, 89.7% of monthly surveillance reports submitted by AL/RR facilities were submitted using the revised form to include key metric data for the 18-34, 35-44, 45-54, and 55-64 sub-cohorts. Residents under the age of 65 accounted for 15 of 896 move-ins (1.7%) and 27 of 857 move-outs (3.2%) from Delaware AL/RR facilities in 2019. Facilities in New Castle, Kent, and Sussex Counties accounted for N=7, N=1, and N=7 Under 65 resident move-ins and N=10, N=12, and N=5 Under 65 resident move-outs, respectively. At least 10 of the 15 resident move-ins and 19 of the 27 move-outs among the Under 65 population represented residents age 55-64. These trends likely reflect minimum AL/RR facility age requirements (e.g., 55+). The small cohort size precludes further analysis of 2019 AL/RR move-ins and move-outs among the Under 65 population.