

Cedar Tree Surgical Center

Serving Sussex County since 1998



945 9730

**Cedar Tree
MEDICAL & SURGICAL CENTER**

ALLIE HAGER, MSN, FNP-BC
DERMATOLOGY AND COSMETIC SERVICES

**Cedar Tree Medical
FAMILY PRACTICE**

SIMAAAN M. ABOUD, M.D., F.A.C.S.
GENERAL SURGEON, Bariatric, Colon, Gynecologic, Endocrine, Urology

DelCoast
LASER TATTOO REMOVAL

MOHAMMED F. AHMED, M.D.
PAIN MANAGEMENT

WALK-INS ACCEPTED
9:00am - 4:30pm

CHERYL ZDANA, FNP-BC
FAMILY PRACTICE & PAIN MANAGEMENT

COASTAL ORTHOPAEDICS, P.A.
ANDREW ROBINSON, M.D., CIME
BOARD CERTIFIED ORTHOPAEDIC SURGEON

Beltone

HEARING CENTER
HEARING AIDS, HEARING TEST & REPAIRS

Margaret Woodwin, PhD
Hearing & Speech Services
302-651-0290

Accredited by The Joint
Commission and Medicare since
1998

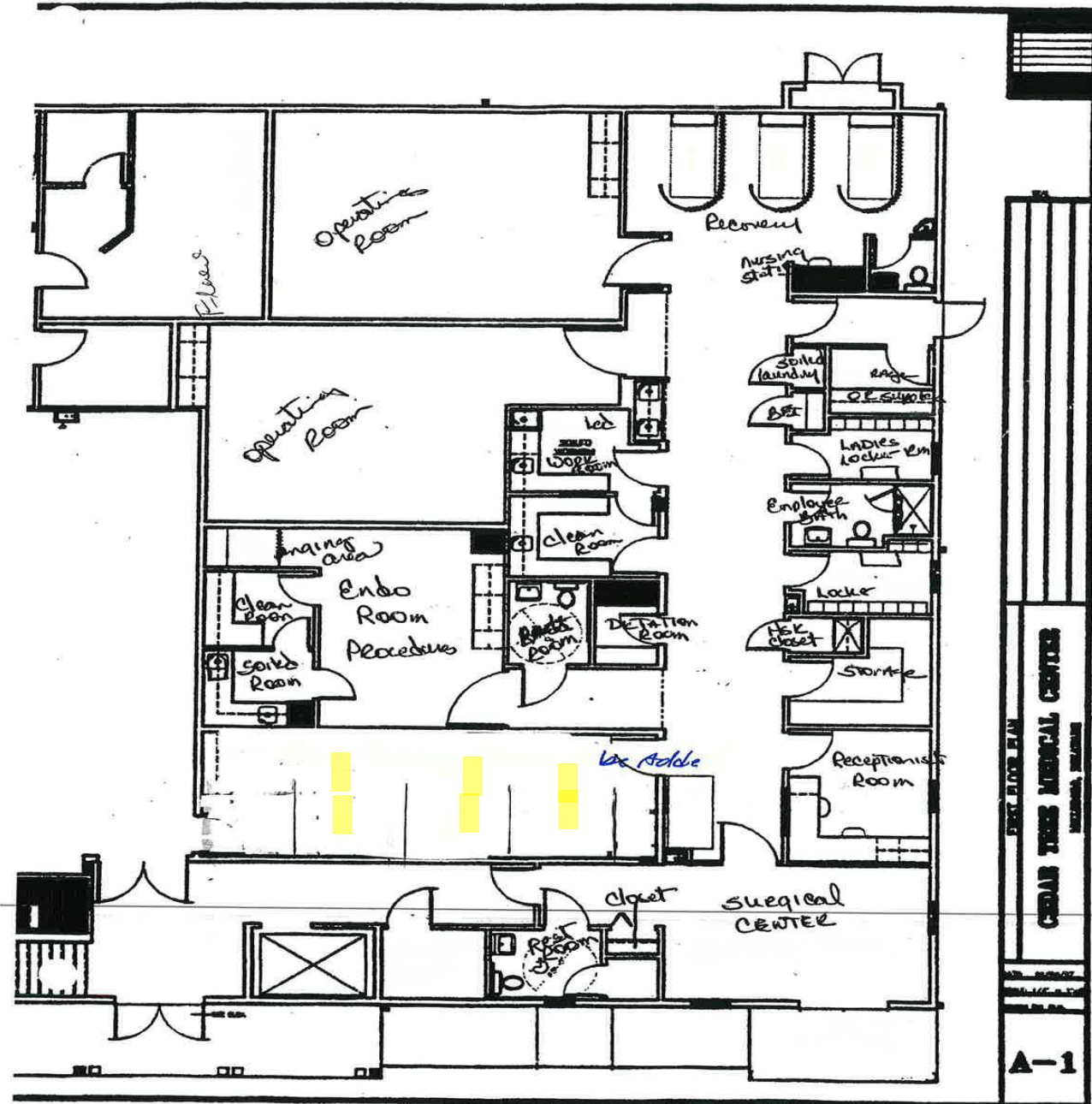
Accessible and affordable
care, especially to
indigent and migrant
workers

With more surgical cases
becoming ASC assigned,
general anesthesia
becomes a vital service to
have at our center

With the growth that we are experiencing in our area, it is our responsibility to grow and expand to provide the necessary services including procedures requiring general anesthesia

General anesthesia needs and indications:

- Patients undergoing surgical procedures that require deep relaxation for long periods of time are best suited for general anesthesia as long as there are no contraindications.
- Surgeries that cannot be adequately anesthetized with local or regional anesthesia require general anesthesia.
- Some abdominal hernia will necessitate general anesthesia.
- Uncooperative patients are also better treated with general anesthesia, even for more minor procedures.
- Patient preference can also influence the decision to undergo anesthesia.



CEDAR TREES MEDICAL CENTER
 12345 MAIN ST
 SUITE 100



Rational for the General Anesthesia proposal at CTS

- Ambulatory surgery center established in 1998 with general anesthesia infrastructure included.
- Population growth including underserved, uninsured and indigent communities.
- Decrease access to local hospitals and nearby out-of-state medical facilities for elective surgeries.
- Projected sharp increase in 60+ age group population in Sussex County.
- Value-based medical services and affordable care act policies with referral networks and ACO groups.

The relationship of the proposal to the Health Resources Management Plan (HRMP).

- Certified by Medicare.
- Certified by Medicaid.
- Participating in DHIN.
- ACO participant (value-based health care delivery system).
- Affordable care for Medically indigent and the uninsured.

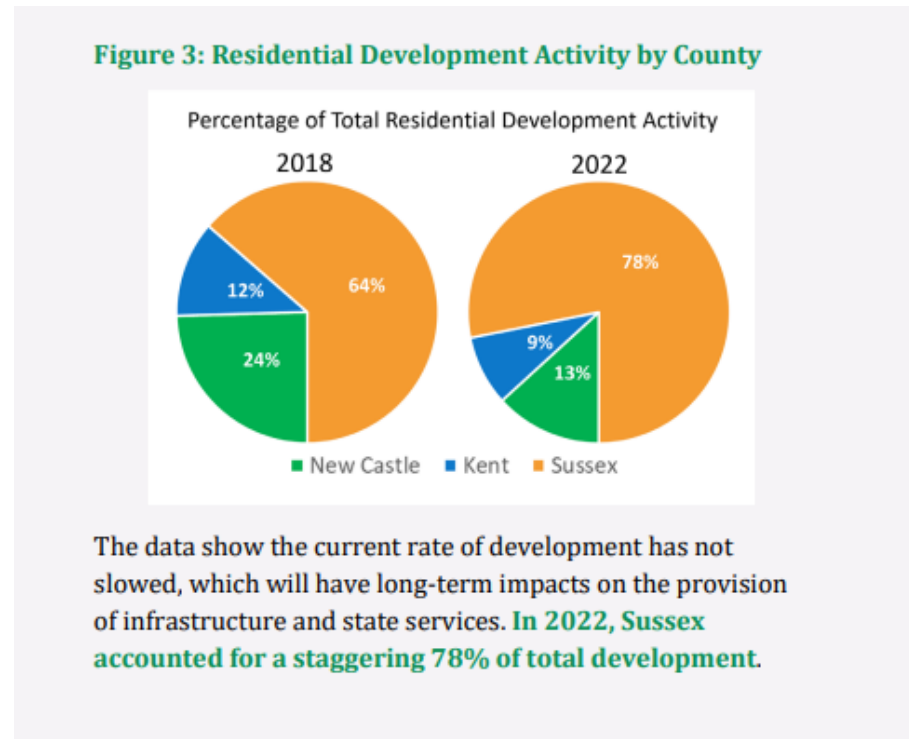
The need of the population for the proposed project.

Aging population.

Percent Change

Age	2015	2020	2025	2030	2035	2040	2045	2050
60+	0.0%	17.5%	32.1%	43.2%	49.6%	52.7%	56.3%	59.9%
65+	0.0%	18.9%	37.9%	54.9%	66.1%	71.1%	72.6%	75.8%
75+	0.0%	21.9%	49.2%	75.8%	103.1%	124.0%	133.8%	134.2%
85+	0.0%	21.1%	42.3%	74.8%	119.3%	155.1%	190.4%	213.5%

The need of the population for the proposed project.



- <https://stateplanning.delaware.gov/publications/documents/2023-annual-report.pdf>

The need of the population for the proposed project.

- Substantial improvements in:
 - Accessibility: In the heart of Sussex county. Compliment area hospitals and ASC General Anesthesia services.
 - Availability of skilled providers: With skilled general surgeons and anesthesiologists with more than 30 years of experience.
 - New technology: State of the art anesthesia machines, infrastructure and recovery rooms.
 - Advances in medical science: New introduced procedures for patients who need new and improved procedures requiring GA (bariatric surgeries, Sleep Apnea surgeries, podiatry...)

The availability of less costly and/or more effective alternatives to the proposal, including alternatives involving the use of resources located outside the state

- *GA services for elective surgery (Sussex County Delaware, Berlin and Salisbury Maryland) are also available for our patients.*
- *However, it is greatly limited by cost, travel, available OR time and available providers especially to our underserved and indigent patients.*
- Our ASC as the most cost effective for most of the procedures performed especially endoscopy state wide
- *Our proposed GA will provide a viable complimentary GA site for in state as well as out of state comparable services.*

The relationship of the proposal to the existing health care delivery system.

- Proposed patient population is currently being served by Hospital based (Beebe health system) and outpatient based (LSC).
- Our proposal will provide a more accessible and cost effective alternative.
 - We are participants in local ACO.
 - Extensive primary care referral network that we diligently built since 1998.
 - Positively affecting the impact on employment and diversity of health care providers.
 - Betterment of patient choice

The immediate and long-term viability of the proposal in terms of the applicant's access to financial, management, and other necessary resources

- The breakdown of our cost and projected expenses is provided in the attached appendices. (please refer to application).

The anticipated effect of the proposal on the costs of and charges for health care.

- Maintain cost effective and standard of care policies at our ASC with the proposed GA services.
- Cedar tree is regarded as the most affordable as per third party payers in regards to the currently performed procedures.
 - Significant advantage to uninsured and underserved patients.
- Shift from cost based reimbursement system to value based (ACO referral based and primary care network).

The anticipated effect of the proposal on the quality of health care.

- *The main focus and need for the General Anesthesia service at Cedar Tree is to support a managed, coordinated approach to serving the health care needs in our target population.*
- *We will provide a much needed complimentary service to area hospitals and ASCs.*
- *As part of area ACOs and with our local and regional established and well-earned referral network, we will be able to offer a much more accessible and cost relevant service for the elective surgeries in question*