

JOINT FINANCE COMMITTEE HEARING FISCAL YEAR 2022 BUDGET



KARYL T. RATTAY, MD, MS, FAAP
DIVISION DIRECTOR

DIVISION OF PUBLIC HEALTH
Department of Health and Social Services
February 24, 2021
Virtual, conducted via Zoom

Comments available online at <https://dhss.delaware.gov/>

Good Morning Representative Carson, Senator Paradee, members of the Joint Finance Committee and members of the public. I'm Karyl Rattay, Director of the Division of Public Health. With me today are Crystal Webb, Deputy Director, and Linda Popels, Chief of Administration.

Thank you for the opportunity to speak with you today and present our accomplishments and Fiscal Year (FY) 2022 Governor's Recommended Budget.

DIVISION OVERVIEW

- Our **mission** is to protect & promote the health of all people in Delaware
- Our **vision** is healthy people in healthy communities

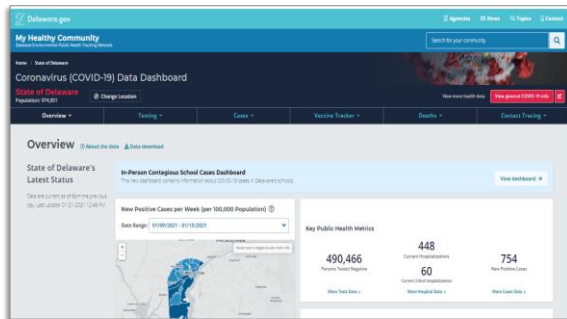


2

DPH's mission is to protect and improve the health of all people in Delaware. Our vision is healthy people in healthy communities. We do this in many ways. COVID-19 has challenged every area of Public Health since March 2020. We have 800 dedicated staff who are working night and day to support Delaware residents. I cannot underscore enough the need, now more than ever for dedicated funding and sustained support for Public Health operations. Before reviewing the Governor's Recommended Budget, I would like to highlight some of our accomplishments over the last year and some challenges that we face moving forward.

ACCOMPLISHMENTS

My Healthy Community Data Portal COVID-19 Data Dashboard



Healthy Communities Delaware



3

My Healthy Community Data Portal

DPH leveraged the data infrastructure from the My Healthy Community Data portal that was launched in May 2019 to create the COVID-19 data dashboard. This dashboard displays real time data to keep the public informed about key COVID-19 metrics. *The site has had over 1,238,432 users, and almost 7 million pageviews. Delaware is the first state to provide HIPAA compliant COVID-19 data at the neighborhood level.* The site also hosts approximately 87 indicators covering an array of population health measures. My Healthy Community Data portal is not only essential for COVID-19 response, It is an essential tool for addressing social determinants of health in our state.

Healthy Communities Delaware

Another accomplishment we would like to highlight that is key for us to address social determinants of health is the progress we have made with our Healthy Communities Delaware initiative or HCD. HCD is a collaborative place-based approach to enable communities to address their most important health determinants.

To date, a total of \$3.3 million dollars from both the Health Fund's Innovation funding and from the CARES Act has been distributed through HCD to support community-based organizations throughout the state.

ACCOMPLISHMENTS: COVID-19 CONTACT TRACING, TESTING, PROTECTING PARTNERS AND CONSTITUENTS

The infographic is a grid of seven items, each with an image and a text box. The top row contains four items: 1) 'HELP US TRACE THE VIRUS.' with an icon of people and a virus particle; 2) A person in a lab coat and mask holding a test tube; 3) A smartphone displaying the 'COVID ALERT DE' app; 4) A person wearing a full-face shield and mask. The bottom row contains three items: 5) A call center workstation with a headset; 6) A person in a mask inspecting a food establishment; 7) A book titled 'RETURNING TO SCHOOL' with a school building on the cover. A red circular logo with a white stylized figure is located in the bottom right corner of the infographic.

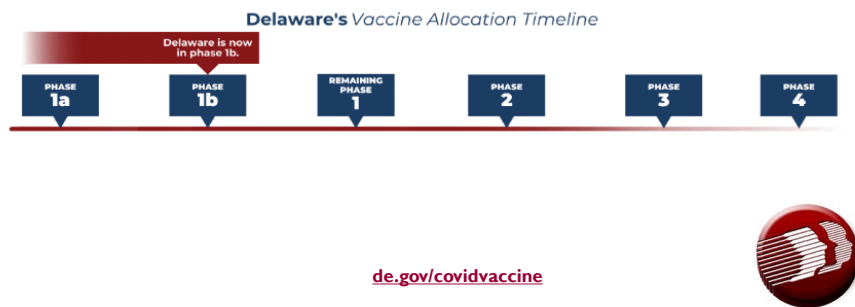
- May 2020: Contact tracing began
- May 2020: Community testing events began
- September 2020: COVID Alert DE app
- DPH delivers Personal Protective Equipment
- DPH staffs the COVID-19 Call Center
- DPH inspects businesses, food establishments
- Epidemiologists Partner with School Nurses

Some of our other COVID-19 accomplishments include:

- In May 2020, we launched our contact tracing efforts with members of the Delaware National Guard. In June, we added more than 100 contact tracers through a contract with NORC. As of January, we had more than 400 contact tracers in place to assist in controlling the spread of COVID-19 infection.
- The state’s first Curative community testing event was held in May. Since then, DPH and DEMA have set up community testing sites with many partners as well as a popular home testing option. The Public Health Lab has been processing thousands of test results weekly. Delaware has maintained one of the highest testing rates in the Country.
- In mid-September, DPH launched COVID Alert DE, our COVID-19 exposure notification app – which has been downloaded by nearly 100,000 Delawareans.
- In the past year, our State Health Operations Center delivered 6,441,033 pieces of Personal Protective Equipment to 2,282 facilities.
- DPH established a Call Center on March 4, which has answered 61,700 calls and 50,911 emails.
- Since the pandemic began, DPH has inspected 827 food establishments and 372 general businesses for COVID-19 operating requirements and to follow up on complaints. DPH has also reviewed many plans submitted for gatherings and sporting events.
- DPH has supported schools in a variety of ways, including reviewed safety plans, assigned a liaison to each school district and we have approximately 10 epidemiologists focused on supporting school nurses with school-related cases and capturing school case data.

WHERE WE ARE NOW

Where can I get my vaccine?



As soon as the COVID vaccine arrived in Delaware in December, we began delivering vaccine for residents and staff of Long-Term Care Facilities, health care and EMS workers.

On January 20, 2021 we moved to Phase 1B of our vaccine plan, focusing on the 65+ population. Not everyone will receive their vaccinations at the same time because we have extremely limited vaccine supplies.

As of yesterday, the State of Delaware and its partners have administered 182,427 COVID-19 vaccinations. Delaware is within top ten states in the nation for vaccinations.

LOOKING AHEAD – IDENTIFIED AREAS OF IMPROVEMENT

- Reduce Opioid Deaths
- Address Social Determinants of Health to Improve
 - Health equity
 - Black Infant and Maternal Mortality
 - Chronic Disease Management
- Strengthen Public Health supports for early childhood comprehensive systems

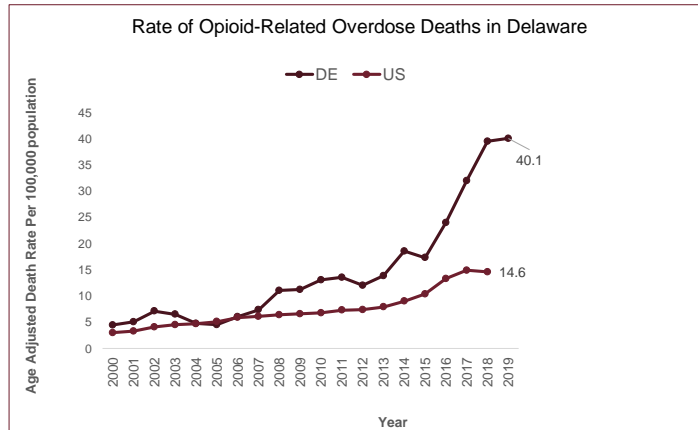


6

Delaware faces many health challenges. Our priorities include the need to:

- **Reduce Opioid Deaths**
- **Address social determinant of health issues to improve:**
 - Health Equity
 - The mortality gap for African-American babies and moms
 - The drivers of chronic disease
- **Strengthen the Early Childhood Comprehensive System:**
 - Improving Child Development Watch and Birth to Three
 - Enrolling more families who need home visiting services

REVERSING THE OPIOID CRISIS AND ADDRESSING SOCIAL DETERMINANTS FOR INFANT MORTALITY



Source: Delaware Health and Social Services, Division of Public Health, Delaware Health Statistics Center

* Data for 2019 is preliminary and subject to change



7

Opioid Deaths

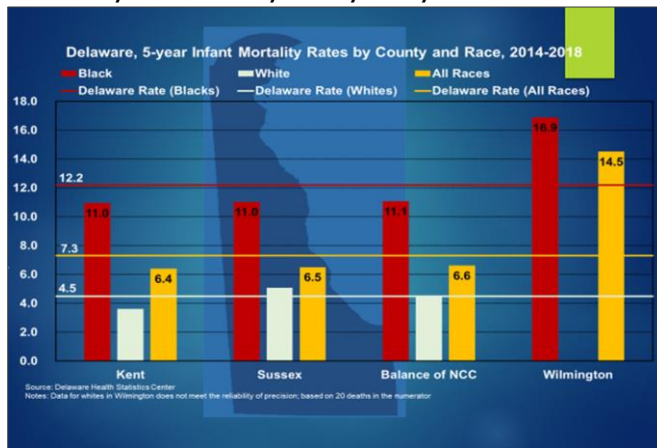
The opioid epidemic remains a priority for DPH. We are working hard to coordinate efforts across state government and with our many partners.

In Delaware, like the rest of the country, we are simultaneously dealing with the COVID-19 pandemic and a worsening opioid overdose epidemic. COVID-19 has made dealing with the opioid crisis more difficult, our response includes:

- In April of 2020, we began prioritizing car-side naloxone distribution events. DPH and its partners have held more than 60 car-side naloxone distribution events since April.
- In November, we launched a statewide campaign reminding people of the virtual tools on [HelpsHereDe.com](https://www.HelpsHereDe.com) because accessing treatment during COVID-19 has been difficult for many.
- In December, DPH announced a mail-order naloxone partnership. People can visit [HelpsHereDe.com](https://www.HelpsHereDe.com) to have naloxone mailed directly to their homes. DPH also launched a statewide Narcan and OpiRescue De campaign to encourage people to download the app and get Narcan.

REVERSING THE OPIOID CRISIS AND ADDRESSING SOCIAL DETERMINANTS FOR INFANT MORTALITY

Delaware 5-yr Infant Mortality Rates by County and Race 2014-2018



Source: Delaware Health and Social Services, Division of Public Health, Delaware Health Statistics Center



8

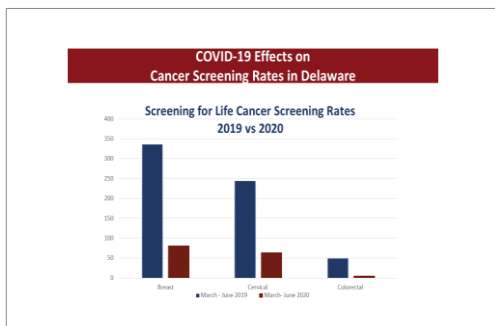
Addressing Social Determinants for Infant Mortality

Long-standing inequities have been magnified throughout this pandemic along with the disproportionate impacts on many different levels for our lower-income, black and brown, and non-English speaking communities across Delaware. The social determinants of health are the conditions in which people live, work, connect, play, pray and age and are mostly responsible for health inequities - the unfair and avoidable differences in health status. We will need to intensify our efforts to address social determinants and improve health equity while we are in the midst of this pandemic and into the future. For example, DPH will need to enhance our work with partners to address infant mortality disparities.

- In addition to our infant mortality rate being higher than the national average, the black infant mortality rate is more than twice as high as the white rate of infant deaths in our state. Growing research points to intentional work addressing institutional and structural racism policies as the way to close this gap and change the trajectory for future generations.

Another important area of work for DPH where we still have much to do is **Strengthening supports for Early Childhood Comprehensive systems**. The Division of Public Health, working alongside a host of state and community partners are responsible for providing oversight and support for a number of services that are part of the early childhood comprehensive system in Delaware. Child Development Watch, Birth to Three programs, home visiting continuum of services, Help Me Grow 211, services for children and youth with special health care needs- are just some of these programs. DPH is committed to working with Office of Early Learning and other partners to improve the early childhood service systems across our state.

ADDRESSING SOCIAL DETERMINANTS OF HEALTH FOR CHRONIC DISEASES



9

We are also very concerned about chronic disease prevention, early detection, management and treatment in relationship to the pandemic. This slide shows that Delaware screening rates for breast, cervical and colorectal cancers dropped by more than half between March-June 2020 when compared to the same timeframe in 2019. This is a major concern for all Delawareans. We are particularly concerned about those populations who are already experiencing disproportionate burden of mortality and morbidity.

Disparities in other chronic disease areas that lead to worse outcomes with COVID-19 such as diabetes, heart disease and physical activity rates for youth and adults continue to be areas of concern for our state and focus areas for DPH work.

It is also important to highlight youth vaping. A startling 82% of Delaware High School Students surveyed from the 2018 youth tobacco survey indicated that they vape and use other tobacco products. This is a huge issue impacting the youth in our state from an addiction perspective but also, it is important to know that research found that those who vaped were five to seven times more likely to be infected with COVID-19 than those who did not use e-cigarettes.

DPH developed a vaping toolkit in partnership with the Department of Education, Department of Services for Children Youth & Their Families, Division of Alcohol & Tobacco Enforcement (DATE), and Polytech High School. You can go to [healthydelaware.org](https://www.healthdelaware.org) under the Tobacco tab to access the vaping toolkit. Source: [https://www.jahonline.org/article/S1054-139X\(20\)30399-2/fulltext](https://www.jahonline.org/article/S1054-139X(20)30399-2/fulltext)

Now I will turn to the Governor's Recommended Budget for Fiscal Year 2022.

FY 2022 GOVERNOR'S RECOMMENDED BUDGET

FY 2022 Governor's Recommended Budget (\$ in thousands)

	GF	ASF	NSF	Total
FTEs	345.3	59.5	305.4	710.2
Dollars (\$)	50,358.0	34,790.7	68,466.1	143,758.7

- 77 NSF positions added for COVID 19 response
- \$100,000 enhancement for Naloxone Access & Distribution



10

Budget Definitions:

GF – General Funds
 ASF – Appropriated Special Funds
 NSF – Non-Appropriated Special Funds
 FTEs – Full Time Equivalent Positions

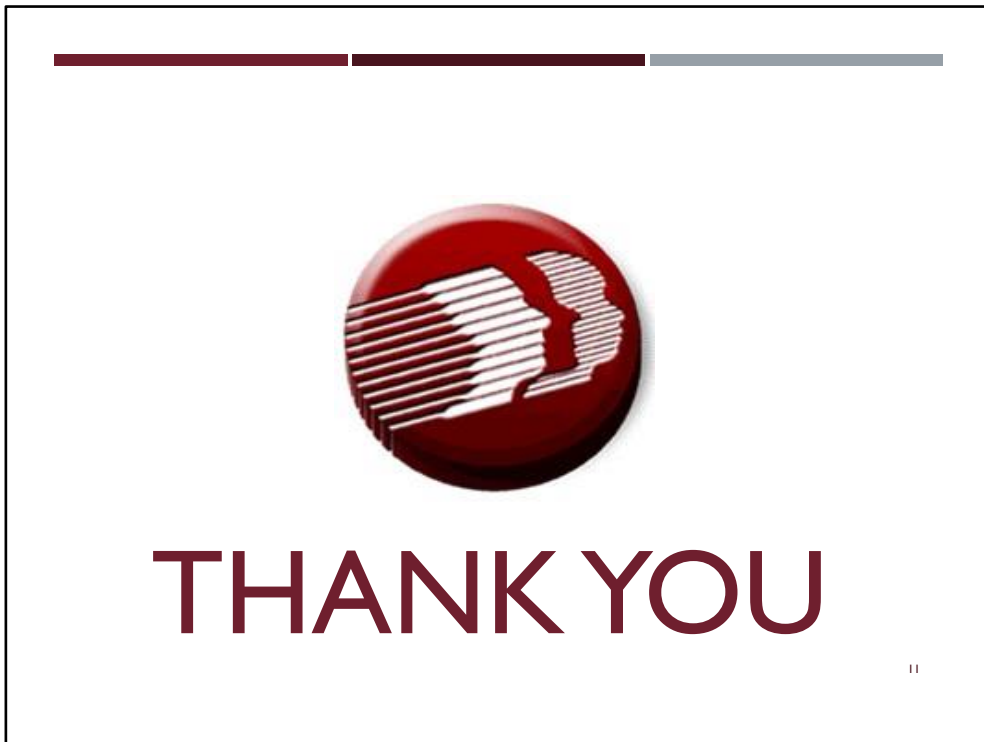
The slide above shows the budget included in the FY 2022 Governor's Recommended Budget (GRB) for DPH.

Our Division's FY 2022 GRB is:

- \$50,358.0 [Fifty Million, Three Hundred Fifty-Eight Thousand dollars] in General Funds (GF);
- \$34,790.7 [Thirty-Four Million, Seven Hundred Ninety Thousand, Seven Hundred dollars] in Appropriated Special Fund (ASF) Spending Authority; and
- \$68,466.1 [Sixty-Eight Million, Four Hundred Sixty-Six Thousand, One Hundred dollars] in Non-Appropriated Special Funds (NSF).

Our Divisions FY2022 GRB also includes:

- 77 NSF positions added for COVID 19 response
- \$100,000 Enhancement for Naloxone Access & Distribution



Thank you for the opportunity to share with you the challenges and opportunities facing the Division of Public Health.

I am happy to answer any questions you may have.