

DELAWARE VITAL STATISTICS ANNUAL REPORT REPORTED PREGNANCIES, 2018



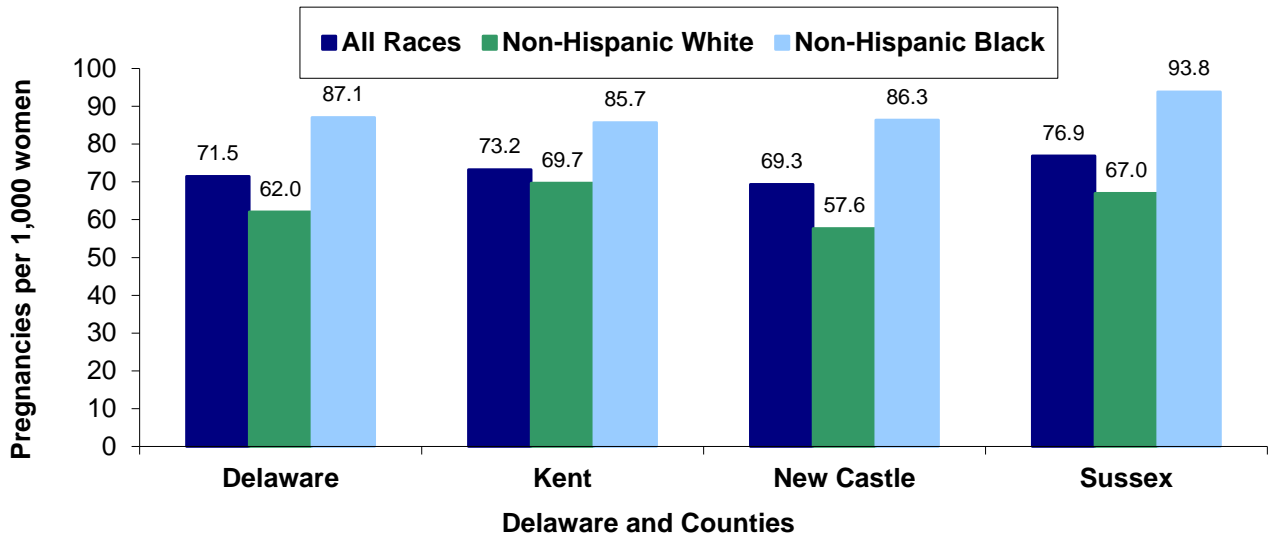
Suggested Citation:

Delaware Health Statistics Center. *Delaware Vital Statistics Annual Report, 2018*.
Delaware Department of Health and Social Services, Division of Public Health: 2020.

REPORTED PREGNANCIES

At 71.5 reported pregnancies per 1,000 women ages 15-44, the 2014-2018 rate of reported pregnancies decreased by 11 percent from the 80.3 rate in 2009-2013. The 2014-2018 five year average rate found Sussex County to have the highest pregnancy rate for non-Hispanic black (93.8 per 1,000 women). Kent County had the lowest reported pregnancy rate for non-Hispanic blacks (85.7 per 1,000 women) but had the highest rate for non-Hispanic white women (69.7 pregnancies per 1000 women). New Castle had the lowest reported pregnancy rate for non-Hispanic whites (57.6 per 1,000 women) during this same five year period.

Figure 21. Five-year Average Rate of Reported Pregnancies by Race,

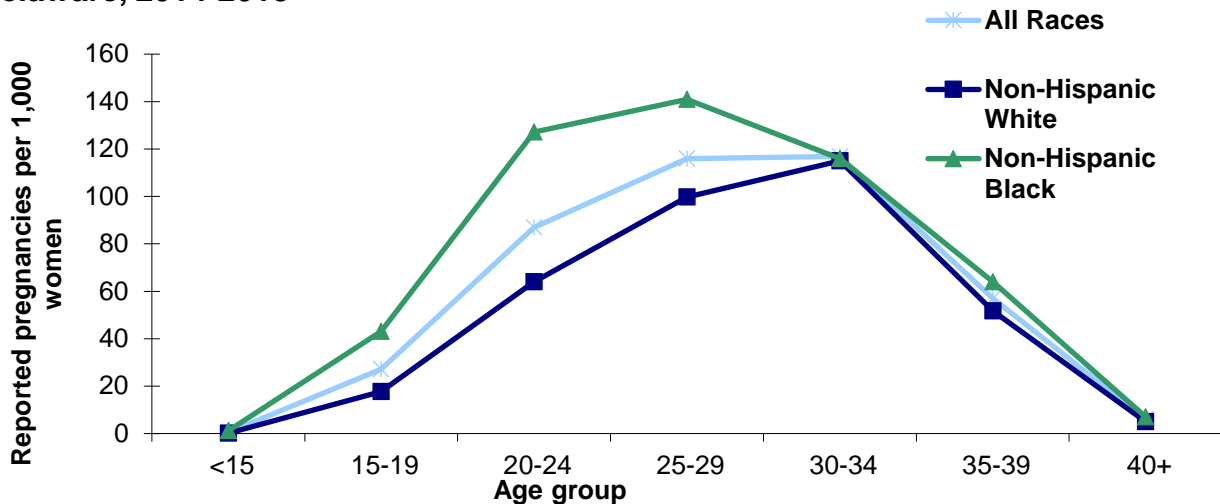


Source: Delaware Department of Health and Social Services, Division of Public Health, Delaware Health Statistics Center

Non-Hispanic black women in the 25-29 year age group had the highest pregnancy rate, at 140.9 pregnancies per 1,000 women in 2014-2018.

Non-Hispanic black women had higher five year average (2014-2018) pregnancy rates than white women in all age groups. The highest pregnancy rate during this same time period for non-Hispanic white women was in the 30-34 age group (115 pregnancies per 1,000 women)

Figure 22. Five-year Average Rate of Reported Pregnancies by Age and Race, Delaware, 2014-2018

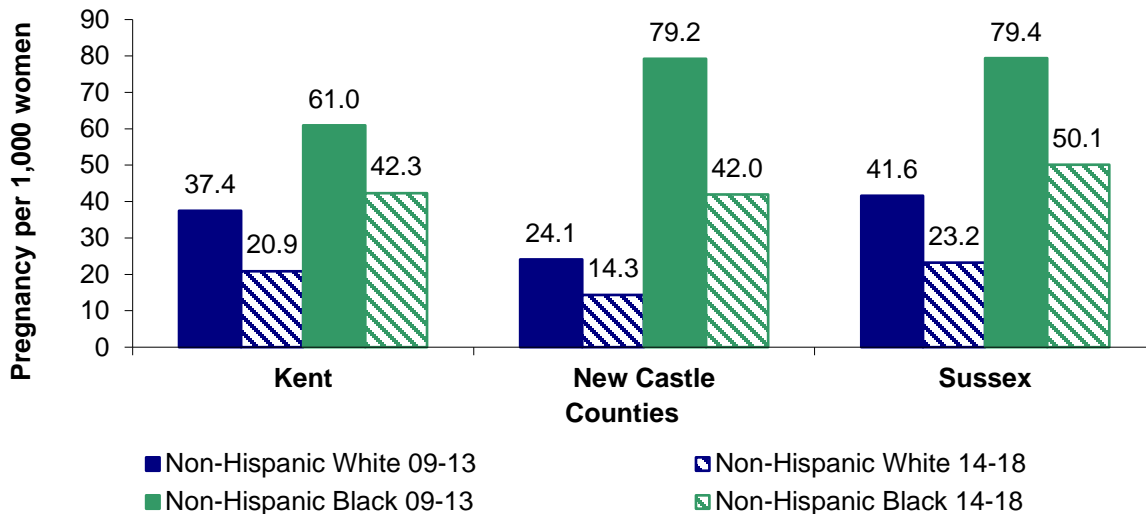


Source: Delaware Department of Health and Social Services, Division of Public Health, Delaware Health Statistics

REPORTED PREGNANCIES

In all three counties the five year average teen (15-19) pregnancy rates for all races continues to decline from 2009-2013 to 2014-2015. New Castle County had a 46.9 percent decrease in the number of reported pregnancies for non-Hispanic black teens, aged 15-19, from 2009-2013 to 2014-2018. In 2014-2018, Sussex County had the highest five year average reported pregnancy rate for both non-Hispanic white teens (23.2 pregnancies per 1,000 women) and non-Hispanic black teens (50.1 pregnancies per 1,000 women)

Figure 23. Five-year Average Teenage (15-19) Pregnancy Rates by County and Race,



Source: Delaware Department of Health and Social Services, Division of Public Health, Delaware Health Statistics Center

- ▶ In 2014-2018, New Castle County had the lowest five year average pregnancy rate for younger white non-Hispanic teens aged 15-17, (5.9 pregnancies per 1,000 women). The highest rate for non-Hispanic black teens, aged 15-17, during this same time period was in Sussex County (27.8 pregnancies per 1,000 women).

The five-year average (2014-2018) pregnancy rate for older non-Hispanic white teens, aged 18-19, was lowest in New Castle County (26.4 pregnancies per 1,000 females). During this same time period Sussex County had the highest rate for non-Hispanic black teens, aged 18-19, at a rate of 82.9 pregnancies per 1,000 women.

- ▶ In 2018, there were 1,740 abortions performed in Delaware, 1,504 to Delaware residents and 236 to non-residents.
 - Forty-four percent of all pregnancies to females under 15 ended in termination in 2018.
 - ⇒ 37.5 percent to non-Hispanic black females under 15 ended in termination in 2018.
 - Married women undergo significantly fewer terminations than their single counterparts.
 - ⇒ 2.4 percent of pregnancies to non-Hispanic white married women ended in termination and 5.4 percent of pregnancies to non-Hispanic black married women ended in termination in 2018.
 - ⇒ When the women were unmarried, these numbers increased to 22.2 percent among non-Hispanic white women and 23.1 percent among non-Hispanic black women in 2018.
 - There were 59 fetal deaths of Delaware residents in 2018.
 - There were 10,593 live births to Delaware residents in 2018.
 - In 2018, women under 25 accounts for 41% of all induced termination of pregnancy in Delaware.

TABLE D-1. NUMBER AND PERCENT OF REPORTED PREGNANCIES BY AGE OF WOMAN AND COUNTY, DELAWARE, 2018

Area/ Age	Reported Pregnancies							
	Total		Live Births		Fetal Deaths		Induced Terminations	
	Number	Percent	Number	Percent	Number	Percent	Number	Percent
Delaware	12,156	100.0	10,593	87.1	59	0.5	1,504	12.4
<15	9	100.0	5	55.6	0	0.0	4	44.4
15-19	662	100.0	497	75.1	3	0.5	162	24.5
15-17	179	100.0	121	67.6	0	0.0	58	32.4
18-19	483	100.0	376	77.8	3	0.6	104	21.5
20-24	2,409	100.0	1,960	81.4	7	0.3	442	18.3
25-29	3,544	100.0	3,110	87.8	21	0.6	413	11.7
30-34	3,494	100.0	3,190	91.3	21	0.6	283	8.1
35-39	1,672	100.0	1,514	90.6	6	0.4	152	9.1
40+	366	100.0	317	86.6	1	0.3	48	13.1
Unknown	-	...	-	...	0	...	-	...
Kent	2,485	100.0	2,149	86.5	13	0.5	323	13.0
<15	2	100.0	1	50.0	0	0.0	1	50.0
15-19	131	100.0	95	72.5	0	0.0	36	27.5
15-17	35	100.0	23	65.7	0	0.0	12	34.3
18-19	96	100.0	72	75.0	0	0.0	24	25.0
20-24	592	100.0	492	83.1	2	0.3	98	16.6
25-29	771	100.0	680	88.2	4	0.5	87	11.3
30-34	667	100.0	597	89.5	7	1.0	63	9.4
35-39	268	100.0	234	87.3	0	0.0	34	12.7
40+	54	100.0	50	92.6	0	0.0	4	7.4
Unknown	-	...	-	...	0	...	-	...
New Castle	7,144	100.0	6,165	86.3	37	0.5	942	13.2
<15	6	100.0	3	50.0	0	0.0	3	50.0
15-19	372	100.0	265	71.2	3	0.8	104	28.0
15-17	100	100.0	63	63.0	0	0.0	37	37.0
18-19	272	100.0	202	74.3	3	1.1	67	24.6
20-24	1,274	100.0	1,003	78.7	4	0.3	267	21.0
25-29	2,009	100.0	1,738	86.5	12	0.6	259	12.9
30-34	2,148	100.0	1,960	91.2	11	0.5	177	8.2
35-39	1,105	100.0	1,002	90.7	6	0.5	97	8.8
40+	230	100.0	194	84.3	1	0.4	35	15.2
Unknown	-	...	-	...	0	...	-	...
Sussex	2,527	100.0	2,279	90.2	9	0.4	239	9.5
<15	1	100.0	1	100.0	0	0.0	-	0.0
15-19	159	100.0	137	86.2	0	0.0	22	13.8
15-17	44	100.0	35	79.5	0	0.0	9	20.5
18-19	115	100.0	102	88.7	0	0.0	13	11.3
20-24	543	100.0	465	85.6	1	0.2	77	14.2
25-29	764	100.0	692	90.6	5	0.7	67	8.8
30-34	679	100.0	633	93.2	3	0.4	43	6.3
35-39	299	100.0	278	93.0	0	0.0	21	7.0
40+	82	100.0	73	89.0	0	0.0	9	11.0
Unknown	-	...	-	...	0	...	-	...

Notes:

1. Percentages may not add to 100% due to rounding.
2. Percentages are calculated based upon the total number of pregnancies within each area-age category.
3. Percentages for the age categories "<15" and "40+" may be misleading due to the small number of pregnancies in this category.

Source: Delaware Department of Health and Social Services, Division of Public Health, Delaware Health Statistics Center

TABLE D-2. NUMBER AND PERCENT OF REPORTED PREGNANCIES BY RACE, HISPANIC ORIGIN, AND AGE OF WOMAN, DELAWARE, 2018

Race- Hispanic Origin/ Age	Reported Pregnancies							
	Total		Live Births		Fetal Deaths		Induced Terminations	
	Number	Percent	Number	Percent	Number	Percent	Number	Percent
All Races	12,156	100.0	10,593	87.1	59	0.5	1,504	12.4
<15	9	100.0	5	55.6	0	0.0	4	44.4
15-19	662	100.0	497	75.1	3	0.5	162	24.5
15-17	179	100.0	121	67.6	0	0.0	58	32.4
18-19	483	100.0	376	77.8	3	0.6	104	21.5
20-24	2,409	100.0	1,960	81.4	7	0.3	442	18.3
25-29	3,544	100.0	3,110	87.8	21	0.6	413	11.7
30-34	3,494	100.0	3,190	91.3	21	0.6	283	8.1
35-39	1,672	100.0	1,514	90.6	6	0.4	152	9.1
40+	366	100.0	317	86.6	1	0.3	48	13.1
Unknown	0	...	0	...	0	...	0	...
Non-Hispanic White	5,822	100.0	5,197	89.3	16	0.3	609	10.5
<15	1	100.0	0	0.0	0	0.0	1	100.0
15-19	216	100.0	160	74.1	1	0.5	55	25.5
15-17	52	100.0	34	65.4	0	0.0	18	34.6
18-19	164	100.0	126	76.8	1	0.6	37	22.6
20-24	936	100.0	762	81.4	1	0.1	173	18.5
25-29	1,741	100.0	1,557	89.4	6	0.3	178	10.2
30-34	1,906	100.0	1,776	93.2	7	0.4	123	6.5
35-39	867	100.0	808	93.2	1	0.1	58	6.7
40+	155	100.0	134	86.5	0	0.0	21	13.5
Unknown	0	...	0	...	0	...	0	...
Non-Hispanic Black	3,573	100.0	2,880	80.6	29	0.8	664	18.6
<15	8	100.0	5	62.5	0	0.0	3	37.5
15-19	273	100.0	195	71.4	1	0.4	77	28.2
15-17	82	100.0	55	67.1	0	0.0	27	32.9
18-19	191	100.0	140	73.3	1	0.5	50	26.2
20-24	907	100.0	704	77.6	4	0.4	199	21.9
25-29	1,037	100.0	840	81.0	10	1.0	187	18.0
30-34	793	100.0	670	84.5	10	1.3	113	14.2
35-39	445	100.0	374	84.0	4	0.9	67	15.1
40+	110	100.0	92	83.6	0	0.0	18	16.4
Unknown	0	...	0	...	0	...	0	...
Non-Hispanic Other	831	100.0	766	92.2	2	0.2	63	7.6
<15	0	...	0	...	0	...	0	...
15-19	17	100.0	12	70.6	0	0.0	5	29.4
15-17	4	100.0	3	75.0	0	0.0	1	25.0
18-19	13	100.0	9	69.2	0	0.0	4	30.8
20-24	81	100.0	59	72.8	0	0.0	22	27.2
25-29	214	100.0	206	96.3	2	0.9	6	2.8
30-34	348	100.0	329	94.5	0	0.0	19	5.5
35-39	141	100.0	133	94.3	0	0.0	8	5.7
40+	30	100.0	27	90.0	0	0.0	3	10.0
Unknown	0	...	0	...	0	...	0	...
Hispanic*	1,930	100.0	1,750	90.7	12	0.6	168	8.7
<15	0	...	0	...	0	...	0	...
15-19	158	100.0	130	82.3	1	0.6	25	15.8
15-17	42	100.0	29	69.0	0	2.4	12	28.6
18-19	116	100.0	101	87.1	1	1.7	13	11.2
20-24	486	100.0	435	89.5	2	0.6	48	9.9
25-29	553	100.0	507	91.7	3	0.7	42	7.6
30-34	444	100.0	415	93.5	4	0.2	28	6.3
35-39	219	100.0	199	90.9	1	0.5	19	8.7
40+	70	100.0	64	91.4	1	0.0	6	8.6
Unknown	0	...	0	...	0	...	0	...

Notes:

1. Percentages may not add to 100% due to rounding.
2. Percentages are calculated based upon the total number of pregnancies within each race-age category.
3. Percentages for the age categories "<15" and "40+" may be misleading due to the small number of pregnancies in this category.
4. *Women of Hispanic origin may be of any race.

Source: Delaware Department of Health and Social Services, Division of Public Health, Delaware Health Statistics Center

TABLE D-3. NUMBER AND PERCENT OF REPORTED PREGNANCIES BY RACE, HISPANIC ORIGIN, AND EDUCATION OF WOMAN, DELAWARE, 2018

Race- Hispanic Origin/ Education	Reported Pregnancies							
	Total		Live Births		Fetal Deaths		Induced Terminations	
	Number	Percent	Number	Percent	Number	Percent	Number	Percent
All Races	12,156	100.0	10,593	87.1	59	0.5	1,504	12.4
<9	488	100.0	460	94.3	3	0.6	25	5.1
9 to 11	1,172	100.0	1,046	89.2	6	0.5	120	10.2
H.S. Grad	3,628	100.0	2,814	77.6	26	0.7	788	21.7
1 to 3 College	3,116	100.0	2,860	91.8	9	0.3	247	7.9
4+ College	3,546	100.0	3,348	94.4	11	0.3	187	5.3
Unknown	206	100.0	65	31.6	4	1.9	137	66.5
Non-Hispanic White	5,822	100.0	5,197	89.3	16	0.3	609	10.5
<9	94	100.0	88	93.6	1	1.1	5	5.3
9 to 11	420	100.0	373	88.8	3	0.7	44	10.5
H.S. Grad	1,446	100.0	1,105	76.4	7	0.5	334	23.1
1 to 3 College	1,572	100.0	1,488	94.7	0	0.0	84	5.3
4+ College	2,212	100.0	2,132	96.4	3	0.1	77	3.5
Unknown	78	100.0	11	14.1	2	2.6	65	83.3
Non-Hispanic Black	3,573	100.0	2,880	80.6	29	0.8	664	18.6
<9	29	100.0	23	79.3	0	0.0	6	20.7
9 to 11	389	100.0	346	88.9	1	0.3	42	10.8
H.S. Grad	1,463	100.0	1,091	74.6	15	1.0	357	24.4
1 to 3 College	997	100.0	868	87.1	7	0.7	122	12.2
4+ College	622	100.0	532	85.5	4	0.6	86	13.8
Unknown	73	100.0	20	27.4	2	2.7	51	69.9
Non-Hispanic Other	831	100.0	766	92.2	2	0.2	63	7.6
<9	11	100.0	11	100.0	0	0.0	0	0.0
9 to 11	39	100.0	34	87.2	0	0.0	5	12.8
H.S. Grad	111	100.0	88	79.3	0	0.0	23	20.7
1 to 3 College	128	100.0	115	89.8	1	0.8	12	9.4
4+ College	530	100.0	514	97.0	1	0.2	15	2.8
Unknown	12	100.0	4	33.3	0	0.0	8	66.7
Hispanic*	1,930	100.0	1,750	90.7	12	0.6	168	8.7
<9	354	100.0	338	95.5	2	0.6	14	4.0
9 to 11	324	100.0	293	90.4	2	0.6	29	9.0
H.S. Grad	608	100.0	530	87.2	4	0.7	74	12.2
1 to 3 College	419	100.0	389	92.8	1	0.2	29	6.9
4+ College	182	100.0	170	93.4	3	1.6	9	4.9
Unknown	43	100.0	30	69.8	0	0.0	13	30.2

Notes:

1. Percentages may not add to 100% due to rounding.
2. Percentages are calculated based upon the total number of pregnancies within each race-education category.
3. Percentages for the race category "Other" may be misleading due to the small number of pregnancies in this category.
4. *Women of Hispanic origin may be of any race.

Source: Delaware Department of Health and Social Services, Division of Public Health, Delaware Health Statistics Center

TABLE D-4. NUMBER AND PERCENT OF REPORTED PREGNANCIES BY RACE AND MARITAL STATUS OF WOMAN, DELAWARE AND COUNTIES, 2018

Area/Race/ Marital Status	Reported Pregnancies							
	Total		Live Births		Fetal Deaths		Induced Terminations	
	Number	Percent	Number	Percent	Number	Percent	Number	Percent
Delaware								
All Races	12,156	100.0	10,593	87.1	59	0.5	1,504	12.4
Married	5,829	100.0	5,622	96.4	19	0.3	188	3.2
Single	6,327	100.0	4,971	78.6	40	0.6	1,316	20.8
Non-Hispanic White	5,822	100.0	5,197	89.3	16	0.3	609	10.5
Married	3,462	100.0	3,374	97.5	4	0.1	84	2.4
Single	2,360	100.0	1,823	77.2	12	0.5	525	22.2
Non-Hispanic Black	3,573	100.0	2,880	80.6	29	0.8	664	18.6
Married	911	100.0	853	93.6	9	1.0	49	5.4
Single	2,662	100.0	2,027	76.1	20	0.8	615	23.1
Non-Hispanic Other	831	100.0	766	92.2	2	0.2	63	7.6
Married	706	100.0	678	96.0	1	0.1	27	3.8
Single	125	100.0	88	70.4	1	0.8	36	28.8
Kent								
All Races	2,485	100.0	2,149	86.5	13	0.5	323	13.0
Married	1,185	100.0	1,144	96.5	2	0.2	39	3.3
Single	1,300	100.0	1,005	77.3	11	0.8	284	21.8
Non-Hispanic White	1,341	100.0	1,205	89.9	5	0.4	131	9.8
Married	757	100.0	742	98.0	0	0.0	15	2.0
Single	584	100.0	463	79.3	5	0.9	116	19.9
Non-Hispanic Black	781	100.0	618	79.1	7	0.9	156	20.0
Married	229	100.0	213	93.0	1	0.4	15	6.6
Single	552	100.0	405	73.4	6	1.1	141	25.5
Non-Hispanic Other	101	100.0	89	88.1	0	0.0	12	11.9
Married	74	100.0	71	95.9	0	0.0	3	4.1
Single	27	100.0	18	66.7	0	0.0	9	33.3
New Castle								
All Races	7,144	100.0	6,165	86.3	37	0.5	942	13.2
Married	3,475	100.0	3,338	96.1	16	0.5	121	3.5
Single	3,669	100.0	2,827	77.1	21	0.6	821	22.4
Non-Hispanic White	3,063	100.0	2,710	88.5	9	0.3	344	11.2
Married	1,902	100.0	1,848	97.2	4	0.2	50	2.6
Single	1,161	100.0	862	74.2	5	0.4	294	25.3
Non-Hispanic Black	2,328	100.0	1,862	80.0	18	0.8	448	19.2
Married	566	100.0	526	92.9	8	1.4	32	5.7
Single	1,762	100.0	1,336	75.8	10	0.6	416	23.6
Non-Hispanic Other	668	100.0	622	93.1	2	0.3	44	6.6
Married	588	100.0	564	95.9	1	0.2	23	3.9
Single	80	100.0	58	72.5	1	1.3	21	26.3
Sussex								
All Races	2,527	100.0	2,279	90.2	9	0.4	239	9.5
Married	1,169	100.0	1,140	97.5	1	0.1	28	2.4
Single	1,358	100.0	1,139	83.9	8	0.6	211	15.5
Non-Hispanic White	1,418	100.0	1,282	90.4	2	0.1	134	9.4
Married	803	100.0	784	97.6	0	0.0	19	2.4
Single	615	100.0	498	81.0	2	0.3	115	18.7
Non-Hispanic Black	464	100.0	400	86.2	4	0.9	60	12.9
Married	116	100.0	114	98.3	0	0.0	2	1.7
Single	348	100.0	286	82.2	4	1.1	58	16.7
Non-Hispanic Other	62	100.0	55	88.7	0	0.0	7	11.3
Married	44	100.0	43	97.7	0	0.0	1	2.3
Single	18	100.0	12	66.7	0	0.0	6	33.3

Notes:

1. Percentages may not add to 100% due to rounding.
2. Percentages are calculated based upon the total number of pregnancies within each race-marital status category.
3. Percentages for the race category "Other" may be misleading due to the small number of pregnancies in this category.

Source: Delaware Department of Health and Social Services, Division of Public Health, Delaware Health Statistics Center

TABLE D-5. NUMBER OF REPORTED PREGNANCIES BY AGE OF WOMAN AND COUNTY, DELAWARE, 2008-2018

ALL RACES

Area/ Age	2008	2009	2010	2011	2012	2013	2014	2015	2016	2017	2018
Delaware	15,399	14,961	14,905	14,433	14,263	13,420	13,459	13,573	12,900	12,558	12,156
<15	47	33	34	32	28	18	18	17	16	8	9
15-19	1,846	1,574	1,574	1,378	1,172	1,067	926	823	791	701	662
15-17	607	488	504	427	348	304	273	241	217	198	179
18-19	1,239	1,086	1,070	951	824	763	653	582	574	503	483
20-24	4,141	4,028	3,908	3,702	3,703	3,290	3,156	3,059	2,651	2,545	2,409
25-29	4,327	4,172	4,187	4,118	3,990	3,797	3,924	3,966	3,855	3,795	3,544
30-34	3,035	3,134	3,211	3,279	3,427	3,424	3,508	3,623	3,548	3,476	3,494
35-39	1,647	1,558	1,581	1,536	1,564	1,451	1,525	1,720	1,681	1,670	1,672
40+	356	462	410	388	379	373	402	365	358	363	366
Kent	2,925	2,901	2,815	2,689	2,752	2,672	2,683	2,681	2,579	2,514	2,485
<15	5	5	4	3	2	2	3	3	3	2	2
15-19	356	291	304	267	235	201	169	149	187	158	159
15-17	111	86	98	73	60	53	44	43	47	45	35
18-19	245	205	206	194	175	148	125	106	140	113	96
20-24	899	971	852	773	808	778	754	731	612	598	592
25-29	823	825	827	831	783	785	844	847	859	803	771
30-34	511	528	529	551	597	611	631	612	595	604	667
35-39	277	203	227	217	262	228	231	288	257	272	268
40+	54	78	72	47	65	67	51	51	66	77	54
New Castle	9,382	9,233	9,360	9,143	8,781	8,225	8,153	8,236	7,759	7,494	7,144
<15	33	21	24	21	22	14	11	8	8	5	6
15-19	1,061	945	971	846	682	626	540	476	432	369	372
15-17	362	290	314	272	215	187	172	140	120	100	100
18-19	699	655	657	574	467	439	368	336	312	269	272
20-24	2,251	2,209	2,254	2,147	2,082	1,861	1,729	1,681	1,427	1,373	1,274
25-29	2,639	2,543	2,573	2,527	2,445	2,251	2,285	2,316	2,221	2,171	2,009
30-34	2,058	2,103	2,150	2,244	2,275	2,236	2,273	2,375	2,299	2,264	2,148
35-39	1,092	1,090	1,107	1,075	1,033	987	1,026	1,113	1,135	1,082	1,105
40+	248	322	281	283	242	250	289	267	237	230	230
Sussex	3,092	2,827	2,730	2,601	2,730	2,523	2,623	2,656	2,562	2,550	2,527
<15	9	7	6	8	4	2	4	6	5	1	1
15-19	429	338	299	265	255	240	217	198	172	174	159
15-17	134	112	92	82	73	64	57	58	50	53	44
18-19	295	226	207	183	182	176	160	140	122	121	115
20-24	991	848	802	782	813	651	673	647	612	574	543
25-29	865	804	787	760	762	761	795	803	775	821	764
30-34	466	503	532	484	555	577	604	636	654	608	679
35-39	278	265	247	244	269	236	268	319	289	316	299
40+	54	62	57	58	72	56	62	47	55	56	82

Note:
Reported pregnancies include live births, fetal deaths, and induced terminations of pregnancy.

Source: Delaware Department of Health and Social Services, Division of Public Health, Delaware Health Statistics Center

TABLE D-6. NUMBER OF REPORTED PREGNANCIES BY AGE OF WOMAN AND COUNTY, DELAWARE, 2008-2018

NON-HISPANIC WHITE

Area/ Age	2008	2009	2010	2011	2012	2013	2014	2015	2016	2017	2018
Delaware	7,737	7,520	7,676	7,533	7,396	6,870	6,767	6,822	6,548	6,003	5,822
<15	11	9	4	6	7	2	4	1	5	1	1
15-19	721	593	625	554	483	368	330	290	283	230	216
15-17	219	176	185	167	125	91	82	71	68	62	52
18-19	502	417	440	387	358	277	248	219	215	168	164
20-24	1,776	1,777	1,766	1,678	1,667	1,469	1,361	1,297	1,108	1,041	936
25-29	2,251	2,177	2,257	2,227	2,098	1,994	2,082	2,038	2,024	1,811	1,741
30-34	1,785	1,797	1,874	1,982	2,055	2,015	1,996	2,074	2,071	1,913	1,906
35-39	996	898	913	864	871	813	793	936	870	836	867
40+	197	269	237	222	215	209	201	186	187	171	155
Kent	1,696	1,657	1,647	1,589	1,603	1,518	1,531	1,492	1,445	1,323	1,341
<15	2	2	1	1	2	1	1	0	2	0	0
15-19	166	124	145	134	102	77	80	61	77	60	55
15-17	46	36	46	37	26	20	18	16	19	18	13
18-19	120	88	99	97	76	57	62	45	58	42	42
20-24	488	518	465	403	416	401	375	355	312	282	284
25-29	511	513	520	536	485	479	524	493	515	438	446
30-34	330	324	335	373	395	387	401	390	375	358	396
35-39	167	130	144	115	166	133	121	165	133	147	141
40+	32	46	37	27	37	40	29	28	31	38	19
New Castle	4,372	4,318	4,458	4,435	4,167	3,911	3,747	3,794	3,630	3,236	3,063
<15	4	6	3	3	3	1	2	0	1	1	1
15-19	347	306	322	268	231	169	134	145	137	106	95
15-17	112	79	99	89	57	41	35	34	31	28	22
18-19	235	227	223	179	174	128	99	111	106	78	73
20-24	830	842	891	865	774	717	635	600	485	463	390
25-29	1,229	1,217	1,262	1,250	1,153	1,067	1,077	1,058	1,031	881	844
30-34	1,184	1,167	1,197	1,296	1,316	1,267	1,233	1,286	1,277	1,174	1,089
35-39	641	604	619	597	556	560	526	575	578	506	549
40+	137	176	164	156	134	130	140	130	121	105	95
Sussex	1,669	1,545	1,571	1,509	1,626	1,441	1,489	1,536	1,473	1,444	1,418
<15	5	1	0	2	2	0	1	1	2	0	0
15-19	208	163	158	152	150	122	116	84	69	64	66
15-17	61	61	40	41	42	30	29	21	18	16	17
18-19	147	102	118	111	108	92	87	63	51	48	49
20-24	458	417	410	410	477	351	351	342	311	296	262
25-29	511	447	475	441	460	448	481	487	478	492	451
30-34	271	306	342	313	344	361	362	398	419	381	421
35-39	188	164	150	152	149	120	146	196	159	183	177
40+	28	47	36	39	44	39	32	28	35	28	41

Note:
Reported pregnancies include live births, fetal deaths, and induced terminations of pregnancy.

Source: Delaware Department of Health and Social Services, Division of Public Health, Delaware Health Statistics Center

TABLE D-7. NUMBER OF REPORTED PREGNANCIES BY AGE OF WOMAN AND COUNTY, DELAWARE, 2008-2018

NON-HISPANIC BLACK

Area/ Age	2008	2009	2010	2011	2012	2013	2014	2015	2016	2017	2018
Delaware	4,660	4,729	4,747	4,416	4,357	4,147	3,938	4,050	3,795	3,683	3,573
<15	27	17	24	23	16	8	12	9	6	6	8
15-19	773	702	714	591	489	480	393	336	325	281	273
15-17	267	224	228	183	167	132	129	110	95	85	82
18-19	506	478	486	408	322	348	264	226	230	196	191
20-24	1,523	1,505	1,528	1,451	1,447	1,301	1,175	1,183	1,017	933	907
25-29	1,212	1,219	1,188	1,116	1,142	1,077	1,065	1,158	1,100	1,162	1,037
30-34	663	753	768	743	792	810	804	831	807	771	793
35-39	354	407	412	385	374	373	386	441	438	426	445
40+	108	126	113	107	97	98	103	92	102	104	110
Kent	918	917	898	831	832	838	807	838	809	832	781
<15	3	1	3	2	0	0	1	3	1	2	2
15-19	144	127	136	108	111	87	61	63	77	64	55
15-17	52	39	43	29	27	23	18	22	17	16	17
18-19	92	88	93	79	84	64	43	41	60	48	38
20-24	323	334	306	293	284	287	275	277	225	228	216
25-29	239	238	215	211	219	221	225	247	244	252	219
30-34	129	140	144	126	137	153	156	147	150	166	181
35-39	64	55	64	75	68	69	72	87	92	91	87
40+	16	22	30	16	13	21	17	14	20	29	21
New Castle	3,180	3,236	3,299	3,068	3,019	2,805	2,623	2,744	2,499	2,378	2,328
<15	21	11	16	16	15	7	8	5	4	4	5
15-19	518	465	496	411	320	323	273	227	200	170	181
15-17	175	154	157	126	117	91	93	73	62	51	54
18-19	343	311	339	285	203	232	180	154	138	119	127
20-24	965	969	1,001	949	978	839	723	753	634	571	569
25-29	840	839	839	778	798	726	706	777	721	751	672
30-34	485	551	564	552	570	583	559	600	564	517	520
35-39	268	308	308	282	272	252	276	309	306	295	306
40+	83	93	75	80	66	75	78	73	70	70	75
Sussex	562	576	550	517	506	504	508	468	487	473	464
<15	3	5	5	5	1	1	3	1	1	0	1
15-19	111	110	82	72	58	70	59	46	48	47	37
15-17	40	31	28	28	23	18	18	15	16	18	11
18-19	71	79	54	44	35	52	41	31	32	29	26
20-24	235	202	221	209	185	175	177	153	158	134	122
25-29	133	142	134	127	125	130	134	134	135	159	146
30-34	49	62	60	65	85	74	89	84	93	88	92
35-39	22	44	40	28	34	52	38	45	40	40	52
40+	9	11	8	11	18	2	8	5	12	5	14

Note:
Reported pregnancies include live births, fetal deaths, and induced terminations of pregnancy.

Source: Delaware Department of Health and Social Services, Division of Public Health, Delaware Health Statistics Center

TABLE D-8. FIVE-YEAR AVERAGE RATE OF REPORTED PREGNANCIES BY AGE OF WOMAN AND COUNTY, DELAWARE , 2006-2018

ALL RACES

Area/ Age	2006- 2010	2007- 2011	2008- 2012	2009- 2013	2010- 2014	2011- 2015	2012- 2016	2013- 2017	2014- 2018
Delaware	85.1	83.9	82.4	80.3	78.6	77.1	75.2	73.1	71.5
<15	1.5	1.3	1.2	1.0	0.9	0.8	0.7	0.5	0.5
15-19	56.1	52.9	48.6	44.4	41.0	36.9	33.3	30.1	27.2
15-17	32.8	30.5	27.2	24.0	21.7	18.8	16.3	14.4	12.8
18-19	85.6	81.2	76.1	71.3	67.2	62.2	58.0	53.6	48.8
20-24	135.0	129.0	122.4	114.4	107.0	100.9	95.1	89.7	87.0
25-29	146.5	145.5	143.2	139.0	136.3	132.5	127.2	122.0	115.9
30-34	112.3	113.1	113.9	115.4	116.3	117.0	117.5	116.8	116.9
35-39	55.2	55.5	56.3	56.0	56.4	57.4	57.7	57.1	57.0
40+	6.1	6.1	6.1	6.2	6.0	6.0	6.0	6.1	6.2
Kent	86.7	85.1	83.7	81.7	79.9	78.3	77.0	74.9	73.2
<15	0.9	0.8	0.7	0.6	0.5	0.5	0.4	0.4	0.4
15-19	56.0	52.8	48.0	43.3	39.5	34.6	31.8	28.9	27.0
15-17	29.4	28.0	25.0	21.6	19.0	15.7	13.9	12.8	11.6
18-19	90.3	84.4	77.9	72.4	68.0	61.8	58.8	53.5	48.3
20-24	155.5	146.5	138.2	130.0	120.1	114.9	110.7	107.1	105.3
25-29	154.6	154.6	150.4	146.7	144.5	140.7	135.9	130.5	124.4
30-34	100.3	100.7	104.0	106.2	108.0	108.6	108.4	107.2	107.7
35-39	43.5	43.1	45.7	44.3	45.4	47.4	48.1	47.3	47.6
40+	5.5	5.3	5.4	5.6	5.1	4.8	5.2	5.5	5.3
New Castle	82.7	81.9	80.5	78.8	77.2	75.5	73.3	71.1	69.3
<15	1.6	1.4	1.4	1.2	1.1	0.9	0.7	0.5	0.4
15-19	51.6	48.7	44.9	41.3	38.0	33.8	30.0	26.9	24.2
15-17	31.3	28.7	25.5	22.7	20.9	18.0	15.4	13.3	11.7
18-19	78.3	74.8	70.3	66.0	61.4	55.8	51.0	46.8	42.8
20-24	115.5	111.0	105.9	99.6	93.3	87.4	81.7	77.3	75.2
25-29	141.0	140.4	139.1	135.0	131.7	126.9	120.1	113.0	105.5
30-34	118.7	120.2	120.3	121.4	122.0	122.7	122.7	122.3	121.9
35-39	60.8	61.2	61.4	61.6	61.7	62.1	61.9	61.1	60.8
40+	6.8	6.9	6.7	6.8	6.7	6.8	6.7	6.8	6.8
Sussex	92.3	90.1	87.9	84.1	82.4	81.3	80.2	78.0	76.9
<15	1.6	1.5	1.3	1.0	0.9	0.9	0.7	0.6	0.6
15-19	70.6	65.2	58.8	51.2	46.4	42.6	38.7	35.5	32.5
15-17	34.1	32.1	29.0	25.0	21.9	20.1	18.2	16.8	15.4
18-19	134.1	123.0	109.6	93.9	84.8	76.7	68.9	63.0	58.1
20-24	192.1	182.2	172.0	157.3	148.9	140.0	130.5	116.7	108.2
25-29	157.3	154.0	150.3	144.8	143.1	142.8	142.5	145.1	145.4
30-34	101.0	100.4	101.2	103.5	105.0	105.6	109.1	108.3	110.0
35-39	47.5	48.4	49.8	48.9	49.5	52.3	53.2	53.7	54.2
40+	4.2	4.3	4.7	4.8	4.8	4.7	4.7	4.5	5.0

Notes:

1. Reported pregnancies include live births, fetal deaths, and induced terminations of pregnancy.
2. For Delaware and counties, pregnancy rates represent the number of reported pregnancies to women of all ages per 1,000 women 15-44 years of age in the population.
3. For each age group, the denominator for the pregnancy rate is the total number women in the county/state within that age category except the "<15" and "40+" age categories which are based on women ages 10-14 and 40-49, respectively.

Source: Delaware Department of Health and Social Services, Division of Public Health, Delaware Health Statistics Center

TABLE D-9. FIVE-YEAR AVERAGE RATE OF REPORTED PREGNANCIES BY AGE OF WOMAN AND COUNTY, DELAWARE, 2006-2018

NON-HISPANIC WHITE

Area/ Age	2006- 2010	2007- 2011	2008- 2012	2009- 2013	2010- 2014	2011- 2015	2012- 2016	2013- 2017	2014- 2018
Delaware	70.9	70.8	70.5	69.6	68.8	67.6	66.1	63.8	62.0
<15	0.6	0.5	0.5	0.4	0.3	0.3	0.3	0.2	0.2
15-19	36.9	35.3	33.0	30.1	28.0	25.0	22.3	19.4	17.7
15-17	19.9	19.0	17.5	15.2	13.6	11.5	9.5	8.2	7.4
18-19	57.7	55.3	52.3	49.0	47.0	43.3	40.3	35.7	32.6
20-24	97.1	93.6	89.6	84.9	79.7	75.0	70.6	66.5	63.9
25-29	129.8	130.4	129.4	126.4	124.4	119.4	113.4	106.3	99.7
30-34	111.1	113.1	115.1	117.3	118.4	118.7	118.7	116.5	115.0
35-39	53.5	53.7	54.2	53.8	53.7	54.5	54.0	52.4	51.8
40+	5.2	5.3	5.3	5.5	5.3	5.2	5.2	5.1	5.0
Kent	81.6	81.0	80.6	79.2	78.0	76.3	74.5	71.5	69.7
<15	0.6	0.5	0.5	0.5	0.4	0.3	0.4	0.3	0.2
15-19	47.6	46.7	42.4	37.4	35.1	29.8	25.7	22.6	20.9
15-17	20.9	21.3	20.2	17.8	16.0	12.8	10.6	9.6	8.7
18-19	87.7	84.5	75.6	66.7	63.5	55.4	48.7	42.7	39.7
20-24	149.6	139.9	134.1	128.3	120.0	115.0	112.3	106.4	100.9
25-29	152.7	153.7	149.4	145.9	144.7	140.7	137.6	134.5	133.2
30-34	97.7	100.2	105.3	107.7	110.7	111.7	110.0	106.6	106.0
35-39	42.4	41.1	43.4	42.2	42.0	43.0	43.3	41.2	40.7
40+	4.8	4.5	4.6	4.8	4.4	4.2	4.4	4.6	4.1
New Castle	66.8	67.0	66.5	66.1	65.1	63.8	62.0	59.8	57.6
<15	0.5	0.5	0.4	0.4	0.3	0.2	0.2	0.1	0.1
15-19	30.0	28.4	26.1	24.1	22.0	19.7	17.9	15.7	14.3
15-17	18.3	17.1	15.0	12.8	11.5	9.5	7.5	6.5	5.9
18-19	42.0	40.1	38.1	36.9	34.6	32.7	32.1	28.8	26.4
20-24	71.1	69.7	66.0	62.7	58.7	54.4	50.1	47.9	46.3
25-29	120.5	121.2	120.6	118.2	114.8	107.8	99.0	88.7	79.7
30-34	121.1	123.7	125.2	126.9	127.3	127.5	126.9	124.6	121.8
35-39	61.0	61.7	61.9	62.8	62.9	62.7	61.8	59.3	57.6
40+	6.0	6.1	6.1	6.2	6.1	6.0	5.9	5.9	5.8
Sussex	73.6	72.9	73.2	71.4	71.0	70.5	69.8	67.7	67.0
<15	0.6	0.6	0.6	0.3	0.3	0.4	0.4	0.2	0.2
15-19	50.2	47.9	46.5	41.6	39.1	35.2	30.6	26.1	23.2
15-17	23.2	22.0	21.8	19.3	16.8	15.4	13.5	11.2	10.0
18-19	97.7	93.4	88.5	77.4	73.3	64.4	54.8	47.1	42.2
20-24	146.3	138.6	136.0	128.3	122.4	115.5	107.3	93.1	85.1
25-29	135.6	135.0	135.5	130.9	131.9	131.9	132.8	134.6	134.7
30-34	93.9	94.0	95.0	99.1	100.4	100.7	104.3	104.3	105.5
35-39	42.9	43.6	43.5	41.0	40.8	44.0	44.2	45.3	47.2
40+	3.5	3.6	3.9	4.2	4.0	3.9	3.9	3.6	3.7

Notes:

1. Reported pregnancies include live births, fetal deaths, and induced terminations of pregnancy.
2. For Delaware and counties, pregnancy rates represent the number of reported pregnancies to women of all ages per 1,000 women 15-44 years of age in the population.
3. For each age group, the denominator for the pregnancy rate is the total number women in the county/state within that age category except the "<15" and "40+" age categories which are based on women ages 10-14 and 40-49, respectively.
4. Comparisons using rates for the "<15" and "40+" age categories may be misleading due to the small number of events in these categories.

Source: Delaware Department of Health and Social Services, Division of Public Health, Delaware Health Statistics Center

TABLE D-10. FIVE-YEAR AVERAGE RATE OF REPORTED PREGNANCIES BY AGE OF WOMAN AND COUNTY, DELAWARE, 2006-2018

NON-HISPANIC BLACK

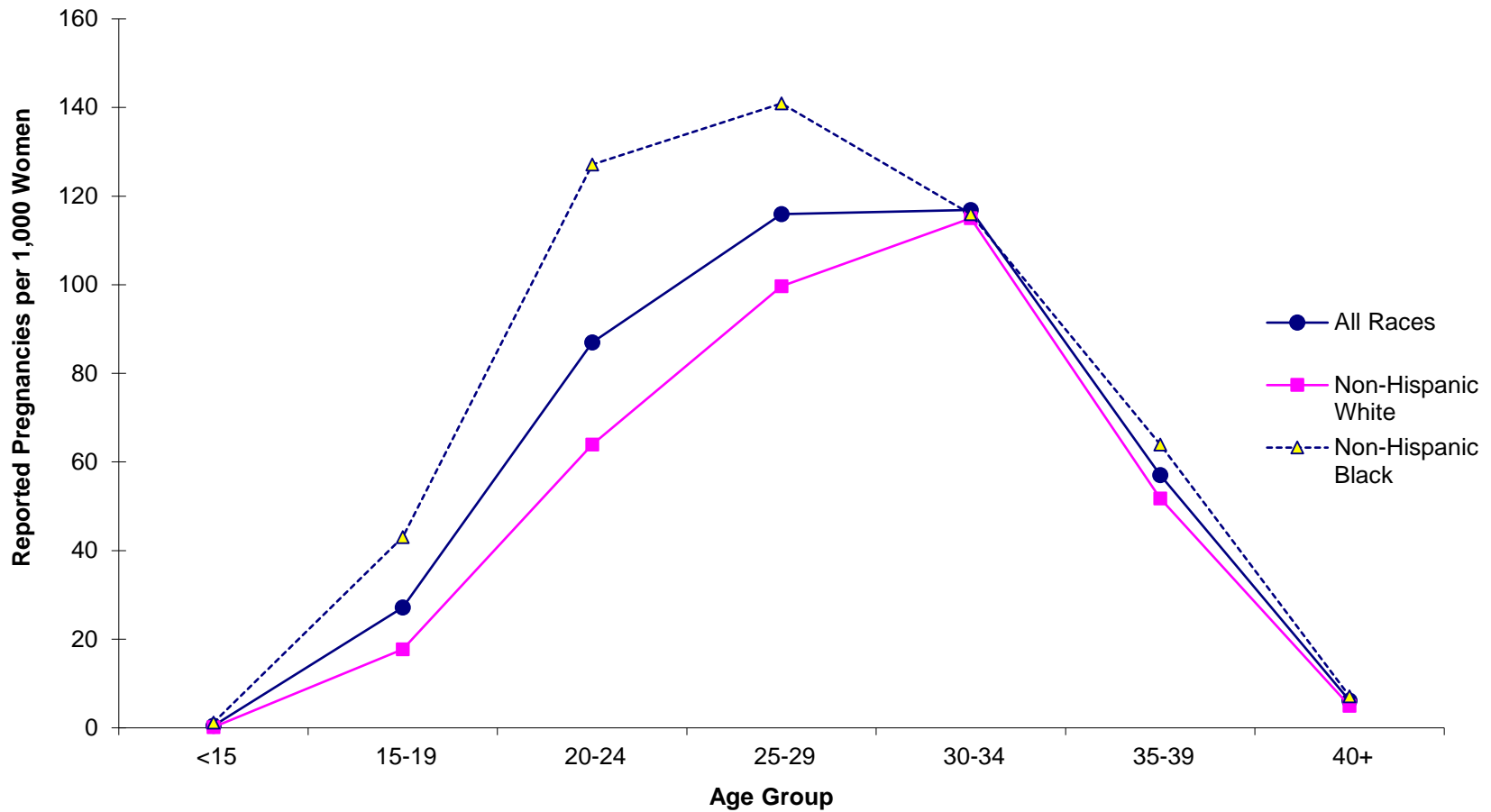
Area/ Age	2006- 2010	2007- 2011	2008- 2012	2009- 2013	2010- 2014	2011- 2015	2012- 2016	2013- 2017	2014- 2018
Delaware	109.6	108.7	106.9	104.3	100.4	96.9	93.7	90.2	87.1
<15	3.4	3.1	3.0	2.4	2.3	1.9	1.4	1.2	1.2
15-19	94.2	88.8	81.3	75.0	68.3	59.9	53.7	48.5	43.1
15-17	56.9	52.1	46.3	40.9	37.2	32.3	28.5	24.7	22.4
18-19	144.8	138.5	128.6	121.1	111.1	98.6	89.8	83.5	73.7
20-24	212.7	206.5	199.2	187.5	173.7	160.3	147.7	135.0	127.1
25-29	180.7	181.3	179.7	173.6	165.9	160.7	154.5	149.0	140.9
30-34	108.3	110.8	112.9	116.6	117.0	117.4	118.6	117.0	116.0
35-39	56.4	57.6	58.7	60.5	60.8	62.0	63.0	63.4	63.9
40+	7.2	7.4	7.2	7.0	6.7	6.5	6.5	6.8	7.1
Kent	101.7	99.8	97.0	94.3	91.1	89.1	88.0	87.5	85.7
<15	1.7	1.7	1.2	0.8	0.8	0.8	0.7	0.9	1.2
15-19	72.0	66.3	64.0	61.0	57.0	52.0	51.3	46.5	42.3
15-17	52.1	47.1	41.9	35.8	31.2	26.4	23.8	21.3	19.9
18-19	88.6	82.2	83.1	84.4	83.8	82.5	89.1	84.0	75.9
20-24	173.6	165.7	151.2	137.6	124.8	117.6	112.0	113.3	118.0
25-29	177.1	178.6	175.6	169.6	161.5	155.2	142.8	128.5	112.5
30-34	110.5	109.9	110.7	113.3	114.1	113.2	115.7	119.1	120.9
35-39	46.4	50.0	53.3	55.1	58.7	62.9	65.2	67.6	68.9
40+	7.3	7.5	7.1	7.4	7.0	5.8	6.2	7.5	7.6
New Castle	112.3	111.4	110.1	107.4	103.1	99.1	94.9	90.1	86.3
<15	3.6	3.2	3.3	2.7	2.6	2.1	1.7	1.2	1.1
15-19	100.2	95.3	86.9	79.2	72.1	61.9	53.5	47.6	42.0
15-17	58.3	52.9	47.2	42.1	38.7	33.6	29.3	24.8	22.2
18-19	165.9	161.9	148.2	135.3	121.6	103.3	88.6	81.3	71.3
20-24	222.6	215.8	213.1	203.9	189.1	174.0	157.8	137.9	125.3
25-29	184.4	185.3	184.6	177.9	169.9	164.6	159.5	155.7	150.0
30-34	114.3	116.9	118.7	122.5	122.0	122.2	122.4	119.4	116.6
35-39	60.5	61.3	61.8	62.4	62.1	62.7	63.2	63.2	64.1
40+	7.6	7.7	7.3	7.2	6.9	6.9	6.8	7.1	7.2
Sussex	108.2	109.1	106.3	104.5	102.0	98.8	97.5	95.9	93.8
<15	4.7	5.0	4.1	3.7	3.3	2.4	1.5	1.3	1.3
15-19	107.1	100.9	87.1	79.4	69.5	63.1	58.5	56.4	50.1
15-17	56.8	55.3	48.3	42.1	38.6	35.0	31.6	30.1	27.8
18-19	192.7	178.7	151.7	139.1	117.2	105.5	97.7	94.1	82.9
20-24	245.2	247.7	238.7	225.1	218.5	201.0	187.2	172.4	157.3
25-29	166.0	164.1	159.9	156.9	152.0	149.4	149.1	156.5	159.3
30-34	70.0	75.9	82.5	87.5	92.6	96.5	101.6	100.6	104.5
35-39	46.1	46.9	47.4	57.4	55.8	56.4	58.4	57.9	55.1
40+	4.8	5.1	6.1	5.4	5.2	5.0	5.2	3.9	5.5

Notes:

1. Reported pregnancies include live births, fetal deaths, and induced terminations of pregnancy.
2. For Delaware and counties, pregnancy rates represent the number of reported pregnancies to women of all ages per 1,000 women 15-44 years of age in the population.
3. For each age group, the denominator for the pregnancy rate is the total number women in the county/state within that age category except the "<15" and "40+" age categories which are based on women ages 10-14 and 40-49, respectively.
4. Comparisons using rates for the "<15" and "40+" age categories may be misleading due to the small number of events in these categories.

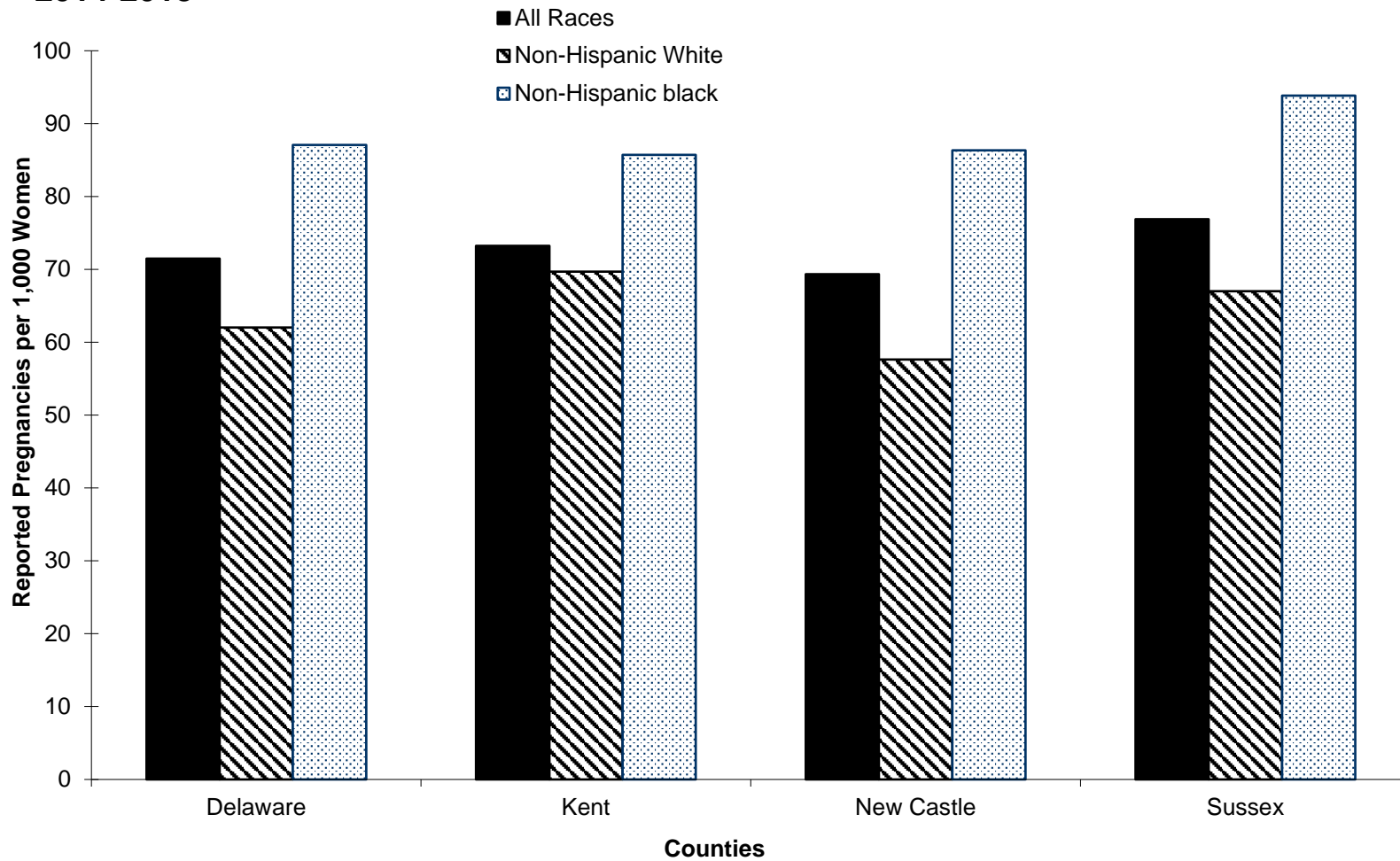
Source: Delaware Department of Health and Social Services, Division of Public Health, Delaware Health Statistics Center

Figure D-1. Five-year Average Rate of Reported Pregnancies by Age and Race, Delaware, 2014-2018



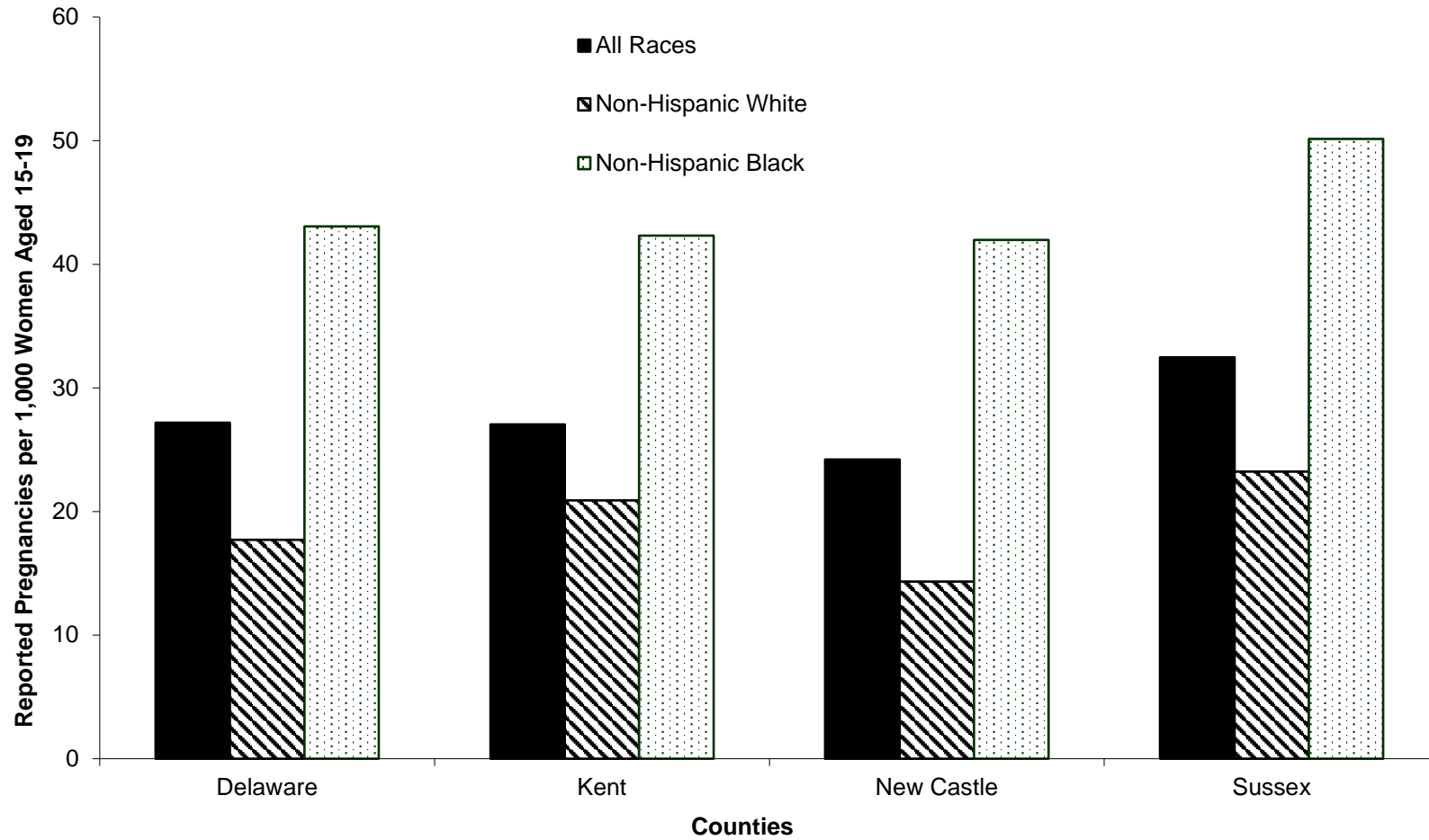
Source: Delaware Department of Health and Social Services, Division of Public Health, Delaware Health Statistics Center

Figure D-2. Five-year Average Rate of Reported Pregnancies by County and Race, Delaware, 2014-2018



Source: Delaware Department of Health and Social Services, Division of Public Health, Delaware Health Statistics Center

Figure D-3. Five-year Average Teenage (15-19) Pregnancy Rate by County and Race, Delaware, 2014-2018



Source: Delaware Department of Health and Social Services, Division of Public Health, Delaware Health Statistics Center

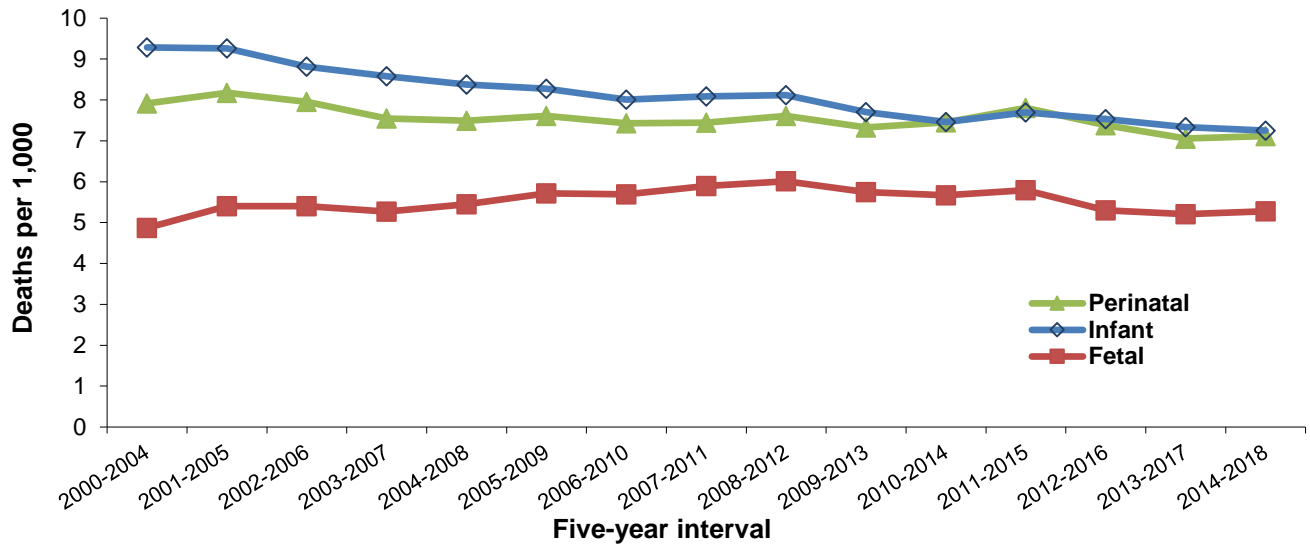
The background of the slide consists of several parallel, diagonal grey lines that create a textured, grid-like pattern across the entire page. The lines are evenly spaced and run from the top-left towards the bottom-right.

Fetal & Perinatal Deaths

FETAL AND PERINATAL DEATHS

Perinatal mortality refers to deaths occurring in the period around delivery, and includes late fetal deaths (>28 weeks gestation) and early infant deaths (<7 days of age). Perinatal mortality and infant mortality follow the same trends, decreasing from 2001-2005 until 2014-2018. By 2014-2018 the rates were nearly the same at 7.1 perinatal deaths per 1,000 live births and 7.3 infant deaths per 1,000 live births. The fetal death trends paralleled those of perinatal mortality trends with fetal death rates remaining constantly lower than perinatal rates.

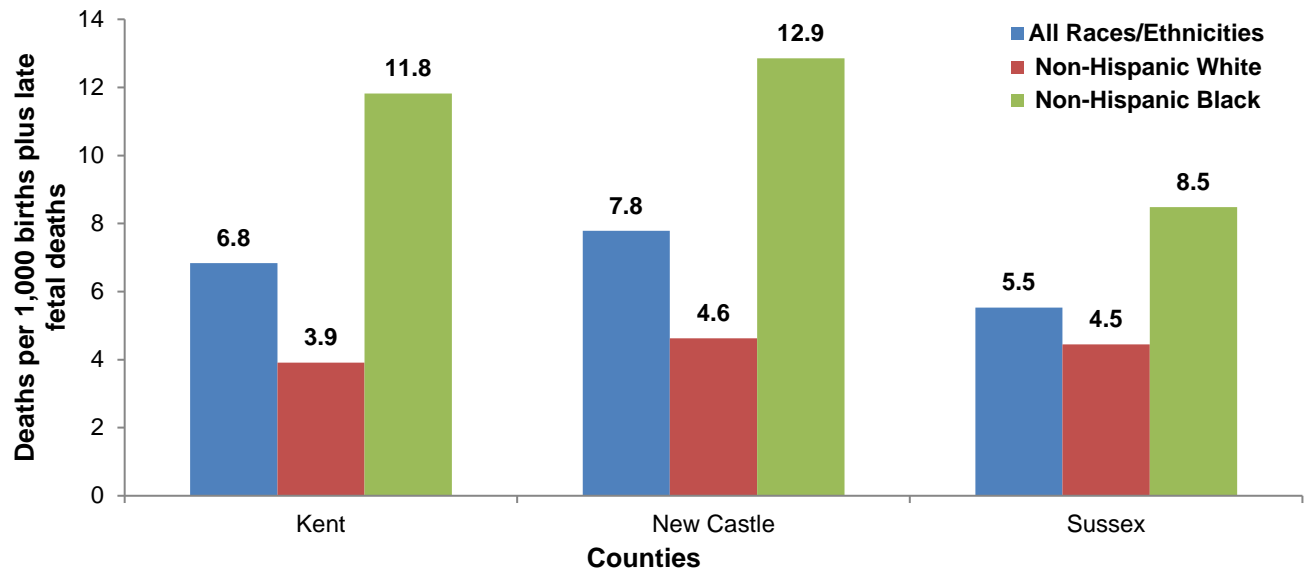
Figure 24. Five-year Fetal, Perinatal, and Infant Mortality Rates, Delaware, 2000-2018



Source: Delaware Department of Health and Social Services, Division of Public Health, Delaware Health Statistics Center

Non-Hispanic black perinatal mortality rates for 2014-2018 were substantially higher than non-Hispanic white perinatal mortality rates, regardless of county. In New Castle County, the non-Hispanic black perinatal mortality rate of 12.9 perinatal deaths per 1,000 live births was nearly three times the non-Hispanic white perinatal mortality rate of 4.6 perinatal deaths per 1,000 live births.

Figure 25. Five-year Average Perinatal Mortality Rates by Race and County, Delaware, 2014-2018

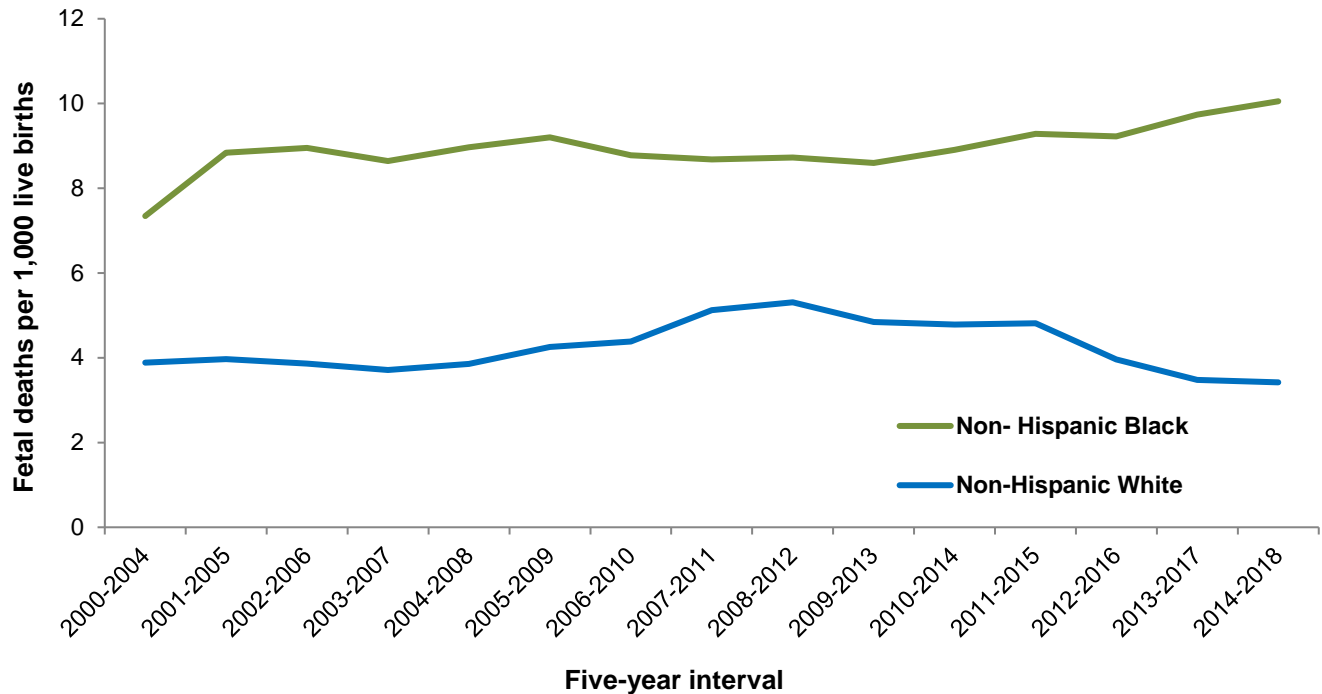


Source: Delaware Department of Health and Social Services, Division of Public Health, Delaware Health Statistics Center

FETAL AND PERINATAL DEATHS

In 2018, 59 fetal deaths were reported in Delaware. In 2014-2018, the fetal mortality rate was 5.3 fetal deaths per 1,000 live births. Fetal mortality rates for non-Hispanic black women have been consistently higher than the rates for non-Hispanic white women, and in 2014-2018 they were 197 percent higher than the rate of non-Hispanic white women (10.1 versus 3.4).

Figure 26. Five-year Average Fetal Mortality Rates by Mother's Race Delaware, 2000-2018



Source: Delaware Department of Health and Social Services, Division of Public Health, Delaware Health Statistics Center

TABLE D-11. NUMBER OF FETAL DEATHS BY RACE, HISPANIC ORIGIN, AND AGE OF WOMAN BY COUNTY, DELAWARE, 2018

Area/ Age	Race-Hispanic Origin				
	All Races	White Non-Hispanic	Black Non-Hispanic	Other Non-Hispanic	Hispanic*
Delaware	59	16	29	2	12
<20	3	1	1	0	1
20-24	7	1	4	0	2
25-34	42	13	20	2	7
35+	7	1	4	0	2
Unknown	0	0	0	0	0
Kent	13	5	7	0	1
<20	0	0	0	0	0
20-24	2	0	2	0	0
25-34	11	5	5	0	1
35+	0	0	0	0	0
Unknown	0	0	0	0	0
New Castle	37	9	18	2	8
<20	3	1	1	0	1
20-24	4	1	1	0	2
25-34	23	6	12	2	3
35+	7	1	4	0	2
Unknown	0	0	0	0	0
Sussex	9	2	4	0	3
<20	0	0	0	0	0
20-24	1	0	1	0	0
25-34	8	2	3	0	3
35+	0	0	0	0	0
Unknown	0	0	0	0	0

Notes:

Fetal deaths are reportable events if the fetus weighs at least 350 grams, or if weight is unknown, has reached at least 20 weeks of gestation. For more details, see "Basic Definitions".

*People of Hispanic origin may be of any race.

Source: Delaware Department of Health and Social Services, Division of Public Health, Delaware Health Statistics Center

TABLE D-12. NUMBER FETAL DEATHS BY RACE, HISPANIC ORIGIN, AND EDUCATION OF WOMAN, DELAWARE, 2018

Education	Race-Hispanic Origin				
	All Races	White Non-Hispanic	Black Non-Hispanic	Other Non-Hispanic	Hispanic*
Total	59	16	29	2	12
<9	3	1	0	0	2
9 to 11	6	3	1	0	2
H.S. Grad	26	7	15	0	4
1 to 3 College	9	0	7	1	1
4+ College	11	3	4	1	3
Unknown	4	2	2	0	0

Notes:

Fetal deaths are reportable events if the fetus weighs at least 350 grams, or if weight is unknown, has reached at least 20 weeks of gestation. For more details, see "Basic Definitions".

*People of Hispanic origin may be of any race.

Source: Delaware Department of Health and Social Services, Division of Public Health, Delaware Health Statistics Center

TABLE D-13. NUMBER OF FETAL DEATHS BY RACE, HISPANIC ORIGIN, AND MARITAL STATUS OF WOMAN BY COUNTY, DELAWARE, 2018

Area/ Marital Status	Race-Hispanic Origin				
	All Races	White Non-Hispanic	Black Non-Hispanic	Other Non-Hispanic	Hispanic*
Delaware	59	16	29	2	12
Married	19	4	9	1	5
Single	40	12	20	1	7
Kent	13	5	7	0	1
Married	2	0	1	0	1
Single	11	5	6	0	0
New Castle	37	9	18	2	8
Married	16	4	8	1	3
Single	21	5	10	1	5
Sussex	9	2	4	0	3
Married	1	0	0	0	1
Single	8	2	4	0	2

Note:

Fetal deaths are reportable events if the fetus weighs at least 350 grams, or if weight is unknown, has reached at least 20 weeks of gestation. For more details, see "Basic Definitions".

*People of Hispanic origin may be of any race.

Source: Delaware Department of Health and Social Services, Division of Public Health, Delaware Health Statistics Center

TABLE D-14. NUMBER OF FETAL DEATHS BY WEIGHT OF FETUS IN GRAMS AND RACE OF WOMAN BY COUNTY, DELAWARE, 2018

Area/ Weight	Race				
	All Races	White Non-Hispanic	Black Non-Hispanic	Other Non-Hispanic	Hispanic
Delaware	59	16	29	2	12
<500	9	1	7	0	1
500-749	8	3	5	0	0
750-999	5	0	3	0	2
1000-1499	10	5	2	1	2
1500-1999	6	1	3	0	2
2000-2499	9	2	6	0	1
2500+	11	4	2	1	4
Unknown	1	0	1	0	0
Kent	13	5	7	0	1
<500	3	1	2	0	0
500-749	1	0	1	0	0
750-999	0	0	0	0	0
1000-1499	3	2	1	0	0
1500-1999	3	1	1	0	1
2000-2499	0	0	0	0	0
2500+	2	1	1	0	0
Unknown	1	0	1	0	0
New Castle	37	9	18	2	8
<500	3	0	3	0	0
500-749	6	2	4	0	0
750-999	5	0	3	0	2
1000-1499	5	2	1	1	1
1500-1999	3	0	2	0	1
2000-2499	8	2	5	0	1
2500+	7	3	0	1	3
Unknown	0	0	0	0	0
Sussex	9	2	4	0	3
<500	3	0	2	0	1
500-749	1	1	0	0	0
750-999	0	0	0	0	0
1000-1499	2	1	0	0	1
1500-1999	0	0	0	0	0
2000-2499	1	0	1	0	0
2500+	2	0	1	0	1
Unknown	0	0	0	0	0

Note:

Fetal deaths are reportable events if the fetus weighs at least 350 grams, or if weight is unknown, has reached at least 20 weeks of gestation. For more details, see "Basic Definitions."

Source: Delaware Department of Health and Social Services, Division of Public Health, Delaware Health Statistics Center

TABLE D-15. NUMBER OF FETAL DEATHS BY WEEKS OF GESTATION AND RACE OF WOMAN BY COUNTY, DELAWARE, 2018

Area/ Age	Race				
	All Races	White Non-Hispanic	Black Non-Hispanic	Other Non-Hispanic	Hispanic
Delaware	59	16	29	2	12
<20 Weeks	1	0	1	0	0
20-24 Weeks	13	3	9	0	1
25-29 Weeks	13	4	7	0	2
30-34 Weeks	17	5	6	1	5
35-39 Weeks	14	3	6	1	4
40+ Weeks	1	1	0	0	0
Unknown	0	0	0	0	0
Kent	13	5	7	0	1
<20 Weeks	0	0	0	0	0
20-24 Weeks	3	0	3	0	0
25-29 Weeks	2	2	0	0	0
30-34 Weeks	5	2	3	0	0
35-39 Weeks	3	1	1	0	1
40+ Weeks	0	0	0	0	0
Unknown	0	0	0	0	0
New Castle	37	9	18	2	8
<20 Weeks	1	0	1	0	0
20-24 Weeks	7	3	4	0	0
25-29 Weeks	9	0	7	0	2
30-34 Weeks	10	3	3	1	3
35-39 Weeks	9	2	3	1	3
40+ Weeks	1	1	0	0	0
Unknown	0	0	0	0	0
Sussex	9	2	4	0	3
<20 Weeks	0	0	0	0	0
20-24 Weeks	3	0	2	0	1
25-29 Weeks	2	2	0	0	0
30-34 Weeks	2	0	0	0	2
35-39 Weeks	2	0	2	0	0
40+ Weeks	0	0	0	0	0
Unknown	0	0	0	0	0

Note:

Fetal deaths are reportable events if the fetus weighs at least 350 grams, or if weight is unknown, has reached at least 20 weeks of gestation. For more details, see "Basic Definitions".

Source: Delaware Department of Health and Social Services, Division of Public Health, Delaware Health Statistics Center

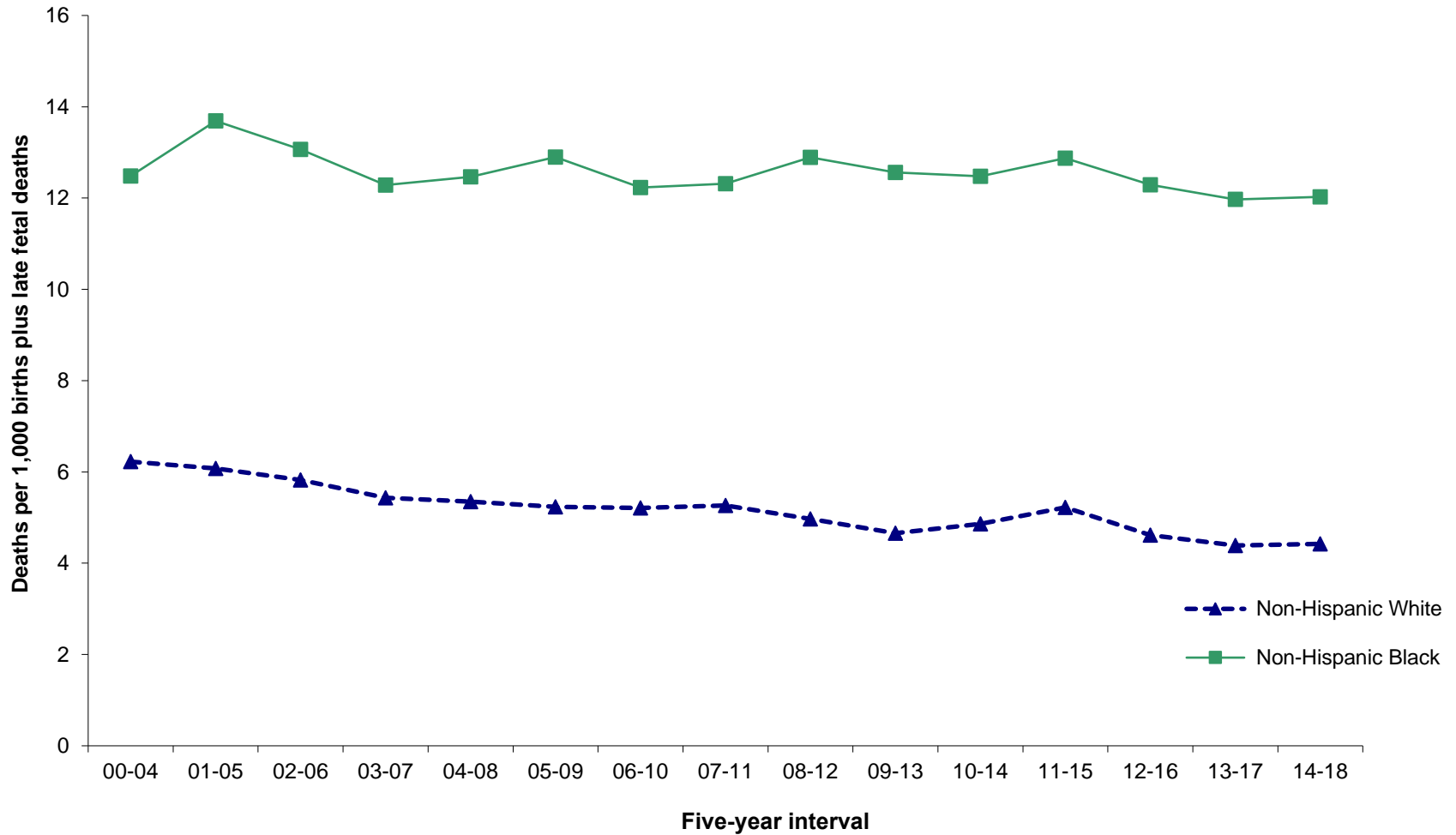
TABLE D-16. FIVE-YEAR AVERAGE PERINATAL MORTALITY RATES BY RACE AND COUNTY, DELAWARE, 2000-2018

Area/ Race	2000 -2004	2001 -2005	2002 -2006	2003 -2007	2004 -2008	2005 -2009	2006 -2010	2007 -2011	2008 -2012	2009 -2013	2010 -2014	2011 -2015	2012 -2016	2013 -2017	2014 -2018
Delaware															
All Races	7.9	8.2	8.0	7.5	7.5	7.6	7.4	7.4	7.6	7.3	7.5	7.8	7.4	7.1	7.1
White Non-Hispanic	6.2	6.1	5.8	5.4	5.3	5.2	5.2	5.3	5.0	4.7	4.9	5.2	4.6	4.4	4.4
Black Non-Hispanic	12.5	13.7	13.1	12.3	12.5	12.9	12.2	12.3	12.9	12.6	12.5	12.9	12.3	12.0	12.0
Kent															
All Races	8.2	8.7	8.0	5.8	6.0	6.3	5.9	6.2	7.1	6.3	6.1	6.7	6.5	6.2	6.8
White Non-Hispanic	7.4	7.2	5.8	3.4	3.5	3.4	3.9	4.2	4.3	4.0	4.3	4.0	3.8	3.5	3.9
Black Non-Hispanic	9.3	13.3	13.6	11.5	12.2	14.1	10.8	10.4	12.8	11.6	9.6	11.8	11.9	10.9	11.8
New Castle															
All Races	8.3	8.5	8.3	8.1	8.1	8.2	8.0	8.3	8.4	8.1	8.3	8.8	8.1	7.8	7.8
White Non-Hispanic	6.1	5.9	5.7	5.6	5.5	5.7	5.3	5.6	5.4	5.0	4.9	5.8	4.8	4.6	4.6
Black Non-Hispanic	14.0	14.2	13.5	12.8	12.9	12.5	12.9	13.6	13.4	13.4	14.3	14.1	12.9	13.2	12.9
Sussex															
All Races	6.2	6.6	6.9	7.3	7.0	7.0	7.3	6.1	5.9	6.1	6.3	5.9	6.3	5.7	5.5
White Non-Hispanic	5.3	5.4	6.2	7.0	6.9	5.9	6.3	5.5	4.4	4.5	5.4	5.1	5.0	4.8	4.5
Black Non-Hispanic	9.5	11.7	10.4	10.8	10.8	13.1	11.0	9.1	10.4	10.0	8.3	8.5	10.0	7.9	8.5

Note: Perinatal mortality rate defined as: Infant deaths of less than 7 days and fetal deaths with gestation of 28 weeks or more, per 1,000 live births and specified fetal deaths.

Source: Delaware Department of Health and Social Services, Division of Public Health, Delaware Health Statistics Center

Figure D-4. Five-year Average Perinatal Mortality Rates by Race, Delaware, 2000- 2018



Source: Delaware Department of Health and Social Services, Division of Public Health, Delaware Health Statistics Center

TABLE D-17. NUMBER AND PERCENT OF INDUCED TERMINATIONS OF PREGNANCY BY SELECTED CHARACTERISTICS, DELAWARE, 2018

Characteristic	Number	Percent	Characteristic	Number	Percent
Total	1740	100.0%	Marital Status		
Place of Residence			Married	214	12.3%
Delaware	1504	86.4%	Single	1526	87.7%
Kent	323	18.6%	Unknown	0	0.0%
New Castle	942	54.1%	Weeks of Gestation		
Sussex	239	13.7%	<7 Weeks	314	18.0%
Maryland	107	6.1%	7 Weeks	309	17.8%
New Jersey	23	1.3%	8 Weeks	257	14.8%
Pennsylvania	93	5.3%	9-10 Weeks	453	26.0%
Other State	13	0.7%	11-12 Weeks	197	11.3%
Age			13-15 Weeks	168	9.7%
<15	4	0.2%	16-20 Weeks	31	1.8%
15-17	72	4.1%	21+ Weeks	9	0.5%
18-19	129	7.4%	Unknown	2	0.1%
20-24	516	29.7%	Type of Procedure		
25-29	473	27.2%	Suction Curettage	905	52.0%
30-34	314	18.0%	Medical (Nonsurgical)	831	47.8%
35-39	175	10.1%	Intrauterine Installation	0	0.0%
40+	57	3.3%	Other	1	0.1%
Unknown	0	0.0%	Unknown	3	0.2%
Race			Previous Pregnancies		
White	862	49.5%	None	563	32.4%
Black	783	45.0%	1	356	20.5%
American Indian	2	0.1%	2	270	15.5%
Asian and Pacific Islander	36	2.1%	3+	547	31.4%
Other Races	57	3.3%	Unknown	4	0.2%
Unknown	0		Previous Live Births		
Hispanic Origin			None	763	43.9%
Yes	193	11.1%	1	421	24.2%
No	1535	88.2%	2	313	18.0%
Unknown	12	0.7%	3+	242	13.9%
Level of Education			Unknown	1	0.1%
<9	27	1.6%	Previous Induced Abortions		
9-11	134	7.7%	None	1101	63.3%
H.S. Graduate	892	51.3%	1	406	23.3%
1 to 3 College	298	17.1%	2	151	8.7%
4+ College	231	13.3%	3+	76	4.4%
Unknown	158	9.1%	Unknown	6	0.3%

Notes:

1. Suction Curettage includes Dilation and Evacuation.
2. Women of Hispanic origin may be of any race.
3. Percentages for each characteristic may not add to 100% due to rounding.
4. Percentages are based on the total number of induced terminations of pregnancy.

Source: Delaware Department of Health and Social Services, Division of Public Health, Delaware Health Statistics Center

TABLE D-18. NUMBER AND PERCENT OF INDUCED TERMINATIONS OF PREGNANCY BY PLACE OF RESIDENCE, RACE, AND AGE OF NON-HISPANIC WOMAN, DELAWARE, 2018

Place of Residence/ Race	Age														Unknown	
	Total		<18		18-19		20-24		25-29		30-34		35+		Number	Percent
	Number	Percent	Number	Percent	Number	Percent	Number	Percent	Number	Percent	Number	Percent	Number	Percent		
All Terminations	1,547	100.0	61	3.9	112	7.2	460	29.7	426	27.5	283	18.3	205	13.3	0	0.0
Non-Hispanic White	747	100.0	27	3.6	49	6.6	210	28.1	218	29.2	145	19.4	98	13.1	0	0.0
Non-Hispanic Black	729	100.0	32	4.4	59	8.1	225	30.9	200	27.4	119	16.3	94	12.9	0	0.0
Non-Hispanic Other	71	100.0	2	2.8	4	5.6	25	35.2	8	11.3	19	26.8	13	18.3	0	0.0
Delaware	1,336	100.0	50	3.7	91	6.8	394	29.5	371	27.8	255	19.1	175	13.1	0	0.0
Non-Hispanic White	609	100.0	19	3.1	37	6.1	173	28.4	178	29.2	123	20.2	79	13.0	0	0.0
Non-Hispanic Black	664	100.0	30	4.5	50	7.5	199	30.0	187	28.2	113	17.0	85	12.8	0	0.0
Non-Hispanic Other	63	100.0	1	1.6	4	6.3	22	34.9	6	9.5	19	30.2	11	17.5	0	0.0
Kent	299	100.0	12	4.0	22	7.4	94	31.4	77	25.8	59	19.7	35	11.7	0	0.0
Non-Hispanic White	131	100.0	5	3.8	8	6.1	41	31.3	40	30.5	27	20.6	10	7.6	0	0.0
Non-Hispanic Black	156	100.0	6	3.8	11	7.1	49	31.4	36	23.1	31	19.9	23	14.7	0	0.0
Non-Hispanic Other	12	100.0	1	8.3	3	25.0	4	33.3	1	8.3	1	8.3	2	16.7	0	0.0
New Castle	836	100.0	33	3.9	58	6.9	237	28.3	235	28.1	158	18.9	115	13.8	0	0.0
Non-Hispanic White	344	100.0	9	2.6	19	5.5	95	27.6	98	28.5	71	20.6	52	15.1	0	0.0
Non-Hispanic Black	448	100.0	24	5.4	38	8.5	129	28.8	133	29.7	70	15.6	54	12.1	0	0.0
Non-Hispanic Other	44	100.0	0	0.0	1	2.3	13	29.5	4	9.1	17	38.6	9	20.5	0	0.0
Sussex	201	100.0	5	2.5	11	5.5	63	31.3	59	29.4	38	18.9	25	12.4	0	0.0
Non-Hispanic White	134	100.0	5	3.7	10	7.5	37	27.6	40	29.9	25	18.7	17	12.7	0	0.0
Non-Hispanic Black	60	100.0	0	0.0	1	1.7	21	35.0	18	30.0	12	20.0	8	13.3	0	0.0
Non-Hispanic Other	7	100.0	0	0.0	0	0.0	5	71.4	1	14.3	1	14.3	0	0.0	0	0.0
Other State	211	100.0	11	5.2	21	10.0	66	31.3	55	26.1	28	13.3	30	14.2	0	0.0
Non-Hispanic White	138	100.0	8	5.8	12	8.7	37	26.8	40	29.0	22	15.9	19	13.8	0	0.0
Non-Hispanic Black	65	100.0	2	3.1	9	13.8	26	40.0	13	20.0	6	9.2	9	13.8	0	0.0
Non-Hispanic Other	8	100.0	1	12.5	0	0.0	3	37.5	2	25.0	0	0.0	2	25.0	0	0.0

Notes:

1. Percentages may not add to 100% due to rounding.
2. Percentages are calculated based upon the total number of induced terminations of pregnancy in each race category.
3. Percentages for the race category "Other" may be misleading due to the small number of induced terminations of pregnancy in this category.

Source: Delaware Department of Health and Social Services, Division of Public Health, Delaware Health Statistics Center

TABLE D-19. NUMBER OF INDUCED TERMINATIONS OF PREGNANCY BY PLACE OF RESIDENCE, WEEKS OF GESTATION, AND AGE OF WOMAN, DELAWARE, 2018

Place of Residence/ Weeks	Age								
	Total	<15	15-17	18-19	20-24	25-29	30-34	35-39	40+
All Terminations	1,740	4	72	129	516	473	314	175	57
<7 Weeks	314	0	10	18	90	89	54	31	22
7 Weeks	309	0	12	25	88	86	61	34	3
8 Weeks	257	0	7	15	85	77	43	20	10
9-10 Weeks	453	0	14	32	140	118	83	52	14
11-12 Weeks	197	1	11	20	60	53	34	16	2
13-15 Weeks	168	2	15	16	49	41	29	13	3
16-20 Weeks	31	0	3	2	3	5	8	8	2
21+ Weeks	9	1	0	1	0	3	2	1	1
Unknown	2	0	0	0	1	1	0	0	0
Delaware	1,504	4	58	104	442	413	283	152	48
<7 Weeks	255	0	9	12	75	69	43	27	20
7 Weeks	260	0	11	16	76	73	54	28	2
8 Weeks	225	0	7	13	71	68	39	17	10
9-10 Weeks	399	0	7	28	122	109	77	46	10
11-12 Weeks	176	1	10	18	50	48	32	15	2
13-15 Weeks	153	2	12	15	45	39	28	10	2
16-20 Weeks	26	0	2	1	2	4	8	8	1
21+ Weeks	8	1	0	1	0	2	2	1	1
Unknown	2	0	0	0	1	1	0	0	0
Kent	323	1	12	24	98	87	63	34	4
<7 Weeks	56	0	4	2	17	16	10	5	2
7 Weeks	61	0	1	6	19	17	11	7	0
8 Weeks	40	0	0	4	15	11	5	5	0
9-10 Weeks	86	0	2	6	24	25	18	9	2
11-12 Weeks	39	1	1	3	9	8	11	6	0
13-15 Weeks	36	0	3	2	14	10	5	2	0
16-20 Weeks	5	0	1	1	0	0	3	0	0
21+ Weeks	0	0	0	0	0	0	0	0	0
Unknown	0	0	0	0	0	0	0	0	0
New Castle	942	3	37	67	267	259	177	97	35
<7 Weeks	150	0	2	7	43	37	28	18	15
7 Weeks	158	0	8	8	44	49	32	15	2
8 Weeks	146	0	6	8	45	44	25	11	7
9-10 Weeks	262	0	4	21	78	73	50	31	5
11-12 Weeks	112	0	9	10	33	30	20	8	2
13-15 Weeks	86	2	7	12	22	21	15	5	2
16-20 Weeks	20	0	1	0	1	4	5	8	1
21+ Weeks	6	1	0	1	0	0	2	1	1
Unknown	2	0	0	0	1	1	0	0	0
Sussex	239	0	9	13	77	67	43	21	9
<7 Weeks	49	0	3	3	15	16	5	4	3
7 Weeks	41	0	2	2	13	7	11	6	0
8 Weeks	39	0	1	1	11	13	9	1	3
9-10 Weeks	51	0	1	1	20	11	9	6	3
11-12 Weeks	25	0	0	5	8	10	1	1	0
13-15 Weeks	31	0	2	1	9	8	8	3	0
16-20 Weeks	1	0	0	0	1	0	0	0	0
21+ Weeks	2	0	0	0	0	2	0	0	0
Unknown	0	0	0	0	0	0	0	0	0
Other State	236	0	14	25	74	60	31	23	9
<7 Weeks	59	0	1	6	15	20	11	4	2
7 Weeks	49	0	1	9	12	13	7	6	1
8 Weeks	32	0	0	2	14	9	4	3	0
9-10 Weeks	54	0	7	4	18	9	6	6	4
11-12 Weeks	21	0	1	2	10	5	2	1	0
13-15 Weeks	15	0	3	1	4	2	1	3	1
16-20 Weeks	5	0	1	1	1	1	0	0	1
21+ Weeks	1	0	0	0	0	1	0	0	0
Unknown	0	0	0	0	0	0	0	0	0

Note:
Weeks of gestation are based on clinical estimate.

Source: Delaware Department of Health and Social Services, Division of Public Health,
Delaware Health Statistics Center

TABLE D-20. NUMBER OF INDUCED TERMINATIONS OF PREGNANCY BY PLACE OF RESIDENCE, AGE OF WOMAN, AND NUMBER OF PREVIOUS PREGNANCIES, DELAWARE, 2018

Place of Residence/ Age	Number of Previous Pregnancies					Not Stated
	Total	None	1	2	3+	
All Terminations	1,740	563	356	270	547	4
<20	205	170	30	4	1	0
20-24	516	238	142	78	57	1
25-29	473	101	103	81	186	2
30-34	314	31	61	65	156	1
35-39	175	16	13	32	114	0
40+	57	7	7	10	33	0
Unknown	0	0	0	0	0	0
Delaware	1,504	464	305	240	491	4
<20	166	135	27	3	1	0
20-24	442	201	117	71	52	1
25-29	413	83	89	73	166	2
30-34	283	26	54	59	143	1
35-39	152	13	13	25	101	0
40+	48	6	5	9	28	0
Unknown	0	0	0	0	0	0
Kent	323	104	62	50	106	1
<20	37	30	7	0	0	0
20-24	98	52	23	13	10	0
25-29	87	16	21	17	32	1
30-34	63	6	9	14	34	0
35-39	34	0	2	5	27	0
40+	4	0	0	1	3	0
Unknown	0	0	0	0	0	0
New Castle	942	287	196	146	310	3
<20	107	89	16	1	1	0
20-24	267	118	78	42	28	1
25-29	259	49	55	47	107	1
30-34	177	16	36	32	92	1
35-39	97	10	6	16	65	0
40+	35	5	5	8	17	0
Unknown	0	0	0	0	0	0
Sussex	239	73	47	44	75	0
<20	22	16	4	2	0	0
20-24	77	31	16	16	14	0
25-29	67	18	13	9	27	0
30-34	43	4	9	13	17	0
35-39	21	3	5	4	9	0
40+	9	1	0	0	8	0
Unknown	0	0	0	0	0	0
Other State	236	99	51	30	56	0
<20	39	35	3	1	0	0
20-24	74	37	25	7	5	0
25-29	60	18	14	8	20	0
30-34	31	5	7	6	13	0
35-39	23	3	0	7	13	0
40+	9	1	2	1	5	0
Unknown	0	0	0	0	0	0

Source: Delaware Department of Health and Social Services, Division of Public Health, Delaware Health Statistics Center

TABLE D-21. NUMBER OF INDUCED TERMINATIONS OF PREGNANCY BY PLACE OF RESIDENCE, AGE OF WOMAN, AND NUMBER OF PREVIOUS LIVE BIRTHS, DELAWARE, 2018

Place of Residence/ Age	Number of Previous Live Births					
	Total	None	1	2	3+	Not Stated
All Terminations	1,740	763	421	313	242	1
<20	205	184	19	1	1	0
20-24	516	310	145	50	11	0
25-29	473	170	125	106	71	1
30-34	314	66	90	86	72	0
35-39	175	24	23	56	72	0
40+	57	9	19	14	15	0
Unknown	0	0	0	0	0	0
Delaware	1,504	628	373	281	221	1
<20	166	146	18	1	1	0
20-24	442	259	125	47	11	0
25-29	413	142	113	94	63	1
30-34	283	56	80	78	69	0
35-39	152	17	21	49	65	0
40+	48	8	16	12	12	0
Unknown	0	0	0	0	0	0
Kent	323	142	72	65	43	1
<20	37	32	5	0	0	0
20-24	98	66	22	7	3	0
25-29	87	30	24	23	9	1
30-34	63	14	15	20	14	0
35-39	34	0	4	14	16	0
40+	4	0	2	1	1	0
Unknown	0	0	0	0	0	0
New Castle	942	391	232	180	139	0
<20	107	95	10	1	1	0
20-24	267	157	73	30	7	0
25-29	259	88	71	58	42	0
30-34	177	31	55	49	42	0
35-39	97	13	11	32	41	0
40+	35	7	12	10	6	0
Unknown	0	0	0	0	0	0
Sussex	239	95	69	36	39	0
<20	22	19	3	0	0	0
20-24	77	36	30	10	1	0
25-29	67	24	18	13	12	0
30-34	43	11	10	9	13	0
35-39	21	4	6	3	8	0
40+	9	1	2	1	5	0
Unknown	0	0	0	0	0	0
Other State	236	135	48	32	21	0
<20	39	38	1	0	0	0
20-24	74	51	20	3	0	0
25-29	60	28	12	12	8	0
30-34	31	10	10	8	3	0
35-39	23	7	2	7	7	0
40+	9	1	3	2	3	0
Unknown	0	0	0	0	0	0

Source: Delaware Department of Health and Social Services, Division of Public Health, Delaware Health Statistics Center

TABLE D-22. NUMBER OF INDUCED TERMINATIONS OF PREGNANCY BY PLACE OF RESIDENCE, AGE OF WOMAN, AND NUMBER OF PREVIOUS LIVE BIRTHS, DELAWARE, 2018

Place of Residence/ Age	Number of Previous Induced Terminations					
	Total	None	1	2	3+	Not Stated
All Terminations	1,740	1,101	406	151	76	6
<20	205	193	12	0	0	0
20-24	516	387	96	27	5	1
25-29	473	255	139	55	23	1
30-34	314	148	100	39	24	3
35-39	175	92	39	23	20	1
40+	57	26	20	7	4	0
Unknown	0	0	0	0	0	0
Delaware	1,504	947	345	136	71	5
<20	166	158	8	0	0	0
20-24	442	333	79	24	5	1
25-29	413	219	120	52	21	1
30-34	283	134	90	33	23	3
35-39	152	81	33	20	18	0
40+	48	22	15	7	4	0
Unknown	0	0	0	0	0	0
Kent	323	207	73	34	9	0
<20	37	35	2	0	0	0
20-24	98	78	15	4	1	0
25-29	87	52	21	12	2	0
30-34	63	25	24	10	4	0
35-39	34	17	9	6	2	0
40+	4	0	2	2	0	0
Unknown	0	0	0	0	0	0
New Castle	942	583	215	84	55	5
<20	107	103	4	0	0	0
20-24	267	199	50	15	2	1
25-29	259	130	77	34	17	1
30-34	177	84	55	18	17	3
35-39	97	50	18	13	16	0
40+	35	17	11	4	3	0
Unknown	0	0	0	0	0	0
Sussex	239	157	57	18	7	0
<20	22	20	2	0	0	0
20-24	77	56	14	5	2	0
25-29	67	37	22	6	2	0
30-34	43	25	11	5	2	0
35-39	21	14	6	1	0	0
40+	9	5	2	1	1	0
Unknown	0	0	0	0	0	0
Other State	236	154	61	15	5	1
<20	39	35	4	0	0	0
20-24	74	54	17	3	0	0
25-29	60	36	19	3	2	0
30-34	31	14	10	6	1	0
35-39	23	11	6	3	2	1
40+	9	4	5	0	0	0
Unknown	0	0	0	0	0	0

Source: Delaware Department of Health and Social Services, Division of Public Health, Delaware Health Statistics Center