

DELAWARE VITAL STATISTICS ANNUAL REPORT POPULATION, 2018

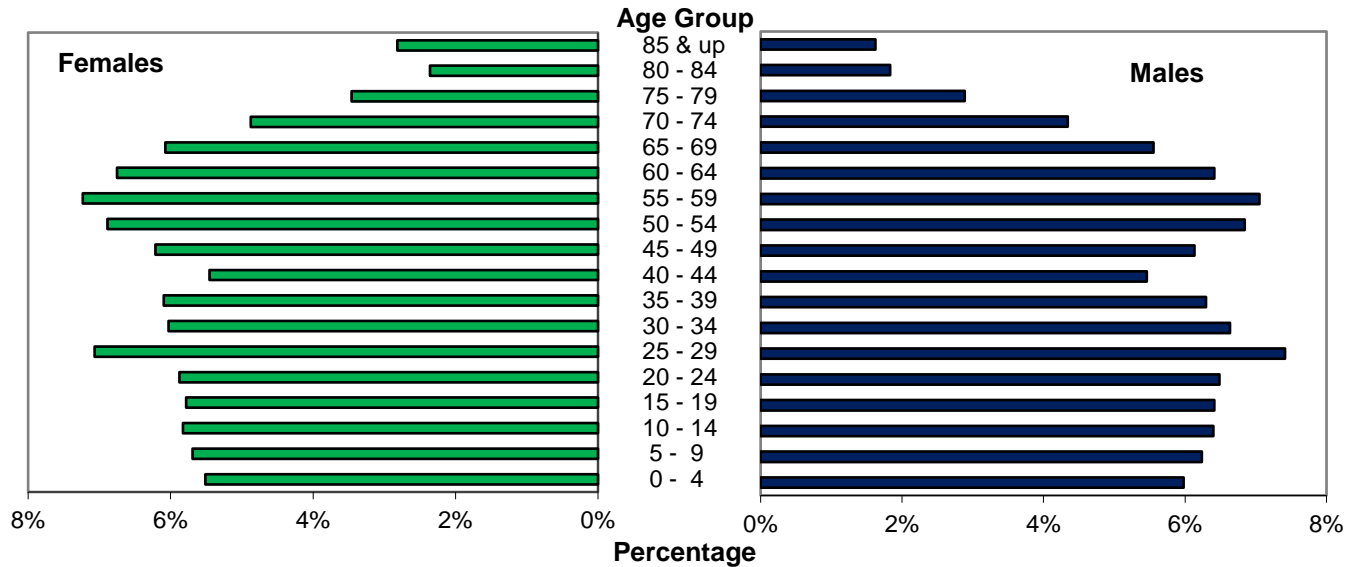


Suggested Citation:

Delaware Health Statistics Center. *Delaware Vital Statistics Annual Report, 2018*.
Delaware Department of Health and Social Services, Division of Public Health: 2020.

In 2018, nearly 52 percent of Delaware’s population was female. Females made up a greater proportion of the older age groups, which reflects the longer female life expectancy. Delaware females born in 2018 can expect to live an average of 81.6 years versus males who can expect to live 75.4 years.

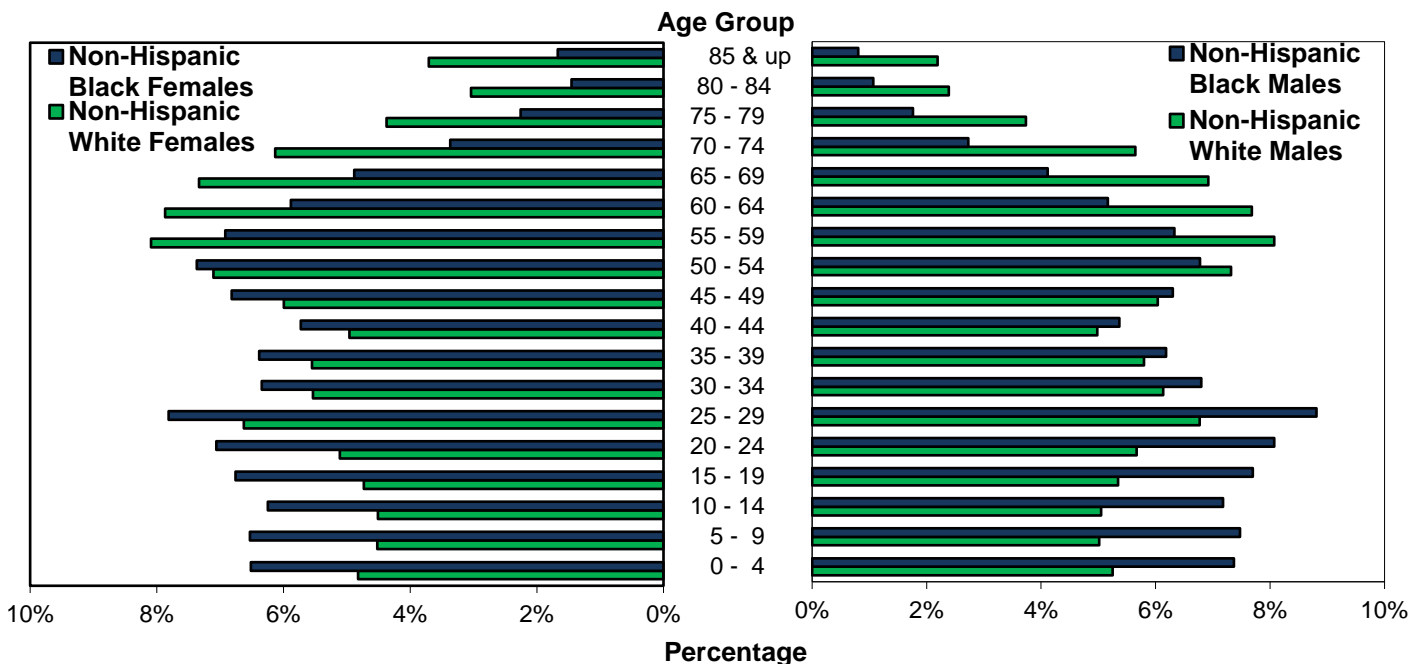
Figure 3. Population by Gender, Delaware, 2018



Source: Delaware Department of Health and Social Services, Division of Public Health, Delaware Health Statistics Center

When the population was broken down by race, the highest proportion of females in the older age groups appeared in the non-Hispanic white population. However, both non-Hispanic black males and females had a greater percentage of their population in the 0-49 year age range than non-Hispanic white males and females. In the 55 and above age range for both males and females, whites made up a greater proportion of the population.

Figure 4. Non-Hispanic Population by Gender and Race, Delaware, 2018



Source: Delaware Department of Health and Social Services, Division of Public Health, Delaware Health Statistics Center

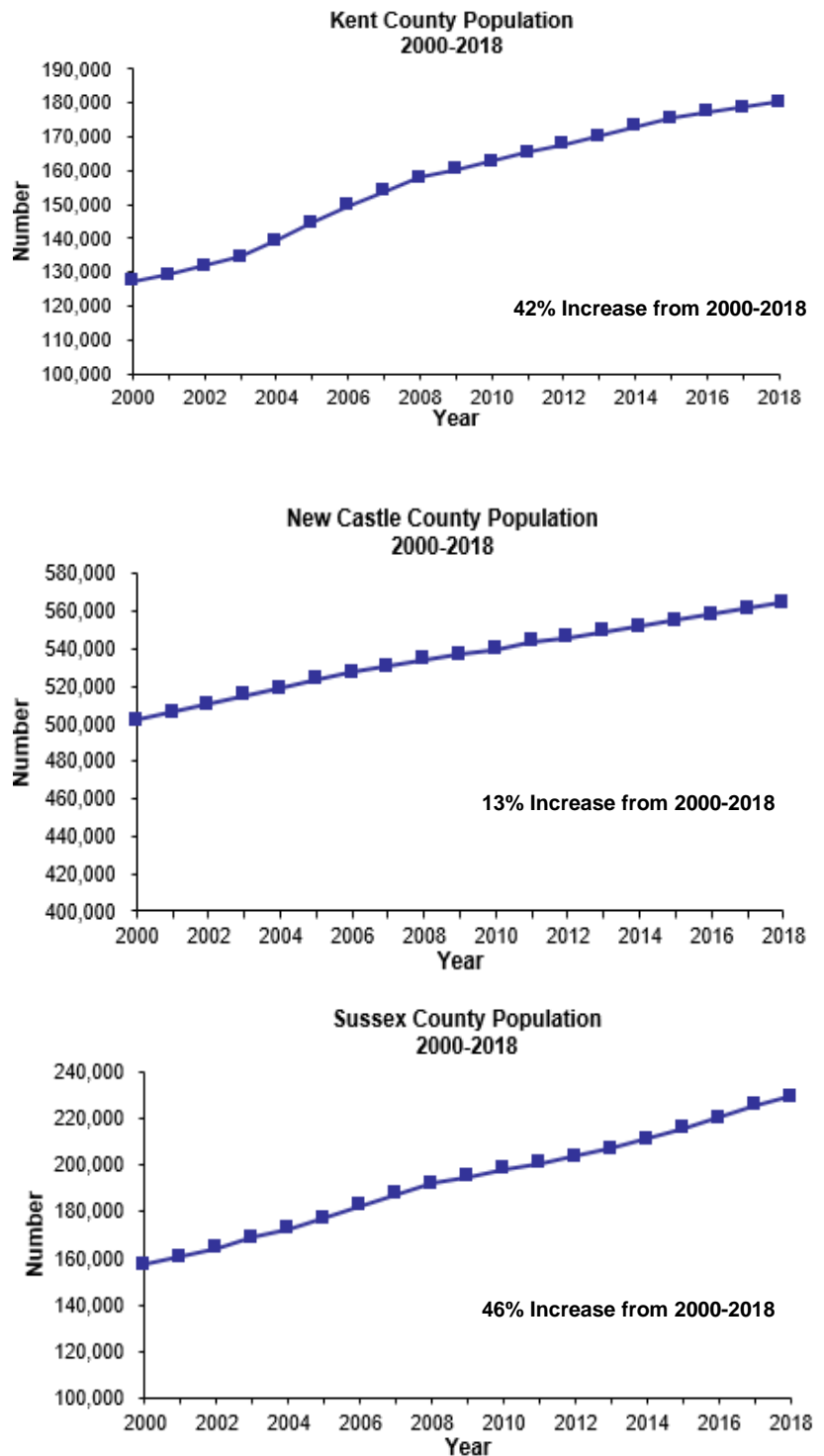
POPULATION

Delaware's three counties continued their increasing population trend, although they grew at different rates. Between 2000 and 2018, county populations grew annually by 2.3 percent for Kent, 0.7 percent for New Castle, and 2.5 percent for Sussex. Delaware's statewide increase was 1.3 percent.

In 2018, half of Delaware's 65 and older population resided in New Castle County. However, residents 65 and older represented a much larger proportion of the Sussex County population, where one in four residents was 65 or older, versus New Castle and Kent counties, where approximately one in six residents was 65 or older.

Over half of Delaware's total population resides in New Castle County, 58%.

Figure 5. Resident Population by County, Delaware, 2000-2018



Source: Delaware Department of Health and Social Services, Division of Public Health, Health Statistics Center

Figure 6. Percent of Population by County, Delaware, 2018

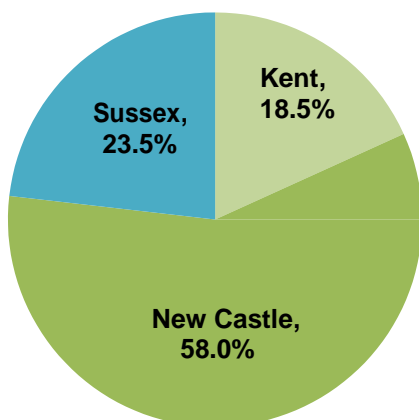


TABLE A-1. PERCENT CHANGE IN POPULATION BY SEX, COUNTY, CITY OF DOVER, CITY OF NEWARK, AND CITY OF WILMINGTON, DELAWARE, 1970-2020

Area/ Sex	1970	1980	% Change 1970-1980	1990	% Change 1980-1990	2000	% Change 1990-2000	2010	% Change 2000-2010	2020*	% Change 2010-2020	% Change 2000-2020
Delaware	548,104	594,338	8.4	666,168	12.1	786,393	18.0	900,429	14.5	989,803	9.9	25.9
Male	267,332	286,599	7.2	322,966	12.7	381,690	18.2	436,075	14.2	479,718	10.0	25.7
Female	280,772	307,739	9.6	343,202	11.5	404,703	17.9	464,354	14.7	510,085	9.8	26.0
Kent	81,892	98,219	19.9	110,993	13.0	127,230	14.6	162,847	28.0	183,242	12.5	44.0
Male	41,337	48,254	16.7	54,300	12.5	61,325	12.9	78,339	27.7	87,701	12.0	43.0
Female	40,555	49,965	23.2	56,693	13.5	65,905	16.2	84,508	28.2	95,541	13.1	45.0
Dover	17,488	23,512	34.4	27,630	17.5	32,135	16.3	36,047	12.2	38,304	6.3	19.2
Male	8,319	11,695	40.6	13,408	14.6	15,114	12.7	16,738	10.7	17,801	6.4	17.8
Female	9,169	11,817	28.9	14,222	20.4	17,021	19.7	19,309	13.4	20,502	6.2	20.5
New Castle	385,856	398,115	3.2	441,946	11.0	501,846	13.6	539,642	7.5	571,165	5.8	13.8
Male	187,124	191,176	2.2	213,869	11.9	243,587	13.9	261,055	7.2	277,440	6.3	13.9
Female	198,732	206,939	4.1	228,077	10.2	258,259	13.2	278,587	7.9	293,725	5.4	13.7
Newark	20,757	25,247	21.6	26,463	4.8	28,457	7.5	31,454	10.5	34,688	10.3	21.9
Male	10,242	11,993	17.1	12,408	3.5	13,085	5.5	14,682	12.2	16,234	10.6	24.1
Female	10,515	13,254	26.0	14,055	6.0	15,372	9.4	16,772	9.1	18,454	10.0	20.1
Wilmington	80,386	70,195	-12.7	71,529	1.9	72,730	1.7	70,922	-2.5	71,397	0.7	-1.8
Male	36,968	31,458	-14.9	33,249	5.7	34,759	4.5	33,720	-3.0	34,004	0.8	-2.2
Female	43,418	38,737	-10.8	38,280	-1.2	37,971	-0.8	37,202	-2.0	37,393	0.5	-1.5
Sussex	80,356	98,004	22.0	113,229	15.5	157,317	38.9	197,940	25.8	235,396	18.9	49.6
Male	38,871	47,169	21.3	54,797	16.2	76,778	40.1	96,681	25.9	114,577	18.5	49.2
Female	41,485	50,835	22.5	58,432	14.9	80,539	37.8	101,259	25.7	120,819	19.3	50.0

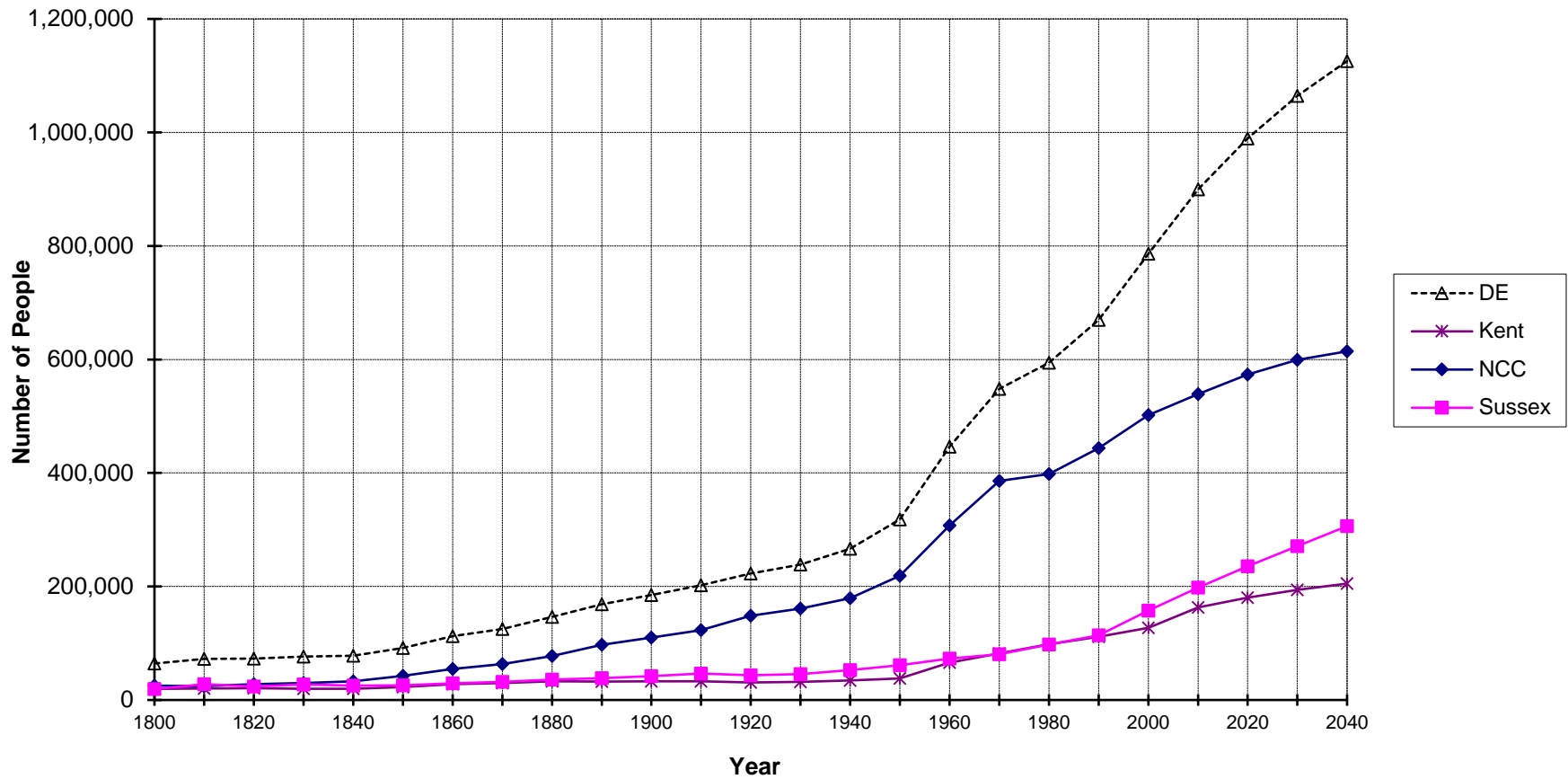
Note:

*Numbers for this year are projections.

Sources:

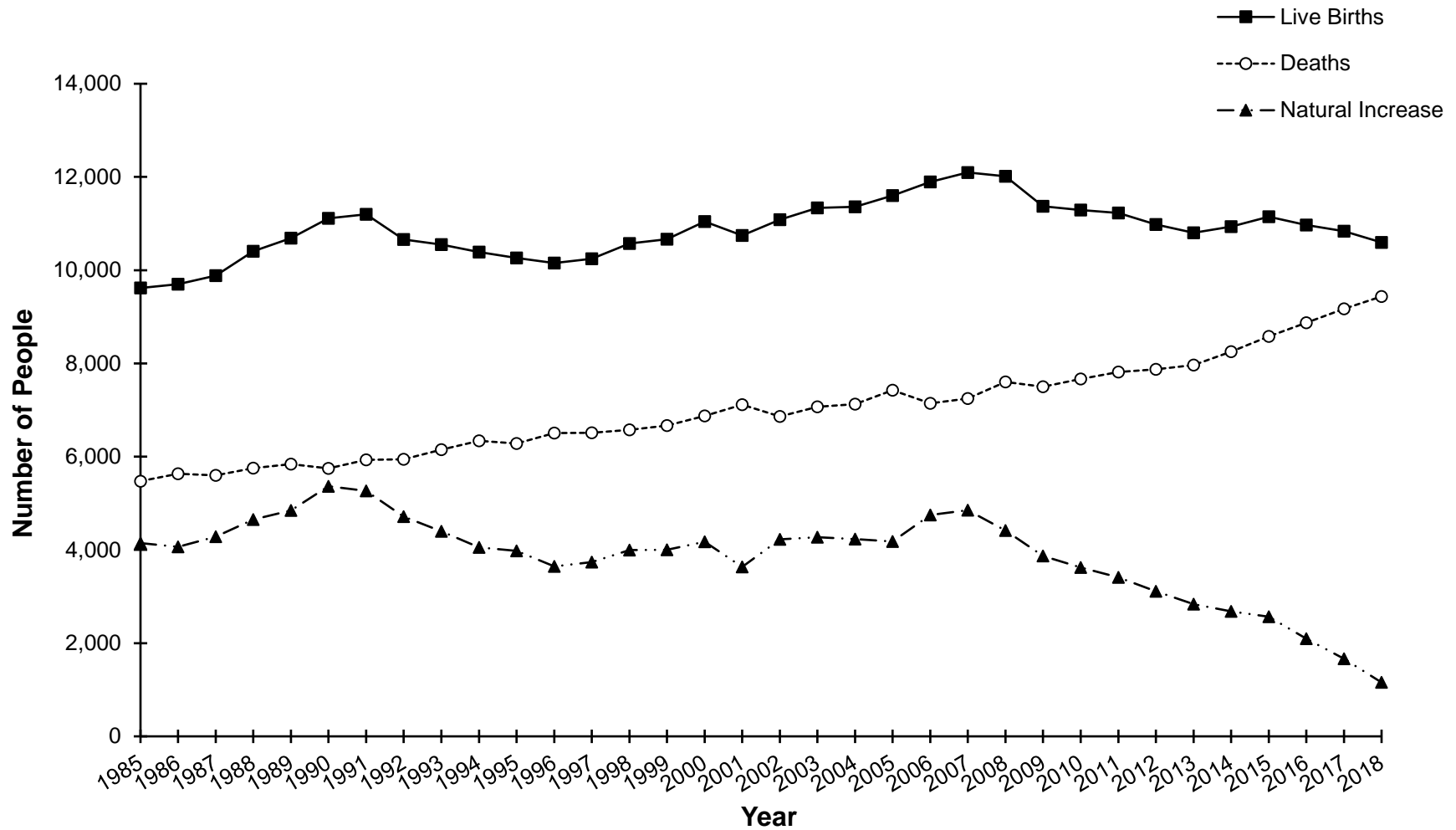
Delaware Department of Health and Social Services, Division of Public Health, Delaware Health Statistics Center,
 Delaware Population Consortium
 U.S. Bureau of the Census

Figure A-1. Population Growth, Delaware and Counties, 1800-2040



Sources: Delaware Department of Health and Social Services, Division of Public Health, Delaware Health Statistics Center
 Delaware Population Consortium

Figure A-2. Live Births, Deaths, and Natural Increase, Delaware, 1985-2018



Source: Delaware Department of Health and Social Services, Division of Public Health, Delaware Health Statistics Center

TABLE A-2. POPULATION ESTIMATES BY SEX, RACE AND AGE, COUNTY, CITY OF DOVER, CITY OF NEWARK, AND CITY OF WILMINGTON, DELAWARE, 2018

Area/ Sex/Race	Age																		
	Total	0-4	5-9	10-14	15-19	20-24	25-29	30-34	35-39	40-44	45-49	50-54	55-59	60-64	65-69	70-74	75-79	80-84	85+
Delaware	974,051	55,912	58,025	59,451	59,307	60,109	70,470	61,586	60,312	53,153	60,143	66,876	69,599	64,174	56,712	44,973	30,978	20,464	21,807
Male	472,135	28,240	29,459	30,208	30,286	30,625	35,001	31,330	29,720	25,775	28,955	32,319	33,293	30,278	26,221	20,506	13,618	8,636	7,665
Non-Hispanic White	294,096	15,433	14,741	14,849	15,717	16,678	19,917	18,038	17,044	14,651	17,763	21,529	23,734	22,587	20,350	16,611	10,991	7,021	6,442
Non-Hispanic Black	99,383	7,323	7,428	7,133	7,652	8,022	8,759	6,757	6,145	5,336	6,261	6,735	6,288	5,135	4,090	2,710	1,748	1,063	798
Female	501,916	27,672	28,566	29,243	29,243	29,021	29,484	35,469	30,256	30,592	27,378	31,188	34,557	36,306	33,896	30,491	24,467	17,360	11,828
Non-Hispanic White	313,813	15,132	14,189	14,153	14,842	16,029	20,796	17,375	17,414	15,564	18,814	22,294	25,387	24,686	23,012	19,242	13,715	9,538	11,631
Non-Hispanic Black	110,491	7,201	7,217	6,900	7,466	7,801	8,633	7,010	7,053	6,330	7,536	8,140	7,645	6,500	5,394	3,722	2,492	1,607	1,844
Kent	180,396	11,506	11,666	12,055	12,228	11,637	14,228	11,814	10,885	9,673	10,921	12,078	11,934	10,597	9,254	7,656	5,403	3,568	3,293
Male	86,379	5,755	5,858	6,100	6,232	5,958	7,061	5,876	5,148	4,430	5,176	5,732	5,696	4,879	4,236	3,426	2,272	1,427	1,117
Non-Hispanic White	55,243	3,548	3,318	3,377	3,506	3,427	3,735	3,676	3,396	2,865	3,439	3,939	4,051	3,500	3,099	2,665	1,737	1,088	877
Non-Hispanic Black	20,069	1,482	1,480	1,478	1,589	1,551	2,372	1,321	1,008	922	1,166	1,258	1,188	990	845	598	390	253	178
Female	94,017	5,751	5,808	5,955	5,996	5,679	7,167	5,938	5,737	5,243	5,745	6,346	6,238	5,718	5,018	4,230	3,131	2,141	2,176
Non-Hispanic White	58,574	3,549	3,280	3,091	3,259	3,115	3,492	3,671	3,592	3,249	3,612	4,197	4,307	3,939	3,554	3,109	2,296	1,622	1,640
Non-Hispanic Black	22,586	1,488	1,423	1,483	1,515	1,553	2,675	1,405	1,293	1,174	1,376	1,468	1,342	1,263	1,047	794	560	361	366
New Castle	564,568	32,794	33,994	34,818	35,221	36,464	45,024	37,540	37,347	32,673	36,757	39,415	39,915	35,798	29,777	21,605	14,343	9,629	11,454
Male	274,207	16,590	17,296	17,716	17,996	18,713	22,125	19,181	18,433	16,062	17,687	19,096	19,071	16,951	13,709	9,655	6,163	3,924	3,839
Non-Hispanic White	157,419	8,468	8,047	8,031	8,650	9,425	12,525	10,470	9,708	8,380	9,963	11,689	12,663	11,844	9,843	7,149	4,556	2,933	3,075
Non-Hispanic Black	66,324	4,753	4,936	4,666	5,102	5,523	5,403	4,544	4,333	3,777	4,384	4,624	4,240	3,398	2,695	1,734	1,062	663	487
Female	290,361	16,204	16,698	17,102	17,225	17,751	22,899	18,359	18,914	16,611	19,070	20,319	20,844	18,847	16,068	11,950	8,180	5,705	7,615
Non-Hispanic White	167,673	8,269	7,693	7,763	8,230	9,064	13,755	9,812	9,927	8,534	10,456	11,982	13,474	12,680	11,137	8,593	5,952	4,270	6,082
Non-Hispanic Black	74,089	4,658	4,813	4,501	5,022	5,263	5,076	4,737	4,901	4,490	5,354	5,692	5,286	4,437	3,621	2,438	1,561	1,052	1,187
Wilmington*	71,086	5,021	5,003	4,545	4,372	4,139	4,576	5,421	5,993	4,501	4,416	4,503	4,641	4,154	3,362	2,397	1,632	1,096	1,314
Male	33,839	2,505	2,489	2,261	2,217	2,072	2,381	2,608	2,936	2,195	2,114	2,111	2,194	1,898	1,521	1,007	610	387	333
Non-Hispanic White	10,380	465	517	364	284	270	358	1,020	1,278	964	797	748	772	735	658	511	285	173	181
Non-Hispanic Black	19,874	1,663	1,607	1,552	1,625	1,565	1,758	1,312	1,316	1,007	1,123	1,187	1,285	1,054	768	444	286	192	130
Female	37,247	2,516	2,514	2,284	2,155	2,067	2,195	2,813	3,057	2,306	2,302	2,392	2,447	2,256	1,841	1,390	1,022	709	981
Non-Hispanic White	10,457	466	509	364	314	272	309	996	1,240	791	677	607	666	718	703	588	428	273	536
Non-Hispanic Black	23,235	1,683	1,647	1,585	1,541	1,559	1,661	1,536	1,520	1,274	1,435	1,599	1,641	1,405	1,056	739	544	397	413
Sussex	229,087	11,612	12,365	12,578	11,858	12,008	11,218	12,232	12,080	10,807	12,465	15,383	17,750	17,779	17,681	15,712	11,232	7,267	7,060
Male	111,549	5,895	6,305	6,392	6,058	5,954	5,815	6,273	6,139	5,283	6,092	7,491	8,526	8,448	8,276	8,047	8,031	8,650	9,425
Non-Hispanic White	81,434	3,417	3,376	3,441	3,561	3,826	3,657	3,892	3,940	3,406	4,361	5,901	7,020	7,243	7,408	6,797	4,698	3,000	2,490
Non-Hispanic Black	12,990	1,088	1,012	989	961	948	984	892	804	637	711	853	860	747	550	378	296	147	133
Female	117,538	5,717	6,060	6,186	5,800	6,054	5,403	5,959	5,941	5,524	6,373	7,892	9,224	9,331	9,405	8,287	6,049	3,982	4,351
Non-Hispanic White	87,566	3,314	3,216	3,299	3,353	3,850	3,549	3,892	3,895	3,781	4,746	6,115	7,606	8,067	8,321	7,540	5,467	3,646	3,909
Non-Hispanic Black	13,816	1,055	981	916	929	985	882	868	859	666	806	980	1,017	800	726	490	371	194	291

Sources:

Delaware Department of Health and Social Services, Division of Public Health, Delaware Health Statistics Center
 Delaware Population Consortium