

DELAWARE VITAL STATISTICS ANNUAL REPORT POPULATION, 2017

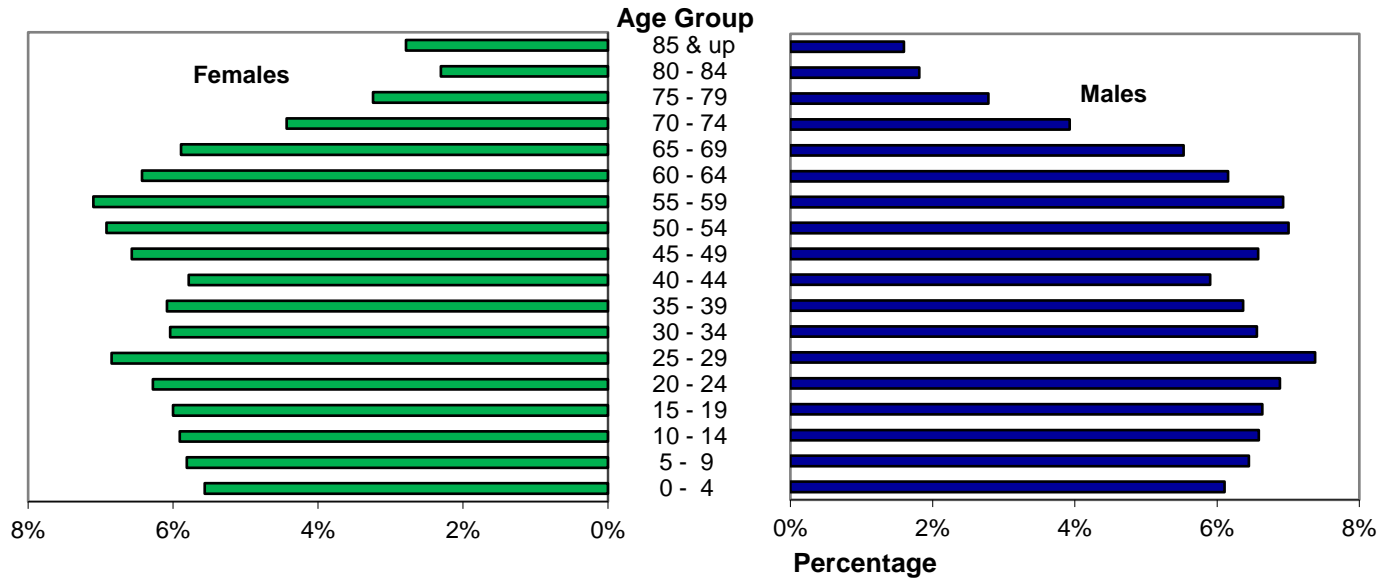


Suggested Citation:

Delaware Health Statistics Center. *Delaware Vital Statistics Annual Report, 2017.*
Delaware Department of Health and Social Services, Division of Public Health: 2019.

In 2017, nearly 52 percent of Delaware’s population was female. Females made up a greater proportion of the older age groups, which reflects the longer female life expectancy. Delaware females born in 2017 can expect to live an average of 81.4 years versus males who can expect to live 75.5 years.

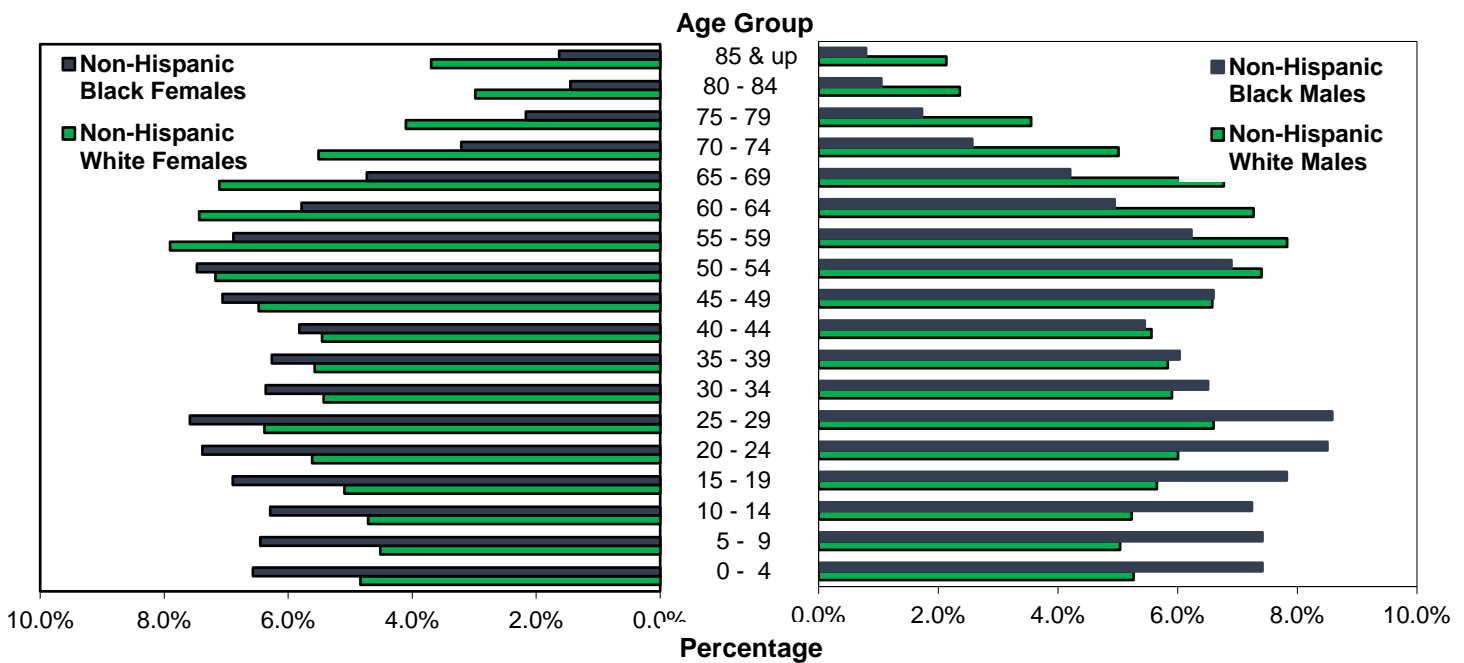
Figure 3. Population by Gender, Delaware, 2017



Source: Delaware Department of Health and Social Services, Division of Public Health, Delaware Health Statistics Center

When the population was broken down by race, the highest proportion of females in the older age groups appeared in the non-Hispanic white population. However, both non-Hispanic black males and females had a greater percentage of their population in the 0-39 year age range than non-Hispanic white males and females. In the 55 and above age range for both males and females, whites made up a greater proportion of the population.

Figure 4. Population by Gender and Race, Delaware, 2017



Source: Delaware Department of Health and Social Services, Division of Public Health, Delaware Health Statistics Center

POPULATION

Delaware's three counties continued their increasing population trend, although they grew at different rates. Between 2000 and 2017, county populations grew annually by 2.5 percent for Kent, 0.7 percent for New Castle, and 2.5 percent for Sussex. Delaware's statewide increase was 1.4 percent.

In 2017, just over half of Delaware's 65 and older population resided in New Castle County. However, residents 65 and older represented a much larger proportion of the Sussex County population, where one in four residents was 65 or older, versus New Castle and Kent counties, where approximately one in seven residents was 65 or older.

Over half of Delaware's total population resides in New Castle County.

Figure 6. Percent of Population by County, Delaware, 2017

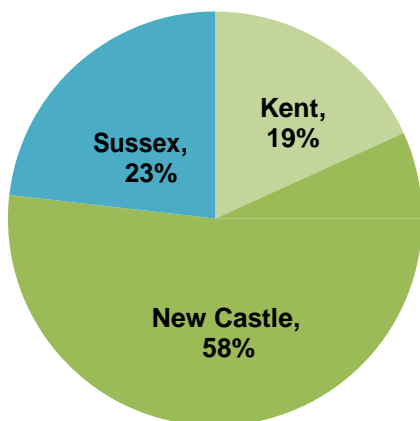
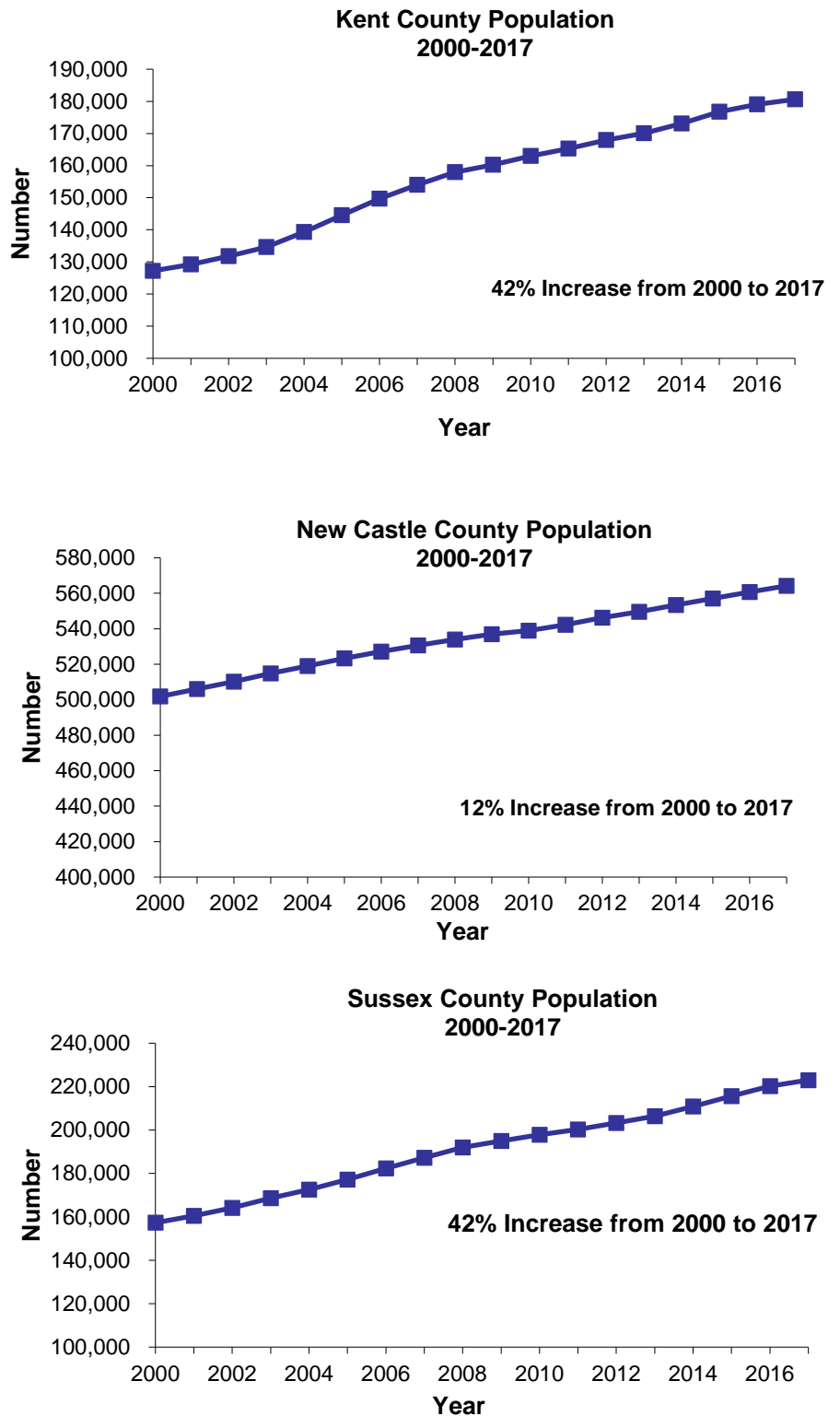


Figure 5. Resident Population by County, Delaware, 2000-2017



Source: Delaware Department of Health and Social Services, Division of Public Health, Health Statistics Center

Source: Delaware Department of Health and Social Services, Division of Public Health, Health Statistics Center

TABLE A-1. PERCENT CHANGE IN POPULATION BY SEX, COUNTY, CITY OF DOVER, CITY OF NEWARK, AND CITY OF WILMINGTON, DELAWARE, 1970-2020

Area/ Sex	1970	1980	% Change 1970-1980	1990	% Change 1980-1990	2000	% Change 1990-2000	2010	% Change 2000-2010	2020*	% Change 2010-2020	% Change 2000-2020
Delaware	548,104	594,338	8.4	666,168	12.1	786,393	18.0	899,778	14.4	989,665	10.0	25.8
Male	267,332	286,599	7.2	322,966	12.7	381,690	18.2	435,775	14.2	479,759	10.1	25.7
Female	280,772	307,739	9.6	343,202	11.5	404,703	17.9	464,003	14.7	509,906	9.9	26.0
Kent	81,892	98,219	19.9	110,993	13.0	127,230	14.6	162,978	28.1	184,920	13.5	45.3
Male	41,337	48,254	16.7	54,300	12.5	61,325	12.9	78,407	27.9	88,513	12.9	44.3
Female	40,555	49,965	23.2	56,693	13.5	65,905	16.2	84,571	28.3	96,407	14.0	46.3
Dover	17,488	23,512	34.4	27,630	17.5	32,135	16.3	36,050	12.2	39,069	8.4	21.6
Male	8,319	11,695	40.6	13,408	14.6	15,114	12.7	16,739	10.8	18,157	8.5	20.1
Female	9,169	11,817	28.9	14,222	20.4	17,021	19.7	19,311	13.5	20,912	8.3	22.9
New Castle	385,856	398,115	3.2	441,946	11.0	501,846	13.6	538,912	7.4	574,407	6.6	14.5
Male	187,124	191,176	2.2	213,869	11.9	243,587	13.9	260,704	7.0	279,153	7.1	14.6
Female	198,732	206,939	4.1	228,077	10.2	258,259	13.2	278,208	7.7	295,254	6.1	14.3
Newark	20,757	25,247	21.6	26,463	4.8	28,457	7.5	31,522	10.8	32,881	4.3	15.5
Male	10,242	11,993	17.1	12,408	3.5	13,085	5.5	14,714	12.4	15,388	4.6	17.6
Female	10,515	13,254	26.0	14,055	6.0	15,372	9.4	16,808	9.3	17,493	4.1	13.8
Wilmington	80,386	70,195	-12.7	71,529	1.9	72,730	1.7	71,613	-1.5	74,434	3.9	2.3
Male	36,968	31,458	-14.9	33,249	5.7	34,759	4.5	34,034	-2.1	35,591	4.6	2.4
Female	43,418	38,737	-10.8	38,280	-1.2	37,971	-0.8	37,579	-1.0	38,843	3.4	2.3
Sussex	80,356	98,004	22.0	113,229	15.5	157,317	38.9	197,888	25.8	230,338	16.4	46.4
Male	38,871	47,169	21.3	54,797	16.2	76,778	40.1	96,664	25.9	112,093	16.0	46.0
Female	41,485	50,835	22.5	58,432	14.9	80,539	37.8	101,224	25.7	118,245	16.8	46.8

Note:

*Numbers for this year are projections.

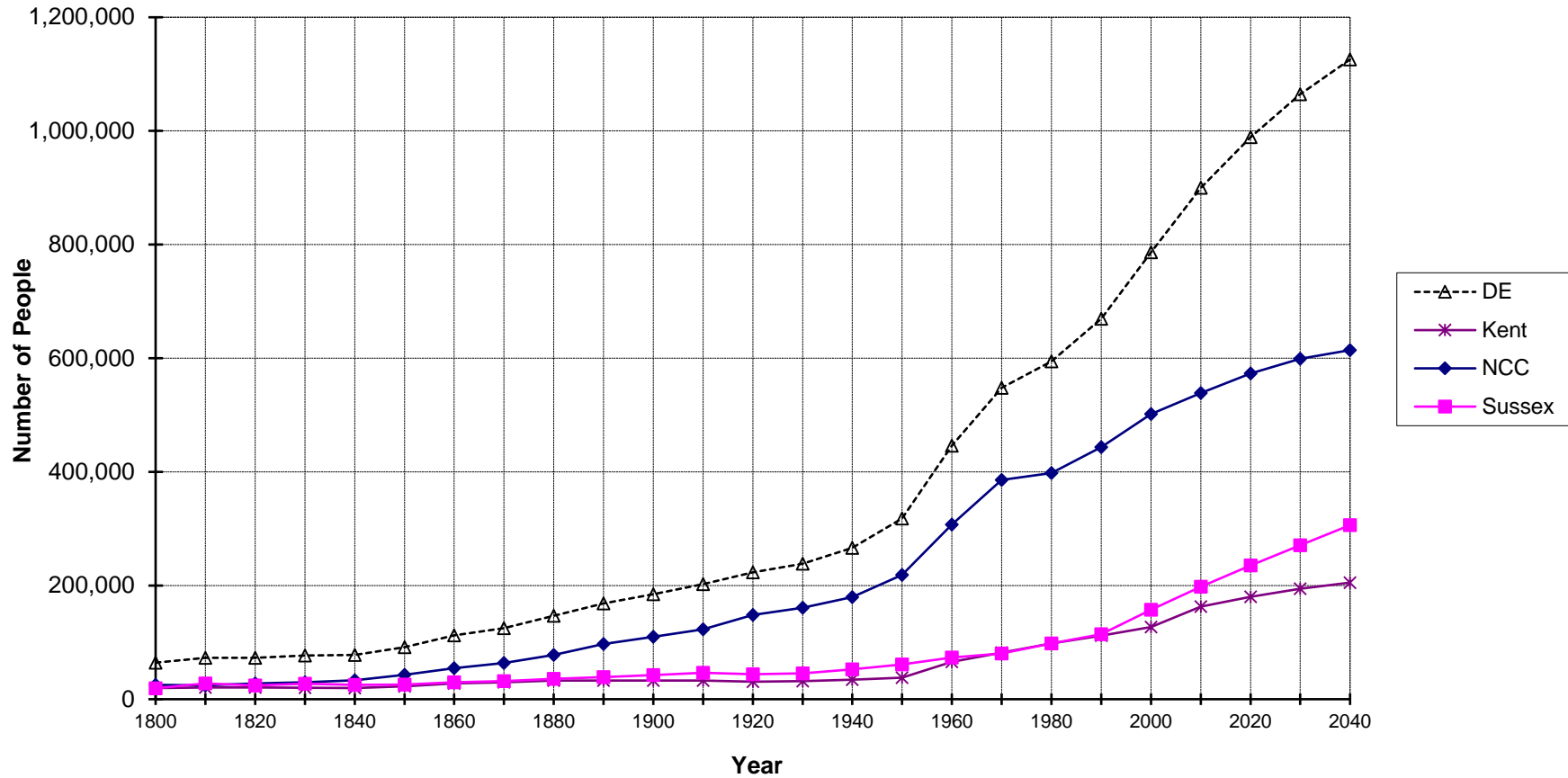
Sources:

Delaware Department of Health and Social Services, Division of Public Healths, Delaware Health Statistics Center

Delaware Population Consortium

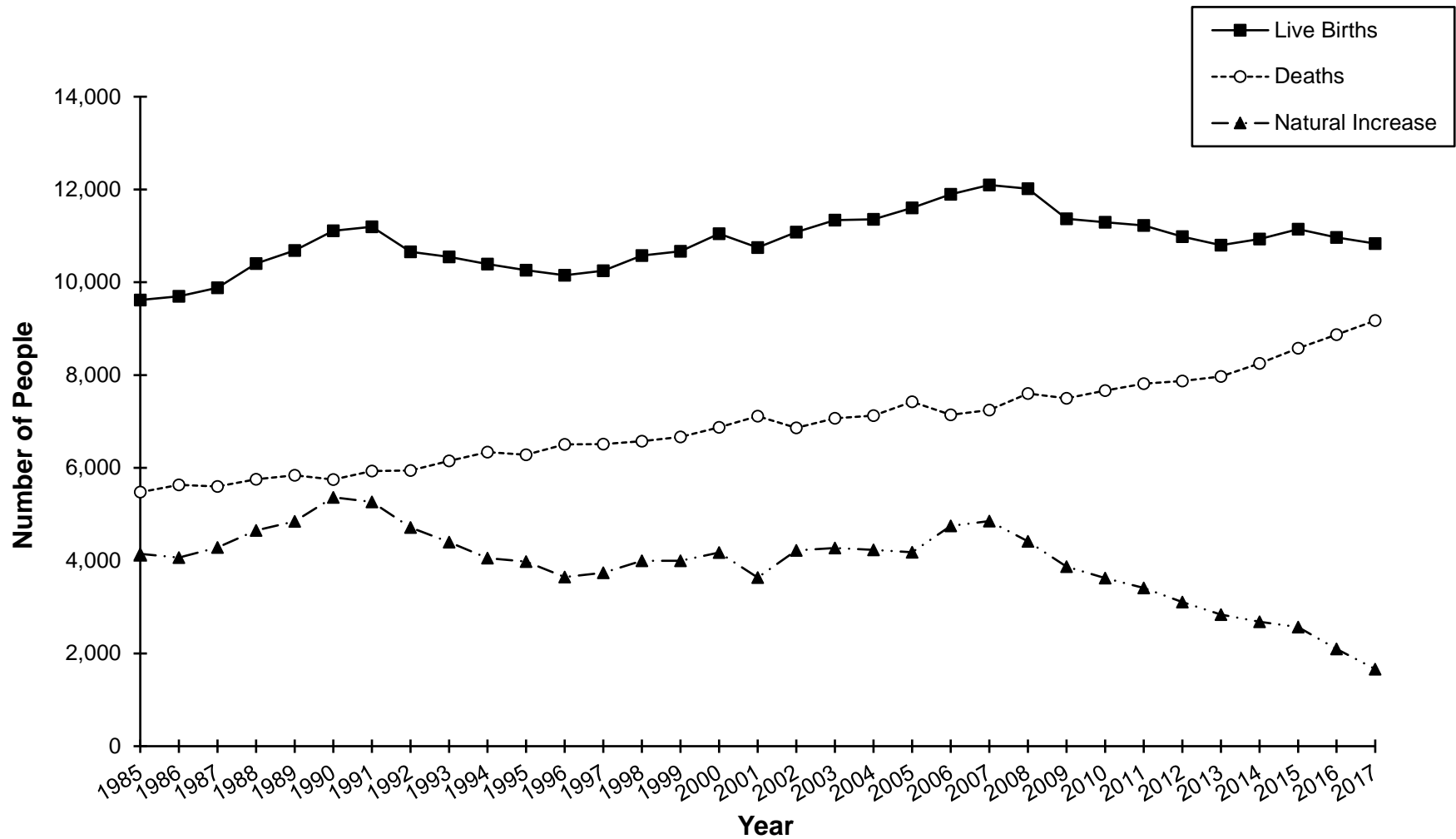
U.S. Bureau of the Census

Figure A-1. Population Growth, Delaware and Counties, 1800-2040



Sources: Delaware Department of Health and Social Services, Division of Public Health, Delaware Health Statistics Center
 Delaware Population Consortium

Figure A-2. Live Births, Deaths, and Natural Increase, Delaware, 1985-2017



Source: Delaware Department of Health and Social Services, Division of Public Health, Delaware Health Statistics Center

TABLE A-2. POPULATION ESTIMATES BY SEX, RACE AND AGE, COUNTY, CITY OF DOVER, CITY OF NEWARK, AND CITY OF WILMINGTON, DELAWARE, 2017

Area/ Sex/Race	Age																		
	Total	0-4	5-9	10-14	15-19	20-24	25-29	30-34	35-39	40-44	45-49	50-54	55-59	60-64	65-69	70-74	75-79	80-84	85+
Delaware	967,813	56,057	58,878	59,989	60,688	63,234	68,379	60,536	59,861	56,227	63,254	66,980	67,534	60,592	55,015	40,326	29,074	19,900	21,289
Male	469,127	28,307	29,890	30,531	30,770	31,914	34,216	30,407	29,526	27,376	30,499	32,486	32,117	28,527	25,637	18,214	12,908	8,411	7,391
Non-Hispanic White	290,299	15,280	14,624	15,181	16,410	17,445	19,156	17,148	16,934	16,152	19,092	21,491	22,730	21,105	19,665	14,543	10,306	6,843	6,194
Non-Hispanic Black	100,417	7,449	7,449	7,274	7,856	8,538	8,621	6,534	6,059	5,471	6,629	6,926	6,260	4,969	4,221	2,578	1,734	1,053	796
Female	498,686	27,750	28,988	29,458	29,458	29,918	31,320	34,163	30,129	30,335	28,851	32,755	34,494	35,417	32,065	29,378	22,112	16,166	11,489
Non-Hispanic White	309,697	14,979	13,980	14,586	15,773	17,392	19,776	16,815	17,264	16,888	20,063	22,206	24,476	23,033	22,024	17,060	12,705	9,237	11,440
Non-Hispanic Black	111,720	7,340	7,207	7,030	7,700	8,248	8,473	7,107	6,996	6,502	7,889	8,347	7,688	6,461	5,284	3,586	2,419	1,620	1,823
Kent	180,610	11,428	12,485	13,192	13,725	13,450	13,657	10,859	11,446	12,794	13,034	11,689	10,609	8,689	7,215	5,744	4,621	3,167	2,806
Male	86,443	5,713	6,309	6,604	6,869	6,673	6,723	5,277	5,410	6,115	6,197	5,564	5,089	4,041	3,290	2,527	1,975	1,221	846
Non-Hispanic White	53,386	3,435	3,464	3,784	4,029	3,734	3,308	3,053	3,667	4,351	4,327	3,622	3,328	2,613	2,041	1,783	1,387	871	589
Non-Hispanic Black	22,059	1,580	1,657	1,575	1,786	1,982	2,425	1,371	995	1,118	1,317	1,406	1,325	1,050	965	609	423	282	193
Female	94,167	5,715	6,176	6,588	6,856	6,777	6,934	5,582	6,036	6,679	6,837	6,125	5,520	4,648	3,925	3,217	2,646	1,946	1,960
Non-Hispanic White	56,668	3,437	3,384	3,600	3,961	3,785	3,226	3,263	3,758	4,583	4,502	3,876	3,442	2,779	2,401	2,042	1,813	1,414	1,402
Non-Hispanic Black	24,854	1,594	1,540	1,665	1,697	1,979	2,738	1,469	1,426	1,306	1,579	1,609	1,502	1,397	1,124	842	599	393	395
Male	274,110	16,745	17,387	17,792	18,175	19,372	21,868	19,026	18,234	16,086	18,253	19,475	18,915	16,385	13,848	8,725	5,963	3,955	3,906
Non-Hispanic White	156,506	8,430	7,769	7,985	8,785	9,834	12,299	10,254	9,426	8,379	10,343	11,976	12,640	11,535	9,955	6,359	4,381	2,993	3,163
Non-Hispanic Black	65,295	4,796	4,769	4,684	5,106	5,570	5,208	4,309	4,254	3,720	4,548	4,635	4,099	3,166	2,697	1,599	1,034	631	470
Female	290,083	16,355	16,855	17,007	17,434	18,745	21,973	18,706	18,686	16,760	19,551	20,616	20,823	18,411	15,918	11,083	7,794	5,669	7,697
Non-Hispanic White	166,612	8,228	7,418	7,694	8,382	9,770	13,070	9,722	9,719	8,500	10,804	12,229	13,503	12,435	11,067	7,938	5,661	4,269	6,203
Non-Hispanic Black	72,959	4,702	4,656	4,442	5,037	5,289	4,849	4,754	4,757	4,516	5,424	5,761	5,149	4,250	3,476	2,247	1,485	1,022	1,143
Male	35,289	2,716	2,629	2,438	2,267	2,214	2,455	2,918	3,029	2,228	2,172	2,283	2,190	1,920	1,515	968	593	389	365
Non-Hispanic White	10,527	493	500	352	279	272	410	1,211	1,247	908	789	773	759	759	657	487	270	166	195
Non-Hispanic Black	19,033	1,606	1,553	1,511	1,527	1,564	1,621	1,221	1,266	972	1,072	1,217	1,228	974	723	399	261	189	129
Female	38,592	2,726	2,636	2,384	2,259	2,212	2,285	3,062	3,132	2,336	2,427	2,475	2,503	2,238	1,813	1,366	991	727	1,020
Non-Hispanic White	10,619	495	484	353	313	262	384	1,143	1,166	762	664	624	683	759	697	573	401	285	571
Non-Hispanic Black	22,273	1,628	1,581	1,504	1,478	1,566	1,538	1,456	1,467	1,224	1,432	1,573	1,589	1,276	992	689	510	381	389
Sussex	223,010	11,529	12,151	11,998	11,354	11,667	10,881	11,945	11,495	10,587	12,416	15,200	17,187	17,107	18,034	14,774	10,696	7,109	6,880
Male	108,574	5,849	6,194	6,135	5,726	5,869	5,625	6,104	5,882	5,175	6,049	7,447	8,113	8,101	8,499	7,769	7,985	8,785	9,834
Non-Hispanic White	80,407	3,415	3,391	3,412	3,596	3,877	3,549	3,841	3,841	3,422	4,422	5,893	6,762	6,957	7,669	6,401	4,538	2,979	2,442
Non-Hispanic Black	13,063	1,073	1,023	1,015	964	986	988	854	810	633	764	885	836	753	559	370	277	140	133
Female	114,436	5,680	5,957	5,863	5,628	5,798	5,256	5,841	5,613	5,412	6,367	7,753	9,074	9,006	9,535	7,812	5,726	3,874	4,241
Non-Hispanic White	86,417	3,314	3,178	3,292	3,430	3,837	3,480	3,830	3,787	3,805	4,757	6,101	7,531	7,819	8,556	7,080	5,231	3,554	3,835
Non-Hispanic Black	13,907	1,044	1,011	923	966	980	886	884	813	680	886	977	1,037	814	684	497	335	205	285

Sources: Delaware Department of Health and Social Services, Division of Public Health, Delaware Health Statistics Center
Delaware Population Consortium