

# DELAWARE VITAL STATISTICS ANNUAL REPORT POPULATION, 2014



*Suggested Citation:*

Delaware Health Statistics Center. *Delaware Vital Statistics Annual Report, 2014.*

Delaware Health and Social Services, Division of Public Health: 2017.

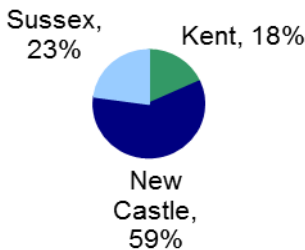
## POPULATION

Delaware's three counties continued their increasing population trend, though they grew at different rates. Between 2000 and 2014, county populations grew annually by 2.4 percent for Kent, 0.7 percent for New Castle, and 2.5 percent for Sussex. Delaware's statewide increase was 1.3 percent.

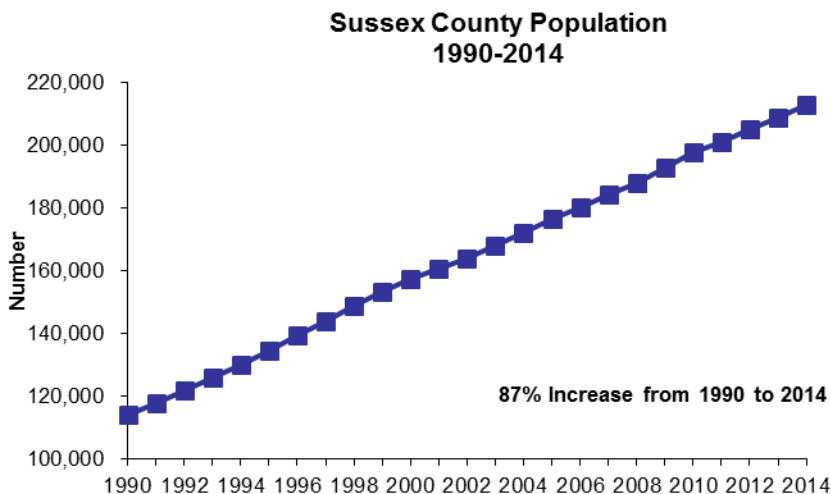
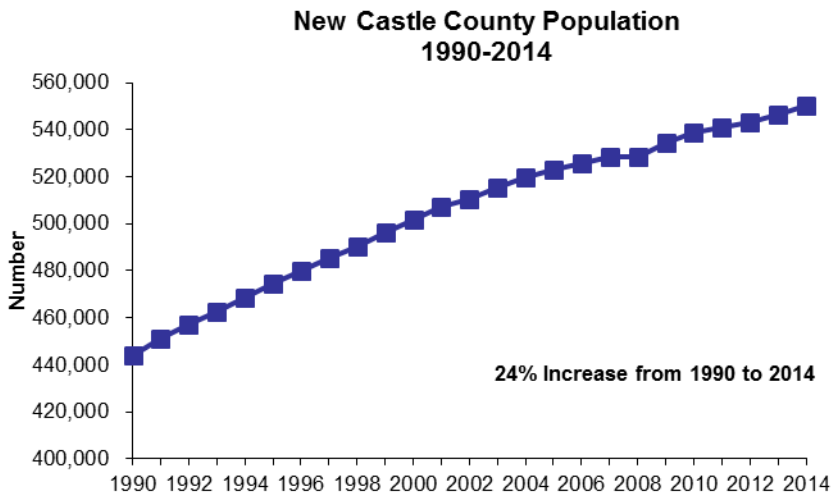
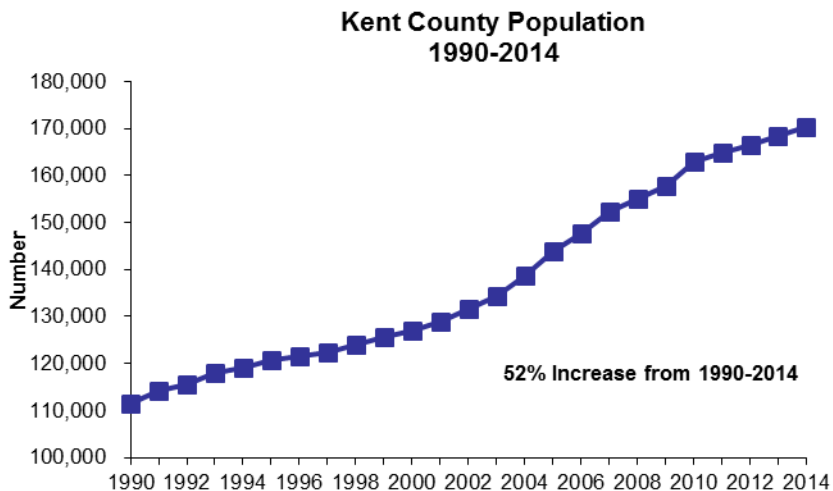
In 2014, just over half of Delaware's 65 and older population resided in New Castle County. However, residents 65 and older represented a much larger proportion of the Sussex County population, where 1 in 4 residents was 65 or older, versus New Castle and Kent counties, where approximately 1 in 7 residents was 65 or older.

Over half of Delaware's total population resides in New Castle County.

**Percent of Population by County  
Delaware, 2014**



**Delaware Resident Population by County, 1990-2014**

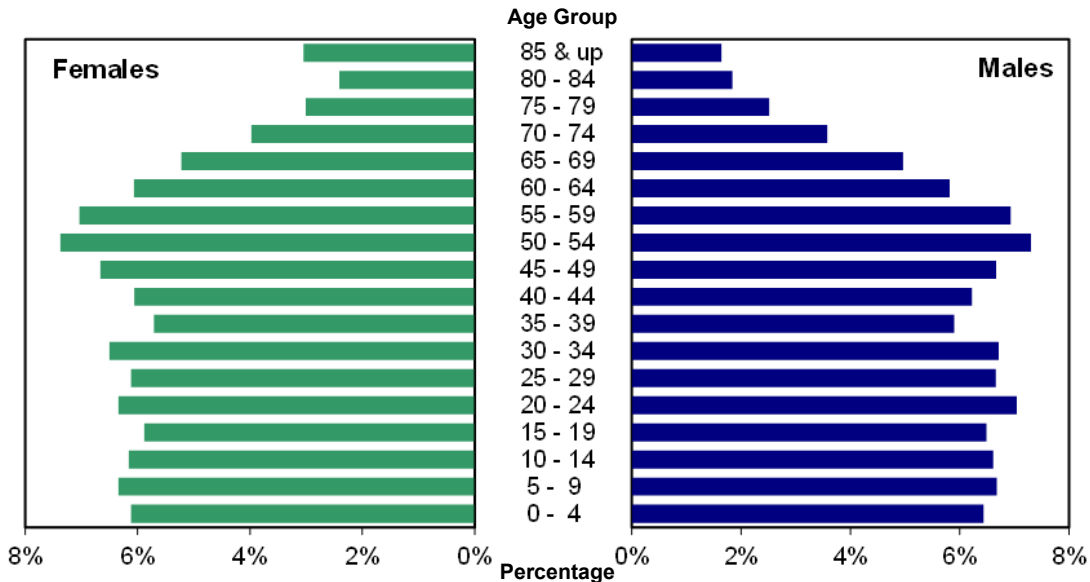


Source: Delaware Health and Social Services, Division of Public Health, Delaware Health Statistics Center

## POPULATION

In 2014, just over 51 percent of Delaware's population was female. Females made up a greater proportion of the older age groups, which reflects the longer female life expectancy. In 2014, Delaware females could expect to live an average of 82.1 years versus males who could expect to live 76.9 years.

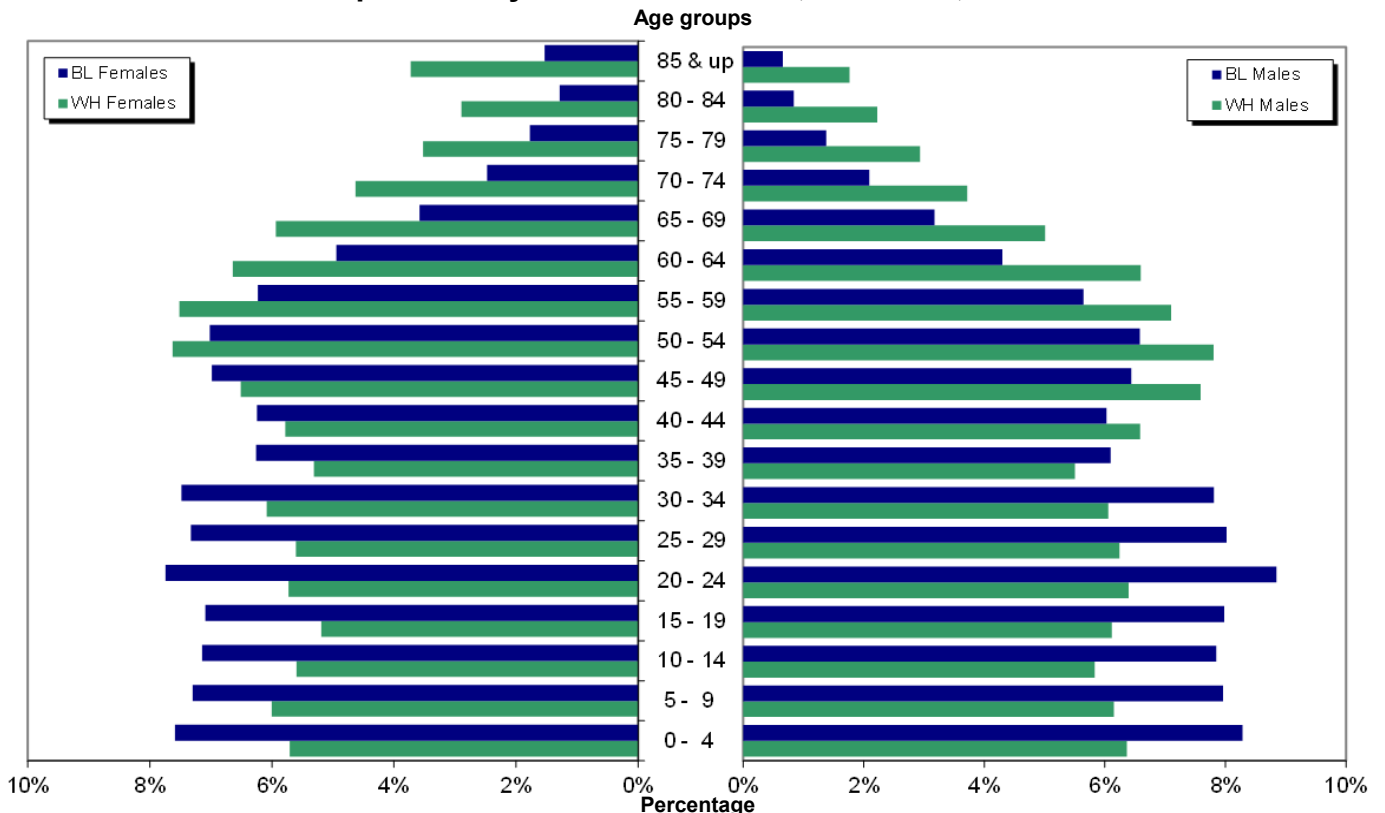
### Population by Gender and Age, Delaware, 2014



Source: Delaware Health and Social Services, Division of Public Health, Delaware Health Statistics Center

When the population was broken down by race, the higher proportion of females in the older age groups appeared in the black population. However, both black males and females had a greater percentage of their population in the 0-39 year age range than white males and females. In the 45 and above age range, whites made up a greater proportion of the population.

### Population by Gender and Race, Delaware, 2014



Source: Delaware Health and Social Services, Division of Public Health, Delaware Health Statistics Center

TABLE A-1  
PERCENT CHANGE IN POPULATION BY SEX

DELAWARE, COUNTIES, CITY OF DOVER, CITY OF NEWARK, AND CITY OF WILMINGTON, 1970-2020

Area/ Sex	1970	1980	% Change 1970-1980	1990	% Change 1980-1990	2000	% Change 1990-2000	2010	% Change 2000-2010	2020*	% Change 2010-2020	% Change 2000-2020
<b>Delaware</b>	548104	594338	8.4	666168	12.1	786393	18.0	899773	14.4	989170	9.9	25.8
Male	267332	286599	7.2	322966	12.7	381690	18.2	437346	14.6	481410	10.1	26.1
Female	280772	307739	9.6	343202	11.5	404703	17.9	462427	14.3	507760	9.8	25.5
<b>Kent</b>	81892	98219	19.9	110993	13.0	127230	14.6	162916	28.0	180357	10.7	41.8
Male	41337	48254	16.7	54300	12.5	61325	12.9	78394	27.8	86714	10.6	41.4
Female	40555	49965	23.2	56693	13.5	65905	16.2	84522	28.2	93643	10.8	42.1
Dover	17488	23512	34.4	27630	17.5	32135	16.3	36063	12.2	40475	12.2	26.0
Male	8319	11695	40.6	13408	14.6	15114	12.7	16798	11.1	18606	10.8	23.1
Female	9169	11817	28.9	14222	20.4	17021	19.7	19266	13.2	21869	13.5	28.5
<b>New Castle</b>	385856	398115	3.2	441946	11.0	501846	13.6	538987	7.4	573239	6.4	14.2
Male	187124	191176	2.2	213869	11.9	243587	13.9	262091	7.6	278844	6.4	14.5
Female	198732	206939	4.1	228077	10.2	258259	13.2	276896	7.2	294395	6.3	14.0
Newark	20757	25247	21.6	26463	4.8	28457	7.5	31465	10.6	34790	10.6	22.3
Male	10242	11993	17.1	12408	3.5	13085	5.5	14695	12.3	16251	10.6	24.2
Female	10515	13254	26.0	14055	6.0	15372	9.4	16770	9.1	18539	10.5	20.6
Wilmington	80386	70195	-12.7	71529	1.9	72730	1.7	70839	-2.6	69634	-1.7	-4.3
Male	36968	31458	-14.9	33249	5.7	34759	4.5	34568	-0.5	34461	-0.3	-0.9
Female	43418	38737	-10.8	38280	-1.2	37971	-0.8	36271	-4.5	35173	-3.0	-7.4
<b>Sussex</b>	80356	98004	22.0	113229	15.5	157317	38.9	197870	25.8	235574	19.1	49.7
Male	38871	47169	21.3	54797	16.2	76778	40.1	96861	26.2	115852	19.6	50.9
Female	41485	50835	22.5	58432	14.9	80539	37.8	101009	25.4	119722	18.5	48.7

Note:

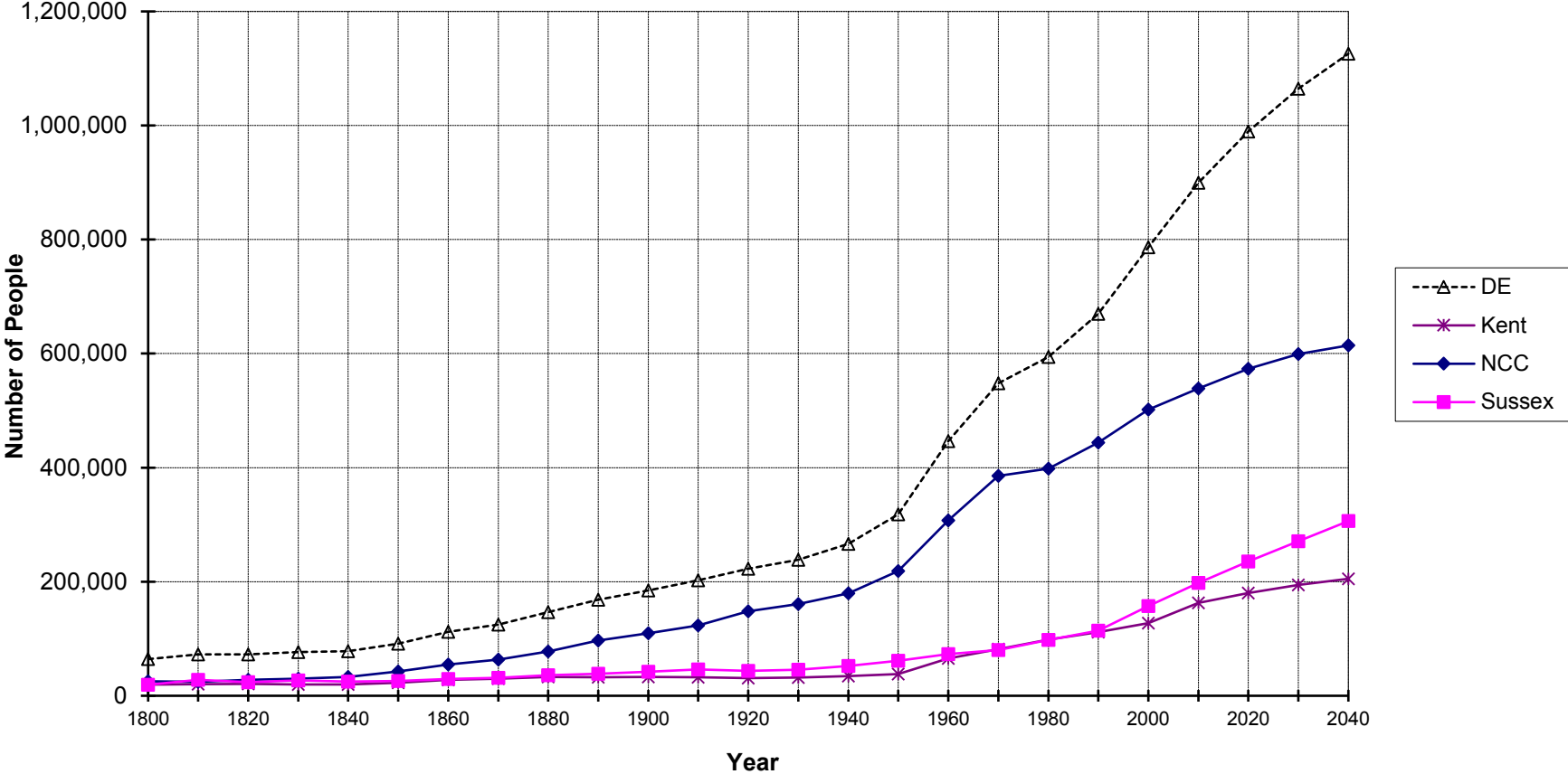
\*Numbers for this year are projections.

POPSEX

**Sources:**

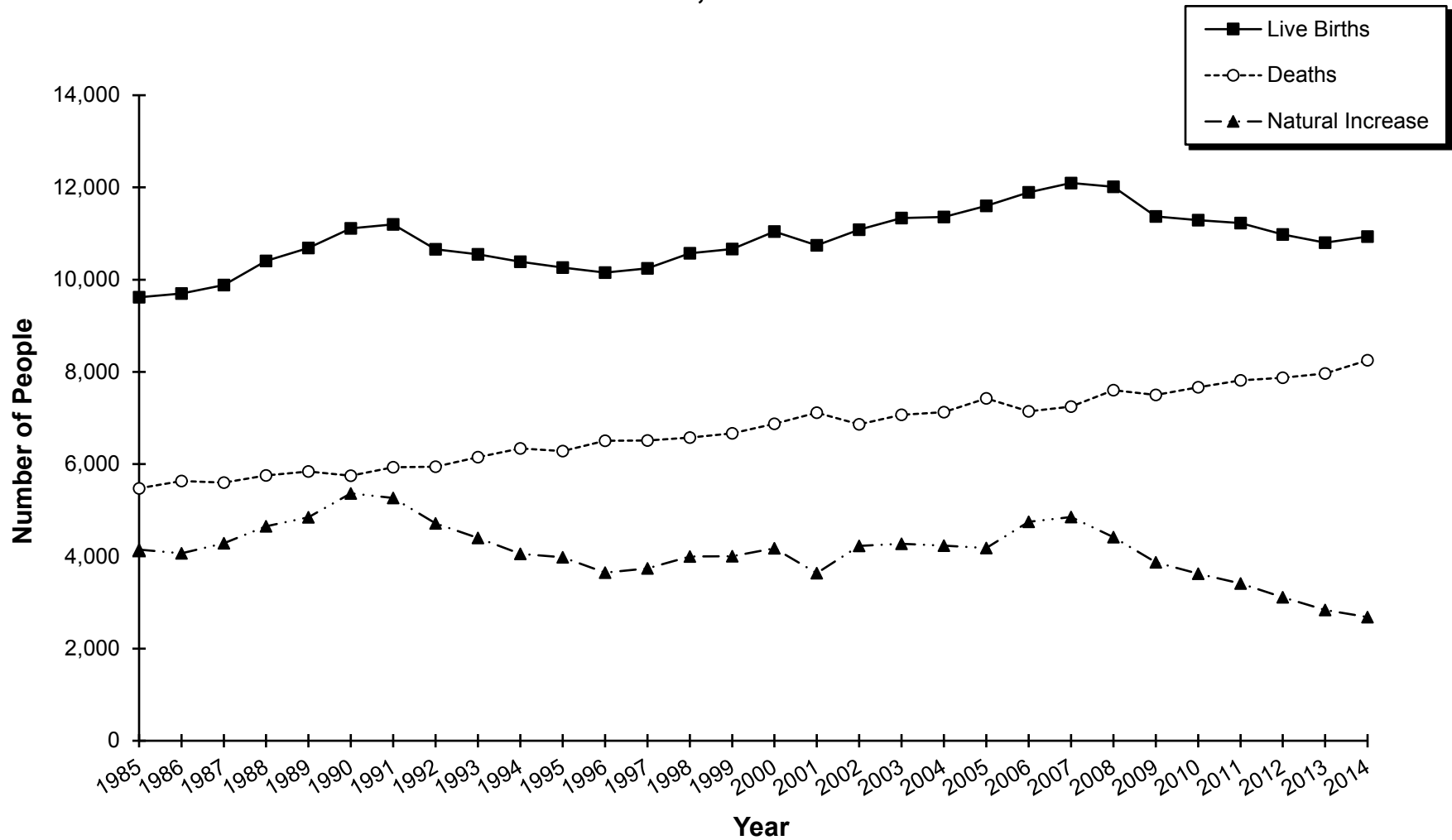
Delaware Health and Social Services, Division of Public Health, Delaware Health Statistics Center  
Delaware Population Consortium  
U.S. Bureau of the Census

**Figure A-1  
Population Growth  
Delaware and Counties, 1800-2040**



**Sources:**  
 Delaware Health and Social Services, Division of Public Health, Delaware Health Statistics Center  
 Delaware Population Consortium

**Figure A-2**  
**Live Births, Deaths, and Natural Increase**  
**Delaware, 1985-2014**



Source: Delaware Health and Social Services, Division of Public Health, Delaware Health Statistics Center

TABLE A-2  
POPULATION ESTIMATES BY SEX, RACE AND AGE

DELAWARE, COUNTIES, CITY OF DOVER, CITY OF NEWARK, AND CITY OF WILMINGTON, 2014

Area/ Sex/Race	Age																		
	Total	0-4	5-9	10-14	15-19	20-24	25-29	30-34	35-39	40-44	45-49	50-54	55-59	60-64	65-69	70-74	75-79	80-84	85+
<b>Delaware</b>	933141	58519	60696	59526	57640	62356	59540	61631	54122	57275	62177	68480	65155	55487	47530	35270	25800	19904	22033
Male	453846	29213	30315	30012	29450	31965	30223	30469	26772	28234	30240	33146	31447	26408	22520	16226	11408	8358	7440
White	321259	19304	20311	19178	18366	20134	19831	19962	17625	19105	21502	24686	24460	21153	18556	13638	9588	7284	6576
Black	99046	8206	7884	7775	7905	8762	7944	7735	6038	5973	6380	6518	5595	4259	3147	2072	1365	834	654
Female	479295	29306	30381	29514	28190	30391	29317	31162	27350	29041	31937	35334	33708	29079	25010	19044	14392	11546	14593
White	338783	19337	20341	18960	17578	19395	18990	20607	18001	19577	22055	25843	25457	22490	20110	15679	11940	9798	12625
Black	109026	8273	7957	7786	7732	8441	7990	8158	6826	6810	7614	7650	6790	5391	3905	2696	1934	1402	1671
<b>Kent</b>	170178	11499	11562	11518	11335	12147	12268	12191	10235	10113	11214	12639	11258	8853	7615	5563	4199	3126	2843
Male	81870	5741	5771	5775	5759	6240	6095	5936	4956	4755	5392	6088	5297	4128	3522	2495	1773	1282	865
White	56804	3926	3929	3874	3751	4046	4067	3631	3236	3326	3884	4438	3973	3091	2681	1939	1355	989	668
Black	20164	1621	1603	1595	1565	1811	1670	1934	1303	1055	1118	1215	1029	846	658	457	312	224	148
Female	88308	5758	5791	5743	5576	5907	6173	6255	5279	5358	5822	6551	5961	4725	4093	3068	2426	1844	1978
White	60244	3928	3930	3837	3583	3886	4126	3693	3205	3641	4039	4647	4213	3383	3014	2329	1846	1403	1541
Black	22430	1636	1622	1605	1578	1628	1680	2213	1647	1264	1340	1463	1335	1035	801	546	409	301	327
<b>New Castle</b>	550044	34419	36555	36131	35684	38646	35616	38483	34444	36326	38527	40366	37465	30802	25348	17905	12501	9508	11318
Male	267564	17167	18236	18195	18240	19757	18241	18879	16994	18000	18730	19613	18189	14463	11852	8123	5453	3795	3637
White	179219	10406	11533	11209	10859	11891	11403	12222	10945	11643	12685	13953	13404	10908	9194	6404	4288	3163	3109
Black	66016	5444	5173	5184	5273	5819	5154	4817	4012	4226	4455	4443	3870	2893	2131	1365	875	490	392
Female	282480	17252	18319	17936	18889	18889	17375	19604	17450	18326	19797	20753	19276	16339	13496	9782	7048	5713	7681
White	188799	10447	11589	11102	10360	11456	10565	12985	11342	11653	12832	14355	13758	11900	10214	7609	5498	4672	6462
Black	72752	5494	5222	5181	5172	5712	5188	4940	4439	4854	5397	5232	4622	3678	2639	1786	1258	874	1064
Wilmington*	70358	5589	5114	4699	4232	5398	5608	5514	4834	4760	4433	4417	4198	3508	2769	1914	1317	965	1089
Male	34563	2852	2627	2427	2194	2744	2811	2899	2468	2485	2244	2198	2025	1599	1192	753	480	303	262
White	12301	791	753	682	481	760	1115	1154	1032	1056	802	759	792	644	558	368	220	166	168
Black	19380	1804	1654	1543	1491	1671	1417	1412	1193	1220	1283	1311	1149	862	567	352	235	128	88
Female	35795	2737	2487	2272	2038	2654	2797	2615	2366	2275	2189	2219	2173	1909	1577	1161	837	662	827
White	11962	743	681	578	405	661	984	890	876	831	629	657	737	765	738	549	374	350	514
Black	21193	1745	1600	1522	1448	1729	1538	1450	1303	1269	1401	1441	1344	1048	766	565	428	297	299
<b>Sussex</b>	212919	12601	12579	11877	10621	11563	11656	10957	9443	10836	12436	15475	16432	15832	14567	11802	9100	7270	7872
Male	104412	6305	6308	6042	5451	5968	5887	5654	4822	5479	6118	7445	7961	7817	7146	5608	4182	3281	2938
White	85236	4972	4849	4095	3756	4197	4361	4109	3444	4136	4933	6295	7083	7154	6681	5295	3945	3132	2799
Black	12866	1141	1108	996	1067	1132	1120	984	723	692	807	860	696	520	358	250	178	120	114
Female	108507	6296	6271	5835	5170	5595	5769	5303	4621	5357	6318	8030	8471	8015	7421	6194	4918	3989	4934
White	89740	4962	4822	4021	3635	4053	4299	3929	3454	4283	5184	6841	7486	7207	6882	5741	4596	3723	4622
Black	13844	1143	1113	1000	982	1101	1122	1005	740	692	877	955	833	678	465	364	267	227	280

Sources:  
Delaware Health and Social Services, Division of Public Health, Delaware Health Statistics Center  
Delaware Population Consortium

POPSRA