

DELAWARE VITAL STATISTICS ANNUAL REPORT MARRIAGE AND DIVORCE, 2018



Suggested Citation:

Delaware Health Statistics Center. *Delaware Vital Statistics Annual Report, 2018*.
Delaware Department of Health and Social Services, Division of Public Health: 2020.

MARRIAGE AND DIVORCE

In 2018 there were 5,066 marriages and 2,709 divorces in Delaware. Over half of all divorces in 2018 were of marriages that lasted less than 10 years.

Marriage

Male

Youngest: 18
Oldest: 94

Female

Youngest: 17
Oldest: 88

Marriage with the greatest age difference between bride and groom: 59 years.

Most popular month to get married: September.

Divorce

Male

Youngest: 19
Oldest: 90

Female

Youngest: 19
Oldest: 85

Shortest duration of marriage: 33 days

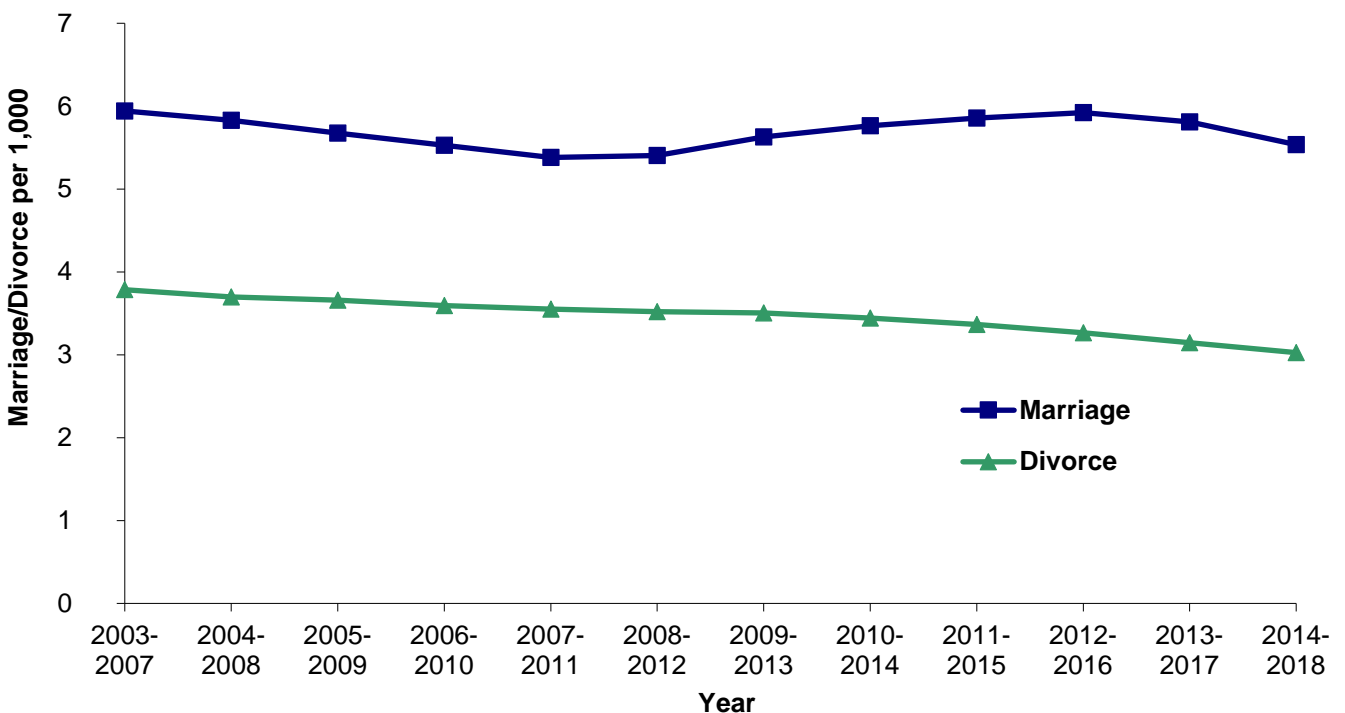
Longest duration of marriage: 57 years

Median duration of marriage: 10 years

Total children under 18 years of age: 1,614

Between 2003-2007 and 2014-2018, the five-year average marriage rate decreased from 5.9 to 5.5 marriages per 1,000 population. The five-year average divorce rate declined 21 percent from 3.8 in 2003-2007 to 3.0 divorces per 1,000 population in 2014-2018.

Figure 7. Five-year Average Marriage and Divorce Rates, per 1,000 Population, Delaware, 2003-2018



Source: Delaware Department of Health and Social Services, Division of Public Health, Delaware Health Statistics Center

TABLE B-1 NUMBER OF MARRIAGES BY PLACE OF CEREMONY U.S., DELAWARE AND COUNTIES, 2003-2018

Year	U.S.	Delaware	Kent	New Castle	Sussex
2003	2,245,000	4,923	923	2,784	1,216
2004	2,279,000	5,088	998	2,801	1,289
2005	2,249,000	5,018	973	2,726	1,319
2006	2,193,000	5,105	993	2,754	1,358
2007	2,197,000	4,970	944	2,670	1,356
2008	2,157,000	4,828	984	2,429	1,415
2009	2,080,000	4,772	930	2,491	1,351
2010	2,096,000	4,677	908	2,384	1,385
2011	2,118,000	4,727	927	2,421	1,379
2012	2,131,000	5,314	932	2,701	1,681
2013	2,081,301	6,086	972	3,007	2,107
2014	2,140,272	5,633	946	2,759	1,928
2015	2,221,579	5,404	887	2,688	1,829
2016	2,251,411	5,344	888	2,777	1,679
2017	2,236,496	5,071	911	2,559	1,601
2018	*	5,066	881	2,621	1,564

Note:

U.S. numbers are based on National Center for Health Statistics (NCHS) estimate.

* U.S. population numbers for 2018 were not available at the time of this posting.

Sources: National Center for Health Statistics

Delaware Department of Health and Social Services, Division of Public Health, Delaware Health Statistics Center

TABLE B-2. FIVE-YEAR AVERAGE MARRIAGE RATES PER 1,000 POPULATION BY PLACE OF CEREMONY BY COUNTY, U.S., DELAWARE, 2003-2018

Years	U.S.	Delaware	Kent	New Castle	Sussex
2003-2007	7.6	5.9	6.7	5.3	7.4
2004-2008	7.4	5.8	6.6	5.1	7.4
2005-2009	7.2	5.7	6.3	4.9	7.3
2006-2010	7.1	5.5	6.1	4.8	7.2
2007-2011	6.9	5.4	5.9	4.6	7.1
2008-2012	6.8	5.4	5.7	4.6	7.3
2009-2013	6.7	5.6	5.6	4.8	7.9
2010-2014	6.7	5.8	5.6	4.9	8.3
2011-2015	6.8	5.9	5.5	4.9	8.6
2012-2016	6.8	5.9	5.3	5.0	8.7
2013-2017	6.9	5.8	5.2	5.0	8.5
2014-2018	*	5.5	5.1	4.8	7.9

Note:

U.S. rates are based on NCHS estimate.

* U.S. population numbers for 2018 were not available at the time of this posting, therefore rates could not be calculated.

Sources: National Center for Health Statistics

Delaware Department of Health and Social Services, Division of Public Health, Delaware Health Statistics Center

TABLE B-3. NUMBER AND PERCENT OF MARRIAGES BY RACE OF GROOM AND BRIDE, DELAWARE, 2018

Race of Groom	Race of bride											
	Non-Hispanic White		Non-Hispanic Black		Non-Hispanic American Indian		Non-Hispanic Asian/Pacific Islander		Non-Hispanic Other		Hispanic	
	Number	Percent	Number	Percent	Number	Percent	Number	Percent	Number	Percent	Number	Percent
Non-Hispanic White	2,970	91.1	77	7.9	5	13.5	72	38.9	76	21.7	32	12.6
Non-Hispanic Black	139	4.3	873	89.1	0	0.0	11	5.9	30	8.6	25	9.8
Non-Hispanic American Indian	11	0.3	0	0.0	27	73.0	2	1.1	0	0.0	2	0.8
Non-Hispanic Asian/Pacific Islander	26	0.8	2	0.2	1	2.7	93	50.3	4	1.1	3	1.2
Non-Hispanic Other	62	1.9	15	1.5	1	2.7	3	1.6	230	65.7	12	4.7
Hispanic	52	1.6	13	1.3	3	8.1	4	2.2	10	2.9	180	70.9

Notes:

1. Percentages may not add to 100% due to rounding.
2. Percentages are calculated based upon the total number of marriages in each race of bride.

Source: Delaware Department of Health and Social Services, Division of Public Health, Delaware Health Statistics Center

TABLE B-4. NUMBER AND PERCENT OF MARRIAGES BY PREVIOUS MARITAL STATUS AND RACE OF BRIDE AND GROOM, DELAWARE, 2018

Previous Marital Status	Race					
	All Races		White NonHispanic		Black NonHispanic	
	Number	Percent	Number	Percent	Number	Percent
Groom						
Single	3,423	67.6	2,149	66.5	680	63.1
Widowed	79	1.6	48	1.5	24	2.2
Divorced	1,563	30.9	1,035	32.0	374	34.7
Bride						
Single	3,554	70.2	2,240	68.7	675	68.9
Widowed	76	1.5	48	1.5	25	2.6
Divorced	1,436	28.3	972	29.8	280	28.6

Notes:

1. Percentages may not add to 100% due to rounding.
2. Percentages are calculated based upon the total number of marriages in each race.
3. "All Races" includes "Other" and "Unknown" race categories.

Source: Delaware Department of Health and Social Services, Division of Public Health, Delaware Health Statistics Center

TABLE B-5. NUMBER AND PERCENT OF MARRIAGES BY MARRIAGE ORDER, TYPE OF CEREMONY, AND RACE OF BRIDE AND GROOM, DELAWARE, 2018

Marriage Order	Type of Ceremony	Race					
		All Races		White NonHispanic		Black NonHispanic	
		Number	Percent	Number	Percent	Number	Percent
Groom							
First Marriage	Civil	2,447	71.5	1,736	80.8	387	56.9
	Religious	976	28.5	413	19.2	293	43.1
Remarriage	Civil	1,069	65.1	765	70.6	231	58.0
	Religious	574	34.9	318	29.4	167	42.0
Bride							
First Marriage	Civil	2,516	70.8	1,809	80.8	379	56.1
	Religious	1,038	29.2	431	19.2	296	43.9
Remarriage	Civil	1,000	66.1	730	71.6	181	59.3
	Religious	512	33.9	290	28.4	124	40.7

Notes:

1. Percentages may not add to 100% due to rounding.
2. Percentages are calculated based upon the total number of marriages in each marriage order category and race.
3. "All Races" includes "Other" and "Unknown" race categories.

Source: Delaware Department of Health and Social Services, Division of Public Health, Delaware Health Statistics Center

TABLE B-6. MEDIAN AND MEAN AGE OF BRIDE AND GROOM BY MARRIAGE ORDER AND RACE, DELAWARE, 2018

Marriage Order	Race					
	All Races		White NonHispanic		Black NonHispanic	
	Median	Mean	Median	Mean	Median	Mean
Groom						
First Marriage	30	31	29	31	32	34
Remarriage	48	49	49	50	47	48
Bride						
First Marriage	28	30	28	30	31	32
Remarriage	45	46	47	47	45	45

Note:

"All Races" includes "Other" and "Unknown" race categories.

Source: Department of Delaware Health and Social Services, Division of Public Health, Delaware Health Statistics Center

TABLE B-7. NUMBER AND PERCENT OF MARRIAGES BY MARRIAGE ORDER, AGE, AND RACE OF BRIDE AND GROOM, DELAWARE, 2018

Marriage Order	Age	Race						
		All Races		Non-Hispanic White		Non-Hispanic Black		
		Number	Percent	Number	Percent	Number	Percent	
Groom								
All Marriages	<20	34	0.7	21	0.6	8	0.7	
	20-29	1,710	33.8	1,124	34.8	284	26.3	
	30-39	1,647	32.5	1,019	31.5	340	31.5	
	40-49	787	15.5	460	14.2	224	20.8	
	50-64	686	13.5	443	13.7	189	17.5	
	65+	202	4.0	165	5.1	33	3.1	
	Unk	0	0.0	0	0.0	0	0.0	
	First Marriage	<20	34	1.0	21	1.0	8	1.2
		20-29	1,642	48.0	1,082	50.3	266	39.1
		30-39	1,299	37.9	808	37.6	258	37.9
		40-49	290	8.5	146	6.8	92	13.5
		50-64	136	4.0	72	3.4	54	7.9
		65+	22	0.6	20	0.9	2	0.3
Unk		0	0.0	0	0.0	0	0.0	
Remarriage	<20	0	0.0	0	0.0	0	0.0	
	20-29	68	4.1	42	3.9	18	4.5	
	30-39	348	21.2	211	19.5	82	20.6	
	40-49	497	30.2	314	29.0	132	33.2	
	50-64	550	33.5	371	34.3	135	33.9	
	65+	180	11.0	145	13.4	31	7.8	
	Unk	0	0.0	0	0.0	0	0.0	
Bride								
All Marriages	<20	90	1.8	50	1.5	16	1.6	
	20-29	2,066	40.8	1,390	42.6	307	31.3	
	30-39	1,507	29.7	910	27.9	331	33.8	
	40-49	690	13.6	401	12.3	174	17.8	
	50-64	601	11.9	415	12.7	136	13.9	
	65+	112	2.2	94	2.9	16	1.6	
	Unk	0	0.0	0	0.0	0	0.0	
	First Marriage	<20	90	2.5	50	2.2	16	2.4
		20-29	1,977	55.6	1,334	59.6	291	43.1
		30-39	1,113	31.3	662	29.6	253	37.5
		40-49	224	6.3	111	5.0	66	9.8
		50-64	138	3.9	74	3.3	47	7.0
		65+	12	0.3	9	0.4	2	0.3
Unk		0	0.0	0	0.0	0	0.0	
Remarriage	<20	0	0.0	0	0.0	0	0.0	
	20-29	89	5.9	56	5.5	16	5.2	
	30-39	394	26.1	248	24.3	78	25.6	
	40-49	466	30.8	290	28.4	108	35.4	
	50-64	463	30.6	341	33.4	89	29.2	
	65+	100	6.6	85	8.3	14	4.6	
	Unk	0	0.0	0	0.0	0	0.0	

Notes:

1. Percentages may not add to 100% due to rounding.
2. Percentages are calculated based upon the total number of marriages in each marriage order category and race.
3. "All Races" includes "Other" and "Unknown" race categories.
4. "All Marriages" includes unknown number of this marriage.

Source: Delaware Department of Health and Social Services, Division of Public Health, Delaware Health Statistics Center

TABLE B-8. NUMBER OF MARRIAGES BY MARRIAGE ORDER AND AGE OF BRIDE, BY MARRIAGE ORDER, AND BY AGE OF GROOM DELAWARE, 2018

Marriage Order of Groom	Age of Groom \ Age of Bride	Marriage Order of Bride													
		First Marriage							Remarriage						
		<20	20-29	30-39	40-49	50-64	65+	Unk	<20	20-29	30-39	40-49	50-64	65+	Unk
First Marriage	<20	20	13	0	0	0	0	0	0	0	0	0	1	0	0
	20-29	67	1,340	143	3	0	0	0	0	31	43	11	4	0	0
	30-39	2	433	625	36	1	0	0	0	17	133	49	3	0	0
	40-49	0	20	100	56	14	1	0	0	3	32	54	9	1	0
	50-64	0	5	9	18	31	2	0	0	0	1	19	48	3	0
	65+	0	0	2	1	8	3	0	0	0	0	0	2	6	0
	Unk	0	0	0	0	0	0	0	0	0	0	0	0	0	0
Remarriage	<20	0	0	0	0	0	0	0	0	0	0	0	0	0	0
	20-29	0	41	12	0	0	0	0	0	12	3	0	0	0	0
	30-39	1	85	119	15	1	0	0	0	19	80	23	5	0	0
	40-49	0	35	79	56	12	0	0	0	6	80	185	44	0	0
	50-64	0	3	22	36	52	2	0	0	1	22	122	276	14	0
	65+	0	2	2	3	19	4	0	0	0	0	3	71	76	0
	Unk	0	0	0	0	0	0	0	0	0	0	0	0	0	0

Source: Delaware Department of Health and Social Services, Division of Public Health, Delaware Health Statistics Center

TABLE B-9. NUMBER AND PERCENT OF MARRIAGES BY MONTH OF CEREMONY, DELAWARE, 2018

Month	Number	Percent
January	196	3.9
February	227	4.5
March	288	5.7
April	382	7.5
May	523	10.3
June	551	10.9
July	431	8.5
August	503	9.9
September	697	13.8
October	586	11.6
November	365	7.2
December	317	6.3
Total	5,066	100.0

Notes:

1. Percentages may not add to 100% due to rounding.
2. Percentages are calculated based upon the total number of marriages.

Source: Delaware Department of Health and Social Services, Division of Public Health, Delaware Health Statistics Center

TABLE B-10. NUMBER AND PERCENT OF MARRIAGES BY DAY OF WEEK CEREMONY PERFORMED, DELAWARE, 2018

Day	Number	Percent
Sunday	418	8.3
Monday	247	4.9
Tuesday	201	4.0
Wednesday	729	14.4
Thursday	305	6.0
Friday	847	16.7
Saturday	2,319	45.8
Total	5,066	100.0

Notes:

1. Percentages may not add to 100% due to rounding.
2. Percentages are calculated based upon the total number of marriages.

Source: Delaware Department of Health and Social Services, Division of Public Health, Delaware Health Statistics Center

TABLE B-11. NUMBER OF DIVORCES/ANNULMENTS* BY PLACE OF DECREE, DELAWARE AND COUNTIES, 2003-2018

Year	Delaware	Kent	New Castle	Sussex
2003	3,178	673	1,834	671
2004	3,108	701	1,744	663
2005	3,250	708	1,753	789
2006	3,239	673	1,836	730
2007	3,215	721	1,771	723
2008	3,057	704	1,753	600
2009	3,169	694	1,795	680
2010	3,152	690	1,771	691
2011	3,230	706	1,766	758
2012	3,239	742	1,843	654
2013	3,133	729	1,607	797
2014	3,047	659	1,717	671
2015	2,954	632	1,590	732
2016	2,932	676	1,637	619
2017	2,851	611	1,557	683
2018	2,709	570	1,536	603

Note:

*Annulments represent less than 0.3% of the totals.

Source: Delaware Department of Health and Social Services, Division of Public Health, Delaware Health Statistics Center

TABLE B-12. FIVE-YEAR AVERAGE DIVORCE/ANNULMENT* RATES PER 1,000 POPULATION BY PLACE OF DECREE BY COUNTY, DELAWARE, 2003-2018

Years	Delaware	Kent	New Castle	Sussex
2003-2007	3.8	4.8	3.4	4.0
2004-2008	3.7	4.7	3.4	3.8
2005-2009	3.7	4.6	3.4	3.8
2006-2010	3.6	4.4	3.3	3.6
2007-2011	3.6	4.4	3.3	3.5
2008-2012	3.5	4.3	3.3	3.4
2009-2013	3.5	4.3	3.2	3.6
2010-2014	3.4	4.2	3.2	3.5
2011-2015	3.4	4.1	3.1	3.5
2012-2016	3.3	4.0	3.0	3.3
2013-2017	3.1	3.8	2.9	3.3
2014-2018	3.0	3.5	2.9	3.0

Note:

*Annulments represent less than 0.3% of the totals.

Source: Delaware Department of Health and Social Services, Division of Public Health Delaware Health Statistics Center

TABLE B-13. NUMBER OF DIVORCES/ANNULMENTS* BY RACE OF WIFE AND RACE OF HUSBAND, DELAWARE, 2018

Race of Husband	Race of Wife								
	White	Black	American Indian	Chinese	Hawaiian	Filipino	Other Asian	Other Race	Not Classifiable
White	1,529	33	4	10	0	6	14	23	27
Black	71	614	11	1	2	0	1	32	16
American Indian	3	3	0	0	0	0	0	0	0
Chinese	2	0	0	6	0	0	1	0	0
Hawaiian	0	0	0	0	0	0	0	0	0
Filipino	0	0	1	0	0	5	0	2	1
Other Asian	9	1	1	0	0	0	40	0	1
Other Race	46	23	3	0	0	0	0	85	5
Not Classifiable	16	6	0	0	0	1	0	3	51

Notes:

*Annulments represent less than 0.3% of the totals.

Source: Delaware Department of Health and Social Services, Division of Public Health, Delaware Health Statistics Center

TABLE B 14. MEAN AND MEDIAN AGE OF HUSBAND AND WIFE AT TIME OF DIVORCE DECREE BY NUMBER OF THIS MARRIAGE AND RACE OF HUSBAND AND WIFE, DELAWARE, 2018

Number of Marriage	All Races		Non-Hispanic White		Non-Hispanic Black	
	Median	Mean	Median	Mean	Median	Mean
Husband						
All Marriages	43	44	42	43	42	43
First Marriage	40	41	38	40	40	40
Second Marriage	50	50	50	50	47	48
Third Marriage+	55	55	55	56	54	53
Not Stated	46	46	52	49	47	47
Wife						
All Marriages	41	42	40	41	41	41
First Marriage	37	39	36	38	39	40
Second Marriage	48	48	47	47	47	47
Third Marriage+	51	51	50	51	46	45
Not Stated	42	42	48	44	45	44

Notes:

1. See Definitions Section for explanation of the mean and median.
2. "All Races" includes "Other" and "Unknown" race categories.
3. "All Marriages" includes unknown number of this marriage.

Source: Delaware Department of Health and Social Services, Division of Public Health,

TABLE B-15. NUMBER AND PERCENT OF DIVORCES/ANNULMENTS* BY MARRIAGE ORDER, AGE OF HUSBAND AND WIFE AT TIME OF DIVORCE DECREE AND RACE OF HUSBAND AND WIFE, DELAWARE, 2018

Marriage Order	Age	Husband's Race						Wife's Race					
		All Races		Non-Hispanic White		Non-Hispanic Black		All Races		Non-Hispanic White		Non-Hispanic Black	
		Number	Percent	Number	Percent	Number	Percent	Number	Percent	Number	Percent	Number	Percent
All Marriages	<20	1	0.0	0	0.0	0	0.0	4	0.1	2	0.2	0	0.0
	20-29	271	10.0	129	12.9	37	9.7	375	13.8	162	16.1	45	13.3
	30-39	762	28.1	282	28.3	109	28.5	836	30.9	327	32.4	103	30.4
	40-49	753	27.8	266	26.7	127	33.2	728	26.9	283	28.1	106	31.3
	50-64	728	26.9	261	26.2	89	23.3	598	22.1	193	19.1	67	19.8
	65+	136	5.0	49	4.9	13	3.4	89	3.3	32	3.2	7	2.1
	Unk	58	2.1	10	1.0	7	1.8	79	2.9	9	0.9	11	3.2
First Marriage	<20	1	0.1	0	0.0	0	0.0	4	0.2	2	0.3	0	0.0
	20-29	245	13.6	120	17.4	33	12.5	328	18.3	150	21.2	39	15.7
	30-39	632	35.0	244	35.3	95	35.8	664	37.1	269	38.0	87	35.1
	40-49	514	28.4	182	26.3	85	32.1	444	24.8	176	24.9	73	29.4
	50-64	343	19.0	124	17.9	43	16.2	278	15.5	92	13.0	35	14.1
	65+	41	2.3	12	1.7	4	1.5	34	1.9	13	1.8	5	2.0
	Unk	31	1.7	9	1.3	5	1.9	36	2.0	5	0.7	9	3.6
Second Marriage	<20	0	0.0	0	0.0	0	0.0	0	0.0	0	0.0	0	0.0
	20-29	14	2.3	8	3.4	2	2.5	16	2.9	7	3.4	3	4.5
	30-39	94	15.7	35	14.8	13	16.0	108	19.7	44	21.5	13	19.7
	40-49	179	29.9	70	29.5	30	37.0	183	33.4	76	37.1	23	34.8
	50-64	237	39.6	95	40.1	31	38.3	195	35.6	64	31.2	25	37.9
	65+	68	11.4	29	12.2	4	4.9	31	5.7	12	5.9	1	1.5
	Unk	7	1.2	0	0.0	1	1.2	15	2.7	2	1.0	1	1.5
Third Marriage and more	<20	0	0.0	0	0.0	0	0.0	0	0.0	0	0.0	0	0.0
	20-29	2	1.1	0	0.0	1	3.6	1	0.6	1	1.4	0	0.0
	30-39	4	2.3	1	1.7	1	3.6	16	9.2	8	11.6	1	9.1
	40-49	37	21.1	12	20.7	9	32.1	57	32.8	24	34.8	7	63.6
	50-64	107	61.1	37	63.8	12	42.9	75	43.1	27	39.1	3	27.3
	65+	23	13.1	7	12.1	5	17.9	19	10.9	7	10.1	0	0.0
	Unk	2	1.1	1	1.7	0	0.0	6	3.4	2	2.9	0	0.0
Not Stated	<20	0	0.0	0	0.0	0	0.0	0	0.0	0	0.0	0	0.0
	20-29	10	7.8	1	9.1	1	12.5	30	15.1	4	14.8	3	21.4
	30-39	32	25.0	2	18.2	0	0.0	48	24.1	6	22.2	2	14.3
	40-49	23	18.0	2	18.2	3	37.5	44	22.1	7	25.9	3	21.4
	50-64	41	32.0	5	45.5	3	37.5	50	25.1	10	37.0	4	28.6
	65+	4	3.1	1	9.1	0	0.0	5	2.5	0	0.0	1	7.1
	Unk	18	14.1	0	0.0	1	12.5	22	11.1	0	0.0	1	7.1

Notes:

1. Percentages may not add to 100% due to rounding.
2. Percentages are calculated based upon the total number of divorces in each marriage order category and race.
3. "All Races" includes "Other" and "Unknown" race categories.
4. "All Marriages" includes unknown number of this marriage.

Source: Delaware Department of Health and Social Services, Division of Public Health, Delaware Health Statistics Center

TABLE B-16. MEDIAN AND MEAN DURATION OF MARRIAGE IN YEARS AT TIME OF DIVORCE DECREE BY NUMBER OF THIS MARRIAGE AND RACE OF HUSBAND AND WIFE, DELAWARE, 2018

Number of Marriage	All Races		Non-Hispanic White		Non-Hispanic Black	
	Median	Mean	Median	Mean	Median	Mean
Husband						
All Marriages	9.1	11.8	9.1	12.1	7.5	9.7
First Marriage	9.7	12.4	9.1	12.3	8.1	10.4
Second Marriage	8.3	11.1	9.6	11.8	6.2	8.2
Third Marriage+	6.8	8.7	6.9	9.5	7.0	7.9
Not Stated	8.3	11.2	12.6	14.5	7.9	7.1
Wife						
All Marriages	9.1	11.8	9.1	11.9	7.1	9.8
First Marriage	9.6	12.6	9.3	12.5	8.0	10.6
Second Marriage	8.6	10.6	8.8	10.6	5.8	8.0
Third Marriage+	6.8	8.8	7.9	9.8	3.1	3.1
Not Stated	8.2	10.9	9.0	11.4	8.2	9.1

Notes:

1. See Definitions Section for explanation of the mean and median.
2. "All Races" includes "Other" and "Unknown" race categories.
3. "All Marriages" includes unknown number of this marriage.

Source: Delaware Department of Health and Social Services, Division of Public Health, Delaware Health Statistics Center

TABLE B-17. NUMBER AND PERCENT OF DIVORCES/ANNULMENTS* BY MARRIAGE ORDER, DURATION OF THIS MARRIAGE, AND RACE OF HUSBAND AND WIFE, DELAWARE, 2018

Marriage Order	Duration of this Marriage	Husband's Race						Wife's Race					
		All Races		Non-Hispanic White		Non-Hispanic Black		All Races		Non-Hispanic White		Non-Hispanic Black	
		Number	Percent	Number	Percent	Number	Percent	Number	Percent	Number	Percent	Number	Percent
All Marriages	<1	55	2.0	18	1.8	10	2.6	55	2.0	16	1.6	11	3.2
	1-4	681	25.1	257	25.8	111	29.1	681	25.1	256	25.4	98	28.9
	5-9	686	25.3	251	25.2	117	30.6	686	25.3	260	25.8	102	30.1
	10-14	464	17.1	164	16.4	66	17.3	464	17.1	165	16.4	60	17.7
	15-19	273	10.1	98	9.8	34	8.9	273	10.1	105	10.4	26	7.7
	20-24	212	7.8	88	8.8	21	5.5	212	7.8	91	9.0	17	5.0
	25-29	142	5.2	56	5.6	12	3.1	142	5.2	55	5.5	15	4.4
	30+	144	5.3	57	5.7	7	1.8	144	5.3	50	5.0	7	2.1
	Not Stated	52	1.9	8	0.8	4	1.0	52	1.9	10	1.0	3	0.9
First Marriage	<1	28	1.5	11	1.6	5	1.9	28	1.6	11	1.6	5	2.0
	1-4	428	23.7	169	24.5	72	27.2	415	23.2	176	24.9	62	25.0
	5-9	451	25.0	184	26.6	81	30.6	461	25.8	177	25.0	80	32.3
	10-14	314	17.4	108	15.6	46	17.4	294	16.4	111	15.7	46	18.5
	15-19	196	10.8	66	9.6	27	10.2	187	10.5	69	9.8	20	8.1
	20-24	153	8.5	63	9.1	16	6.0	159	8.9	70	9.9	14	5.6
	25-29	107	5.9	44	6.4	11	4.2	105	5.9	46	6.5	13	5.2
	30+	105	5.8	41	5.9	6	2.3	117	6.5	43	6.1	7	2.8
	Not Stated	25	1.4	5	0.7	1	0.4	22	1.2	4	0.6	1	0.4
Second Marriage	<1	14	2.3	5	2.1	2	2.5	13	2.4	4	2.0	4	6.1
	1-4	166	27.7	64	27.0	30	37.0	153	27.9	56	27.3	25	37.9
	5-9	155	25.9	50	21.1	24	29.6	131	23.9	50	24.4	16	24.2
	10-14	94	15.7	45	19.0	11	13.6	101	18.4	36	17.6	9	13.6
	15-19	61	10.2	29	12.2	5	6.2	65	11.9	30	14.6	6	9.1
	20-24	40	6.7	20	8.4	5	6.2	34	6.2	15	7.3	2	3.0
	25-29	25	4.2	7	3.0	1	1.2	26	4.7	6	2.9	2	3.0
	30+	31	5.2	14	5.9	1	1.2	11	2.0	4	2.0	0	0.0
	Not Stated	13	2.2	3	1.3	2	2.5	14	2.6	4	2.0	2	3.0
Third Marriage and more	<1	6	3.4	2	3.4	2	7.1	7	4.0	1	1.4	1	9.1
	1-4	58	33.1	20	34.5	8	28.6	58	33.3	17	24.6	8	72.7
	5-9	48	27.4	16	27.6	7	25.0	48	27.6	25	36.2	2	18.2
	10-14	34	19.4	10	17.2	8	28.6	35	20.1	16	23.2	0	0.0
	15-19	8	4.6	2	3.4	2	7.1	8	4.6	4	5.8	0	0.0
	20-24	11	6.3	4	6.9	0	0.0	7	4.0	2	2.9	0	0.0
	25-29	4	2.3	3	5.2	0	0.0	4	2.3	1	1.4	0	0.0
	30+	1	0.6	1	1.7	0	0.0	5	2.9	3	4.3	0	0.0
	Not Stated	5	2.9	0	0.0	1	3.6	2	1.1	0	0.0	0	0.0
Not Stated	<1	7	5.5	0	0.0	1	12.5	7	4.0	0	0.0	1	7.1
	1-4	29	22.7	4	36.4	1	12.5	55	31.6	7	25.9	3	21.4
	5-9	32	25.0	1	9.1	5	62.5	46	26.4	8	29.6	4	28.6
	10-14	22	17.2	1	9.1	1	12.5	34	19.5	2	7.4	5	35.7
	15-19	8	6.3	1	9.1	0	0.0	13	7.5	2	7.4	0	0.0
	20-24	8	6.3	1	9.1	0	0.0	12	6.9	4	14.8	1	7.1
	25-29	6	4.7	2	18.2	0	0.0	7	4.0	2	7.4	0	0.0
	30+	7	5.5	1	9.1	0	0.0	11	6.3	0	0.0	0	0.0
	Not Stated	9	7.0	0	0.0	0	0.0	14	8.0	2	7.4	0	0.0

Notes:

1. Percentages may not add to 100% due to rounding.
2. Percentages are calculated based upon the total number of divorces in each marriage order category and race.
3. "All Races" includes "Other" and "Unknown" race categories.
4. "All Marriages" includes unknown number of this marriage.

Source: Delaware Department of Health and Social Services, Division of Public Health, Delaware Health Statistics Center

TABLE B-18. NUMBER AND PERCENT OF DIVORCES BY RACE OF HUSBAND AND WIFE AND NUMBER OF CHILDREN UNDER 18, DELAWARE, 2018

Number of Children Under 18	Race									
	All Races		Non-Hispanic White		Non-Hispanic Black		Non-Hispanic Other		HISPANIC	
	Number	Percent	Number	Percent	Number	Percent	Number	Percent	Number	Percent
Husband	2,709	100.0	1,011	100.0	366	100.0	90	100.0	1,242	100.0
None	1,249	46.1	451	44.6	174	47.5	41	45.6	583	46.9
1	386	14.2	151	14.9	52	14.2	18	20.0	165	13.3
2	338	12.5	161	15.9	44	12.0	15	16.7	118	9.5
3	127	4.7	58	5.7	17	4.6	3	3.3	49	3.9
4	29	1.1	9	0.9	8	2.2	0	0.0	12	1.0
5+	10	0.4	2	0.2	1	0.3	1	1.1	6	0.5
Unknown	570	21.0	179	17.7	70	19.1	12	13.3	309	24.9
Wife	2,709	100.0	994	100.0	355	100.0	90	100.0	1,270	100.0
None	1,249	46.1	435	43.8	162	45.6	47	52.2	605	47.6
1	386	14.2	150	15.1	52	14.6	14	15.6	170	13.4
2	338	12.5	167	16.8	36	10.1	9	10.0	126	9.9
3	127	4.7	64	6.4	12	3.4	2	2.2	49	3.9
4	29	1.1	10	1.0	6	1.7	1	1.1	12	0.9
5+	10	0.4	3	0.3	1	0.3	1	1.1	5	0.4
Unknown	570	21.0	165	16.6	86	24.2	16	17.8	303	23.9

Notes:

1. Percentages may not add to 100% due to rounding.
2. Percentages are calculated based upon the total number of divorces in each race category.
3. "All Races" includes "Other" and "Unknown" race categories.

Source: Delaware Department of Health and Social Services, Division of Public Health, Delaware Health Statistics Center